

COLUMBINE LOGGING

Scale: 5" / 100'
Measured Depth Log

Well Name RICO LC29-74-1HNA

Location SWSE SEC 29 T9N R59W

State COLORADO

County WELD

Country UNITED STATES

Rig Number H&P 273

API Number 05-123-38777

Region DJ BASIN

Field WILDCAT

Spud Date 5/7/2014

Drilling Completed 5/9/2014

Surface Coordinates 340' FSL; 2092' FEL

Ground Elevation 4871'

K.B. Elevation 4896'

Logged Interval 640' **To** 5366'

Total Depth 5366'

Formation NIOBRARA

Type of Drilling Fl... LSND

Operator

Company NOBLE ENERGY INC.

Address 1625 Broadway Suite 2200
Denver, CO 80202

Geologist

Name SARAH COMPTON

Company NOBLE ENERGY INC.

Address 1625 Broadway Suite 2200
Denver, CO 80202

Other

Wellsite Geologist #1: LAURA KELLOGG

Wellsite Geologist #2: TIM BRIGHT

Rock Types

UNKNOWN	CEMENT	IGNEOUS	SHALE GRAY
CHALK	CHERT	LIMESTONE	SHALY SILTSTONE
MARLSTONE	CLAY CHOKE SAND	SIDERITE or LIMONITE	SILTSTONE
SANDSTONE	CLAYSTONE	METAMORPHIC	TILL
SHALY SANDSTONE	COAL	NO SAMPLE	TUFF
SILTY SHALE	CONGLOMERATE	SALT	WELDED TUFF
ANHYDRITE	DOLOMITE	SALT- PEPPER SAND	
BENTONITE	GRANITE	SHALE	
BRECCIA	GYPSUM	SHALE COLORED	

Accessories

Fossils

ALGAE
AMPHIPORA
BELEMNITE
BIOCLASTIC
BRACHIOPOD
BRYOZOA
CEPHALOPOD
CORAL
CRINOID
ECHINOID
FISH
FORAMINIFERA

Fossil

GASTROPOD
INOCERAMUS
OOLITE
OSTRACOD
PELECYPOD
PELLET
PISOLITE
PLANT REMAINS
PLANT SPORES
SCAPHOPOD
STROMATOPOROID

Minerals

ANHYDRITIC

ARGILLACEOUS
ARGILLITE GRAIN
BENTONITE
BITUMENOUS SUBSTANCE
BRECCIA FRAGMENTS
CALCAREOUS
CARBONACEOUS FLAKES
CHTDK
CHTLT
COAL - THIN BEDS
DOLOMITIC
FELDSPAR
FERRUGINOUS PELLET

FERRUGINOUS

GLAUCONITE
GYPSIFEROUS
HEAVY MINERAL
KAOLIN
MARLSTONE
MINERAL CRYSTALS
NODULES
PHOSPHATE PELLETS
PYRITE
SALT CAST
SANDY
SILICEOUS
SILTY

TUFFACEOUS

Stringer

ANHYDRITE STRINGER
BENTONITE STRINGER
COAL STRINGER
DOLOMITE STRINGER
GYPSUM STRINGER
LIMESTONE STRINGER
MARLSTONE (CALC) STRG
MARLSTONE (DOL) STRG
SANDSTONE STRINGER
SHALE STRINGER
SILTSTONE STRINGER

Other Symbols

Oil Show

DEAD
EVEN
QUESTIONABLE
SPOTTED STAINING

Porosity

E EARTHY
F FENESTRAL
F FRACTURE
X INTERCRYSTALLINE
Q INTEROOLITIC

MOLDIC

ORGANIC
P PINPOINT
V VUGGY

Engineering

BIT
CONNECTION (LEFT)
CONNECTION (RIGHT)
CONNECTION GAS
CORE - LOST
CORE - RECOVERED
DST INTERVAL

FAULT

FORMATION TOP
GAS SHOW
MN DEPTH MN DEPTH
NORMAL FAULT
OIL SHOW
OVERTURNED STRATA
REVERSE FAULT
SIDEWALL CORE (LEFT)
SIDEWALL CORE (RIGHT)
SLIDE
SURVEY
TRIP GAS

WIRELINE TESTED - LEFT

WIRELINE TESTED - RT

Rounding

ANGULAR
ROUNDED
SUBANG
SUBRND

Textures

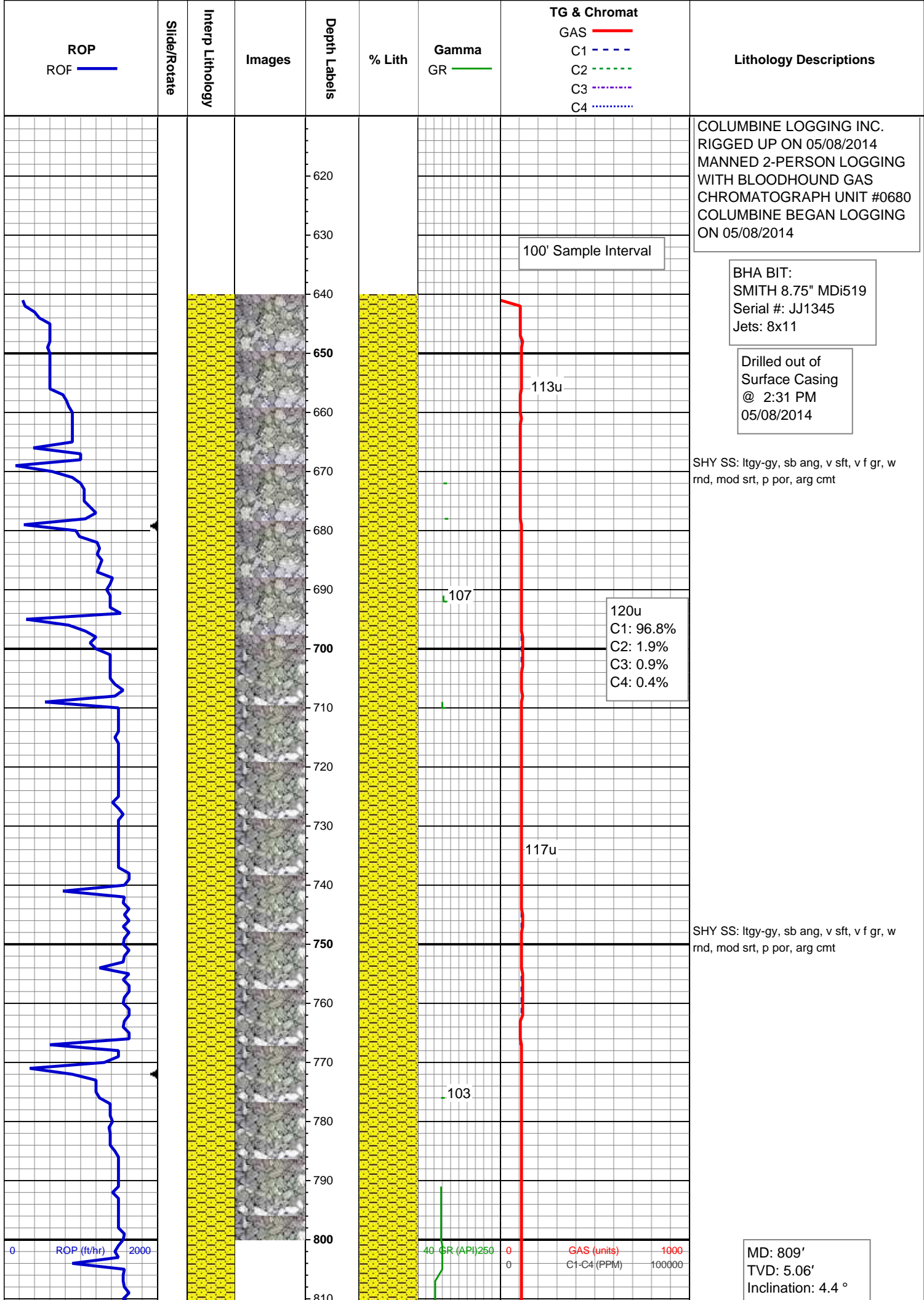
BOUNDSTONE
CHALKY
CRYPTOXLN

E EARTHY

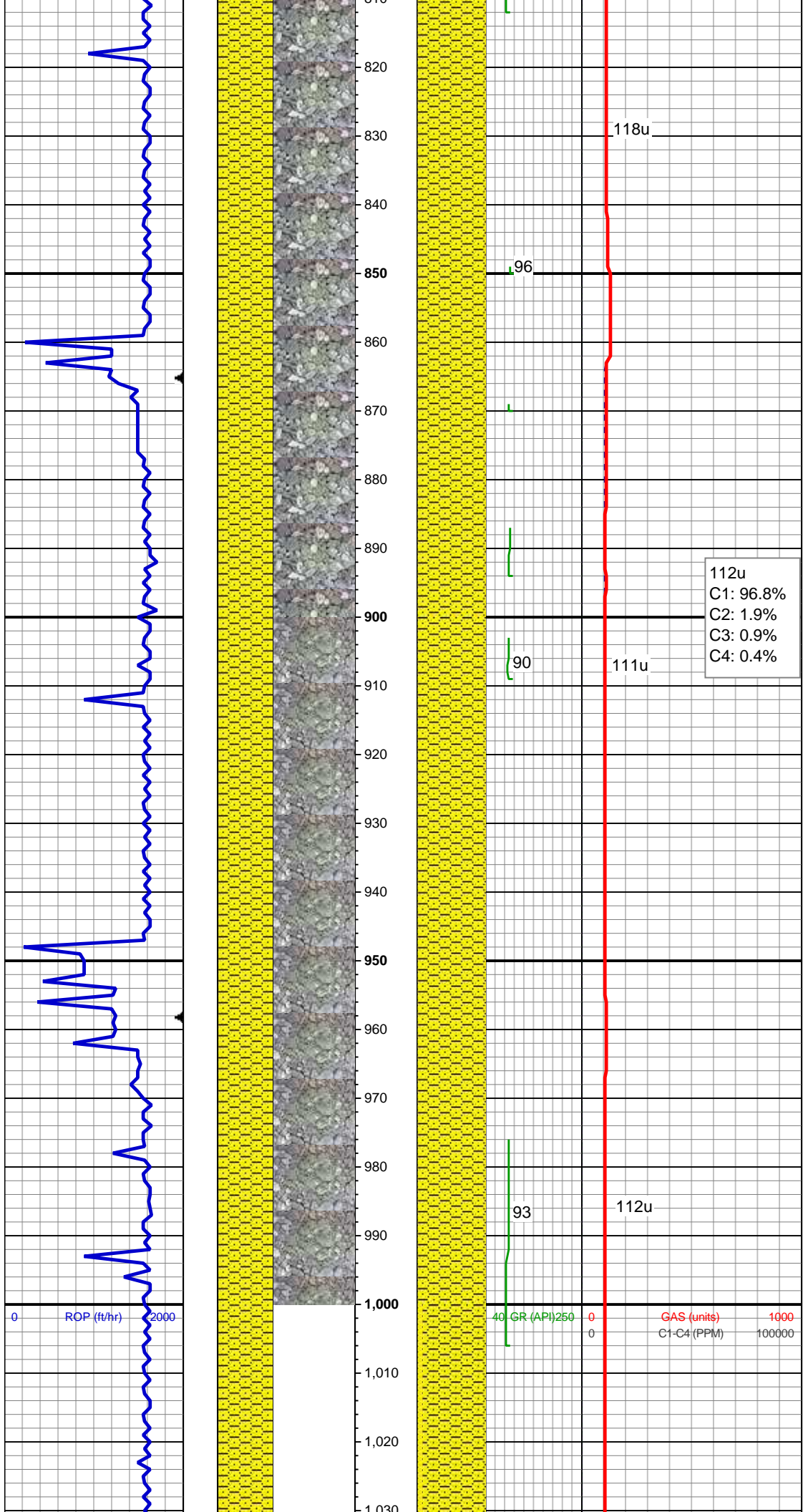
FINELYXLN
GRAINSTONE
L LITHOGRAPHIC
MX MICROXLN
MS MUDSTONE
PS PACKSTONE
WS WACKESTONE

Sorting

M MODERATE
P POOR
W WELL



Azimuth: 808.98 °
VS: 0.22'

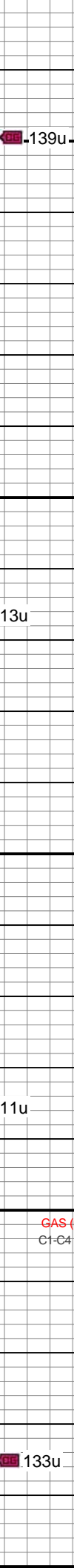
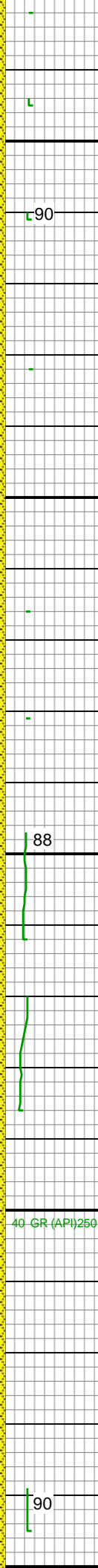
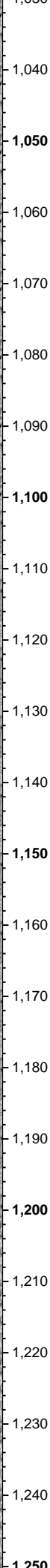
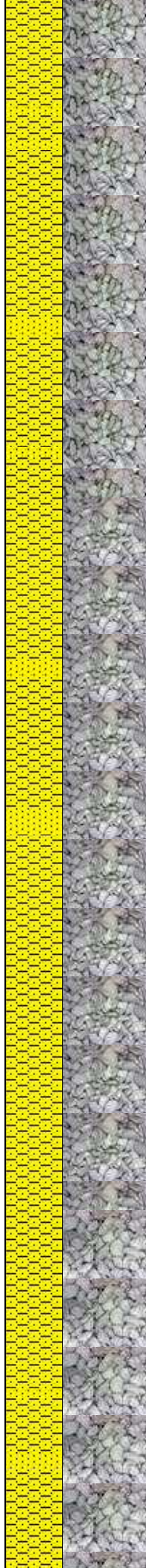
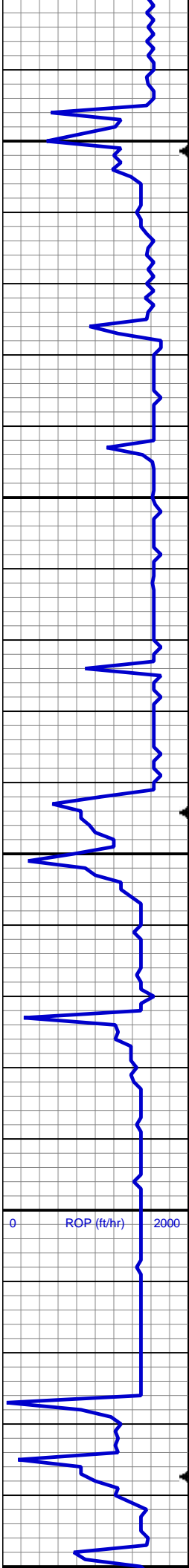


SHY SS: ltgy-gy, sb ang, v sft, v f gr, w
rnd, mod srt, p por, arg cmt

112u
C1: 96.8%
C2: 1.9%
C3: 0.9%
C4: 0.4%

SHY SS: ltgy-gy, sb ang, v sft, v f gr, w
rnd, mod srt, p por, arg cmt

MD: 994'
TVD: 6.33'
Inclination: 4.2 °
Azimuth: 993.97 °
VS: 0.08'

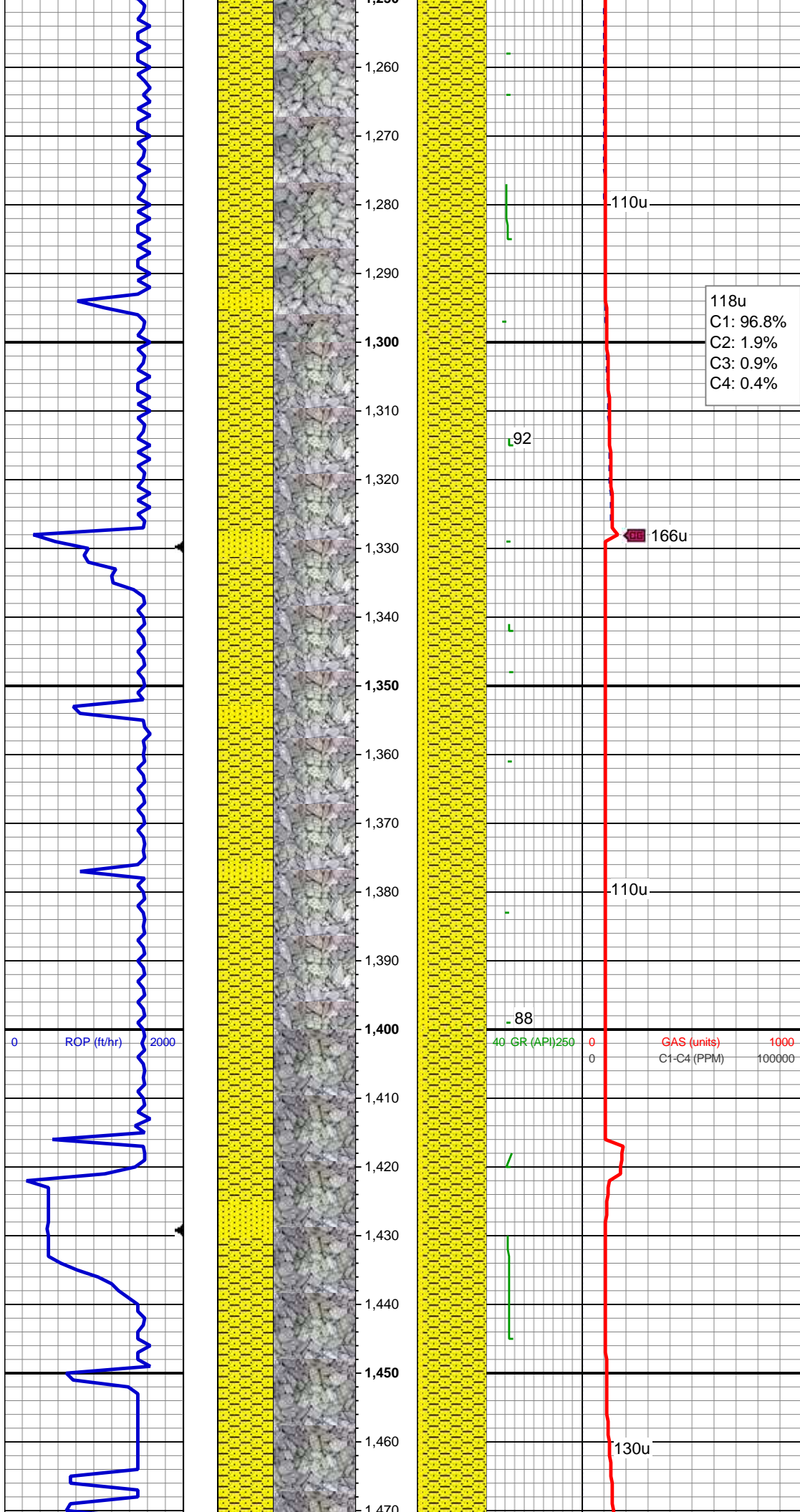


109u
C1: 96.8%
C2: 1.9%
C3: 0.9%
C4: 0.4%

SHY SS: ltgy-gy, sb ang, v sft, v f gr, w
rnd, mod srt, p por, arg cmt
SS: ltgy-wh-op, sb ang, v fri, f gr - v f gr,
mod rnd, p srt, p por, arg cmt, occ glau,
tr lith frag

SHY SS: ltgy-gy, sb ang, v sft, v f gr, w
rnd, mod srt, p por, arg cmt
SS: ltgy-wh-op, sb ang, v fri, f gr - v f gr,
mod rnd, p srt, p por, arg cmt, occ glau,
tr lith frag

SHY SS: ltgy-gy, sb ang, v sft, v f gr, w
rnd, mod srt, p por, arg cmt
SS: ltgy-wh-op, sb ang, v fri, f gr - v f gr,



SS: ltgy-wh-op, sb ang, v fri, f gr - v f gr,
mod rnd, p srt, p por, arg cmt, occ glau,
tr lith frag

MD: 1,273'
TVD: 7.28'
Inclination: 155.14 °
Azimuth: 1,272.97 °
VS: 0.2'

118u
C1: 96.8%
C2: 1.9%
C3: 0.9%
C4: 0.4%

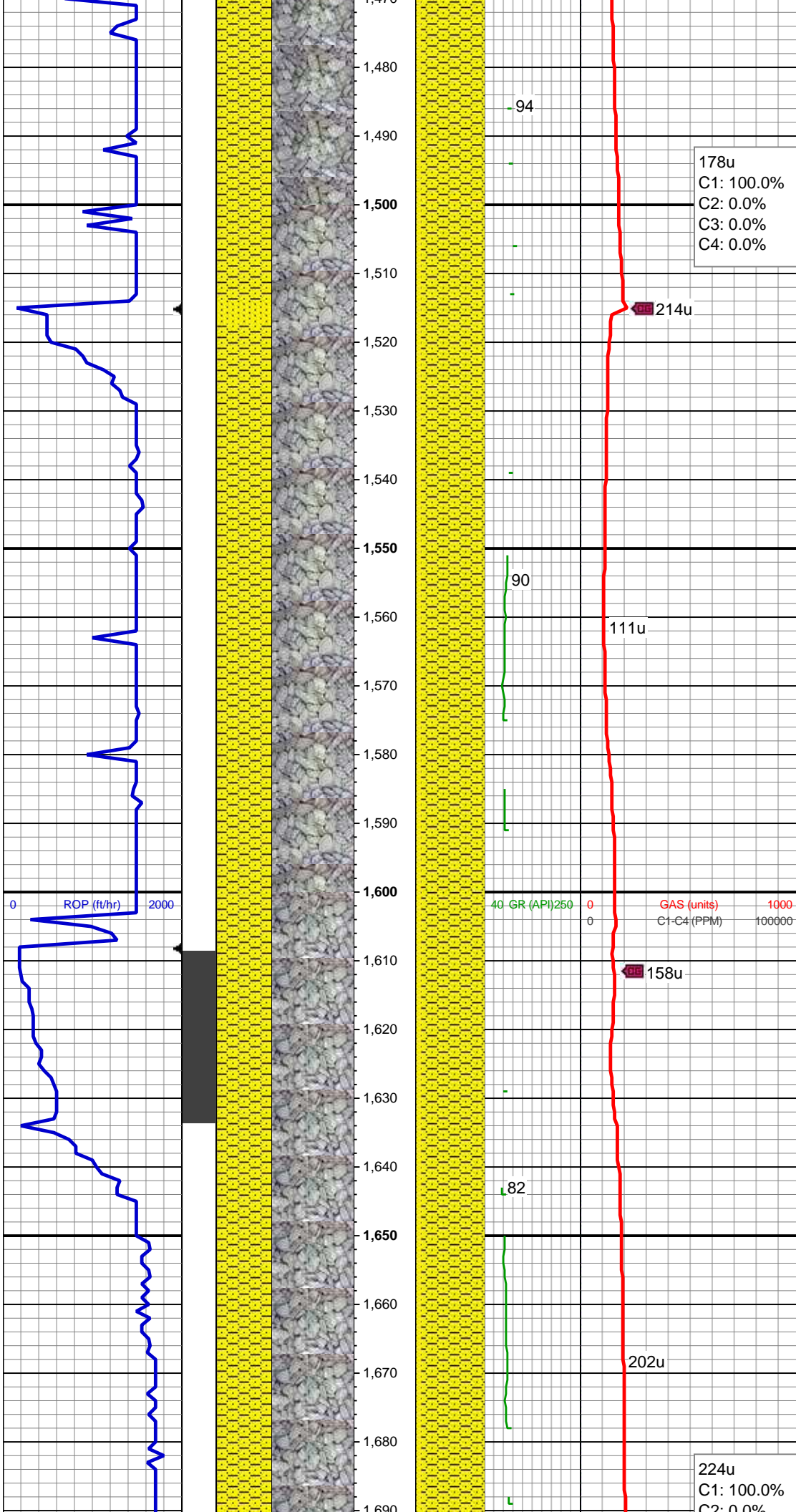
SHY SS: ltgy-gy, sb ang, v sft, v f gr, w
rnd, mod srt, p por, arg cmt
SS: ltgy-wh-op, sb ang, v fri, f gr - v f gr,
mod rnd, p srt, p por, arg cmt, occ glau,
tr lith frag

MD: 1,366'
TVD: 7.21'
Inclination: 119.56 °
Azimuth: 1,365.97 °
VS: 0.1'

SHY SS: ltgy-gy, sb ang, v sft, v f gr, w
rnd, mod srt, p por, arg cmt
SS: ltgy-wh-op, sb ang, v fri, f gr - v f gr,
mod rnd, p srt, p por, arg cmt, occ glau,
tr lith frag

MD: 1,459'
TVD: 7.31'
Inclination: 22.97 °
Azimuth: 1,458.27 °

Azimuth: 1,458.97°
VS: 0.15'



178u
C1: 100.0%
C2: 0.0%
C3: 0.0%
C4: 0.0%

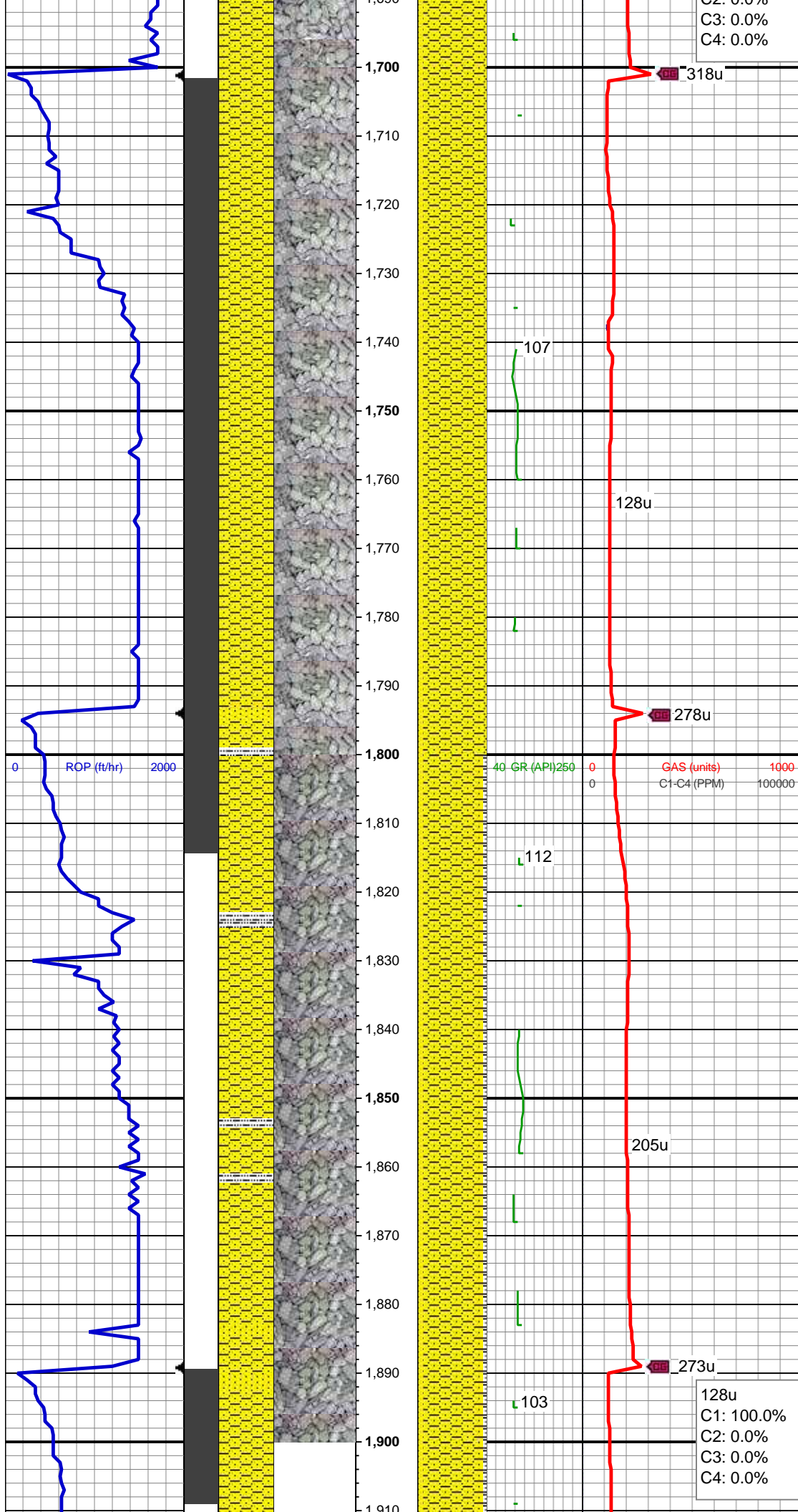
SHY SS: ltgy-gy, sb ang, v sft, v f gr, w
rnd, mod srt, p por, arg cmt
SS: ltgy-wh-op, sb ang, v fri, f gr - v f gr,
mod rnd, p srt, p por, arg cmt, occ glau,
tr lith frag

MD: 1,554'
TVD: 7.49'
Inclination: 62.32 °
Azimuth: 1,553.97 °
VS: 0.11'

MD: 1,645'
TVD: 6.65'
Inclination: 111.06 °
Azimuth: 1,644.92 °
VS: 3.35'

SHY SS: ltgy-gy, sb ang, v sft, v f gr, w
rnd, mod srt, p por, arg cmt
SS: ltgy-wh-op, sb ang, v fri, f gr - v f gr,
mod rnd, p srt, p por, arg cmt, occ glau,
tr lith frag

224u
C1: 100.0%
C2: 0.0%



C2: 0.0%
C3: 0.0%
C4: 0.0%

MD: 1,738'
TVD: 4.26'
Inclination: 108.57 °
Azimuth: 1,737.64 °
VS: 2.73'

SHY SS: ltgy-gy, sb ang, v sft, v f gr, w
rnd, mod srt, p por, arg cmt
SS: ltgy-wh-op, sb ang, v fri, f gr - v f gr,
mod rnd, p srt, p por, arg cmt, occ glau,
tr lith frag

ROP (ft/hr)

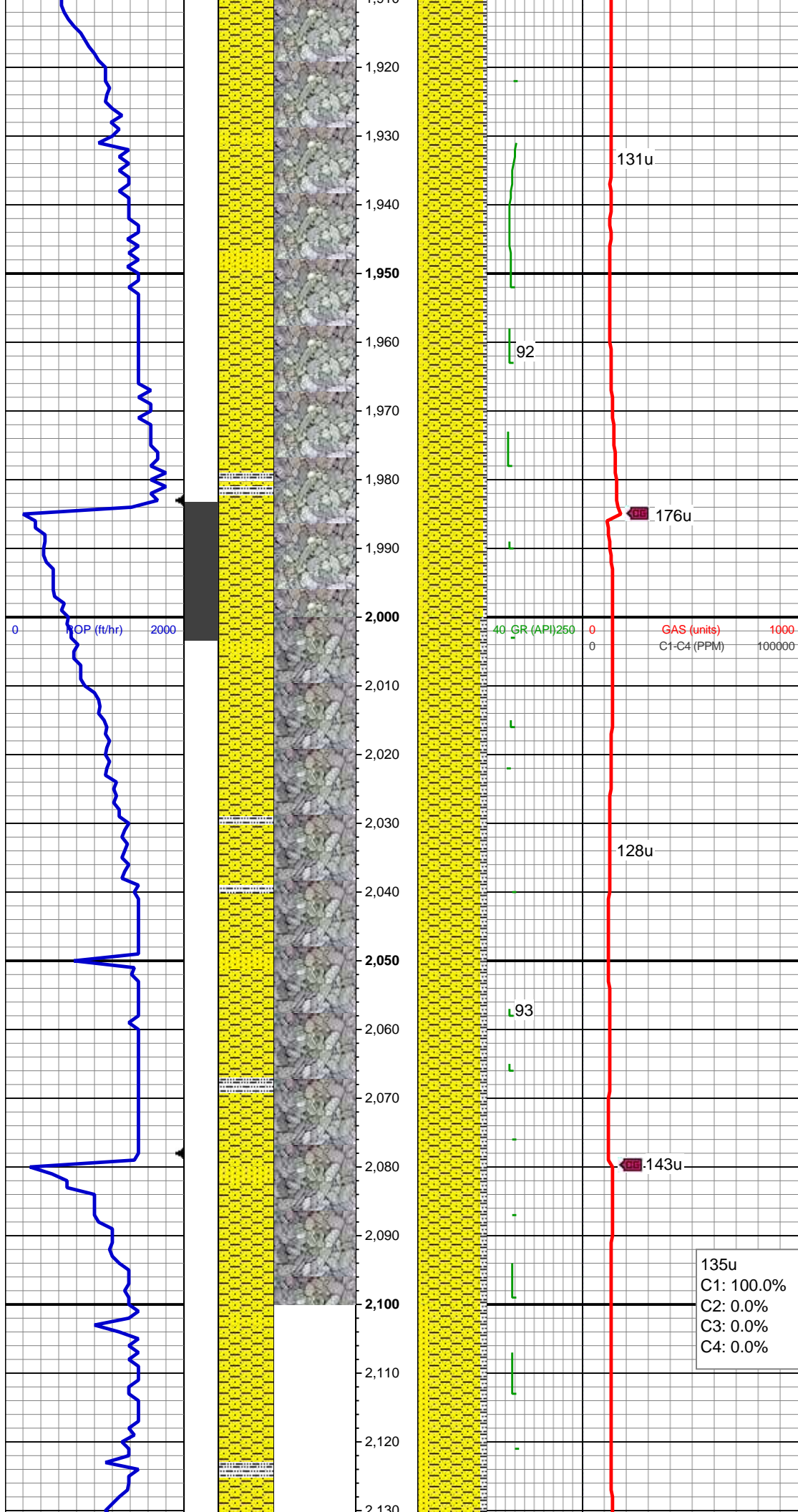
40 GR (API) 250 0 GAS (units) 1000
C1-C4 (PPM) 100000

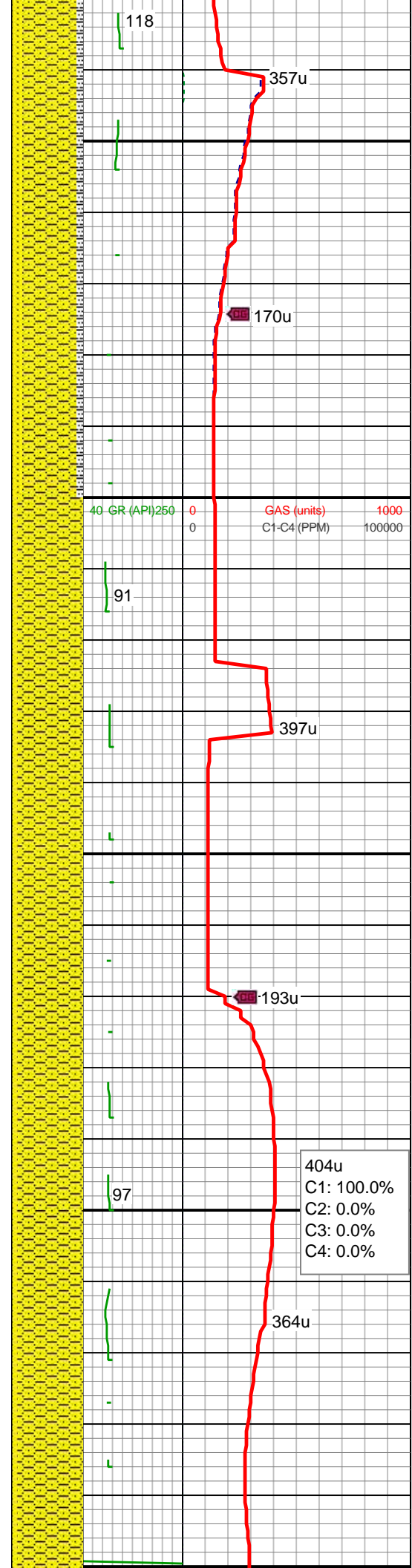
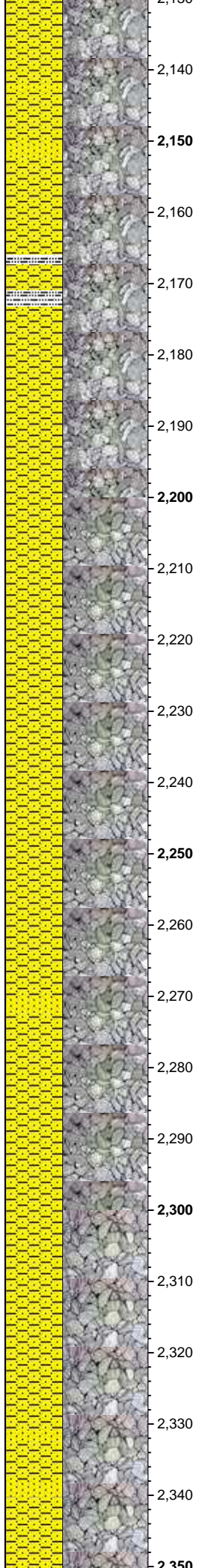
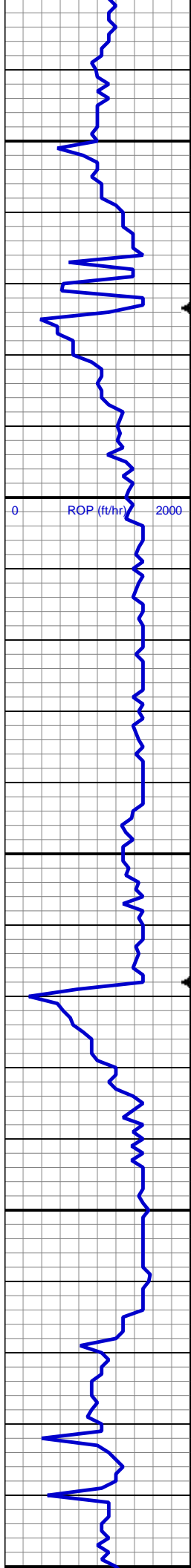
MD: 1,833'
TVD: 0.66'
Inclination: 108.37 °
Azimuth: 1,831.95 °
VS: 2.51'

SHY SS: ltgy-gy, sb ang, v sft, v f gr, w
rnd, mod srt, p por, arg cmt
SS: ltgy-wh-op, s&p ip, sb ang, v fri, f gr -
v f gr, mod rnd, p srt, p por, arg cmt, occ
glau, abnt lith frag
SLTY SH: gy-dk gy, sb bkly-sb plty, v sft,
sly tex, arg cmt

128u
C1: 100.0%
C2: 0.0%
C3: 0.0%
C4: 0.0%

WT IN 8.50/ OUT 8.50
VIS IN 28/ OUT 28





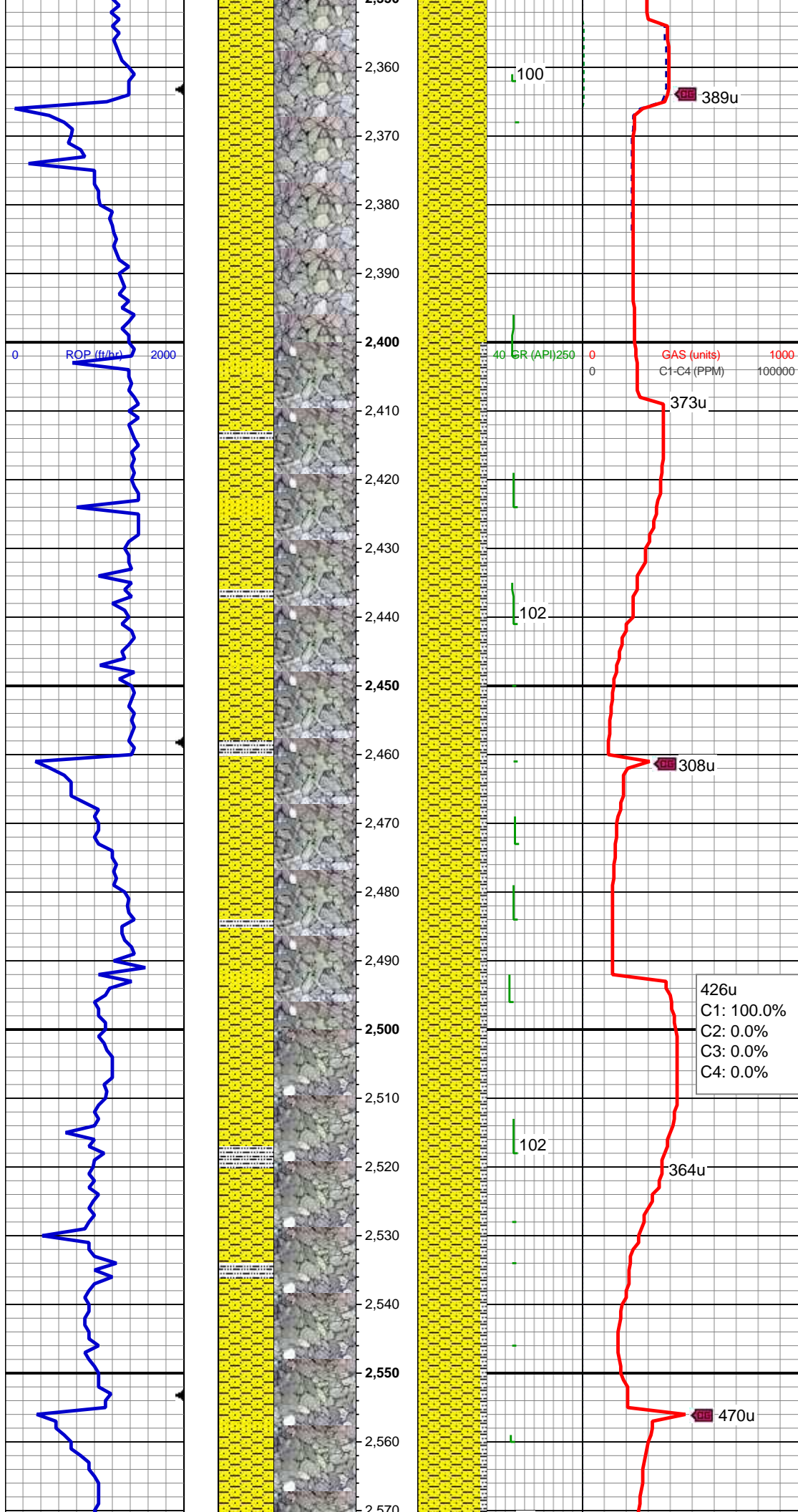
SHY SS: ltgy-gy, sb ang, v sft, v f gr, w
rnd, mod srt, p por, arg cmt
SS: ltgy-wh-op, s&p ip, sb ang, v fri, f gr -
v f gr, mod rnd, p srt, p por, arg cmt, occ
glau, abnt lith frag
SLTY SH: gy-dk gy, sb blkly-sb plty, v sft,
sfty tex, arg cmt

MD: 2,212'
TVD: -25.21'
Inclination: 109.1 °
Azimuth: 2,202.84 °
VS: 0.18'

SHY SS: ltgy-gy, sb ang, v sft, v f gr, w
rnd, mod srt, p por, arg cmt
SS: ltgy-wh-op, sb ang, v fri, f gr - v f gr,
mod rnd, p srt, p por, arg cmt, occ glau,
tr lith frag

MD: 2,307'
TVD: -32.17'
Inclination: 108.89 °
Azimuth: 2,295.41 °
VS: 0.15'

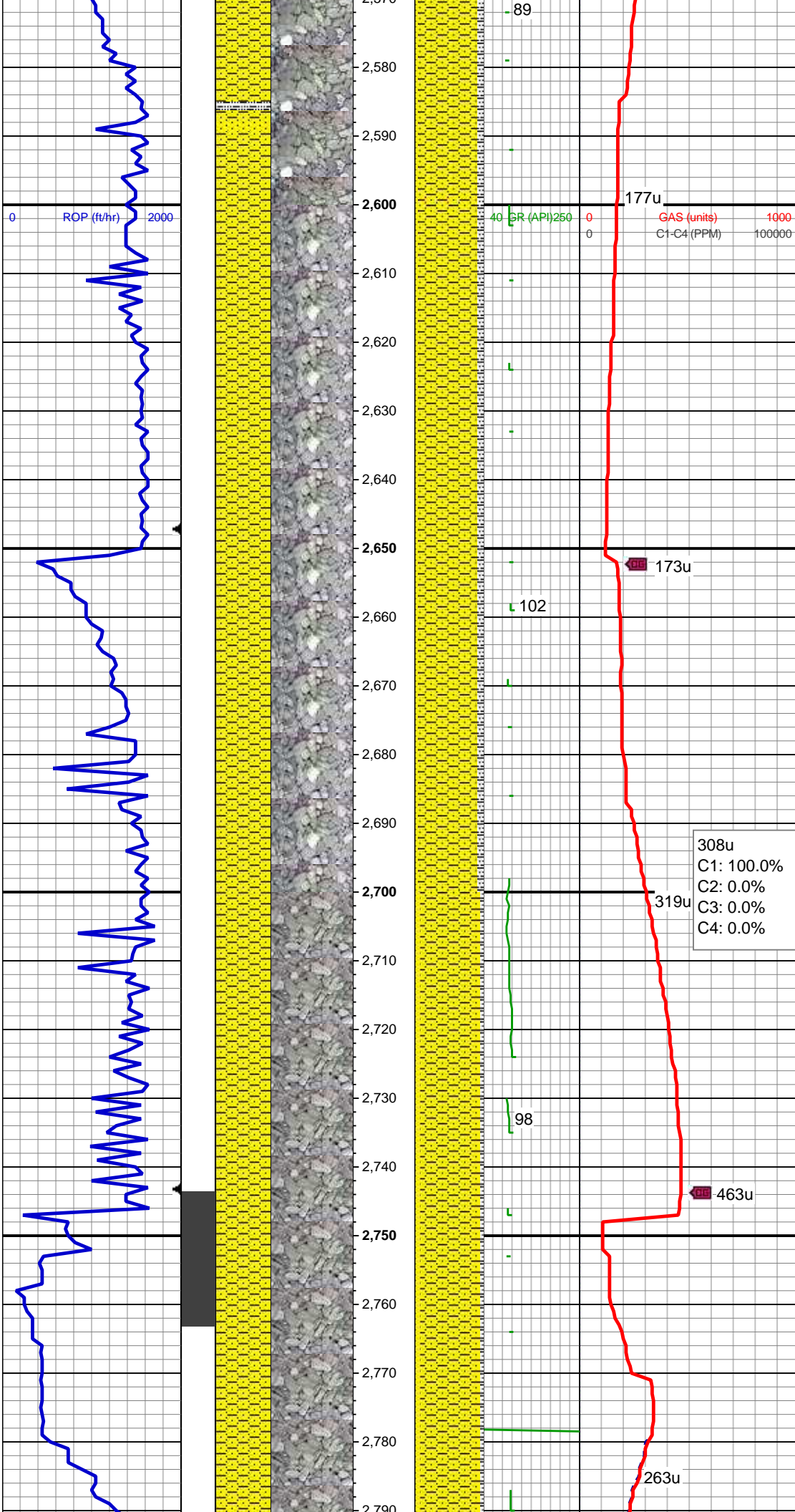
SHY SS: ltgy-gy, sb ang, v sft, v f gr, w
rnd, mod srt, p por, arg cmt
SS: ltgy-wh-op, sb ang, v fri, f gr - v f gr



SHY SS: ltgy-gy, sb ang, v sft, v f gr, w rnd, mod srt, p por, arg cmt, occ glau, tr lith frag

SHY SS: ltgy-gy, sb ang, v sft, v f gr, w rnd, mod srt, p por, arg cmt
SLTY SH: gy-dk gy, sb blkly-sb plty, v sft, slty tex, arg cmt
SS: ltgy-wh-op, s&p ip, sb ang, v fri, f gr - v f gr, mod rnd, p srt, p por, arg cmt, occ glau, abnt lith frag

SHY SS: ltgy-gy, sb ang, v sft, v f gr, w rnd, mod srt, p por, arg cmt
SLTY SH: gy-dk gy, sb blkly-sb plty, v sft, slty tex, arg cmt
SS: ltgy-wh-op, s&p ip, sb ang, v fri, f gr - v f gr, mod rnd, p srt, p por, arg cmt, occ glau, abnt lith frag



MD: 2,591'
TVD: -52.37'
Inclination: 108.77 °
Azimuth: 2,572.81 °
VS: 0.47'

WT IN 8.50/ OUT 8.50
VIS IN 28/ OUT 28

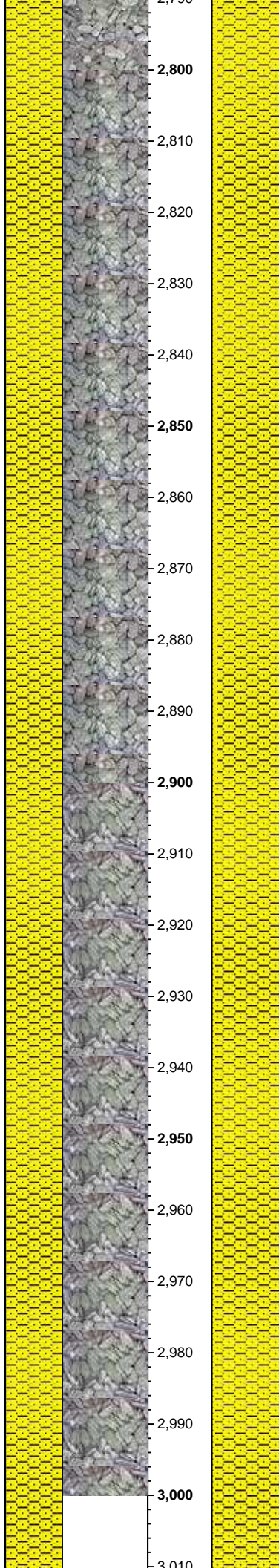
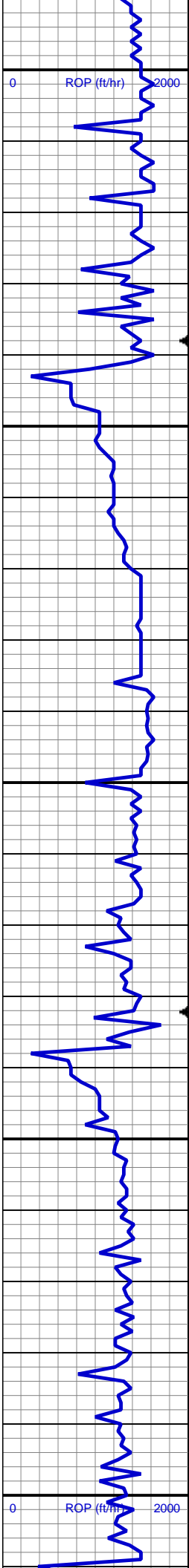
SHY SS: ltgy-gy, sb ang, v sft, v f gr, w
rnd, mod srt, p por, arg cmt
SLTY SH: gy-dk gy, sb blkgy-sb plty, v sft,
sfty tex, arg cmt
SS: ltgy-wh-op, s&p ip, sb ang, v fri, f gr -
v f gr, mod rnd, p srt, p por, arg cmt, occ
glau, abnt lith frag

MD: 2,687'
TVD: -58.73'
Inclination: 108.97 °
Azimuth: 2,666.77 °
VS: 0.04'

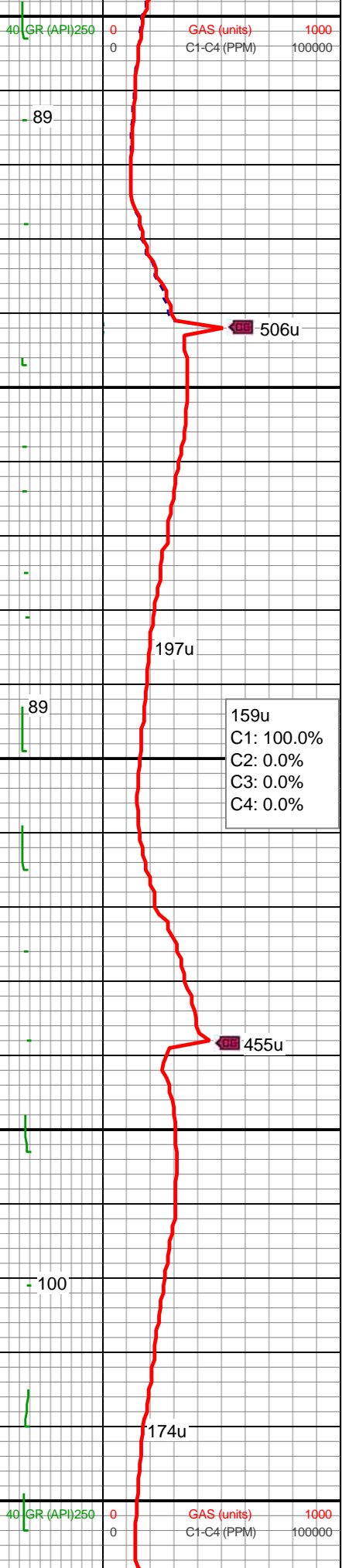
308u
C1: 100.0%
C2: 0.0%
C3: 0.0%
C4: 0.0%

SHY SS: ltgy-gy, sb ang, v sft, v f gr, w
rnd, mod srt, p por, arg cmt
SS: ltgy-wh-op, s&p ip, sb ang, v fri, f gr -
v f gr, mod rnd, p srt, p por, arg cmt, occ
glau, abnt lith frag
SLTY SH: gy-dk gy, sb blkgy-sb plty, v sft,
sfty tex, arg cmt

MD: 2,781'
TVD: -63.42'
Inclination: 99.32 °
Azimuth: 2,758.79 °
VS: 2.1'



2,750
2,800
2,810
2,820
2,830
2,840
2,850
2,860
2,870
2,880
2,890
2,900
2,910
2,920
2,930
2,940
2,950
2,960
2,970
2,980
2,990
3,000
3,010

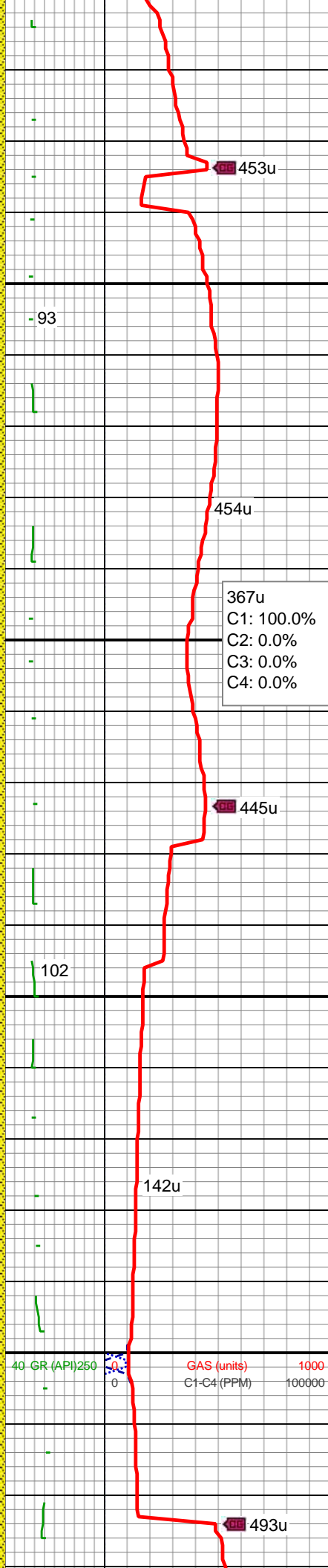
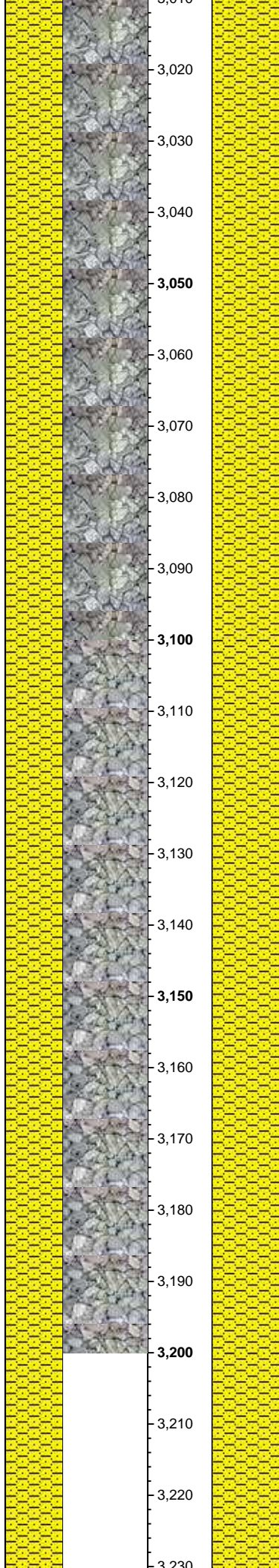
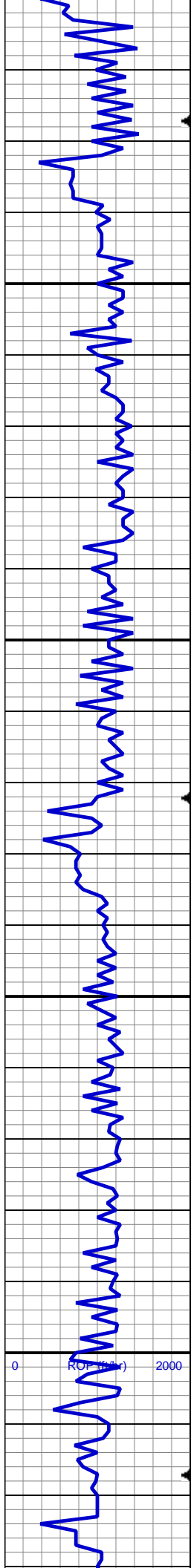


SHY SS: ltgy-gy, sb ang, v sft, v f gr, w
rnd, mod srt, p por, arg cmt
SS: ltgy-wh-op, s&p ip, sb ang, v fri, f gr -
v f gr, mod rnd, p srt, p por, arg cmt, occ
glau, abnt lith frag

MD: 2,876'
TVD: -66.38'
Inclination: 98.21 °
Azimuth: 2,851.77 °
VS: 0.24'

SHY SS: ltgy-gy, sb ang, v sft, v f gr, w
rnd, mod srt, p por, arg cmt
SS: ltgy-wh-op, s&p ip, sb ang, v fri, f gr -
v f gr, mod rnd, p srt, p por, arg cmt, occ
glau, abnt lith frag

MD: 2,971'
TVD: 2,944.75'
Inclination: 11.85 °
Azimuth: 97.88 °
VS: -63.28'



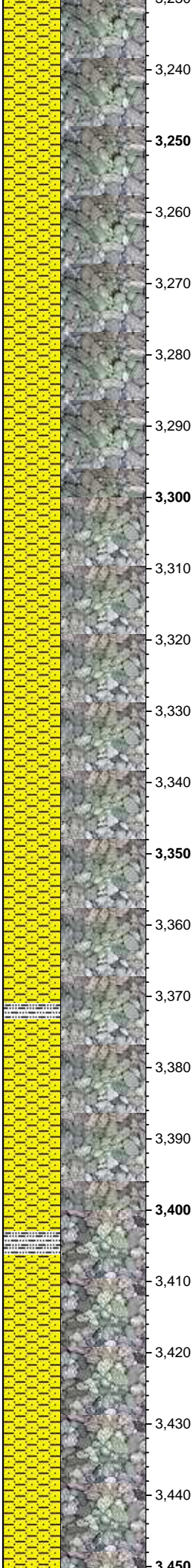
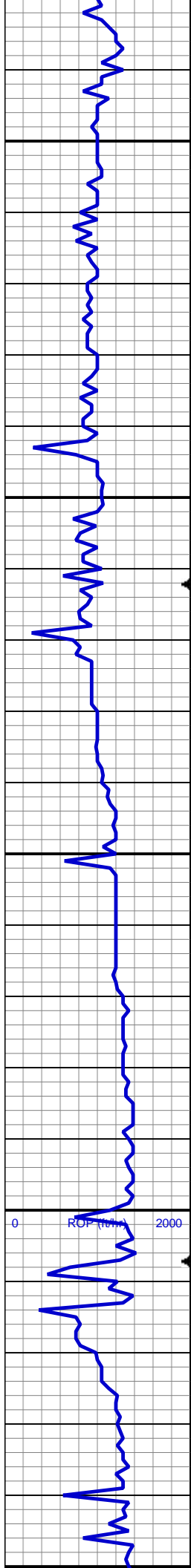
SHY SS: ltgy-gy, sb ang, v sft, v f gr, w
rnd, mod srt, p por, arg cmt
SS: ltgy-wh-op, s&p ip, sb ang, v fri, f gr -
v f gr, mod rnd, p srt, p por, arg cmt, occ
glau, abnt lith frag

MD: 3,066'
TVD: 3,037.79'
Inclination: 11.46 °
Azimuth: 97.96 °
VS: -65.47'

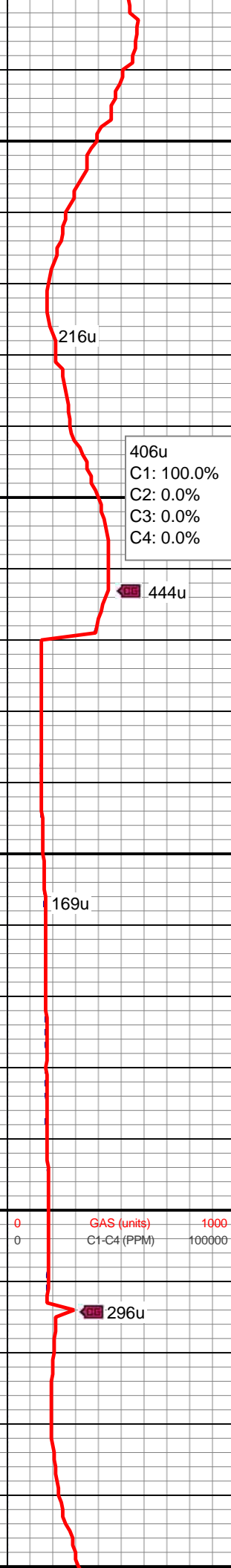
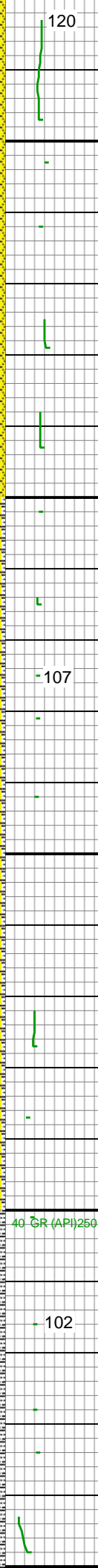
367u
C1: 100.0%
C2: 0.0%
C3: 0.0%
C4: 0.0%

SHY SS: ltgy-gy, sb ang, v sft, v f gr, w
rnd, mod srt, p por, arg cmt

MD: 3,161'
TVD: 3,130.98'
Inclination: 10.96 °
Azimuth: 98.44 °
VS: -67.67'



3,230
3,240
3,250
3,260
3,270
3,280
3,290
3,300
3,310
3,320
3,330
3,340
3,350
3,360
3,370
3,380
3,390
3,400
3,410
3,420
3,430
3,440
3,450



SHY SS: ltgy-gy, sb ang, v sft, v f gr, w
rnd, mod srt, p por, arg cmt

MD: 3,256'
TVD: 3,224.44'
Inclination: 9.65 °
Azimuth: 98.59 °
VS: -69.79'

WT IN 8.55/ OUT 8.55
VIS IN 28/ OUT 28

SHY SS: ltgy-gy, sb ang, v sft, v f gr, w
rnd, mod srt, p por, arg cmt
SLTY SH: gy-dk gy, sb blkgy-sb plty, v sft,
silty tex, arg cmt

MD: 3,351'
TVD: 3,318.12'
Inclination: 9.52 °
Azimuth: 100.87 °
VS: -72.09'

MD: 3,446'
TVD: 3,411.78'
Inclination: 9.74 °
Azimuth: 100.9 °
VS: -74.72'

SHY SS: ltgy-gy, sb ang, v sft, v f gr, w
rnd, mod srt, p por, arg cmt

120

216u

406u
C1: 100.0%
C2: 0.0%
C3: 0.0%
C4: 0.0%

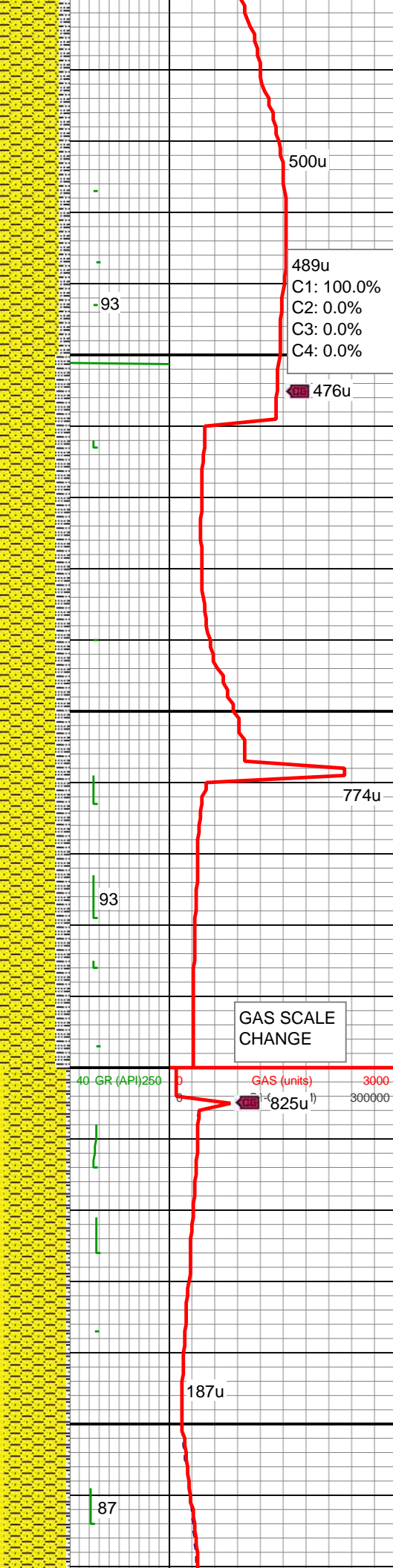
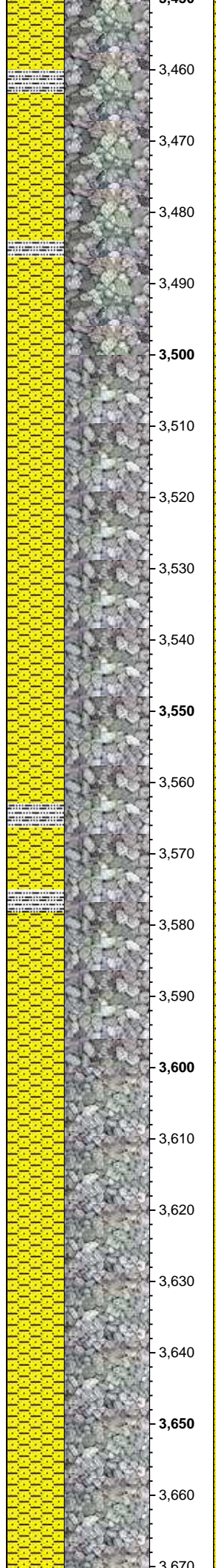
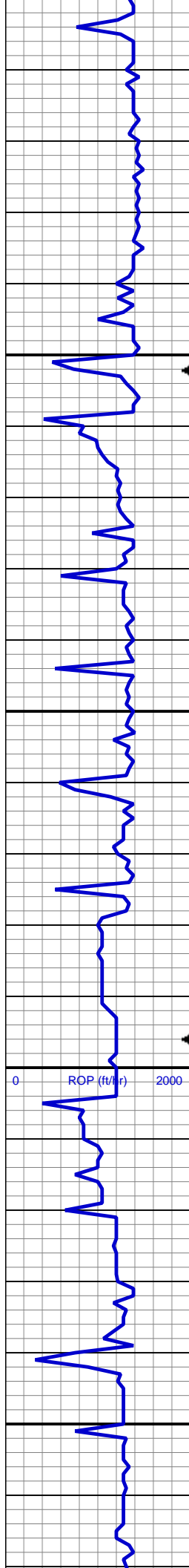
444u

107

169u

102

296u



SLTY SH: gy-dk gy, sb blkly-sb plty, v sft, slty tex, arg cmt

MD: 3,540'
TVD: 3,504.37'
Inclination: 10.11 °
Azimuth: 101.88 °
VS: -77.54'

SHY SS: ltgy-gy, sb ang, v sft, v f- f gr, w rnd, mod srt, p por, arg cmt
SLTY SH: gy-dk gy, sb blkly-sb plty, v sft-sft, slty tex, arg cmt

GAS SCALE CHANGE

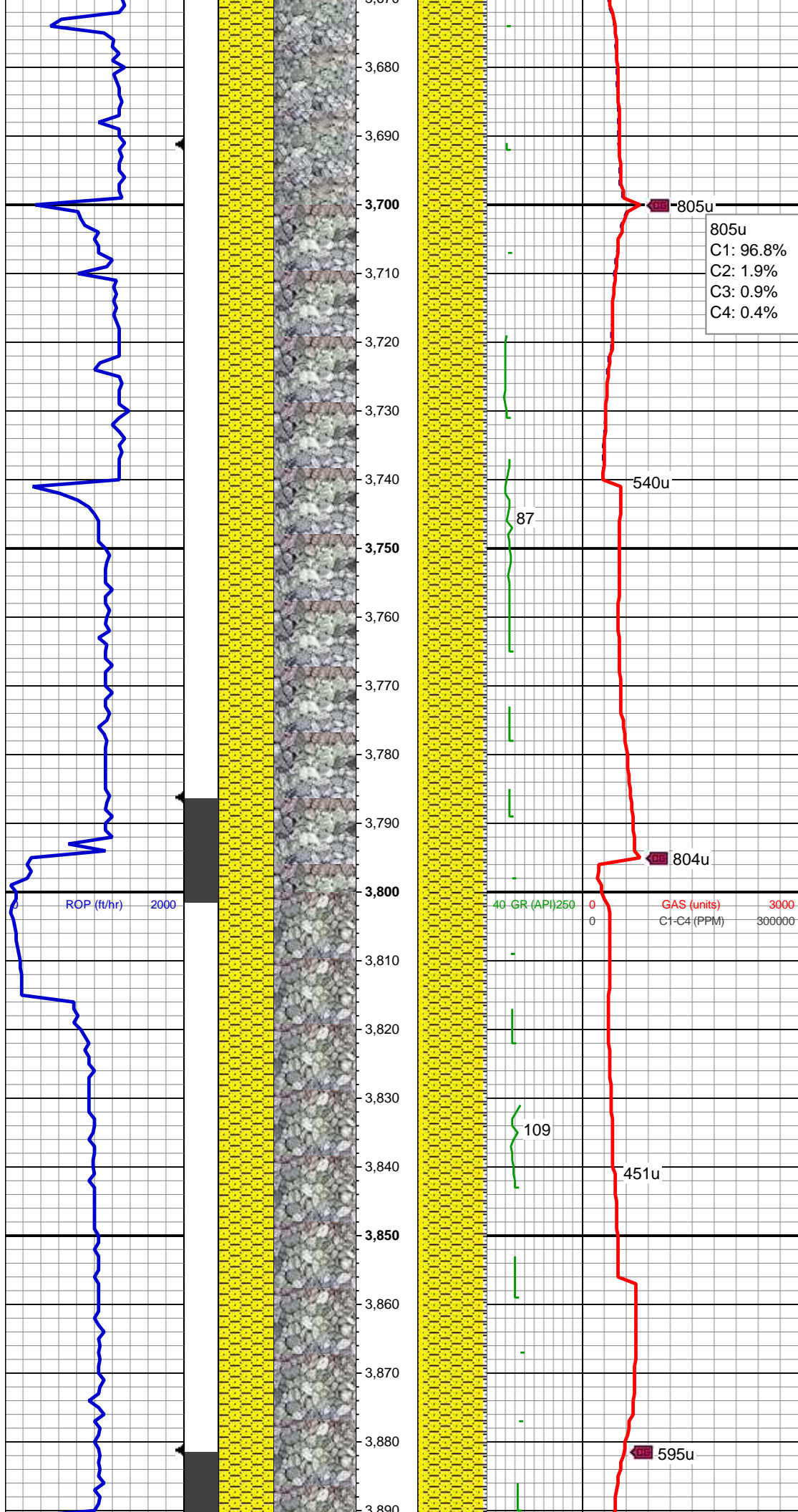
40 GR (API) 250 0 3000
0 300000

GAS (units)

825u

MD: 3,635'
TVD: 3,597.84'
Inclination: 10.5 °
Azimuth: 102.82 °
VS: -80.78'

SHY SS: ltgy-gy, sb ang, v sft, v f gr, w rnd, mod srt, p por, arg cmt
SS: ltgy-wh-op, s&p ip, sb ang, v fri, f gr - v f gr, mod rnd, p srt, p por, arg cmt, occ glau, abnt lith frag
SLTY SH: gy-dk gy, sb blkly-sb plty, v sft, slty tex, arg cmt

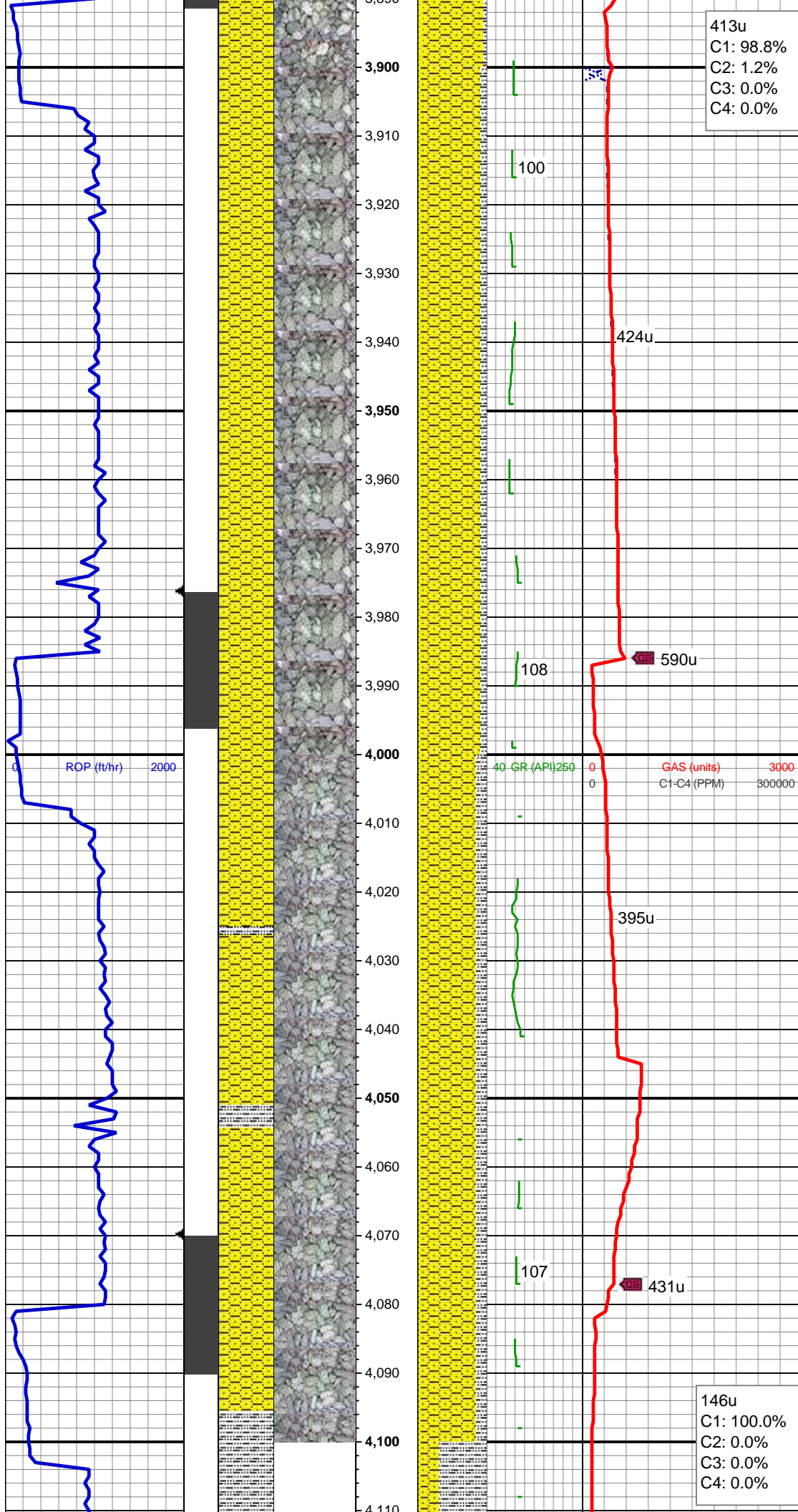


MD: 3,730'
TVD: 3,691.2'
Inclination: 10.83 °
Azimuth: 102.11 °
VS: -84.17'

SHY SS: ltgy-gy, sb ang, v sft, v f gr, w
rnd, mod srt, p por, arg cmt
SS: ltgy-wh-op, s&p ip, sb ang, v fri, f gr -
v f gr, mod rnd, p srt, p por, arg cmt, occ
glau, abnt lith frag
SLTY SH: gy-dk gy, sb blkgy-sb plty, v sft,
sfty tex, arg cmt

MD: 3,825'
TVD: 3,784.68'
Inclination: 9.65 °
Azimuth: 99.09 °
VS: -86.9'

SHY SS: ltgy-gy, sb ang, v sft, v f gr, w
rnd, mod srt, p por, arg cmt
SS: ltgy-wh-op, s&p ip, sb ang, v fri, f gr -
v f gr, mod rnd, p srt, p por, arg cmt, occ
glau, abnt lith frag
SLTY SH: gy-dk gy, sb blkgy-sb plty, v sft,
sfty tex, arg cmt



413u
C1: 98.8%
C2: 1.2%
C3: 0.0%
C4: 0.0%

MD: 3,920'
TVD: 3,878.5'
Inclination: 8.46 °
Azimuth: 90.12 °
VS: -87.82'

SHY SS: Itgy-gy, sb ang, v sft, v f gr, w rnd, mod srt, p por, arg cmt
SLTY SH: gy-dk gy, sb blkgy-sb plty, v sft, slty tex, arg cmt
SS: Itgy-wh-op, s&p ip, sb ang, v fri, f gr - v f gr, mod rnd, p srt, p por, arg cmt, occ glau, abnt lith frag

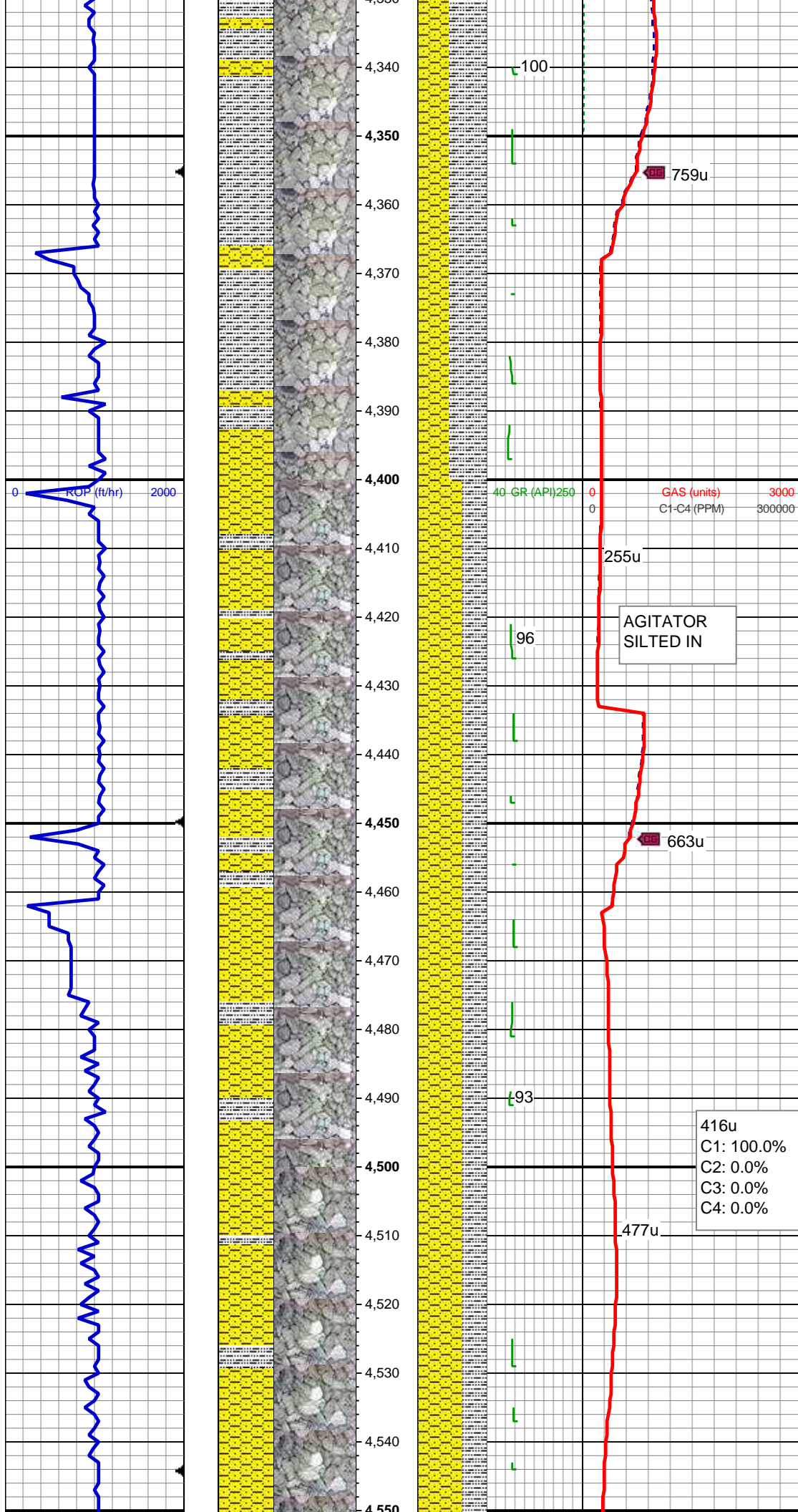
MD: 4,014'
TVD: 3,971.75'
Inclination: 5.99 °
Azimuth: 90.18 °
VS: -87.57'

SHY SS: Itgy-gy, sb ang, v sft, v f gr, w rnd, mod srt, p por, arg cmt
SLTY SH: gy-dk gy, sb blkgy-sb plty, v sft, slty tex, arg cmt
SS: Itgy-wh-op, s&p ip, sb ang, v fri, f gr - v f gr, mod rnd, p srt, p por, arg cmt, occ glau, abnt lith frag

WT IN 8.55/ OUT 8.55
VIS IN 29/ OUT 29

146u
C1: 100.0%
C2: 0.0%
C3: 0.0%
C4: 0.0%

MD: 4,109'
TVD: 4,066.37'
Inclination: 4.25 °



SLTY SH: gy-dk gy, sb blkly-sb plty, v sft, slty tex, arg cmt
SHY SS: ltgy-gy, sb ang, v sft, v f gr, w rnd, mod srt, p por, arg cmt

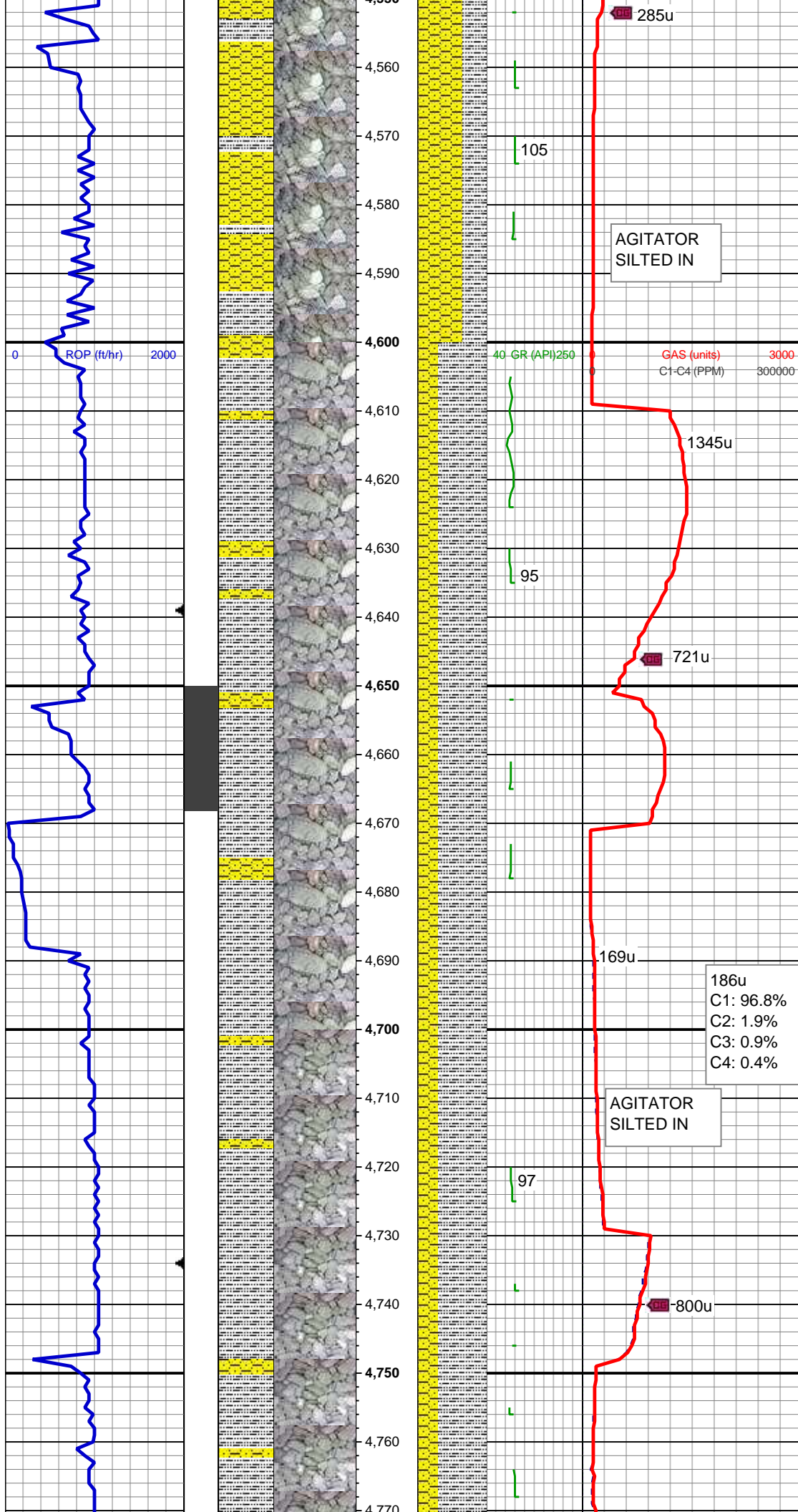
MD: 4,394'
TVD: 4,351.13'
Inclination: 1.93 °
Azimuth: 63.85 °
VS: -84.6'

SHY SS: ltgy-gy, sb ang, v sft, v f gr, w rnd, mod srt, p por, arg cmt
SLTY SH: gy-dk gy, sb blkly-sb plty, v sft, slty tex, arg cmt

MD: 4,488'
TVD: 4,445.08'
Inclination: 2.09 °
Azimuth: 44.67 °
VS: -82.63'

416u
C1: 100.0%
C2: 0.0%
C3: 0.0%
C4: 0.0%

SHY SS: ltgy-gy, sb ang, v sft, v f gr, w rnd, mod srt, p por, arg cmt



SLTY SH: gy-dk gy, sb blkly-sb plty, v sft, slty tex, arg cmt

MD: 4,583'
TVD: 4,540.01'
Inclination: 2.25 °
Azimuth: 33.4 °
VS: -79.78'

WT IN 8.65/ OUT 8.65
VIS IN 46/ OUT 46

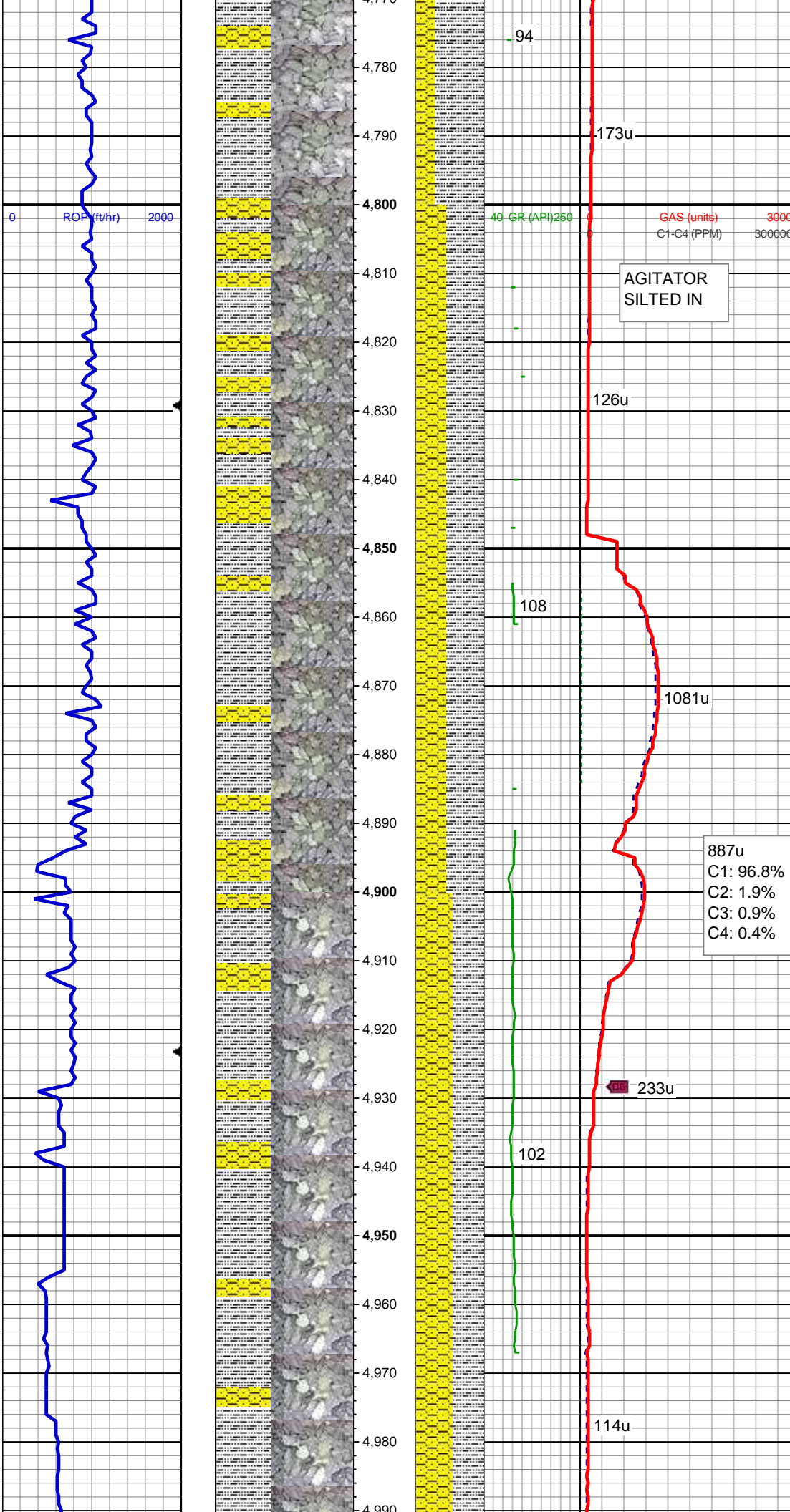
SLTY SH: gy-dk gy, sb blkly-sb plty, v sft, slty tex, arg cmt
SHY SS: ltgy-gy, sb ang, v sft, v f gr, w rnd, mod srt, p por, arg cmt

MD: 4,678'
TVD: 4,634.98'
Inclination: 0.37 °
Azimuth: 57.47 °
VS: -78.03'

SLTY SH: gy-dk gy, sb blkly-sb plty, v sft, slty tex, arg cmt
SHY SS: ltgy-gy, sb ang, v sft, v f gr, w rnd, mod srt, p por, arg cmt

MD: 4,773'
TVD: 4,729.98'

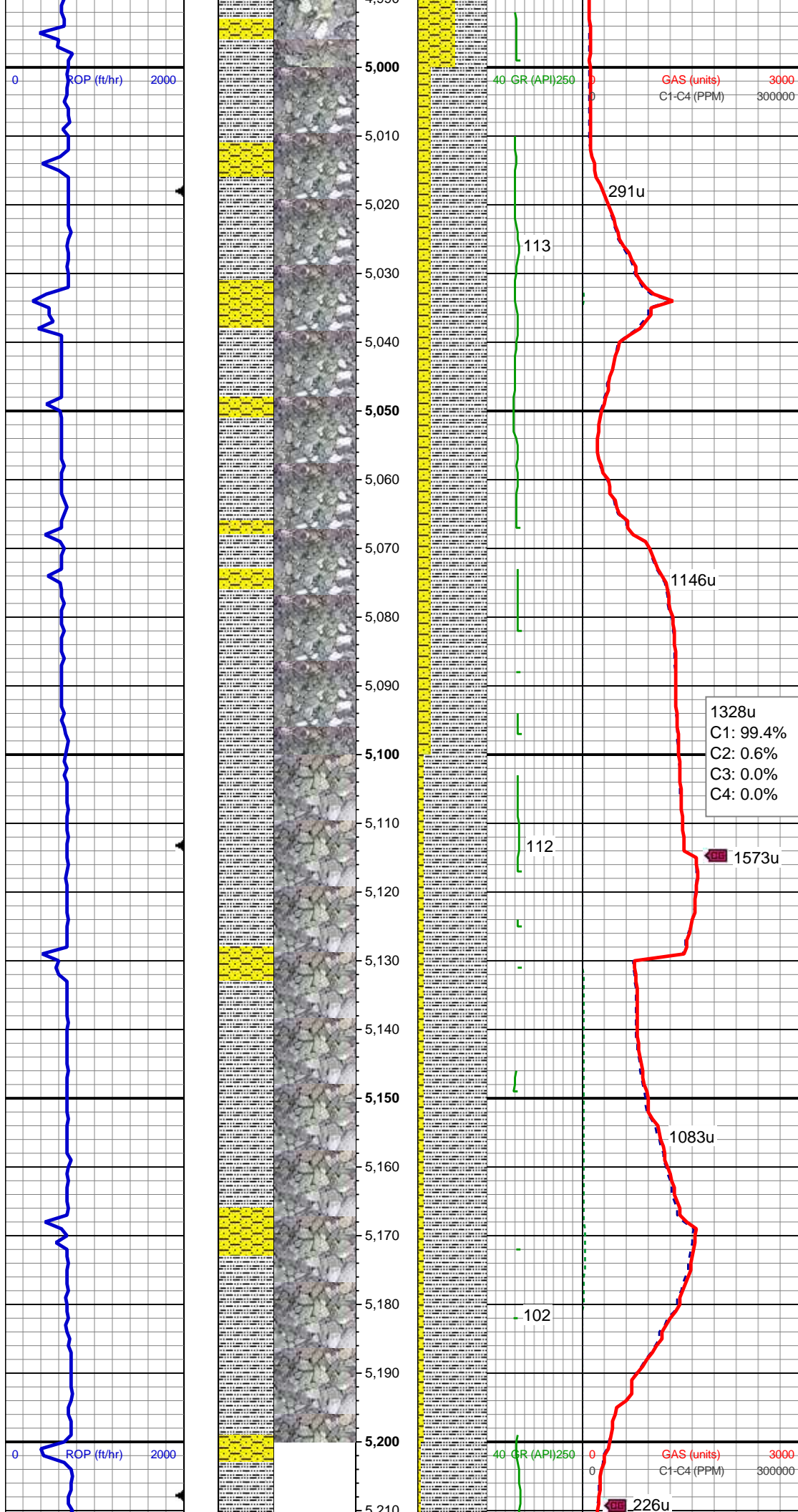
Inclination: 0.65 °
Azimuth: 304.44 °
VS: -77.57'



WT IN 8.95/ OUT 8.95
VIS IN 42/ OUT 42

SLTY SH: gy-dk gy, sb blkly-sb plty, v sft,
silty tex, arg cmt
SHY SS: ltgy-gy, sb ang, v sft, v f gr, w
rnd, mod srt, p por, arg cmt

SHY SS: ltgy-gy, sb ang, v sft, v f gr, w
rnd, mod srt, p por, arg cmt
SLTY SH: gy-dk gy, sb blkly-sb plty, v sft,
silty tex, arg cmt, tr pyr



SLTY SH: gy-dk gy, sb blkly-sb plty, v sft, slty tex, arg cmt
SHY SS: ltgy-gy, sb ang, v sft, v f gr, w rnd, mod srt, p por, arg cmt, tr pyr

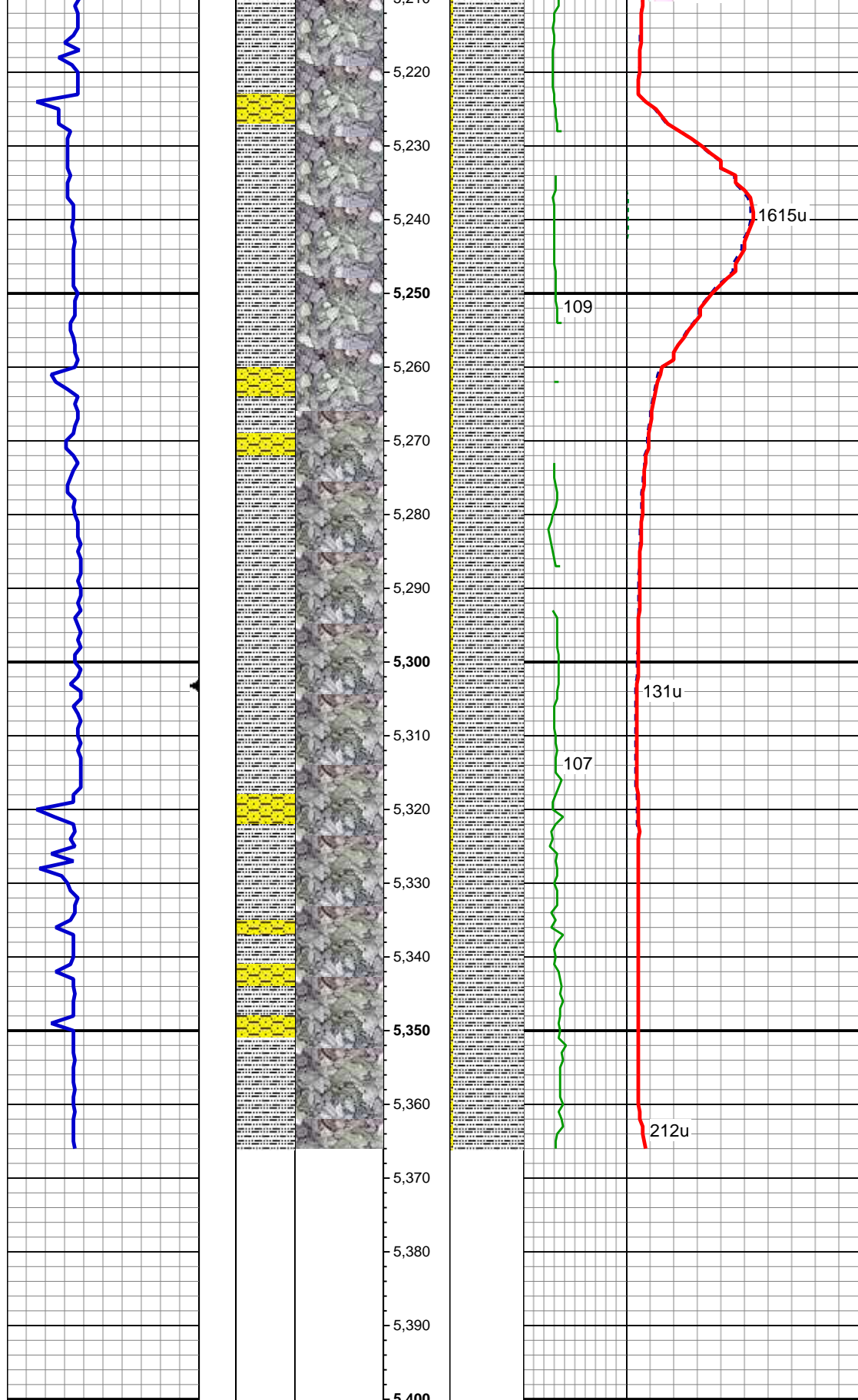
WT IN 9.25/ OUT 9.25
VIS IN 41/ OUT 41

MD: 5,057'
TVD: 5,013.93'
Inclination: 1.39 °
Azimuth: 325.36 °
VS: -73.9'

1328u
C1: 99.4%
C2: 0.6%
C3: 0.0%
C4: 0.0%

SLTY SH: gy-dk gy, sb blkly-sb plty, v sft, slty tex, arg cmt
SHY SS: ltgy-gy, sb ang, v sft, v f gr, w rnd, mod srt, p por, arg cmt

MD: 5,152'
TVD: 5,108.9'
Inclination: 1.51 °
Azimuth: 316.03 °
VS: -72.09'



MD: 5,247'
TVD: 5,203.87'
Inclination: 1.4 °
Azimuth: 312.4 °
VS: -70.45'

SLTY SH: gy-dk gy, sb blkly-sb plty, v sft,
sly tex, arg cmt
SHY SS: ltgy-gy, sb ang, v sft, v f gr, w
rnd, mod srt, p por, arg cmt

MD: 5,310'
TVD: 5,266.85'
Inclination: 1.2 °
Azimuth: 321.28 °
VS: -69.44'

WT IN 9.30/ OUT 9.30
VIS IN 41/ OUT 41

SLTY SH: gy-dk gy, sb blkly-sb plty, v sft,
sly tex, arg cmt
SHY SS: ltgy-gy, sb ang, v sft, v f gr, w
rnd, mod srt, p por, arg cmt

TD @ 5366' MD
05/09/2014 @ 3:05 AM

LOG CONTINUES ON MPlot
"RICO LC29-74-1HNA HORZ"