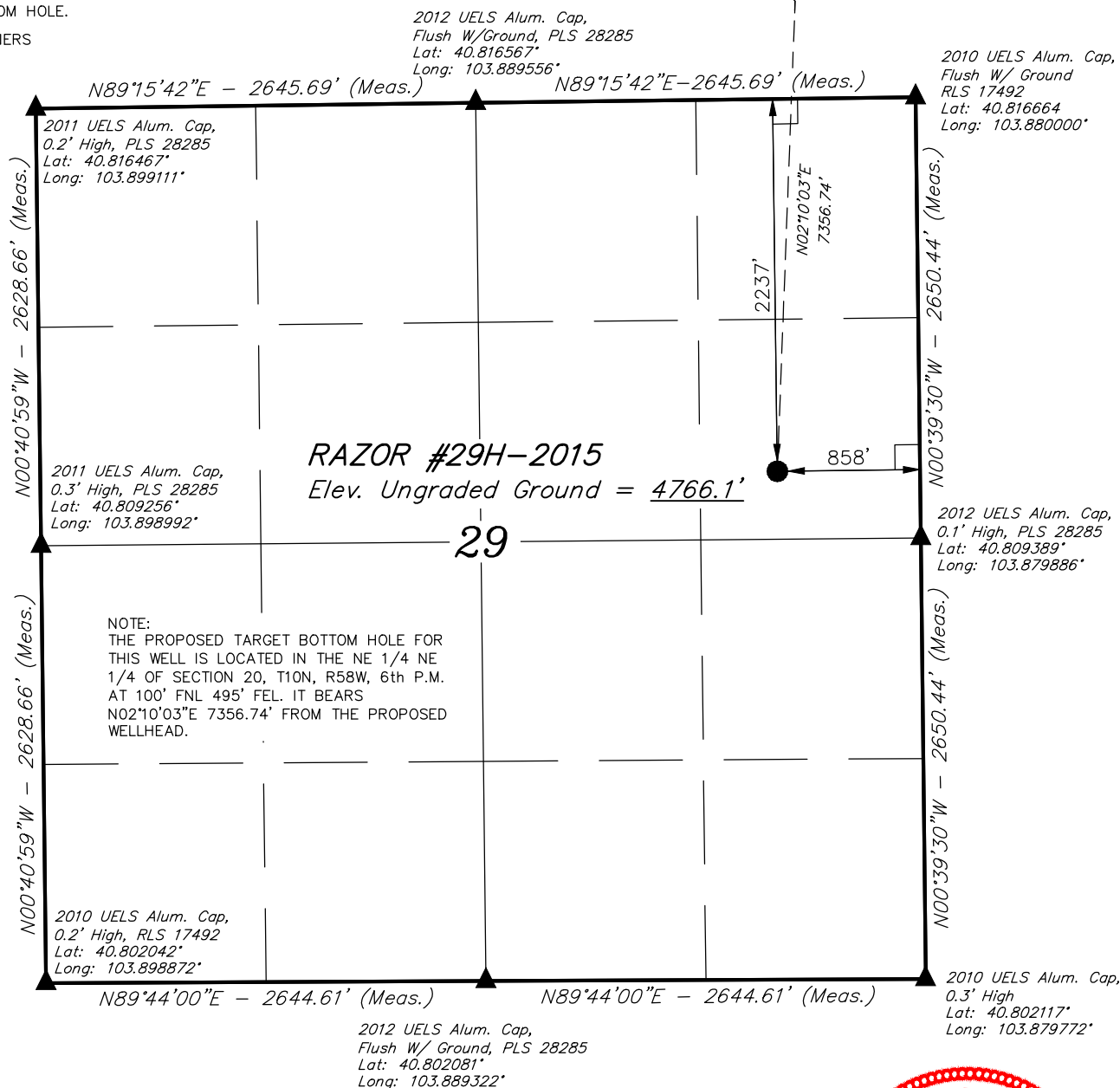


LEGEND:

- = 90° SYMBOL
 = PROPOSED WELLHEAD.
 = TARGET BOTTOM HOLE.
 = SECTION CORNERS LOCATED.

T10N, R58W, 6th P.M.



PDOP = 1.2

NAD 83 (SURFACE LOCATION)
LATITUDE = 40°48'37.77" (40.810492)
LONGITUDE = 103°52'58.81" (103.883003)
NAD 27 (SURFACE LOCATION)
LATITUDE = 40°48'37.82" (40.810506)
LONGITUDE = 103°52'57.00" (103.882500)

CERTIFICATE
 THIS IS TO CERTIFY THAT THE ABOVE PLAT WAS PREPARED FROM FIELD NOTES OF ACTUAL SURVEYS MADE BY ME OR UNDER MY SUPERVISION AND THAT THE SAME ARE TRUE AND CORRECT TO THE BEST OF MY KNOWLEDGE AND BELIEF.

REGISTERED LAND SURVEYOR
 REGISTRATION NO. 28285
 STATE OF COLORADO

BASIS OF BEARINGS
 BASIS OF BEARINGS IS A G.P.S. OBSERVATION
BASIS OF ELEVATION

SPOT ELEVATION LOCATED AT THE NORTHEAST CORNER OF SECTION 15, T9N, R58W, 6th P.M. TAKEN FROM THE GATEHOOK SPRING, QUADRANGLE, COLORADO, WELD COUNTY, 7.5 MINUTE QUAD (TOPOGRAPHIC MAP) PUBLISHED BY THE UNITED STATES DEPARTMENT OF THE INTERIOR, GEOLOGICAL SURVEY. SAID ELEVATION IS MARKED AS BEING 4679 FEET.

WHITING OIL & GAS CORP.

RAZOR #29H-2015 (SURFACE LOCATION)
SE 1/4 NE 1/4, SECTION 29, T10N, R58W, 6th P.M.
WELD COUNTY, COLORADO

SURVEYED BY: DALLAS NIELSEN, L.P.	DATE: 04-18-14
DRAWN BY: C.D.	SCALE: 1" = 1000'
DATE DRAWN: 04-24-14	REVISION: 00-00-00

WELL LOCATION PLAT



UELS, LLC
 Corporate Office * 85 South 200 East
 Vernal, UT 84078 * (435) 789-1017



LEGEND:

└ = 90° SYMBOL

● = PROPOSED WELLHEAD.

○ = TARGET BOTTOM HOLE.

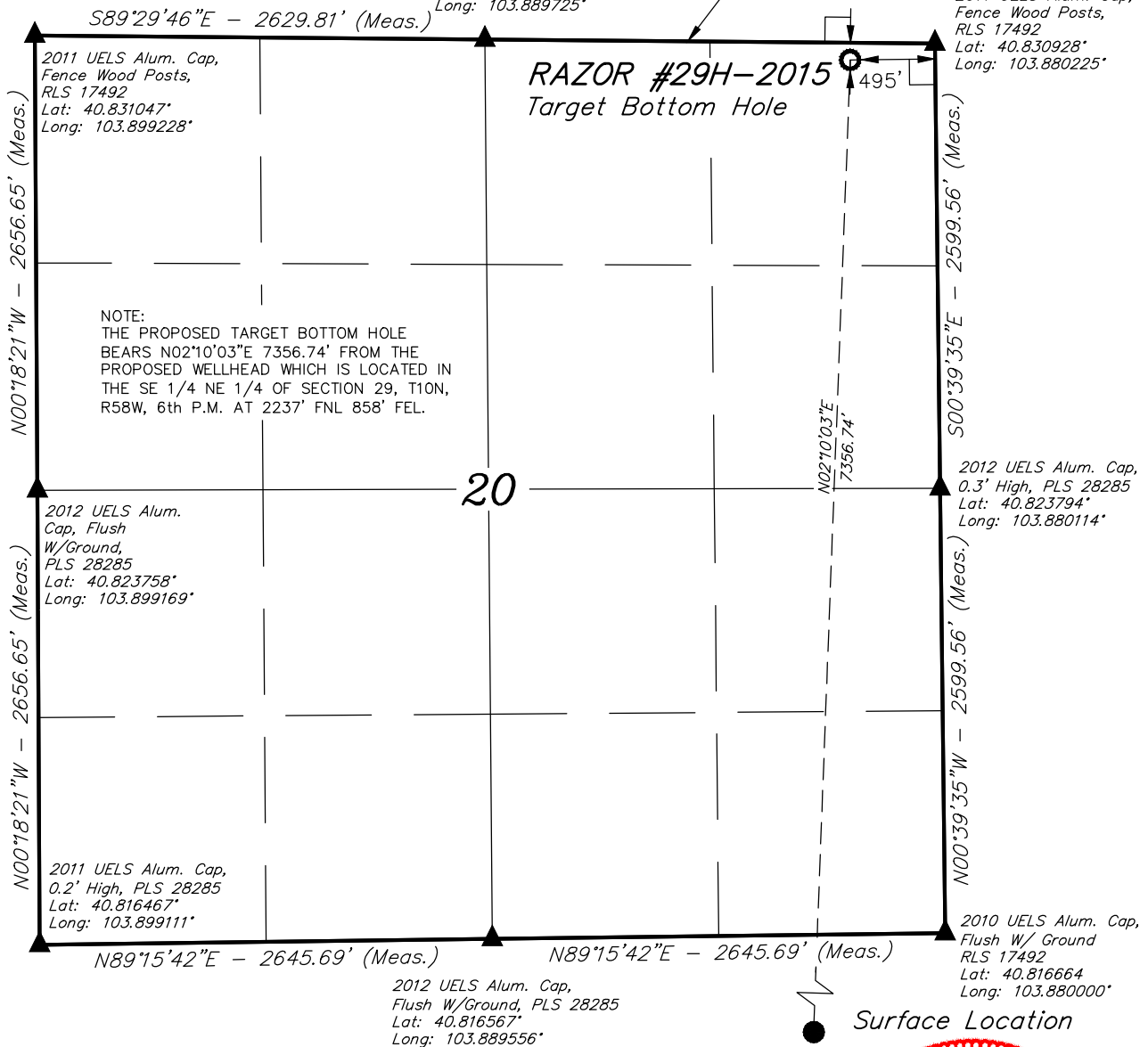
▲ = SECTION CORNERS LOCATED.

T10N, R58W, 6th P.M.

N89°29'46"W - 2629.81' (Meas.)

2012 UELS Alum. Cap,
0.3' High, PLS 28285
Lat: 40.830989°
Long: 103.889725°

2011 UELS Alum. Cap,
Fence Wood Posts,
RLS 17492
Lat: 40.830928°
Long: 103.880225°



1000'	500'	0	1000'
NAD 83 (TARGET BOTTOM HOLE) LATITUDE = 40°49'50.40" (40.830667) LONGITUDE = 103°52'55.24" (103.882011)			
NAD 27 (TARGET BOTTOM HOLE) LATITUDE = 40°49'50.45" (40.830681) LONGITUDE = 103°52'53.43" (103.881508)			

CERTIFICATE

THIS IS TO CERTIFY THAT THE ABOVE PLAT WAS PREPARED FROM FIELD NOTES OF ACTUAL SURVEYS MADE BY ME OR UNDER MY SUPERVISION AND THAT THE SAME ARE TRUE AND CORRECT TO THE BEST OF MY KNOWLEDGE AND BELIEF.

REGISTERED LAND SURVEYOR
REGISTRATION NO. 28285
STATE OF COLORADO

BASIS OF BEARINGS

BASIS OF BEARINGS IS A G.P.S. OBSERVATION

BASIS OF ELEVATION

SPOT ELEVATION LOCATED AT THE NORTHEAST CORNER OF SECTION 15, T9N, R58W, 6th P.M. TAKEN FROM THE GATEHOOK SPRING, QUADRANGLE, COLORADO, WELD COUNTY, 7.5 MINUTE QUAD (TOPOGRAPHIC MAP) PUBLISHED BY THE UNITED STATES DEPARTMENT OF THE INTERIOR, GEOLOGICAL SURVEY. SAID ELEVATION IS MARKED AS BEING 4679 FEET.

WHITING OIL & GAS CORP.

RAZOR #29H-2015 (TARGET BOTTOM HOLE)
NE 1/4 NE 1/4, SECTION 20, T10N, R58W, 6th P.M.
WELD COUNTY, COLORADO

SURVEYED BY: DALLAS NIELSEN, L.P.	DATE: 04-18-14
DRAWN BY: C.D.	SCALE: 1" = 1000'
DATE DRAWN: 04-24-14	REVISION: 00-00-00
WELL LOCATION PLAT	



UELS, LLC
Corporate Office * 85 South 200 East
Vernal, UT 84078 * (435) 789-1017

