



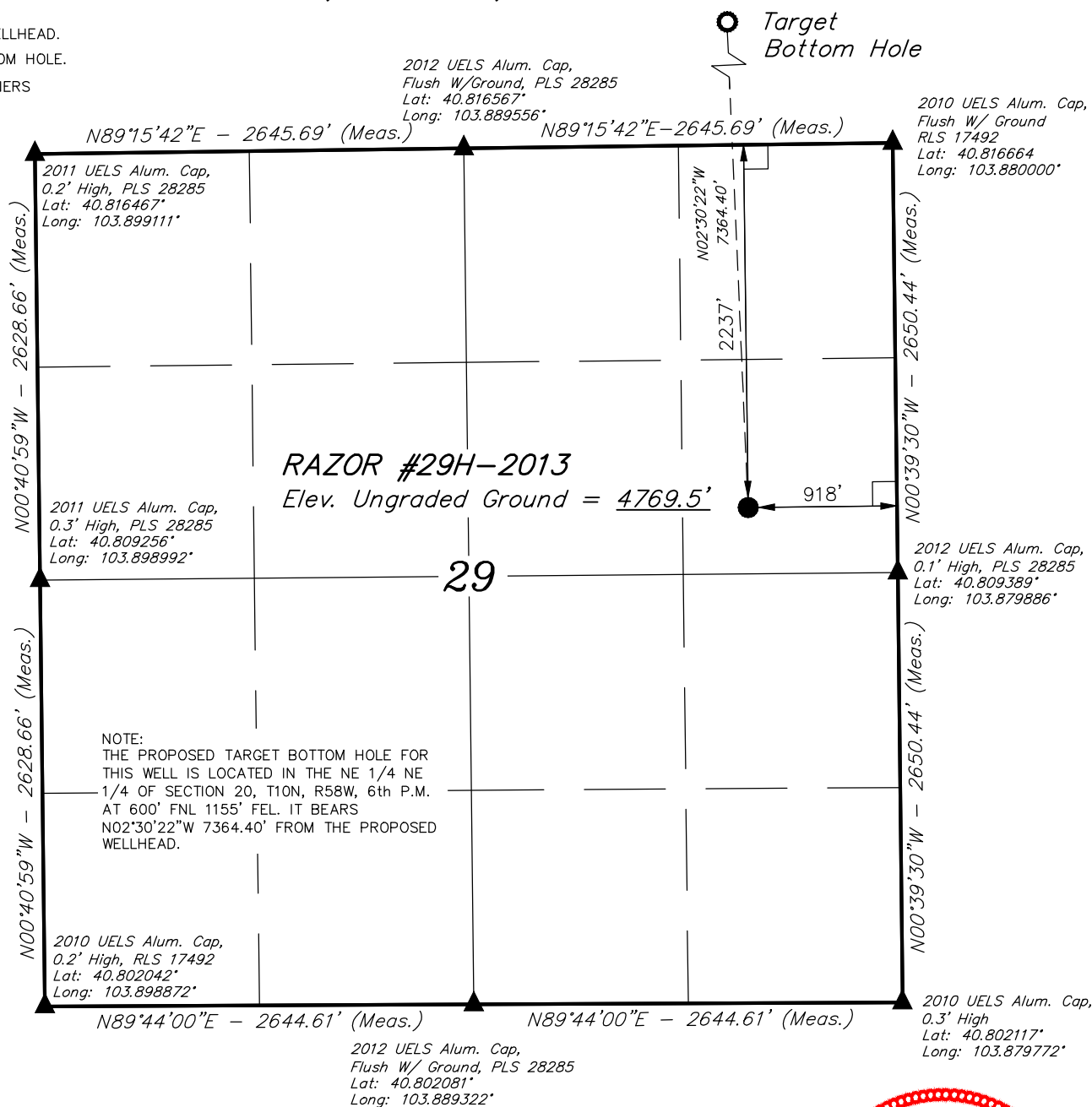


# LEGEND:

-  = 90° SYMBOL
-  = PROPOSED WELLHEAD.
-  = TARGET BOTTOM HOLE.
-  = SECTION CORNERS LOCATED.

**T10N, R58W, 6th P.M.**



PDOP = 1.3

1000' 500' 0 1000'

<b>NAD 83 (SURFACE LOCATION)</b>
LATITUDE = 40°48'37.77" (40.810492)
LONGITUDE = 103°52'59.59" (103.883219)
<b>NAD 27 (SURFACE LOCATION)</b>
LATITUDE = 40°48'37.82" (40.810506)
LONGITUDE = 103°52'57.78" (103.882717)

**CERTIFICATE**  
THIS IS TO CERTIFY THAT THE ABOVE PLAT WAS PREPARED FROM FIELD NOTES OF ACTUAL SURVEYS MADE BY ME OR UNDER MY SUPERVISION AND THAT THE SAME ARE TRUE AND CORRECT TO THE BEST OF MY KNOWLEDGE AND BELIEF.

REGISTERED LAND SURVEYOR  
REGISTRATION NO. 28285  
STATE OF COLORADO  
05-07-14

**BASIS OF BEARINGS**  
BASIS OF BEARINGS IS A G.P.S. OBSERVATION  
**BASIS OF ELEVATION**

SPOT ELEVATION LOCATED AT THE NORTHEAST CORNER OF SECTION 15, T9N, R58W, 6th P.M. TAKEN FROM THE GATEHOOK SPRING, QUADRANGLE, COLORADO, WELD COUNTY, 7.5 MINUTE QUAD (TOPOGRAPHIC MAP) PUBLISHED BY THE UNITED STATES DEPARTMENT OF THE INTERIOR, GEOLOGICAL SURVEY. SAID ELEVATION IS MARKED AS BEING 4679 FEET.

**WHITING OIL & GAS CORP.**

**RAZOR #29H-2013 (SURFACE LOCATION)**  
**SE 1/4 NE 1/4, SECTION 29, T10N, R58W, 6th P.M.**  
**WELD COUNTY, COLORADO**

SURVEYED BY: DALLAS NIELSEN, L.P.	DATE: 04-18-14
DRAWN BY: C.D.	SCALE: 1" = 1000'
DATE DRAWN: 04-24-14	REVISION: 00-00-00
<b>WELL LOCATION PLAT</b>	



**UELS, LLC**  
Corporate Office \* 85 South 200 East  
Vernal, UT 84078 \* (435) 789-1017



**LEGEND:**

└ = 90° SYMBOL

● = PROPOSED WELLHEAD.

○ = TARGET BOTTOM HOLE.

▲ = SECTION CORNERS LOCATED.

**T10N, R58W, 6th P.M.**

S89°29'46"E - 2629.81' (Meas.)

2012 UELS Alum. Cap,  
0.3' High, PLS 28285  
Lat: 40.830989°  
Long: 103.889725°2011 UELS Alum. Cap,  
Fence Wood Posts,  
RLS 17492  
Lat: 40.830928°  
Long: 103.880225°2011 UELS Alum. Cap,  
Fence Wood Posts,  
RLS 17492  
Lat: 40.831047°  
Long: 103.899228°**RAZOR #29H-2013**  
Target Bottom HoleNOTE:  
THE PROPOSED TARGET BOTTOM HOLE  
BEARS N02°30'22"W 7364.40'  
FROM THE PROPOSED WELLHEAD WHICH IS LOCATED IN  
THE SE 1/4 NE 1/4 OF SECTION 29, T10N,  
R58W, 6th P.M. AT 2237' FNL 918' FEL.**20**2012 UELS Alum.  
Cap, Flush  
W/Ground,  
PLS 28285  
Lat: 40.823758°  
Long: 103.899169°2011 UELS Alum. Cap,  
0.2' High, PLS 28285  
Lat: 40.816467°  
Long: 103.899111°2012 UELS Alum. Cap,  
0.3' High, PLS 28285  
Lat: 40.823794°  
Long: 103.880114°2010 UELS Alum. Cap,  
Flush W/ Ground  
RLS 17492  
Lat: 40.816664°  
Long: 103.880000°2012 UELS Alum. Cap,  
Flush W/Ground, PLS 28285  
Lat: 40.816567°  
Long: 103.889556°

● Surface Location

**NAD 83 (TARGET BOTTOM HOLE)**LATITUDE = 40°49'50.45" (40.830681)  
LONGITUDE = 103°53'03.82" (103.884394)**NAD 27 (TARGET BOTTOM HOLE)**LATITUDE = 40°49'50.50" (40.830694)  
LONGITUDE = 103°53'02.01" (103.883892)**CERTIFICATE**THIS IS TO CERTIFY THAT THE ABOVE PLAT WAS PREPARED FROM FIELD  
NOTES OF ACTUAL SURVEYS MADE BY ME OR UNDER MY SUPERVISION  
AND THAT THE SAME ARE TRUE AND CORRECT TO THE BEST OF MY  
KNOWLEDGE AND BELIEF.REGISTERED LAND SURVEYOR  
REGISTRATION NO. 28285  
STATE OF COLORADO

05-07-14

**BASIS OF BEARINGS**

BASIS OF BEARINGS IS A G.P.S. OBSERVATION

**BASIS OF ELEVATION**SPOT ELEVATION LOCATED AT THE NORTHEAST CORNER OF SECTION 15, T9N, R58W,  
6th P.M. TAKEN FROM THE GATEHOOK SPRING, QUADRANGLE, COLORADO,  
WELD COUNTY, 7.5 MINUTE QUAD (TOPOGRAPHIC MAP) PUBLISHED BY  
THE UNITED STATES DEPARTMENT OF THE INTERIOR, GEOLOGICAL SURVEY.  
SAID ELEVATION IS MARKED AS BEING 4679 FEET.**WHITING OIL & GAS CORP.****RAZOR #29H-2013 (TARGET BOTTOM HOLE)**  
**NE 1/4 NE 1/4, SECTION 20, T10N, R58W, 6th P.M.**  
**WELD COUNTY, COLORADO**

SURVEYED BY: DALLAS NIELSEN, L.P. DATE: 04-18-14

DRAWN BY: C.D.

SCALE: 1" = 1000'

DATE DRAWN: 04-24-14

REVISION: 00-00-00

**WELL LOCATION PLAT****UELS, LLC**  
Corporate Office \* 85 South 200 East  
Vernal, UT 84078 \* (435) 789-1017