

KERR-MCGEE OIL & GAS ONSHORE LP

COLORADO Slot: SLOT#08 SUMMIT 34C-32HZ (395FSL & 881FWL, SEC.29)

Field: WELD COUNTY (KERR MCGEE) Well: SUMMIT 34C-32HZ

Facility: SEC.29-T2N-R65W Wellbore: SUMMIT 34C-32HZ PWB

Plot reference wellpath is SUMMIT 34C-32HZ PWP (REV-A.0)

True vertical depths are referenced to XTREME 6 (16KB) (RKB)	Grid System: NAD83 / Lambert Colorado SP, Northern Zone (501), US feet
Measured depths are referenced to XTREME 6 (16KB) (RKB)	North Reference: True north
XTREME 6 (16KB) (RKB) to Mean Sea Level: 4957 feet	Scale: True distance
Mean Sea Level to Mud line (At Slot: SLOT#08 SUMMIT 34C-32HZ (395FSL & 881FWL, SEC.29)): 0 feet	Depths are in feet
Coordinates are in feet referenced to Slot	Created by: amarcar on 9/25/2014

Location Information

Facility Name	Grid East (US ft)	Grid North (US ft)	Latitude	Longitude		
SEC.29-T2N-R65W	3225918.182	1281512.847	40°06'11.956"N	104°41'32.485"W		
Slot	Local N (ft)	Local E (ft)	Grid East (US ft)	Grid North (US ft)	Latitude	Longitude
SLOT#08 SUMMIT 34C-32HZ (395FSL & 881FWL, SEC.29)	-0.20	-459.94	3225458.281	1281508.460	40°06'11.952"N	104°41'38.404"W
XTREME 6 (16KB) (RKB) to Mud line (At Slot: SLOT#08 SUMMIT 34C-32HZ (395FSL & 881FWL, SEC.29))					4957ft	
Mean Sea Level to Mud line (At Slot: SLOT#08 SUMMIT 34C-32HZ (395FSL & 881FWL, SEC.29))					0ft	
XTREME 6 (16KB) (RKB) to Mean Sea Level					4957ft	

Survey Program

Start MD (ft)	End MD (ft)	Tool	Model	Log Name/Comment	Wellbore
16.00	1084.00	ISCWSA MWD, Rev. 2	ISCWSA MWD, Rev. 2 (Standard)		SUMMIT 34C-32HZ AWB
1084.00	7741.46	NavitTrak	NavitTrak (MAGCORR, IFR)		SUMMIT 34C-32HZ PWB
7741.46	13077.60	NavitTrak	NavitTrak (MAGCORR, IFR)		SUMMIT 34C-32HZ PWB

Well Profile Data

Design Comment	MD (ft)	Inc (°)	Az (°)	TVD (ft)	Local N (ft)	Local E (ft)	DLS (°/100ft)	VS (ft)
TIE-INTO MWD SURVEY	1084.00	0.800	179.800	1083.97	0.65	3.72	0.37	-0.65
BEGIN NUDGE	1300.05	0.800	179.800	1300.00	-2.36	3.73	0.00	2.36
END NUDGE	2051.17	14.800	284.493	2042.88	16.51	-89.67	2.00	-16.52
BEGIN DROP	4188.97	14.800	284.493	4109.76	153.17	-618.38	0.00	-153.22
END DROP	4928.97	0.000	179.996	4841.56	176.96	-710.40	2.00	-177.01
KOP, BUILD 10°/100'	6841.46	0.000	179.996	6754.04	176.96	-710.40	0.00	-177.01
LANDING POINT	7741.46	90.000	179.996	7327.00	-396.00	-710.36	10.00	395.95
TOTAL DEPTH	13077.60	90.000	179.996	7327.00	-5732.14	-710.00	0.00	5732.09

Targets

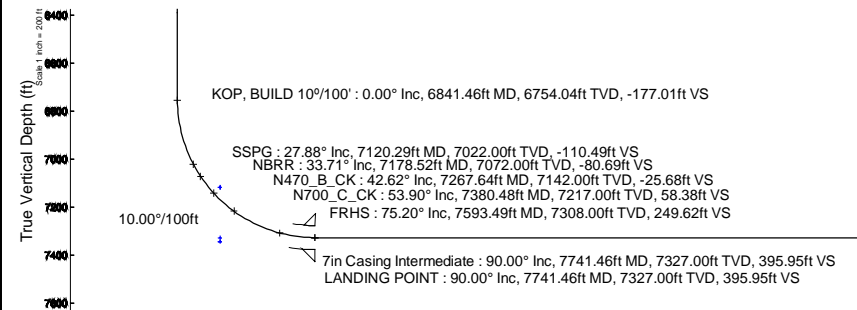
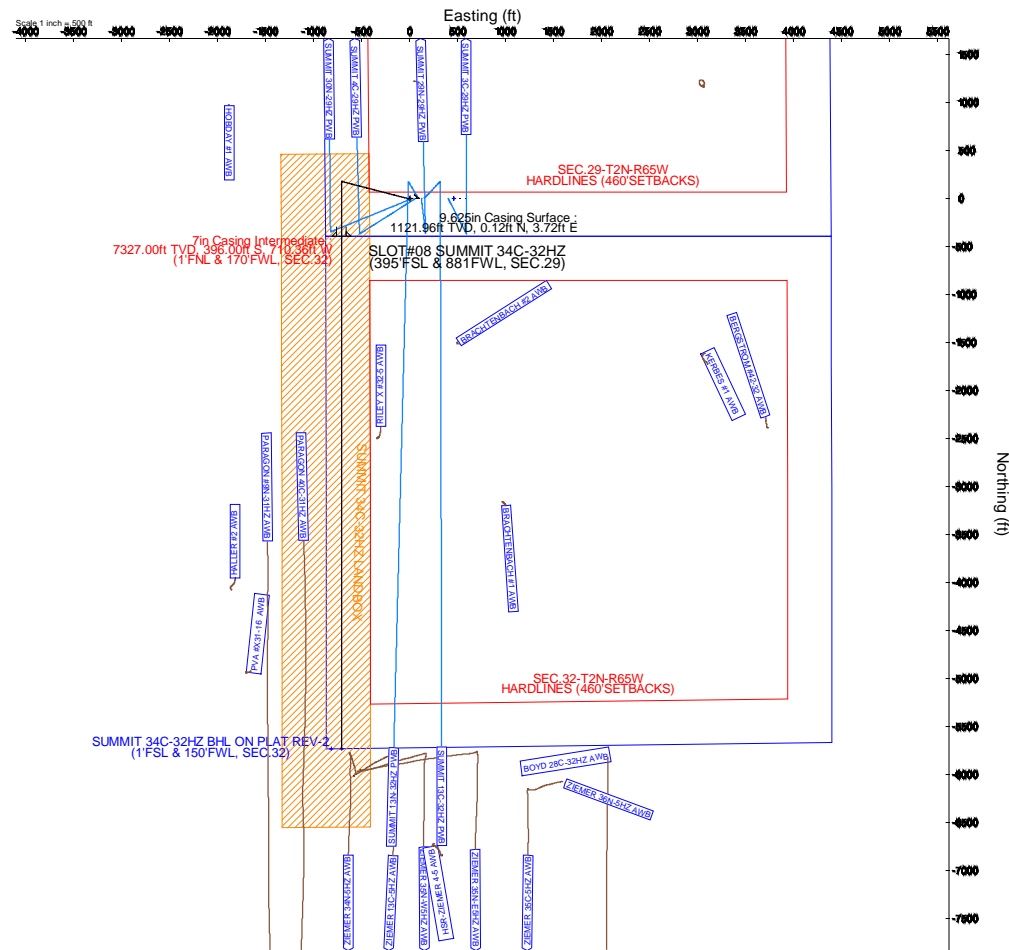
Name	MD (ft)	TVD (ft)	Local N (ft)	Local E (ft)	Grid East (US ft)	Grid North (US ft)	Latitude	Longitude
SEC.29-T2N-R65W SECTION LINES	7118.00	0.41	459.94	3225918.18	1281513.05	40°06'11.956"N	104°41'32.485"W	
SEC.32-T2N-R65W SECTION LINES	7118.00	0.41	459.94	3225918.18	1281513.05	40°06'11.956"N	104°41'32.485"W	
SUMMIT 34C-32HZ BHL ON PLAT REV-1 (1FSL & 59FWL, SEC.32)	7327.00	-5732.14	-816.72	3224893.73	1275769.39	40°05'15.309"N	104°41'48.912"W	
SUMMIT 34C-32HZ BHL ON PLAT REV-2 (1FSL & 150FWL, SEC.32)	13077.60	7327.00	-5732.14	-710.00	3224800.44	40°05'15.309"N	104°41'47.538"W	
SUMMIT 34C-32HZ LANDING POINT	7327.00	0.00	0.03	3225458.31	1281508.46	40°06'11.952"N	104°41'38.404"W	
SEC.29-T2N-R65W HARDLINES (460SETBACKS)	7343.00	0.00	0.03	3225458.31	1281508.46	40°06'11.952"N	104°41'38.404"W	
SEC.32-T2N-R65W HARDLINES (460SETBACKS)	7343.00	0.41	459.94	3225918.18	1281513.05	40°06'11.956"N	104°41'32.485"W	

Approval

Baker Hughes Representatives			
Prepared by	Signature	Reviewed by	Signature
Position	Date	Position	Date
KERR-MCGEE OIL & GAS ONSHORE LP Representative			
Approved by	Signature	Position	Date
Comment			



XTREME 6



SUMMIT 34C-32HZ BHL ON PLAT REV-2 (1FSL & 100FWL, SEC.32)
TOTAL DEPTH : 90.00° Inc, 13077.60ft MD, 7327.00ft TVD, 5732.09ft VS

Vertical Section (ft)
Azimuth 180.00° with reference 0.00 N, 0.00 E

Scale 1 inch = 200 ft

Planned Wellpath Report

SUMMIT 34C-32HZ PWP (REV-A.0)

Page 1 of 7

REFERENCE WELLPATH IDENTIFICATION

Operator	KERR-MCGEE OIL & GAS ONSHORE LP	Slot	SLOT#08 SUMMIT 34C-32HZ (395'FSL & 881FWL, SEC.29)
Area	COLORADO	Well	SUMMIT 34C-32HZ
Field	WELD COUNTY (KERR MCGEE)	Wellbore	SUMMIT 34C-32HZ PWB
Facility	SEC.29-T2N-R65W		

REPORT SETUP INFORMATION

Projection System	NAD83 / Lambert Colorado SP, Northern Zone (501), US feet	Software System	WellArchitect® 4.0.0
North Reference	True	User	Amarcar
Scale	0.99996	Report Generated	9/25/2014 at 9:00:17 AM
Convergence at slot	n/a	Database/Source file	WellArchitectDB/SUMMIT_34C-32HZ_PWB.xml

WELLPATH LOCATION

	Local coordinates		Grid coordinates		Geographic coordinates	
	North[ft]	East[ft]	Easting[US ft]	Northing[US ft]	Latitude	Longitude
Slot Location	-0.20	-459.94	3225458.28	1281508.46	40°06'11.952"N	104°41'38.404"W
Facility Reference Pt			3225918.18	1281512.85	40°06'11.954"N	104°41'32.485"W
Field Reference Pt			3197771.84	1268891.29	40°04'09.600"N	104°47'36.000"W

WELLPATH DATUM

Calculation method	Minimum curvature	XTREME 6 (16'KB) (RKB) to Facility Vertical Datum	4957.00ft
Horizontal Reference Pt	Slot	XTREME 6 (16'KB) (RKB) to Mean Sea Level	4957.00ft
Vertical Reference Pt	XTREME 6 (16'KB) (RKB)	XTREME 6 (16'KB) (RKB) to Mud Line at Slot (SLOT#08 SUMMIT 34C-32HZ (395'FSL & 881FWL, SEC.29))	4957.00ft
MD Reference Pt	XTREME 6 (16'KB) (RKB)	Section Origin	N 0.00, E 0.00 ft
Field Vertical Reference	Mean Sea Level	Section Azimuth	180.00°

Planned Wellpath Report

SUMMIT 34C-32HZ PWP (REV-A.0)

Page 2 of 7

REFERENCE WELLPATH IDENTIFICATION			
Operator	KERR-MCGEE OIL & GAS ONSHORE LP	Slot	SLOT#08 SUMMIT 34C-32HZ (395'FSL & 881FWL, SEC.29)
Area	COLORADO	Well	SUMMIT 34C-32HZ
Field	WELD COUNTY (KERR MCGEE)	Wellbore	SUMMIT 34C-32HZ PWB
Facility	SEC.29-T2N-R65W		

WELLPATH DATA (150 stations) † = interpolated/extrapolated station										
MD [ft]	Inclination [°]	Azimuth [°]	TVD [ft]	Vert Sect [ft]	North [ft]	East [ft]	Latitude	Longitude	DLS [°/100ft]	Comments
0.00†	0.000	162.300	0.00	0.00	0.00	0.00	40°06'11.952"N	104°41'38.404"W	0.00	
16.00	0.000	162.300	16.00	0.00	0.00	0.00	40°06'11.952"N	104°41'38.404"W	0.00	
59.00	0.400	162.300	59.00	0.14	-0.14	0.05	40°06'11.951"N	104°41'38.403"W	0.93	
128.00	0.200	151.900	128.00	0.48	-0.48	0.18	40°06'11.947"N	104°41'38.402"W	0.30	
226.00	0.300	345.700	226.00	0.38	-0.38	0.19	40°06'11.948"N	104°41'38.402"W	0.51	
325.00	0.100	356.600	325.00	0.04	-0.04	0.12	40°06'11.952"N	104°41'38.402"W	0.20	
405.00	0.400	26.000	405.00	-0.28	0.28	0.24	40°06'11.955"N	104°41'38.401"W	0.40	
485.00	0.400	19.400	484.99	-0.79	0.79	0.46	40°06'11.960"N	104°41'38.398"W	0.06	
565.00	0.700	45.900	564.99	-1.39	1.39	0.90	40°06'11.966"N	104°41'38.392"W	0.48	
645.00	0.400	46.200	644.99	-1.93	1.93	1.45	40°06'11.971"N	104°41'38.385"W	0.38	
725.00	0.400	65.500	724.99	-2.24	2.24	1.91	40°06'11.974"N	104°41'38.379"W	0.17	
805.00	0.500	33.600	804.98	-2.64	2.64	2.36	40°06'11.978"N	104°41'38.374"W	0.33	
885.00	0.400	142.800	884.98	-2.71	2.71	2.72	40°06'11.979"N	104°41'38.369"W	0.92	
965.00	0.800	139.000	964.98	-2.07	2.07	3.25	40°06'11.972"N	104°41'38.362"W	0.50	
975.02†	0.775	142.535	975.00	-1.96	1.96	3.34	40°06'11.971"N	104°41'38.361"W	0.55	FOX HILLS BASE
1045.00	0.700	172.000	1044.97	-1.16	1.16	3.69	40°06'11.963"N	104°41'38.357"W	0.55	
1084.00	0.800	179.800	1083.97	-0.65	0.65	3.72	40°06'11.958"N	104°41'38.356"W	0.37	TIE-INTO MWD SURVEY
1184.00†	0.800	179.800	1183.96	0.74	-0.74	3.73	40°06'11.945"N	104°41'38.356"W	0.00	
1284.00†	0.800	179.800	1283.95	2.14	-2.14	3.73	40°06'11.931"N	104°41'38.356"W	0.00	
1300.05	0.800	179.800	1300.00	2.36	-2.36	3.73	40°06'11.929"N	104°41'38.356"W	0.00	BEGIN NUDGE
1384.00†	1.627	259.435	1383.93	3.17	-3.17	2.56	40°06'11.921"N	104°41'38.371"W	2.00	
1484.00†	3.521	274.886	1483.83	3.17	-3.17	-1.89	40°06'11.921"N	104°41'38.428"W	2.00	
1584.00†	5.490	279.420	1583.51	2.12	-2.12	-9.67	40°06'11.931"N	104°41'38.528"W	2.00	
1684.00†	7.476	281.559	1682.87	0.03	-0.03	-20.77	40°06'11.952"N	104°41'38.671"W	2.00	
1784.00†	9.468	282.802	1781.77	-3.09	3.09	-35.16	40°06'11.983"N	104°41'38.856"W	2.00	
1884.00†	11.462	283.616	1880.10	-7.26	7.25	-52.84	40°06'12.024"N	104°41'39.084"W	2.00	
1984.00†	13.459	284.192	1977.74	-12.45	12.45	-73.78	40°06'12.075"N	104°41'39.353"W	2.00	
2051.17	14.800	284.493	2042.88	-16.52	16.51	-89.67	40°06'12.115"N	104°41'39.558"W	2.00	END NUDGE
2084.00†	14.800	284.493	2074.62	-18.62	18.61	-97.79	40°06'12.136"N	104°41'39.662"W	0.00	
2184.00†	14.800	284.493	2171.30	-25.01	25.00	-122.52	40°06'12.199"N	104°41'39.981"W	0.00	
2284.00†	14.800	284.493	2267.99	-31.41	31.39	-147.25	40°06'12.262"N	104°41'40.299"W	0.00	
2384.00†	14.800	284.493	2364.67	-37.80	37.79	-171.98	40°06'12.325"N	104°41'40.617"W	0.00	
2484.00†	14.800	284.493	2461.35	-44.19	44.18	-196.71	40°06'12.389"N	104°41'40.936"W	0.00	
2584.00†	14.800	284.493	2558.03	-50.59	50.57	-221.44	40°06'12.452"N	104°41'41.254"W	0.00	
2684.00†	14.800	284.493	2654.72	-56.98	56.97	-246.18	40°06'12.515"N	104°41'41.572"W	0.00	
2784.00†	14.800	284.493	2751.40	-63.38	63.36	-270.91	40°06'12.578"N	104°41'41.890"W	0.00	
2884.00†	14.800	284.493	2848.08	-69.77	69.75	-295.64	40°06'12.641"N	104°41'42.209"W	0.00	
2984.00†	14.800	284.493	2944.76	-76.17	76.14	-320.37	40°06'12.704"N	104°41'42.527"W	0.00	
3084.00†	14.800	284.493	3041.44	-82.56	82.54	-345.10	40°06'12.768"N	104°41'42.845"W	0.00	
3184.00†	14.800	284.493	3138.13	-88.95	88.93	-369.84	40°06'12.831"N	104°41'43.163"W	0.00	
3284.00†	14.800	284.493	3234.81	-95.35	95.32	-394.57	40°06'12.894"N	104°41'43.482"W	0.00	
3384.00†	14.800	284.493	3331.49	-101.74	101.71	-419.30	40°06'12.957"N	104°41'43.800"W	0.00	
3484.00†	14.800	284.493	3428.17	-108.14	108.11	-444.03	40°06'13.020"N	104°41'44.118"W	0.00	
3584.00†	14.800	284.493	3524.86	-114.53	114.50	-468.76	40°06'13.083"N	104°41'44.437"W	0.00	
3684.00†	14.800	284.493	3621.54	-120.93	120.89	-493.49	40°06'13.147"N	104°41'44.755"W	0.00	

Planned Wellpath Report

SUMMIT 34C-32HZ PWP (REV-A.0)

Page 3 of 7

REFERENCE WELLPATH IDENTIFICATION

Operator	KERR-MCGEE OIL & GAS ONSHORE LP	Slot	SLOT#08 SUMMIT 34C-32HZ (395'FSL & 881FWL, SEC.29)
Area	COLORADO	Well	SUMMIT 34C-32HZ
Field	WELD COUNTY (KERR MCGEE)	Wellbore	SUMMIT 34C-32HZ PWB
Facility	SEC.29-T2N-R65W		

WELLPATH DATA (150 stations) † = interpolated/extrapolated station

MD [ft]	Inclination [°]	Azimuth [°]	TVD [ft]	Vert Sect [ft]	North [ft]	East [ft]	Latitude	Longitude	DLS [°/100ft]	Comments
3784.00†	14.800	284.493	3718.22	-127.32	127.28	-518.23	40°06'13.210"N	104°41'45.073"W	0.00	
3884.00†	14.800	284.493	3814.90	-133.72	133.68	-542.96	40°06'13.273"N	104°41'45.391"W	0.00	
3984.00†	14.800	284.493	3911.59	-140.11	140.07	-567.69	40°06'13.336"N	104°41'45.710"W	0.00	
4084.00†	14.800	284.493	4008.27	-146.50	146.46	-592.42	40°06'13.399"N	104°41'46.028"W	0.00	
4184.00†	14.800	284.493	4104.95	-152.90	152.86	-617.15	40°06'13.462"N	104°41'46.346"W	0.00	
4188.97	14.800	284.493	4109.76	-153.22	153.17	-618.38	40°06'13.466"N	104°41'46.362"W	0.00	BEGIN DROP
4210.92†	14.361	284.493	4131.00	-154.60	154.56	-623.73	40°06'13.479"N	104°41'46.431"W	2.00	PARKMAN
4284.00†	12.899	284.493	4202.02	-158.91	158.87	-640.40	40°06'13.522"N	104°41'46.645"W	2.00	
4384.00†	10.899	284.493	4299.86	-164.07	164.03	-660.37	40°06'13.573"N	104°41'46.902"W	2.00	
4484.00†	8.899	284.493	4398.37	-168.37	168.33	-677.01	40°06'13.615"N	104°41'47.117"W	2.00	
4570.48†	7.170	284.493	4484.00	-171.40	171.35	-688.71	40°06'13.645"N	104°41'47.267"W	2.00	SUSSEX
4584.00†	6.899	284.493	4497.42	-171.82	171.77	-690.32	40°06'13.649"N	104°41'47.288"W	2.00	
4684.00†	4.899	284.493	4596.88	-174.39	174.34	-700.27	40°06'13.675"N	104°41'47.416"W	2.00	
4784.00†	2.899	284.493	4696.65	-176.09	176.04	-706.85	40°06'13.692"N	104°41'47.501"W	2.00	
4884.00†	0.899	284.493	4796.59	-176.92	176.87	-710.06	40°06'13.700"N	104°41'47.542"W	2.00	
4928.97	0.000	179.996	4841.56	-177.01	176.96	-710.40	40°06'13.701"N	104°41'47.546"W	2.00	END DROP
4984.00†	0.000	179.996	4896.58	-177.01	176.96	-710.40	40°06'13.701"N	104°41'47.546"W	0.00	
5084.00†	0.000	179.996	4996.58	-177.01	176.96	-710.40	40°06'13.701"N	104°41'47.546"W	0.00	
5184.00†	0.000	179.996	5096.58	-177.01	176.96	-710.40	40°06'13.701"N	104°41'47.546"W	0.00	
5284.00†	0.000	179.996	5196.58	-177.01	176.96	-710.40	40°06'13.701"N	104°41'47.546"W	0.00	
5384.00†	0.000	179.996	5296.58	-177.01	176.96	-710.40	40°06'13.701"N	104°41'47.546"W	0.00	
5484.00†	0.000	179.996	5396.58	-177.01	176.96	-710.40	40°06'13.701"N	104°41'47.546"W	0.00	
5584.00†	0.000	179.996	5496.58	-177.01	176.96	-710.40	40°06'13.701"N	104°41'47.546"W	0.00	
5684.00†	0.000	179.996	5596.58	-177.01	176.96	-710.40	40°06'13.701"N	104°41'47.546"W	0.00	
5784.00†	0.000	179.996	5696.58	-177.01	176.96	-710.40	40°06'13.701"N	104°41'47.546"W	0.00	
5884.00†	0.000	179.996	5796.58	-177.01	176.96	-710.40	40°06'13.701"N	104°41'47.546"W	0.00	
5984.00†	0.000	179.996	5896.58	-177.01	176.96	-710.40	40°06'13.701"N	104°41'47.546"W	0.00	
6084.00†	0.000	179.996	5996.58	-177.01	176.96	-710.40	40°06'13.701"N	104°41'47.546"W	0.00	
6184.00†	0.000	179.996	6096.58	-177.01	176.96	-710.40	40°06'13.701"N	104°41'47.546"W	0.00	
6284.00†	0.000	179.996	6196.58	-177.01	176.96	-710.40	40°06'13.701"N	104°41'47.546"W	0.00	
6384.00†	0.000	179.996	6296.58	-177.01	176.96	-710.40	40°06'13.701"N	104°41'47.546"W	0.00	
6484.00†	0.000	179.996	6396.58	-177.01	176.96	-710.40	40°06'13.701"N	104°41'47.546"W	0.00	
6584.00†	0.000	179.996	6496.58	-177.01	176.96	-710.40	40°06'13.701"N	104°41'47.546"W	0.00	
6684.00†	0.000	179.996	6596.58	-177.01	176.96	-710.40	40°06'13.701"N	104°41'47.546"W	0.00	
6784.00†	0.000	179.996	6696.58	-177.01	176.96	-710.40	40°06'13.701"N	104°41'47.546"W	0.00	
6841.46	0.000	179.996	6754.04	-177.01	176.96	-710.40	40°06'13.701"N	104°41'47.546"W	0.00	KOP, BUILD 10°/100'
6884.00†	4.254	179.996	6796.54	-175.43	175.38	-710.40	40°06'13.685"N	104°41'47.546"W	10.00	
6984.00†	14.254	179.996	6895.12	-159.37	159.32	-710.40	40°06'13.526"N	104°41'47.546"W	10.00	
7084.00†	24.254	179.996	6989.40	-126.43	126.38	-710.40	40°06'13.201"N	104°41'47.546"W	10.00	
7120.29†	27.883	179.996	7022.00	-110.49	110.44	-710.40	40°06'13.043"N	104°41'47.546"W	10.00	SSPG
7178.52†	33.707	179.996	7072.00	-80.69	80.64	-710.40	40°06'12.749"N	104°41'47.546"W	10.00	NBRR
7184.00†	34.254	179.996	7076.54	-77.63	77.58	-710.40	40°06'12.719"N	104°41'47.546"W	10.00	
7267.64†	42.619	179.996	7142.00	-25.68	25.63	-710.39	40°06'12.205"N	104°41'47.546"W	10.00	N470_B_CK
7284.00†	44.254	179.996	7153.88	-14.43	14.38	-710.39	40°06'12.094"N	104°41'47.546"W	10.00	
7380.48†	53.902	179.996	7217.00	58.38	-58.43	-710.39	40°06'11.374"N	104°41'47.546"W	10.00	N700_C_CK

Planned Wellpath Report

SUMMIT 34C-32HZ PWP (REV-A.0)

Page 4 of 7

REFERENCE WELLPATH IDENTIFICATION

Operator	KERR-MCGEE OIL & GAS ONSHORE LP	Slot	SLOT#08 SUMMIT 34C-32HZ (395'FSL & 881FWL, SEC.29)
Area	COLORADO	Well	SUMMIT 34C-32HZ
Field	WELD COUNTY (KERR MCGEE)	Wellbore	SUMMIT 34C-32HZ PWB
Facility	SEC.29-T2N-R65W		

WELLPATH DATA (150 stations) † = interpolated/extrapolated station

MD [ft]	Inclination [°]	Azimuth [°]	TVD [ft]	Vert Sect [ft]	North [ft]	East [ft]	Latitude	Longitude	DLS [°/100ft]	Comments
7384.00†	54.254	179.996	7219.06	61.23	-61.28	-710.39	40°06'11.346"N	104°41'47.546"W	10.00	
7484.00†	64.254	179.996	7270.12	147.07	-147.12	-710.38	40°06'10.498"N	104°41'47.546"W	10.00	
7584.00†	74.254	179.996	7305.50	240.47	-240.52	-710.37	40°06'09.575"N	104°41'47.546"W	10.00	
7593.49†	75.203	179.996	7308.00	249.62	-249.67	-710.37	40°06'09.485"N	104°41'47.546"W	10.00	FRHS
7684.00†	84.254	179.996	7324.12	338.59	-338.64	-710.37	40°06'08.605"N	104°41'47.546"W	10.00	
7741.46	90.000	179.996	7327.00	395.95	-396.00	-710.36	40°06'08.039"N	104°41'47.546"W	10.00	LANDING POINT
7784.00†	90.000	179.996	7327.00	438.49	-438.54	-710.36	40°06'07.618"N	104°41'47.546"W	0.00	
7884.00†	90.000	179.996	7327.00	538.49	-538.54	-710.35	40°06'06.630"N	104°41'47.545"W	0.00	
7984.00†	90.000	179.996	7327.00	638.49	-638.54	-710.35	40°06'05.642"N	104°41'47.545"W	0.00	
8084.00†	90.000	179.996	7327.00	738.49	-738.54	-710.34	40°06'04.654"N	104°41'47.545"W	0.00	
8184.00†	90.000	179.996	7327.00	838.49	-838.54	-710.33	40°06'03.665"N	104°41'47.545"W	0.00	
8284.00†	90.000	179.996	7327.00	938.49	-938.54	-710.33	40°06'02.677"N	104°41'47.545"W	0.00	
8384.00†	90.000	179.996	7327.00	1038.49	-1038.54	-710.32	40°06'01.689"N	104°41'47.545"W	0.00	
8484.00†	90.000	179.996	7327.00	1138.49	-1138.54	-710.31	40°06'00.701"N	104°41'47.545"W	0.00	
8584.00†	90.000	179.996	7327.00	1238.49	-1238.54	-710.31	40°05'59.712"N	104°41'47.545"W	0.00	
8684.00†	90.000	179.996	7327.00	1338.49	-1338.54	-710.30	40°05'58.724"N	104°41'47.544"W	0.00	
8784.00†	90.000	179.996	7327.00	1438.49	-1438.54	-710.29	40°05'57.736"N	104°41'47.544"W	0.00	
8884.00†	90.000	179.996	7327.00	1538.49	-1538.54	-710.29	40°05'56.748"N	104°41'47.544"W	0.00	
8984.00†	90.000	179.996	7327.00	1638.49	-1638.54	-710.28	40°05'55.760"N	104°41'47.544"W	0.00	
9084.00†	90.000	179.996	7327.00	1738.49	-1738.54	-710.27	40°05'54.771"N	104°41'47.544"W	0.00	
9184.00†	90.000	179.996	7327.00	1838.49	-1838.54	-710.27	40°05'53.783"N	104°41'47.544"W	0.00	
9284.00†	90.000	179.996	7327.00	1938.49	-1938.54	-710.26	40°05'52.795"N	104°41'47.544"W	0.00	
9384.00†	90.000	179.996	7327.00	2038.49	-2038.54	-710.25	40°05'51.807"N	104°41'47.544"W	0.00	
9484.00†	90.000	179.996	7327.00	2138.49	-2138.54	-710.24	40°05'50.819"N	104°41'47.543"W	0.00	
9584.00†	90.000	179.996	7327.00	2238.49	-2238.54	-710.24	40°05'49.830"N	104°41'47.543"W	0.00	
9684.00†	90.000	179.996	7327.00	2338.49	-2338.54	-710.23	40°05'48.842"N	104°41'47.543"W	0.00	
9784.00†	90.000	179.996	7327.00	2438.49	-2438.54	-710.22	40°05'47.854"N	104°41'47.543"W	0.00	
9884.00†	90.000	179.996	7327.00	2538.49	-2538.54	-710.22	40°05'46.866"N	104°41'47.543"W	0.00	
9984.00†	90.000	179.996	7327.00	2638.49	-2638.54	-710.21	40°05'45.877"N	104°41'47.543"W	0.00	
10084.00†	90.000	179.996	7327.00	2738.49	-2738.54	-710.20	40°05'44.889"N	104°41'47.543"W	0.00	
10184.00†	90.000	179.996	7327.00	2838.49	-2838.54	-710.20	40°05'43.901"N	104°41'47.543"W	0.00	
10284.00†	90.000	179.996	7327.00	2938.49	-2938.54	-710.19	40°05'42.913"N	104°41'47.542"W	0.00	
10384.00†	90.000	179.996	7327.00	3038.49	-3038.54	-710.18	40°05'41.925"N	104°41'47.542"W	0.00	
10484.00†	90.000	179.996	7327.00	3138.49	-3138.54	-710.18	40°05'40.936"N	104°41'47.542"W	0.00	
10584.00†	90.000	179.996	7327.00	3238.49	-3238.54	-710.17	40°05'39.948"N	104°41'47.542"W	0.00	
10684.00†	90.000	179.996	7327.00	3338.49	-3338.54	-710.16	40°05'38.960"N	104°41'47.542"W	0.00	
10784.00†	90.000	179.996	7327.00	3438.49	-3438.54	-710.16	40°05'37.972"N	104°41'47.542"W	0.00	
10884.00†	90.000	179.996	7327.00	3538.49	-3538.54	-710.15	40°05'36.984"N	104°41'47.542"W	0.00	
10984.00†	90.000	179.996	7327.00	3638.49	-3638.54	-710.14	40°05'35.995"N	104°41'47.542"W	0.00	
11084.00†	90.000	179.996	7327.00	3738.49	-3738.54	-710.14	40°05'35.007"N	104°41'47.541"W	0.00	
11184.00†	90.000	179.996	7327.00	3838.49	-3838.54	-710.13	40°05'34.019"N	104°41'47.541"W	0.00	
11284.00†	90.000	179.996	7327.00	3938.49	-3938.54	-710.12	40°05'33.031"N	104°41'47.541"W	0.00	
11384.00†	90.000	179.996	7327.00	4038.49	-4038.54	-710.12	40°05'32.042"N	104°41'47.541"W	0.00	
11484.00†	90.000	179.996	7327.00	4138.49	-4138.54	-710.11	40°05'31.054"N	104°41'47.541"W	0.00	
11584.00†	90.000	179.996	7327.00	4238.49	-4238.54	-710.10	40°05'30.066"N	104°41'47.541"W	0.00	

Planned Wellpath Report

SUMMIT 34C-32HZ PWP (REV-A.0)

Page 5 of 7

REFERENCE WELLPATH IDENTIFICATION

Operator	KERR-MCGEE OIL & GAS ONSHORE LP	Slot	SLOT#08 SUMMIT 34C-32HZ (395'FSL & 881FWL, SEC.29)
Area	COLORADO	Well	SUMMIT 34C-32HZ
Field	WELD COUNTY (KERR MCGEE)	Wellbore	SUMMIT 34C-32HZ PWB
Facility	SEC.29-T2N-R65W		

WELLPATH DATA (150 stations) † = interpolated/extrapolated station

MD [ft]	Inclination [°]	Azimuth [°]	TVD [ft]	Vert Sect [ft]	North [ft]	East [ft]	Latitude	Longitude	DLS [°/100ft]	Comments
11684.00†	90.000	179.996	7327.00	4338.49	-4338.54	-710.09	40°05'29.078"N	104°41'47.541"W	0.00	
11784.00†	90.000	179.996	7327.00	4438.49	-4438.54	-710.09	40°05'28.090"N	104°41'47.541"W	0.00	
11884.00†	90.000	179.996	7327.00	4538.49	-4538.54	-710.08	40°05'27.101"N	104°41'47.540"W	0.00	
11984.00†	90.000	179.996	7327.00	4638.49	-4638.54	-710.07	40°05'26.113"N	104°41'47.540"W	0.00	
12084.00†	90.000	179.996	7327.00	4738.49	-4738.54	-710.07	40°05'25.125"N	104°41'47.540"W	0.00	
12184.00†	90.000	179.996	7327.00	4838.49	-4838.54	-710.06	40°05'24.137"N	104°41'47.540"W	0.00	
12284.00†	90.000	179.996	7327.00	4938.49	-4938.54	-710.05	40°05'23.148"N	104°41'47.540"W	0.00	
12384.00†	90.000	179.996	7327.00	5038.49	-5038.54	-710.05	40°05'22.160"N	104°41'47.540"W	0.00	
12484.00†	90.000	179.996	7327.00	5138.49	-5138.54	-710.04	40°05'21.172"N	104°41'47.540"W	0.00	
12584.00†	90.000	179.996	7327.00	5238.49	-5238.54	-710.03	40°05'20.184"N	104°41'47.540"W	0.00	
12684.00†	90.000	179.996	7327.00	5338.49	-5338.54	-710.03	40°05'19.196"N	104°41'47.539"W	0.00	
12784.00†	90.000	179.996	7327.00	5438.49	-5438.54	-710.02	40°05'18.207"N	104°41'47.539"W	0.00	
12884.00†	90.000	179.996	7327.00	5538.49	-5538.54	-710.01	40°05'17.219"N	104°41'47.539"W	0.00	
12984.00†	90.000	179.996	7327.00	5638.49	-5638.54	-710.01	40°05'16.231"N	104°41'47.539"W	0.00	
13077.60	90.000	179.996	7327.00 ¹	5732.09	-5732.14	-710.00	40°05'15.306"N	104°41'47.539"W	0.00	TOTAL DEPTH

HOLE & CASING SECTIONS - Ref Wellbore: SUMMIT 34C-32HZ PWB Ref Wellpath: SUMMIT 34C-32HZ PWP (REV-A.0)

String/Diameter	Start MD [ft]	End MD [ft]	Interval [ft]	Start TVD [ft]	End TVD [ft]	Start N/S [ft]	Start E/W [ft]	End N/S [ft]	End E/W [ft]
13.5in Open Hole	16.00	1132.00	1116.00	16.00	1131.96	0.00	0.00	-0.02	3.72
9.625in Casing Surface	16.00	1122.00	1106.00	16.00	1121.96	0.00	0.00	0.12	3.72
8.75in Open Hole	1132.00	7741.46	6609.46	1131.96	7327.00	-0.02	3.72	-396.00	-710.36
7in Casing Intermediate	16.00	7741.46	7725.46	16.00	7327.00	0.00	0.00	-396.00	-710.36
6.125in Open Hole	7741.46	13077.60	5336.14	7327.00	7327.00	-396.00	-710.36	-5732.14	-710.00
4.125in Casing Production	16.00	13077.60	13061.60	16.00	7327.00	0.00	0.00	-5732.14	-710.00

Planned Wellpath Report

SUMMIT 34C-32HZ PWP (REV-A.0)

Page 6 of 7

REFERENCE WELLPATH IDENTIFICATION

Operator	KERR-MCGEE OIL & GAS ONSHORE LP	Slot	SLOT#08 SUMMIT 34C-32HZ (395'FSL & 881FWL, SEC.29)
Area	COLORADO	Well	SUMMIT 34C-32HZ
Field	WELD COUNTY (KERR MCGEE)	Wellbore	SUMMIT 34C-32HZ PWB
Facility	SEC.29-T2N-R65W		

TARGETS

Name	MD [ft]	TVD [ft]	North [ft]	East [ft]	Grid East [US ft]	Grid North [US ft]	Latitude	Longitude	Shape
SEC.29-T2N-R65W SECTION LINES		7118.00	0.41	459.94	3225918.18	1281513.05	40°06'11.956"N	104°41'32.485"W	polygon
SEC.32-T2N-R65W SECTION LINES		7118.00	0.41	459.94	3225918.18	1281513.05	40°06'11.956"N	104°41'32.485"W	polygon
SUMMIT 34C-32HZ BHL ON PLAT REV-1 (1'FSL & 50'FWL, SEC.32)		7327.00	-5732.14	-816.72	3224693.73	1275769.38	40°05'15.306"N	104°41'48.912"W	point
1) SUMMIT 34C-32HZ BHL ON PLAT REV-2 (1'FSL & 150'FWL, SEC.32)	13077.60	7327.00	-5732.14	-710.00	3224800.44	1275770.35	40°05'15.306"N	104°41'47.539"W	point
SUMMIT 34C-32HZ LANDBOX		7327.00	0.00	0.03	3225458.31	1281508.46	40°06'11.952"N	104°41'38.404"W	polygon
SEC.29-T2N-R65W HARDLINES (460'SETBACKS)		7343.00	0.00	0.03	3225458.31	1281508.46	40°06'11.952"N	104°41'38.404"W	polygon
SEC.32-T2N-R65W HARDLINES (460'SETBACKS)		7343.00	0.41	459.94	3225918.18	1281513.05	40°06'11.956"N	104°41'32.485"W	polygon

SURVEY PROGRAM - Ref Wellbore: SUMMIT 34C-32HZ PWB Ref Wellpath: SUMMIT 34C-32HZ PWP (REV-A.0)

Start MD [ft]	End MD [ft]	Positional Uncertainty Model	Log Name/Comment	Wellbore
16.00	1084.00	ISCWSA MWD, Rev. 2 (Standard)		SUMMIT 34C-32HZ AWB
1084.00	7741.46	NaviTrak (MAGCORR,IFR)		SUMMIT 34C-32HZ PWB
7741.46	13077.60	NaviTrak (MAGCORR,IFR)		SUMMIT 34C-32HZ PWB

Planned Wellpath Report

SUMMIT 34C-32HZ PWP (REV-A.0)

Page 7 of 7

REFERENCE WELLPATH IDENTIFICATION

Operator	KERR-MCGEE OIL & GAS ONSHORE LP	Slot	SLOT#08 SUMMIT 34C-32HZ (395'FSL & 881FWL, SEC.29)
Area	COLORADO	Well	SUMMIT 34C-32HZ
Field	WELD COUNTY (KERR MCGEE)	Wellbore	SUMMIT 34C-32HZ PWB
Facility	SEC.29-T2N-R65W		

WELLPATH COMMENTS

MD [ft]	Inclination [°]	Azimuth [°]	TVD [ft]	Comment
975.02	0.775	142.535	975.00	FOX HILLS BASE
4210.92	14.361	284.493	4131.00	PARKMAN
4570.48	7.170	284.493	4484.00	SUSSEX
7120.29	27.883	179.996	7022.00	SSPG
7178.52	33.707	179.996	7072.00	NBRR
7267.64	42.619	179.996	7142.00	N470_B_CK
7380.48	53.902	179.996	7217.00	N700_C_CK
7593.49	75.203	179.996	7308.00	FRHS

DESIGN COMMENTS

MD [ft]	Inclination [°]	Azimuth [°]	TVD [ft]	Comment
1084.00	0.800	179.800	1083.97	TIE-INTO MWD SURVEY
1300.05	0.800	179.800	1300.00	BEGIN NUDGE
2051.17	14.800	284.493	2042.88	END NUDGE
4188.97	14.800	284.493	4109.76	BEGIN DROP
4928.97	0.000	179.996	4841.56	END DROP
6841.46	0.000	179.996	6754.04	KOP, BUILD 10°/100'
7741.46	90.000	179.996	7327.00	LANDING POINT
13077.60	90.000	179.996	7327.00	TOTAL DEPTH