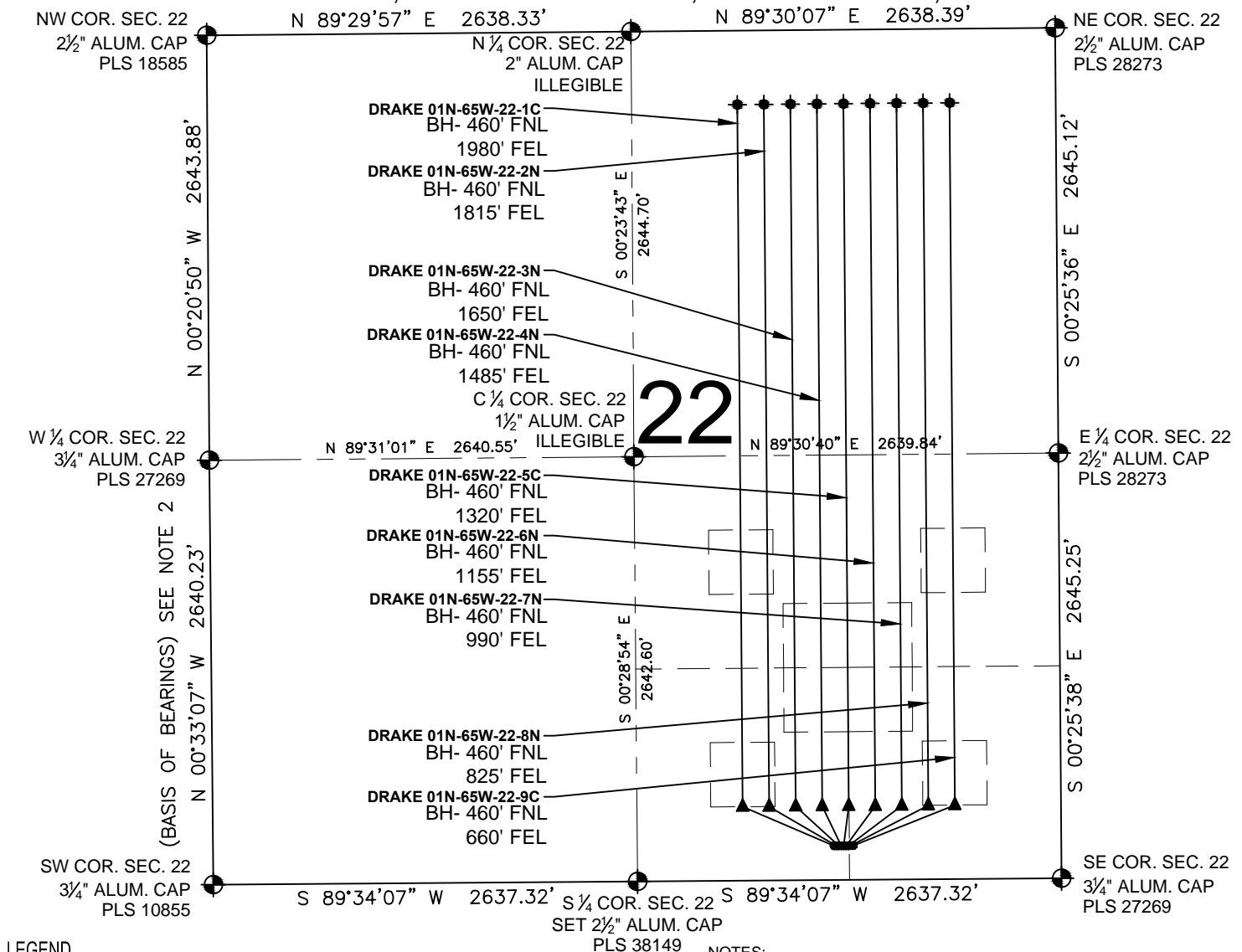


DRAKE 01N-65W-22 PAD MULTI-WELL PLAN

SECTION 22, TOWNSHIP 1 NORTH, RANGE 65 WEST, 6TH P.M.



LEGEND

- = EXISTING MONUMENT
- = CALCULATED POINT
- = PROPOSED WELL
- ▲ = ENTRY POINT
- ◆ = EXISTING WELL
- LP = ENTRY POINT
- ◆ = BOTTOM HOLE
- BH = BOTTOM HOLE

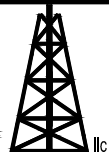
NOTES:

- THIS FIELD SURVEY CONFORMS TO THE MINIMUM STANDARDS SET BY THE C.O.G.C.C., RULE NO. 215
- BEARINGS ARE BASED UPON THE WEST LINE OF THE SOUTHWEST QUARTER OF SECTION 22, TOWNSHIP 1 NORTH, RANGE 65 WEST OF THE 6TH P.M., COUNTY OF WELD, STATE OF COLORADO AS BEARING N00°33'07"W BETWEEN THE MONUMENTS SHOWN HEREON.
- GRID DISTANCES ARE SHOWN, AS GPS MEASURED IN THE FIELD, WITH TIES TO WELLS MEASURED PERPENDICULAR TO SECTION LINES. TO GET GROUND DISTANCES MULTIPLY THE SHOWN DISTANCE BY 1.0002770914.

PREPARED BY:

PFS

Petroleum Field Services, LLC
7535 Hilltop Circle
Denver, CO 80229



VERDAD OIL & GAS CORPORATION

FIELD DATE: 08-20-14	PAD NAME: DRAKE 01N-65W-22
DRAWING DATE: 08-28-14	SURFACE LOCATION: SW 1/4 SE 1/4, SEC. 22, T1N, R65W, 6TH P.M. SE 1/4 SE 1/4, SEC. 22, T1N, R65W, 6TH P.M. WELD COUNTY, COLORADO
BY: SMF	CHECKED: JAH

