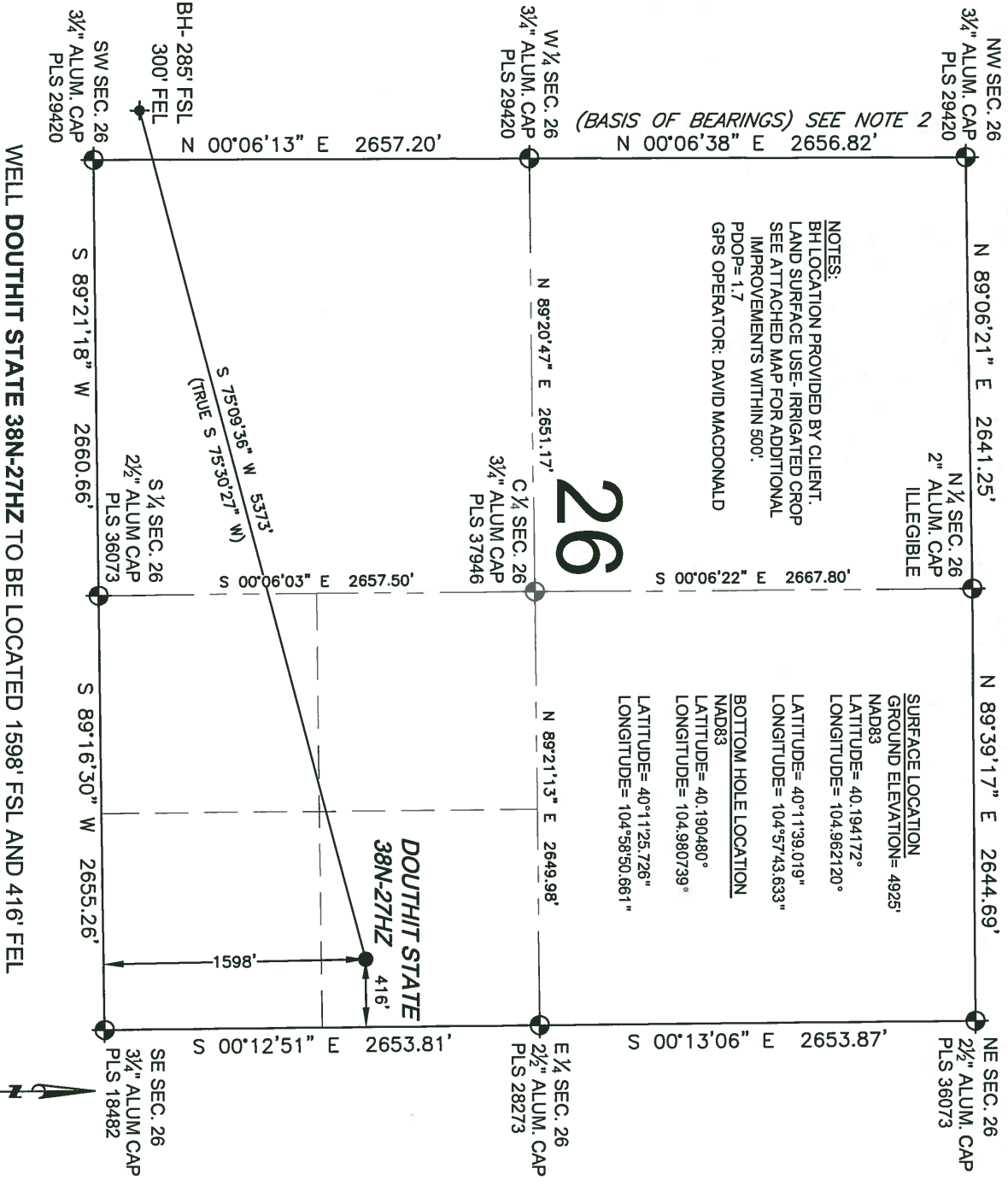


WELL LOCATION CERTIFICATE: DOUTHIT STATE 38N-27HZ

SECTION 26, TOWNSHIP 3 NORTH, RANGE 68 WEST, 6TH P.M.



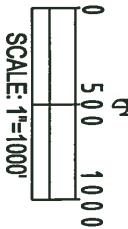
(BASIS OF BEARINGS) SEE NOTE 2

26

NOTES:
 BH LOCATION PROVIDED BY CLIENT.
 LAND SURFACE USE - IRRIGATED CROP
 SEE ATTACHED MAP FOR ADDITIONAL
 IMPROVEMENTS WITHIN 500'.
 PDOP= 1.7
 GPS OPERATOR: DAVID MACDONALD

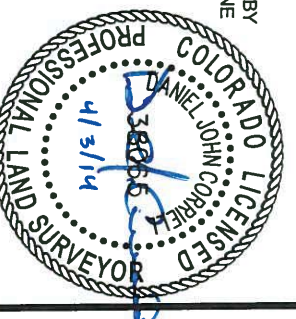
SURFACE LOCATION
 GROUND ELEVATION= 4925'
 NAD83
 LATITUDE= 40.194172°
 LONGITUDE= 104.962120°
 LATITUDE= 40°1'39.019"
 LONGITUDE= 104°57'43.633"
BOTTOM HOLE LOCATION
 NAD83
 LATITUDE= 40.190480°
 LONGITUDE= 104.980739°
 LATITUDE= 40°11'25.726"
 LONGITUDE= 104°58'50.661"

WELL DOUTHIT STATE 38N-27HZ TO BE LOCATED 1598' FSL AND 416' FEL



- NOTES:
1. THIS FIELD SURVEY CONFORMS TO THE MINIMUM STANDARDS SET BY THE C.O.G.C.C., RULE NO. 215
 2. BEARINGS AND DISTANCE SHOWN HEREON ARE GRID AND BASED ON THE COLORADO STATE PLANE COORDINATE SYSTEM, NAD 83/2011 BETWEEN MONUMENTS AS LABELED HEREON AND ELEVATIONS SHOWN ARE NAVD 88, AS DERIVED BY GPS OBSERVATIONS.
 3. GRID DISTANCES ARE SHOWN, AS MEASURED IN THE FIELD, WITH TIES TO WELLS MEASURED PERPENDICULAR TO SECTION LINES.

DANIEL JOHN CORRIELL, PLS 38065
 COLORADO LICENSED PROFESSIONAL LAND SURVEYOR
 FOR AND ON BEHALF OF P.F.S., LLC



PREPARED BY: PFS PROFESSIONAL FIELD SURVEYING, LLC
 1801 W. 73rd Ave
 Denver, CO 80204

FIELD DATE: 11-20-13
 SURFACE LOCATION: NE 1/4, SE 1/4,
 SHEET 1 OF 2

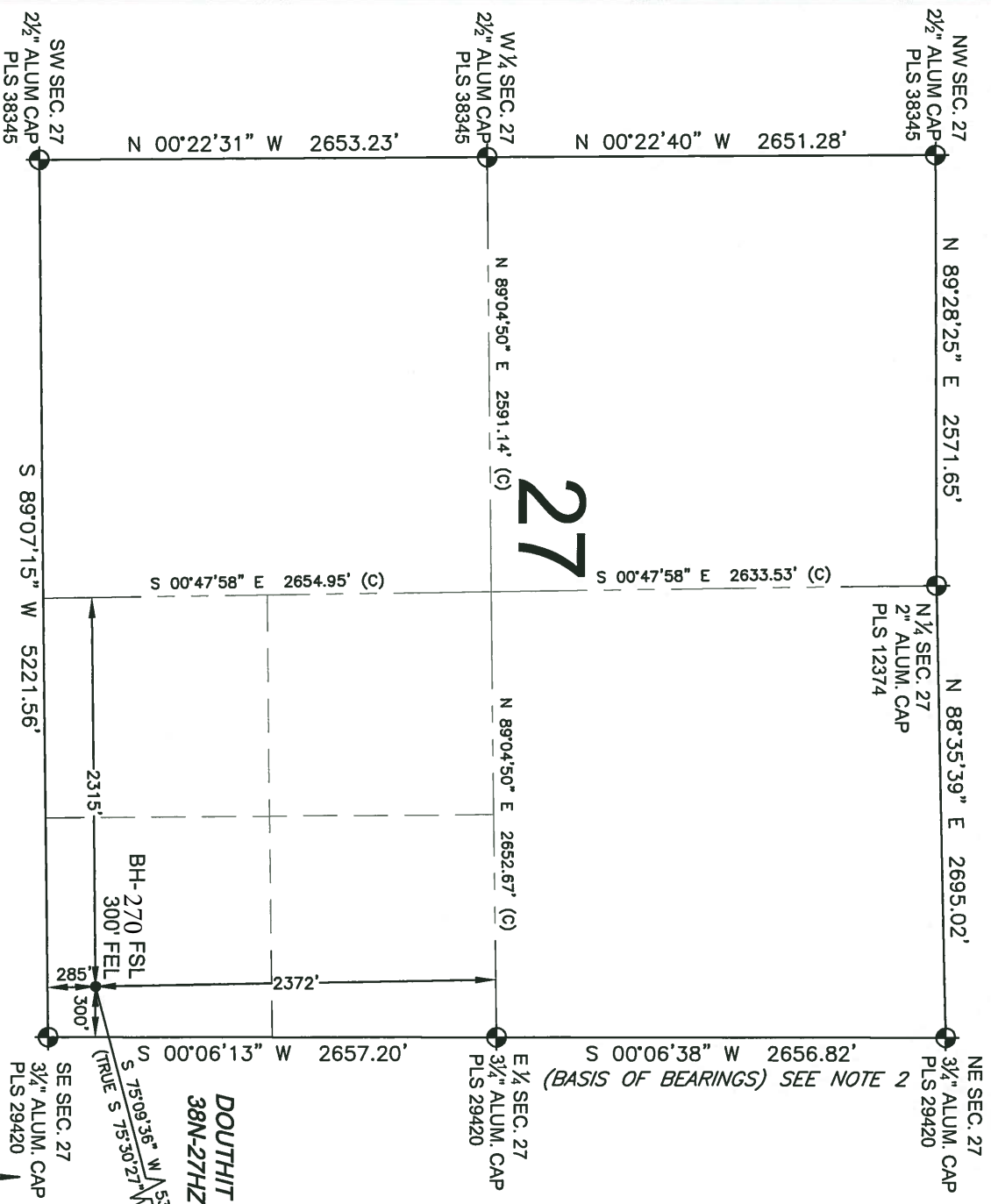
DRAWING DATE: 03-31-14
 SEC. 26, T3N, R68W, 6TH P.M.,
 WELD COUNTY, COLORADO

BY: DRF
 CHECKED: SMG

NOTICE: ACCORDING TO COLORADO LAW YOU MUST COMMENCE ANY LEGAL ACTION BASED UPON ANY DEFECT IN THIS SURVEY WITHIN THREE YEARS AFTER YOU FIRST DISCOVER SUCH DEFECT. IN NO EVENT MAY ANY ACTION BASED UPON ANY DEFECT IN THIS SURVEY BE COMMENCED MORE THAN TEN YEARS FROM THIS SAID DATE OF THIS CERTIFICATION SHOWN HEREON.

WELL LOCATION CERTIFICATE: DOUTHIT STATE 38N-27HZ

SECTION 27, TOWNSHIP 3 NORTH, RANGE 68 WEST, 6TH P.M.



- LEGEND**
- ◉ = EXISTING MONUMENT
 - ◉ = PROPOSED WELL
 - BH = BOTTOM HOLE
 - ◆ = BOTTOM HOLE
 - ◆ = EXISTING WELL

- NOTES:**
1. THIS FIELD SURVEY CONFORMS TO THE MINIMUM STANDARDS SET BY THE C.O.G.C.C., RULE NO. 215
 2. BEARINGS AND DISTANCE SHOWN HEREON ARE GRID AND BASED ON THE COLORADO STATE PLANE COORDINATE SYSTEM, NAD 83/2011 BETWEEN MONUMENTS AS LABELED HEREON AND ELEVATIONS SHOWN ARE NAVD 88, AS DERIVED BY GPS OBSERVATIONS.
 3. GRID DISTANCES ARE SHOWN, AS MEASURED IN THE FIELD, WITH TIES TO WELLS MEASURED PERPENDICULAR TO SECTION LINES.

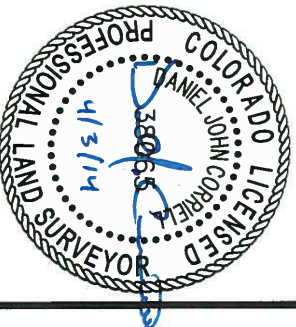


DOUTHIT STATE
38N-27HZ

PREPARED BY:	FIELD DATE:	SURFACE LOCATION:
PFS Professional Field Services, LLC 1801 W. 13th Ave. Denver, CO 80202	11-20-13	NE 1/4, SE 1/4,
BY:	DRAWING DATE:	SEC. 26, T3N, R68W, 6TH P.M.
DRF	03-31-14	WELD COUNTY, COLORADO
SMG	CHECKED:	

SHEET 2 OF 2

DANIEL JOHN CORRIELL, PLS 38066
COLORADO LICENSED PROFESSIONAL LAND SURVEYOR
FOR AND ON BEHALF OF P.F.S., LLC



NOTICE: ACCORDING TO COLORADO LAW YOU MUST COMMENCE ANY LEGAL ACTION BASED UPON ANY DEFECT IN THIS SURVEY WITHIN THREE YEARS AFTER YOU FIRST DISCOVER SUCH DEFECT. IN NO EVENT MAY ANY ACTION BASED UPON ANY DEFECT IN THIS SURVEY BE COMMENCED MORE THAN TEN YEARS FROM THIS SAID DATE OF THIS CERTIFICATION SHOWN HEREON.