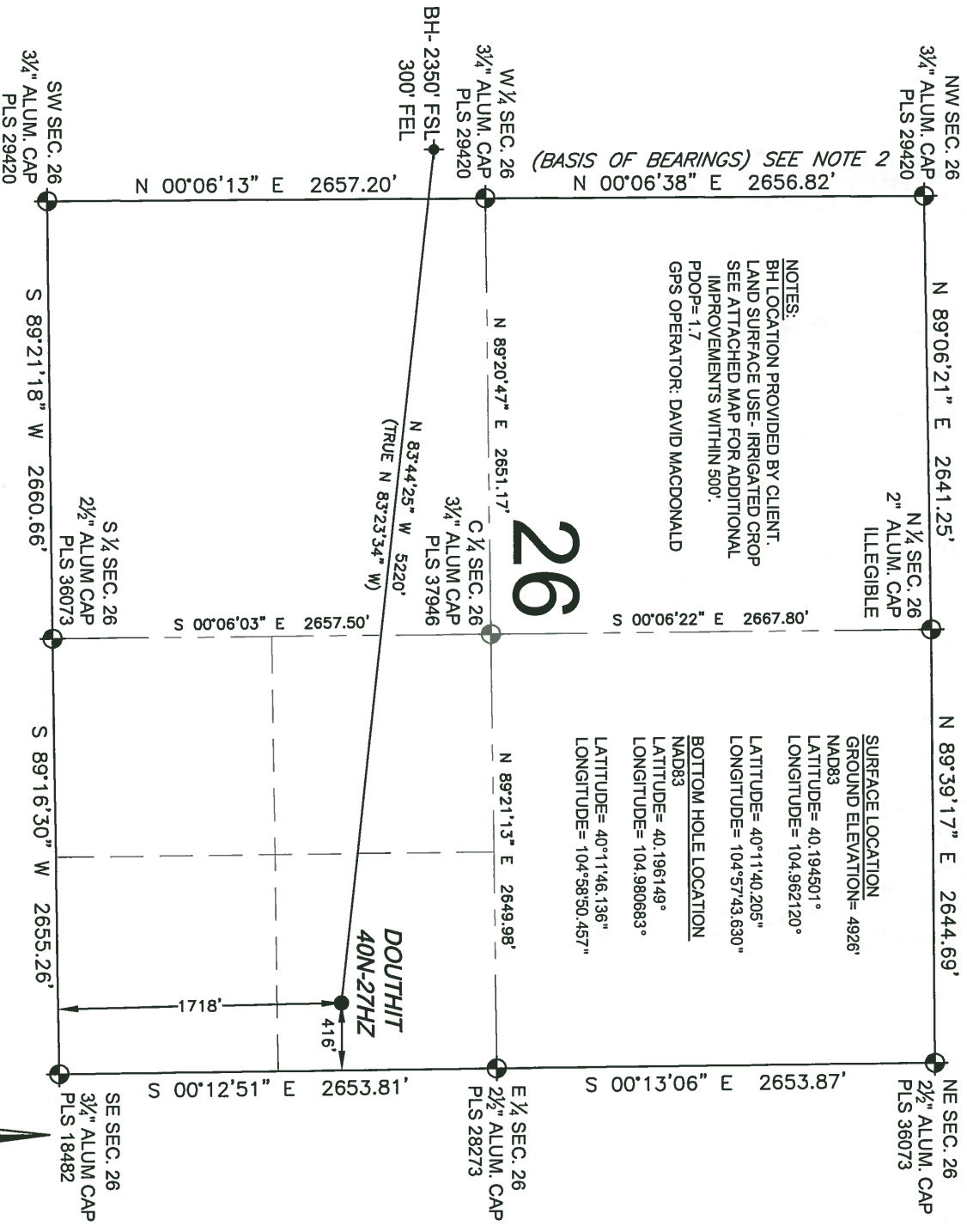


WELL LOCATION CERTIFICATE: DOUTHIT 40N-27HZ

SECTION 26, TOWNSHIP 3 NORTH, RANGE 68 WEST, 6TH P.M.



NOTES:
BH LOCATION PROVIDED BY CLIENT.
LAND SURFACE USE- IRRIGATED CROP
SEE ATTACHED MAP FOR ADDITIONAL
IMPROVEMENTS WITHIN 500'.
PDOP= 1.7
GPS OPERATOR: DAVID MACDONALD

SURFACE LOCATION
GROUND ELEVATION= 4926'
NAD83
LATITUDE= 40.194501°
LONGITUDE= 104.962120°
LATITUDE= 40°11'40.205"
LONGITUDE= 104°57'43.630"
BOTTOM HOLE LOCATION
NAD83
LATITUDE= 40.196149°
LONGITUDE= 104.980683°
LATITUDE= 40°11'46.136"
LONGITUDE= 104°58'50.457"

LEGEND

- = EXISTING MONUMENT
- ◆ = BOTTOM HOLE
- = PROPOSED WELL
- ◆ = EXISTING WELL
- BH = BOTTOM HOLE

NOTES:

1. THIS FIELD SURVEY CONFORMS TO THE MINIMUM STANDARDS SET BY THE C.O.G.C., RULE NO. 215
2. BEARINGS AND DISTANCE SHOWN HEREON ARE GRID AND BASED ON THE COLORADO STATE PLANE COORDINATE SYSTEM, NAD 83/2011 BETWEEN MONUMENTS AS LABELED HEREON AND ELEVATIONS SHOWN ARE NAVD 88, AS DERIVED BY GPS OBSERVATIONS.
3. GRID DISTANCES ARE SHOWN, AS MEASURED IN THE FIELD, WITH TIES TO WELLS MEASURED PERPENDICULAR TO SECTION LINES.



BRADLEY L. LAMAN, PLS 38345
COLORADO LICENSED PROFESSIONAL LAND SURVEYOR
FOR AND ON BEHALF OF P.F.S., LLC

PREPARED BY:	FIELD DATE:	SURFACE LOCATION:
PEFS	11-20-13	NE 1/4, SE 1/4,
PROFESSIONAL FIELD SURVEYOR, LTD.	DRAWING DATE:	SEC. 26, T3N, R68W, 6TH P.M.
1801 W. 72nd Ave. Denver, CO 80234	11-23-13	
BY:	CHECKED:	WELD COUNTY, COLORADO
SMF	TJN	

NOTICE: ACCORDING TO COLORADO LAW YOU MUST COMMENCE ANY LEGAL ACTION BASED UPON ANY DEFECT IN THIS SURVEY WITHIN THREE YEARS AFTER YOU FIRST DISCOVER SUCH DEFECT. IN NO EVENT MAY ANY ACTION BASED UPON ANY DEFECT IN THIS SURVEY BE COMMENCED MORE THAN TEN YEARS FROM THIS SAID DATE OF THIS CERTIFICATION SHOWN HEREON.



