

# KERR-MCGEE OIL & GAS ONSHORE LP

Location: COLORADO Slot: SLOTH34 DOUTHIT 40N-27HZ (1718FSL & 416FEL, SEC.26)  
Field: WELD COUNTY (KERR MCGEE) Well: DOUTHIT 40N-27HZ  
Facility: SEC.26-T3N-R68W Wellbore: DOUTHIT 40N-27HZ PWB

Plot reference wellpath is DOUTHIT 40N-27HZ (REV-A.0) PWP

True vertical depths are referenced to XTREME 20 (16KB) (RKB)  
Measured depths are referenced to XTREME 20 (16KB) (RKB)  
XTREME 20 (16KB) (RKB) to Mean Sea Level: 4941 feet  
Mean Sea Level to Mud line (At Slot: SLOTH34 DOUTHIT 40N-27HZ (1718FSL & 416FEL, SEC.26)): 0 feet  
Coordinates are in feet referenced to Slot  
Created by: greson on 15/Sep/2014

## Location Information

Facility Name	Grid East (US ft)	Grid North (US ft)	Latitude	Longitude
SEC.26-T3N-R68W	3148916.228	1312372.228	40°11'32.67"N	104°58'26.78"W
Slot	Local N (ft)	Local E (ft)	Grid East (US ft)	Grid North (US ft)
SLOTH34 DOUTHIT 40N-27HZ (1718FSL & 416FEL, SEC.26)	762.02	3346.82	3150208.318	1314155.024
XTREME 20 (16KB) (RKB) to Mud line (At Slot: SLOTH34 DOUTHIT 40N-27HZ (1718FSL & 416FEL, SEC.26))				4941ft
Main Sea Level to Mud line (At Slot: SLOTH34 DOUTHIT 40N-27HZ (1718FSL & 416FEL, SEC.26))				0ft
XTREME 20 (16KB) (RKB) to Mean Sea Level				4941ft

## Survey Program

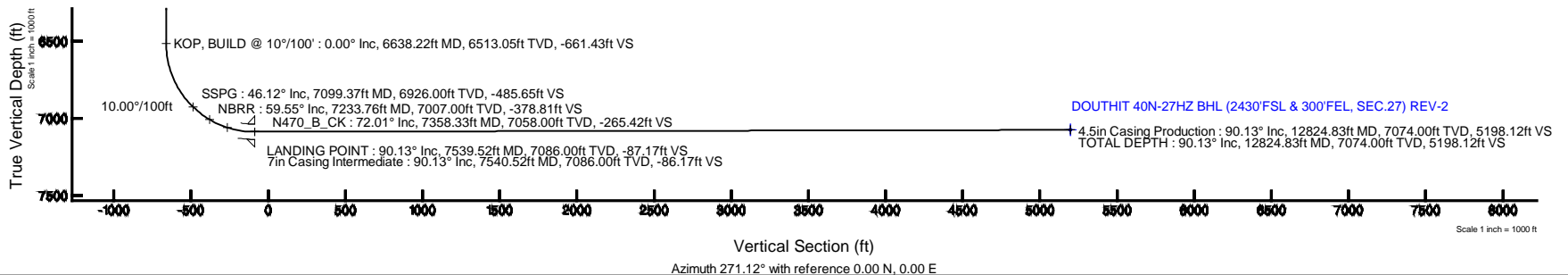
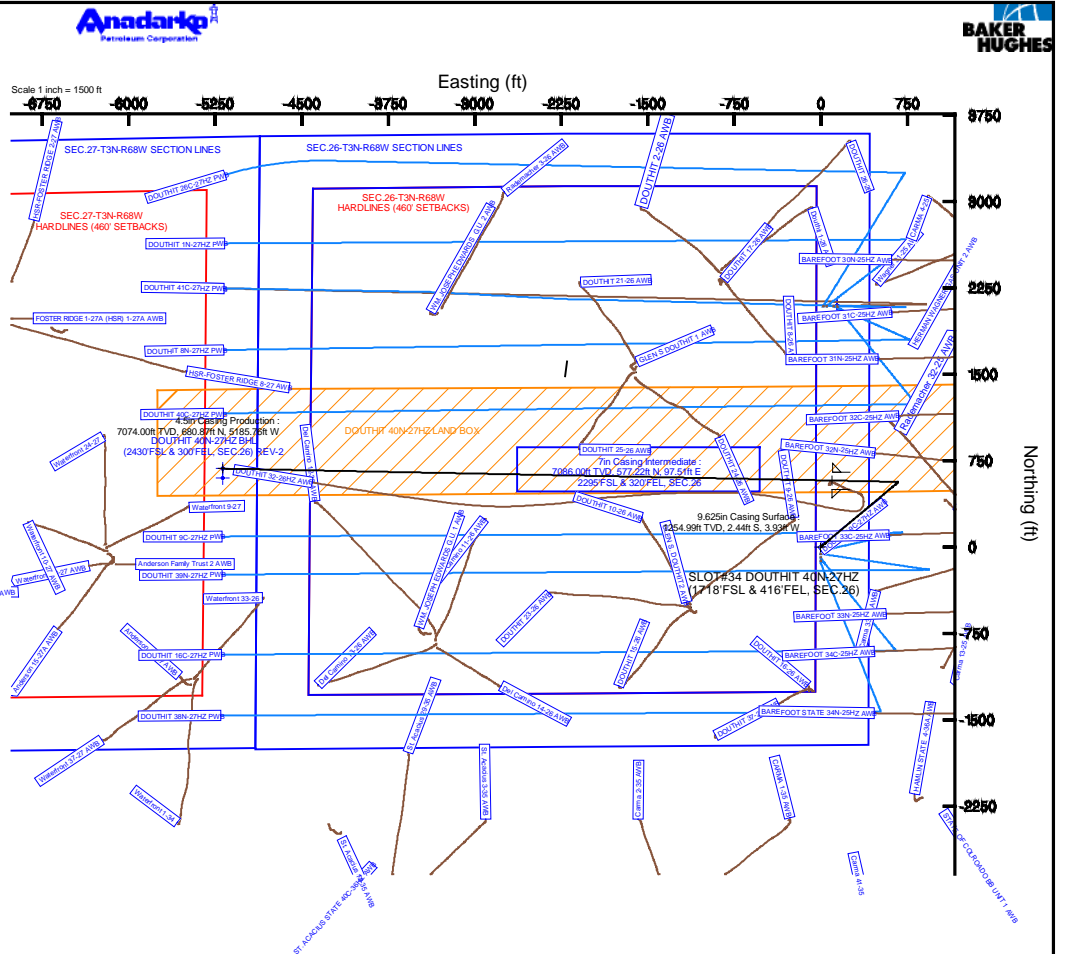
Start MD (ft)	End MD (ft)	Tool	Model	Log Name/Comment	Wellbore
16.00	1181.00	Generic gyro - continuous	Generic gyro - continuous (Standard)		DOUTHIT 40N-27HZ AWB
1181.00	7539.34	NavTrak	NavTrak (FR)		DOUTHIT 40N-27HZ PWB
7539.34	12824.83	NavTrak	NavTrak (FR)		DOUTHIT 40N-27HZ PWB

## Well Profile Data

Design Comment	MD (ft)	Inc (°)	Az (°)	TVD (ft)	Local N (ft)	Local E (ft)	DLS (°/100ft)	VS (ft)
TIE-INTO GYRO SURVEYS	1181.00	0.410	236.910	1180.99	-2.15	-3.48	0.35	3.44
BEGIN NUJGE	1375.02	0.410	236.910	1375.00	-2.91	-4.65	0.00	4.59
END NUJGE	2295.37	18.000	50.000	2280.62	87.48	102.45	2.00	-100.71
BEGIN DROP	4250.44	18.000	50.000	4140.00	475.81	565.25	0.00	-555.81
END DROP	5150.44	0.000	271.124	5025.27	565.94	672.66	2.00	-661.43
KOP, BUILD @ 10°/100'	6638.22	0.000	271.124	6513.05	565.94	672.66	0.00	-661.43
LANDING POINT	7539.52	90.130	271.124	7086.00	577.21	98.51	10.00	-87.17
TOTAL DEPTH	12824.83	90.130	271.124	7074.00	680.87	-5185.76	0.00	5198.12

## Targets

Name	MD (ft)	TVD (ft)	Local N (ft)	Local E (ft)	Grid East (US ft)	Grid North (US ft)	Latitude	Longitude
SEC.26-T3N-R68W HARDLINES (460' SETBACKS)	-18.00	2092.50	141.92	3150207.54	1316248.25	40°12'00.00"N	104°57'41.803"W	
SEC.26-T3N-R68W SECTION LINES	-18.00	2092.50	141.92	3150207.54	1316248.25	40°12'00.00"N	104°57'41.803"W	
SEC.27-T3N-R68W HARDLINES (460' SETBACKS)	-18.00	2092.50	141.92	3150207.54	1316248.25	40°12'00.00"N	104°57'41.803"W	
SEC.27-T3N-R68W SECTION LINES	-18.00	2092.50	141.92	3150207.54	1316248.25	40°12'00.00"N	104°57'41.803"W	
DOUTHIT 40N-27HZ BHL (2430'FSL & 300'FEL, SEC.26) REV-2	12824.83	7074.00	680.87	-5185.76	3148916.228	1314155.024	40°11'46.027"N	104°58'26.78"W
DOUTHIT 40N-27HZ BHL ON PLAT (2430'FSL & 300'FEL, SEC.26) REV-1	7074.00	680.87	-5185.76	3148916.228	1314155.024	40°11'46.027"N	104°58'26.78"W	
DOUTHIT 40N-27HZ LAND BOX	7074.00	0.00	0.00	3150208.32	1314155.02	40°11'40.204"N	104°57'43.632"W	



# Planned Wellpath Report

DOUTHIT 40N-27HZ (REV-A.0) PWP

Page 1 of 7

REFERENCE WELLPATH IDENTIFICATION			
Operator	KERR-MCGEE OIL & GAS ONSHORE LP	Slot	SLOT#34 DOUTHIT 40N-27HZ (1718'FSL & 416'FEL, SEC.26)
Area	COLORADO	Well	DOUTHIT 40N-27HZ
Field	WELD COUNTY (KERR MCGEE)	Wellbore	DOUTHIT 40N-27HZ PWB
Facility	SEC.26-T3N-R68W		

REPORT SETUP INFORMATION			
Projection System	NAD83 / Lambert Colorado SP, Northern Zone (501), US feet	Software System	WellArchitect® 4.0.0
North Reference	True	User	Precain
Scale	0.999957	Report Generated	15/Sep/2014 at 13:14
Convergence at slot	n/a	Database/Source file	WellArchitectDB/DOUTHIT_40N-27HZ_PWB.xml

WELLPATH LOCATION						
	Local coordinates		Grid coordinates		Geographic coordinates	
	North[ft]	East[ft]	Easting[US ft]	Northing[US ft]	Latitude	Longitude
Slot Location	762.02	3346.82	3150258.32	1314155.02	40°11'40.204"N	104°57'43.632"W
Facility Reference Pt			3146916.23	1313373.21	40°11'32.676"N	104°58'26.760"W
Field Reference Pt			3197771.84	1268891.29	40°04'09.600"N	104°47'36.000"W

WELLPATH DATUM			
Calculation method	Minimum curvature	XTREME 20 (16'KB) (RKB) to Facility Vertical Datum	4941.00ft
Horizontal Reference Pt	Slot	XTREME 20 (16'KB) (RKB) to Mean Sea Level	4941.00ft
Vertical Reference Pt	XTREME 20 (16'KB) (RKB)	XTREME 20 (16'KB) (RKB) to Mud Line at Slot (SLOT#34 DOUTHIT 40N-27HZ (1718'FSL & 416'FEL, SEC.26))	4941.00ft
MD Reference Pt	XTREME 20 (16'KB) (RKB)	Section Origin	N 0.00, E 0.00 ft
Field Vertical Reference	Mean Sea Level	Section Azimuth	271.12°

# Planned Wellpath Report

DOUTHIT 40N-27HZ (REV-A.0) PWP

Page 2 of 7

REFERENCE WELLPATH IDENTIFICATION				
Operator	KERR-MCGEE OIL & GAS ONSHORE LP		Slot	SLOT#34 DOUTHIT 40N-27HZ (1718'FSL & 416'FEL, SEC.26)
Area	COLORADO		Well	DOUTHIT 40N-27HZ
Field	WELD COUNTY (KERR MCGEE)		Wellbore	DOUTHIT 40N-27HZ PWB
Facility	SEC.26-T3N-R68W			

## WELLPATH DATA (137 stations) † = interpolated/extrapolated station

MD [ft]	Inclination [°]	Azimuth [°]	TVD [ft]	Vert Sect [ft]	North [ft]	East [ft]	Latitude	Longitude	DLS [°/100ft]	Comments
0.00†	0.000	231.720	0.00	0.00	0.00	0.00	40°11'40.204"N	104°57'43.632"W	0.00	
16.00	0.000	231.720	16.00	0.00	0.00	0.00	40°11'40.204"N	104°57'43.632"W	0.00	
116.00	0.370	231.720	116.00	0.25	-0.20	-0.25	40°11'40.202"N	104°57'43.635"W	0.37	
216.00	0.200	225.640	216.00	0.62	-0.52	-0.63	40°11'40.199"N	104°57'43.640"W	0.17	
316.00	0.220	179.490	316.00	0.74	-0.84	-0.75	40°11'40.196"N	104°57'43.642"W	0.17	
416.00	0.080	188.480	416.00	0.74	-1.10	-0.76	40°11'40.193"N	104°57'43.642"W	0.14	
516.00	0.160	14.980	516.00	0.72	-1.03	-0.74	40°11'40.194"N	104°57'43.642"W	0.24	
616.00	0.070	153.290	616.00	0.66	-0.95	-0.67	40°11'40.195"N	104°57'43.641"W	0.22	
716.00	0.310	238.050	716.00	0.85	-1.15	-0.88	40°11'40.193"N	104°57'43.643"W	0.31	
816.00	0.260	265.060	816.00	1.31	-1.31	-1.33	40°11'40.191"N	104°57'43.649"W	0.14	
916.00	0.340	252.320	915.99	1.81	-1.42	-1.84	40°11'40.190"N	104°57'43.656"W	0.10	
1016.00	0.340	225.740	1015.99	2.30	-1.72	-2.34	40°11'40.187"N	104°57'43.662"W	0.16	
1116.00	0.520	262.240	1115.99	2.96	-1.99	-3.00	40°11'40.184"N	104°57'43.671"W	0.32	
1181.00	0.410	236.910	1180.99	3.44	-2.15	-3.48	40°11'40.183"N	104°57'43.677"W	0.35	TIE-INTO GYRO SURVEYS
1281.00†	0.410	236.910	1280.98	4.03	-2.54	-4.08	40°11'40.179"N	104°57'43.685"W	0.00	
1375.02	0.410	236.910	1375.00	4.59	-2.91	-4.65	40°11'40.175"N	104°57'43.692"W	0.00	BEGIN NUDGE
1381.00†	0.292	239.680	1380.98	4.62	-2.93	-4.68	40°11'40.175"N	104°57'43.692"W	2.00	
1481.00†	1.713	48.534	1480.97	3.74	-2.07	-3.78	40°11'40.184"N	104°57'43.681"W	2.00	
1581.00†	3.713	49.405	1580.85	0.22	1.03	-0.20	40°11'40.214"N	104°57'43.635"W	2.00	
1681.00†	5.713	49.666	1680.51	-5.93	6.36	6.05	40°11'40.267"N	104°57'43.554"W	2.00	
1781.00†	7.713	49.792	1779.82	-14.70	13.91	14.97	40°11'40.341"N	104°57'43.439"W	2.00	
1881.00†	9.713	49.867	1878.66	-26.08	23.68	26.55	40°11'40.438"N	104°57'43.290"W	2.00	
1981.00†	11.713	49.916	1976.91	-40.06	35.65	40.76	40°11'40.556"N	104°57'43.107"W	2.00	
2081.00†	13.713	49.951	2074.46	-56.62	49.82	57.61	40°11'40.696"N	104°57'42.890"W	2.00	
2181.00†	15.713	49.977	2171.17	-75.74	66.15	77.05	40°11'40.858"N	104°57'42.639"W	2.00	
2281.00†	17.713	49.997	2266.94	-97.39	84.64	99.07	40°11'41.040"N	104°57'42.355"W	2.00	
2295.37	18.000	50.000	2280.62	-100.71	87.48	102.45	40°11'41.068"N	104°57'42.312"W	2.00	END NUDGE
2381.00†	18.000	50.000	2362.06	-120.65	104.48	122.72	40°11'41.237"N	104°57'42.051"W	0.00	
2481.00†	18.000	50.000	2457.17	-143.92	124.35	146.39	40°11'41.433"N	104°57'41.746"W	0.00	
2581.00†	18.000	50.000	2552.27	-167.20	144.21	170.06	40°11'41.629"N	104°57'41.441"W	0.00	
2681.00†	18.000	50.000	2647.38	-190.48	164.07	193.74	40°11'41.825"N	104°57'41.135"W	0.00	
2781.00†	18.000	50.000	2742.48	-213.76	183.94	217.41	40°11'42.022"N	104°57'40.830"W	0.00	
2881.00†	18.000	50.000	2837.59	-237.04	203.80	241.08	40°11'42.218"N	104°57'40.525"W	0.00	
2981.00†	18.000	50.000	2932.69	-260.31	223.66	264.75	40°11'42.414"N	104°57'40.220"W	0.00	
3081.00†	18.000	50.000	3027.80	-283.59	243.53	288.42	40°11'42.611"N	104°57'39.915"W	0.00	
3181.00†	18.000	50.000	3122.90	-306.87	263.39	312.10	40°11'42.807"N	104°57'39.610"W	0.00	
3281.00†	18.000	50.000	3218.01	-330.15	283.25	335.77	40°11'43.003"N	104°57'39.305"W	0.00	
3381.00†	18.000	50.000	3313.12	-353.42	303.12	359.44	40°11'43.199"N	104°57'39.000"W	0.00	
3481.00†	18.000	50.000	3408.22	-376.70	322.98	383.11	40°11'43.396"N	104°57'38.695"W	0.00	
3581.00†	18.000	50.000	3503.33	-399.98	342.84	406.78	40°11'43.592"N	104°57'38.390"W	0.00	
3681.00†	18.000	50.000	3598.43	-423.26	362.71	430.46	40°11'43.788"N	104°57'38.085"W	0.00	
3781.00†	18.000	50.000	3693.54	-446.54	382.57	454.13	40°11'43.985"N	104°57'37.780"W	0.00	
3881.00†	18.000	50.000	3788.64	-469.81	402.43	477.80	40°11'44.181"N	104°57'37.475"W	0.00	
3981.00†	18.000	50.000	3883.75	-493.09	422.30	501.47	40°11'44.377"N	104°57'37.170"W	0.00	
4081.00†	18.000	50.000	3978.86	-516.37	442.16	525.14	40°11'44.573"N	104°57'36.865"W	0.00	

# Planned Wellpath Report

DOUTHIT 40N-27HZ (REV-A.0) PWP

Page 3 of 7

REFERENCE WELLPATH IDENTIFICATION				
Operator	KERR-MCGEE OIL & GAS ONSHORE LP		Slot	SLOT#34 DOUTHIT 40N-27HZ (1718'FSL & 416'FEL, SEC.26)
Area	COLORADO		Well	DOUTHIT 40N-27HZ
Field	WELD COUNTY (KERR MCGEE)		Wellbore	DOUTHIT 40N-27HZ PWB
Facility	SEC.26-T3N-R68W			

## WELLPATH DATA (137 stations) † = interpolated/extrapolated station

MD [ft]	Inclination [°]	Azimuth [°]	TVD [ft]	Vert Sect [ft]	North [ft]	East [ft]	Latitude	Longitude	DLS [°/100ft]	Comments
4181.00†	18.000	50.000	4073.96	-539.65	462.02	548.82	40°11'44.770"N	104°57'36.560"W	0.00	
4250.44	18.000	50.000	4140.00	-555.81	475.81	565.25	40°11'44.906"N	104°57'36.348"W	0.00	BEGIN DROP
4281.00†	17.389	50.000	4169.12	-562.81	481.79	572.37	40°11'44.965"N	104°57'36.256"W	2.00	
4381.00†	15.389	50.000	4265.05	-584.06	499.92	593.98	40°11'45.144"N	104°57'35.978"W	2.00	
4481.00†	13.389	50.000	4361.91	-602.78	515.89	613.02	40°11'45.302"N	104°57'35.732"W	2.00	
4581.00†	11.389	50.000	4459.57	-618.94	529.68	629.45	40°11'45.438"N	104°57'35.521"W	2.00	
4681.00†	9.389	50.000	4557.93	-632.52	541.27	643.27	40°11'45.553"N	104°57'35.343"W	2.00	
4781.00†	7.389	50.000	4656.85	-643.51	550.65	654.44	40°11'45.645"N	104°57'35.199"W	2.00	
4881.00†	5.389	50.000	4756.23	-651.89	557.80	662.96	40°11'45.716"N	104°57'35.089"W	2.00	
4981.00†	3.389	50.000	4855.93	-657.66	562.72	668.83	40°11'45.765"N	104°57'35.013"W	2.00	
5081.00†	1.389	50.000	4955.84	-660.80	565.40	672.02	40°11'45.791"N	104°57'34.972"W	2.00	
5150.44	0.000	271.124	5025.27	-661.43	565.94	672.66	40°11'45.797"N	104°57'34.964"W	2.00	END DROP
5181.00†	0.000	271.124	5055.83	-661.43	565.94	672.66	40°11'45.797"N	104°57'34.964"W	0.00	
5281.00†	0.000	271.124	5155.83	-661.43	565.94	672.66	40°11'45.797"N	104°57'34.964"W	0.00	
5381.00†	0.000	271.124	5255.83	-661.43	565.94	672.66	40°11'45.797"N	104°57'34.964"W	0.00	
5481.00†	0.000	271.124	5355.83	-661.43	565.94	672.66	40°11'45.797"N	104°57'34.964"W	0.00	
5581.00†	0.000	271.124	5455.83	-661.43	565.94	672.66	40°11'45.797"N	104°57'34.964"W	0.00	
5681.00†	0.000	271.124	5555.83	-661.43	565.94	672.66	40°11'45.797"N	104°57'34.964"W	0.00	
5781.00†	0.000	271.124	5655.83	-661.43	565.94	672.66	40°11'45.797"N	104°57'34.964"W	0.00	
5881.00†	0.000	271.124	5755.83	-661.43	565.94	672.66	40°11'45.797"N	104°57'34.964"W	0.00	
5981.00†	0.000	271.124	5855.83	-661.43	565.94	672.66	40°11'45.797"N	104°57'34.964"W	0.00	
6081.00†	0.000	271.124	5955.83	-661.43	565.94	672.66	40°11'45.797"N	104°57'34.964"W	0.00	
6181.00†	0.000	271.124	6055.83	-661.43	565.94	672.66	40°11'45.797"N	104°57'34.964"W	0.00	
6281.00†	0.000	271.124	6155.83	-661.43	565.94	672.66	40°11'45.797"N	104°57'34.964"W	0.00	
6381.00†	0.000	271.124	6255.83	-661.43	565.94	672.66	40°11'45.797"N	104°57'34.964"W	0.00	
6481.00†	0.000	271.124	6355.83	-661.43	565.94	672.66	40°11'45.797"N	104°57'34.964"W	0.00	
6581.00†	0.000	271.124	6455.83	-661.43	565.94	672.66	40°11'45.797"N	104°57'34.964"W	0.00	
6638.22	0.000	271.124	6513.05	-661.43	565.94	672.66	40°11'45.797"N	104°57'34.964"W	0.00	KOP, BUILD @ 10°/100'
6681.00†	4.278	271.124	6555.79	-659.84	565.97	671.07	40°11'45.797"N	104°57'34.984"W	10.00	
6781.00†	14.278	271.124	6654.36	-643.73	566.29	654.97	40°11'45.800"N	104°57'35.192"W	10.00	
6881.00†	24.278	271.124	6748.63	-610.76	566.94	622.00	40°11'45.806"N	104°57'35.617"W	10.00	
6981.00†	34.278	271.124	6835.75	-561.92	567.89	573.17	40°11'45.816"N	104°57'36.246"W	10.00	
7081.00†	44.278	271.124	6913.06	-498.69	569.13	509.95	40°11'45.828"N	104°57'37.060"W	10.00	
7181.00†	54.278	271.124	6978.21	-423.00	570.62	434.27	40°11'45.843"N	104°57'38.036"W	10.00	
7281.00†	64.278	271.124	7029.23	-337.14	572.30	348.43	40°11'45.859"N	104°57'39.142"W	10.00	
7381.00†	74.278	271.124	7064.57	-243.73	574.13	255.04	40°11'45.878"N	104°57'40.345"W	10.00	
7481.00†	84.278	271.124	7083.15	-145.60	576.06	156.93	40°11'45.897"N	104°57'41.610"W	10.00	
7539.52	90.130	271.124	7086.00	-87.17	577.21	98.51	40°11'45.908"N	104°57'42.362"W	10.00	LANDING POINT
7581.00†	90.130	271.124	7085.91	-45.69	578.02	57.04	40°11'45.916"N	104°57'42.897"W	0.00	
7681.00†	90.130	271.124	7085.68	54.31	579.98	-42.94	40°11'45.935"N	104°57'44.185"W	0.00	
7781.00†	90.130	271.124	7085.46	154.31	581.94	-142.92	40°11'45.955"N	104°57'45.474"W	0.00	
7881.00†	90.130	271.124	7085.23	254.31	583.90	-242.90	40°11'45.974"N	104°57'46.762"W	0.00	
7981.00†	90.130	271.124	7085.00	354.31	585.86	-342.88	40°11'45.993"N	104°57'48.051"W	0.00	
8081.00†	90.130	271.124	7084.77	454.31	587.83	-442.86	40°11'46.013"N	104°57'49.339"W	0.00	
8181.00†	90.130	271.124	7084.55	554.31	589.79	-542.84	40°11'46.032"N	104°57'50.627"W	0.00	

# Planned Wellpath Report

DOUTHIT 40N-27HZ (REV-A.0) PWP

Page 4 of 7

REFERENCE WELLPATH IDENTIFICATION				
Operator	KERR-MCGEE OIL & GAS ONSHORE LP		Slot	SLOT#34 DOUTHIT 40N-27HZ (1718'FSL & 416'FEL, SEC.26)
Area	COLORADO		Well	DOUTHIT 40N-27HZ
Field	WELD COUNTY (KERR MCGEE)		Wellbore	DOUTHIT 40N-27HZ PWB
Facility	SEC.26-T3N-R68W			

## WELLPATH DATA (137 stations) † = interpolated/extrapolated station

MD [ft]	Inclination [°]	Azimuth [°]	TVD [ft]	Vert Sect [ft]	North [ft]	East [ft]	Latitude	Longitude	DLS [°/100ft]	Comments
8281.00†	90.130	271.124	7084.32	654.31	591.75	-642.82	40°11'46.052"N	104°57'51.916"W	0.00	
8381.00†	90.130	271.124	7084.09	754.31	593.71	-742.80	40°11'46.071"N	104°57'53.204"W	0.00	
8481.00†	90.130	271.124	7083.87	854.31	595.67	-842.78	40°11'46.090"N	104°57'54.493"W	0.00	
8581.00†	90.130	271.124	7083.64	954.31	597.63	-942.76	40°11'46.110"N	104°57'55.781"W	0.00	
8681.00†	90.130	271.124	7083.41	1054.31	599.59	-1042.74	40°11'46.129"N	104°57'57.069"W	0.00	
8781.00†	90.130	271.124	7083.18	1154.31	601.56	-1142.73	40°11'46.148"N	104°57'58.358"W	0.00	
8881.00†	90.130	271.124	7082.96	1254.31	603.52	-1242.71	40°11'46.168"N	104°57'59.646"W	0.00	
8981.00†	90.130	271.124	7082.73	1354.30	605.48	-1342.69	40°11'46.187"N	104°58'00.935"W	0.00	
9081.00†	90.130	271.124	7082.50	1454.30	607.44	-1442.67	40°11'46.206"N	104°58'02.223"W	0.00	
9181.00†	90.130	271.124	7082.28	1554.30	609.40	-1542.65	40°11'46.226"N	104°58'03.511"W	0.00	
9281.00†	90.130	271.124	7082.05	1654.30	611.36	-1642.63	40°11'46.245"N	104°58'04.800"W	0.00	
9381.00†	90.130	271.124	7081.82	1754.30	613.32	-1742.61	40°11'46.264"N	104°58'06.088"W	0.00	
9481.00†	90.130	271.124	7081.60	1854.30	615.28	-1842.59	40°11'46.284"N	104°58'07.377"W	0.00	
9581.00†	90.130	271.124	7081.37	1954.30	617.25	-1942.57	40°11'46.303"N	104°58'08.665"W	0.00	
9681.00†	90.130	271.124	7081.14	2054.30	619.21	-2042.55	40°11'46.322"N	104°58'09.954"W	0.00	
9781.00†	90.130	271.124	7080.91	2154.30	621.17	-2142.53	40°11'46.341"N	104°58'11.242"W	0.00	
9881.00†	90.130	271.124	7080.69	2254.30	623.13	-2242.51	40°11'46.361"N	104°58'12.530"W	0.00	
9981.00†	90.130	271.124	7080.46	2354.30	625.09	-2342.49	40°11'46.380"N	104°58'13.819"W	0.00	
10081.00†	90.130	271.124	7080.23	2454.30	627.05	-2442.47	40°11'46.399"N	104°58'15.107"W	0.00	
10181.00†	90.130	271.124	7080.01	2554.30	629.01	-2542.45	40°11'46.419"N	104°58'16.396"W	0.00	
10281.00†	90.130	271.124	7079.78	2654.30	630.98	-2642.43	40°11'46.438"N	104°58'17.684"W	0.00	
10381.00†	90.130	271.124	7079.55	2754.30	632.94	-2742.41	40°11'46.457"N	104°58'18.972"W	0.00	
10481.00†	90.130	271.124	7079.32	2854.30	634.90	-2842.39	40°11'46.476"N	104°58'20.261"W	0.00	
10581.00†	90.130	271.124	7079.10	2954.30	636.86	-2942.37	40°11'46.496"N	104°58'21.549"W	0.00	
10681.00†	90.130	271.124	7078.87	3054.30	638.82	-3042.35	40°11'46.515"N	104°58'22.838"W	0.00	
10781.00†	90.130	271.124	7078.64	3154.30	640.78	-3142.34	40°11'46.534"N	104°58'24.126"W	0.00	
10881.00†	90.130	271.124	7078.42	3254.30	642.74	-3242.32	40°11'46.553"N	104°58'25.414"W	0.00	
10981.00†	90.130	271.124	7078.19	3354.30	644.71	-3342.30	40°11'46.573"N	104°58'26.703"W	0.00	
11081.00†	90.130	271.124	7077.96	3454.30	646.67	-3442.28	40°11'46.592"N	104°58'27.991"W	0.00	
11181.00†	90.130	271.124	7077.73	3554.30	648.63	-3542.26	40°11'46.611"N	104°58'29.280"W	0.00	
11281.00†	90.130	271.124	7077.51	3654.30	650.59	-3642.24	40°11'46.630"N	104°58'30.568"W	0.00	
11381.00†	90.130	271.124	7077.28	3754.30	652.55	-3742.22	40°11'46.650"N	104°58'31.857"W	0.00	
11481.00†	90.130	271.124	7077.05	3854.30	654.51	-3842.20	40°11'46.669"N	104°58'33.145"W	0.00	
11581.00†	90.130	271.124	7076.83	3954.30	656.47	-3942.18	40°11'46.688"N	104°58'34.433"W	0.00	
11681.00†	90.130	271.124	7076.60	4054.30	658.44	-4042.16	40°11'46.707"N	104°58'35.722"W	0.00	
11781.00†	90.130	271.124	7076.37	4154.30	660.40	-4142.14	40°11'46.727"N	104°58'37.010"W	0.00	
11881.00†	90.130	271.124	7076.14	4254.30	662.36	-4242.12	40°11'46.746"N	104°58'38.299"W	0.00	
11981.00†	90.130	271.124	7075.92	4354.30	664.32	-4342.10	40°11'46.765"N	104°58'39.587"W	0.00	
12081.00†	90.130	271.124	7075.69	4454.30	666.28	-4442.08	40°11'46.784"N	104°58'40.875"W	0.00	
12181.00†	90.130	271.124	7075.46	4554.30	668.24	-4542.06	40°11'46.803"N	104°58'42.164"W	0.00	
12281.00†	90.130	271.124	7075.24	4654.30	670.20	-4642.04	40°11'46.823"N	104°58'43.452"W	0.00	
12381.00†	90.130	271.124	7075.01	4754.30	672.16	-4742.02	40°11'46.842"N	104°58'44.741"W	0.00	
12481.00†	90.130	271.124	7074.78	4854.30	674.13	-4842.00	40°11'46.861"N	104°58'46.029"W	0.00	
12581.00†	90.130	271.124	7074.55	4954.30	676.09	-4941.98	40°11'46.880"N	104°58'47.317"W	0.00	
12681.00†	90.130	271.124	7074.33	5054.30	678.05	-5041.96	40°11'46.899"N	104°58'48.606"W	0.00	

# Planned Wellpath Report

DOUTHIT 40N-27HZ (REV-A.0) PWP

Page 5 of 7

REFERENCE WELLPATH IDENTIFICATION			
Operator	KERR-MCGEE OIL & GAS ONSHORE LP	Slot	SLOT#34 DOUTHIT 40N-27HZ (1718'FSL & 416'FEL, SEC.26)
Area	COLORADO	Well	DOUTHIT 40N-27HZ
Field	WELD COUNTY (KERR MCGEE)	Wellbore	DOUTHIT 40N-27HZ PWB
Facility	SEC.26-T3N-R68W		

WELLPATH DATA (137 stations) † = interpolated/extrapolated station										
MD [ft]	Inclination [°]	Azimuth [°]	TVD [ft]	Vert Sect [ft]	North [ft]	East [ft]	Latitude	Longitude	DLS [°/100ft]	Comments
12781.00†	90.130	271.124	7074.10	5154.30	680.01	-5141.95	40°11'46.919"N	104°58'49.894"W	0.00	
12824.83	90.130	271.124	7074.00 <sup>1</sup>	5198.12	680.87	-5185.76	40°11'46.927"N	104°58'50.459"W	0.00	TOTAL DEPTH

HOLE & CASING SECTIONS - Ref Wellbore: DOUTHIT 40N-27HZ PWB Ref Wellpath: DOUTHIT 40N-27HZ (REV-A.0) PWP									
String/Diameter	Start MD [ft]	End MD [ft]	Interval [ft]	Start TVD [ft]	End TVD [ft]	Start N/S [ft]	Start E/W [ft]	End N/S [ft]	End E/W [ft]
13.5in Open Hole	16.00	1181.00	1165.00	16.00	1180.99	0.00	0.00	-2.15	-3.48
13.5in Open Hole	1181.00	1255.00	74.00	1180.99	1254.99	-2.15	-3.48	-2.44	-3.93
9.625in Casing Surface	16.00	1255.00	1239.00	16.00	1254.99	0.00	0.00	-2.44	-3.93
8.75in Open Hole	1255.00	7540.52	6285.52	1254.99	7086.00	-2.44	-3.93	577.22	97.51
7in Casing Intermediate	16.00	7540.52	7524.52	16.00	7086.00	0.00	0.00	577.22	97.51
6.125in Open Hole	7540.52	12825.83	5285.31	7086.00	NA	577.22	97.51	NA	NA
4.5in Casing Production	16.00	12824.83	12808.83	16.00	7074.00	0.00	0.00	680.87	-5185.76

# Planned Wellpath Report

DOUTHIT 40N-27HZ (REV-A.0) PWP

Page 6 of 7

REFERENCE WELLPATH IDENTIFICATION			
Operator	KERR-MCGEE OIL & GAS ONSHORE LP	Slot	SLOT#34 DOUTHIT 40N-27HZ (1718'FSL & 416'FEL, SEC.26)
Area	COLORADO	Well	DOUTHIT 40N-27HZ
Field	WELD COUNTY (KERR MCGEE)	Wellbore	DOUTHIT 40N-27HZ PWB
Facility	SEC.26-T3N-R68W		

TARGETS									
Name	MD [ft]	TVD [ft]	North [ft]	East [ft]	Grid East [US ft]	Grid North [US ft]	Latitude	Longitude	Shape
SEC.26-T3N-R68W HARDLINES (460' SETBACKS)		-18.00	2092.50	141.92	3150387.54	1316248.25	40°12'00.882"N	104°57'41.803"W	polygon
SEC.26-T3N-R68W SECTION LINES		-18.00	2092.50	141.92	3150387.54	1316248.25	40°12'00.882"N	104°57'41.803"W	polygon
SEC.27-T3N-R68W HARDLINES (460' SETBACKS)		-18.00	2092.50	141.92	3150387.54	1316248.25	40°12'00.882"N	104°57'41.803"W	polygon
SEC.27-T3N-R68W SECTION LINES		-18.00	2092.50	141.92	3150387.54	1316248.25	40°12'00.882"N	104°57'41.803"W	polygon
1) DOUTHIT 40N-27HZ BHL (2430'FSL & 300'FEL, SEC.26) REV-2	12824.83	7074.00	680.87	-5185.76	3145068.76	1314804.40	40°11'46.927"N	104°58'50.459"W	point
DOUTHIT 40N-27HZ BHL ON PLAT (2350'FSL & 300'FEL, SEC.26) REV-1		7074.00	600.87	-5185.76	3145069.24	1314724.40	40°11'46.136"N	104°58'50.459"W	point
DOUTHIT 40N-27HZ LAND BOX		7075.00	0.00	0.00	3150258.32	1314155.02	40°11'40.204"N	104°57'43.632"W	polygon

SURVEY PROGRAM - Ref Wellbore: DOUTHIT 40N-27HZ PWB Ref Wellpath: DOUTHIT 40N-27HZ (REV-A.0) PWP				
Start MD [ft]	End MD [ft]	Positional Uncertainty Model	Log Name/Comment	Wellbore
16.00	1181.00	Generic gyro - continuous (Standard)		DOUTHIT 40N-27HZ AWB
1181.00	7539.34	NaviTrak (IFR)		DOUTHIT 40N-27HZ PWB
7539.34	12824.83	NaviTrak (IFR)		DOUTHIT 40N-27HZ PWB



# Planned Wellpath Report

DOUTHIT 40N-27HZ (REV-A.0) PWP

Page 7 of 7

REFERENCE WELLPATH IDENTIFICATION			
Operator	KERR-MCGEE OIL & GAS ONSHORE LP	Slot	SLOT#34 DOUTHIT 40N-27HZ (1718'FSL & 416'FEL, SEC.26)
Area	COLORADO	Well	DOUTHIT 40N-27HZ
Field	WELD COUNTY (KERR MCGEE)	Wellbore	DOUTHIT 40N-27HZ PWB
Facility	SEC.26-T3N-R68W		

WELLPATH COMMENTS					
MD [ft]	Inclination [°]	Azimuth [°]	TVD [ft]	Comment	
838.01	0.276	261.636	838.00	Fox Hills Base	
3717.35	18.000	50.000	3633.00	Parkman	
4194.71	18.000	50.000	4087.00	Sussex	
7099.37	46.115	271.124	6926.00	SSPG	
7233.76	59.554	271.124	7007.00	NBRR	
7358.33	72.011	271.124	7058.00	N470_B_CK	

DESIGN COMMENTS					
MD [ft]	Inclination [°]	Azimuth [°]	TVD [ft]	Comment	
1181.00	0.410	236.910	1180.99	TIE-INTO GYRO SURVEYS	
1375.02	0.410	236.910	1375.00	BEGIN NUDGE	
2295.37	18.000	50.000	2280.62	END NUDGE	
4250.44	18.000	50.000	4140.00	BEGIN DROP	
5150.44	0.000	271.124	5025.27	END DROP	
6638.22	0.000	271.124	6513.05	KOP, BUILD @ 10°/100'	
7539.52	90.130	271.124	7086.00	LANDING POINT	
12824.83	90.130	271.124	7074.00	TOTAL DEPTH	