



February 21, 2014

Mr. Brandon Danforth  
Environmental Specialist  
WPX Energy  
1058 County Road 215  
Parachute, Colorado 81635

**RE: RU 44-7 Drill Pad Baseline Water Quality Evaluation**

Dear Mr. Danforth,

Western Water & Land, Inc. (WWL) has completed a hydrologic Water Source evaluation for the WPX Energy Rocky Mountain LLC (WPX) RU 44-7 Drill Pad in accordance with Colorado Oil and Gas Conservation Commission (COGCC) Rule 609. Drill Pad RU 44-7 is located in SE1/4, SE1/4, Section 7, Township 7 S, Range 93 W 6<sup>th</sup> P.M. The evaluation considered all Water Sources as defined in Rule 609 within a 0.5-mile radius of the referenced drill pad. Water Sources located on the basis of section quarters were included in the evaluation if any portion of the section quarter(s) lies within the 0.5-mile radius area. A preliminary screening of the Water Sources was completed to identify the sources considered to be potentially available for baseline sampling pending results of the owner questionnaire, consent of the structure owners, and field inspections to verify sampling feasibility.. Each potentially available Water Source was then evaluated to identify the preferred sources for the baseline program. If the resulting number of potentially available sources was four or less, all of the sources were included in the list of preferred sources. If more than four sources were potentially available, the sources were prioritized based on WWL's hydrologic knowledge of the region, general hydrologic rationale, and in accordance with the guidelines specified in Rule 609.

**Water Sources**

Water Sources as defined in Rule 609 include Colorado Division of Water Resources (DWR) registered water wells (water wells with existing valid well permits), permitted or adjudicated springs, and monitoring wells installed for baseline sampling and monitoring under COGCC Rules 318A.e(4), 608, or 609. Water Sources located within a 0.5-mile radius of the RU 44-7 Drill Pad are shown in Figure 1. Monitoring Hole permits (MH designation), and expired, canceled, or denied permits of any type are not shown in Figure 1 unless otherwise described in this report. No Water Sources were identified to fall within the 0.5-mile radius area of Drill Pad RU 44-7.

If you have any questions or concerns, please contact me at (970) 242-0170.

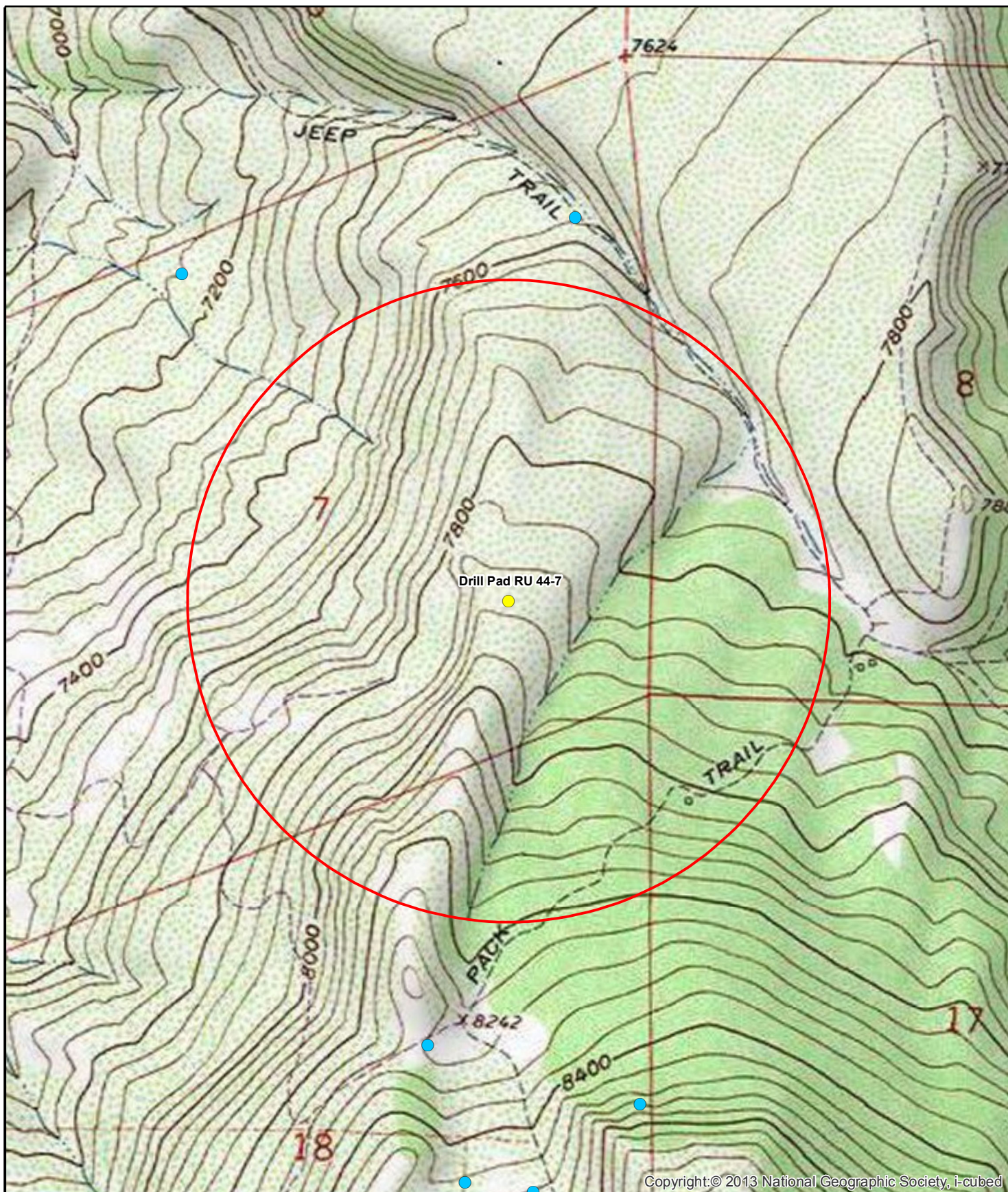
Mr. Brandon Danforth  
February 21, 2014  
Page 2

Sincerely,

A handwritten signature in black ink, appearing to read "Bruce D. Smith". The signature is fluid and cursive, with the first name "Bruce" being more legible than the last name "Smith".

Bruce D. Smith  
Principal Hydrogeologist  
WESTERN WATER & LAND, INC.





Copyright:© 2013 National Geographic Society, i-cubed

#### Legend

- Decree
- Constructed well
- Outside sources
- Drill Pad RU 44-7
- 0.5-Mile Radius Evaluation Area
- Completion Status Unknown



Feet  
990 495 0 990  
1:13,000

### Figure 1: Drill Pad RU 44-7 0.5 Mile Radius Water Source Evaluation SE1/4, SE1/4, S7, T7S, R93W, 6 PM

Garfield County, Colorado  
WPX Energy Rocky Mountain LLC  
Basemap Source: Esri ArcGIS Online



Western Water & Land, Inc.  
Applications in Earth Science