

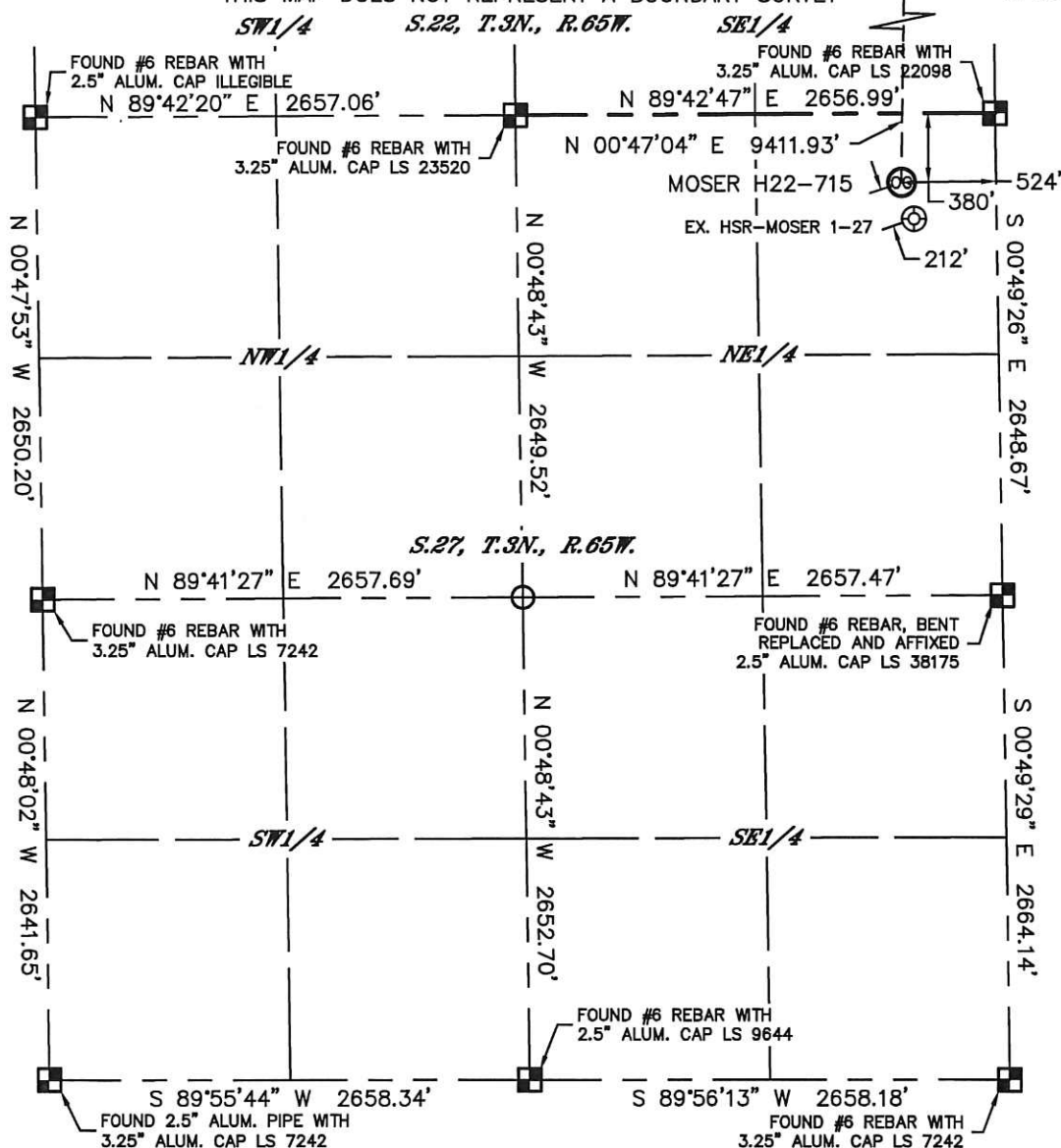


Lat40°, Inc. 1635 Foxtrail Drive, Suite 325 Loveland, CO 970-776-3321

# WELL LOCATION CERTIFICATE

SECTION: 27  
TOWNSHIP: 3N  
RANGE: 65W

THIS MAP DOES NOT REPRESENT A BOUNDARY SURVEY



In accordance with a request from Mike Rodine with Noble Energy Inc. Lat40°, Inc. has determined the surface location of the MOSER H22-715 to be 380' from the NORTH line and 524' from the EAST line as measured at right angles from the section lines of Section 27, Township 3 North, Range 65 West and the bottom hole to be 1530' from the NORTH line and 330' from the EAST line as measured at right angles from the section lines of Section 15, Township 3 North, Range 65 West of the Sixth Principal Meridian, County of Weld, State of Colorado.

I hereby state that this Well Location Certificate was prepared by me, or under my direct supervision, that the fieldwork was completed on 3/13/2014, for and on behalf of Noble Energy Inc. That this is not a Land Survey Plat or an Improvement Survey Plat, and that it is not to be relied upon for establishment of fence, building, or other future Improvement lines.

## NOTE:

- 1) Bearings shown are Grid Bearings of the Colorado State Plane Coordinate System, North Zone, North American Datum 1983/2007. The lineal dimensions as contained herein are based upon the "U.S. Survey Foot."
  - 2) Ground elevations are based on an observed GPS elevation (NAVD 1988 DATUM).
  - 3) IMPROVEMENTS: See LOCATION DRAWING for all visible improvements within 500' of disturbed area.
  - 4) SURFACE USE: OLD CROP LAND
  - 5) INSTRUMENT OPERATOR: BRIAN ROTTINGHAUS
  - 6) NEAREST EXISTING WELL: HSR-MOSER 1-27, 212' SE
- NEAREST CULTURAL ITEMS:  
BUILDING: ±1810' NE  
BUILDING UNIT: ±1810' NE  
HIGH OCCUPANCY BUILDING UNIT: 5280'+  
DESIGNATED OUTSIDE ACTIVITY AREA: 5280'+  
PUBLIC ROAD: 366' N (CR 30)  
ABOVEGROUND UTILITY: 344' N  
RAILROAD: 5280'+  
PROPERTY LINE: 380' N

**SURFACE LOCATION**  
LAT: 40.20259N  
LONG: 104.64212W  
PDOP: 1.9  
ELEV: 4812'  
1/4, 1/4: NENE

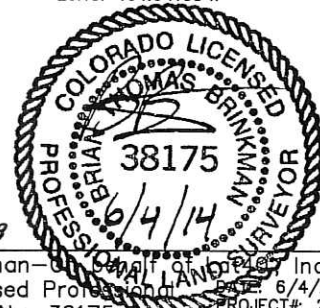
**BOTTOM HOLE**  
LAT: 40.22841N  
LONG: 104.64133W

## LEGEND

- = ALIQUOT MONUMENT AS DESCRIBED
- = CALCULATED POSITION

## SHEET 1 OF 3

Brian T. Brinkman—Owner of Lat40°, Inc.  
Colorado Licensed Professional Land Surveyor  
Land Surveyor No. 38175  
DATE: 6/4/2014  
PROJECT#: 2013178



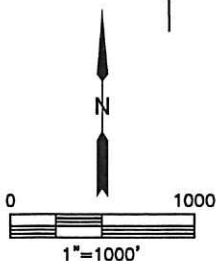
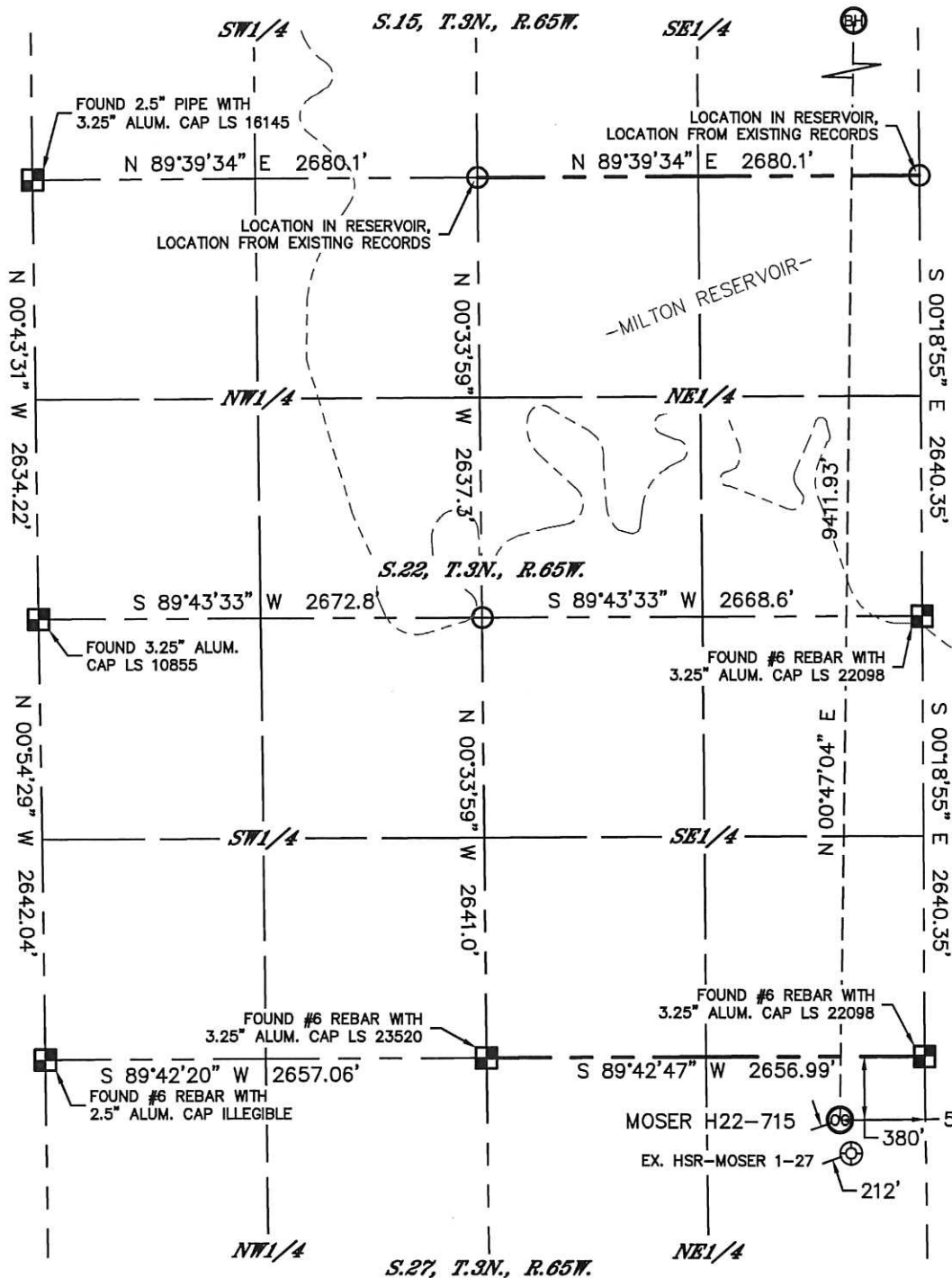


Lat40°, Inc. 1635 Foxtrail Drive, Suite 325 Loveland, CO 970-776-3321

# WELL LOCATION CERTIFICATE

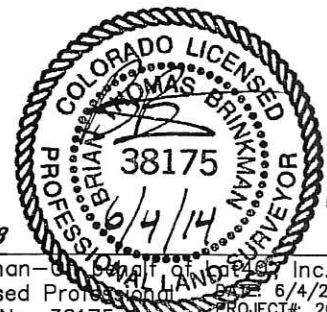
THIS MAP DOES NOT REPRESENT A BOUNDARY SURVEY

SECTION: 27  
TOWNSHIP: 3N  
RANGE: 65W



## LEGEND

- - ALIQUOT MONUMENT AS DESCRIBED
- - CALCULATED POSITION



SHEET 2 OF 3

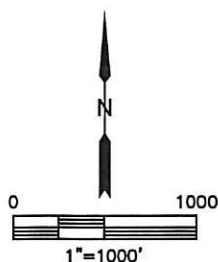
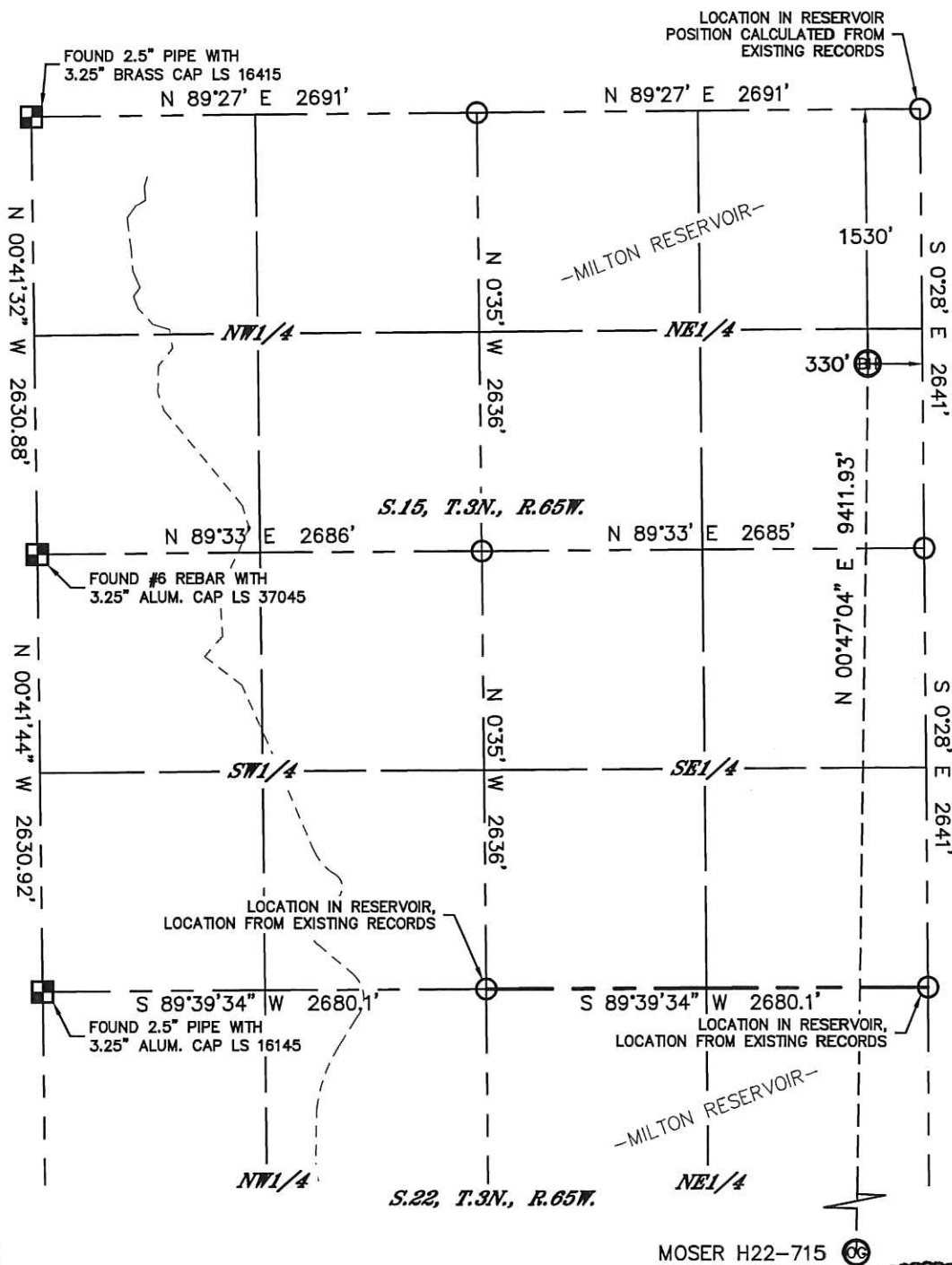
Brian T. Brinkman - Owner of Lat40°, Inc.  
Colorado Licensed Professional Land Surveyor No. 38175  
PROJECT#: 2013178

Lat40°, Inc. 1635 Foxtrail Drive, Suite 325 Loveland, CO 970-776-3321


# WELL LOCATION CERTIFICATE

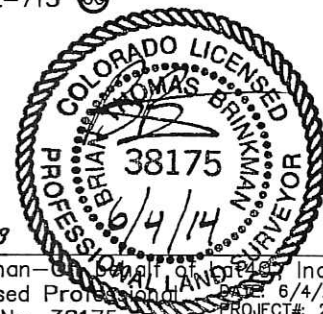
THIS MAP DOES NOT REPRESENT A BOUNDARY SURVEY

SECTION: 27  
TOWNSHIP: 3N  
RANGE: 65W



### LEGEND

-  = ALIQUOT MONUMENT AS DESCRIBED  
 = CALCULATED POSITION



***SHEET 3 OF 3***

Brian T. Brinkman—of the firm of btb487, Inc.  
Colorado Licensed Professional Surveyor No. 38175  
DATE: 6/4/2014  
PROJECT#: 2013178

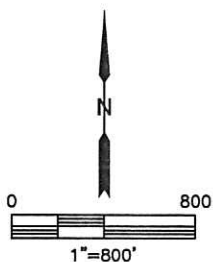
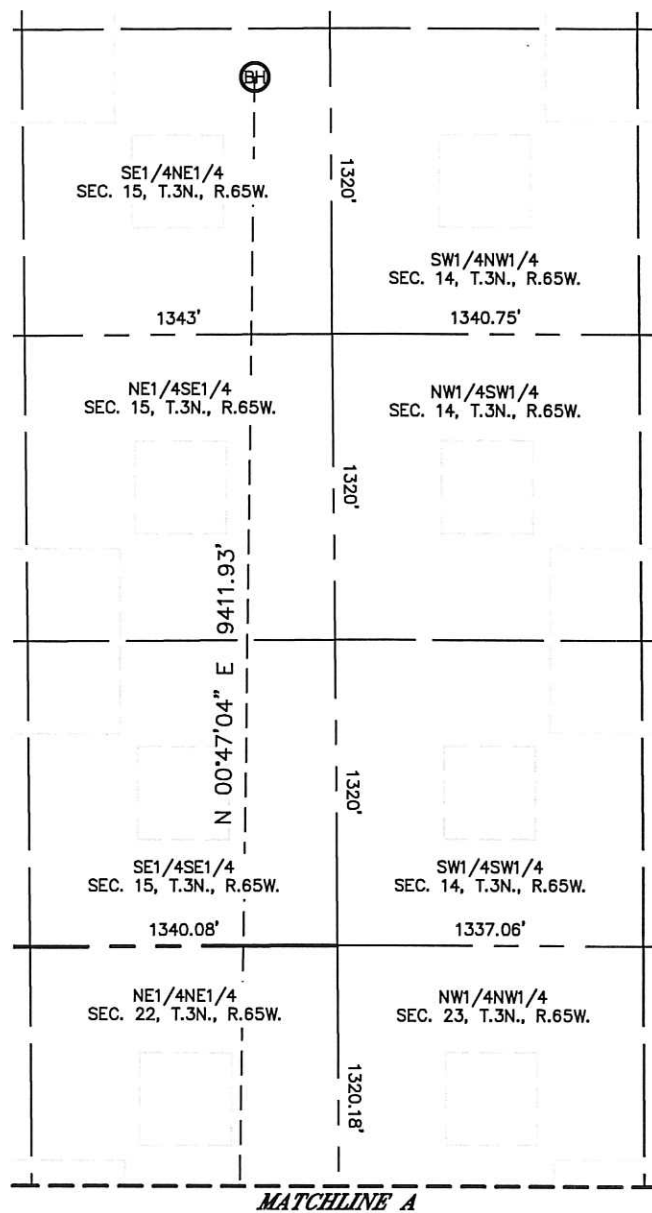
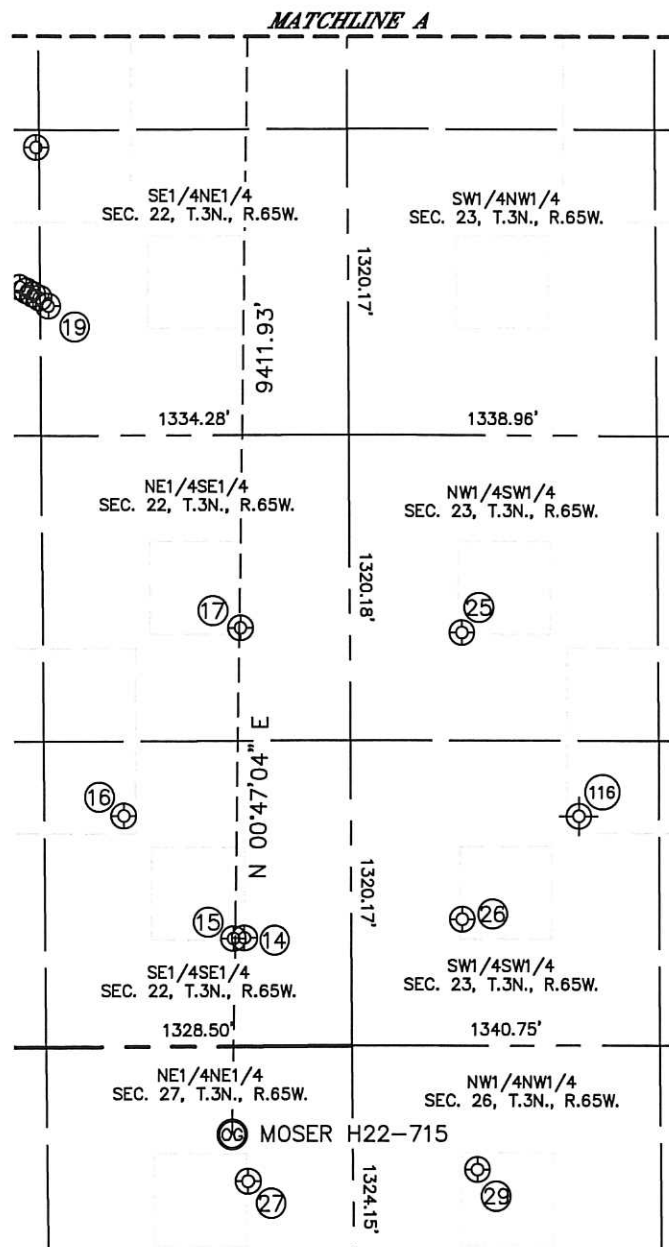


Lat40°, Inc. 1635 Foxtrail Drive, Suite 325 Loveland, CO 970-776-3321

## SITE SKETCH

MOSER H22-715

SECTION: 27  
TOWNSHIP: 3N  
RANGE: 65W



*SHEET 1 OF 2*

DATE: 6/4/2014  
PROJECT#: 2013178



Lat40°, Inc. 1635 Foxtrail Drive, Suite 325 Loveland, CO 970-776-3321

## SITE SKETCH

MOSER H22-715

SECTION: 27  
TOWNSHIP: 3N  
RANGE: 65W

WELL NO.	WELL NAME	SHL FOOTAGE				SHL LAT°	SHL LONG°	PDOP	ELEV (FT.)	1/4/1/4
14	SARCHET 16-22	468	FSL	465	FEL	40.20492	-104.64190	3.0	4811	SESE
15	SARCHET 37-22	466	FSL	512	FEL	40.20491	-104.64207	2.9	4812	SESE
16	HSR-DURYEA 16-22	997	FSL	984	FEL	40.20638	-104.64376	2.8	4807	SESE
17	HSR-DEMEULES 9-22	1808	FSL	474	FEL	40.20859	-104.64192	2.7	4809	NESE
19	FRICO 24-22	2079	FNL	1301	FEL	40.21243	-104.64486	3.6	4810	SENE
25	UPRC 23-12J	1785	FSL	484	FWL	40.20851	-104.63849	2.9	4807	NWSW
26	UPRC H23-13	546	FSL	481	FWL	40.20512	-104.63852	2.1	4811	SWSW
27	HSR-MOSER 1-27	581	FNL	458	FEL	40.20204	-104.64188	3.0	4812	NENE
29	HSR-MOSER 4-26	534	FNL	538	FWL	40.20215	-104.63831	2.9	4816	NWNW
116	UPRR 53 PAN AMB #1 (P/A)	990	FSL	990	FWL	40.20629	-104.63645	N/A	4806	SWSW

NOTE: THE ABANDONED WELL DATA SHOWN IN RED ABOVE WAS OBTAINED FROM COGCC SCOUT CARDS.

*SHEET 2 OF 2*

DATE: 6/4/2014  
PROJECT#: 2013178