

LOCATION DRAWING

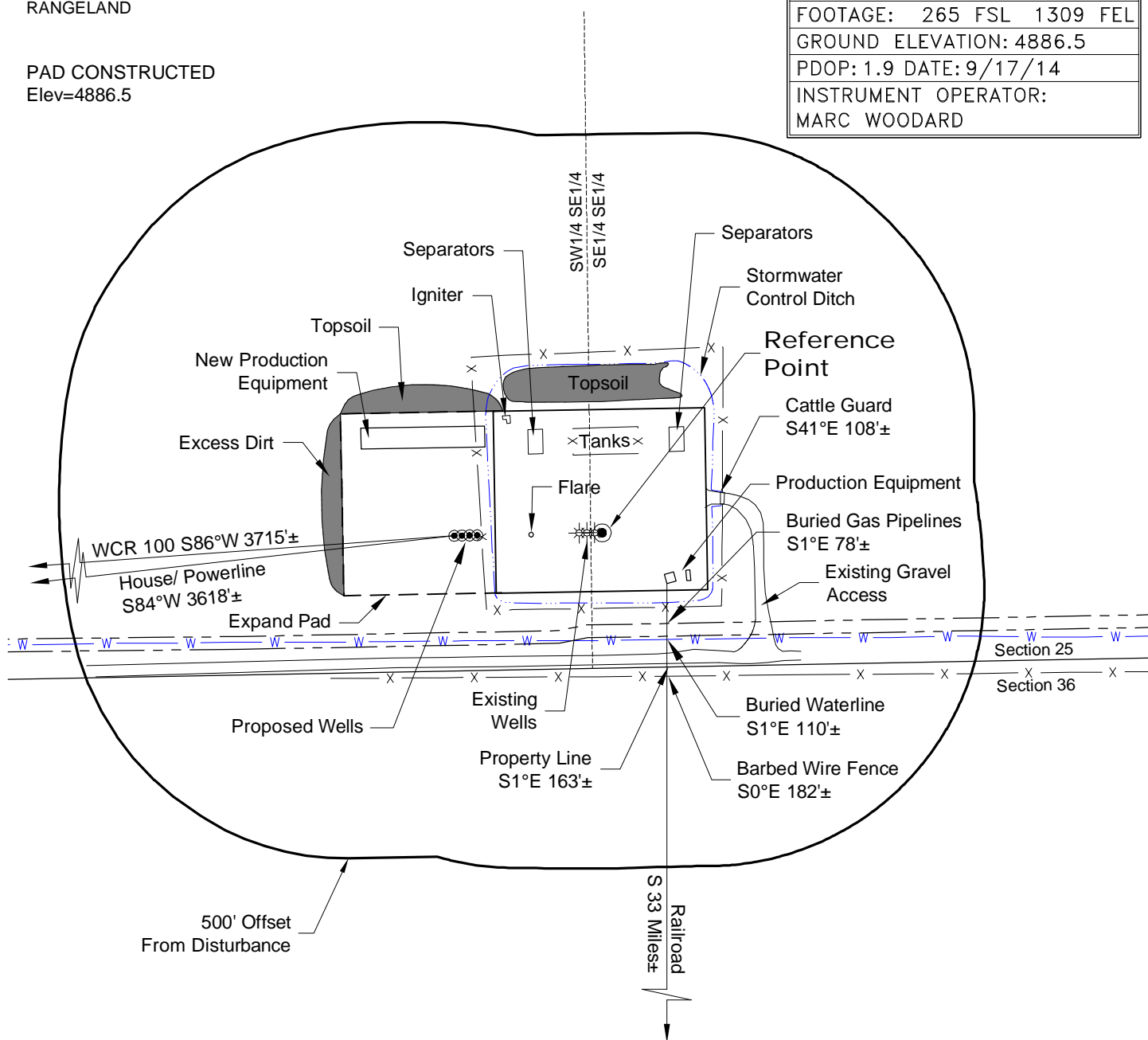
PLANT COMMUNITY:
DISTURBED GRASSLAND

SURFACE USE:
RANGELAND

PAD CONSTRUCTED
Elev=4886.5

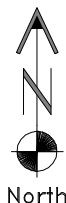
REFERENCE POINT

LATITUDE: 40.71469
LONGITUDE: -104.03506
FOOTAGE: 265 FSL 1309 FEL
GROUND ELEVATION: 4886.5
PDOP: 1.9 DATE: 9/17/14
INSTRUMENT OPERATOR: MARC WOODARD



NOTE:
ALL PRODUCTION FACILITIES WILL BE ON PAD.

9/23/14



North

0 300 600

Graphic Scale in Feet
1" = 300'



LAND SURVEYING AND MAPPING
LAFAYETTE - WINTER PARK
Ph 303 666 0379 Fx 303 665 6320

CARRIZO NIOBRARA LLC
SHULL 1-25-9-60 PAD

SE1/4 SE1/4 SECTION 25 T9N R6W
6th PM WELD COUNTY COLORADO