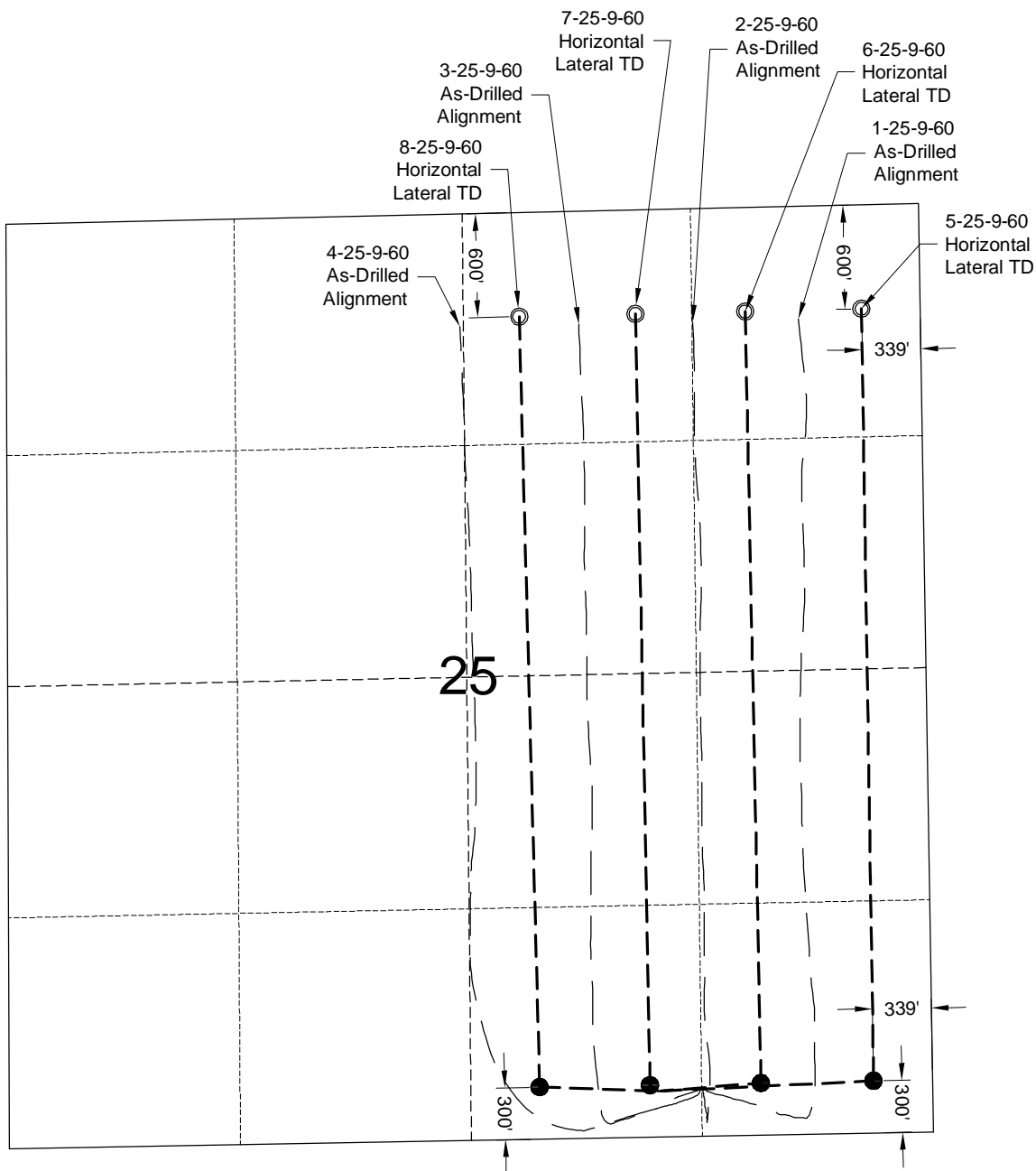


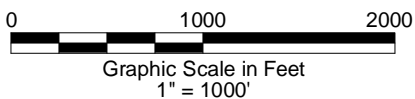
# MULTI-WELL PLAN



State-Husky 1

- ⊕ P&A Well
- Landing Point
- Horizontal Lateral TD

9/23/14



LAND SURVEYING AND MAPPING  
 LAFAYETTE - WINTER PARK  
 Ph 303 666 0379 Fx 303 665 6320

**CARRIZO NIOBRARA LLC**  
 SHULL 1-25-9-60 PAD

**SE1/4 SE1/4 SECTION 25 T9N R6W**  
**6th PM WELD COUNTY COLORADO**