



Scale: 5" / 100'  
Measured Depth Log

Well Name BAREFOOT 31C-25HZ

Location SEC 25, T3N, R68W

State COLORADO

Country USA

API Number 051233919100

Region DJ BASIN

Spud Date 8/8/2014

Surface Coordinates 599' FNL & 514' FEL  
40.202906 -104.943613

Bottom Hole Coordinates 1405' FNL & 50' FWL  
40.200507 -104.960434

Ground Elevation 4891'

Logged Interval 6923'

Formation CODELL

Type of Drilling Fluid FNSL

K.B. Elevation 4908'

To 13056'

Total Depth 13056'

County WELD

Rig Number XTREME 8

AFE # 2092744

Field WATTENBERG

Drilling Completed 8/14/2014

Company ANADARKO PE

Address 1099 18th St, Su  
Denver , CO 802

Name SHANA SWIRIN

Company COLUMBINE LC

Address 2385 S. Lipan St  
Denver, CO 802





Slide/Rotate

Columbine Logging Two Person  
Rigged Up 1400hrs 08/09/2014

ROP

ROF

GAMMA

ROF (ft/hr)

ROP (ft/hr)

Logging Started @  
0200hrs on 08/10/2014  
at 6923' MD

WT 10.1 / VIS 41

WT 10.1 / VIS 42

Total Gas & Chromatograph

GAS

C1

C2

C3

C4

Bit Data

Bit #: 02  
Type: SMITH SD1611  
Size: 8.75  
Depth In: 1,411.  
Depth Out: 7,894.  
Jets: 6x16  
S/N: JU5999

Depth Labels

% Lith

Well Bore  
TVD

Acetone was used as the cutting agent with the dimple filled to the rim  
The ratings are based on 7 descriptors:  
None, Slight trace, Trace, Fair, Moderate, Good, and Excellent. The descriptor used is based on the loggers observations and best judgement of brilliance, color and longevity of the cut.

Oil Show

Images

700

70000

6,900

6,950

7,000

700

70000

GAS (units)

C1-C4 (PPM)

349u

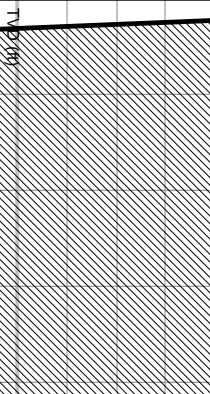
372u

354u

423u

Begin in Sussex Formation

6600



MD: 6,934  
TVD: 6,648.92  
Inclination: 9.1  
Azimuth: 268.36  
VS: -1,251.76

MD: 6,977  
TVD: 6,690.96  
Inclination: 15.04  
Azimuth: 264.55  
VS: -1,242.78

MD: 7,019  
TVD: 6,731.15  
Inclination: 18.6  
Azimuth: 262.98  
VS: -1,230.67

SL TY SH: lt-med gy, sb pty-sb blkY, mod sft-firm, mod srt, v c grs, sb md-sb ang, mod fr, sting bl cut, dul yel ring

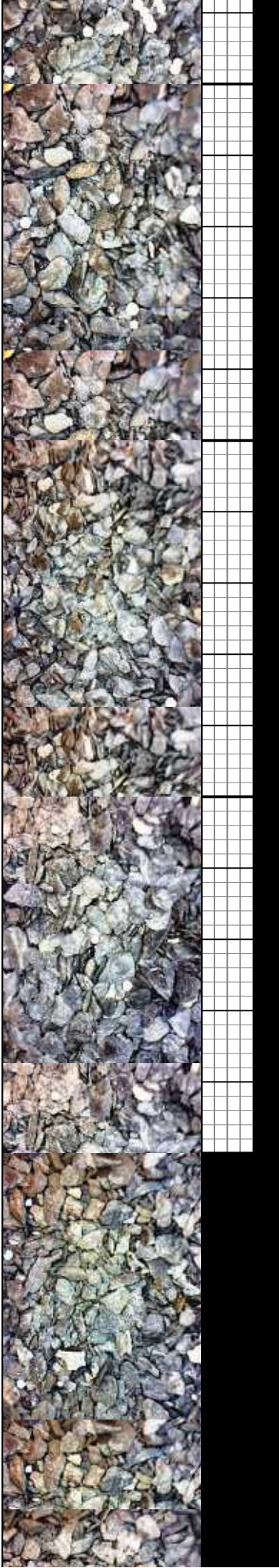
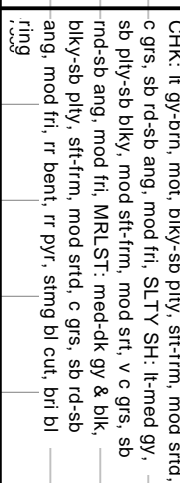
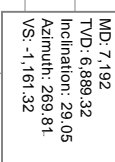
SL TY SH: lt-med gy, sb pty-sb blkY, mod sft-firm, mod srt, v c grs, sb md-sb ang, mod fr, sting bl cut, dul yel ring

SL TY SH: lt-med gy, sb pty-sb blkY, mod sft-firm, mod srt, v c grs, sb md-sb ang, mod fr, sting bl cut, dul yel ring

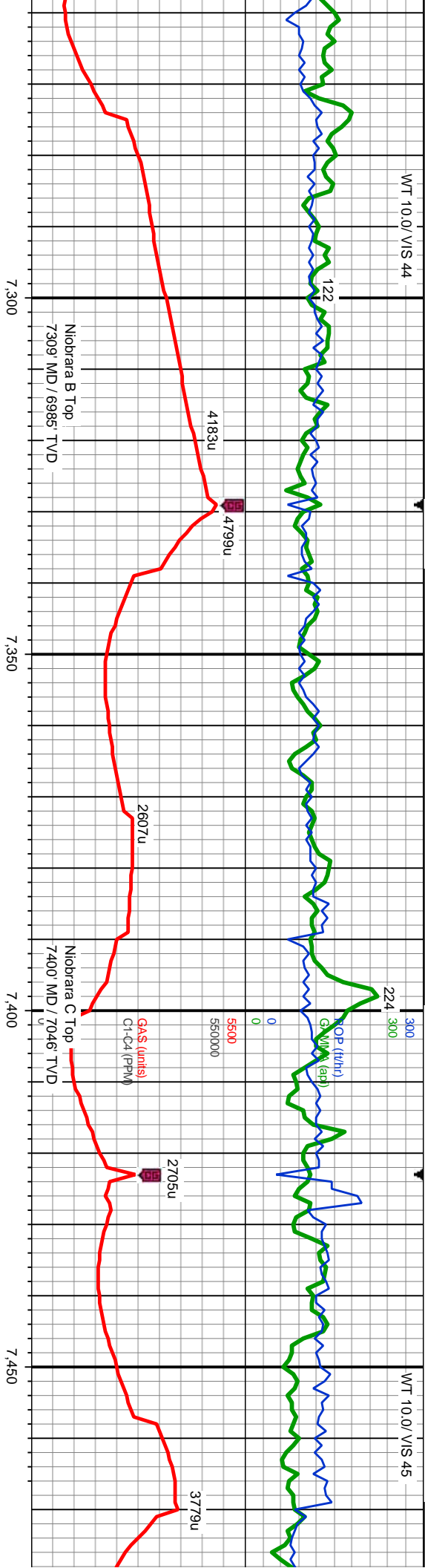
ST  
FM  
CE











MD: 7,277.  
TVD: 6,960.45  
Inclination: 37.2  
Azimuth: 270.21  
VS: -1,114.94

-dk gy-brn, mot, blk-y-sb ply, stf-frm, mod  
 -grs, sb rd-sb ang, mod fri, MRLST: med-dk  
 -g, blk-y-sb ply, stf-frm, mod strd, c grs, sb  
 -ng, mod fri, tr stly sh, rr bent, stmg bl cut,

CHK: It-ok gy-brn, mot, biky-sb ply, stf-frm, mod  
strd, c grs, sb rd-sb ang, mod fri, MRST: med-dk  
gy & blk, biky-sb ply, stf-frm, mod strd, c grs, sb  
rd-sb ang, mod fri, simg bl cut, bri bl ring

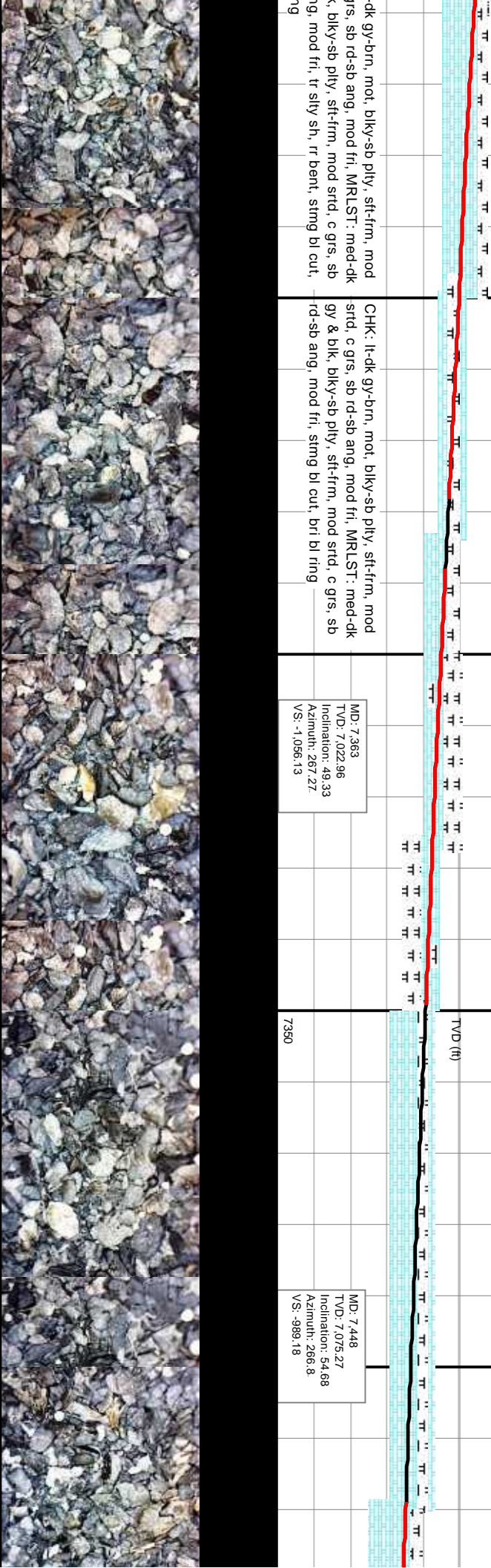
CHK: med-dk gy-bm, mot, bky-sb ply, stf-fm,  
mod strd, c gys, sb rd-sb ang, mod fri, MRST:  
med-dk gy & bky, bky-sb ply, stf-fm, mod strd, c  
gys, sb rd-sb ang, mod fri, occ calc incl, occ  
bent, sting bi cut, bri bi ring

CHK: lt-med gy-brn, crm, mot, blk-y-sb ply, stf-firm  
mod strd, c gis, sb rd-sb ang, mod fri, MRLST: -  
med-ck gy & blk, blk-y-sb ply, stf-firm, mod strd, o  
gis, sb rd-sb ang, mod fri, stmg bl cut, bri bl ring

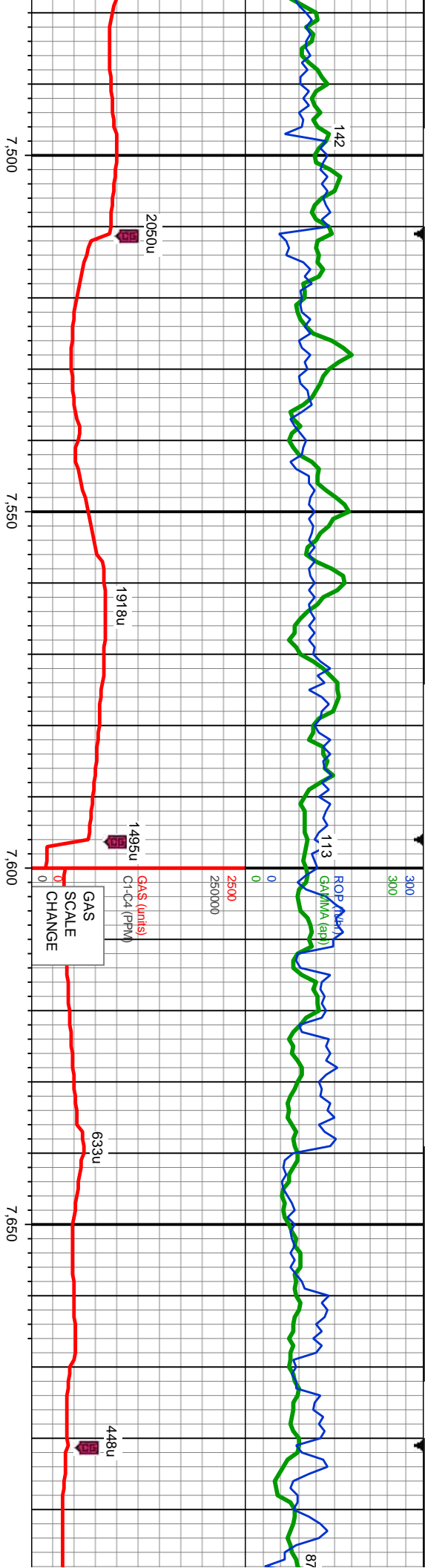
CHK: It-med gy-brn, crm, mod srt'd, med-c grs, sb rd-sl  
MLST: med-dk gy & blk, blk  
mod srt'd, c grs, sb rd-sb ang  
cut, bri bl ring

MD: 7,363  
TVD: 7,022.96  
Inclination: 49.33  
Azimuth: 267.27  
VS: -1,056.13

MD: 7,448	
TVD: 7,075.27	
Inclination: 54.68	
Azimuth: 266.8	
VS: -989.18	







7,500 7,550 7,600 7,650

CHK: med-dk gy-brn, crm, mot, blk-y-sb pily, sft-frn, sft-frn, mod strd, med-c grs, sb rd-sb ang, mod fri, MRLST: med-dk gy & blk, blk-y-sb pily, sft-frn, mod strd, c grs, sb rd-sb ang, mod fri, sting bl cut, bri bl ring

CHK: lt-med gy-brn, mot, blk-y-sb pily, sft-frn, mod strd, med-c grs, sb rd-sb ang, mod fri, MRLST: med-dk gy & blk, blk-y-sb pily, sft-frn, mod strd, c grs, sb rd-sb ang, mod fri, sting bl cut, bri bl ring

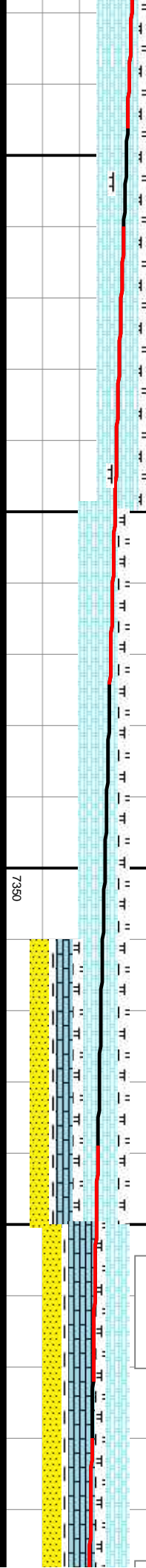
CHK: lt-med gy-brn, crm, mot, blk-y-sb pily, sft-frn, mod strd, med-c grs, sb rd-sb ang, mod fri, MRLST: med-dk gy & blk, blk-y-sb pily, sft-frn, mod strd, c grs, sb rd-sb ang, mod fri, sting bl cut, dul bl ring

LMST: oftwht-crm, bf, mod sft-mod nd, sb blk-y-sb pily, w strd, med grs, CHK: lt-med gy-brn, crm, mot, blk-y-sb pily, sft-frn, mod strd, med-c grs, sb rd-sb ang, mod fri, MRLST: med-dk gy & blk, blk-y-sb pily, sft-frn, mod strd, c grs, sb rd-sb ang, mod fri, sting bl cut, dul bl ring

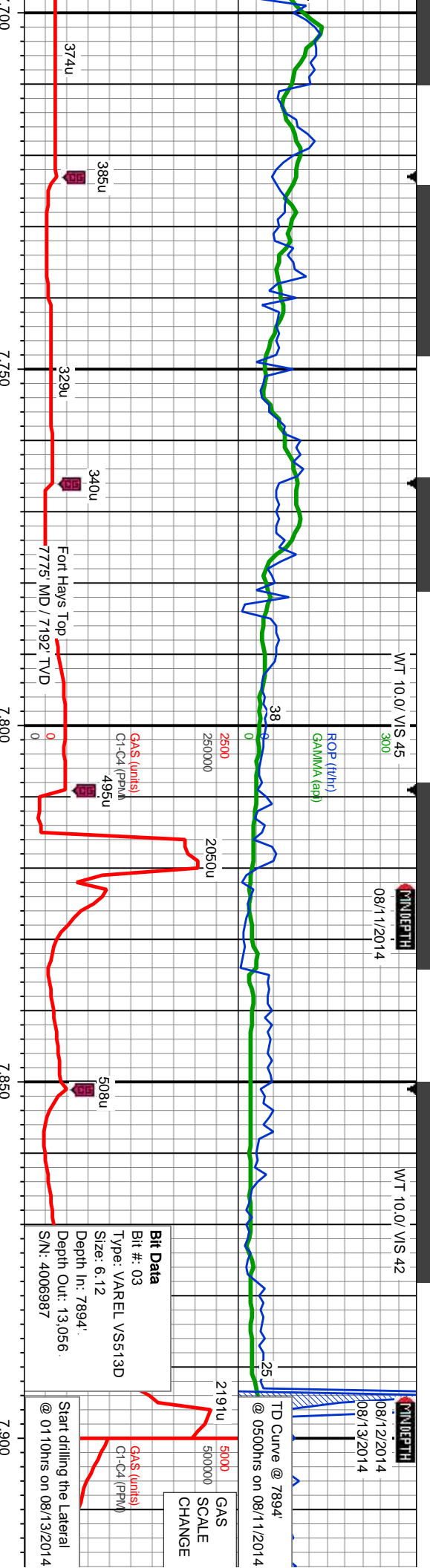
MD: 7,533  
TVD: 7,119.52  
Inclination: 62.52  
Azimuth: 263.94  
VS: -916.77

MD: 7,619  
TVD: 7,154.53  
Inclination: 69.41  
Azimuth: 264.82  
VS: -836.43

MD: 7,661  
TVD: 7,168.33  
Inclination: 72.22  
Azimuth: 266.55  
VS: -798.8







**Bit Data**

Bit #: 03  
Type: VAREL VS513D  
Size: 6.12  
Depth In: 7894'  
Depth Out: 13,056'  
S/N: 4006987

**GAS (units)  
Ct-C4 (ppm)**

**GAS (units)  
Ct-C4 (ppm)**

Start drilling the Lateral  
@ 0110hrs on 08/13/2014

LMST: oftwht-crm, bf, mod sft-mod hd, sb blk-ym  
ply, w strd, med grs, CHK: lt-med gy-brn, crm, —  
mod, blk-ym ply, sft-frm, mod strd, med-c grs, sb  
rd-sb ang, mod fri, MRLST: med-dk gy & blk, —  
blk-ym ply, sft-frm, mod strd, c grs, sb rd-sb  
ang, mod fri, sting bl cut, dul bl ring

LMST: oftwht-crm, bf, mod sft-mod hd, sb blk-ym  
ply, w strd, med grs, MRLST: med-dk gy & blk, —  
blk-ym ply, sft-frm, mod strd, c grs, sb rd-sb  
ang, mod fri, sting bl cut, dul bl ring

LMST: oftwht-crm, bf, mod sft-mod hd, sb blk-ym  
ply, w strd, med grs, SH: blk-dk gy, sb ply-pty, —  
mod sft-frm, mod strd, med grs, sting bl cut, dul  
bl ring

LMST: oftwht-crm, bf, mod sft-mod hd, sb blk-ym  
ply, w strd, med grs, SH: blk-dk gy, sb ply-pty, —  
mod sft-frm, mod strd, med grs, sting bl cut, dul  
bl ring

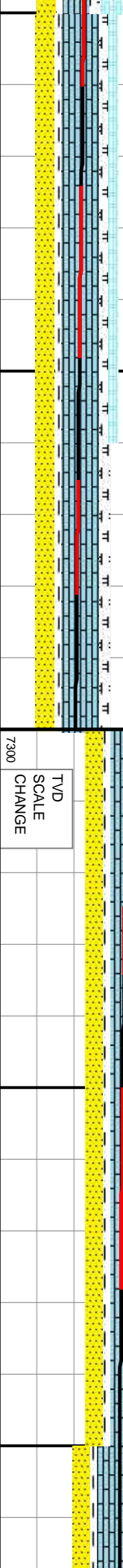
MD: 7703  
TVD: 7,179.46  
Inclination: 77.05  
Azimuth: 268.63  
VS: -758.32

MD: 7746  
TVD: 7,187.87  
Inclination: 80.38  
Azimuth: 269.33  
VS: -716.16

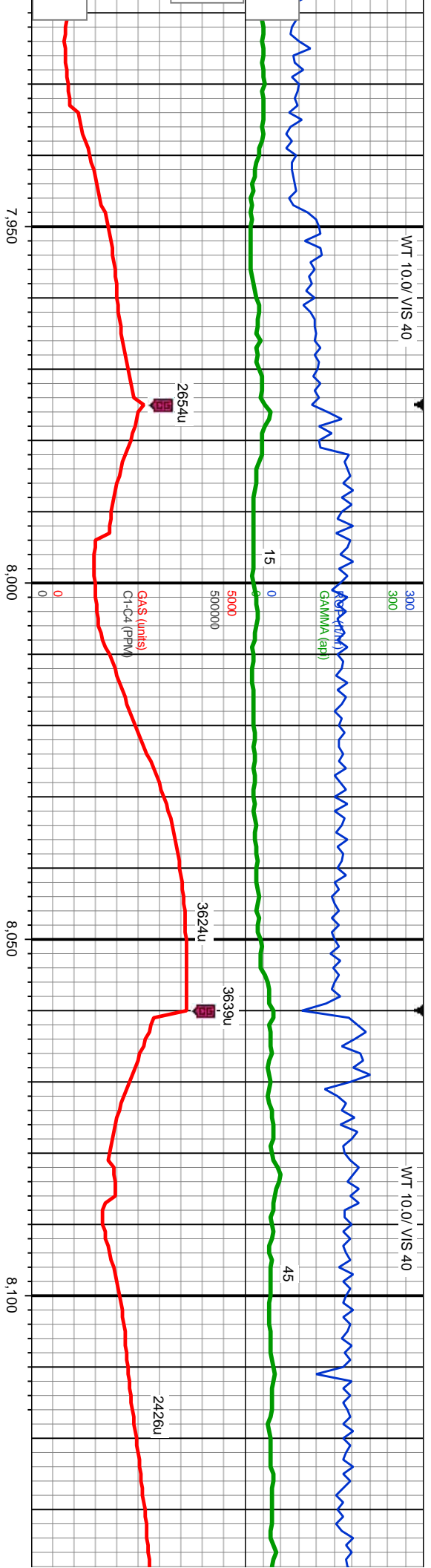
MD: 7789  
TVD: 7,194.28  
Inclination: 82.49  
Azimuth: 269.3  
VS: -673.66

MD: 7830  
TVD: 7,198.66  
Inclination: 85.22  
Azimuth: 269.36  
VS: -632.91

MD: 7907  
TVD: 7,202.5  
Inclination: 89.07  
Azimuth: 267.94  
VS: -556.02







LMST: offwht-dk crm, bf, mod sft-mod hd, sb  
biky-sb pty, w strd, med grs, tr SH, sting bl cut,  
dul bl ring

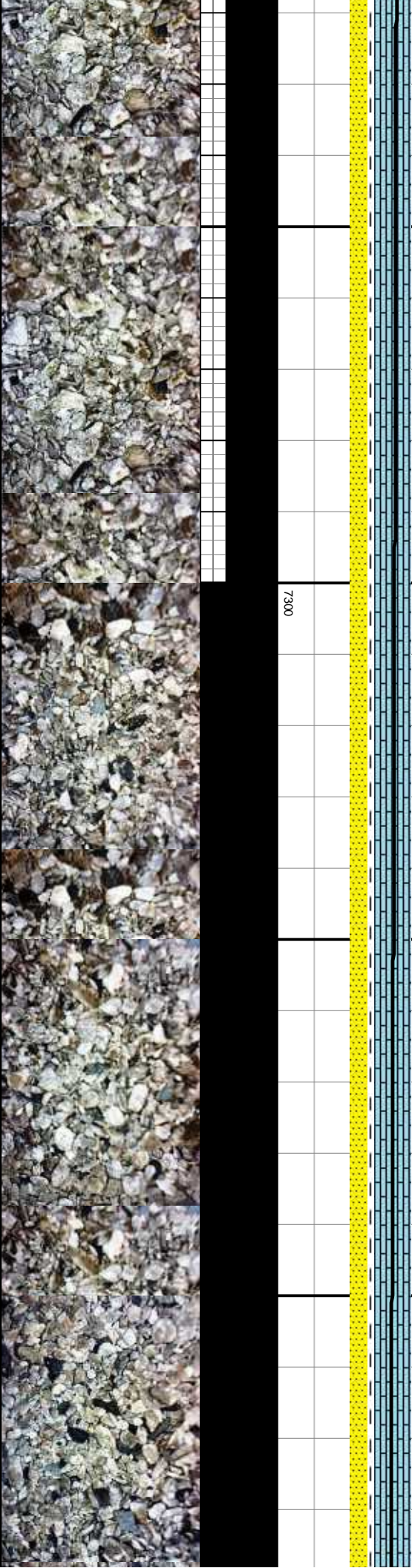
MD: 7.992  
TVD: 7,203.86  
Inclination: 89.1  
Azimuth: 270.71  
VS: -471.07

TVD (ft)

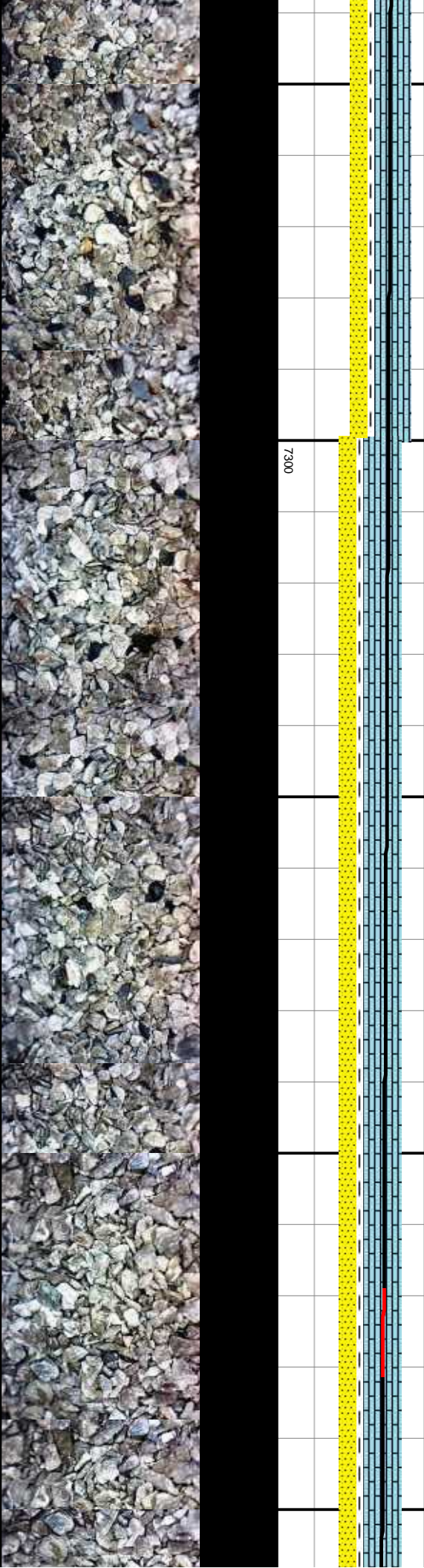
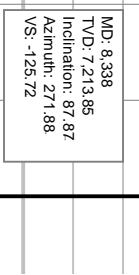
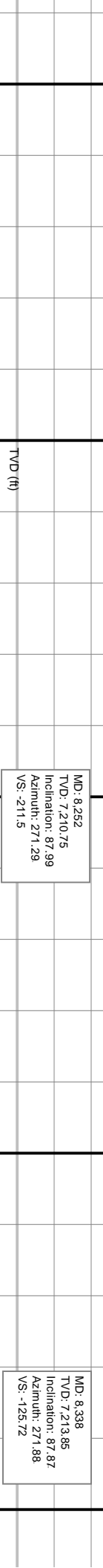
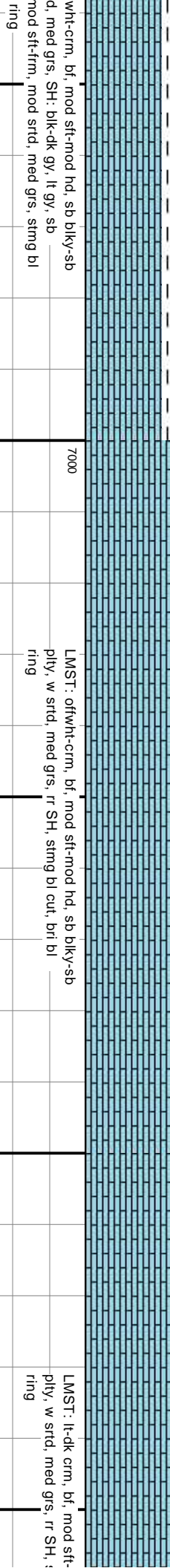
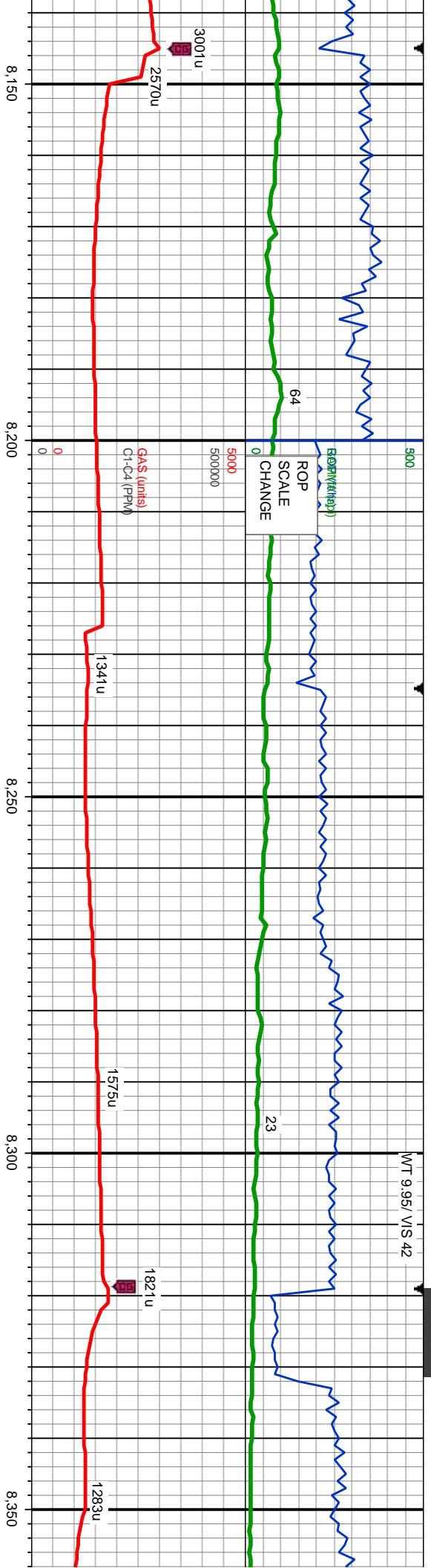
LMST: offwht-erm, bf, mod sft-mod hd, sb biky-sb  
pty, w strd, med grs, SH: blk-dk gy, lt gy, sb  
pty-pty, mod sft-fm, mod strd, med grs, sting bl  
cut, bri bl ring

MD: 8.077  
TVD: 7,205.56  
Inclination: 88.61  
Azimuth: 270.7  
VS: -386.18

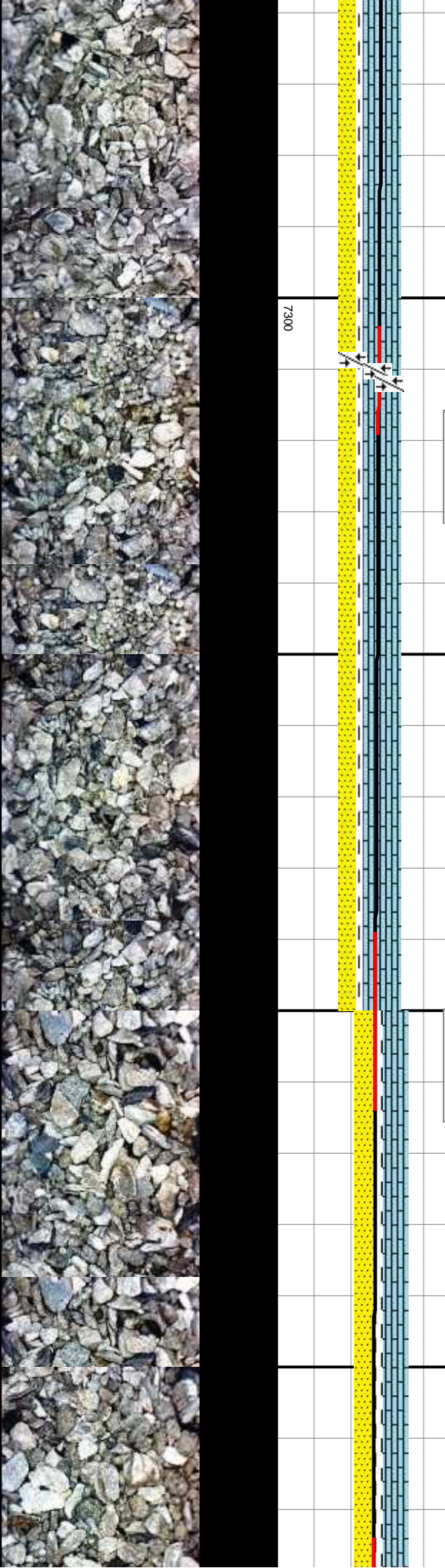
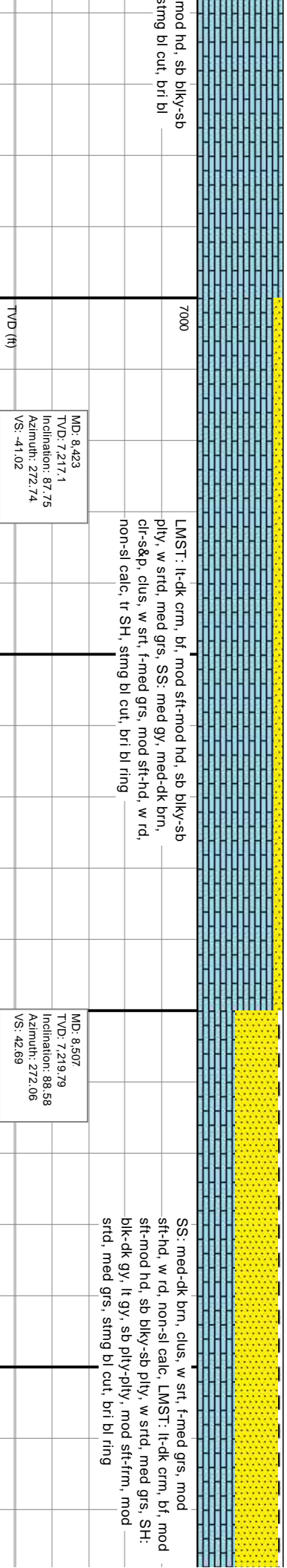
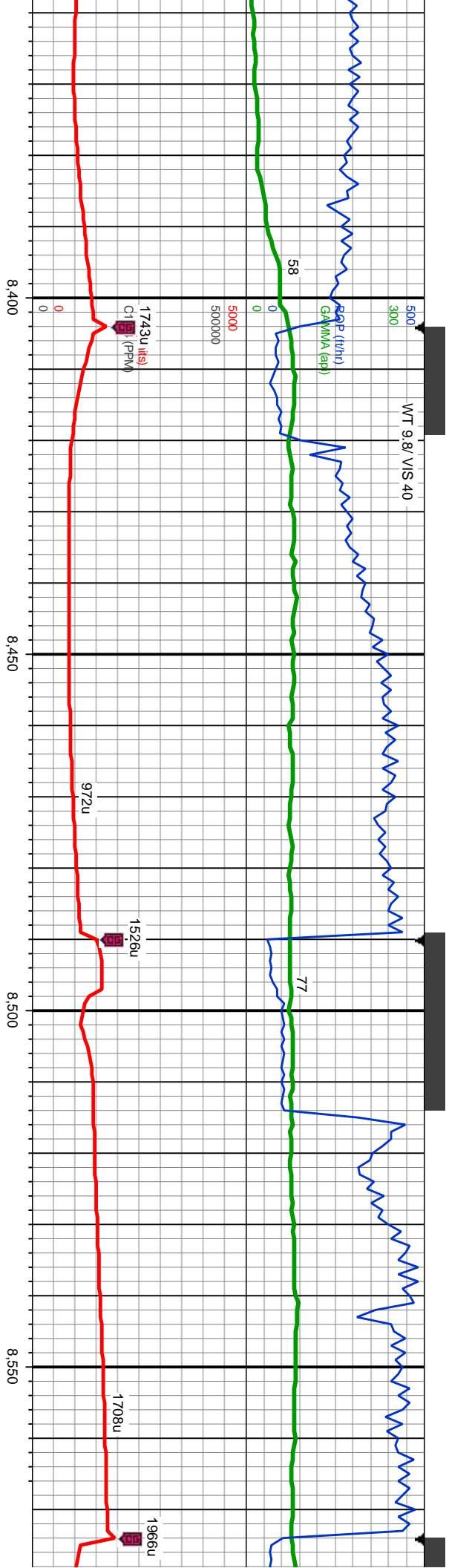
LMST: off  
pty, w str  
pty-pty,  
cut, bri bl



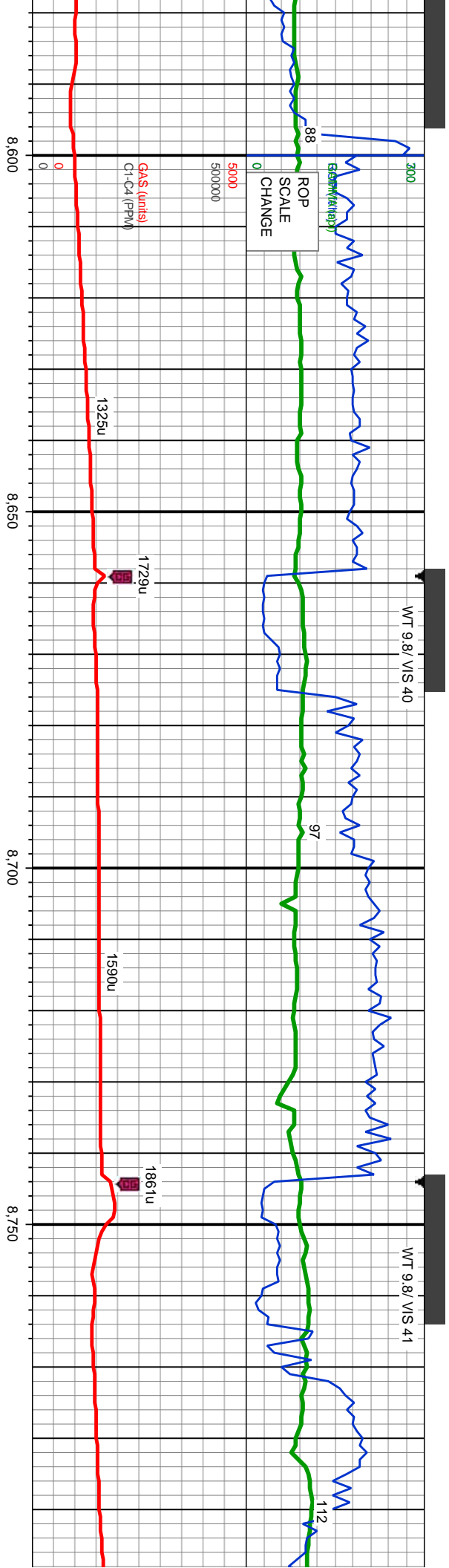












MD: 8.593  
TVD: 7,221.07  
Inclination: 89.72  
Azimuth: 272.08  
VS: 128.46

TVD (ft)

SS: med-dk brn, clus, w srt, f-med grs, mod  
sft-hd, w rd, non-sl calc, LMST: lt-dk crm, bf, mod  
sft-mod hd, sb blk-y-sb pty, w strd, med grs, SH:  
blk-dk gy, lt gy, sb pty-pty, mod sft-frm, mod  
strd, med grs, sting bl cut, bri bl ring

MD: 8.678  
TVD: 7,221.21  
Inclination: 90.09  
Azimuth: 270.81  
VS: 213.3

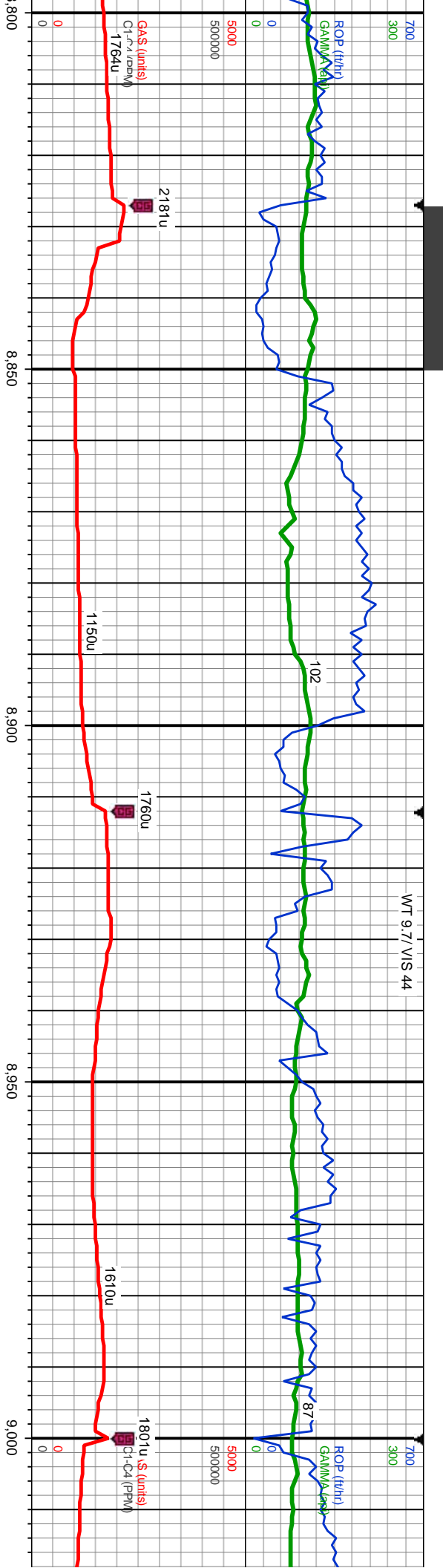
SS: med-dk brn, clr-s&p, clus, w srt, vt-f grs,  
mod sft-hd, w rd, non-sl calc, SH: lt-dk gy, sb  
pty-pty, mod sft-frm, mod strd, f-med grs, tr LS,  
sting bl cut, bri bl ring

MD: 8.761  
TVD: 7,221.79  
Inclination: 89.1  
Azimuth: 269.34  
VS: 296.24

7300







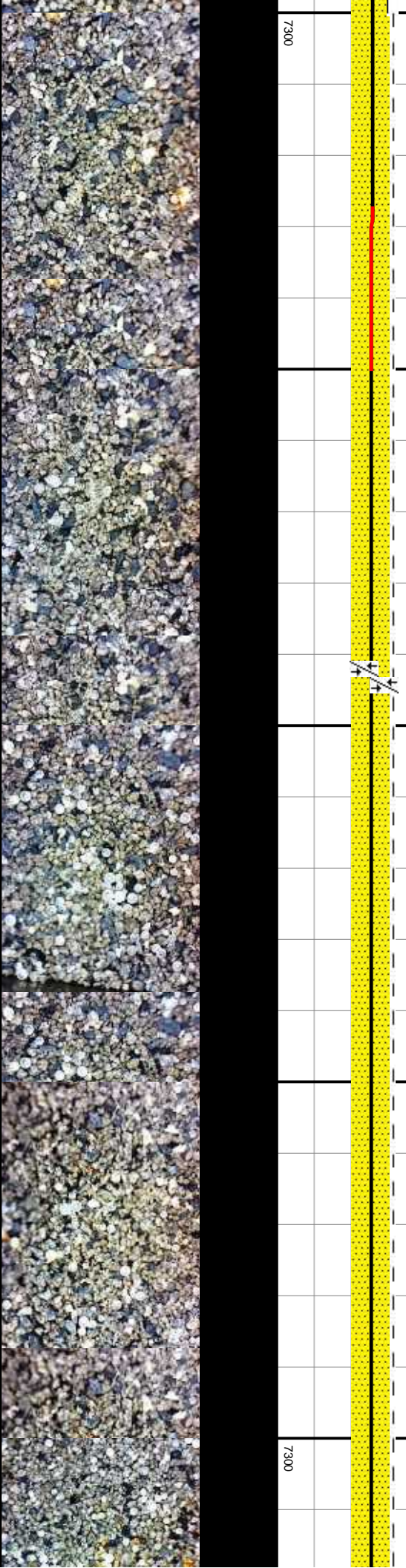
SS: med-dk brn, cl-s&p, clus, lse lith, w srt, vf-f  
grs, mod sft-hd, w rd, non-sl calc, SH: lt-dk gy, sb  
ply-pty, mod sft-firm, mod srt, f-med grs, rr LS,  
stng bl cut, bri bl ring

MD: 8.847  
TVD: 7,222.87  
Inclination: 89.47  
Azimuth: 267.87  
VS: 382.23

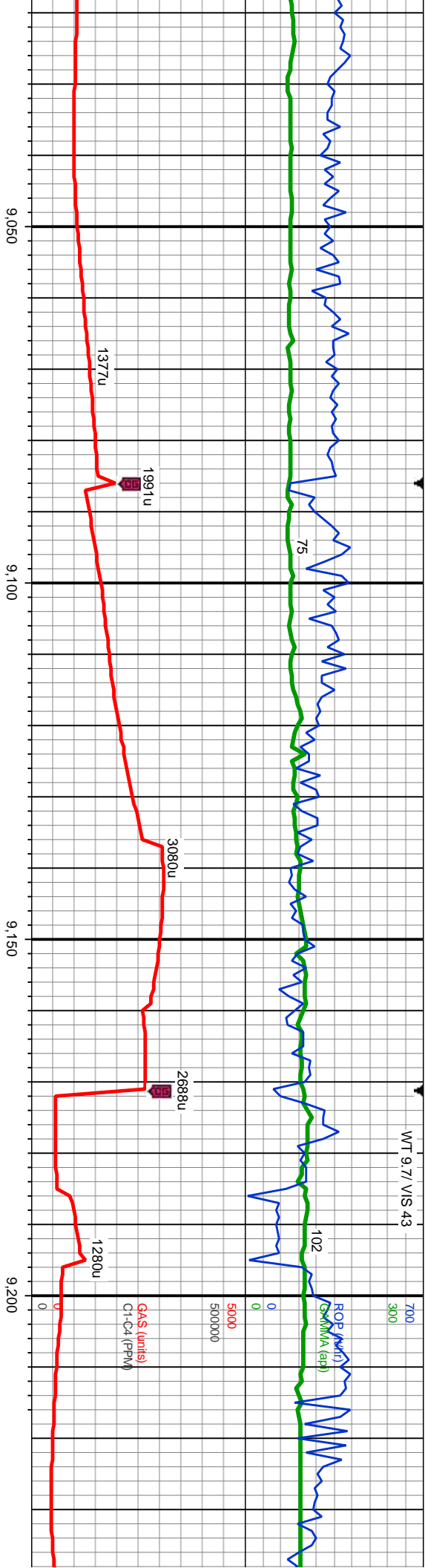
SS: med-dk brn, cl-s&p, clus, lse lith, w srt, vf-f  
grs, mod sft-hd, w rd, non-sl calc, SH: lt-dk gy, sb  
ply-pty, mod sft-firm, mod srt, f-med grs, rr LS,  
stng bl cut, bri bl ring

MD: 8.932  
TVD: 7,223.11  
Inclination: 90.21  
Azimuth: 268.58  
VS: 467.23

MD: 9.017  
TVD: 7,222  
Inclination  
Azimuth: 2  
VS: 562.22







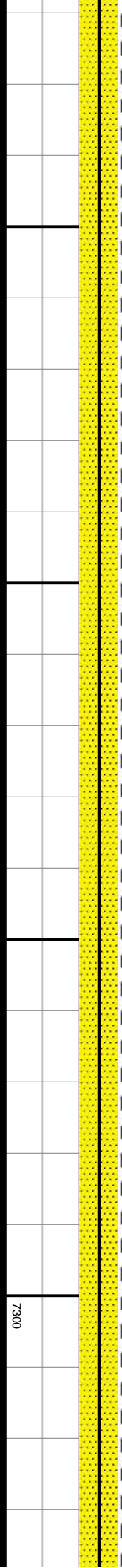
SS: med-dk brn, clr-s&p, clus, lse lith, w srt, vf-f  
grs, mod sft-hd, w rd, non-sl calc, rr SH, string bl  
cut, bri bl ring

MD: 9.105  
TVD: 7.223.1  
Inclination: 89.75  
Azimuth: 268.09  
VS: 640.22

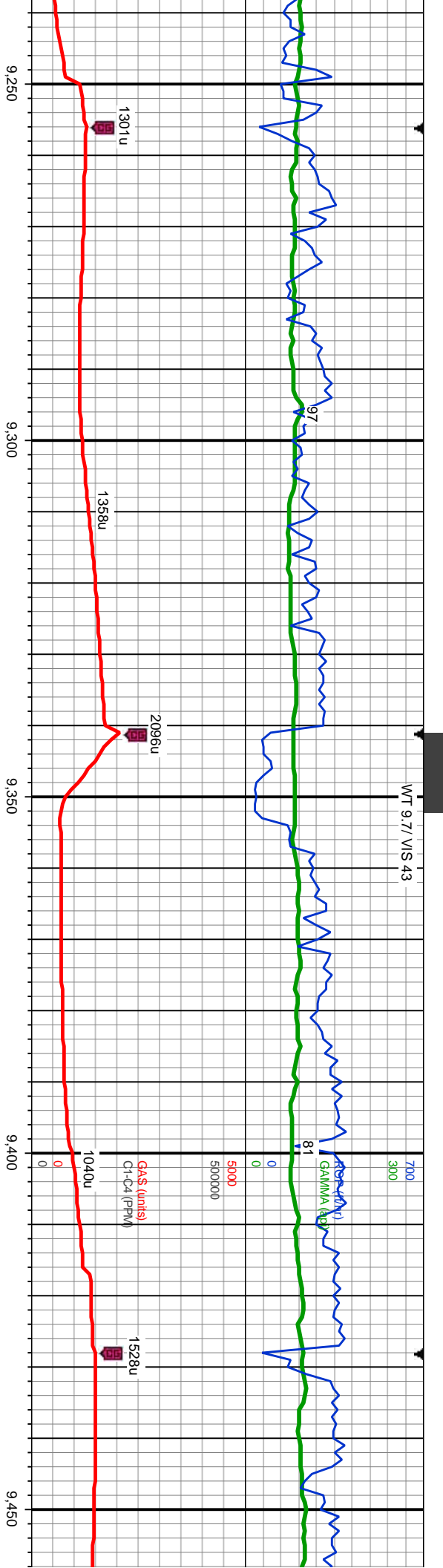
SS: med-dk brn, clr-s&p, lse lith, w srt, vf-f grs,  
mod sft-hd, w rd, non-sl calc, rr SH, rr pyr, string  
bl cut, bri bl ring

MD: 9.190  
TVD: 7.223.45  
Inclination: 89.78  
Azimuth: 267.9  
VS: 725.22

SS: med-dk t  
mod sft-hd, v  
bri bl ring



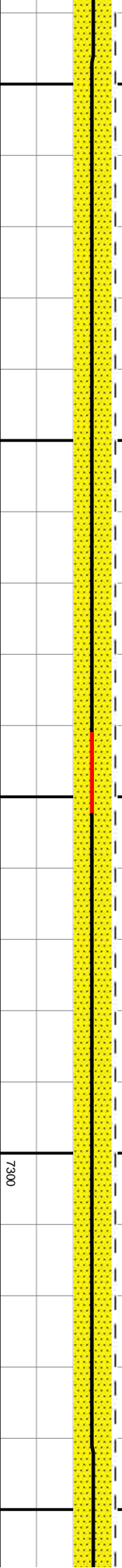




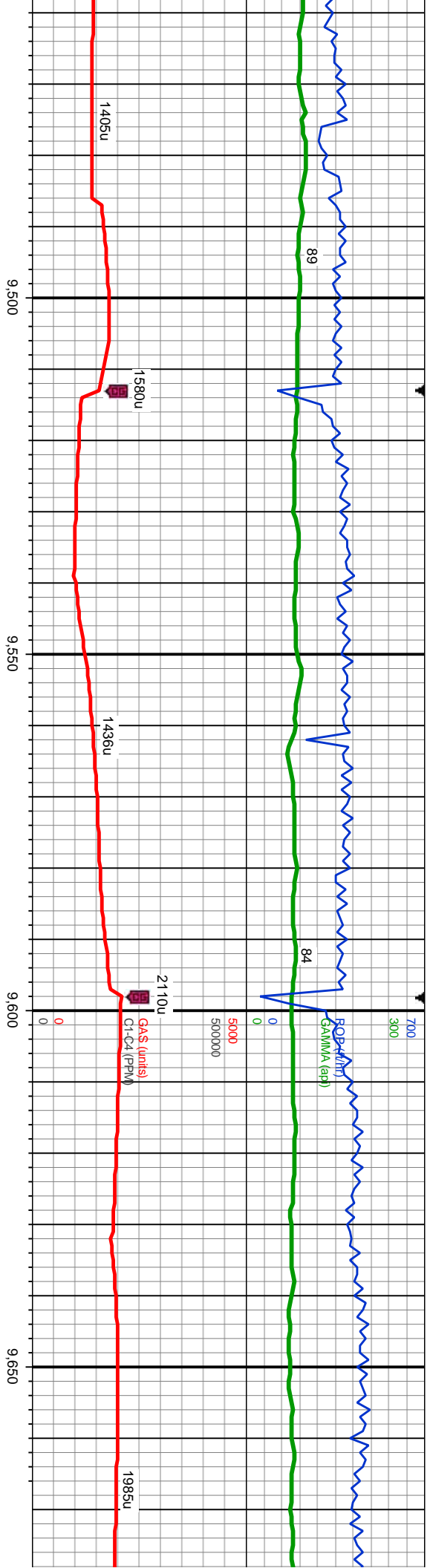
MD: 9.275  
TVD: 7.224.02  
Inclination: 89.44  
Azimuth: 267.65  
VS: 810.22

MD: 9.360  
TVD: 7.224.28  
Inclination: 90.21  
Azimuth: 268.1  
VS: 895.22

MD: 9.448  
TVD: 7.223.79  
Inclination: 90.43  
Azimuth: 268.92  
VS: 983.21







v srt, vf-f grs,  
f, sting bl cut,

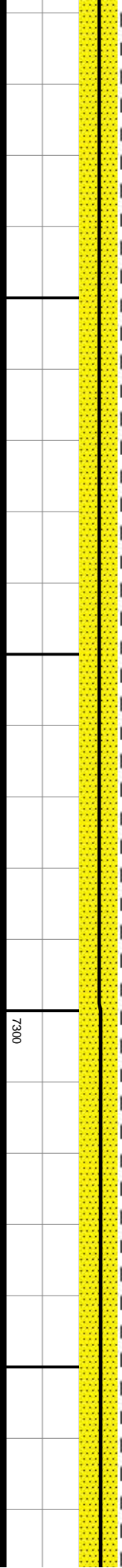
SS: med-dk brn, clr-s&p, lse lith, w srt, vf-f grs,  
mod sft-hd, w rd, sl calc cnt, rr SH, rr pyr, sting  
bl cut, bri bl ring

SS: med-dk brn, clr-s&p, clus, lse lith, w srt, vf-f  
grs, mod sft-hd, w rd, sl calc cnt, rr SH, rr pyr,  
sting bl cut, bri bl ring

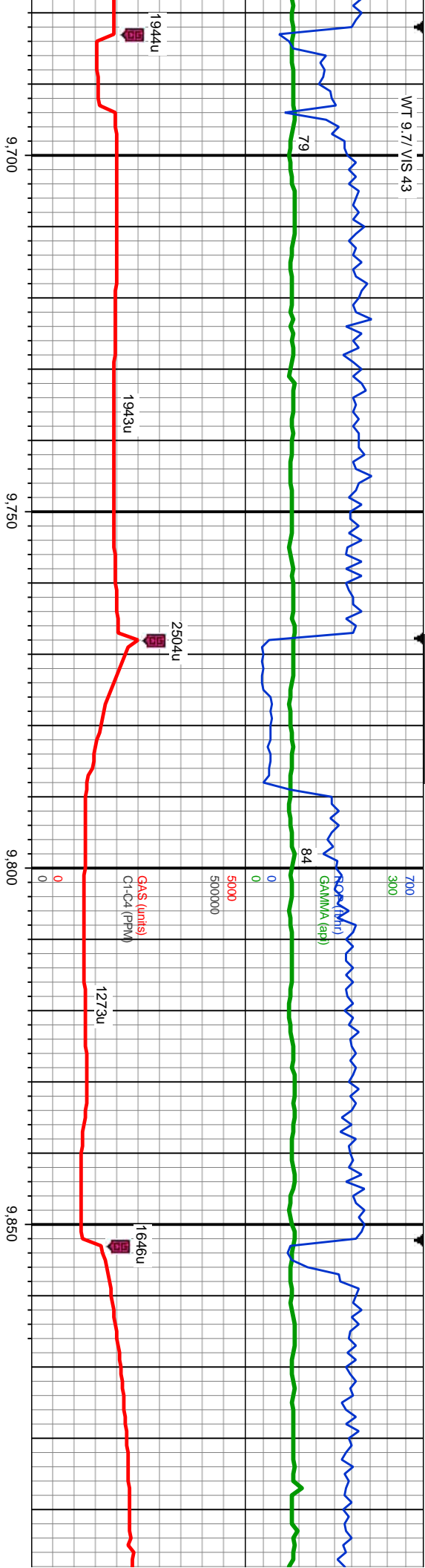
MD: 9.535  
TVD: 7,223.14  
Inclination: 90.43  
Azimuth: 269.38  
VS: 1,070.19

MD: 9.620  
TVD: 7,222.5  
Inclination: 90.43  
Azimuth: 269.6  
VS: 1,155.16

TVD (ft)





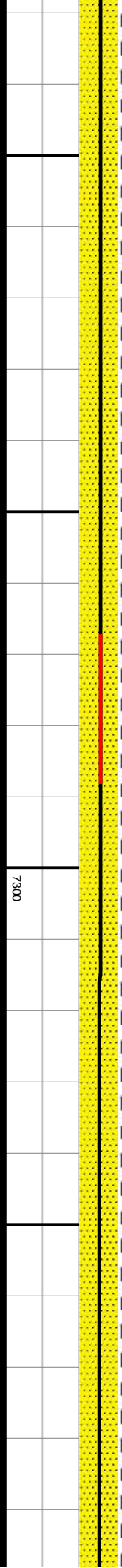


SS: med-dk brn, cfr-s&p, clus, lse lith, w srt, vf-f  
grs, mod sft-hd, w rd, sl calc cntl, rr SH, rr pyr,  
stmg bl cut, bri bl ring

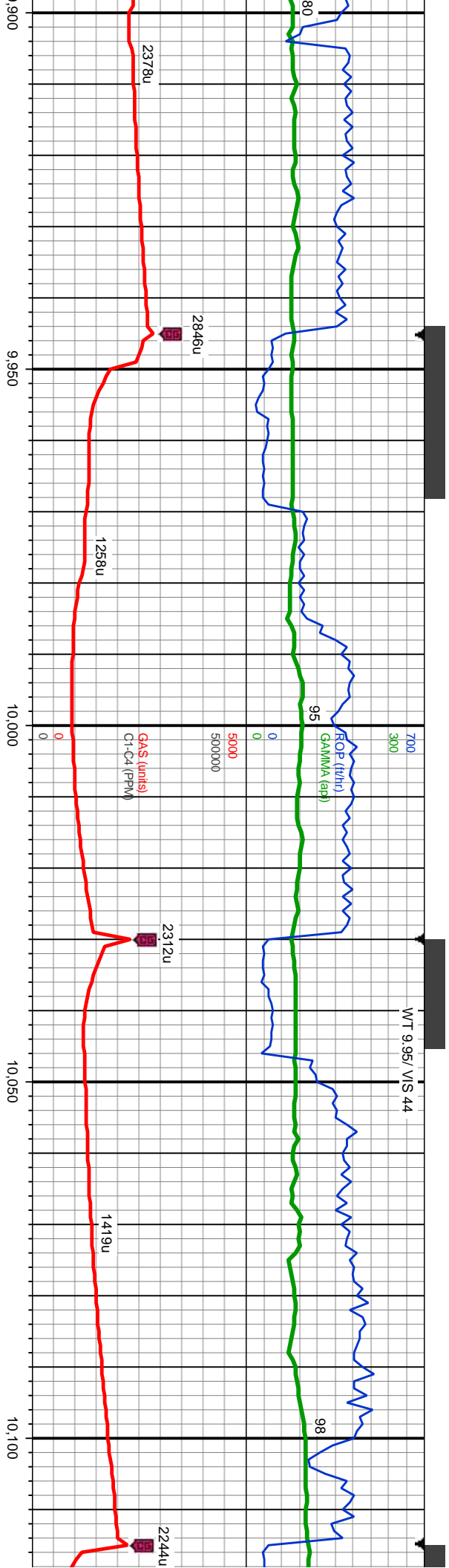
SS: med-dk brn, cfr-s&p, clus, lse lith, w srt, vf-f  
grs, mod sft-hd, w rd, sl calc cntl, rr SH, rr pyr,  
stmg bl cut, bri bl ring

MD: 9.708  
TVD: 7.222.1  
Inclination: 90.09  
Azimuth: 269.73  
VS: 1.243.12

MD: 9.880  
TVD: 7.222.99  
Inclination: 89.32  
Azimuth: 268.65  
VS: 1.415.08







SS: med-dk brn, clr-s&p, clus, lse lith, w srt, vf-f  
grs, mod sft-hd, w rd, sl calc cnt, rr SH, rr pyr,  
stmg bl cut, bri bl ring

MD: 9.965  
TVD: 7,224.89  
Inclination: 88.12  
Azimuth: 267.07  
VS: 1,500.05

TVD (ft)

SS: med-dk brn, clr-s&p, clus, lse lith, w srt, vf-f  
grs, mod sft-hd, w rd, sl calc cnt, rr SH, rr pyr,  
stmg bl cut, bri bl ring

MD: 10.050  
TVD: 7,227.06  
Inclination: 88.95  
Azimuth: 266.93  
VS: 1,585.01

7300

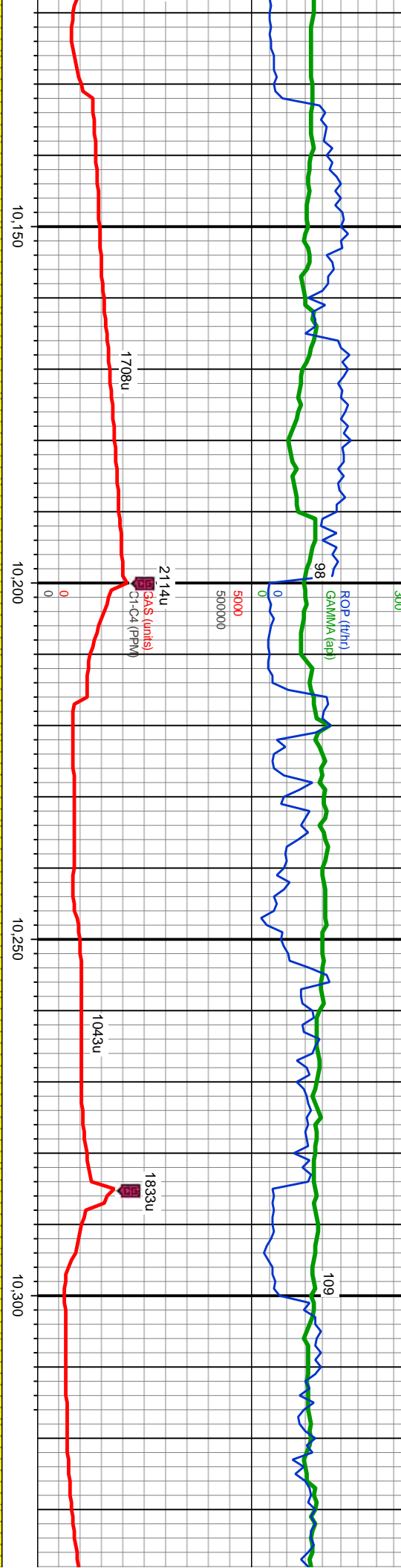




WT 9.9/ VIS 43

WT 9.9/ VIS 42

WT 9.9/ VIS 40



SS: med-dk brn, cfr-s&p, clus, lse lith, w srl, vf-f  
grs, mod sft-hd, w rd, sl calc cnt, rr SH, rr pyr, —  
stmg bl cut, bri bl ring

SS: med-dk brn, cfr-s&p, clus, lse lith, w srl, vf-f  
grs, mod sft-hd, w rd, sl calc cnt, rr SH, rr pyr, —  
stmg bl cut, bri bl ring

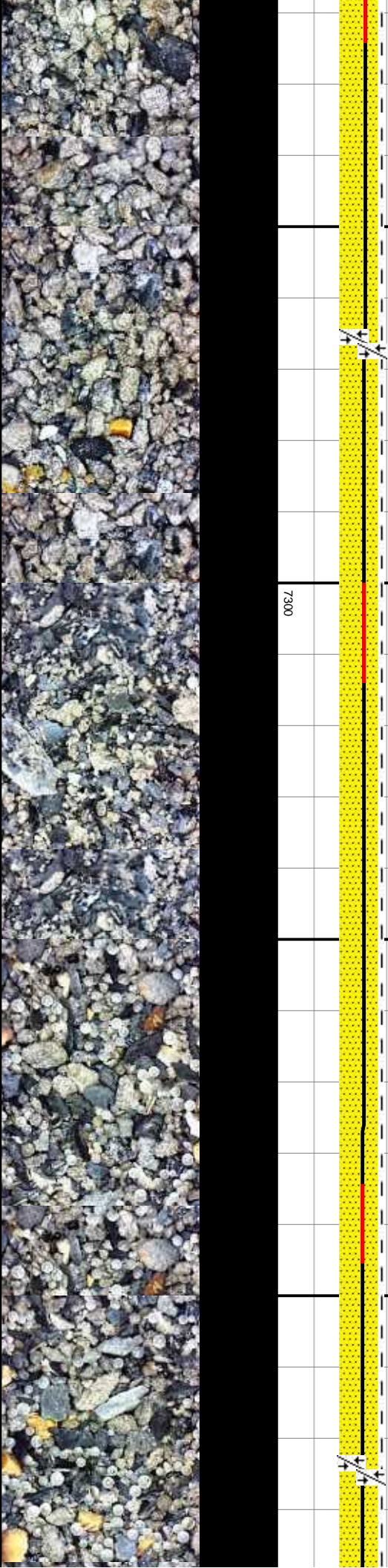
SS: med-dk b  
grs, mod sft-f  
stmg bl cut, b

MD: 10.136  
TVD: 7,228.24  
Inclination: 89.47  
Azimuth: 266.96  
VS: 1.670.99

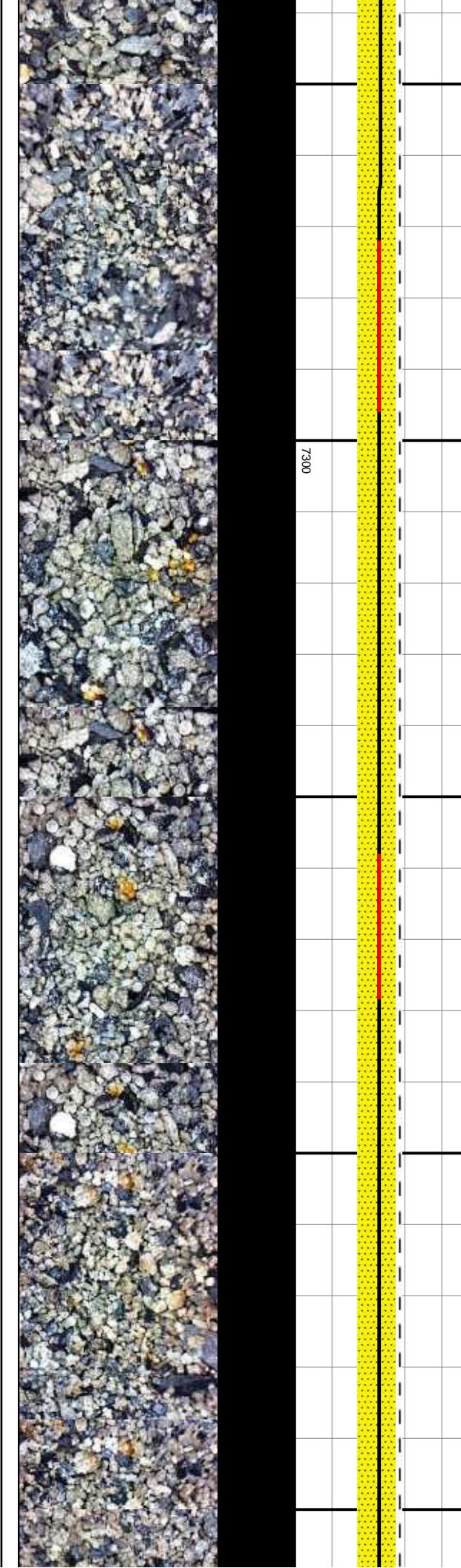
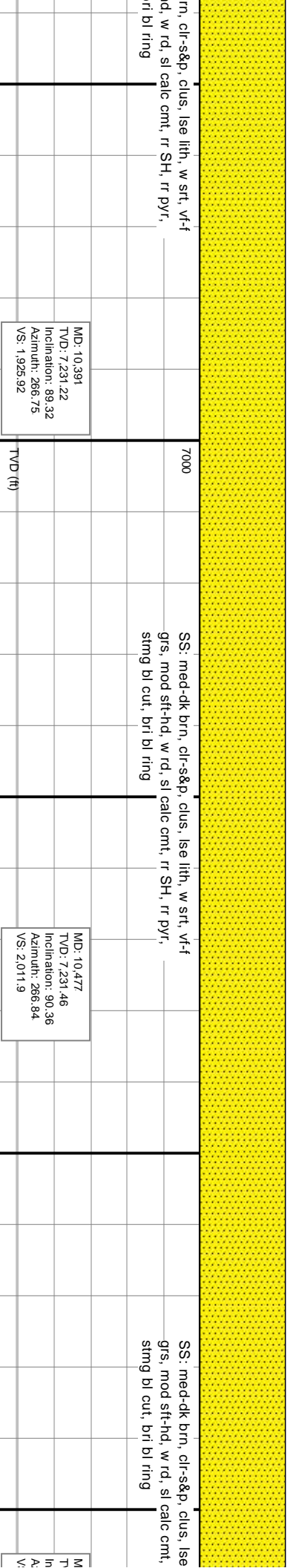
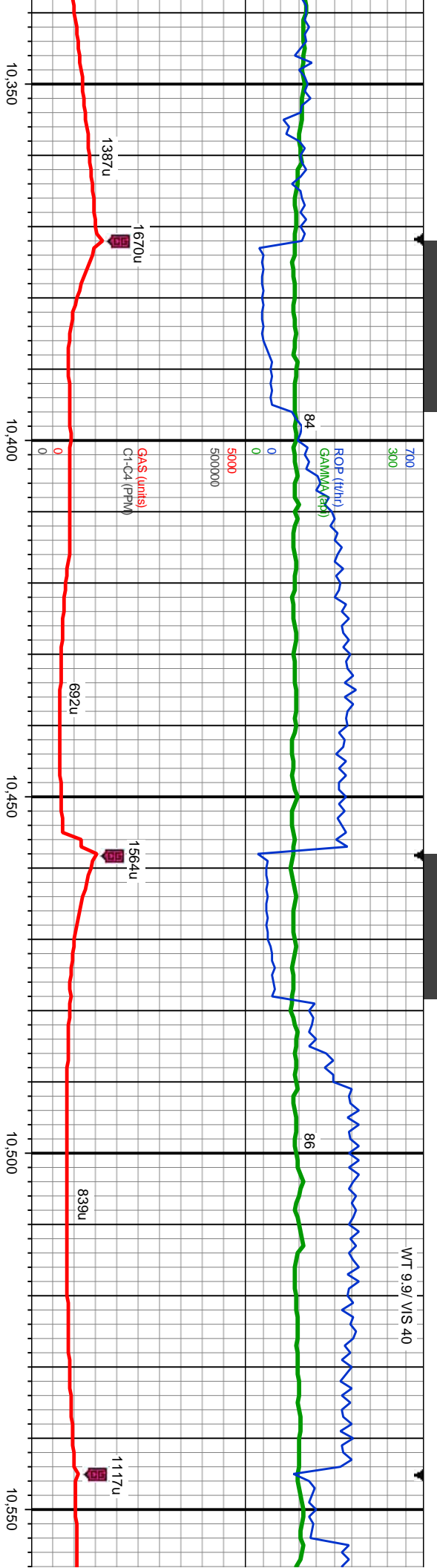
TVD (ft)

MD: 10.221  
TVD: 7,229.01  
Inclination: 89.5  
Azimuth: 267.25  
VS: 1.755.98

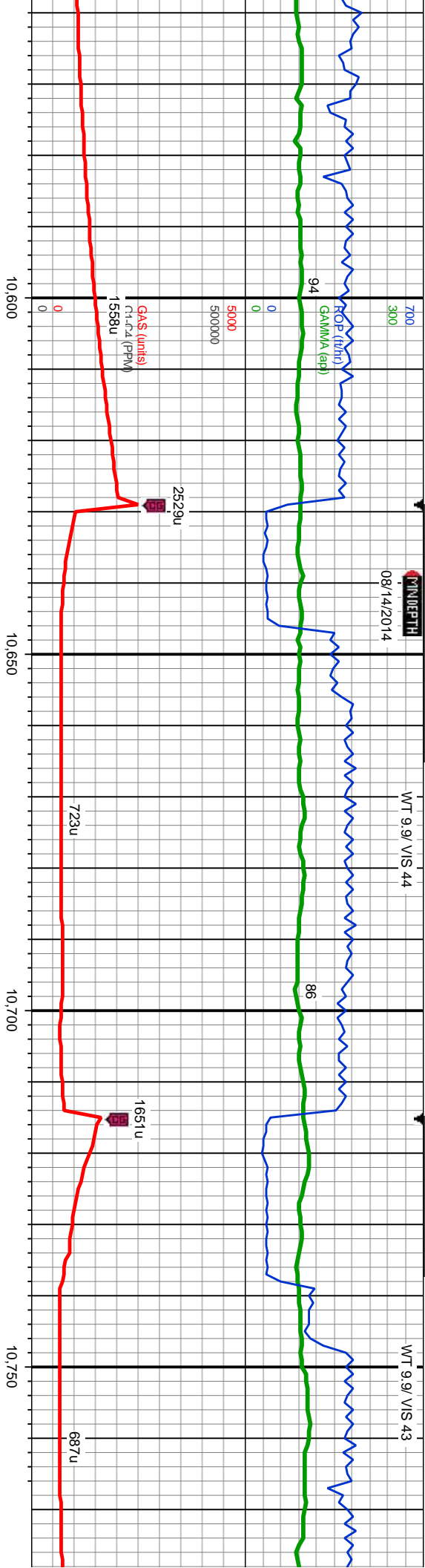
MD: 10.306  
TVD: 7,230.05  
Inclination: 89.1  
Azimuth: 266.45  
VS: 1.840.95











lith, w srt, vf-f  
rr SH, rr pyf, —

SS: med-dk brn, clr-s&p, clus, lse lith, w srt, vf-f  
grs, mod sft-hd, w rd, sl calc cmt, rr SH, rr pyf, —  
stmg bl cut, bri bl ring

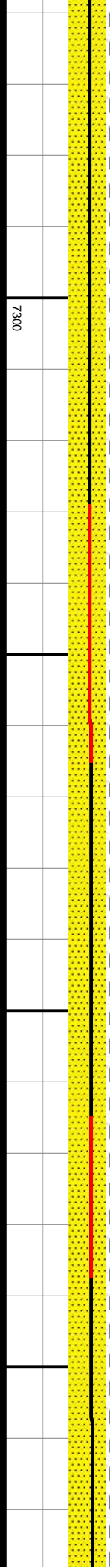
SS: med-dk brn, clr-s&p, clus, lse lith, w srt, vf-f  
grs, mod sft-hd, w rd, sl calc cmt, rr SH, rr pyf, —  
stmg bl cut, bri bl ring

D: 10.564  
ID: 7.231.07  
Inclination: 90.15  
Azimuth: 266.79  
S: 2.098.88

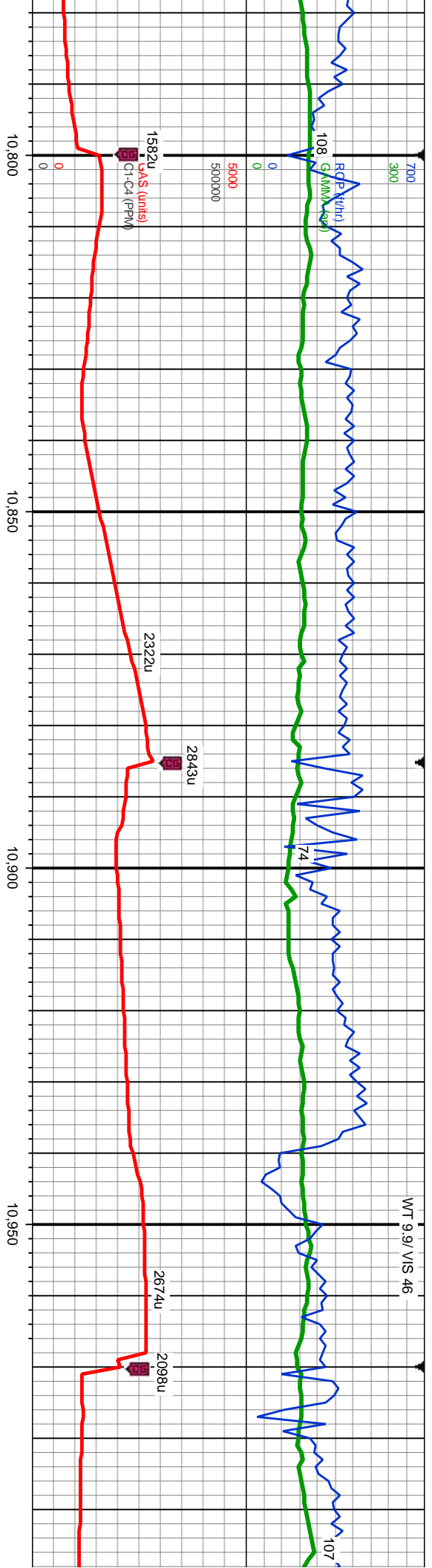
MD: 10.649  
TVD: 7.230.96  
Inclination: 90  
Azimuth: 267.1  
VS: 2.183.86

MD: 10.734  
TVD: 7.230.12  
Inclination: 91.13  
Azimuth: 267.64  
VS: 2.268.85

TVD (ft)







SS: med-dk brn, cfr-s&p, clus, lse lith, w srt, vf-f  
grs, mod sft-hd, w rd, sl calc cnt, SH: lt-dk gy, sb  
ply-ply, mod sft-frm, mod strd, f-med grs, string  
bl cut, bri bl ring

SS: med-dk brn, cfr-s&p, clus, lse lith, w srt, vf-f  
grs, mod sft-hd, w rd, sl calc cnt, tr SH, string bl  
cut, bri bl ring

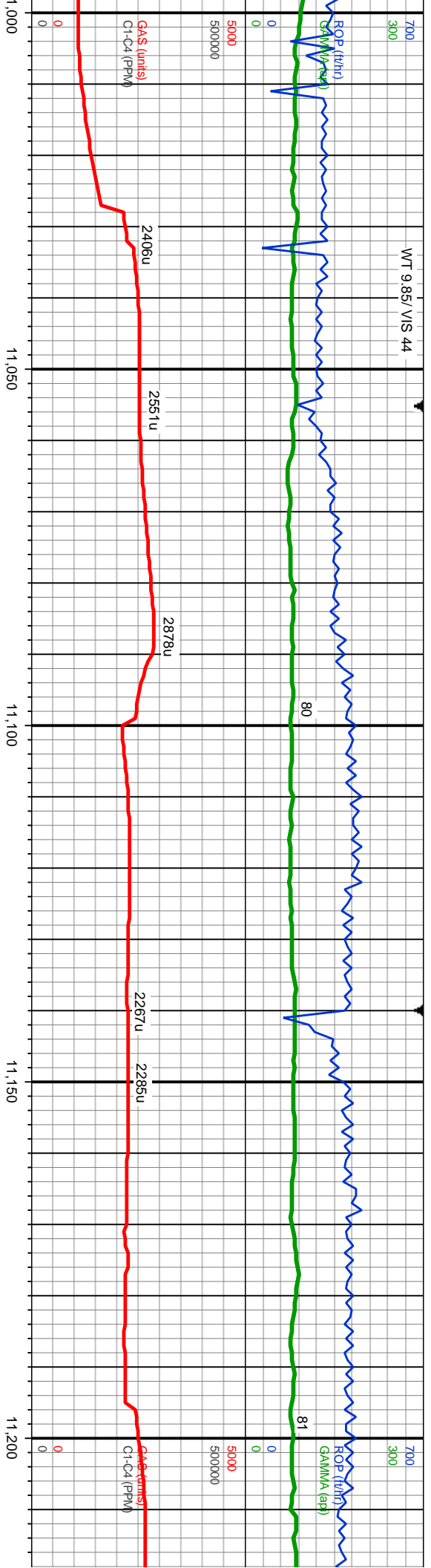
MD: 10.820  
TVD: 7.228.54  
Inclination: 90.98  
Azimuth: 267.4  
VS: 2.354.83

MD: 10.905  
TVD: 7.227.13  
Inclination: 90.92  
Azimuth: 267.29  
VS: 2.439.82

7300



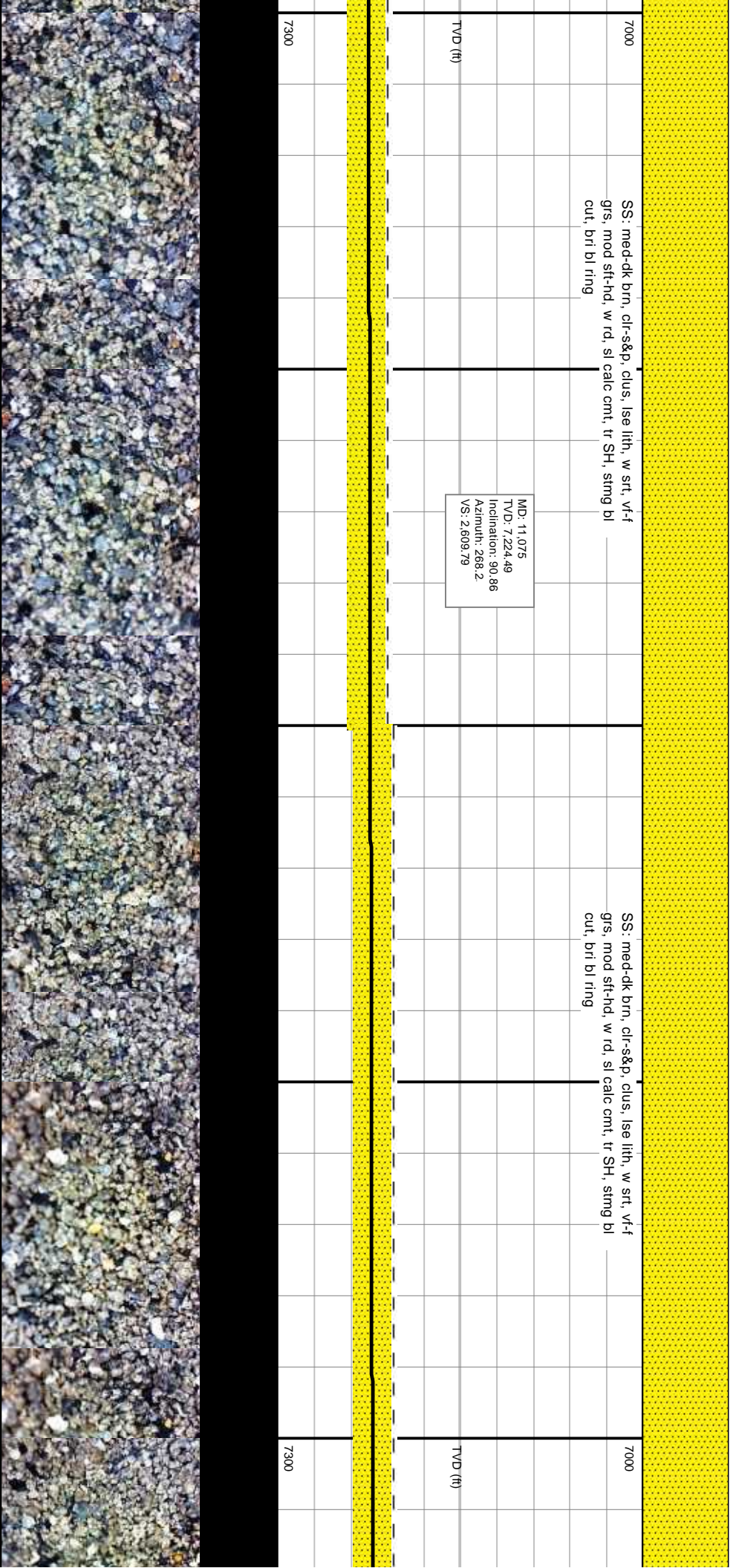




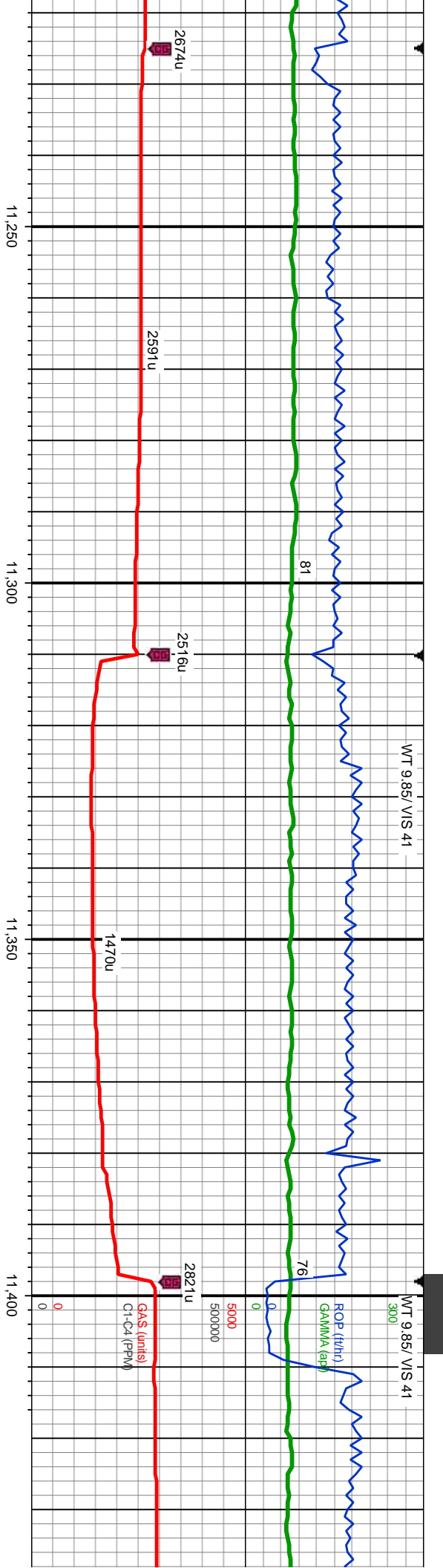
SS: med-dk brn, clr-s&p, clus, lse lith, w srt, vf-f  
grs, mod sft-hd, w rd, sl calc cmt, tr SH, sting bl  
cut, bri bl ring

MD: 11.075  
TVD: 7,224.49  
Inclination: 90.86  
Azimuth: 268.2  
VS: 2,609.79

SS: med-dk brn, clr-s&p, clus, lse lith, w srt, vf-f  
grs, mod sft-hd, w rd, sl calc cmt, tr SH, sting bl  
cut, bri bl ring







SS: med-dk brn, clr-s&g, clus, lse lith, w srt, vf-f  
grs, mod sft-hd, w rd, sl calc cmt, tr SH, sting bl  
cut, bri bl ring

MD: 11,246  
TVD: 7,221.79  
Inclination: 90.95  
Azimuth: 268.49  
VS: 2,780.77

SS: med-dk brn, clr-s&g, clus, lse lith, w srt, vf-f  
grs, mod sft-hd, w rd, sl calc cmt, tr SH, rr pyr,  
stmg bl cut, bri bl ring

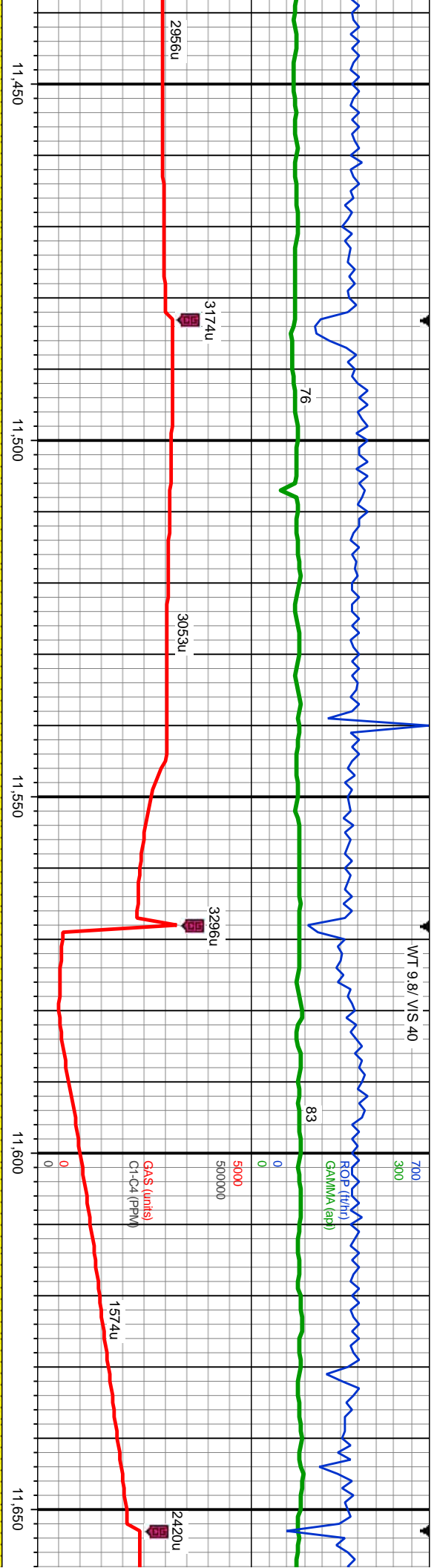
MD: 11,331  
TVD: 7,220.38  
Inclination: 90.95  
Azimuth: 268.41  
VS: 2,865.75

SS: med-d  
grs, mod s  
stmg bl c

MD: 11,416  
TVD: 7,219.56  
Inclination: 90.15  
Azimuth: 268.01  
VS: 2,950.75





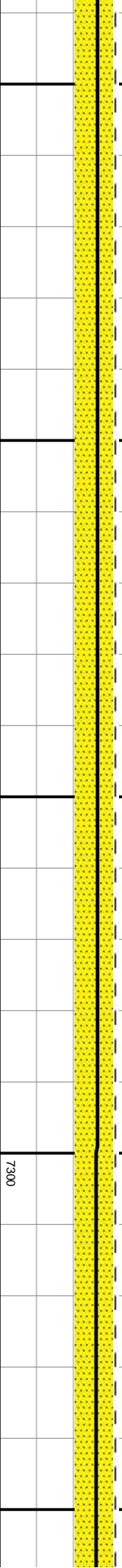


cl-k brn, clr-s&p, clus, lse lith, w srt, vf-f  
sft-hd, w rd, sl calc cnt, tr SH, rr pyr,  
it, bri bl ring

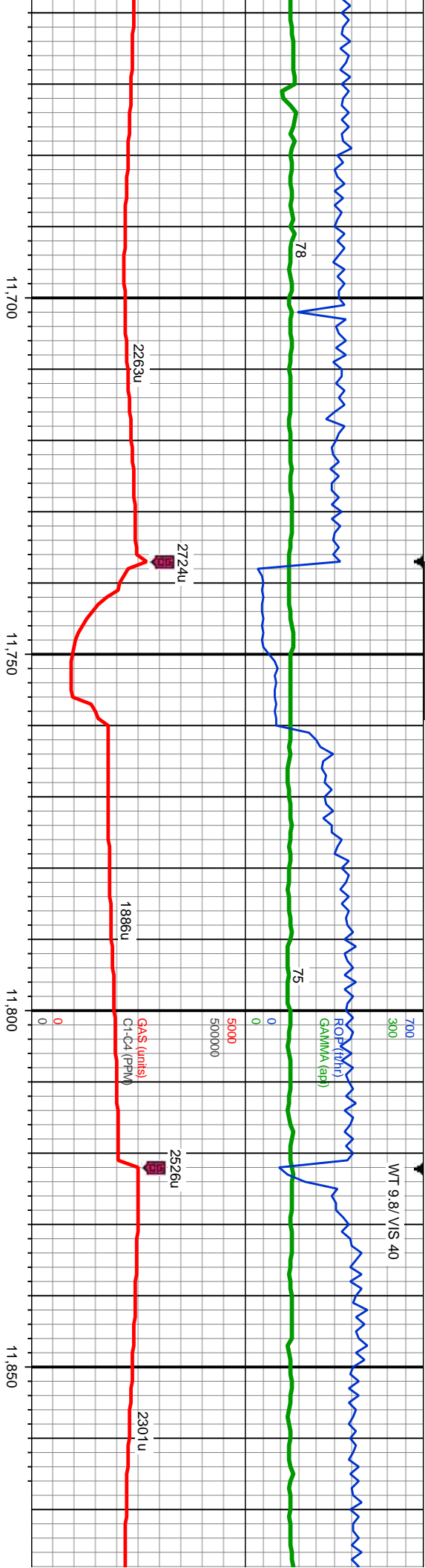
MD: 11.501  
TVD: 7,219.5  
Inclination: 89.93  
Azimuth: 267.57  
VS: 3.035,75

SS: med-dk brn, clr-s&p, clus, lse lith, w srt, vf-f  
grs, mod sft-hd, w rd, sl calc cnt, tr SH, rr pyr,  
stng bl cut, bri bl ring

SS: med-dk brn, clr-s&p, clus, lse lith  
grs, mod sft-hd, w rd, sl calc cnt, tr  
cut, bri bl ring







h, w srt, vf-f  
SH, string bl

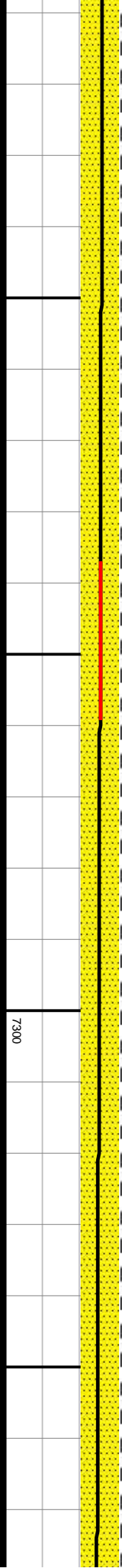
SS: med-dk brn, clr-s&p, clus, lse lith, w srt, vf-f  
grs, mod sft-hd, w rd, sl calc cnt, tr SH, string bl  
cut, bri bl ring

SS: med-dk brn, clr-s&p, lse lith, w srt, vf-f grs,  
mod sft-hd, w rd, rr SH, string bl cut, bri bl ring

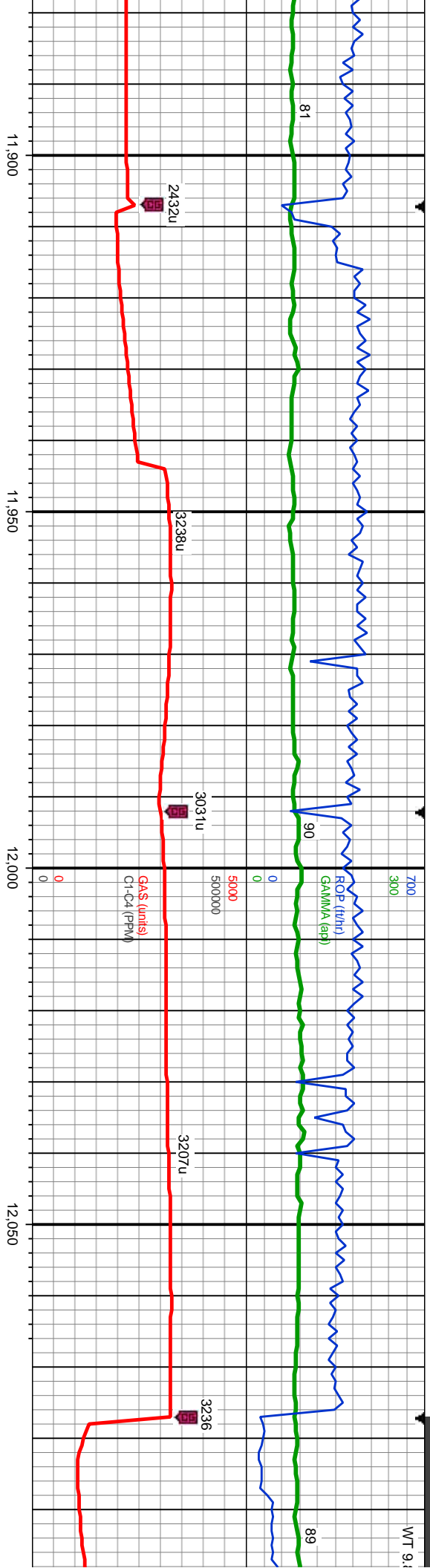
MD: 11.672  
TVD: 7,220.91  
Inclination: 89.13  
Azimuth: 266.72  
VS: 3.20672

TVD (ft)

MD: 11.842  
TVD: 7,224.26  
Inclination: 88.61  
Azimuth: 267.56  
VS: 3.37667



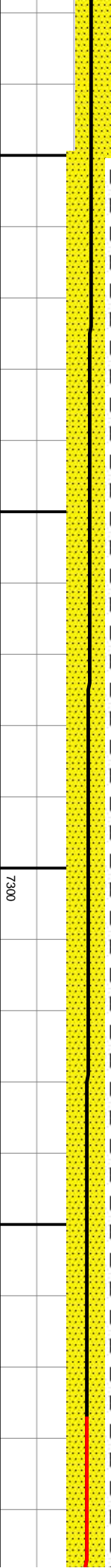




SS: med-dk brn, clr-s&g, clus, lse lith, w srt, vf-f  
grs, mod sft-hd, w rd, sl calc cmt, tr SH, rr pyr, —  
stmg bl cut, bri bl ring

SS: med-dk brn, clr-s&g, clus, lse lith, w srt, vf-f  
grs, mod sft-hd, w rd, sl calc cmt, SH: lt-dk gy, sb  
ply-pty, mod sft-frm, mod strd, f-med grs, stmg  
bl cut, bri bl ring

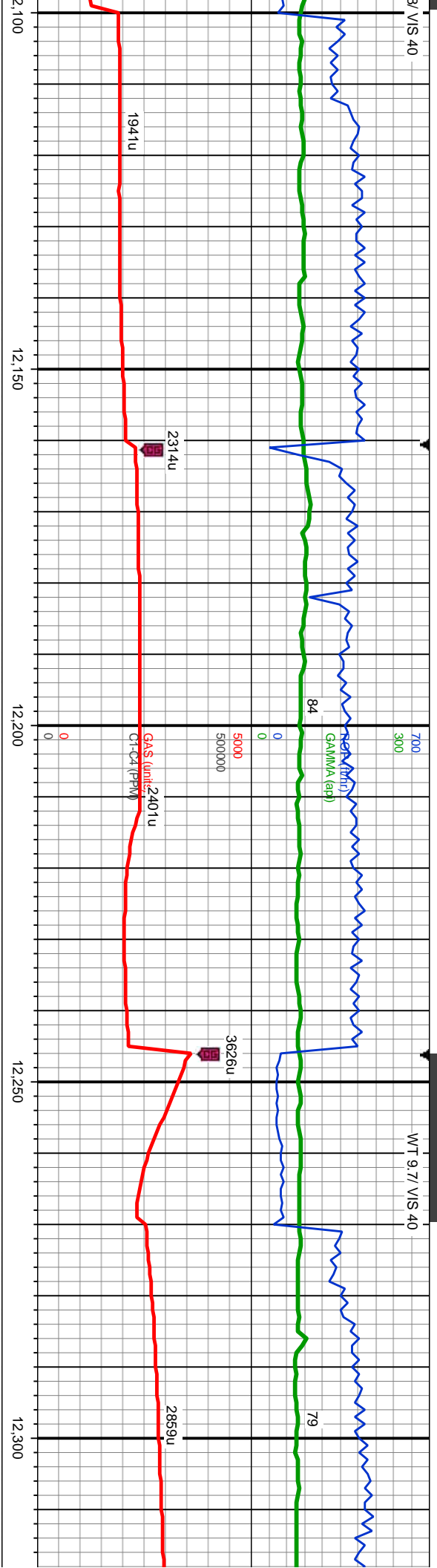
MD: 12.013  
TVD: 7.228.23  
Inclination: 88.73  
Azimuth: 267.32  
VS: 3.547.61





3/ VIS 40

W/T 9.7/ VIS 40



SS: med-dk brn, cfr-s&p, clus, lse lith, w srt, vf-f  
grs, mod sft-hd, w rd, sl calc cnt, SH: lt-dk gy, sb  
ply-pty, mod sft-firm, mod srt, f-med grs, stmg  
bl cut, brl bl ring

SS: med-dk brn, cfr-s&p, clus, lse lith, w srt, vf-f  
grs, mod sft-hd, w rd, sl calc cnt, SH: lt-dk gy, sb  
ply-pty, mod sft-firm, mod srt, f-med grs, stmg  
bl cut, brl bl ring

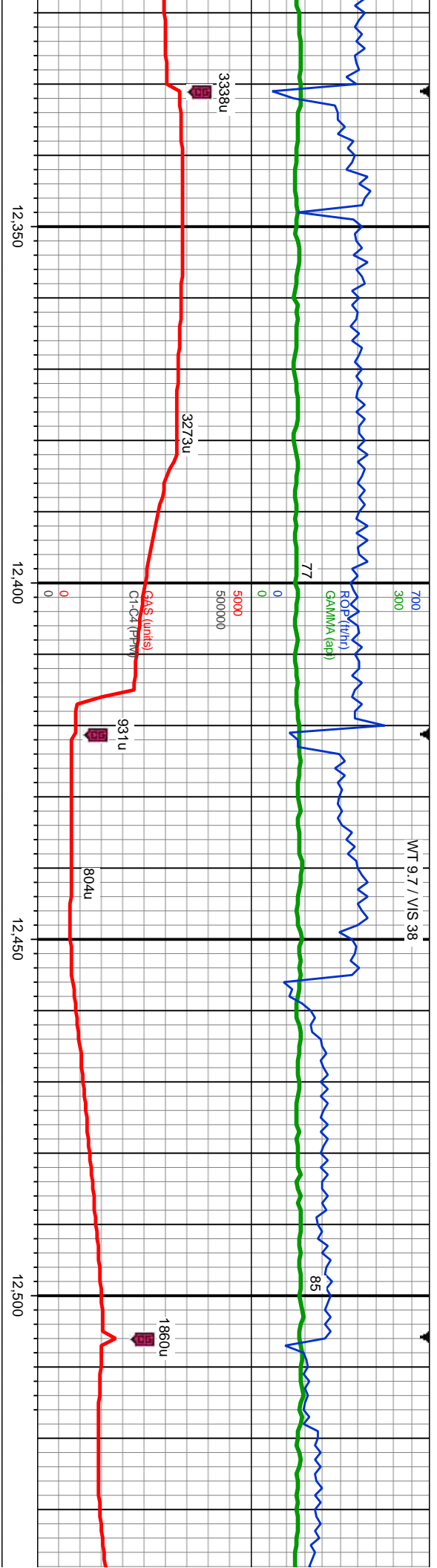
MD: 12.183  
TVD: 7,231.17  
Inclination: 89.29  
Azimuth: 268.13  
VS: 3.71758

TVD (ft)

7300







SS: med-dk brn, cl-r-s&p, clus, lse lith, w srt, vf-f  
grs, mod sft-hd, w rd, sl calc cnt, SH: lt-dk gy, sb  
ply-pty, mod sft-frn, mod strd, f-med grs, sting  
bl cut, bri bl ring

MD: 12,354  
TVD: 7,230.01  
Inclination: 90.67  
Azimuth: 265.47  
VS: 3,888.58

TVD (ft)

SS: med-dk brn, cl-r-s&p, clus, lse lith, w srt, vf-f  
grs, mod sft-hd, w rd, sl calc cnt, SH: lt-dk gy, sb  
ply-pty, mod sft-frn, mod strd, f-med grs, sting  
bl cut, bri bl ring

MD: 12,524  
TVD: 7,227.61  
Inclination: 90.95  
Azimuth: 268.04  
VS: 4,058.56

SS: med-dk b  
grs, mod sft-f  
ply-pty, mod  
bl cut, bri bl r

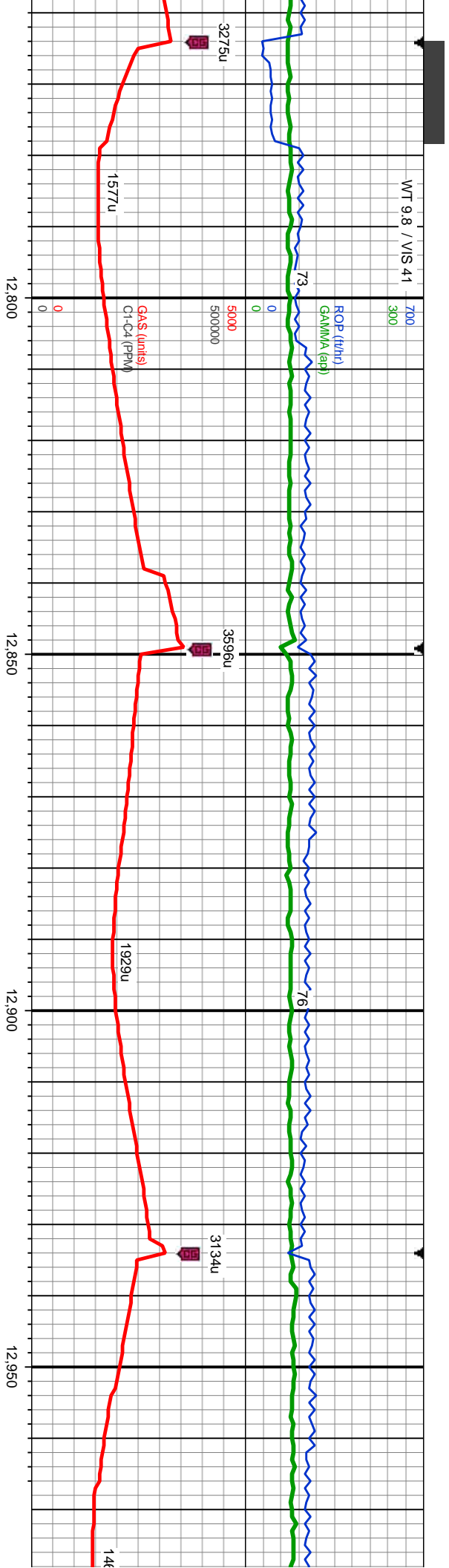
7300











h, w srt, vf-f SH, sting bl	7000	SS: med-dk brn, clr-s&p, clus, lse lith, w srt, vf-f grs, mod sft-hd, w rd, sl calc cnt, tr SH, sting bl cut, bri bl ring	MD: 12.782 TVD: 7,223.91 Inclination: 89.93 Azimuth: 267.07 VS: 4,316.52	TVD (ft)
	7300	SS: med-dk brn, clr-s&p, clus, lse lith, w srt, vf-f grs, mod sft-hd, w rd, sl calc cnt, tr SH, sting bl cut, bri bl ring	MD: 12.868 TVD: 7,224.08 Inclination: 89.84 Azimuth: 266.57 VS: 4,402.51	

