

Scale 1:240 (5"=100') Imperial  
Measured Depth Log

Well Name: Howard 28N-29HZ  
Location: Section 32, T1N, R67W, Weld County, CO.  
License Number: API: 05-123-37864  
Spud Date: 27 July 2014  
Surface Coordinates: 2019' FNL 2430' FWL SENW Sec 32 T1N R67W;  
Lat: 40° 0' 29.293" N; Long: -104° 55' 1.506" W  
Bottom Hole Coordinates: 10' FNL; 1069' FWL NENW Sec 29 T1N R67W;  
Lat: 40.0292890°; Long: -104.9143769°  
Ground Elevation (ft): 5049 K.B. Elevation (ft): 5065  
Logged Interval (ft): 7000' To: 15,238' Total Depth (ft): 15,238'  
Formation: Pierre Shales/Sands, Niobrara, Ft Hays, Codell  
Type of Drilling Fluid: Water & Poly to 7183', LSND 7183'-15,238  
Region: Wattenberg  
Drilling Completed: 5 August 2014  
Printed by HORIZONTAL.LOG from WellSight Systems 1-800-447-1534 www.WellSight.com

OPERATOR

Company: Kerr-McGee Oil & Gas Onshore LP  
Address: Granite Tower - 1099 18th St, Ste 1800  
Denver, CO 80202  
CO Geologist, Tom Birmingham

GEOLOGIST

Name: Jack Rogers & Alex Caruana  
Company: Goolsby Brothers & Assoc. (GBA), Inc. (www.goolsbybrothers.com)  
Address: 575 Union Blvd.  
Suite 208,  
Lakewood CO. 80228

E-logs

MWD GR 1,072' - 15,238'





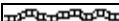



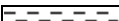




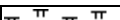






Casing

9 5/8" Surface Casing set @ 960' MD  
7" Intermediate Casing set @ 7948' MD  
4 1/2" Production Liner hung, landed @ 15,228'

Comments

1) Drilling Contractor: Xtreme Drilling, Rig #22  
Toolpusher: Tyler Humphrey/Jake King  
2) Company Man: Scott Hancock/Kent Priddy  
3) Mud Company : AES Engineer: Samuel Pedersen & Julianna Aycock  
4) Directional Drilling: Sperry/Halliburton  
Drillers: Jacob Switter & Bogdan Cristian  
MWD: Clay Wass & John Dieu  
5) Gas Equipment: Pason  
6) Wellsite Geology: Goolsby Brothers & Associates  
Geologists: Jack Rogers & Alex Caruana

ROCK TYPES

	Anhy		Congl		Shale		Ss
	Bent		Dol		Shcol		Chalk
	Clyst		Lmst		Shgy		Carb sh
	Coal		Mrlst		Ss		Sltly sh
	Oil sat.		Salt		Sltst		Arg ss

MINERAL

Anhy

Arggrn

Arg

Bent

Bit

Brecfrag

Calc

Carb

Chtdk

Chtlt

Dol

Feldspar

Ferrpel

Ferr

Glau

Gyp

Hvymin

Kaol

Marl

Minxl

Nodule

Phos

Pyr

Salt

Sandy

Silt

Sil

Sulphur

Tuff

FOSSIL

Algae

Amph

Belm

Bioclst

Brach

Bryozoa

Cephal

Coral

ACCESSORIES

Crin

Echin

Fish

Foram

Fossil

Gastro

Oolite

Ostra

Pelec

Pellet

Pisolite

Plant

Strom

STRINGER

Chlkstg

Anhy

Arg

Bent

Coal

DolGypLsMrstSltstrgSsstrg

TEXTURE

Boundst

Chalky

Cryxln

Earthy

Finexln

Grainst

Lithogr

Microxln

Mudst

Packst

Wackest

OIL SHOWS

Even

Spotted

Ques

Dead

Vspotty

near even

POROSITY TYPE

Earthy

Fenest

Fracture

Inter

Moldic

Organic

OTHER SYMBOLS

Pinpoint

Vuggy

ROUNDING

Rounded

Subrnd

Subang

Angular

SORTING

Well

Moderate

Poor

OIL SHOWS

Even

Spotted

Ques

Dead

Vspotty

near even

POROSITY TYPE

Earthy

Fenest

Fracture

Inter

Moldic

Organic

OTHER SYMBOLS

Pinpoint

Vuggy

ROUNDING

Rounded

Subrnd

Subang

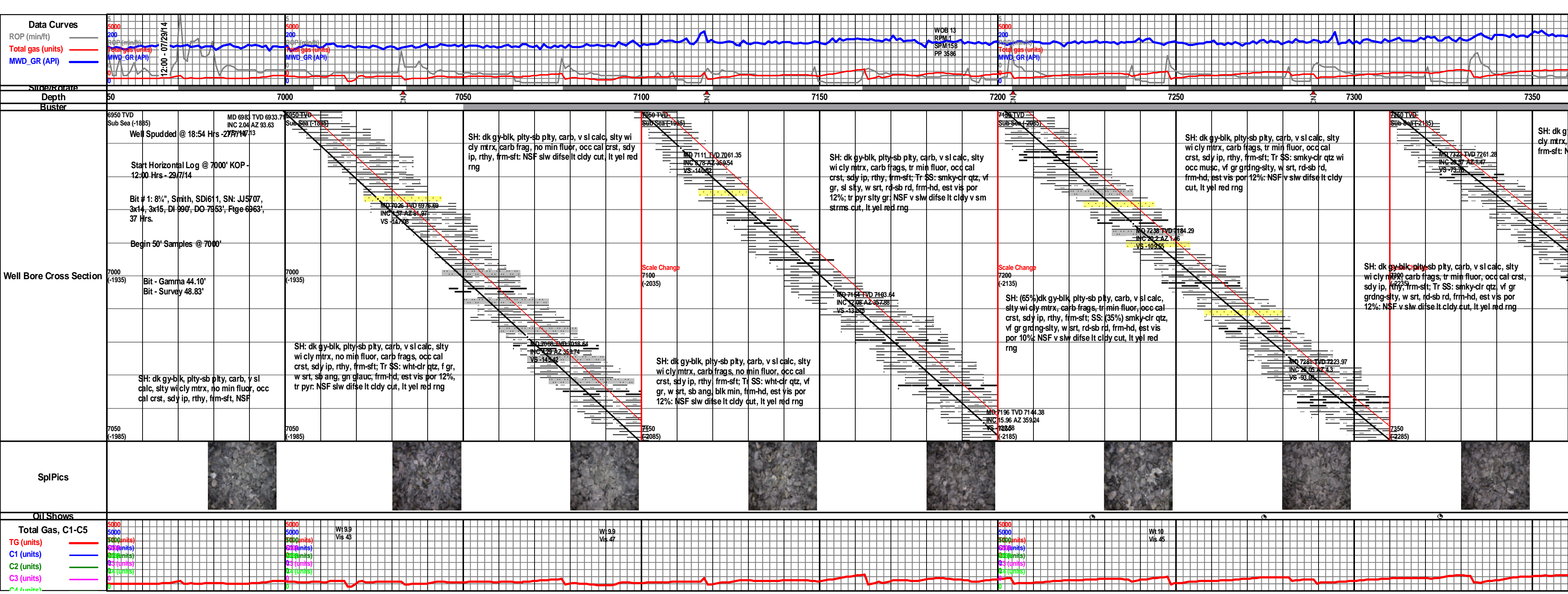
Angular

SORTING

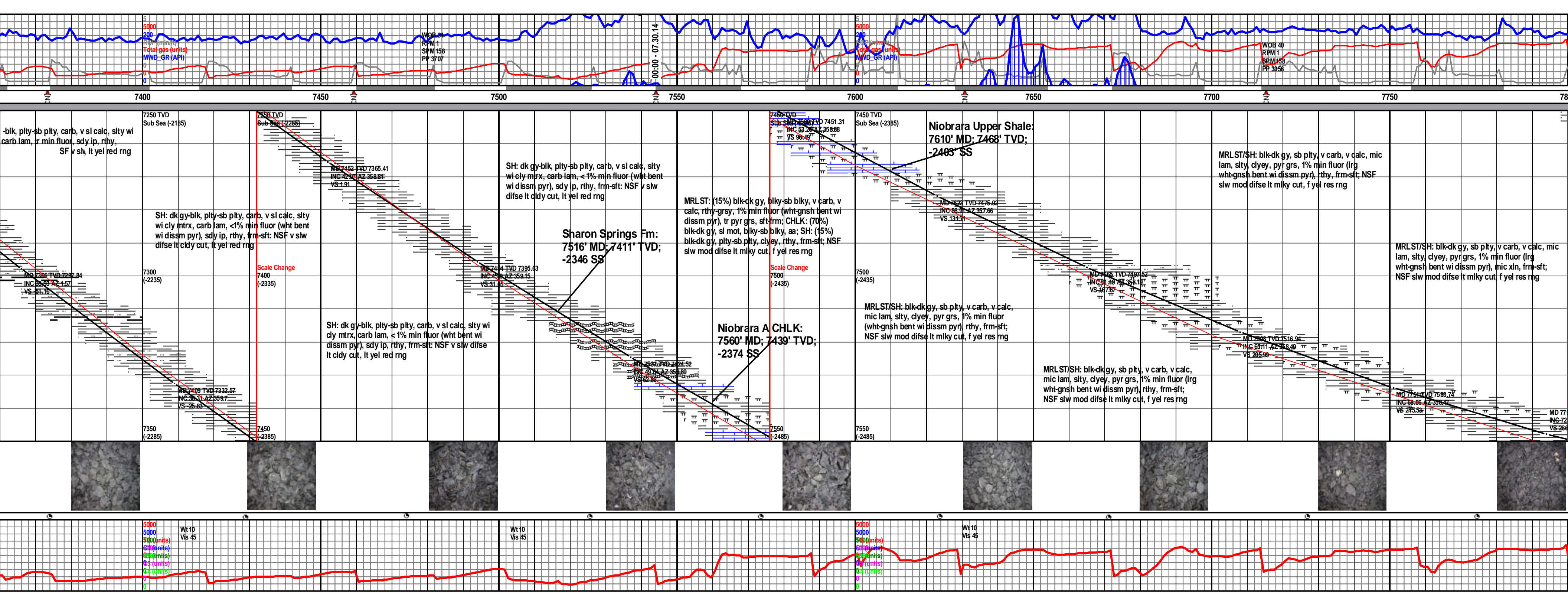
Well

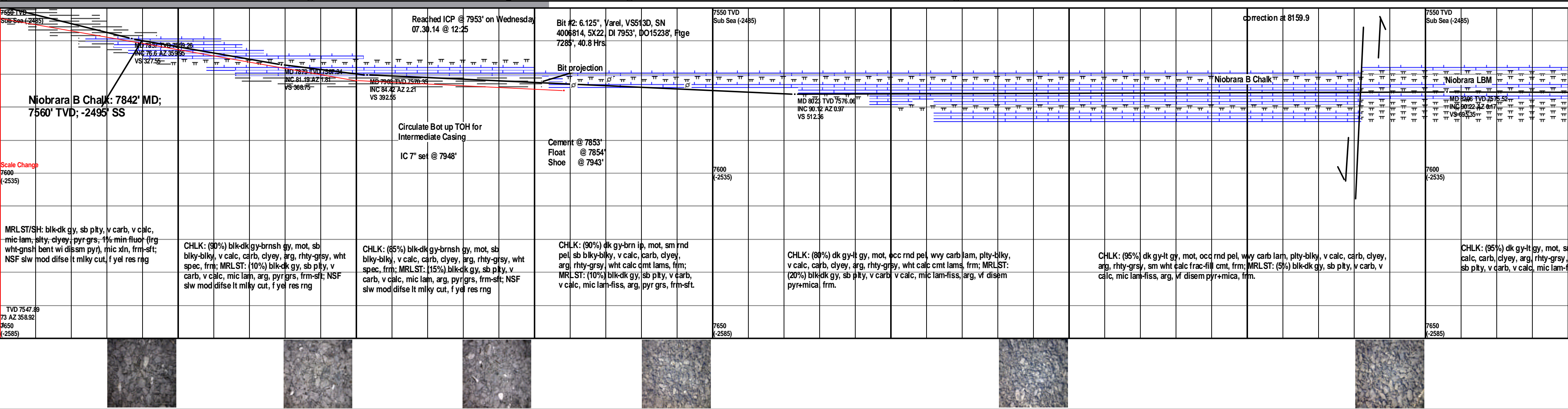
Moderate

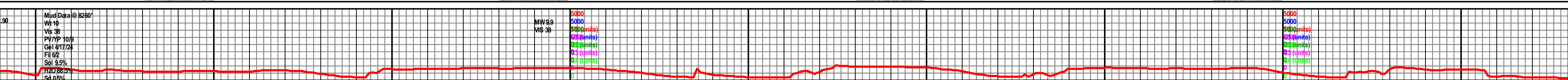
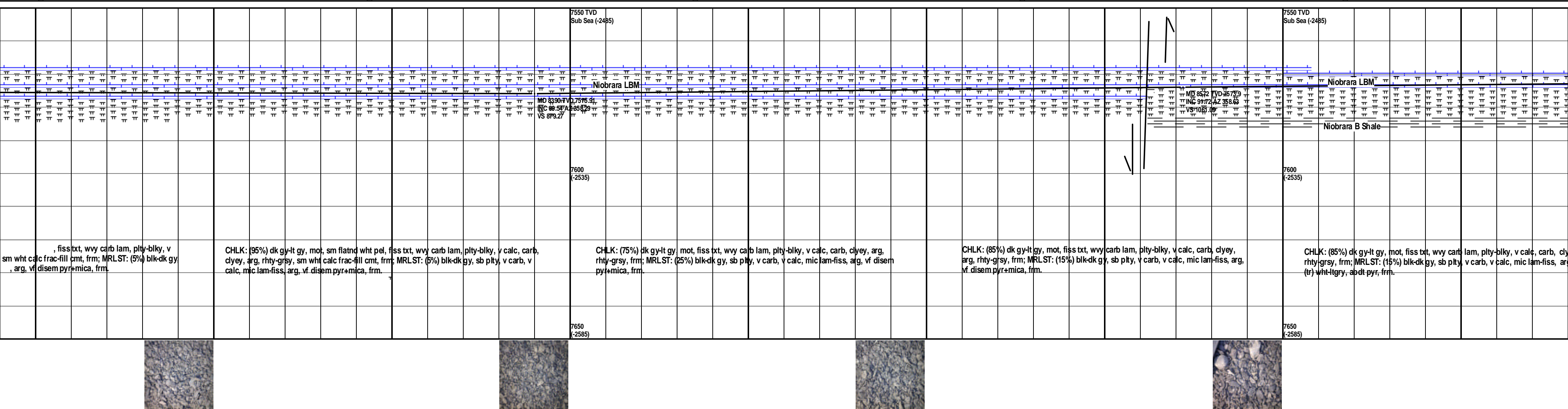
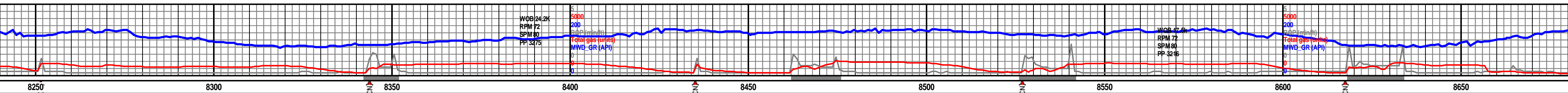
Poor



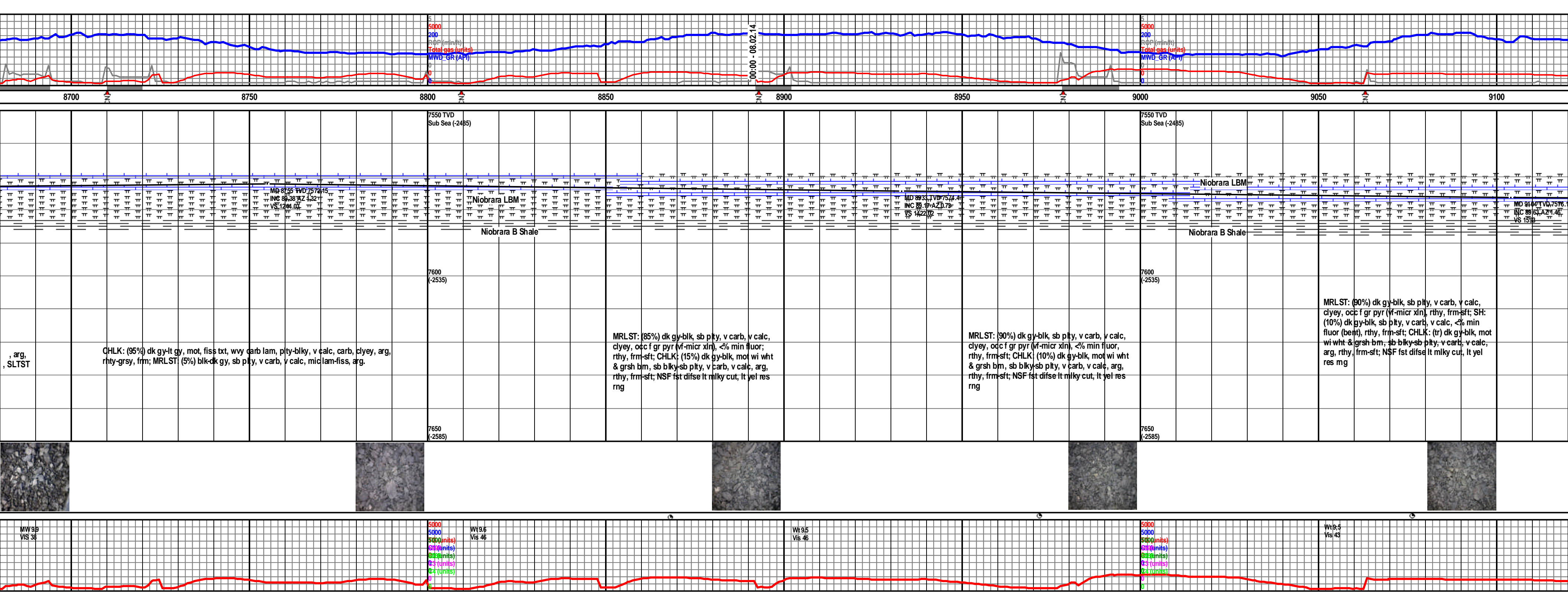




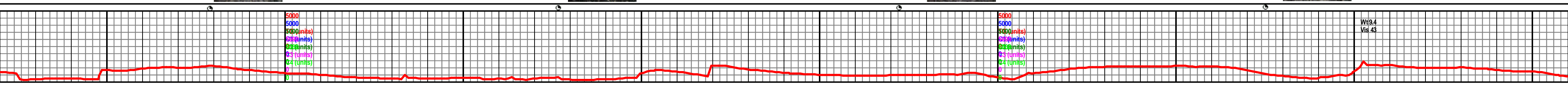
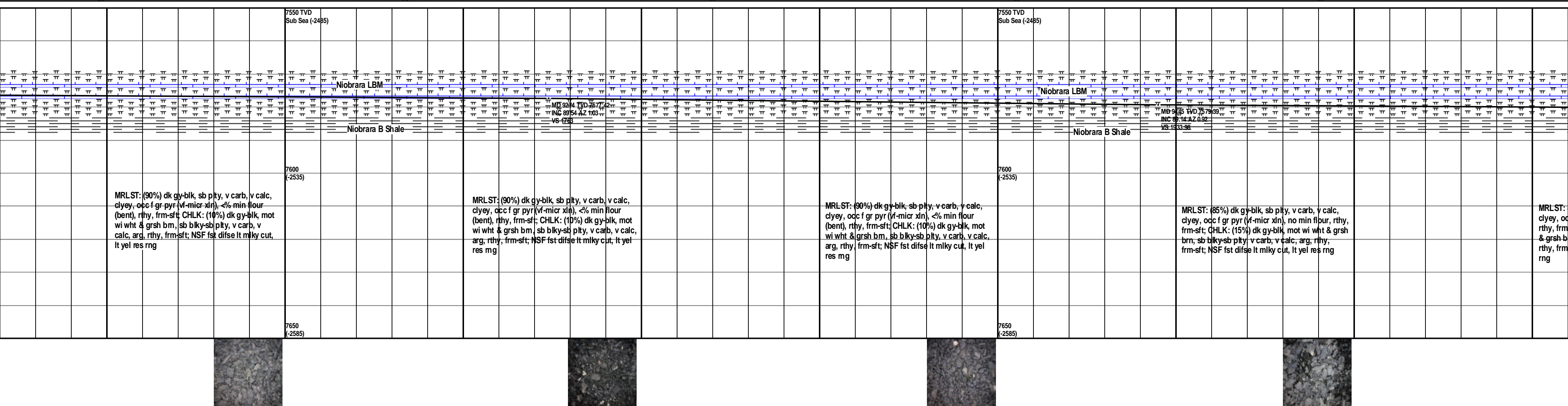


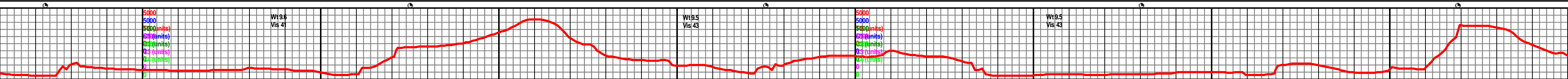
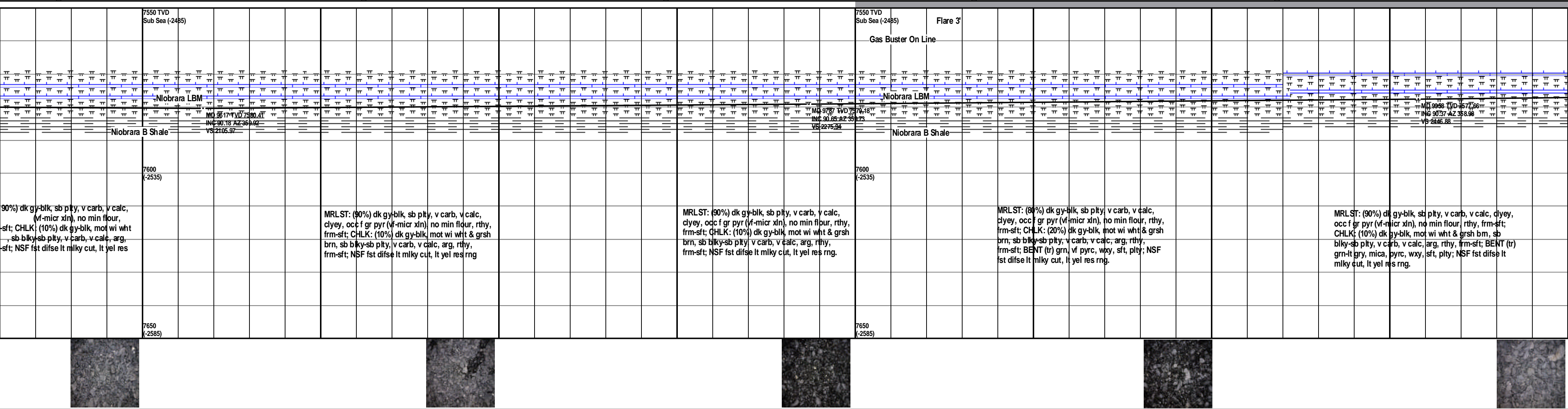


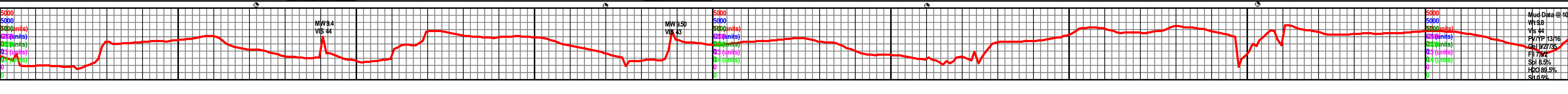


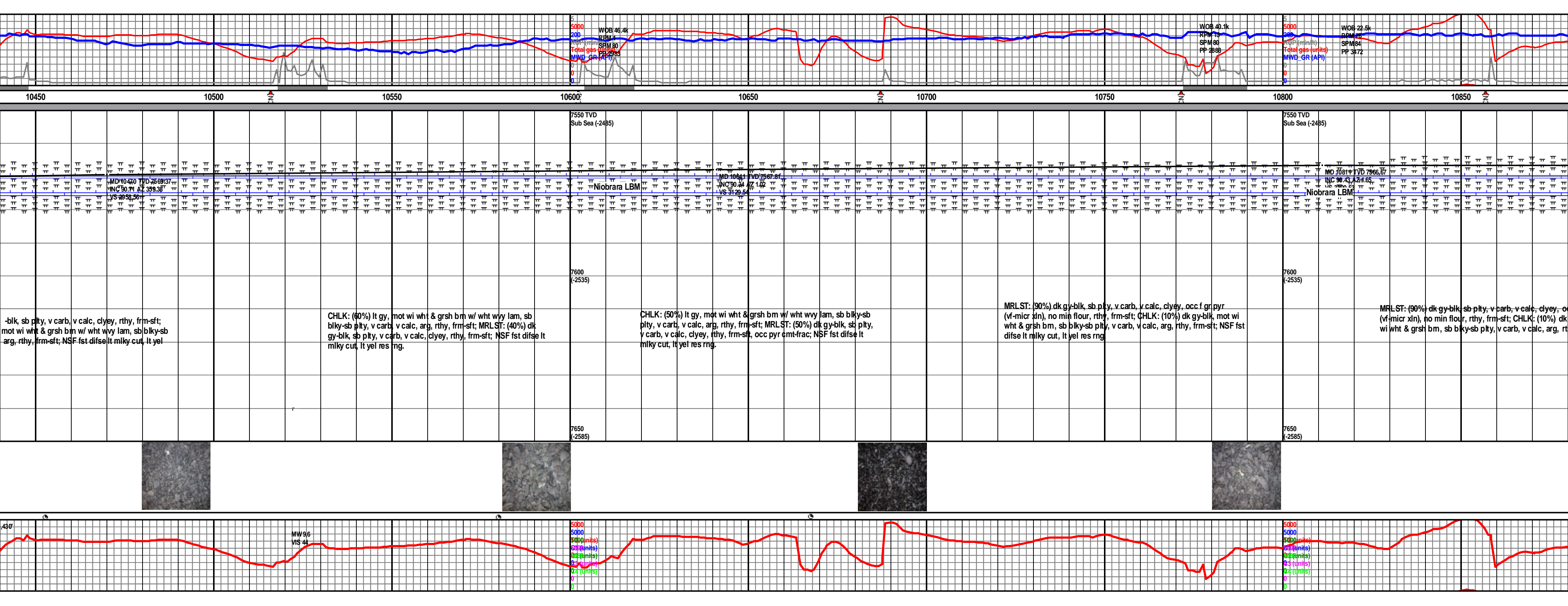




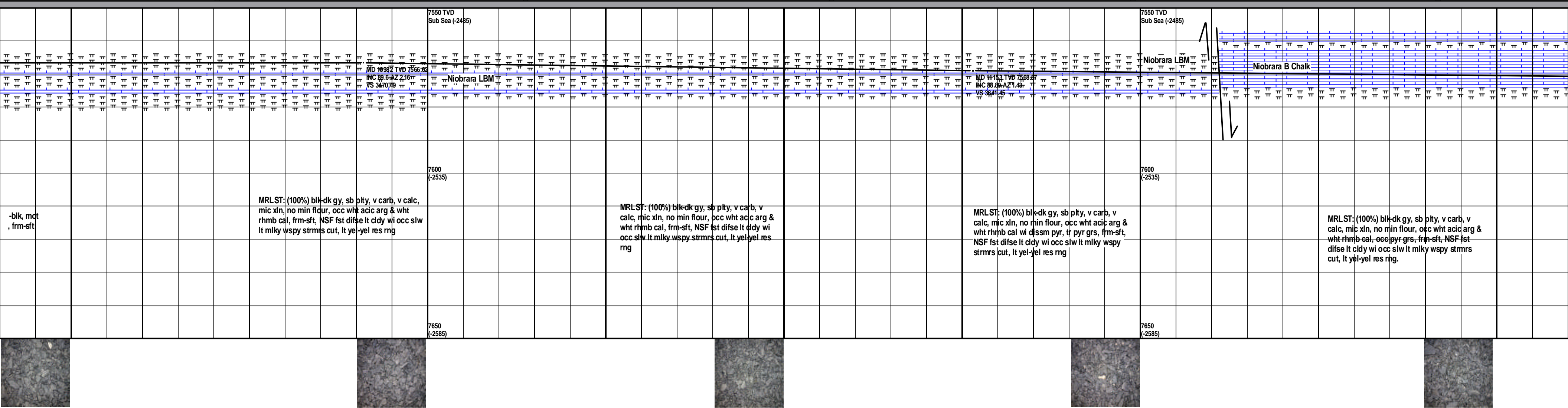


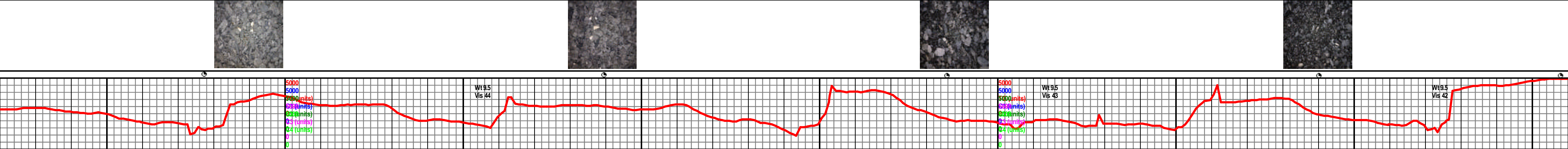
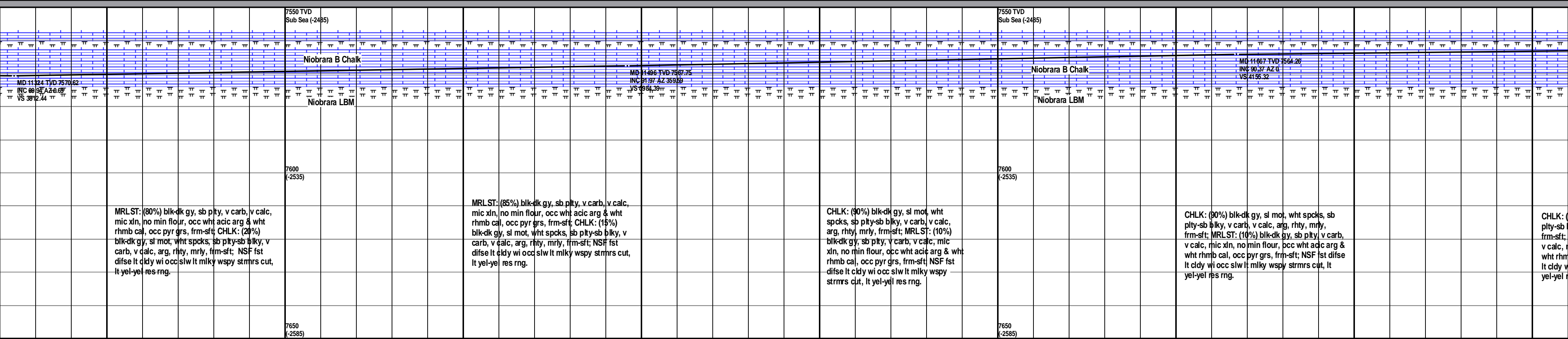


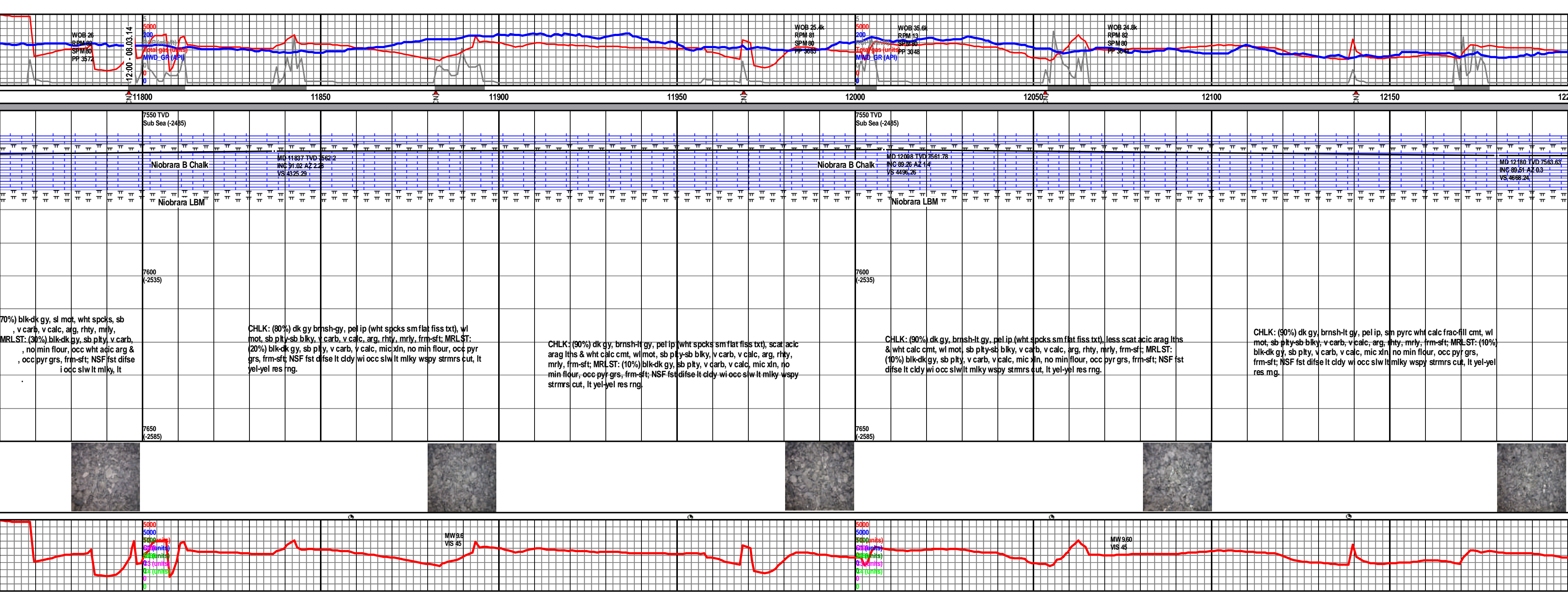


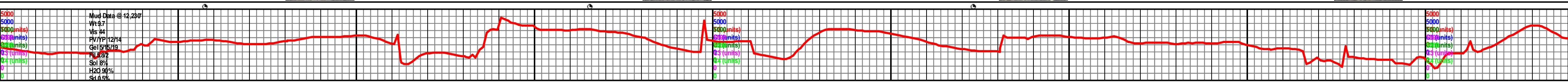
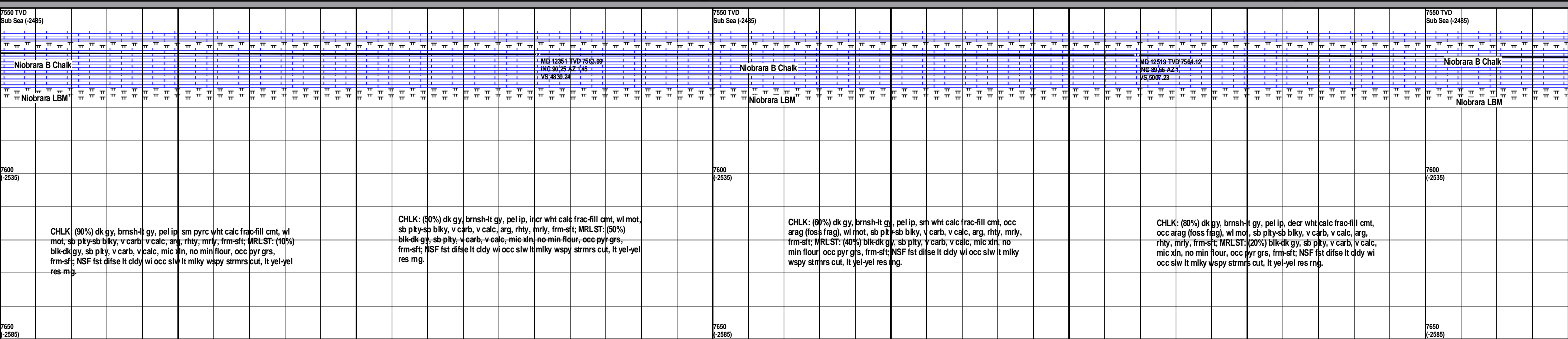




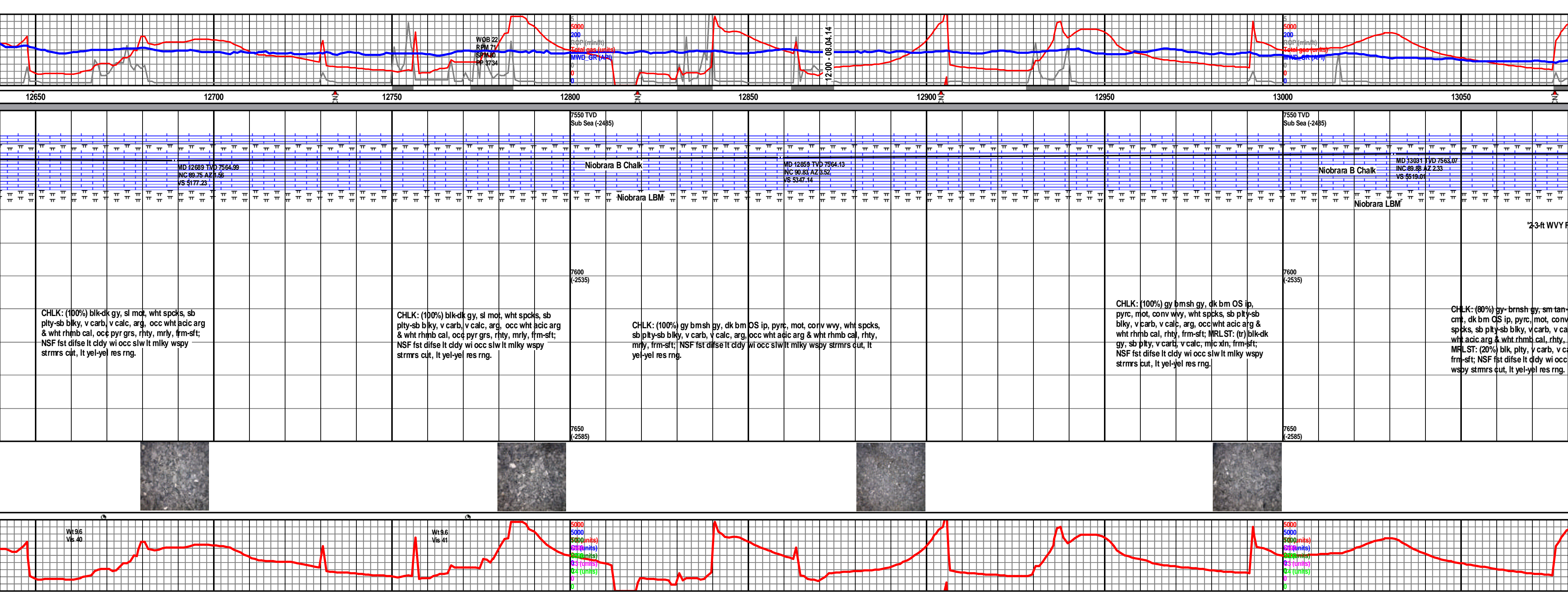


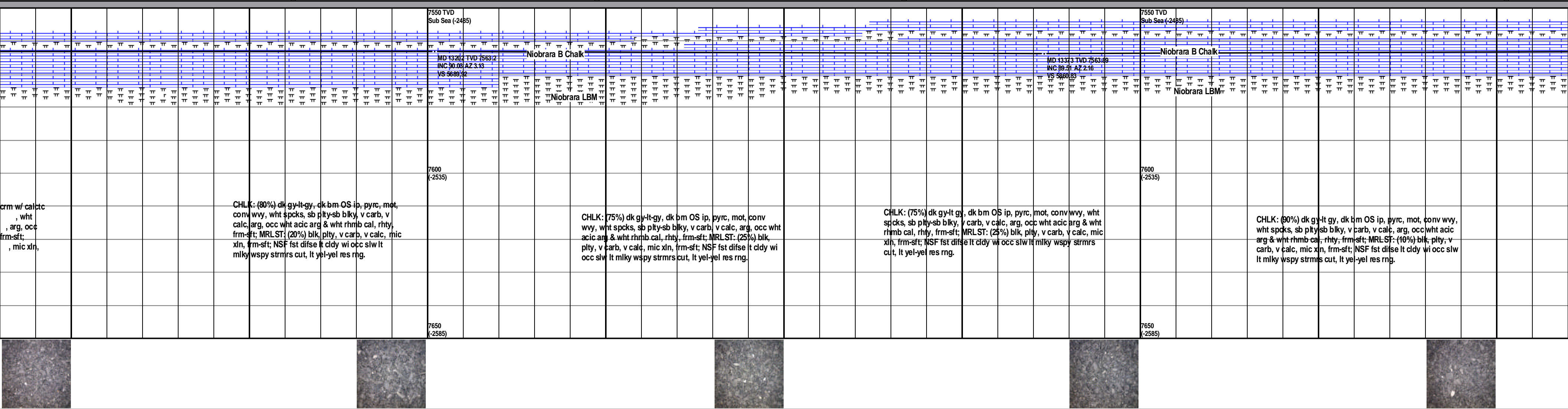


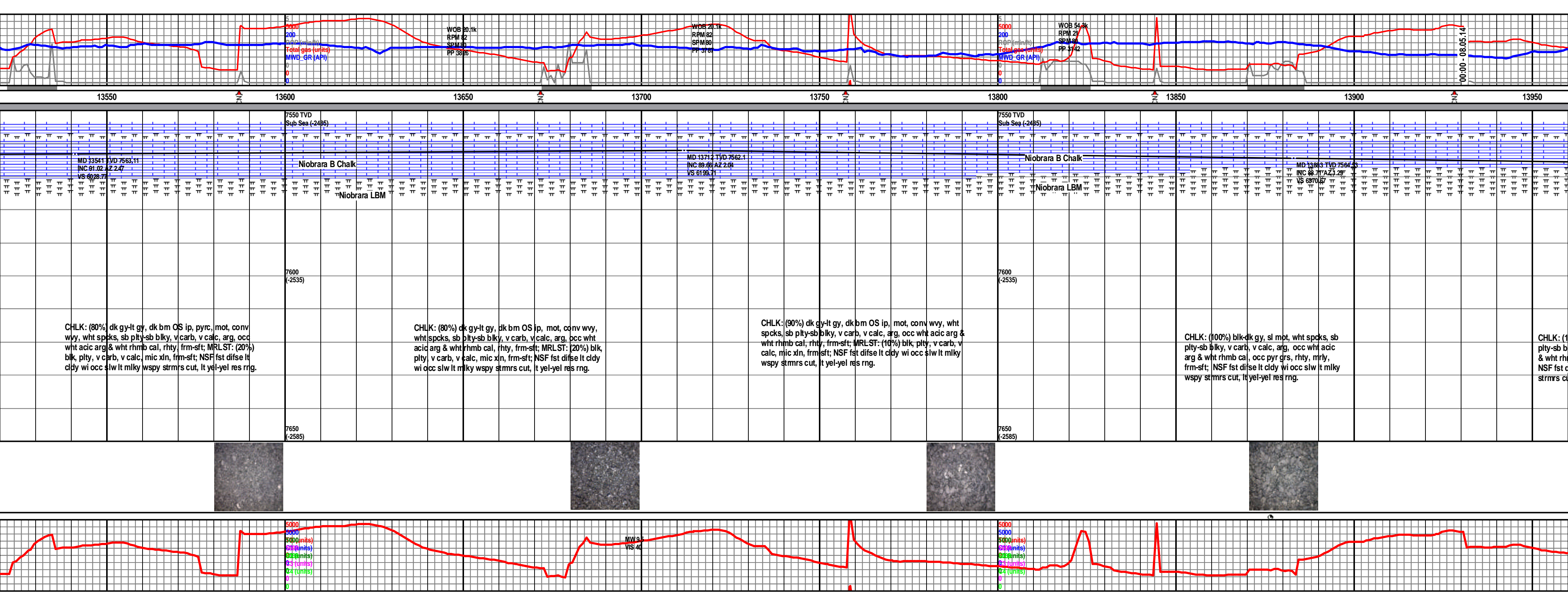


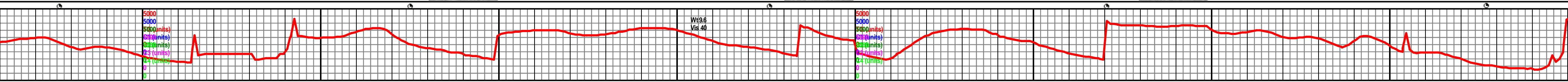
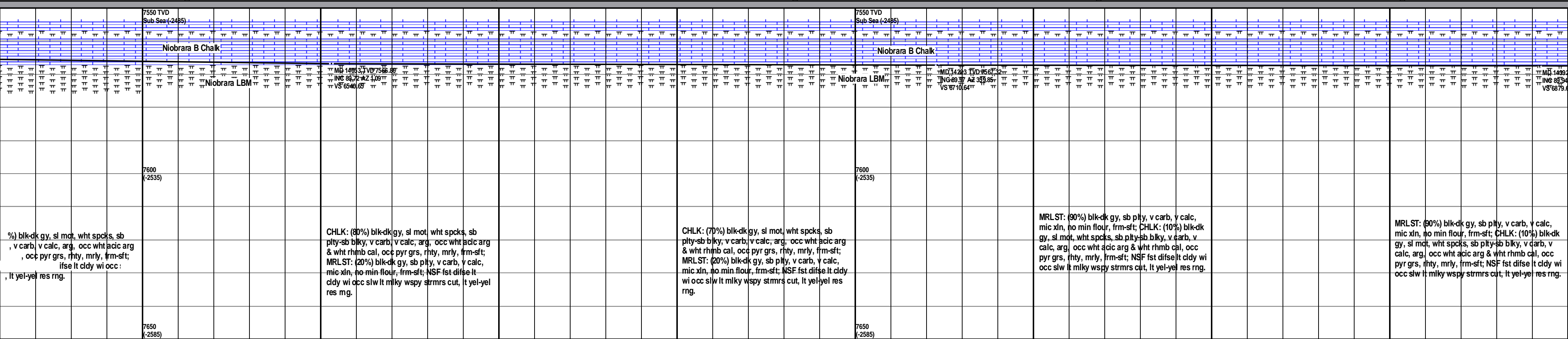




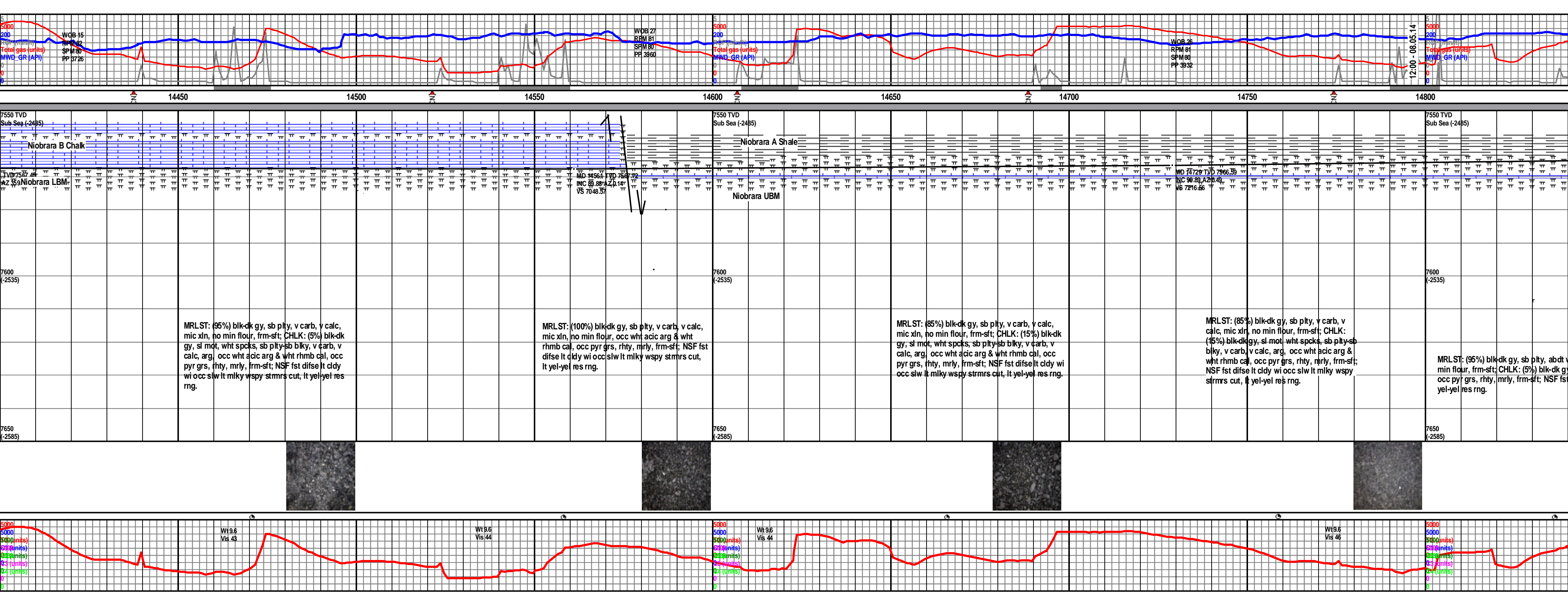














153

@ 1829 August 5,	
N 67W	
ck Rogers & Assoc.	