

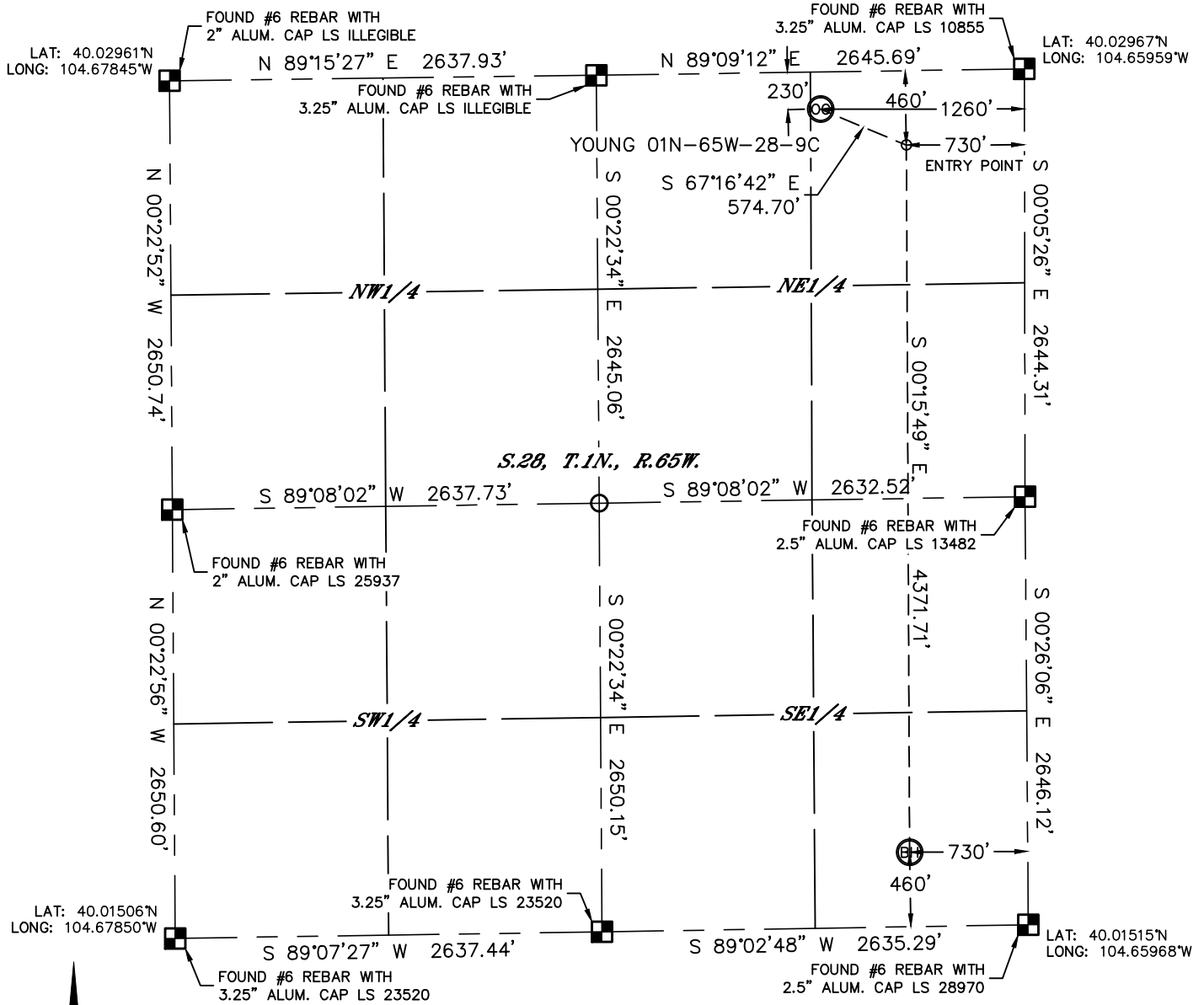


Lat40°, Inc. 1635 Foxtrail Drive, Suite 325 Loveland, CO 970-776-3321

# WELL LOCATION CERTIFICATE

SECTION: 28  
TOWNSHIP: 1N  
RANGE: 65W

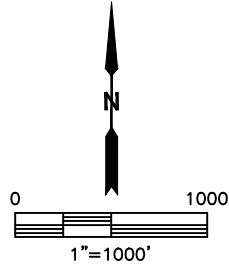
THIS MAP DOES NOT REPRESENT A BOUNDARY SURVEY



*S.28, T.1N., R.65W.*

In accordance with a request from Arthur Beecher with VERDAD OIL & GAS CORPORATION Lat40°, Inc. has determined the surface location of the YOUNG 01N-65W-28-9C to be 230' from the NORTH line and 1260' from the EAST line and the bottom hole to be 460' from the SOUTH line and 730' from the EAST line as measured at right angles from the section lines of Section 28, Township 1 North, Range 65 West of the Sixth Principal Meridian, County of Weld, State of Colorado.

I hereby state that this Well Location Certificate was prepared by me, or under my direct supervision, that the fieldwork was completed on 6/17/2014, for and on behalf of VERDAD OIL & GAS CORPORATION. That this is not a Land Survey Plat or an Improvement Survey Plat, and that it is not to be relied upon for establishment of fence, building, or other future improvement lines.



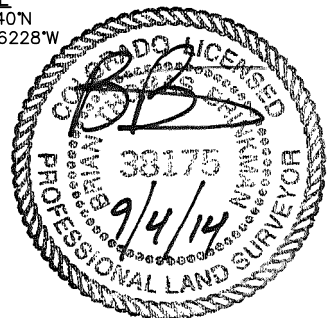
- NOTE:**
- 1) Bearings shown are Grid Bearings of the Colorado State Plane Coordinate System, North Zone, North American Datum 1983. The lineal dimensions as contained herein are based upon the "U.S. Survey Foot."
  - 2) Ground elevations are based on an observed GPS elevation (NAVD 1988 DATUM).
  - 3) IMPROVEMENTS: See LOCATION DRAWING for all visible improvements within 500' of disturbed area.
  - 4) SURFACE USE: CROP LAND
  - 5) INSTRUMENT OPERATOR: WYATT HALL
  - 6) NEAREST CULTURAL ITEMS:  
BUILDING: 943' NE  
BUILDING UNIT: 943' NE  
HIGH OCCUPANCY BUILDING UNIT: +5280'  
DESIGNATED OUTSIDE ACTIVITY AREA: +5280'  
PUBLIC ROAD: 211' N (CR 6)  
ABOVEGROUND UTILITY: 200' N  
RAILROAD: ±4692' NW  
PROPERTY LINE: 230' N

**SURFACE LOCATION**  
LAT: 40.02902°N  
LONG: 104.66409°W  
PDOP: 1.4  
ELEV: 5074'  
1/4,1/4: NENE

**BOTTOM HOLE**  
LAT: 40.01640°N  
LONG: 104.66228°W

**ENTRY POINT**  
LAT: 40.02840°N  
LONG: 104.66221°W

- LEGEND**
- = ALIQUOT MONUMENT AS DESCRIBED
  - = CALCULATED POSITION



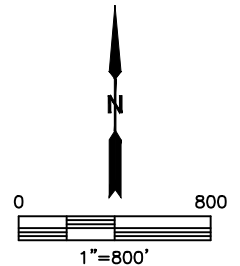
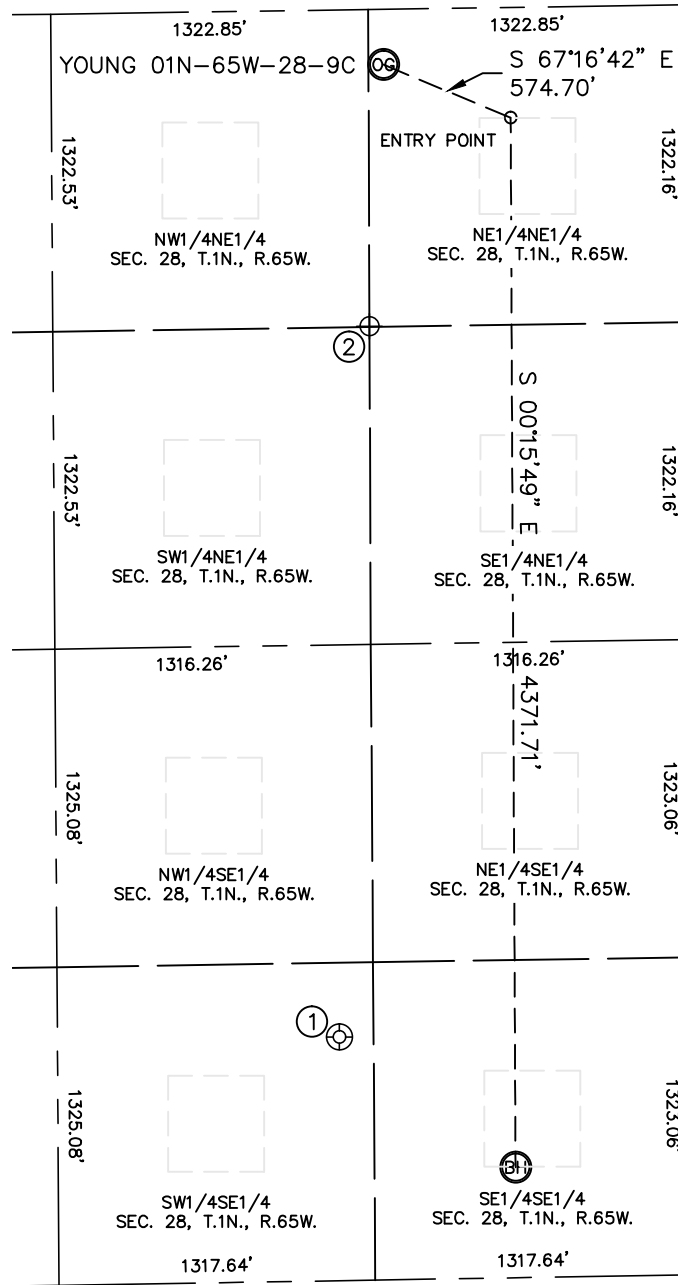
Brian T. Brinkman—On behalf of Lat40°, Inc.  
Colorado Licensed Professional Land Surveyor No. 38175  
DATE: rev9/3/2014  
PROJECT#: 2014106



# SITE SKETCH

YOUNG 01N-65W-28-9C

SECTION: 28  
TOWNSHIP: 1N  
RANGE: 65W



WELL NO.	WELL NAME	SHL FOOTAGE			SHL LAT°	SHL LONG°	PDOP	ELEV (FT.)	1/4/1/4
1	NECKIEN 1	1015	FSL	1460	FEL	40.01791	-104.66500	N/A	5054 SWSE
2	GLEN YOUNG 1	1320	FNL	1320	FEL	40.02592	-104.66434	N/A	5060 NWNE

NOTE: THE ABANDONED WELL DATA SHOWN IN RED ABOVE WAS OBTAINED FROM COGCC SCOUT CARDS. DUE TO INACCESSIBILITY, THE NECKIEN 1 SHUT IN WELL WAS NOT FIELD LOCATED

DATE: rev9/3/2014  
PROJECT#: 2014106