

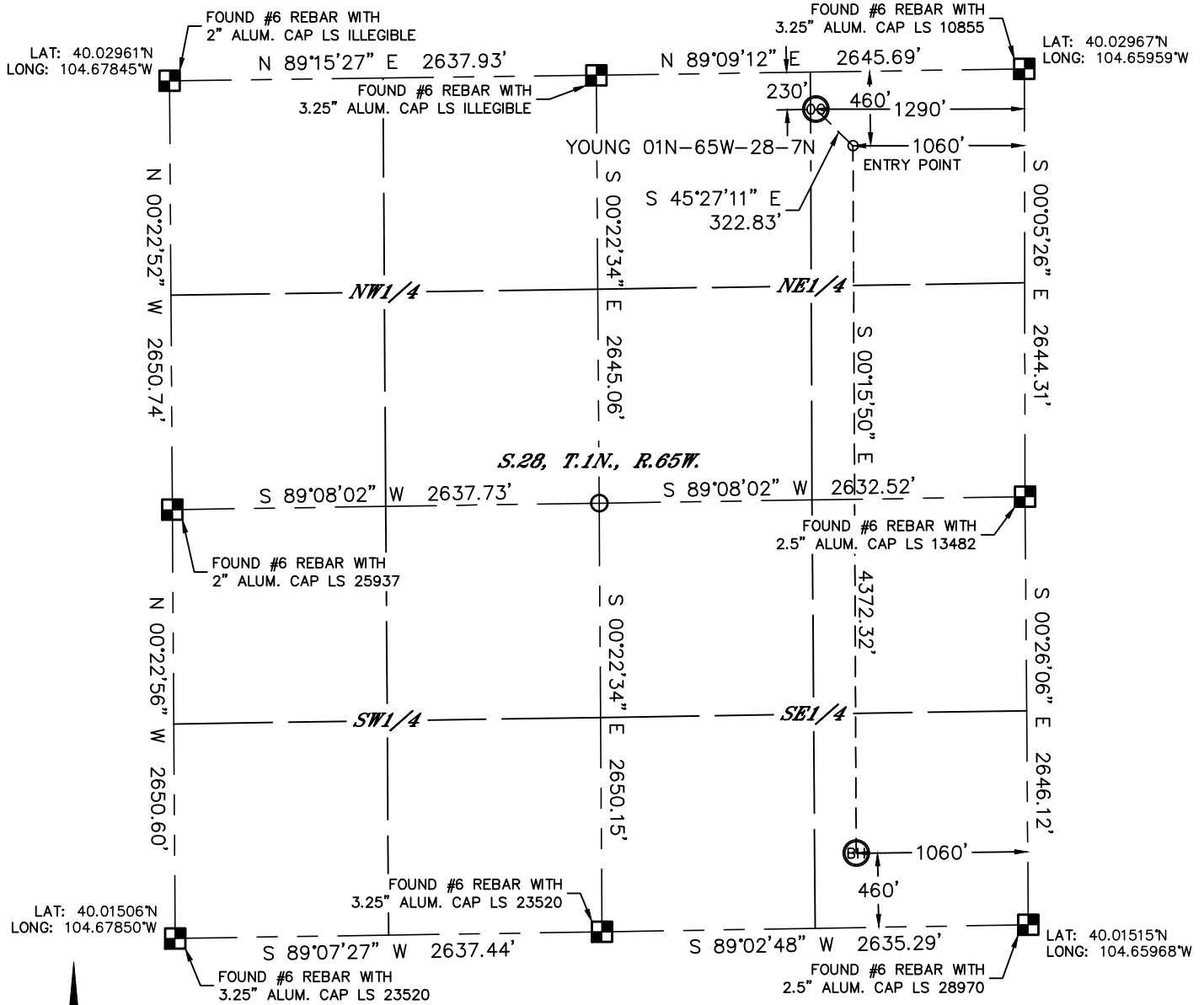


Lat40°, Inc. 1635 Foxtrail Drive, Suite 325 Loveland, CO 970-776-3321

WELL LOCATION CERTIFICATE

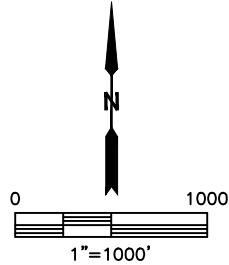
SECTION: 28
TOWNSHIP: 1N
RANGE: 65W

THIS MAP DOES NOT REPRESENT A BOUNDARY SURVEY



In accordance with a request from Arthur Beecher with VERDAD OIL & GAS CORPORATION Lat40°, Inc. has determined the surface location of the YOUNG 01N-65W-28-7N to be 230' from the NORTH line and 1290' from the EAST line and the bottom hole to be 460' from the SOUTH line and 1060' from the EAST line as measured at right angles from the section lines of Section 28, Township 1 North, Range 65 West of the Sixth Principal Meridian, County of Weld, State of Colorado.

I hereby state that this Well Location Certificate was prepared by me, or under my direct supervision, that the fieldwork was completed on 6/17/2014, for and on behalf of VERDAD OIL & GAS CORPORATION. That this is not a Land Survey Plat or an Improvement Survey Plat, and that it is not to be relied upon for establishment of fence, building, or other future improvement lines.



- NOTE:**
- 1) Bearings shown are Grid Bearings of the Colorado State Plane Coordinate System, North Zone, North American Datum 1983. The lineal dimensions as contained herein are based upon the "U.S. Survey Foot."
 - 2) Ground elevations are based on an observed GPS elevation (NAVD 1988 DATUM).
 - 3) IMPROVEMENTS: See LOCATION DRAWING for all visible improvements within 500' of disturbed area.
 - 4) SURFACE USE: CROP LAND
 - 5) INSTRUMENT OPERATOR: WYATT HALL
 - 6) NEAREST CULTURAL ITEMS:
BUILDING: 969' NE
BUILDING UNIT: 969' NE
HIGH OCCUPANCY BUILDING UNIT: +5280'
DESIGNATED OUTSIDE ACTIVITY AREA: +5280'
PUBLIC ROAD: 211' N (CR 6)
ABOVEGROUND UTILITY: 200' N
RAILROAD: ±4668' NW
PROPERTY LINE: 230' N

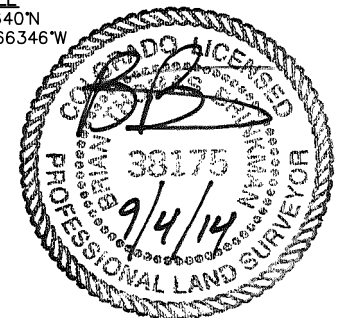
SURFACE LOCATION
LAT: 40.02902°N
LONG: 104.66420°W
PDOP: 1.3
ELEV: 5073'
1/4,1/4: NENE

ENTRY POINT
LAT: 40.02839°N
LONG: 104.66339°W

BOTTOM HOLE
LAT: 40.01640°N
LONG: 104.66346°W

LEGEND
 = ALIQUOT MONUMENT AS DESCRIBED
 = CALCULATED POSITION

Brian T. Brinkman—On behalf of Lat40°, Inc.
Colorado Licensed Professional
Land Surveyor No. 38175
DATE: rev9/3/2014
PROJECT#: 2014106

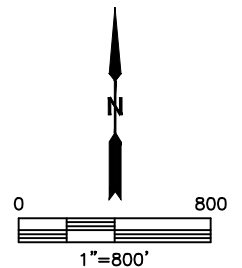
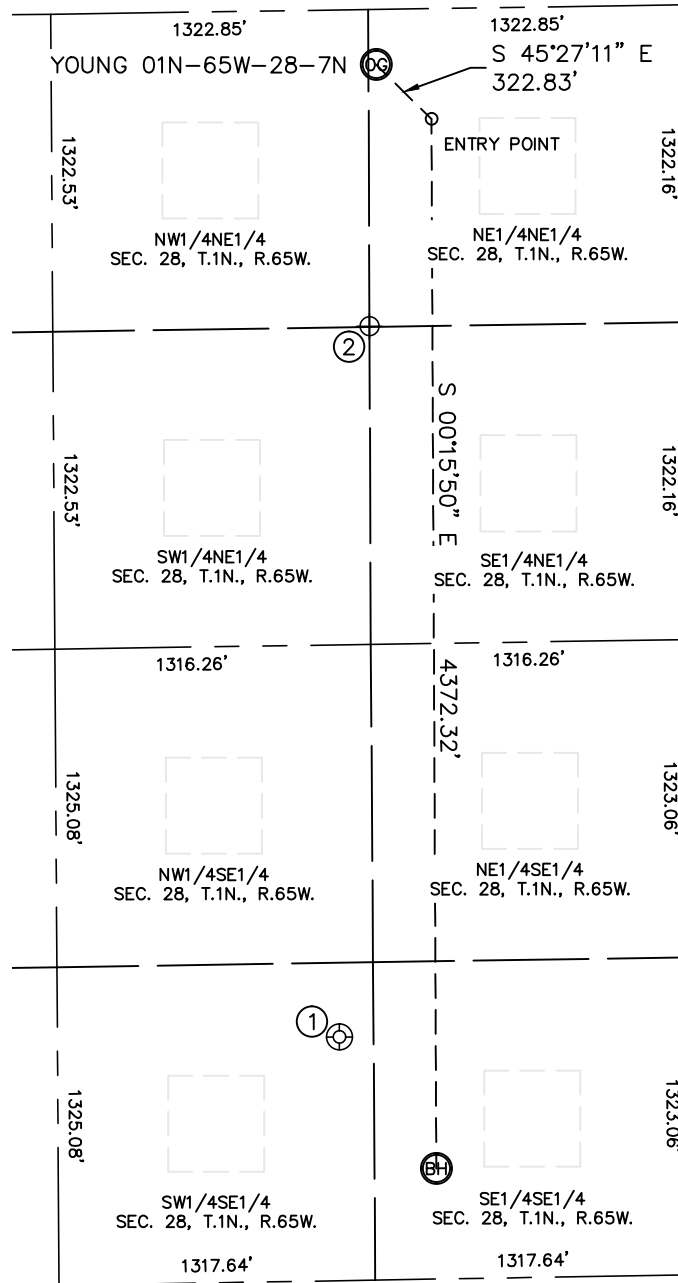




SITE SKETCH

YOUNG 01N-65W-28-7N

SECTION: 28
TOWNSHIP: 1N
RANGE: 65W



| WELL NO. | WELL NAME | SHL FOOTAGE | | | SHL LAT° | SHL LONG° | PDOP | ELEV (FT.) | 1/4/1/4 | |
|----------|--------------|-------------|-----|------|----------|-----------|------------|------------|---------|------|
| 1 | NECKIEN 1 | 1015 | FSL | 1460 | FEL | 40.01791 | -104.66500 | N/A | 5054 | SWSE |
| 2 | GLEN YOUNG 1 | 1320 | FNL | 1320 | FEL | 40.02592 | -104.66434 | N/A | 5060 | NWNE |

NOTE: THE ABANDONED WELL DATA SHOWN IN RED ABOVE WAS OBTAINED FROM COGCC SCOUT CARDS. DUE TO INACCESSIBILITY, THE NECKIEN 1 SHUT IN WELL WAS NOT FIELD LOCATED

DATE: rev9/3/2014
PROJECT#: 2014106