

8/7/2014

VIA ELECTRONIC TRANSMITTAL

Department of Natural Resources
Oil and Gas Conservation Commission
The Chancery Building
Attn: Matt Lepore
1120 Lincoln St., Suite 801
Denver, CO 80203

Re: **30 Day Certification Letter – Rule 318A.e**
Young 01N-65W-28 Pad
NENW Sec 28-T1N-R65W, 6th PM
Weld County, Colorado

Dear COGCC Director,

Verdad Oil and Gas Corporation (Verdad) hereby certifies to the Director that a thirty (30-day) notice has been given by certified mail to all owners in the proposed wellbore spacing unit consisting of 320-acres comprised of E/2 of Sec 28-T1N-R65W. We have not received any objections to such well location or proposed spacing unit, therefore Verdad hereby requests the Director to approve the proposed well.

If you should have any questions or concerns regarding this permit, please contact the undersigned at 214-838-2783.

Sincerely,



L. Arthur Beecherl, IV
Vice President of Operations
Verdad Oil and Gas Corporation

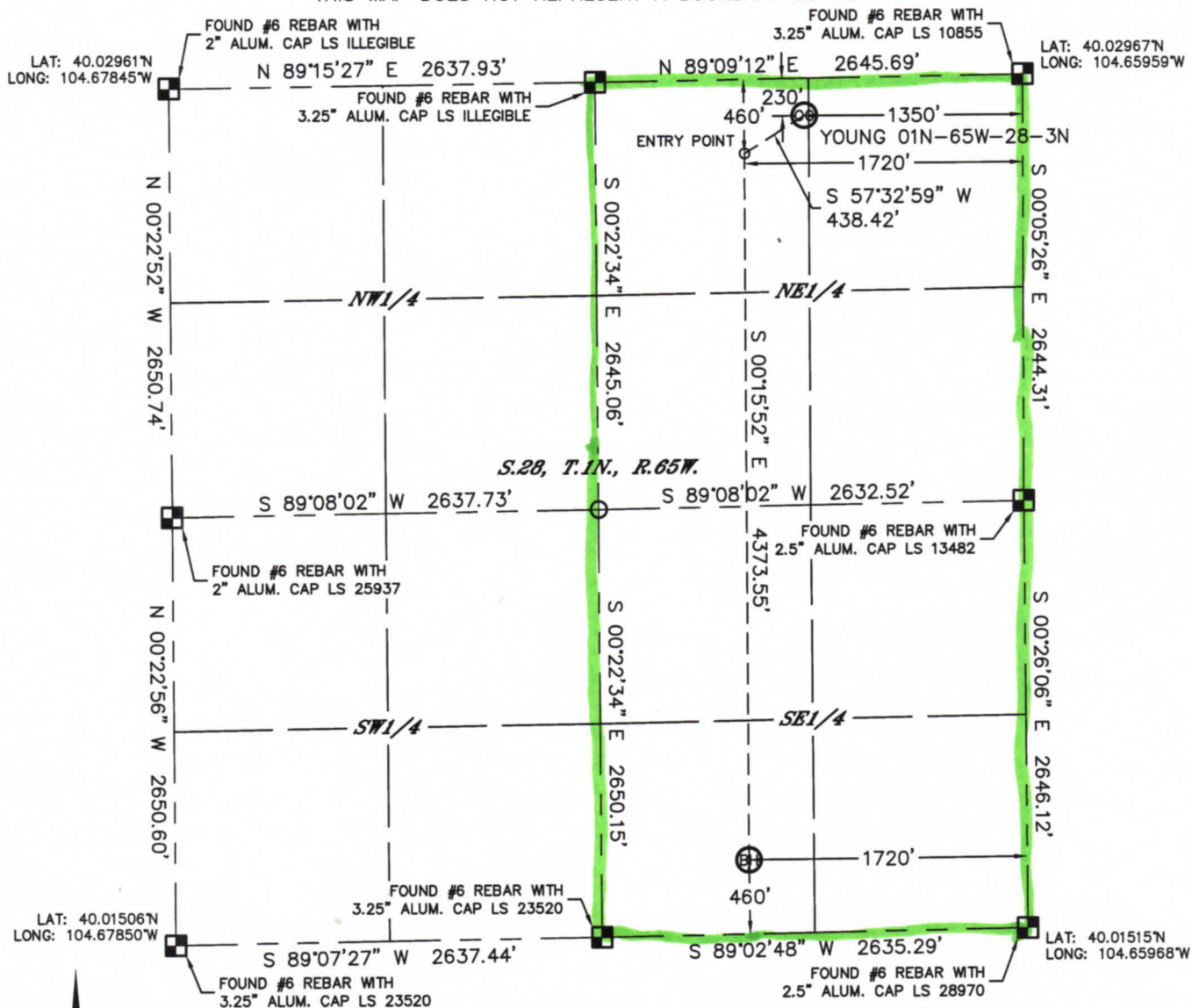


Lat40°, Inc. 1635 Foxtrail Drive, Suite 325 Loveland, CO 970-776-3321

WELL LOCATION CERTIFICATE

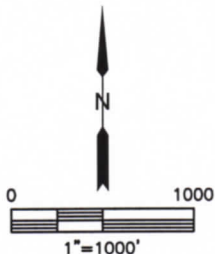
SECTION: 28
TOWNSHIP: 1N
RANGE: 65W

THIS MAP DOES NOT REPRESENT A BOUNDARY SURVEY



In accordance with a request from Arthur Beecher with VERDAD OIL & GAS CORPORATION Lat40°, Inc. has determined the surface location of the YOUNG 01N-65W-28-3N to be 230' from the NORTH line and 1350' from the EAST line and the bottom hole to be 460' from the SOUTH line and 1720' from the EAST line as measured at right angles from the section lines of Section 28, Township 1 North, Range 65 West of the Sixth Principal Meridian, County of Weld, State of Colorado.

I hereby state that this Well Location Certificate was prepared by me, or under my direct supervision, that the fieldwork was completed on 6/17/2014, for and on behalf of VERDAD OIL & GAS CORPORATION. That this is not a Land Survey Plat or an Improvement Survey Plat, and that it is not to be relied upon for establishment of fence, building, or other future improvement lines.



NOTE:

- 1) Bearings shown are Grid Bearings of the Colorado State Plane Coordinate System, North Zone, North American Datum 1983. The lineal dimensions as contained herein are based upon the "U.S. Survey Foot."
- 2) Ground elevations are based on an observed GPS elevation (NAVD 1988 DATUM).
- 3) IMPROVEMENTS: See LOCATION DRAWING for all visible improvements within 500' of disturbed area.
- 4) SURFACE USE: CROP LAND
- 5) INSTRUMENT OPERATOR: WYATT HALL
- 6) NEAREST CULTURAL ITEMS:
BUILDING: 1023' NE
BUILDING UNIT: 1023' NE
HIGH OCCUPANCY BUILDING UNIT: +5280'
DESIGNATED OUTSIDE ACTIVITY AREA: +5280'
PUBLIC ROAD: 212' N (CR 6)
ABOVEGROUND UTILITY: 200' N
RAILROAD: ±4620' NW
PROPERTY LINE: 230' N

SURFACE LOCATION

LAT: 40.02902°N
LONG: 104.66442°W
PDOP: 1.4
ELEV: 5071'
1/4,1/4: NWNE

BOTTOM HOLE

LAT: 40.01638°N
LONG: 104.66582°W

ENTRY POINT

LAT: 40.02838°N
LONG: 104.66574°W

LEGEND

- = ALIQUOT MONUMENT AS DESCRIBED
- = CALCULATED POSITION

Brian T. Brinkman—On behalf of Lat40°, Inc.
Colorado Licensed Professional
Land Surveyor No. 38175

DATE: rev9/3/2014
PROJECT#: 2014106

