

# Verdad Oil & Gas Corporation

Well Name: **Young 01N-65W-28-3N**

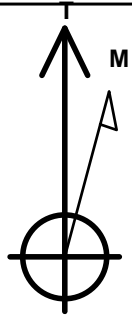
Surface Location: Young 01N-65W-28 Pad Sec.28-T1N-R65W  
 North American Datum 1983, US State Plane 1983, Colorado Northern Zone

Ground Elevation: 5071.0

+N/-S	+E/-W	Northing	Easting	Latitude	Longitude	Slot
0.0	0.0	1254520.49	3233987.66	40.029020	-104.664420	
Original Well Elev WELL @ 5084.0ft (Original Well Elev)						

## WELLBORE TARGET DETAILS

Name	TVD	+N/-S	+E/-W	Shape
SHL 230'FNL & 1350'FEL	1.0	0.0	0.0	Point
BHL 460'FSL & 1720'FEL	7244.0	-4604.6	-392.1	Point



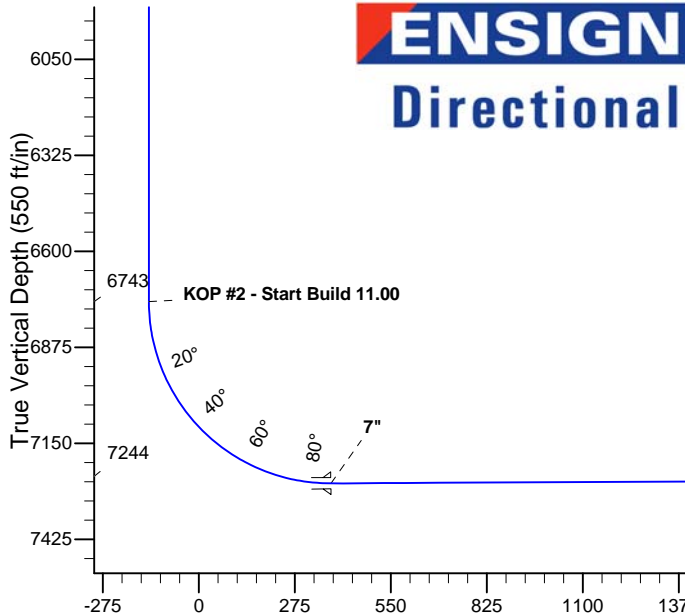
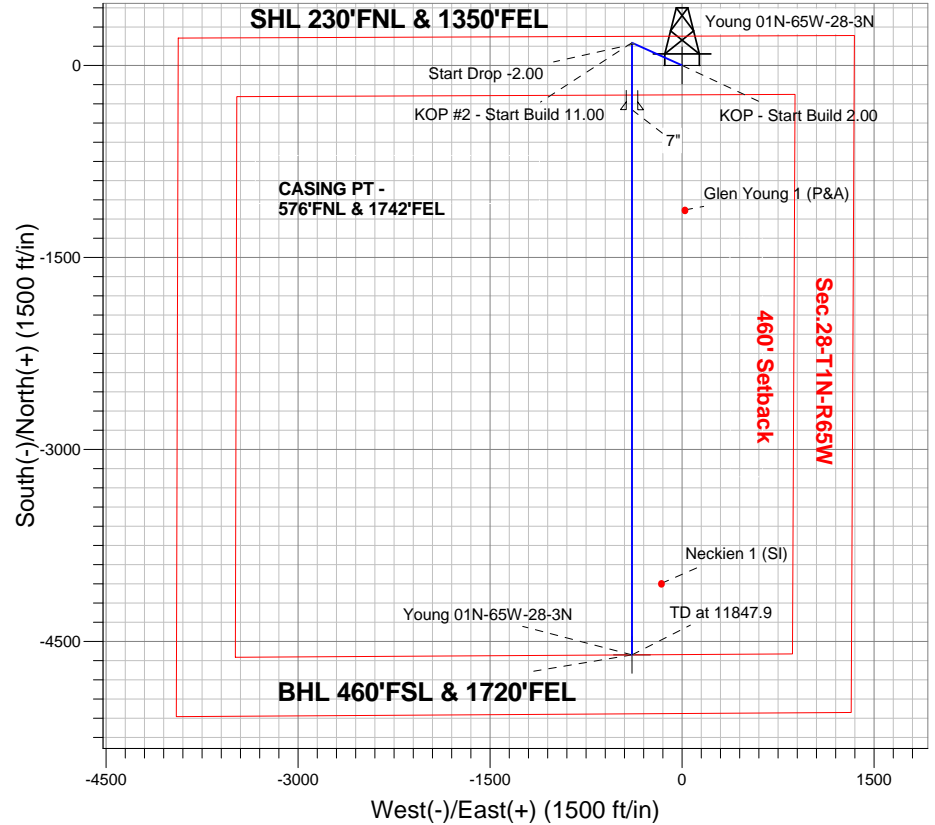
Young 01N-65W-28 Pad Sec.28-T1N-R65W  
 Young 01N-65W-28-3N  
 Plan #1 (8-29-14)

Azimuths to True North  
 Magnetic North: 8.35°

Magnetic Field  
 Strength: 52607.2snT  
 Dip Angle: 66.66°  
 Date: 8/29/2014  
 Model: IGRF2010

## ANNOTATIONS

TVD	MD	Annotation
1000.0	1000.0	KOP - Start Build 2.00
4444.9	4469.8	Start Drop -2.00
6743.2	6769.0	KOP #2 - Start Build 11.00
7244.0	11847.9	TD at 11847.9



## SECTION DETAILS

Sec	MD	Inc	Azi	TVD	+N/-S	+E/-W	DLeg	TFace	VSec	Target
1	0.0	0.00	0.00	0.0	0.0	0.0	0.00	0.00	0.0	
2	1000.0	0.00	0.00	1000.0	0.0	0.0	0.00	0.00	0.0	
3	1356.1	7.12	294.28	1355.1	9.1	-20.1	2.00	294.28	-7.3	
4	4469.8	7.12	294.28	4444.9	167.8	-372.0	0.00	0.00	-135.6	
5	4825.8	0.00	0.00	4800.0	176.9	-392.1	2.00	180.00	-143.0	
6	6769.0	0.00	0.00	6743.2	176.9	-392.1	0.00	0.00	-143.0	
7	7589.7	90.27	180.00	7264.1	-346.4	-392.1	11.00	180.00	378.4	
8	11847.9	90.27	180.00	7244.0	-4604.6	-392.1	0.00	0.00	4621.3	BHL 460'FSL & 1720'FEL

BHL 460'FSL & 1720'FEL

TD at 11847.9

Vertical Section at 184.87° (550 ft/in)



# **Verdad Oil & Gas Corporation**

**SEC.28-T1N-R65W**

**Young 01N-65W-28 Pad Sec.28-T1N-R65W**

**Young 01N-65W-28-3N**

**Wellbore #1**

**Plan: Plan #1 (8-29-14)**

## **Standard Planning Report**

**11 September, 2014**

<b>Database:</b>	Landmark	<b>Local Co-ordinate Reference:</b>	Well Young 01N-65W-28-3N
<b>Company:</b>	Verdad Oil & Gas Corporation	<b>TVD Reference:</b>	WELL @ 5084.0ft (Original Well Elev)
<b>Project:</b>	SEC.28-T1N-R65W	<b>MD Reference:</b>	WELL @ 5084.0ft (Original Well Elev)
<b>Site:</b>	Young 01N-65W-28 Pad Sec.28-T1N-R65W	<b>North Reference:</b>	True
<b>Well:</b>	Young 01N-65W-28-3N	<b>Survey Calculation Method:</b>	Minimum Curvature
<b>Wellbore:</b>	Wellbore #1		
<b>Design:</b>	Plan #1 (8-29-14)		

<b>Project</b>	SEC.28-T1N-R65W, Weld County, Colorado		
<b>Map System:</b>	US State Plane 1983	<b>System Datum:</b>	Mean Sea Level
<b>Geo Datum:</b>	North American Datum 1983		Using Well Reference Point
<b>Map Zone:</b>	Colorado Northern Zone		Using geodetic scale factor

<b>Site</b>	Young 01N-65W-28 Pad Sec.28-T1N-R65W				
<b>Site Position:</b>		<b>Northing:</b>	1,254,520.25 ft	<b>Latitude:</b>	40.029020
<b>From:</b>	Lat/Long	<b>Easting:</b>	3,233,959.66 ft	<b>Longitude:</b>	-104.664520
<b>Position Uncertainty:</b>	0.0 ft	<b>Slot Radius:</b>	"	<b>Grid Convergence:</b>	0.54 °

<b>Well</b>	Young 01N-65W-28-3N					
<b>Well Position</b>	<b>+N/-S</b>	0.0 ft	<b>Northing:</b>	1,254,520.49 ft	<b>Latitude:</b>	40.029020
	<b>+E/-W</b>	28.0 ft	<b>Easting:</b>	3,233,987.66 ft	<b>Longitude:</b>	-104.664420
<b>Position Uncertainty</b>		0.0 ft	<b>Wellhead Elevation:</b>	ft	<b>Ground Level:</b>	5,071.0 ft

<b>Wellbore</b>	Wellbore #1				
<b>Magnetics</b>	<b>Model Name</b>	<b>Sample Date</b>	<b>Declination (°)</b>	<b>Dip Angle (°)</b>	<b>Field Strength (nT)</b>
	IGRF2010	8/29/2014	8.35	66.66	52,607

<b>Design</b>	Plan #1 (8-29-14)			
<b>Audit Notes:</b>				
<b>Version:</b>	<b>Phase:</b>	PROTOTYPE	<b>Tie On Depth:</b>	0.0
<b>Vertical Section:</b>	<b>Depth From (TVD) (ft)</b>	<b>+N/-S (ft)</b>	<b>+E/-W (ft)</b>	<b>Direction (°)</b>
	0.0	0.0	0.0	184.87

<b>Plan Sections</b>										
Measured Depth (ft)	Inclination (°)	Azimuth (°)	Vertical Depth (ft)	+N/-S (ft)	+E/-W (ft)	Dogleg Rate (°/100ft)	Build Rate (°/100ft)	Turn Rate (°/100ft)	TFO (°)	Target
0.0	0.00	0.00	0.0	0.0	0.0	0.00	0.00	0.00	0.00	
1,000.0	0.00	0.00	1,000.0	0.0	0.0	0.00	0.00	0.00	0.00	
1,356.1	7.12	294.28	1,355.1	9.1	-20.1	2.00	2.00	0.00	294.28	
4,469.8	7.12	294.28	4,444.9	167.8	-372.0	0.00	0.00	0.00	0.00	
4,825.8	0.00	0.00	4,800.0	176.9	-392.1	2.00	-2.00	0.00	180.00	
6,769.0	0.00	0.00	6,743.2	176.9	-392.1	0.00	0.00	0.00	0.00	
7,589.7	90.27	180.00	7,264.1	-346.4	-392.1	11.00	11.00	0.00	180.00	
11,847.9	90.27	180.00	7,244.0	-4,604.6	-392.1	0.00	0.00	0.00	0.00	BHL 460'FSL & 172

<b>Database:</b>	Landmark	<b>Local Co-ordinate Reference:</b>	Well Young 01N-65W-28-3N
<b>Company:</b>	Verdad Oil & Gas Corporation	<b>TVD Reference:</b>	WELL @ 5084.0ft (Original Well Elev)
<b>Project:</b>	SEC.28-T1N-R65W	<b>MD Reference:</b>	WELL @ 5084.0ft (Original Well Elev)
<b>Site:</b>	Young 01N-65W-28 Pad Sec.28-T1N-R65W	<b>North Reference:</b>	True
<b>Well:</b>	Young 01N-65W-28-3N	<b>Survey Calculation Method:</b>	Minimum Curvature
<b>Wellbore:</b>	Wellbore #1		
<b>Design:</b>	Plan #1 (8-29-14)		

Planned Survey									
Measured Depth (ft)	Inclination (°)	Azimuth (°)	Vertical Depth (ft)	+N/-S (ft)	+E/-W (ft)	Vertical Section (ft)	Dogleg Rate (°/100ft)	Build Rate (°/100ft)	Turn Rate (°/100ft)
0.0	0.00	0.00	0.0	0.0	0.0	0.0	0.00	0.00	0.00
100.0	0.00	0.00	100.0	0.0	0.0	0.0	0.00	0.00	0.00
200.0	0.00	0.00	200.0	0.0	0.0	0.0	0.00	0.00	0.00
300.0	0.00	0.00	300.0	0.0	0.0	0.0	0.00	0.00	0.00
400.0	0.00	0.00	400.0	0.0	0.0	0.0	0.00	0.00	0.00
500.0	0.00	0.00	500.0	0.0	0.0	0.0	0.00	0.00	0.00
600.0	0.00	0.00	600.0	0.0	0.0	0.0	0.00	0.00	0.00
700.0	0.00	0.00	700.0	0.0	0.0	0.0	0.00	0.00	0.00
800.0	0.00	0.00	800.0	0.0	0.0	0.0	0.00	0.00	0.00
900.0	0.00	0.00	900.0	0.0	0.0	0.0	0.00	0.00	0.00
1,000.0	0.00	0.00	1,000.0	0.0	0.0	0.0	0.00	0.00	0.00
<b>KOP - Start Build 2.00</b>									
1,100.0	2.00	294.28	1,100.0	0.7	-1.6	-0.6	2.00	2.00	0.00
1,200.0	4.00	294.28	1,199.8	2.9	-6.4	-2.3	2.00	2.00	0.00
1,300.0	6.00	294.28	1,299.5	6.5	-14.3	-5.2	2.00	2.00	0.00
1,356.1	7.12	294.28	1,355.1	9.1	-20.1	-7.3	2.00	2.00	0.00
1,400.0	7.12	294.28	1,398.7	11.3	-25.1	-9.2	0.00	0.00	0.00
1,500.0	7.12	294.28	1,498.0	16.4	-36.4	-13.3	0.00	0.00	0.00
1,600.0	7.12	294.28	1,597.2	21.5	-47.7	-17.4	0.00	0.00	0.00
1,700.0	7.12	294.28	1,696.4	26.6	-59.0	-21.5	0.00	0.00	0.00
1,800.0	7.12	294.28	1,795.7	31.7	-70.3	-25.6	0.00	0.00	0.00
1,900.0	7.12	294.28	1,894.9	36.8	-81.6	-29.8	0.00	0.00	0.00
2,000.0	7.12	294.28	1,994.1	41.9	-92.9	-33.9	0.00	0.00	0.00
2,100.0	7.12	294.28	2,093.3	47.0	-104.2	-38.0	0.00	0.00	0.00
2,200.0	7.12	294.28	2,192.6	52.1	-115.5	-42.1	0.00	0.00	0.00
2,300.0	7.12	294.28	2,291.8	57.2	-126.8	-46.2	0.00	0.00	0.00
2,400.0	7.12	294.28	2,391.0	62.3	-138.1	-50.4	0.00	0.00	0.00
2,500.0	7.12	294.28	2,490.3	67.4	-149.4	-54.5	0.00	0.00	0.00
2,600.0	7.12	294.28	2,589.5	72.5	-160.7	-58.6	0.00	0.00	0.00
2,700.0	7.12	294.28	2,688.7	77.6	-172.0	-62.7	0.00	0.00	0.00
2,800.0	7.12	294.28	2,787.9	82.7	-183.3	-66.8	0.00	0.00	0.00
2,900.0	7.12	294.28	2,887.2	87.8	-194.6	-71.0	0.00	0.00	0.00
3,000.0	7.12	294.28	2,986.4	92.9	-205.9	-75.1	0.00	0.00	0.00
3,100.0	7.12	294.28	3,085.6	98.0	-217.2	-79.2	0.00	0.00	0.00
3,200.0	7.12	294.28	3,184.9	103.1	-228.5	-83.3	0.00	0.00	0.00
3,300.0	7.12	294.28	3,284.1	108.2	-239.8	-87.4	0.00	0.00	0.00
3,400.0	7.12	294.28	3,383.3	113.3	-251.1	-91.6	0.00	0.00	0.00
3,500.0	7.12	294.28	3,482.5	118.4	-262.4	-95.7	0.00	0.00	0.00
3,600.0	7.12	294.28	3,581.8	123.5	-273.7	-99.8	0.00	0.00	0.00
3,700.0	7.12	294.28	3,681.0	128.6	-285.0	-103.9	0.00	0.00	0.00
3,800.0	7.12	294.28	3,780.2	133.7	-296.3	-108.0	0.00	0.00	0.00
3,900.0	7.12	294.28	3,879.5	138.8	-307.6	-112.2	0.00	0.00	0.00
4,000.0	7.12	294.28	3,978.7	143.9	-318.9	-116.3	0.00	0.00	0.00
4,100.0	7.12	294.28	4,077.9	149.0	-330.2	-120.4	0.00	0.00	0.00
4,200.0	7.12	294.28	4,177.1	154.1	-341.5	-124.5	0.00	0.00	0.00
4,300.0	7.12	294.28	4,276.4	159.2	-352.8	-128.7	0.00	0.00	0.00
4,400.0	7.12	294.28	4,375.6	164.3	-364.1	-132.8	0.00	0.00	0.00
4,469.8	7.12	294.28	4,444.9	167.8	-372.0	-135.6	0.00	0.00	0.00
<b>Start Drop -2.00</b>									
4,500.0	6.52	294.28	4,474.9	169.3	-375.3	-136.8	2.00	-2.00	0.00
4,600.0	4.52	294.28	4,574.4	173.2	-384.0	-140.0	2.00	-2.00	0.00
4,700.0	2.52	294.28	4,674.2	175.8	-389.6	-142.1	2.00	-2.00	0.00
4,800.0	0.52	294.28	4,774.2	176.9	-392.0	-143.0	2.00	-2.00	0.00
4,825.8	0.00	0.00	4,800.0	176.9	-392.1	-143.0	2.00	-2.00	0.00

<b>Database:</b>	Landmark	<b>Local Co-ordinate Reference:</b>	Well Young 01N-65W-28-3N
<b>Company:</b>	Verdad Oil & Gas Corporation	<b>TVD Reference:</b>	WELL @ 5084.0ft (Original Well Elev)
<b>Project:</b>	SEC.28-T1N-R65W	<b>MD Reference:</b>	WELL @ 5084.0ft (Original Well Elev)
<b>Site:</b>	Young 01N-65W-28 Pad Sec.28-T1N-R65W	<b>North Reference:</b>	True
<b>Well:</b>	Young 01N-65W-28-3N	<b>Survey Calculation Method:</b>	Minimum Curvature
<b>Wellbore:</b>	Wellbore #1		
<b>Design:</b>	Plan #1 (8-29-14)		

Planned Survey									
Measured Depth (ft)	Inclination (°)	Azimuth (°)	Vertical Depth (ft)	+N/-S (ft)	+E/-W (ft)	Vertical Section (ft)	Dogleg Rate (°/100ft)	Build Rate (°/100ft)	Turn Rate (°/100ft)
4,900.0	0.00	0.00	4,874.2	176.9	-392.1	-143.0	0.00	0.00	0.00
5,000.0	0.00	0.00	4,974.2	176.9	-392.1	-143.0	0.00	0.00	0.00
5,100.0	0.00	0.00	5,074.2	176.9	-392.1	-143.0	0.00	0.00	0.00
5,200.0	0.00	0.00	5,174.2	176.9	-392.1	-143.0	0.00	0.00	0.00
5,300.0	0.00	0.00	5,274.2	176.9	-392.1	-143.0	0.00	0.00	0.00
5,400.0	0.00	0.00	5,374.2	176.9	-392.1	-143.0	0.00	0.00	0.00
5,500.0	0.00	0.00	5,474.2	176.9	-392.1	-143.0	0.00	0.00	0.00
5,600.0	0.00	0.00	5,574.2	176.9	-392.1	-143.0	0.00	0.00	0.00
5,700.0	0.00	0.00	5,674.2	176.9	-392.1	-143.0	0.00	0.00	0.00
5,800.0	0.00	0.00	5,774.2	176.9	-392.1	-143.0	0.00	0.00	0.00
5,900.0	0.00	0.00	5,874.2	176.9	-392.1	-143.0	0.00	0.00	0.00
6,000.0	0.00	0.00	5,974.2	176.9	-392.1	-143.0	0.00	0.00	0.00
6,100.0	0.00	0.00	6,074.2	176.9	-392.1	-143.0	0.00	0.00	0.00
6,200.0	0.00	0.00	6,174.2	176.9	-392.1	-143.0	0.00	0.00	0.00
6,300.0	0.00	0.00	6,274.2	176.9	-392.1	-143.0	0.00	0.00	0.00
6,400.0	0.00	0.00	6,374.2	176.9	-392.1	-143.0	0.00	0.00	0.00
6,500.0	0.00	0.00	6,474.2	176.9	-392.1	-143.0	0.00	0.00	0.00
6,600.0	0.00	0.00	6,574.2	176.9	-392.1	-143.0	0.00	0.00	0.00
6,700.0	0.00	0.00	6,674.2	176.9	-392.1	-143.0	0.00	0.00	0.00
6,769.0	0.00	0.00	6,743.2	176.9	-392.1	-143.0	0.00	0.00	0.00
<b>KOP #2 - Start Build 11.00</b>									
6,800.0	3.40	180.00	6,774.1	176.0	-392.1	-142.1	10.98	10.98	0.00
6,900.0	14.40	180.00	6,872.8	160.5	-392.1	-126.7	11.00	11.00	0.00
7,000.0	25.40	180.00	6,966.7	126.5	-392.1	-92.8	11.00	11.00	0.00
7,100.0	36.40	180.00	7,052.3	75.3	-392.1	-41.7	11.00	11.00	0.00
7,200.0	47.40	180.00	7,126.6	8.6	-392.1	24.7	11.00	11.00	0.00
7,300.0	58.40	180.00	7,186.9	-71.1	-392.1	104.1	11.00	11.00	0.00
7,400.0	69.40	180.00	7,230.8	-160.7	-392.1	193.4	11.00	11.00	0.00
7,500.0	80.40	180.00	7,256.8	-257.1	-392.1	289.5	11.00	11.00	0.00
7,589.7	90.27	180.00	7,264.1	-346.4	-392.1	378.5	11.00	11.00	0.00
<b>7"</b>									
7,600.0	90.27	180.00	7,264.0	-356.7	-392.1	388.7	0.00	0.00	0.00
7,700.0	90.27	180.00	7,263.5	-456.7	-392.1	488.4	0.00	0.00	0.00
7,800.0	90.27	180.00	7,263.1	-556.7	-392.1	588.0	0.00	0.00	0.00
7,900.0	90.27	180.00	7,262.6	-656.7	-392.1	687.6	0.00	0.00	0.00
8,000.0	90.27	180.00	7,262.1	-756.7	-392.1	787.3	0.00	0.00	0.00
8,100.0	90.27	180.00	7,261.7	-856.7	-392.1	886.9	0.00	0.00	0.00
8,200.0	90.27	180.00	7,261.2	-956.7	-392.1	986.6	0.00	0.00	0.00
8,300.0	90.27	180.00	7,260.7	-1,056.7	-392.1	1,086.2	0.00	0.00	0.00
8,400.0	90.27	180.00	7,260.2	-1,156.7	-392.1	1,185.8	0.00	0.00	0.00
8,500.0	90.27	180.00	7,259.8	-1,256.7	-392.1	1,285.5	0.00	0.00	0.00
8,600.0	90.27	180.00	7,259.3	-1,356.7	-392.1	1,385.1	0.00	0.00	0.00
8,700.0	90.27	180.00	7,258.8	-1,456.7	-392.1	1,484.7	0.00	0.00	0.00
8,800.0	90.27	180.00	7,258.4	-1,556.7	-392.1	1,584.4	0.00	0.00	0.00
8,900.0	90.27	180.00	7,257.9	-1,656.7	-392.1	1,684.0	0.00	0.00	0.00
9,000.0	90.27	180.00	7,257.4	-1,756.7	-392.1	1,783.7	0.00	0.00	0.00
9,100.0	90.27	180.00	7,256.9	-1,856.7	-392.1	1,883.3	0.00	0.00	0.00
9,200.0	90.27	180.00	7,256.5	-1,956.7	-392.1	1,982.9	0.00	0.00	0.00
9,300.0	90.27	180.00	7,256.0	-2,056.7	-392.1	2,082.6	0.00	0.00	0.00
9,400.0	90.27	180.00	7,255.5	-2,156.7	-392.1	2,182.2	0.00	0.00	0.00
9,500.0	90.27	180.00	7,255.1	-2,256.7	-392.1	2,281.8	0.00	0.00	0.00
9,600.0	90.27	180.00	7,254.6	-2,356.7	-392.1	2,381.5	0.00	0.00	0.00
9,700.0	90.27	180.00	7,254.1	-2,456.7	-392.1	2,481.1	0.00	0.00	0.00
9,800.0	90.27	180.00	7,253.7	-2,556.7	-392.1	2,580.8	0.00	0.00	0.00

<b>Database:</b>	Landmark	<b>Local Co-ordinate Reference:</b>	Well Young 01N-65W-28-3N
<b>Company:</b>	Verdad Oil & Gas Corporation	<b>TVD Reference:</b>	WELL @ 5084.0ft (Original Well Elev)
<b>Project:</b>	SEC.28-T1N-R65W	<b>MD Reference:</b>	WELL @ 5084.0ft (Original Well Elev)
<b>Site:</b>	Young 01N-65W-28 Pad Sec.28-T1N-R65W	<b>North Reference:</b>	True
<b>Well:</b>	Young 01N-65W-28-3N	<b>Survey Calculation Method:</b>	Minimum Curvature
<b>Wellbore:</b>	Wellbore #1		
<b>Design:</b>	Plan #1 (8-29-14)		

Planned Survey										
Measured Depth (ft)	Inclination (°)	Azimuth (°)	Vertical Depth (ft)	+N/-S (ft)	+E/-W (ft)	Vertical Section (ft)	Dogleg Rate (°/100ft)	Build Rate (°/100ft)	Turn Rate (°/100ft)	
9,900.0	90.27	180.00	7,253.2	-2,656.7	-392.1	2,680.4	0.00	0.00	0.00	
10,000.0	90.27	180.00	7,252.7	-2,756.7	-392.1	2,780.0	0.00	0.00	0.00	
10,100.0	90.27	180.00	7,252.2	-2,856.7	-392.1	2,879.7	0.00	0.00	0.00	
10,200.0	90.27	180.00	7,251.8	-2,956.7	-392.1	2,979.3	0.00	0.00	0.00	
10,300.0	90.27	180.00	7,251.3	-3,056.7	-392.1	3,079.0	0.00	0.00	0.00	
10,400.0	90.27	180.00	7,250.8	-3,156.7	-392.1	3,178.6	0.00	0.00	0.00	
10,500.0	90.27	180.00	7,250.4	-3,256.7	-392.1	3,278.2	0.00	0.00	0.00	
10,600.0	90.27	180.00	7,249.9	-3,356.7	-392.1	3,377.9	0.00	0.00	0.00	
10,700.0	90.27	180.00	7,249.4	-3,456.7	-392.1	3,477.5	0.00	0.00	0.00	
10,800.0	90.27	180.00	7,248.9	-3,556.7	-392.1	3,577.1	0.00	0.00	0.00	
10,900.0	90.27	180.00	7,248.5	-3,656.7	-392.1	3,676.8	0.00	0.00	0.00	
11,000.0	90.27	180.00	7,248.0	-3,756.7	-392.1	3,776.4	0.00	0.00	0.00	
11,100.0	90.27	180.00	7,247.5	-3,856.7	-392.1	3,876.1	0.00	0.00	0.00	
11,200.0	90.27	180.00	7,247.1	-3,956.7	-392.1	3,975.7	0.00	0.00	0.00	
11,300.0	90.27	180.00	7,246.6	-4,056.7	-392.1	4,075.3	0.00	0.00	0.00	
11,400.0	90.27	180.00	7,246.1	-4,156.7	-392.1	4,175.0	0.00	0.00	0.00	
11,500.0	90.27	180.00	7,245.6	-4,256.7	-392.1	4,274.6	0.00	0.00	0.00	
11,600.0	90.27	180.00	7,245.2	-4,356.7	-392.1	4,374.3	0.00	0.00	0.00	
11,700.0	90.27	180.00	7,244.7	-4,456.7	-392.1	4,473.9	0.00	0.00	0.00	
11,800.0	90.27	180.00	7,244.2	-4,556.7	-392.1	4,573.5	0.00	0.00	0.00	
11,847.9	90.27	180.00	7,244.0	-4,604.6	-392.1	4,621.3	0.00	0.00	0.00	

Targets										
Target Name	Dip Angle (°)	Dip Dir. (°)	TVD (ft)	+N/-S (ft)	+E/-W (ft)	Northing (ft)	Easting (ft)	Latitude	Longitude	
SHL 230'FNL & 1350' - hit/miss target - Shape - Point	0.00	0.00	1.0	0.0	0.0	1,254,520.51	3,233,987.66	40.029020	-104.664420	
BHL 460'FSL & 1720' - plan hits target center - Point	0.00	0.00	7,244.0	-4,604.6	-392.1	1,249,912.59	3,233,638.95	40.016380	-104.665820	

Casing Points						
Measured Depth (ft)	Vertical Depth (ft)	Name	Casing Diameter (")	Hole Diameter (")		
7,589.7	7,264.1	7"	7	7-1/2		

Plan Annotations					
Measured Depth (ft)	Vertical Depth (ft)	Local Coordinates		Comment	
		+N/-S (ft)	+E/-W (ft)		
1,000.0	1,000.0	0.0	0.0	KOP - Start Build 2.00	
4,469.8	4,444.9	9.1	-20.1	Start Drop -2.00	
6,769.0	6,743.2	167.8	-372.0	KOP #2 - Start Build 11.00	
11,847.9	7,244.0	176.9	-392.1	TD at 11847.9	



**Directional**

# **Verdad Oil & Gas Corporation**

**SEC.28-T1N-R65W**

**Young 01N-65W-28 Pad Sec.28-T1N-R65W**

**Young 01N-65W-28-3N**

**Wellbore #1**

**Plan #1 (8-29-14)**

## **Anticollision Report**

**11 September, 2014**

<b>Company:</b>	Verdad Oil & Gas Corporation	<b>Local Co-ordinate Reference:</b>	Well Young 01N-65W-28-3N
<b>Project:</b>	SEC.28-T1N-R65W	<b>TVD Reference:</b>	WELL @ 5084.0ft (Original Well Elev)
<b>Reference Site:</b>	Young 01N-65W-28 Pad Sec.28-T1N-R65W	<b>MD Reference:</b>	WELL @ 5084.0ft (Original Well Elev)
<b>Site Error:</b>	0.0ft	<b>North Reference:</b>	True
<b>Reference Well:</b>	Young 01N-65W-28-3N	<b>Survey Calculation Method:</b>	Minimum Curvature
<b>Well Error:</b>	0.0ft	<b>Output errors are at</b>	2.00 sigma
<b>Reference Wellbore</b>	Wellbore #1	<b>Database:</b>	Landmark
<b>Reference Design:</b>	Plan #1 (8-29-14)	<b>Offset TVD Reference:</b>	Offset Datum

<b>Reference</b>	Plan #1 (8-29-14)		
<b>Filter type:</b>	NO GLOBAL FILTER: Using user defined selection & filtering criteria		
<b>Interpolation Method:</b>	MD Interval 100.0ft	<b>Error Model:</b>	ISCWSA
<b>Depth Range:</b>	Unlimited	<b>Scan Method:</b>	Closest Approach 3D
<b>Results Limited by:</b>	Maximum center-center distance of 1,000.0ft	<b>Error Surface:</b>	Elliptical Conic
<b>Warning Levels Evaluated at:</b>	2.00 Sigma		

<b>Survey Tool Program</b>	Date 9/11/2014			
<b>From (ft)</b>	<b>To (ft)</b>	<b>Survey (Wellbore)</b>	<b>Tool Name</b>	<b>Description</b>
0.0	11,847.9	Plan #1 (8-29-14) (Wellbore #1)	MWD	MWD - Standard

Site Name	Reference Measured Depth (ft)	Offset Measured Depth (ft)	Distance Between Centres (ft)	Distance Between Ellipses (ft)	Separation Factor	Warning
<b>Existing Wells Sec.28-T1N-R65W</b>						
Glen Young 1 (P&A) - Wellbore #1 - Wellbore #1	8,372.6	7,236.4	414.5	242.7	2.413	CC, ES
Glen Young 1 (P&A) - Wellbore #1 - Wellbore #1	8,400.0	7,236.2	415.4	243.2	2.412	SF
Neckien 1 (SI) - Wellbore #1 - Wellbore #1	11,290.5	7,216.6	229.7	5.9	1.026	Level 2, CC, ES, SF
<b>Young 01N-65W-28 Pad Sec.28-T1N-R65W</b>						
Young 01N-65W-28-1C - Wellbore #1 - Plan #1 (8-29-14)	200.0	199.0	28.0	27.3	41.670	CC, ES
Young 01N-65W-28-1C - Wellbore #1 - Plan #1 (8-29-14)	11,848.6	12,078.8	392.1	237.2	2.532	SF
Young 01N-65W-28-2N - Wellbore #1 - Plan #1 (8-29-14)	400.0	399.0	14.0	12.4	8.912	CC
Young 01N-65W-28-2N - Wellbore #1 - Plan #1 (8-29-14)	11,848.6	11,856.7	165.3	-14.8	0.918	Level 1, ES, SF
Young 01N-65W-28-4N - Wellbore #1 - Plan #1 (8-29-14)	1,000.0	1,000.0	16.8	12.5	3.935	CC
Young 01N-65W-28-4N - Wellbore #1 - Plan #1 (8-29-14)	11,848.6	11,839.8	165.3	-14.5	0.919	Level 1, ES, SF
Young 01N-65W-28-5C - Wellbore #1 - Plan #1 (9-2-14)	1,000.0	1,001.0	30.8	26.5	7.210	CC, ES
Young 01N-65W-28-5C - Wellbore #1 - Plan #1 (9-2-14)	11,848.6	12,039.5	392.1	235.0	2.496	SF
Young 01N-65W-28-6N - Wellbore #1 - Plan #1 (9-2-14)	1,000.0	1,001.0	47.6	43.3	11.142	CC, ES
Young 01N-65W-28-6N - Wellbore #1 - Plan #1 (9-2-14)	11,848.6	11,832.5	495.8	315.7	2.753	SF
Young 01N-65W-28-7N - Wellbore #1 - Plan #1 (9-2-14)	1,000.0	1,002.0	61.6	57.3	14.412	CC, ES
Young 01N-65W-28-7N - Wellbore #1 - Plan #1 (9-2-14)	11,848.6	11,836.2	661.1	481.4	3.680	SF
Young 01N-65W-28-8N - Wellbore #1 - Plan #1 (9-2-14)	1,000.0	1,002.0	75.6	71.3	17.687	CC, ES
Young 01N-65W-28-8N - Wellbore #1 - Plan #1 (9-2-14)	11,848.6	11,849.6	826.3	646.7	4.600	SF
Young 01N-65W-28-9C - Wellbore #1 - Plan #1 (9-2-14)	965.6	968.6	92.4	88.3	22.415	CC
Young 01N-65W-28-9C - Wellbore #1 - Plan #1 (9-2-14)	1,000.0	1,002.9	92.4	88.1	21.608	ES
Young 01N-65W-28-9C - Wellbore #1 - Plan #1 (9-2-14)	1,100.0	1,100.0	95.7	91.0	20.346	SF

Offset Design Existing Wells Sec.28-T1N-R65W - Glen Young 1 (P&A) - Wellbore #1 - Wellbore #1													Offset Site Error:	0.0ft
Survey Program: 8100-UNKNOWN													Offset Well Error:	0.0ft
Reference	Vertical		Offset		Semi Major Axis			Distance						Warning
Measured Depth (ft)	Vertical Depth (ft)	Measured Depth (ft)	Vertical Depth (ft)	Reference (ft)	Offset (ft)	Highside Toolface (°)	Offset Wellbore Centre +N/-S (ft)	+E/-W (ft)	Between Centres (ft)	Between Ellipses (ft)	Minimum Separation (ft)	Separation Factor		
7,500.0	7,256.8	7,232.8	7,232.8	17.8	144.7	-70.67	-1,129.3	22.4	965.6	813.2	152.43	6.335		
7,600.0	7,264.0	7,240.0	7,240.0	18.4	144.8	-90.50	-1,129.3	22.4	876.7	714.6	162.17	5.406		
7,700.0	7,263.5	7,239.5	7,239.5	19.2	144.8	-90.44	-1,129.3	22.4	790.0	627.0	163.03	4.846		
7,800.0	7,263.1	7,239.1	7,239.1	20.1	144.8	-90.37	-1,129.3	22.4	706.9	542.8	164.05	4.309		
7,900.0	7,262.6	7,238.6	7,238.6	21.2	144.8	-90.31	-1,129.3	22.4	628.6	463.4	165.20	3.805		
8,000.0	7,262.1	7,238.1	7,238.1	22.5	144.8	-90.24	-1,129.3	22.4	557.3	390.9	166.45	3.348		

CC - Min centre to center distance or covergent point, SF - min separation factor, ES - min ellipse separation

<b>Company:</b>	Verdad Oil & Gas Corporation	<b>Local Co-ordinate Reference:</b>	Well Young 01N-65W-28-3N
<b>Project:</b>	SEC.28-T1N-R65W	<b>TVD Reference:</b>	WELL @ 5084.0ft (Original Well Elev)
<b>Reference Site:</b>	Young 01N-65W-28 Pad Sec.28-T1N-R65W	<b>MD Reference:</b>	WELL @ 5084.0ft (Original Well Elev)
<b>Site Error:</b>	0.0ft	<b>North Reference:</b>	True
<b>Reference Well:</b>	Young 01N-65W-28-3N	<b>Survey Calculation Method:</b>	Minimum Curvature
<b>Well Error:</b>	0.0ft	<b>Output errors are at</b>	2.00 sigma
<b>Reference Wellbore</b>	Wellbore #1	<b>Database:</b>	Landmark
<b>Reference Design:</b>	Plan #1 (8-29-14)	<b>Offset TVD Reference:</b>	Offset Datum

Offset Design													Offset Site Error:	0.0 ft		
Survey Program: 8100-UNKNOWN													Existing Wells Sec.28-T1N-R65W - Glen Young 1 (P&A) - Wellbore #1 - Wellbore #1		Offset Well Error:	0.0 ft
Reference		Offset		Semi Major Axis			Distance						Warning			
Measured Depth (ft)	Vertical Depth (ft)	Measured Depth (ft)	Vertical Depth (ft)	Reference (ft)	Offset (ft)	Highside Toolface (°)	Offset Wellbore Centre +N/-S (ft)	+E/-W (ft)	Between Centres (ft)	Between Ellipses (ft)	Minimum Separation (ft)	Separation Factor				
8,100.0	7,261.7	7,237.7	7,237.7	23.8	144.8	-90.18	-1,129.3	22.4	496.1	328.3	167.80	2.957				
8,200.0	7,261.2	7,237.2	7,237.2	25.2	144.7	-90.11	-1,129.3	22.4	449.0	279.8	169.22	2.654				
8,300.0	7,260.7	7,236.7	7,236.7	26.6	144.7	-90.05	-1,129.3	22.4	420.8	250.1	170.70	2.465				
8,372.6	7,260.4	7,236.4	7,236.4	27.7	144.7	-90.00	-1,129.3	22.4	414.5	242.7	171.81	2.413	CC, ES			
8,400.0	7,260.2	7,236.2	7,236.2	28.1	144.7	-89.98	-1,129.3	22.4	415.4	243.2	172.23	2.412	SF			
8,500.0	7,259.8	7,235.8	7,235.8	29.7	144.7	-89.92	-1,129.3	22.4	433.7	259.9	173.81	2.495				
8,600.0	7,259.3	7,235.3	7,235.3	31.3	144.7	-89.85	-1,129.3	22.4	472.8	297.4	175.42	2.695				
8,700.0	7,258.8	7,234.8	7,234.8	32.9	144.7	-89.79	-1,129.3	22.4	528.3	351.2	177.07	2.983				
8,800.0	7,258.4	7,234.4	7,234.4	34.6	144.7	-89.72	-1,129.3	22.4	595.4	416.7	178.74	3.331				
8,900.0	7,257.9	7,233.9	7,233.9	36.3	144.7	-89.66	-1,129.3	22.4	670.8	490.4	180.44	3.718				
9,000.0	7,257.4	7,233.4	7,233.4	38.0	144.7	-89.59	-1,129.3	22.4	752.0	569.9	182.15	4.128				
9,100.0	7,256.9	7,232.9	7,232.9	39.7	144.7	-89.53	-1,129.3	22.4	837.3	653.4	183.89	4.553				
9,200.0	7,256.5	7,232.5	7,232.5	41.4	144.6	-89.46	-1,129.3	22.4	925.5	739.8	185.63	4.985				

<b>Company:</b>	Verdad Oil & Gas Corporation	<b>Local Co-ordinate Reference:</b>	Well Young 01N-65W-28-3N
<b>Project:</b>	SEC.28-T1N-R65W	<b>TVD Reference:</b>	WELL @ 5084.0ft (Original Well Elev)
<b>Reference Site:</b>	Young 01N-65W-28 Pad Sec.28-T1N-R65W	<b>MD Reference:</b>	WELL @ 5084.0ft (Original Well Elev)
<b>Site Error:</b>	0.0ft	<b>North Reference:</b>	True
<b>Reference Well:</b>	Young 01N-65W-28-3N	<b>Survey Calculation Method:</b>	Minimum Curvature
<b>Well Error:</b>	0.0ft	<b>Output errors are at</b>	2.00 sigma
<b>Reference Wellbore</b>	Wellbore #1	<b>Database:</b>	Landmark
<b>Reference Design:</b>	Plan #1 (8-29-14)	<b>Offset TVD Reference:</b>	Offset Datum

Offset Design													Offset Site Error:	0.0 ft
Existing Wells Sec.28-T1N-R65W - Neckien 1 (SI) - Wellbore #1 - Wellbore #1													Offset Well Error:	0.0 ft
Survey Program: 8061-UNKNOWN														
Reference		Offset		Semi Major Axis			Distance						Warning	
Measured Depth (ft)	Vertical Depth (ft)	Measured Depth (ft)	Vertical Depth (ft)	Reference (ft)	Offset (ft)	Highside Toolface (°)	Offset Wellbore Centre +N/-S (ft)	+E/-W (ft)	Between Centres (ft)	Between Ellipses (ft)	Minimum Separation (ft)	Separation Factor		
10,400.0	7,250.8	7,220.8	7,220.8	63.1	144.4	-91.05	-4,047.2	-162.5	919.7	712.4	207.25	4.438		
10,500.0	7,250.4	7,220.4	7,220.4	65.0	144.4	-90.93	-4,047.2	-162.5	823.2	614.1	209.10	3.937		
10,600.0	7,249.9	7,219.9	7,219.9	66.8	144.4	-90.81	-4,047.2	-162.5	727.7	516.8	210.95	3.450		
10,700.0	7,249.4	7,219.4	7,219.4	68.7	144.4	-90.69	-4,047.2	-162.5	633.6	420.8	212.81	2.977		
10,800.0	7,248.9	7,218.9	7,218.9	70.5	144.4	-90.58	-4,047.2	-162.5	541.6	327.0	214.67	2.523		
10,900.0	7,248.5	7,218.5	7,218.5	72.4	144.4	-90.46	-4,047.2	-162.5	453.1	236.5	216.52	2.092		
11,000.0	7,248.0	7,218.0	7,218.0	74.3	144.4	-90.34	-4,047.2	-162.5	370.4	152.0	218.39	1.696		
11,100.0	7,247.5	7,217.5	7,217.5	76.1	144.4	-90.22	-4,047.2	-162.5	298.4	78.2	220.25	1.355	Level 3	
11,200.0	7,247.1	7,217.1	7,217.1	78.0	144.3	-90.11	-4,047.2	-162.5	246.9	24.8	222.11	1.112	Level 2	
11,290.5	7,246.6	7,216.6	7,216.6	79.7	144.3	-90.00	-4,047.2	-162.5	229.7	5.9	223.80	1.026	Level 2, CC, ES, SF	
11,300.0	7,246.6	7,216.6	7,216.6	79.9	144.3	-89.99	-4,047.2	-162.5	229.9	5.9	223.98	1.026	Level 2	
11,400.0	7,246.1	7,216.1	7,216.1	81.7	144.3	-89.87	-4,047.2	-162.5	254.4	28.6	225.84	1.127	Level 2	
11,500.0	7,245.6	7,215.6	7,215.6	83.6	144.3	-89.75	-4,047.2	-162.5	310.8	83.1	227.71	1.365	Level 3	
11,600.0	7,245.2	7,215.2	7,215.2	85.5	144.3	-89.64	-4,047.2	-162.5	385.4	155.8	229.58	1.679		
11,700.0	7,244.7	7,214.7	7,214.7	87.4	144.3	-89.52	-4,047.2	-162.5	469.5	238.0	231.44	2.028		
11,800.0	7,244.2	7,214.2	7,214.2	89.3	144.3	-89.40	-4,047.2	-162.5	558.8	325.5	233.31	2.395		
11,848.6	7,244.0	7,214.0	7,214.0	90.2	144.3	-89.34	-4,047.2	-162.5	603.5	369.3	234.22	2.577		

<b>Company:</b>	Verdad Oil & Gas Corporation	<b>Local Co-ordinate Reference:</b>	Well Young 01N-65W-28-3N
<b>Project:</b>	SEC.28-T1N-R65W	<b>TVD Reference:</b>	WELL @ 5084.0ft (Original Well Elev)
<b>Reference Site:</b>	Young 01N-65W-28 Pad Sec.28-T1N-R65W	<b>MD Reference:</b>	WELL @ 5084.0ft (Original Well Elev)
<b>Site Error:</b>	0.0ft	<b>North Reference:</b>	True
<b>Reference Well:</b>	Young 01N-65W-28-3N	<b>Survey Calculation Method:</b>	Minimum Curvature
<b>Well Error:</b>	0.0ft	<b>Output errors are at</b>	2.00 sigma
<b>Reference Wellbore</b>	Wellbore #1	<b>Database:</b>	Landmark
<b>Reference Design:</b>	Plan #1 (8-29-14)	<b>Offset TVD Reference:</b>	Offset Datum

Offset Design													Offset Site Error:	0.0 ft	
Survey Program: 0-MWD													Offset Well Error:		0.0 ft
Reference		Offset		Semi Major Axis			Distance						Warning		
Measured Depth (ft)	Vertical Depth (ft)	Measured Depth (ft)	Vertical Depth (ft)	Reference (ft)	Offset (ft)	Highside Toolface (°)	Offset Wellbore Centre +N/-S (ft)	+E/-W (ft)	Between Centres (ft)	Between Ellipses (ft)	Minimum Separation (ft)	Separation Factor			
0.0	0.0	0.0	0.0	0.0	0.0	-89.98	0.0	-28.0	28.0						
100.0	100.0	99.0	99.0	0.1	0.1	-89.98	0.0	-28.0	28.0	27.8	0.22	125.219			
200.0	200.0	199.0	199.0	0.3	0.3	-89.98	0.0	-28.0	28.0	27.3	0.67	41.670	CC, ES		
300.0	300.0	298.0	298.0	0.6	0.6	-89.18	0.4	-29.6	29.6	28.5	1.11	26.638			
400.0	400.0	396.8	396.7	0.8	0.8	-87.22	1.7	-34.6	34.7	33.1	1.56	22.195			
500.0	500.0	495.1	494.6	1.0	1.0	-84.97	3.8	-42.7	43.1	41.1	2.03	21.226			
600.0	600.0	592.8	591.5	1.2	1.3	-82.99	6.6	-54.1	55.0	52.4	2.53	21.755			
700.0	700.0	691.0	688.7	1.5	1.6	-81.47	10.2	-68.0	69.5	66.5	3.05	22.771			
800.0	800.0	789.9	786.5	1.7	2.0	-80.46	13.8	-82.2	84.3	80.7	3.59	23.466			
900.0	900.0	888.8	884.3	1.9	2.3	-79.75	17.4	-96.5	99.1	95.0	4.14	23.938			
1,000.0	1,000.0	987.7	982.1	2.1	2.6	-79.22	21.1	-110.7	114.0	109.3	4.69	24.274			
1,100.0	1,100.0	1,086.8	1,080.1	2.4	3.0	-13.22	24.7	-125.0	127.1	122.3	4.76	26.711			
1,200.0	1,199.8	1,186.3	1,178.5	2.6	3.3	-13.32	28.4	-139.3	136.9	131.7	5.20	26.298			
1,300.0	1,299.5	1,286.1	1,277.2	2.8	3.7	-13.75	32.0	-153.7	143.3	137.6	5.65	25.340			
1,400.0	1,398.7	1,386.0	1,376.0	3.0	4.0	-14.46	35.7	-168.0	146.6	140.5	6.11	23.987			
1,500.0	1,498.0	1,486.0	1,474.9	3.3	4.4	-15.20	39.3	-182.4	149.5	142.9	6.58	22.708			
1,600.0	1,597.2	1,585.9	1,573.7	3.6	4.8	-15.91	43.0	-196.8	152.3	145.3	7.06	21.589			
1,700.0	1,696.4	1,685.9	1,672.5	3.9	5.1	-16.60	46.7	-211.2	155.2	147.7	7.53	20.602			
1,800.0	1,795.7	1,785.8	1,771.4	4.1	5.5	-17.26	50.3	-225.6	158.1	150.1	8.02	19.725			
1,900.0	1,894.9	1,885.7	1,870.2	4.4	5.8	-17.90	54.0	-240.0	161.1	152.5	8.50	18.943			
2,000.0	1,994.1	1,985.7	1,969.0	4.7	6.2	-18.51	57.7	-254.4	164.0	155.0	8.99	18.240			
2,100.0	2,093.3	2,085.6	2,067.9	5.0	6.6	-19.10	61.3	-268.8	167.0	157.5	9.48	17.606			
2,200.0	2,192.6	2,185.6	2,166.7	5.3	6.9	-19.68	65.0	-283.1	170.0	160.0	9.98	17.031			
2,300.0	2,291.8	2,285.5	2,265.5	5.6	7.3	-20.23	68.6	-297.5	173.0	162.5	10.48	16.507			
2,400.0	2,391.0	2,385.4	2,364.4	5.9	7.6	-20.76	72.3	-311.9	176.0	165.0	10.98	16.028			
2,500.0	2,490.3	2,485.4	2,463.2	6.2	8.0	-21.28	76.0	-326.3	179.0	167.5	11.48	15.589			
2,600.0	2,589.5	2,585.3	2,562.0	6.6	8.4	-21.77	79.6	-340.7	182.1	170.1	11.99	15.185			
2,700.0	2,688.7	2,685.3	2,660.9	6.9	8.7	-22.26	83.3	-355.1	185.1	172.6	12.50	14.812			
2,800.0	2,787.9	2,785.2	2,759.7	7.2	9.1	-22.72	87.0	-369.5	188.2	175.2	13.01	14.467			
2,900.0	2,887.2	2,885.2	2,858.5	7.5	9.4	-23.17	90.6	-383.8	191.3	177.7	13.52	14.146			
3,000.0	2,986.4	2,985.1	2,957.4	7.8	9.8	-23.61	94.3	-398.2	194.4	180.3	14.04	13.847			
3,100.0	3,085.6	3,085.0	3,056.2	8.1	10.2	-24.03	98.0	-412.6	197.5	182.9	14.55	13.569			
3,200.0	3,184.9	3,185.0	3,155.0	8.4	10.5	-24.44	101.6	-427.0	200.6	185.5	15.07	13.308			
3,300.0	3,284.1	3,284.9	3,253.9	8.7	10.9	-24.84	105.3	-441.4	203.7	188.1	15.59	13.064			
3,400.0	3,383.3	3,384.9	3,352.7	9.1	11.2	-25.23	108.9	-455.8	206.8	190.7	16.12	12.835			
3,500.0	3,482.5	3,484.8	3,451.5	9.4	11.6	-25.60	112.6	-470.2	210.0	193.4	16.64	12.619			
3,600.0	3,581.8	3,584.7	3,550.4	9.7	12.0	-25.96	116.3	-484.5	213.1	196.0	17.17	12.416			
3,700.0	3,681.0	3,684.7	3,649.2	10.0	12.3	-26.31	119.9	-498.9	216.3	198.6	17.69	12.224			
3,800.0	3,780.2	3,784.6	3,748.0	10.3	12.7	-26.66	123.6	-513.3	219.5	201.3	18.22	12.043			
3,900.0	3,879.5	3,884.6	3,846.8	10.7	13.0	-26.99	127.3	-527.7	222.7	203.9	18.76	11.872			
4,000.0	3,978.7	3,984.5	3,945.7	11.0	13.4	-27.31	130.9	-542.1	225.8	206.6	19.29	11.709			
4,100.0	4,077.9	4,084.5	4,044.5	11.3	13.8	-27.63	134.6	-556.5	229.0	209.2	19.82	11.555			
4,200.0	4,177.1	4,184.4	4,143.3	11.6	14.1	-27.93	138.3	-570.9	232.2	211.9	20.36	11.408			
4,300.0	4,276.4	4,284.3	4,242.2	11.9	14.5	-28.23	141.9	-585.3	235.4	214.5	20.89	11.269			
4,400.0	4,375.6	4,384.3	4,341.0	12.2	14.8	-28.52	145.6	-599.6	238.6	217.2	21.43	11.136			
4,500.0	4,474.9	4,484.2	4,439.8	12.6	15.2	-28.79	149.2	-614.0	242.0	220.0	21.96	11.020			
4,600.0	4,574.4	4,584.0	4,538.6	12.8	15.6	-28.80	152.9	-628.4	247.7	225.3	22.41	11.054			
4,700.0	4,674.2	4,683.6	4,637.1	13.0	15.9	-28.47	156.6	-642.7	256.4	233.6	22.79	11.248			
4,800.0	4,774.2	4,782.9	4,735.2	13.1	16.3	-27.84	160.2	-657.0	268.2	245.1	23.12	11.599			
4,900.0	4,874.2	4,881.8	4,833.0	13.3	16.6	-92.68	163.8	-671.3	282.3	258.8	23.47	12.029			
5,000.0	4,974.2	4,980.7	4,930.8	13.5	17.0	-91.85	167.4	-685.5	296.5	272.7	23.85	12.434			
5,100.0	5,074.2	5,086.0	5,035.0	13.6	17.3	-91.07	171.1	-700.0	310.3	286.1	24.24	12.802			

CC - Min centre to center distance or convergent point, SF - min separation factor, ES - min ellipse separation

<b>Company:</b>	Verdad Oil & Gas Corporation	<b>Local Co-ordinate Reference:</b>	Well Young 01N-65W-28-3N
<b>Project:</b>	SEC.28-T1N-R65W	<b>TVD Reference:</b>	WELL @ 5084.0ft (Original Well Elev)
<b>Reference Site:</b>	Young 01N-65W-28 Pad Sec.28-T1N-R65W	<b>MD Reference:</b>	WELL @ 5084.0ft (Original Well Elev)
<b>Site Error:</b>	0.0ft	<b>North Reference:</b>	True
<b>Reference Well:</b>	Young 01N-65W-28-3N	<b>Survey Calculation Method:</b>	Minimum Curvature
<b>Well Error:</b>	0.0ft	<b>Output errors are at</b>	2.00 sigma
<b>Reference Wellbore</b>	Wellbore #1	<b>Database:</b>	Landmark
<b>Reference Design:</b>	Plan #1 (8-29-14)	<b>Offset TVD Reference:</b>	Offset Datum

Offset Design													Offset Site Error:	0.0 ft	
Survey Program: 0-MWD													Offset Well Error:		0.0 ft
Reference		Offset		Semi Major Axis			Distance						Warning		
Measured Depth (ft)	Vertical Depth (ft)	Measured Depth (ft)	Vertical Depth (ft)	Reference (ft)	Offset (ft)	Highside Toolface (°)	Offset Wellbore Centre +N/-S (ft)	+E/-W (ft)	Between Centres (ft)	Between Ellipses (ft)	Minimum Separation (ft)	Separation Factor			
5,200.0	5,174.2	5,197.2	5,145.6	13.8	17.6	-90.50	174.1	-711.7	320.7	296.1	24.61	13.032			
5,300.0	5,274.2	5,309.3	5,257.4	14.0	17.8	-90.15	176.0	-719.2	327.4	302.5	24.99	13.104			
5,400.0	5,374.2	5,421.7	5,369.8	14.2	18.0	-90.01	176.9	-722.5	330.4	305.0	25.37	13.022			
5,500.0	5,474.2	5,525.1	5,473.2	14.4	18.1	-90.00	176.9	-722.6	330.5	304.8	25.75	12.833			
5,600.0	5,574.2	5,625.1	5,573.2	14.5	18.2	-90.00	176.9	-722.6	330.5	304.4	26.14	12.642			
5,700.0	5,674.2	5,725.1	5,673.2	14.7	18.4	-90.00	176.9	-722.6	330.5	304.0	26.54	12.455			
5,800.0	5,774.2	5,825.1	5,773.2	14.9	18.5	-90.00	176.9	-722.6	330.5	303.6	26.93	12.274			
5,900.0	5,874.2	5,925.1	5,873.2	15.1	18.7	-90.00	176.9	-722.6	330.5	303.2	27.32	12.096			
6,000.0	5,974.2	6,025.1	5,973.2	15.3	18.8	-90.00	176.9	-722.6	330.5	302.8	27.72	11.923			
6,100.0	6,074.2	6,125.1	6,073.2	15.5	19.0	-90.00	176.9	-722.6	330.5	302.4	28.12	11.755			
6,200.0	6,174.2	6,225.1	6,173.2	15.7	19.1	-90.00	176.9	-722.6	330.5	302.0	28.52	11.590			
6,300.0	6,274.2	6,325.1	6,273.2	15.9	19.3	-90.00	176.9	-722.6	330.5	301.6	28.92	11.429			
6,400.0	6,374.2	6,425.1	6,373.2	16.0	19.4	-90.00	176.9	-722.6	330.5	301.2	29.32	11.273			
6,500.0	6,474.2	6,525.1	6,473.2	16.2	19.6	-90.00	176.9	-722.6	330.5	300.8	29.72	11.119			
6,600.0	6,574.2	6,625.1	6,573.2	16.4	19.7	-90.00	176.9	-722.6	330.5	300.4	30.13	10.970			
6,700.0	6,674.2	6,725.1	6,673.2	16.6	19.9	-90.00	176.9	-722.6	330.5	300.0	30.53	10.824			
6,754.9	6,729.1	6,780.0	6,728.1	16.7	20.0	90.16	176.9	-722.6	330.5	299.8	30.74	10.751			
6,800.0	6,774.1	6,825.1	6,773.1	16.8	20.1	90.16	176.9	-722.6	330.5	299.6	30.92	10.688			
6,900.0	6,872.8	6,923.7	6,871.8	16.9	20.2	92.75	176.9	-722.6	330.9	299.8	31.08	10.648			
7,000.0	6,966.7	7,019.5	6,967.5	17.0	20.4	97.92	176.5	-722.6	334.3	303.2	31.04	10.771			
7,100.0	7,052.3	7,125.8	7,072.7	17.1	20.5	103.98	161.8	-722.6	342.3	311.5	30.86	11.094			
7,200.0	7,126.6	7,243.1	7,182.4	17.1	20.6	109.65	121.2	-722.6	353.8	323.3	30.50	11.598			
7,300.0	7,186.9	7,373.4	7,290.3	17.2	20.6	114.65	48.7	-722.6	366.7	336.7	29.96	12.239			
7,400.0	7,230.8	7,517.8	7,384.7	17.4	20.8	118.63	-60.0	-722.6	378.6	349.2	29.41	12.876			
7,500.0	7,256.8	7,674.9	7,449.3	17.8	21.0	121.17	-202.6	-722.6	386.9	357.6	29.26	13.224			
7,600.0	7,264.0	7,831.6	7,468.8	18.4	21.6	121.91	-357.5	-722.6	389.4	359.4	29.93	13.007			
7,700.0	7,263.5	7,931.6	7,468.5	19.2	22.2	121.93	-457.5	-722.6	389.4	358.1	31.35	12.422			
7,800.0	7,263.1	8,031.6	7,468.1	20.1	23.0	121.94	-557.5	-722.6	389.5	356.4	33.03	11.791			
7,900.0	7,262.6	8,131.6	7,467.8	21.2	23.9	121.96	-657.5	-722.6	389.5	354.6	34.95	11.145			
8,000.0	7,262.1	8,231.6	7,467.4	22.5	25.0	121.97	-757.5	-722.6	389.6	352.5	37.08	10.508			
8,100.0	7,261.7	8,331.6	7,467.1	23.8	26.2	121.99	-857.5	-722.6	389.7	350.3	39.37	9.899			
8,200.0	7,261.2	8,431.6	7,466.7	25.2	27.4	122.00	-957.5	-722.6	389.7	347.9	41.80	9.324			
8,300.0	7,260.7	8,531.6	7,466.4	26.6	28.7	122.02	-1,057.5	-722.6	389.8	345.5	44.35	8.790			
8,400.0	7,260.2	8,631.6	7,466.0	28.1	30.1	122.03	-1,157.5	-722.6	389.9	342.9	46.99	8.296			
8,500.0	7,259.8	8,731.6	7,465.7	29.7	31.6	122.05	-1,257.5	-722.6	389.9	340.2	49.72	7.842			
8,600.0	7,259.3	8,831.6	7,465.3	31.3	33.1	122.06	-1,357.5	-722.6	390.0	337.5	52.52	7.425			
8,700.0	7,258.8	8,931.6	7,465.0	32.9	34.6	122.08	-1,457.4	-722.6	390.1	334.7	55.38	7.043			
8,800.0	7,258.4	9,031.6	7,464.6	34.6	36.2	122.09	-1,557.4	-722.6	390.1	331.8	58.29	6.693			
8,900.0	7,257.9	9,131.6	7,464.3	36.3	37.8	122.11	-1,657.4	-722.6	390.2	329.0	61.24	6.372			
9,000.0	7,257.4	9,231.6	7,463.9	38.0	39.5	122.12	-1,757.4	-722.6	390.3	326.0	64.22	6.077			
9,100.0	7,256.9	9,331.6	7,463.6	39.7	41.1	122.14	-1,857.4	-722.6	390.3	323.1	67.24	5.805			
9,200.0	7,256.5	9,431.6	7,463.2	41.4	42.8	122.15	-1,957.4	-722.6	390.4	320.1	70.28	5.554			
9,300.0	7,256.0	9,531.6	7,462.9	43.2	44.5	122.17	-2,057.4	-722.6	390.5	317.1	73.35	5.323			
9,400.0	7,255.5	9,631.6	7,462.5	45.0	46.3	122.18	-2,157.4	-722.6	390.5	314.1	76.44	5.109			
9,500.0	7,255.1	9,731.6	7,462.2	46.7	48.0	122.20	-2,257.4	-722.6	390.6	311.0	79.55	4.910			
9,600.0	7,254.6	9,831.6	7,461.8	48.5	49.7	122.21	-2,357.4	-722.6	390.6	308.0	82.67	4.725			
9,700.0	7,254.1	9,931.6	7,461.5	50.3	51.5	122.23	-2,457.4	-722.6	390.7	304.9	85.81	4.553			
9,800.0	7,253.7	10,031.6	7,461.1	52.1	53.3	122.25	-2,557.4	-722.6	390.8	301.8	88.96	4.393			
9,900.0	7,253.2	10,131.6	7,460.8	54.0	55.1	122.26	-2,657.4	-722.6	390.8	298.7	92.13	4.243			
10,000.0	7,252.7	10,231.6	7,460.4	55.8	56.8	122.28	-2,757.4	-722.6	390.9	295.6	95.30	4.102			
10,100.0	7,252.2	10,331.6	7,460.1	57.6	58.6	122.29	-2,857.4	-722.6	391.0	292.5	98.48	3.970			
10,200.0	7,251.8	10,431.6	7,459.7	59.4	60.4	122.31	-2,957.4	-722.6	391.0	289.4	101.67	3.846			

CC - Min centre to center distance or convergent point, SF - min separation factor, ES - min ellipse separation

<b>Company:</b>	Verdad Oil & Gas Corporation	<b>Local Co-ordinate Reference:</b>	Well Young 01N-65W-28-3N
<b>Project:</b>	SEC.28-T1N-R65W	<b>TVD Reference:</b>	WELL @ 5084.0ft (Original Well Elev)
<b>Reference Site:</b>	Young 01N-65W-28 Pad Sec.28-T1N-R65W	<b>MD Reference:</b>	WELL @ 5084.0ft (Original Well Elev)
<b>Site Error:</b>	0.0ft	<b>North Reference:</b>	True
<b>Reference Well:</b>	Young 01N-65W-28-3N	<b>Survey Calculation Method:</b>	Minimum Curvature
<b>Well Error:</b>	0.0ft	<b>Output errors are at</b>	2.00 sigma
<b>Reference Wellbore</b>	Wellbore #1	<b>Database:</b>	Landmark
<b>Reference Design:</b>	Plan #1 (8-29-14)	<b>Offset TVD Reference:</b>	Offset Datum

Offset Design													Offset Site Error:	0.0 ft	
Survey Program: 0-MWD													Offset Well Error:		0.0 ft
Reference		Offset		Semi Major Axis			Distance						Warning		
Measured Depth (ft)	Vertical Depth (ft)	Measured Depth (ft)	Vertical Depth (ft)	Reference (ft)	Offset (ft)	Highside Toolface (°)	Offset Wellbore Centre +N/-S (ft)	+E/-W (ft)	Between Centres (ft)	Between Ellipses (ft)	Minimum Separation (ft)	Separation Factor			
10,300.0	7,251.3	10,531.6	7,459.4	61.3	62.3	122.32	-3,057.4	-722.6	391.1	286.2	104.86	3.730			
10,400.0	7,250.8	10,631.6	7,459.1	63.1	64.1	122.34	-3,157.4	-722.6	391.2	283.1	108.07	3.620			
10,500.0	7,250.4	10,731.6	7,458.7	65.0	65.9	122.35	-3,257.4	-722.6	391.2	280.0	111.28	3.516			
10,600.0	7,249.9	10,831.6	7,458.4	66.8	67.7	122.37	-3,357.4	-722.6	391.3	276.8	114.49	3.418			
10,700.0	7,249.4	10,931.6	7,458.0	68.7	69.6	122.38	-3,457.4	-722.6	391.4	273.7	117.71	3.325			
10,800.0	7,248.9	11,031.6	7,457.7	70.5	71.4	122.40	-3,557.4	-722.6	391.4	270.5	120.93	3.237			
10,900.0	7,248.5	11,131.6	7,457.3	72.4	73.2	122.41	-3,657.4	-722.6	391.5	267.3	124.16	3.153			
11,000.0	7,248.0	11,231.6	7,457.0	74.3	75.1	122.43	-3,757.4	-722.6	391.6	264.2	127.39	3.074			
11,100.0	7,247.5	11,331.6	7,456.6	76.1	76.9	122.44	-3,857.4	-722.6	391.6	261.0	130.62	2.998			
11,200.0	7,247.1	11,431.6	7,456.3	78.0	78.8	122.46	-3,957.4	-722.6	391.7	257.8	133.86	2.926			
11,300.0	7,246.6	11,531.6	7,455.9	79.9	80.6	122.47	-4,057.4	-722.6	391.8	254.7	137.10	2.858			
11,400.0	7,246.1	11,631.6	7,455.6	81.7	82.5	122.49	-4,157.4	-722.6	391.8	251.5	140.34	2.792			
11,500.0	7,245.6	11,731.6	7,455.2	83.6	84.4	122.50	-4,257.4	-722.6	391.9	248.3	143.58	2.729			
11,600.0	7,245.2	11,831.6	7,454.9	85.5	86.2	122.52	-4,357.4	-722.6	392.0	245.1	146.83	2.669			
11,700.0	7,244.7	11,931.6	7,454.5	87.4	88.1	122.53	-4,457.4	-722.6	392.0	241.9	150.08	2.612			
11,800.0	7,244.2	12,031.6	7,454.2	89.3	90.0	122.55	-4,557.4	-722.6	392.1	238.8	153.33	2.557			
11,821.1	7,244.1	12,052.7	7,454.1	89.7	90.3	122.55	-4,578.5	-722.6	392.1	238.1	154.01	2.546			
11,848.6	7,244.0	12,078.8	7,454.0	90.2	90.8	122.55	-4,604.6	-722.6	392.1	237.2	154.88	2.532 SF			

<b>Company:</b>	Verdad Oil & Gas Corporation	<b>Local Co-ordinate Reference:</b>	Well Young 01N-65W-28-3N
<b>Project:</b>	SEC.28-T1N-R65W	<b>TVD Reference:</b>	WELL @ 5084.0ft (Original Well Elev)
<b>Reference Site:</b>	Young 01N-65W-28 Pad Sec.28-T1N-R65W	<b>MD Reference:</b>	WELL @ 5084.0ft (Original Well Elev)
<b>Site Error:</b>	0.0ft	<b>North Reference:</b>	True
<b>Reference Well:</b>	Young 01N-65W-28-3N	<b>Survey Calculation Method:</b>	Minimum Curvature
<b>Well Error:</b>	0.0ft	<b>Output errors are at</b>	2.00 sigma
<b>Reference Wellbore</b>	Wellbore #1	<b>Database:</b>	Landmark
<b>Reference Design:</b>	Plan #1 (8-29-14)	<b>Offset TVD Reference:</b>	Offset Datum

Offset Design													Offset Site Error:	0.0ft	
Survey Program: 0-MWD													Offset Well Error:		0.0ft
Reference		Offset		Semi Major Axis			Distance						Warning		
Measured Depth (ft)	Vertical Depth (ft)	Measured Depth (ft)	Vertical Depth (ft)	Reference (ft)	Offset (ft)	Highside Toolface (°)	Offset Wellbore Centre +N/-S (ft)	+E/-W (ft)	Between Centres (ft)	Between Ellipses (ft)	Minimum Separation (ft)	Separation Factor			
0.0	0.0	0.0	0.0	0.0	0.0	-89.95	0.0	-14.0	14.0	14.0	0.00	N/A			
100.0	100.0	99.0	99.0	0.1	0.1	-89.95	0.0	-14.0	14.0	13.8	0.22	62.610			
200.0	200.0	199.0	199.0	0.3	0.3	-89.95	0.0	-14.0	14.0	13.3	0.67	20.835			
300.0	300.0	299.0	299.0	0.6	0.6	-89.95	0.0	-14.0	14.0	12.9	1.12	12.484			
400.0	400.0	399.0	399.0	0.8	0.8	-89.95	0.0	-14.0	14.0	12.4	1.57	8.912 CC			
500.0	500.0	498.5	498.5	1.0	1.0	-88.03	0.5	-15.6	15.6	13.6	2.01	7.767			
600.0	600.0	597.8	597.6	1.2	1.2	-84.08	2.1	-20.5	20.6	18.2	2.46	8.407			
700.0	700.0	696.6	696.0	1.5	1.5	-80.55	4.8	-28.6	29.1	26.2	2.92	9.990			
800.0	800.0	795.0	793.8	1.7	1.7	-78.08	8.4	-39.7	40.9	37.5	3.40	12.042			
900.0	900.0	894.2	892.2	1.9	2.0	-76.62	12.3	-51.8	53.7	49.8	3.90	13.761			
1,000.0	1,000.0	993.4	990.5	2.1	2.3	-75.73	16.2	-63.9	66.4	62.0	4.41	15.057			
1,100.0	1,100.0	1,092.8	1,089.1	2.4	2.6	-9.58	20.2	-75.9	77.5	72.8	4.70	16.503			
1,200.0	1,199.8	1,192.5	1,188.0	2.6	2.9	-9.64	24.1	-88.1	85.1	80.0	5.13	16.587			
1,300.0	1,299.5	1,292.4	1,287.1	2.8	3.2	-10.07	28.1	-100.2	89.3	83.7	5.57	16.033			
1,400.0	1,398.7	1,392.4	1,386.2	3.0	3.6	-10.84	32.0	-112.4	90.4	84.4	6.02	15.024			
1,500.0	1,498.0	1,492.3	1,485.4	3.3	3.9	-11.66	36.0	-124.5	91.0	84.5	6.48	14.048			
1,600.0	1,597.2	1,592.3	1,584.6	3.6	4.2	-12.48	40.0	-136.7	91.6	84.7	6.94	13.195			
1,700.0	1,696.4	1,692.3	1,683.7	3.9	4.5	-13.28	43.9	-148.8	92.2	84.8	7.41	12.444			
1,800.0	1,795.7	1,792.3	1,782.9	4.1	4.8	-14.07	47.9	-161.0	92.9	85.0	7.88	11.779			
1,900.0	1,894.9	1,892.3	1,882.1	4.4	5.2	-14.85	51.8	-173.2	93.5	85.2	8.36	11.187			
2,000.0	1,994.1	1,992.3	1,981.2	4.7	5.5	-15.62	55.8	-185.3	94.2	85.4	8.84	10.656			
2,100.0	2,093.3	2,092.3	2,080.4	5.0	5.8	-16.37	59.7	-197.5	94.9	85.6	9.32	10.177			
2,200.0	2,192.6	2,192.3	2,179.6	5.3	6.1	-17.12	63.7	-209.6	95.6	85.8	9.81	9.745			
2,300.0	2,291.8	2,292.3	2,278.7	5.6	6.5	-17.86	67.7	-221.8	96.3	86.0	10.30	9.351			
2,400.0	2,391.0	2,392.3	2,377.9	5.9	6.8	-18.58	71.6	-233.9	97.1	86.3	10.79	8.992			
2,500.0	2,490.3	2,492.2	2,477.1	6.2	7.1	-19.29	75.6	-246.1	97.8	86.5	11.29	8.664			
2,600.0	2,589.5	2,592.2	2,576.2	6.6	7.5	-20.00	79.5	-258.3	98.6	86.8	11.79	8.361			
2,700.0	2,688.7	2,692.2	2,675.4	6.9	7.8	-20.69	83.5	-270.4	99.4	87.1	12.29	8.083			
2,800.0	2,787.9	2,792.2	2,774.6	7.2	8.1	-21.37	87.4	-282.6	100.2	87.4	12.80	7.825			
2,900.0	2,887.2	2,892.2	2,873.8	7.5	8.4	-22.04	91.4	-294.7	101.0	87.7	13.31	7.587			
3,000.0	2,986.4	2,992.2	2,972.9	7.8	8.8	-22.70	95.4	-306.9	101.8	88.0	13.82	7.365			
3,100.0	3,085.6	3,092.2	3,072.1	8.1	9.1	-23.34	99.3	-319.1	102.6	88.3	14.34	7.158			
3,200.0	3,184.9	3,192.2	3,171.3	8.4	9.4	-23.98	103.3	-331.2	103.5	88.6	14.86	6.966			
3,300.0	3,284.1	3,292.2	3,270.4	8.7	9.8	-24.61	107.2	-343.4	104.3	89.0	15.38	6.785			
3,400.0	3,383.3	3,392.2	3,369.6	9.1	10.1	-25.22	111.2	-355.5	105.2	89.3	15.90	6.616			
3,500.0	3,482.5	3,492.1	3,468.8	9.4	10.4	-25.83	115.2	-367.7	106.1	89.7	16.43	6.458			
3,600.0	3,581.8	3,592.1	3,567.9	9.7	10.7	-26.43	119.1	-379.8	107.0	90.0	16.96	6.308			
3,700.0	3,681.0	3,692.1	3,667.1	10.0	11.1	-27.01	123.1	-392.0	107.9	90.4	17.50	6.168			
3,800.0	3,780.2	3,792.1	3,766.3	10.3	11.4	-27.59	127.0	-404.2	108.8	90.8	18.03	6.035			
3,900.0	3,879.5	3,892.1	3,865.4	10.7	11.7	-28.16	131.0	-416.3	109.8	91.2	18.57	5.910			
4,000.0	3,978.7	3,992.1	3,964.6	11.0	12.1	-28.71	134.9	-428.5	110.7	91.6	19.12	5.791			
4,100.0	4,077.9	4,092.1	4,063.8	11.3	12.4	-29.26	138.9	-440.6	111.7	92.0	19.66	5.679			
4,200.0	4,177.1	4,192.1	4,163.0	11.6	12.7	-29.80	142.9	-452.8	112.6	92.4	20.21	5.573			
4,300.0	4,276.4	4,292.1	4,262.1	11.9	13.0	-30.33	146.8	-465.0	113.6	92.8	20.76	5.472			
4,400.0	4,375.6	4,392.1	4,361.3	12.2	13.4	-30.85	150.8	-477.1	114.6	93.3	21.31	5.376			
4,500.0	4,474.9	4,492.0	4,460.5	12.6	13.7	-31.32	154.7	-489.3	115.7	93.9	21.86	5.293			
4,600.0	4,574.4	4,592.0	4,559.6	12.8	14.0	-31.15	158.7	-501.4	119.1	96.8	22.30	5.340			
4,700.0	4,674.2	4,691.7	4,658.5	13.0	14.4	-30.20	162.6	-513.6	125.5	102.8	22.65	5.541			
4,800.0	4,774.2	4,791.2	4,757.2	13.1	14.7	-28.65	166.6	-525.6	135.0	112.0	22.92	5.890			
4,900.0	4,874.2	4,891.5	4,856.7	13.3	15.0	-92.51	170.5	-537.8	146.7	123.5	23.19	6.326			
5,000.0	4,974.2	4,996.2	4,960.8	13.5	15.2	-91.13	173.8	-547.9	156.3	132.8	23.49	6.652			
5,100.0	5,074.2	5,101.6	5,065.9	13.6	15.4	-90.34	175.9	-554.4	162.4	138.6	23.83	6.817			

CC - Min centre to center distance or convergent point, SF - min separation factor, ES - min ellipse separation

<b>Company:</b>	Verdad Oil & Gas Corporation	<b>Local Co-ordinate Reference:</b>	Well Young 01N-65W-28-3N
<b>Project:</b>	SEC.28-T1N-R65W	<b>TVD Reference:</b>	WELL @ 5084.0ft (Original Well Elev)
<b>Reference Site:</b>	Young 01N-65W-28 Pad Sec.28-T1N-R65W	<b>MD Reference:</b>	WELL @ 5084.0ft (Original Well Elev)
<b>Site Error:</b>	0.0ft	<b>North Reference:</b>	True
<b>Reference Well:</b>	Young 01N-65W-28-3N	<b>Survey Calculation Method:</b>	Minimum Curvature
<b>Well Error:</b>	0.0ft	<b>Output errors are at</b>	2.00 sigma
<b>Reference Wellbore</b>	Wellbore #1	<b>Database:</b>	Landmark
<b>Reference Design:</b>	Plan #1 (8-29-14)	<b>Offset TVD Reference:</b>	Offset Datum

Offset Design													Offset Site Error:	0.0 ft	
Survey Program: 0-MWD													Offset Well Error:		0.0 ft
Reference		Offset		Semi Major Axis			Distance						Warning		
Measured Depth (ft)	Vertical Depth (ft)	Measured Depth (ft)	Vertical Depth (ft)	Reference (ft)	Offset (ft)	Highside Toolface (°)	Offset Wellbore Centre +N/-S (ft)	+E/-W (ft)	Between Centres (ft)	Between Ellipses (ft)	Minimum Separation (ft)	Separation Factor			
5,200.0	5,174.2	5,207.3	5,171.6	13.8	15.6	-90.01	176.9	-557.3	165.1	140.9	24.19	6.828			
5,300.0	5,274.2	5,308.8	5,273.2	14.0	15.7	-90.00	176.9	-557.4	165.3	140.7	24.57	6.726			
5,400.0	5,374.2	5,408.8	5,373.2	14.2	15.9	-90.00	176.9	-557.4	165.3	140.3	24.96	6.620			
5,500.0	5,474.2	5,508.8	5,473.2	14.4	16.1	-90.00	176.9	-557.4	165.3	139.9	25.36	6.516			
5,600.0	5,574.2	5,608.8	5,573.2	14.5	16.2	-90.00	176.9	-557.4	165.3	139.5	25.76	6.416			
5,700.0	5,674.2	5,708.8	5,673.2	14.7	16.4	-90.00	176.9	-557.4	165.3	139.1	26.16	6.318			
5,800.0	5,774.2	5,808.8	5,773.2	14.9	16.6	-90.00	176.9	-557.4	165.3	138.7	26.56	6.222			
5,900.0	5,874.2	5,908.8	5,873.2	15.1	16.7	-90.00	176.9	-557.4	165.3	138.3	26.96	6.129			
6,000.0	5,974.2	6,008.8	5,973.2	15.3	16.9	-90.00	176.9	-557.4	165.3	137.9	27.37	6.038			
6,100.0	6,074.2	6,108.8	6,073.2	15.5	17.1	-90.00	176.9	-557.4	165.3	137.5	27.77	5.950			
6,200.0	6,174.2	6,208.8	6,173.2	15.7	17.2	-90.00	176.9	-557.4	165.3	137.1	28.18	5.864			
6,300.0	6,274.2	6,308.8	6,273.2	15.9	17.4	-90.00	176.9	-557.4	165.3	136.7	28.59	5.781			
6,400.0	6,374.2	6,408.8	6,373.2	16.0	17.6	-90.00	176.9	-557.4	165.3	136.3	29.00	5.699			
6,500.0	6,474.2	6,508.8	6,473.2	16.2	17.7	-90.00	176.9	-557.4	165.3	135.8	29.41	5.619			
6,600.0	6,574.2	6,608.8	6,573.2	16.4	17.9	-90.00	176.9	-557.4	165.3	135.4	29.82	5.542			
6,700.0	6,674.2	6,708.8	6,673.2	16.6	18.1	-90.00	176.9	-557.4	165.3	135.0	30.23	5.466			
6,800.0	6,774.1	6,808.8	6,773.1	16.8	18.3	90.00	176.0	-557.4	165.3	134.6	30.63	5.395			
6,900.0	6,872.8	6,908.8	6,871.8	16.9	18.4	90.00	160.5	-557.4	165.3	134.4	30.87	5.353			
7,000.0	6,966.7	7,008.8	6,965.7	17.0	18.4	90.00	126.5	-557.4	165.3	134.2	31.01	5.330			
7,100.0	7,052.3	7,108.8	7,051.3	17.1	18.5	90.00	75.3	-557.4	165.3	134.1	31.12	5.310			
7,200.0	7,126.6	7,208.8	7,125.6	17.1	18.6	90.00	8.6	-557.4	165.3	133.9	31.33	5.275			
7,300.0	7,186.9	7,308.8	7,185.9	17.2	18.7	90.00	-71.1	-557.4	165.3	133.5	31.74	5.206			
7,400.0	7,230.8	7,408.8	7,229.8	17.4	18.8	90.00	-160.7	-557.4	165.3	132.8	32.46	5.091			
7,500.0	7,256.8	7,508.8	7,255.8	17.8	19.2	90.00	-257.1	-557.4	165.3	131.7	33.54	4.928			
7,528.3	7,260.8	7,537.1	7,259.7	17.9	19.3	89.97	-285.1	-557.4	165.3	131.3	33.92	4.871			
7,600.0	7,264.0	7,608.8	7,263.0	18.4	19.7	90.00	-356.7	-557.4	165.3	130.3	34.96	4.727			
7,700.0	7,263.5	7,708.8	7,262.5	19.2	20.4	90.00	-456.7	-557.4	165.3	128.5	36.71	4.502			
7,800.0	7,263.1	7,808.8	7,262.1	20.1	21.3	90.00	-556.7	-557.4	165.3	126.5	38.75	4.264			
7,900.0	7,262.6	7,908.8	7,261.6	21.2	22.3	90.00	-656.7	-557.4	165.3	124.2	41.06	4.025			
8,000.0	7,262.1	8,008.8	7,261.1	22.5	23.5	90.00	-756.7	-557.4	165.3	121.7	43.58	3.792			
8,100.0	7,261.7	8,108.8	7,260.7	23.8	24.7	90.00	-856.7	-557.4	165.3	119.0	46.28	3.571			
8,200.0	7,261.2	8,208.8	7,260.2	25.2	26.0	90.00	-956.7	-557.4	165.3	116.1	49.13	3.364			
8,300.0	7,260.7	8,308.8	7,259.7	26.6	27.5	90.00	-1,056.7	-557.4	165.3	113.2	52.10	3.172			
8,400.0	7,260.2	8,408.8	7,259.2	28.1	28.9	90.00	-1,156.7	-557.4	165.3	110.1	55.19	2.995			
8,500.0	7,259.8	8,508.8	7,258.8	29.7	30.4	90.00	-1,256.7	-557.4	165.3	106.9	58.36	2.832			
8,600.0	7,259.3	8,608.8	7,258.3	31.3	32.0	90.00	-1,356.7	-557.4	165.3	103.7	61.60	2.683			
8,700.0	7,258.8	8,708.8	7,257.8	32.9	33.6	90.00	-1,456.7	-557.4	165.3	100.3	64.91	2.546			
8,800.0	7,258.4	8,808.8	7,257.4	34.6	35.2	90.00	-1,556.7	-557.4	165.3	97.0	68.28	2.420			
8,900.0	7,257.9	8,908.8	7,256.9	36.3	36.9	90.00	-1,656.7	-557.4	165.3	93.6	71.69	2.305			
9,000.0	7,257.4	9,008.8	7,256.4	38.0	38.6	90.00	-1,756.7	-557.4	165.3	90.1	75.14	2.199			
9,100.0	7,256.9	9,108.8	7,255.9	39.7	40.3	90.00	-1,856.7	-557.4	165.3	86.6	78.62	2.102			
9,200.0	7,256.5	9,208.8	7,255.5	41.4	42.0	90.00	-1,956.7	-557.4	165.3	83.1	82.14	2.012			
9,300.0	7,256.0	9,308.8	7,255.0	43.2	43.7	90.00	-2,056.7	-557.4	165.3	79.6	85.69	1.929			
9,400.0	7,255.5	9,408.8	7,254.5	45.0	45.5	90.00	-2,156.7	-557.4	165.3	76.0	89.25	1.852			
9,500.0	7,255.1	9,508.8	7,254.1	46.7	47.2	90.00	-2,256.7	-557.4	165.3	72.4	92.84	1.780			
9,600.0	7,254.6	9,608.8	7,253.6	48.5	49.0	90.00	-2,356.7	-557.4	165.3	68.8	96.45	1.713			
9,700.0	7,254.1	9,708.8	7,253.1	50.3	50.8	90.00	-2,456.7	-557.4	165.3	65.2	100.07	1.651			
9,800.0	7,253.7	9,808.8	7,252.7	52.1	52.6	90.00	-2,556.7	-557.4	165.3	61.5	103.71	1.593			
9,900.0	7,253.2	9,908.8	7,252.2	54.0	54.4	90.00	-2,656.7	-557.4	165.3	57.9	107.37	1.539			
10,000.0	7,252.7	10,008.8	7,251.7	55.8	56.2	90.00	-2,756.7	-557.4	165.3	54.2	111.03	1.488	Level 3		
10,100.0	7,252.2	10,108.8	7,251.2	57.6	58.0	90.00	-2,856.7	-557.4	165.3	50.5	114.70	1.441	Level 3		
10,200.0	7,251.8	10,208.8	7,250.8	59.4	59.9	90.00	-2,956.7	-557.4	165.3	46.9	118.39	1.396	Level 3		

CC - Min centre to center distance or convergent point, SF - min separation factor, ES - min ellipse separation

<b>Company:</b>	Verdad Oil & Gas Corporation	<b>Local Co-ordinate Reference:</b>	Well Young 01N-65W-28-3N
<b>Project:</b>	SEC.28-T1N-R65W	<b>TVD Reference:</b>	WELL @ 5084.0ft (Original Well Elev)
<b>Reference Site:</b>	Young 01N-65W-28 Pad Sec.28-T1N-R65W	<b>MD Reference:</b>	WELL @ 5084.0ft (Original Well Elev)
<b>Site Error:</b>	0.0ft	<b>North Reference:</b>	True
<b>Reference Well:</b>	Young 01N-65W-28-3N	<b>Survey Calculation Method:</b>	Minimum Curvature
<b>Well Error:</b>	0.0ft	<b>Output errors are at</b>	2.00 sigma
<b>Reference Wellbore</b>	Wellbore #1	<b>Database:</b>	Landmark
<b>Reference Design:</b>	Plan #1 (8-29-14)	<b>Offset TVD Reference:</b>	Offset Datum

Offset Design													Offset Site Error:	0.0 ft	
Survey Program: 0-MWD													Offset Well Error:		0.0 ft
Reference		Offset		Semi Major Axis			Distance						Warning		
Measured Depth (ft)	Vertical Depth (ft)	Measured Depth (ft)	Vertical Depth (ft)	Reference (ft)	Offset (ft)	Highside Toolface (°)	Offset Wellbore Centre +N/-S (ft)	+E/-W (ft)	Between Centres (ft)	Between Ellipses (ft)	Minimum Separation (ft)	Separation Factor			
10,300.0	7,251.3	10,308.8	7,250.3	61.3	61.7	90.00	-3,056.7	-557.4	165.3	43.2	122.08	1.354	Level 3		
10,400.0	7,250.8	10,408.8	7,249.8	63.1	63.5	90.00	-3,156.7	-557.4	165.3	39.5	125.79	1.314	Level 3		
10,500.0	7,250.4	10,508.8	7,249.4	65.0	65.4	90.00	-3,256.7	-557.4	165.3	35.8	129.50	1.276	Level 3		
10,600.0	7,249.9	10,608.8	7,248.9	66.8	67.2	90.00	-3,356.7	-557.4	165.3	32.0	133.21	1.241	Level 2		
10,700.0	7,249.4	10,708.8	7,248.4	68.7	69.0	90.00	-3,456.7	-557.4	165.3	28.3	136.94	1.207	Level 2		
10,800.0	7,248.9	10,808.8	7,247.9	70.5	70.9	90.00	-3,556.7	-557.4	165.3	24.6	140.66	1.175	Level 2		
10,900.0	7,248.5	10,908.8	7,247.5	72.4	72.7	90.00	-3,656.7	-557.4	165.3	20.9	144.40	1.144	Level 2		
11,000.0	7,248.0	11,008.8	7,247.0	74.3	74.6	90.00	-3,756.7	-557.4	165.3	17.1	148.14	1.116	Level 2		
11,100.0	7,247.5	11,108.8	7,246.5	76.1	76.5	90.00	-3,856.7	-557.4	165.3	13.4	151.88	1.088	Level 2		
11,200.0	7,247.1	11,208.8	7,246.1	78.0	78.3	90.00	-3,956.7	-557.4	165.3	9.6	155.63	1.062	Level 2		
11,300.0	7,246.6	11,308.8	7,245.6	79.9	80.2	90.00	-4,056.7	-557.4	165.3	5.9	159.38	1.037	Level 2		
11,400.0	7,246.1	11,408.8	7,245.1	81.7	82.1	90.00	-4,156.7	-557.4	165.3	2.1	163.14	1.013	Level 2		
11,500.0	7,245.6	11,508.8	7,244.6	83.6	83.9	90.00	-4,256.7	-557.4	165.3	-1.6	166.89	0.990	Level 1		
11,600.0	7,245.2	11,608.8	7,244.2	85.5	85.8	90.00	-4,356.7	-557.4	165.3	-5.4	170.66	0.968	Level 1		
11,700.0	7,244.7	11,708.8	7,243.7	87.4	87.7	90.00	-4,456.7	-557.4	165.3	-9.2	174.42	0.947	Level 1		
11,800.0	7,244.2	11,808.8	7,243.2	89.3	89.5	90.00	-4,556.7	-557.4	165.3	-12.9	178.19	0.927	Level 1		
11,826.6	7,244.1	11,835.5	7,243.1	89.8	90.0	90.00	-4,583.3	-557.4	165.3	-13.9	179.19	0.922	Level 1		
11,848.6	7,244.0	11,856.7	7,243.0	90.2	90.4	90.00	-4,604.6	-557.4	165.3	-14.8	180.01	0.918	Level 1, ES, SF		

<b>Company:</b>	Verdad Oil & Gas Corporation	<b>Local Co-ordinate Reference:</b>	Well Young 01N-65W-28-3N
<b>Project:</b>	SEC.28-T1N-R65W	<b>TVD Reference:</b>	WELL @ 5084.0ft (Original Well Elev)
<b>Reference Site:</b>	Young 01N-65W-28 Pad Sec.28-T1N-R65W	<b>MD Reference:</b>	WELL @ 5084.0ft (Original Well Elev)
<b>Site Error:</b>	0.0ft	<b>North Reference:</b>	True
<b>Reference Well:</b>	Young 01N-65W-28-3N	<b>Survey Calculation Method:</b>	Minimum Curvature
<b>Well Error:</b>	0.0ft	<b>Output errors are at</b>	2.00 sigma
<b>Reference Wellbore</b>	Wellbore #1	<b>Database:</b>	Landmark
<b>Reference Design:</b>	Plan #1 (8-29-14)	<b>Offset TVD Reference:</b>	Offset Datum

Offset Design													Offset Site Error:	0.0ft	
Survey Program: 0-MWD													Offset Well Error:		0.0ft
Reference				Offset		Semi Major Axis			Distance				Warning		
Measured Depth (ft)	Vertical Depth (ft)	Measured Depth (ft)	Vertical Depth (ft)	Reference (ft)	Offset (ft)	Highside Toolface (°)	Offset Wellbore Centre +N/-S (ft)	+E/-W (ft)	Between Centres (ft)	Between Ellipses (ft)	Minimum Separation (ft)	Separation Factor			
0.0	0.0	0.0	0.0	0.0	0.0	89.96	0.0	16.8	16.8	16.8	0.00	N/A			
100.0	100.0	100.0	100.0	0.1	0.1	89.96	0.0	16.8	16.8	16.6	0.22	74.756			
200.0	200.0	200.0	200.0	0.3	0.3	89.96	0.0	16.8	16.8	16.1	0.67	24.919			
300.0	300.0	300.0	300.0	0.6	0.6	89.96	0.0	16.8	16.8	15.7	1.12	14.951			
400.0	400.0	400.0	400.0	0.8	0.8	89.96	0.0	16.8	16.8	15.2	1.57	10.679			
500.0	500.0	500.0	500.0	1.0	1.0	89.96	0.0	16.8	16.8	14.8	2.02	8.306			
600.0	600.0	600.0	600.0	1.2	1.2	89.96	0.0	16.8	16.8	14.3	2.47	6.796			
700.0	700.0	700.0	700.0	1.5	1.5	89.96	0.0	16.8	16.8	13.9	2.92	5.750			
800.0	800.0	800.0	800.0	1.7	1.7	89.96	0.0	16.8	16.8	13.4	3.37	4.984			
900.0	900.0	900.0	900.0	1.9	1.9	89.96	0.0	16.8	16.8	13.0	3.82	4.397			
1,000.0	1,000.0	1,000.0	1,000.0	2.1	2.1	89.96	0.0	16.8	16.8	12.5	4.27	3.935 CC			
1,100.0	1,100.0	1,100.0	1,100.0	2.4	2.4	157.90	0.0	16.8	18.4	13.7	4.71	3.907			
1,200.0	1,199.8	1,199.8	1,199.8	2.6	2.6	162.71	0.0	16.8	23.3	18.2	5.14	4.539			
1,300.0	1,299.5	1,299.5	1,299.5	2.8	2.8	167.35	0.0	16.8	31.8	26.2	5.57	5.703			
1,400.0	1,398.7	1,398.7	1,398.7	3.0	3.0	170.76	0.0	16.8	43.4	37.4	6.00	7.234			
1,500.0	1,498.0	1,498.8	1,499.7	3.3	3.3	172.22	1.0	15.4	54.1	47.6	6.44	8.401			
1,600.0	1,597.2	1,601.4	1,601.3	3.6	3.5	172.11	4.2	11.1	61.4	54.6	6.87	8.940			
1,700.0	1,696.4	1,703.5	1,702.9	3.9	3.7	170.93	9.6	3.9	65.5	58.2	7.32	8.951			
1,800.0	1,795.7	1,804.5	1,803.2	4.1	4.0	168.88	16.7	-5.7	66.7	58.9	7.77	8.588			
1,900.0	1,894.9	1,904.4	1,902.4	4.4	4.2	166.77	24.0	-15.6	67.6	59.4	8.23	8.221			
2,000.0	1,994.1	2,004.4	2,001.6	4.7	4.5	164.72	31.4	-25.5	68.6	59.9	8.69	7.895			
2,100.0	2,093.3	2,104.4	2,100.8	5.0	4.7	162.73	38.7	-35.4	69.7	60.6	9.17	7.603			
2,200.0	2,192.6	2,204.3	2,200.0	5.3	5.0	160.81	46.0	-45.3	70.9	61.2	9.66	7.342			
2,300.0	2,291.8	2,304.3	2,299.2	5.6	5.3	158.95	53.3	-55.2	72.1	62.0	10.15	7.106			
2,400.0	2,391.0	2,404.3	2,398.4	5.9	5.6	157.15	60.6	-65.0	73.5	62.8	10.66	6.892			
2,500.0	2,490.3	2,504.2	2,497.6	6.2	5.9	155.42	68.0	-74.9	74.9	63.7	11.17	6.699			
2,600.0	2,589.5	2,604.2	2,596.8	6.6	6.1	153.76	75.3	-84.8	76.3	64.6	11.70	6.522			
2,700.0	2,688.7	2,704.2	2,696.1	6.9	6.4	152.15	82.6	-94.7	77.8	65.6	12.23	6.361			
2,800.0	2,787.9	2,804.1	2,795.3	7.2	6.7	150.61	89.9	-104.6	79.4	66.6	12.78	6.214			
2,900.0	2,887.2	2,904.1	2,894.5	7.5	7.0	149.14	97.2	-114.4	81.0	67.7	13.33	6.079			
3,000.0	2,986.4	3,004.1	2,993.7	7.8	7.3	147.72	104.6	-124.3	82.7	68.8	13.89	5.956			
3,100.0	3,085.6	3,104.0	3,092.9	8.1	7.6	146.36	111.9	-134.2	84.5	70.0	14.46	5.842			
3,200.0	3,184.9	3,204.0	3,192.1	8.4	7.9	145.05	119.2	-144.1	86.2	71.2	15.03	5.737			
3,300.0	3,284.1	3,304.0	3,291.3	8.7	8.2	143.80	126.5	-154.0	88.1	72.4	15.61	5.640			
3,400.0	3,383.3	3,403.9	3,390.5	9.1	8.6	142.59	133.8	-163.9	89.9	73.7	16.20	5.551			
3,500.0	3,482.5	3,503.9	3,489.7	9.4	8.9	141.44	141.2	-173.7	91.8	75.0	16.79	5.469			
3,600.0	3,581.8	3,603.9	3,588.9	9.7	9.2	140.34	148.5	-183.6	93.8	76.4	17.39	5.392			
3,700.0	3,681.0	3,703.8	3,688.1	10.0	9.5	139.28	155.8	-193.5	95.7	77.7	17.99	5.321			
3,800.0	3,780.2	3,803.8	3,787.3	10.3	9.8	138.26	163.1	-203.4	97.7	79.1	18.60	5.255			
3,900.0	3,879.5	3,903.0	3,885.8	10.7	10.1	137.41	170.2	-213.0	99.9	80.7	19.18	5.208			
4,000.0	3,978.7	4,000.0	3,982.4	11.0	10.3	137.85	175.6	-220.2	103.7	84.1	19.64	5.280			
4,100.0	4,077.9	4,098.5	4,080.7	11.3	10.5	139.68	179.0	-224.9	109.6	89.6	20.00	5.477			
4,200.0	4,177.1	4,195.6	4,177.7	11.6	10.7	142.56	180.5	-226.8	117.7	97.4	20.28	5.804			
4,300.0	4,276.4	4,294.2	4,276.4	11.9	10.8	145.89	180.5	-226.9	127.7	107.2	20.52	6.223			
4,400.0	4,375.6	4,393.4	4,375.6	12.2	11.0	148.77	180.5	-226.9	138.2	117.4	20.82	6.638			
4,500.0	4,474.9	4,492.7	4,474.9	12.6	11.2	151.24	180.5	-226.9	148.8	127.7	21.13	7.042			
4,600.0	4,574.4	4,592.2	4,574.4	12.8	11.4	153.00	180.5	-226.9	157.3	135.9	21.45	7.335			
4,700.0	4,674.2	4,692.0	4,674.2	13.0	11.6	154.03	180.5	-226.9	162.8	141.0	21.78	7.476			
4,800.0	4,774.2	4,792.0	4,774.2	13.1	11.8	154.45	180.5	-226.9	165.2	143.1	22.11	7.471			
4,900.0	4,874.2	4,892.0	4,874.2	13.3	12.0	88.75	180.5	-226.9	165.3	142.8	22.49	7.349			
5,000.0	4,974.2	4,992.0	4,974.2	13.5	12.2	88.75	180.5	-226.9	165.3	142.4	22.90	7.219			
5,100.0	5,074.2	5,092.0	5,074.2	13.6	12.4	88.75	180.5	-226.9	165.3	142.0	23.31	7.092			

CC - Min centre to center distance or convergent point, SF - min separation factor, ES - min ellipse separation

<b>Company:</b>	Verdad Oil & Gas Corporation	<b>Local Co-ordinate Reference:</b>	Well Young 01N-65W-28-3N
<b>Project:</b>	SEC.28-T1N-R65W	<b>TVD Reference:</b>	WELL @ 5084.0ft (Original Well Elev)
<b>Reference Site:</b>	Young 01N-65W-28 Pad Sec.28-T1N-R65W	<b>MD Reference:</b>	WELL @ 5084.0ft (Original Well Elev)
<b>Site Error:</b>	0.0ft	<b>North Reference:</b>	True
<b>Reference Well:</b>	Young 01N-65W-28-3N	<b>Survey Calculation Method:</b>	Minimum Curvature
<b>Well Error:</b>	0.0ft	<b>Output errors are at</b>	2.00 sigma
<b>Reference Wellbore</b>	Wellbore #1	<b>Database:</b>	Landmark
<b>Reference Design:</b>	Plan #1 (8-29-14)	<b>Offset TVD Reference:</b>	Offset Datum

Offset Design													Offset Site Error:	0.0 ft	
Survey Program: 0-MWD													Offset Well Error:		0.0 ft
Reference		Offset		Semi Major Axis			Distance						Warning		
Measured Depth (ft)	Vertical Depth (ft)	Measured Depth (ft)	Vertical Depth (ft)	Reference (ft)	Offset (ft)	Highside Toolface (°)	Offset Wellbore Centre +N/-S (ft)	+E/-W (ft)	Between Centres (ft)	Between Ellipses (ft)	Minimum Separation (ft)	Separation Factor			
5,200.0	5,174.2	5,192.0	5,174.2	13.8	12.6	88.75	180.5	-226.9	165.3	141.6	23.72	6.970			
5,300.0	5,274.2	5,292.0	5,274.2	14.0	12.8	88.75	180.5	-226.9	165.3	141.2	24.13	6.851			
5,400.0	5,374.2	5,392.0	5,374.2	14.2	13.0	88.75	180.5	-226.9	165.3	140.8	24.54	6.736			
5,500.0	5,474.2	5,492.0	5,474.2	14.4	13.2	88.75	180.5	-226.9	165.3	140.3	24.95	6.624			
5,600.0	5,574.2	5,592.0	5,574.2	14.5	13.4	88.75	180.5	-226.9	165.3	139.9	25.37	6.516			
5,700.0	5,674.2	5,692.0	5,674.2	14.7	13.6	88.75	180.5	-226.9	165.3	139.5	25.78	6.410			
5,800.0	5,774.2	5,792.0	5,774.2	14.9	13.8	88.75	180.5	-226.9	165.3	139.1	26.20	6.308			
5,900.0	5,874.2	5,892.0	5,874.2	15.1	14.0	88.75	180.5	-226.9	165.3	138.7	26.62	6.209			
6,000.0	5,974.2	5,992.0	5,974.2	15.3	14.2	88.75	180.5	-226.9	165.3	138.3	27.04	6.113			
6,100.0	6,074.2	6,092.0	6,074.2	15.5	14.4	88.75	180.5	-226.9	165.3	137.8	27.46	6.019			
6,200.0	6,174.2	6,192.0	6,174.2	15.7	14.6	88.75	180.5	-226.9	165.3	137.4	27.88	5.928			
6,300.0	6,274.2	6,292.0	6,274.2	15.9	14.8	88.75	180.5	-226.9	165.3	137.0	28.30	5.840			
6,400.0	6,374.2	6,392.0	6,374.2	16.0	15.0	88.75	180.5	-226.9	165.3	136.6	28.73	5.754			
6,500.0	6,474.2	6,492.0	6,474.2	16.2	15.2	88.75	180.5	-226.9	165.3	136.1	29.15	5.670			
6,600.0	6,574.2	6,592.0	6,574.2	16.4	15.4	88.75	180.5	-226.9	165.3	135.7	29.58	5.589			
6,700.0	6,674.2	6,692.0	6,674.2	16.6	15.6	88.75	180.5	-226.9	165.3	135.3	30.00	5.510			
6,800.0	6,774.1	6,792.2	6,774.3	16.8	15.8	-91.25	179.6	-226.9	165.3	134.9	30.41	5.436			
6,900.0	6,872.8	6,892.9	6,873.7	16.9	16.0	-91.21	163.9	-226.9	165.3	134.7	30.64	5.395			
7,000.0	6,966.7	6,993.5	6,968.1	17.0	16.0	-91.13	129.5	-226.9	165.3	134.5	30.76	5.373			
7,100.0	7,052.3	7,094.1	7,054.1	17.1	16.1	-91.01	77.6	-226.9	165.3	134.4	30.86	5.357			
7,200.0	7,126.6	7,194.7	7,128.4	17.1	16.1	-90.85	10.2	-226.9	165.3	134.2	31.04	5.324			
7,300.0	7,186.9	7,295.1	7,188.5	17.2	16.2	-90.65	-70.1	-226.9	165.3	133.8	31.44	5.256			
7,400.0	7,230.8	7,395.4	7,232.0	17.4	16.4	-90.44	-160.3	-226.9	165.3	133.1	32.16	5.139			
7,500.0	7,256.8	7,495.5	7,257.4	17.8	16.9	-90.20	-257.1	-226.9	165.3	132.0	33.23	4.973			
7,600.0	7,264.9	7,595.5	7,264.0	18.4	17.6	-89.69	-356.7	-226.9	165.3	130.6	34.64	4.770			
7,600.0	7,264.0	7,595.6	7,264.0	18.4	17.6	-89.99	-356.7	-226.9	165.3	130.6	34.65	4.769			
7,700.0	7,263.5	7,695.6	7,263.5	19.2	18.5	-89.99	-456.7	-226.9	165.3	128.8	36.41	4.538			
7,800.0	7,263.1	7,795.6	7,263.1	20.1	19.5	-89.99	-556.7	-226.9	165.3	126.8	38.47	4.295			
7,900.0	7,262.6	7,895.6	7,262.6	21.2	20.6	-89.99	-656.7	-226.9	165.3	124.5	40.79	4.051			
8,000.0	7,262.1	7,995.6	7,262.1	22.5	21.9	-89.99	-756.7	-226.9	165.3	121.9	43.32	3.815			
8,100.0	7,261.7	8,095.6	7,261.6	23.8	23.2	-89.99	-856.7	-226.9	165.3	119.2	46.03	3.590			
8,200.0	7,261.2	8,195.6	7,261.2	25.2	24.7	-89.99	-956.7	-226.9	165.3	116.4	48.89	3.380			
8,300.0	7,260.7	8,295.6	7,260.7	26.6	26.2	-89.99	-1,056.7	-226.9	165.3	113.4	51.88	3.185			
8,400.0	7,260.2	8,395.6	7,260.2	28.1	27.7	-89.99	-1,156.7	-226.9	165.3	110.3	54.97	3.006			
8,500.0	7,259.8	8,495.6	7,259.8	29.7	29.3	-89.99	-1,256.7	-226.9	165.3	107.1	58.15	2.842			
8,600.0	7,259.3	8,595.6	7,259.3	31.3	30.9	-89.99	-1,356.7	-226.9	165.3	103.8	61.41	2.691			
8,700.0	7,258.8	8,695.6	7,258.8	32.9	32.5	-89.99	-1,456.7	-226.9	165.3	100.5	64.72	2.553			
8,800.0	7,258.4	8,795.6	7,258.3	34.6	34.2	-89.99	-1,556.7	-226.9	165.3	97.2	68.09	2.427			
8,900.0	7,257.9	8,895.6	7,257.9	36.3	35.9	-89.99	-1,656.7	-226.9	165.3	93.7	71.51	2.311			
9,000.0	7,257.4	8,995.6	7,257.4	38.0	37.6	-89.99	-1,756.7	-226.9	165.3	90.3	74.97	2.204			
9,100.0	7,256.9	9,095.6	7,256.9	39.7	39.4	-89.99	-1,856.7	-226.9	165.3	86.8	78.46	2.106			
9,200.0	7,256.5	9,195.6	7,256.5	41.4	41.1	-89.99	-1,956.7	-226.9	165.3	83.3	81.98	2.016			
9,300.0	7,256.0	9,295.6	7,256.0	43.2	42.9	-89.99	-2,056.7	-226.9	165.3	79.7	85.53	1.932			
9,400.0	7,255.5	9,395.6	7,255.5	45.0	44.7	-89.99	-2,156.7	-226.9	165.3	76.1	89.10	1.855			
9,500.0	7,255.1	9,495.6	7,255.0	46.7	46.5	-89.99	-2,256.7	-226.9	165.3	72.6	92.70	1.783			
9,600.0	7,254.6	9,595.6	7,254.6	48.5	48.3	-89.99	-2,356.7	-226.9	165.3	68.9	96.31	1.716			
9,700.0	7,254.1	9,695.6	7,254.1	50.3	50.1	-89.99	-2,456.7	-226.9	165.3	65.3	99.94	1.654			
9,800.0	7,253.7	9,795.6	7,253.6	52.1	51.9	-89.99	-2,556.7	-226.9	165.3	61.7	103.58	1.595			
9,900.0	7,253.2	9,895.6	7,253.2	54.0	53.7	-89.99	-2,656.7	-226.9	165.3	58.0	107.23	1.541			
10,000.0	7,252.7	9,995.6	7,252.7	55.8	55.6	-89.99	-2,756.7	-226.9	165.3	54.4	110.90	1.490	Level 3		
10,100.0	7,252.2	10,095.6	7,252.2	57.6	57.4	-89.99	-2,856.7	-226.9	165.3	50.7	114.58	1.442	Level 3		
10,200.0	7,251.8	10,195.6	7,251.7	59.4	59.2	-89.99	-2,956.7	-226.9	165.3	47.0	118.27	1.397	Level 3		

CC - Min centre to center distance or convergent point, SF - min separation factor, ES - min ellipse separation

<b>Company:</b>	Verdad Oil & Gas Corporation	<b>Local Co-ordinate Reference:</b>	Well Young 01N-65W-28-3N
<b>Project:</b>	SEC.28-T1N-R65W	<b>TVD Reference:</b>	WELL @ 5084.0ft (Original Well Elev)
<b>Reference Site:</b>	Young 01N-65W-28 Pad Sec.28-T1N-R65W	<b>MD Reference:</b>	WELL @ 5084.0ft (Original Well Elev)
<b>Site Error:</b>	0.0ft	<b>North Reference:</b>	True
<b>Reference Well:</b>	Young 01N-65W-28-3N	<b>Survey Calculation Method:</b>	Minimum Curvature
<b>Well Error:</b>	0.0ft	<b>Output errors are at</b>	2.00 sigma
<b>Reference Wellbore</b>	Wellbore #1	<b>Database:</b>	Landmark
<b>Reference Design:</b>	Plan #1 (8-29-14)	<b>Offset TVD Reference:</b>	Offset Datum

Offset Design													Offset Site Error:	0.0 ft	
Survey Program: 0-MWD													Offset Well Error:		0.0 ft
Reference		Offset		Semi Major Axis			Distance						Warning		
Measured Depth (ft)	Vertical Depth (ft)	Measured Depth (ft)	Vertical Depth (ft)	Reference (ft)	Offset (ft)	Highside Toolface (°)	Offset Wellbore Centre +N/-S (ft)	+E/-W (ft)	Between Centres (ft)	Between Ellipses (ft)	Minimum Separation (ft)	Separation Factor			
10,300.0	7,251.3	10,295.6	7,251.3	61.3	61.1	-89.99	-3,056.7	-226.9	165.3	43.3	121.96	1.355	Level 3		
10,400.0	7,250.8	10,395.6	7,250.8	63.1	62.9	-89.99	-3,156.7	-226.9	165.3	39.6	125.67	1.315	Level 3		
10,500.0	7,250.4	10,495.6	7,250.3	65.0	64.8	-89.99	-3,256.7	-226.9	165.3	35.9	129.38	1.277	Level 3		
10,600.0	7,249.9	10,595.6	7,249.9	66.8	66.6	-89.99	-3,356.7	-226.9	165.3	32.2	133.10	1.242	Level 2		
10,700.0	7,249.4	10,695.6	7,249.4	68.7	68.5	-89.99	-3,456.7	-226.9	165.3	28.4	136.82	1.208	Level 2		
10,800.0	7,248.9	10,795.6	7,248.9	70.5	70.4	-89.99	-3,556.7	-226.9	165.3	24.7	140.55	1.176	Level 2		
10,900.0	7,248.5	10,895.6	7,248.4	72.4	72.2	-89.99	-3,656.7	-226.9	165.3	21.0	144.29	1.145	Level 2		
11,000.0	7,248.0	10,995.6	7,248.0	74.3	74.1	-89.99	-3,756.7	-226.9	165.3	17.2	148.03	1.116	Level 2		
11,100.0	7,247.5	11,095.6	7,247.5	76.1	76.0	-89.99	-3,856.7	-226.9	165.3	13.5	151.78	1.089	Level 2		
11,200.0	7,247.1	11,195.6	7,247.0	78.0	77.8	-89.99	-3,956.7	-226.9	165.3	9.7	155.53	1.063	Level 2		
11,300.0	7,246.6	11,295.6	7,246.6	79.9	79.7	-89.99	-4,056.7	-226.9	165.3	6.0	159.28	1.038	Level 2		
11,400.0	7,246.1	11,395.6	7,246.1	81.7	81.6	-89.99	-4,156.7	-226.9	165.3	2.2	163.04	1.014	Level 2		
11,500.0	7,245.6	11,495.6	7,245.6	83.6	83.5	-89.99	-4,256.7	-226.9	165.3	-1.5	166.80	0.991	Level 1		
11,600.0	7,245.2	11,595.6	7,245.2	85.5	85.4	-89.99	-4,356.7	-226.9	165.3	-5.3	170.56	0.969	Level 1		
11,700.0	7,244.7	11,695.6	7,244.7	87.4	87.2	-89.99	-4,456.7	-226.9	165.3	-9.1	174.33	0.948	Level 1		
11,800.0	7,244.2	11,795.6	7,244.2	89.3	89.1	-89.99	-4,556.7	-226.9	165.3	-12.8	178.09	0.928	Level 1		
11,825.3	7,244.1	11,820.9	7,244.1	89.7	89.6	-89.99	-4,582.0	-226.9	165.3	-13.8	179.05	0.923	Level 1		
11,848.6	7,244.0	11,839.8	7,244.0	90.2	90.0	-89.99	-4,600.9	-226.9	165.3	-14.5	179.84	0.919	Level 1, ES, SF		

<b>Company:</b>	Verdad Oil & Gas Corporation	<b>Local Co-ordinate Reference:</b>	Well Young 01N-65W-28-3N
<b>Project:</b>	SEC.28-T1N-R65W	<b>TVD Reference:</b>	WELL @ 5084.0ft (Original Well Elev)
<b>Reference Site:</b>	Young 01N-65W-28 Pad Sec.28-T1N-R65W	<b>MD Reference:</b>	WELL @ 5084.0ft (Original Well Elev)
<b>Site Error:</b>	0.0ft	<b>North Reference:</b>	True
<b>Reference Well:</b>	Young 01N-65W-28-3N	<b>Survey Calculation Method:</b>	Minimum Curvature
<b>Well Error:</b>	0.0ft	<b>Output errors are at</b>	2.00 sigma
<b>Reference Wellbore</b>	Wellbore #1	<b>Database:</b>	Landmark
<b>Reference Design:</b>	Plan #1 (8-29-14)	<b>Offset TVD Reference:</b>	Offset Datum

Offset Design													Offset Site Error:	0.0 ft	
Survey Program: 0-MWD													Offset Well Error:		0.0 ft
Reference				Offset			Semi Major Axis			Distance				Warning	
Measured Depth (ft)	Vertical Depth (ft)	Measured Depth (ft)	Vertical Depth (ft)	Reference (ft)	Offset (ft)	Highside Toolface (°)	Offset Wellbore Centre +N/-S (ft)	+E/-W (ft)	Between Centres (ft)	Between Ellipses (ft)	Minimum Separation (ft)	Separation Factor			
0.0	0.0	1.0	1.0	0.0	0.0	89.98	0.0	30.8	30.8	30.8	0.00	N/A			
100.0	100.0	101.0	101.0	0.1	0.1	89.98	0.0	30.8	30.8	30.6	0.23	135.696			
200.0	200.0	201.0	201.0	0.3	0.3	89.98	0.0	30.8	30.8	30.1	0.68	45.533			
300.0	300.0	301.0	301.0	0.6	0.6	89.98	0.0	30.8	30.8	29.7	1.13	27.356			
400.0	400.0	401.0	401.0	0.8	0.8	89.98	0.0	30.8	30.8	29.2	1.58	19.551			
500.0	500.0	501.0	501.0	1.0	1.0	89.98	0.0	30.8	30.8	28.8	2.03	15.211			
600.0	600.0	601.0	601.0	1.2	1.2	89.98	0.0	30.8	30.8	28.3	2.47	12.448			
700.0	700.0	701.0	701.0	1.5	1.5	89.98	0.0	30.8	30.8	27.9	2.92	10.534			
800.0	800.0	801.0	801.0	1.7	1.7	89.98	0.0	30.8	30.8	27.4	3.37	9.131			
900.0	900.0	901.0	901.0	1.9	1.9	89.98	0.0	30.8	30.8	27.0	3.82	8.057			
1,000.0	1,000.0	1,001.0	1,001.0	2.1	2.1	89.98	0.0	30.8	30.8	26.5	4.27	7.210	CC, ES		
1,100.0	1,100.0	1,101.0	1,101.0	2.4	2.4	156.95	0.0	30.8	32.4	27.7	4.71	6.875			
1,200.0	1,199.8	1,200.8	1,200.8	2.6	2.6	160.07	0.0	30.8	37.3	32.1	5.14	7.246			
1,300.0	1,299.5	1,300.5	1,300.5	2.8	2.8	163.76	0.0	30.8	45.6	40.0	5.57	8.176			
1,400.0	1,398.7	1,399.7	1,399.7	3.0	3.0	167.06	0.0	30.8	57.0	51.0	6.00	9.501			
1,500.0	1,498.0	1,499.0	1,499.0	3.3	3.3	169.36	0.0	30.8	69.2	62.7	6.45	10.735			
1,600.0	1,597.2	1,598.2	1,598.2	3.6	3.5	170.97	0.0	30.8	81.4	74.5	6.89	11.817			
1,700.0	1,696.4	1,699.1	1,699.1	3.9	3.7	171.60	1.2	30.2	92.8	85.5	7.34	12.651			
1,800.0	1,795.7	1,800.4	1,800.3	4.1	3.9	171.00	4.7	28.4	102.4	94.6	7.78	13.158			
1,900.0	1,894.9	1,901.9	1,901.6	4.4	4.2	169.46	10.6	25.4	110.3	102.0	8.24	13.389			
2,000.0	1,994.1	2,003.5	2,002.8	4.7	4.4	167.11	19.0	21.1	116.5	107.8	8.70	13.395			
2,100.0	2,093.3	2,103.9	2,102.5	5.0	4.6	164.24	29.0	15.9	121.8	112.6	9.18	13.270			
2,200.0	2,192.6	2,203.6	2,201.5	5.3	4.9	161.57	39.2	10.7	127.2	117.5	9.66	13.161			
2,300.0	2,291.8	2,303.3	2,300.6	5.6	5.1	159.12	49.3	5.5	132.8	122.7	10.16	13.071			
2,400.0	2,391.0	2,402.9	2,399.6	5.9	5.4	156.88	59.5	0.4	138.7	128.0	10.67	12.996			
2,500.0	2,490.3	2,502.6	2,498.6	6.2	5.7	154.82	69.6	-4.8	144.8	133.6	11.19	12.934			
2,600.0	2,589.5	2,602.3	2,597.6	6.6	5.9	152.93	79.8	-10.0	151.0	139.3	11.72	12.881			
2,700.0	2,688.7	2,702.0	2,696.7	6.9	6.2	151.19	89.9	-15.2	157.4	145.1	12.26	12.837			
2,800.0	2,787.9	2,801.7	2,795.7	7.2	6.5	149.59	100.1	-20.4	163.9	151.1	12.81	12.798			
2,900.0	2,887.2	2,901.4	2,894.7	7.5	6.7	148.11	110.2	-25.6	170.6	157.2	13.36	12.766			
3,000.0	2,986.4	3,001.1	2,993.8	7.8	7.0	146.74	120.4	-30.8	177.3	163.4	13.92	12.738			
3,100.0	3,085.6	3,100.7	3,092.8	8.1	7.3	145.47	130.5	-36.0	184.2	169.7	14.49	12.713			
3,200.0	3,184.9	3,200.4	3,191.8	8.4	7.6	144.30	140.7	-41.2	191.1	176.1	15.06	12.693			
3,300.0	3,284.1	3,300.1	3,290.9	8.7	7.9	143.20	150.8	-46.4	198.1	182.5	15.63	12.675			
3,400.0	3,383.3	3,399.5	3,389.6	9.1	8.2	142.21	160.8	-51.5	205.2	189.0	16.20	12.669			
3,500.0	3,482.5	3,497.9	3,487.6	9.4	8.4	141.79	169.1	-55.8	212.8	196.1	16.69	12.748			
3,600.0	3,581.8	3,596.3	3,585.7	9.7	8.6	142.03	175.2	-58.9	221.0	203.8	17.15	12.883			
3,700.0	3,681.0	3,694.4	3,683.8	10.0	8.8	142.88	178.9	-60.8	229.8	212.2	17.58	13.072			
3,800.0	3,780.2	3,792.2	3,781.5	10.3	8.9	144.24	180.5	-61.6	239.3	221.4	17.97	13.319			
3,900.0	3,879.5	3,891.1	3,880.5	10.7	9.1	145.88	180.5	-61.6	249.5	231.1	18.35	13.594			
4,000.0	3,978.7	3,990.4	3,979.7	11.0	9.3	147.41	180.5	-61.6	259.9	241.1	18.76	13.853			
4,100.0	4,077.9	4,089.6	4,078.9	11.3	9.5	148.82	180.5	-61.6	270.4	251.3	19.17	14.107			
4,200.0	4,177.1	4,188.8	4,178.1	11.6	9.7	150.13	180.5	-61.6	281.1	261.5	19.58	14.356			
4,300.0	4,276.4	4,288.0	4,277.4	11.9	9.9	151.34	180.5	-61.6	292.0	272.0	20.00	14.599			
4,400.0	4,375.6	4,387.3	4,376.6	12.2	10.1	152.46	180.5	-61.6	302.9	282.5	20.42	14.836			
4,500.0	4,474.9	4,486.5	4,475.9	12.6	10.3	153.52	180.5	-61.6	313.8	293.0	20.84	15.060			
4,600.0	4,574.4	4,586.1	4,575.4	12.8	10.5	154.36	180.5	-61.6	322.5	301.2	21.23	15.188			
4,700.0	4,674.2	4,685.9	4,675.2	13.0	10.7	154.87	180.5	-61.6	328.0	306.4	21.61	15.178			
4,800.0	4,774.2	4,785.8	4,775.2	13.1	11.0	155.08	180.5	-61.6	330.4	308.4	21.98	15.036			
4,900.0	4,874.2	4,885.8	4,875.2	13.3	11.2	89.37	180.5	-61.6	330.5	308.2	22.36	14.780			
5,000.0	4,974.2	4,985.8	4,975.2	13.5	11.4	89.37	180.5	-61.6	330.5	307.8	22.78	14.513			
5,100.0	5,074.2	5,085.8	5,075.2	13.6	11.6	89.37	180.5	-61.6	330.5	307.3	23.19	14.254			

CC - Min centre to center distance or convergent point, SF - min separation factor, ES - min ellipse separation

<b>Company:</b>	Verdad Oil & Gas Corporation	<b>Local Co-ordinate Reference:</b>	Well Young 01N-65W-28-3N
<b>Project:</b>	SEC.28-T1N-R65W	<b>TVD Reference:</b>	WELL @ 5084.0ft (Original Well Elev)
<b>Reference Site:</b>	Young 01N-65W-28 Pad Sec.28-T1N-R65W	<b>MD Reference:</b>	WELL @ 5084.0ft (Original Well Elev)
<b>Site Error:</b>	0.0ft	<b>North Reference:</b>	True
<b>Reference Well:</b>	Young 01N-65W-28-3N	<b>Survey Calculation Method:</b>	Minimum Curvature
<b>Well Error:</b>	0.0ft	<b>Output errors are at</b>	2.00 sigma
<b>Reference Wellbore</b>	Wellbore #1	<b>Database:</b>	Landmark
<b>Reference Design:</b>	Plan #1 (8-29-14)	<b>Offset TVD Reference:</b>	Offset Datum

Offset Design													Offset Site Error:	0.0 ft	
Survey Program: 0-MWD													Offset Well Error:		0.0 ft
Reference		Offset		Semi Major Axis			Distance						Warning		
Measured Depth (ft)	Vertical Depth (ft)	Measured Depth (ft)	Vertical Depth (ft)	Reference (ft)	Offset (ft)	Highside Toolface (°)	Offset Wellbore Centre +N/-S (ft)	+E/-W (ft)	Between Centres (ft)	Between Ellipses (ft)	Minimum Separation (ft)	Separation Factor			
5,200.0	5,174.2	5,185.8	5,175.2	13.8	11.8	89.37	180.5	-61.6	330.5	306.9	23.60	14.003			
5,300.0	5,274.2	5,285.8	5,275.2	14.0	12.0	89.37	180.5	-61.6	330.5	306.5	24.02	13.761			
5,400.0	5,374.2	5,385.8	5,375.2	14.2	12.2	89.37	180.5	-61.6	330.5	306.1	24.44	13.526			
5,500.0	5,474.2	5,485.8	5,475.2	14.4	12.4	89.37	180.5	-61.6	330.5	305.7	24.85	13.298			
5,600.0	5,574.2	5,585.8	5,575.2	14.5	12.7	89.37	180.5	-61.6	330.5	305.3	25.27	13.078			
5,700.0	5,674.2	5,685.8	5,675.2	14.7	12.9	89.37	180.5	-61.6	330.5	304.8	25.69	12.864			
5,800.0	5,774.2	5,785.8	5,775.2	14.9	13.1	89.37	180.5	-61.6	330.5	304.4	26.12	12.656			
5,900.0	5,874.2	5,885.8	5,875.2	15.1	13.3	89.37	180.5	-61.6	330.5	304.0	26.54	12.455			
6,000.0	5,974.2	5,985.8	5,975.2	15.3	13.5	89.37	180.5	-61.6	330.5	303.6	26.96	12.259			
6,100.0	6,074.2	6,085.8	6,075.2	15.5	13.7	89.37	180.5	-61.6	330.5	303.1	27.39	12.070			
6,200.0	6,174.2	6,185.8	6,175.2	15.7	13.9	89.37	180.5	-61.6	330.5	302.7	27.81	11.885			
6,300.0	6,274.2	6,285.8	6,275.2	15.9	14.2	89.37	180.5	-61.6	330.5	302.3	28.24	11.706			
6,400.0	6,374.2	6,385.8	6,375.2	16.0	14.4	89.37	180.5	-61.6	330.5	301.9	28.66	11.532			
6,500.0	6,474.2	6,485.8	6,475.2	16.2	14.6	89.37	180.5	-61.6	330.5	301.4	29.09	11.363			
6,600.0	6,574.2	6,585.8	6,575.2	16.4	14.8	89.37	180.5	-61.6	330.5	301.0	29.52	11.198			
6,700.0	6,674.2	6,685.8	6,675.2	16.6	15.0	89.37	180.5	-61.6	330.5	300.6	29.94	11.038			
6,748.3	6,722.4	6,734.1	6,723.4	16.7	15.1	-90.75	180.5	-61.6	330.5	300.4	30.15	10.963			
6,800.0	6,774.1	6,785.8	6,775.1	16.8	15.2	-90.78	180.5	-61.6	330.5	300.2	30.37	10.884			
6,900.0	6,872.8	6,884.4	6,873.8	16.9	15.5	-93.35	180.5	-61.6	331.1	300.3	30.78	10.757			
7,000.0	6,966.7	6,980.4	6,969.7	17.0	15.7	-98.48	180.1	-61.6	334.8	303.7	31.15	10.749			
7,100.0	7,052.3	7,087.6	7,075.7	17.1	15.8	-104.52	165.1	-61.6	343.2	312.0	31.24	10.987			
7,200.0	7,126.6	7,206.0	7,186.3	17.1	15.9	-110.14	123.8	-61.6	354.9	324.0	30.95	11.467			
7,300.0	7,186.9	7,337.5	7,294.8	17.2	16.0	-115.06	50.0	-61.6	367.9	337.5	30.41	12.099			
7,400.0	7,230.8	7,483.3	7,389.2	17.4	16.1	-118.93	-60.4	-61.6	379.6	349.6	30.02	12.645			
7,500.0	7,256.8	7,641.3	7,452.8	17.8	16.7	-121.32	-204.4	-61.6	387.4	357.0	30.39	12.746			
7,600.0	7,264.0	7,796.0	7,470.8	18.4	17.7	-121.91	-357.5	-61.6	389.3	357.5	31.88	12.211			
7,700.0	7,263.5	7,896.0	7,470.5	19.2	18.6	-121.92	-457.5	-61.6	389.4	356.0	33.43	11.649			
7,800.0	7,263.1	7,996.0	7,470.1	20.1	19.6	-121.94	-557.5	-61.6	389.5	354.3	35.22	11.058			
7,900.0	7,262.6	8,096.0	7,469.8	21.2	20.8	-121.95	-657.5	-61.6	389.5	352.3	37.22	10.465			
8,000.0	7,262.1	8,196.0	7,469.4	22.5	22.0	-121.97	-757.5	-61.6	389.6	350.2	39.41	9.886			
8,100.0	7,261.7	8,296.0	7,469.1	23.8	23.3	-121.99	-857.5	-61.6	389.7	347.9	41.75	9.334			
8,200.0	7,261.2	8,396.0	7,468.7	25.2	24.8	-122.00	-957.5	-61.6	389.7	345.5	44.21	8.815			
8,300.0	7,260.7	8,496.0	7,468.4	26.6	26.2	-122.02	-1,057.5	-61.6	389.8	343.0	46.78	8.332			
8,400.0	7,260.2	8,596.0	7,468.0	28.1	27.8	-122.03	-1,157.5	-61.6	389.9	340.4	49.45	7.884			
8,500.0	7,259.8	8,696.0	7,467.7	29.7	29.3	-122.05	-1,257.5	-61.6	389.9	337.7	52.19	7.472			
8,600.0	7,259.3	8,796.0	7,467.3	31.3	31.0	-122.06	-1,357.4	-61.6	390.0	335.0	54.99	7.092			
8,700.0	7,258.8	8,896.0	7,467.0	32.9	32.6	-122.08	-1,457.4	-61.6	390.1	332.2	57.85	6.742			
8,800.0	7,258.4	8,996.0	7,466.6	34.6	34.3	-122.09	-1,557.4	-61.6	390.1	329.4	60.76	6.421			
8,900.0	7,257.9	9,096.0	7,466.3	36.3	36.0	-122.11	-1,657.4	-61.6	390.2	326.5	63.71	6.125			
9,000.0	7,257.4	9,196.0	7,465.9	38.0	37.7	-122.12	-1,757.4	-61.6	390.2	323.6	66.69	5.852			
9,100.0	7,256.9	9,296.0	7,465.6	39.7	39.4	-122.14	-1,857.4	-61.6	390.3	320.6	69.70	5.600			
9,200.0	7,256.5	9,396.0	7,465.2	41.4	41.2	-122.15	-1,957.4	-61.6	390.4	317.6	72.74	5.367			
9,300.0	7,256.0	9,496.0	7,464.9	43.2	43.0	-122.17	-2,057.4	-61.6	390.4	314.6	75.80	5.151			
9,400.0	7,255.5	9,596.0	7,464.5	45.0	44.7	-122.18	-2,157.4	-61.6	390.5	311.6	78.89	4.950			
9,500.0	7,255.1	9,696.0	7,464.2	46.7	46.5	-122.20	-2,257.4	-61.6	390.6	308.6	81.99	4.764			
9,600.0	7,254.6	9,796.0	7,463.8	48.5	48.3	-122.21	-2,357.4	-61.6	390.6	305.5	85.11	4.590			
9,700.0	7,254.1	9,896.0	7,463.5	50.3	50.1	-122.23	-2,457.4	-61.6	390.7	302.5	88.24	4.428			
9,800.0	7,253.7	9,996.0	7,463.1	52.1	52.0	-122.24	-2,557.4	-61.6	390.8	299.4	91.38	4.276			
9,900.0	7,253.2	10,096.0	7,462.8	54.0	53.8	-122.26	-2,657.4	-61.6	390.8	296.3	94.54	4.134			
10,000.0	7,252.7	10,196.0	7,462.4	55.8	55.6	-122.27	-2,757.4	-61.6	390.9	293.2	97.70	4.001			
10,100.0	7,252.2	10,296.0	7,462.1	57.6	57.4	-122.29	-2,857.4	-61.6	391.0	290.1	100.88	3.876			
10,200.0	7,251.8	10,395.9	7,461.7	59.4	59.3	-122.30	-2,957.4	-61.6	391.0	287.0	104.06	3.758			

CC - Min centre to center distance or convergent point, SF - min separation factor, ES - min ellipse separation

<b>Company:</b>	Verdad Oil & Gas Corporation	<b>Local Co-ordinate Reference:</b>	Well Young 01N-65W-28-3N
<b>Project:</b>	SEC.28-T1N-R65W	<b>TVD Reference:</b>	WELL @ 5084.0ft (Original Well Elev)
<b>Reference Site:</b>	Young 01N-65W-28 Pad Sec.28-T1N-R65W	<b>MD Reference:</b>	WELL @ 5084.0ft (Original Well Elev)
<b>Site Error:</b>	0.0ft	<b>North Reference:</b>	True
<b>Reference Well:</b>	Young 01N-65W-28-3N	<b>Survey Calculation Method:</b>	Minimum Curvature
<b>Well Error:</b>	0.0ft	<b>Output errors are at</b>	2.00 sigma
<b>Reference Wellbore</b>	Wellbore #1	<b>Database:</b>	Landmark
<b>Reference Design:</b>	Plan #1 (8-29-14)	<b>Offset TVD Reference:</b>	Offset Datum

Offset Design													Offset Site Error:	0.0 ft	
Survey Program: 0-MWD													Offset Well Error:		0.0 ft
Reference		Offset		Semi Major Axis			Distance						Warning		
Measured Depth (ft)	Vertical Depth (ft)	Measured Depth (ft)	Vertical Depth (ft)	Reference (ft)	Offset (ft)	Highside Toolface (°)	Offset Wellbore Centre +N/-S (ft)	+E/-W (ft)	Between Centres (ft)	Between Ellipses (ft)	Minimum Separation (ft)	Separation Factor			
10,300.0	7,251.3	10,495.9	7,461.4	61.3	61.1	-122.32	-3,057.4	-61.6	391.1	283.8	107.25	3.647			
10,400.0	7,250.8	10,595.9	7,461.0	63.1	63.0	-122.33	-3,157.4	-61.6	391.2	280.7	110.45	3.542			
10,500.0	7,250.4	10,695.9	7,460.7	65.0	64.8	-122.35	-3,257.4	-61.6	391.2	277.6	113.65	3.442			
10,600.0	7,249.9	10,795.9	7,460.3	66.8	66.7	-122.36	-3,357.4	-61.6	391.3	274.4	116.86	3.348			
10,700.0	7,249.4	10,895.9	7,460.0	68.7	68.5	-122.38	-3,457.4	-61.6	391.4	271.3	120.07	3.259			
10,800.0	7,248.9	10,995.9	7,459.6	70.5	70.4	-122.39	-3,557.4	-61.6	391.4	268.1	123.29	3.175			
10,900.0	7,248.5	11,095.9	7,459.3	72.4	72.3	-122.41	-3,657.4	-61.6	391.5	265.0	126.51	3.094			
11,000.0	7,248.0	11,195.9	7,458.9	74.3	74.1	-122.43	-3,757.4	-61.6	391.6	261.8	129.74	3.018			
11,100.0	7,247.5	11,295.9	7,458.6	76.1	76.0	-122.44	-3,857.4	-61.6	391.6	258.7	132.97	2.945			
11,200.0	7,247.1	11,395.9	7,458.2	78.0	77.9	-122.46	-3,957.4	-61.6	391.7	255.5	136.20	2.876			
11,300.0	7,246.6	11,495.9	7,457.9	79.9	79.8	-122.47	-4,057.4	-61.6	391.8	252.3	139.43	2.810			
11,400.0	7,246.1	11,595.9	7,457.5	81.7	81.6	-122.49	-4,157.4	-61.6	391.8	249.1	142.67	2.746			
11,500.0	7,245.6	11,695.9	7,457.2	83.6	83.5	-122.50	-4,257.4	-61.6	391.9	246.0	145.91	2.686			
11,600.0	7,245.2	11,795.9	7,456.9	85.5	85.4	-122.52	-4,357.4	-61.6	391.9	242.8	149.15	2.628			
11,700.0	7,244.7	11,895.9	7,456.5	87.4	87.3	-122.53	-4,457.4	-61.6	392.0	239.6	152.39	2.572			
11,800.0	7,244.2	11,995.9	7,456.2	89.3	89.2	-122.55	-4,557.4	-61.6	392.1	236.4	155.63	2.519			
11,823.4	7,244.1	12,019.4	7,456.1	89.7	89.6	-122.55	-4,580.9	-61.6	392.1	235.7	156.39	2.507			
11,848.6	7,244.0	12,039.5	7,456.0	90.2	90.0	-122.55	-4,600.9	-61.6	392.1	235.0	157.13	2.496 SF			

<b>Company:</b>	Verdad Oil & Gas Corporation	<b>Local Co-ordinate Reference:</b>	Well Young 01N-65W-28-3N
<b>Project:</b>	SEC.28-T1N-R65W	<b>TVD Reference:</b>	WELL @ 5084.0ft (Original Well Elev)
<b>Reference Site:</b>	Young 01N-65W-28 Pad Sec.28-T1N-R65W	<b>MD Reference:</b>	WELL @ 5084.0ft (Original Well Elev)
<b>Site Error:</b>	0.0ft	<b>North Reference:</b>	True
<b>Reference Well:</b>	Young 01N-65W-28-3N	<b>Survey Calculation Method:</b>	Minimum Curvature
<b>Well Error:</b>	0.0ft	<b>Output errors are at</b>	2.00 sigma
<b>Reference Wellbore</b>	Wellbore #1	<b>Database:</b>	Landmark
<b>Reference Design:</b>	Plan #1 (8-29-14)	<b>Offset TVD Reference:</b>	Offset Datum

Offset Design													Offset Site Error:	0.0ft	
Survey Program: 0-MWD													Offset Well Error:		0.0ft
Reference				Offset		Semi Major Axis			Distance				Warning		
Measured Depth (ft)	Vertical Depth (ft)	Measured Depth (ft)	Vertical Depth (ft)	Reference (ft)	Offset (ft)	Highside Toolface (°)	Offset Wellbore Centre +N/-S (ft)	+E/-W (ft)	Between Centres (ft)	Between Ellipses (ft)	Minimum Separation (ft)	Separation Factor			
0.0	0.0	1.0	1.0	0.0	0.0	89.98	0.0	47.6	47.6	47.6	0.00	N/A			
100.0	100.0	101.0	101.0	0.1	0.1	89.98	0.0	47.6	47.6	47.4	0.23	209.713			
200.0	200.0	201.0	201.0	0.3	0.3	89.98	0.0	47.6	47.6	46.9	0.68	70.369			
300.0	300.0	301.0	301.0	0.6	0.6	89.98	0.0	47.6	47.6	46.5	1.13	42.277			
400.0	400.0	401.0	401.0	0.8	0.8	89.98	0.0	47.6	47.6	46.0	1.58	30.215			
500.0	500.0	501.0	501.0	1.0	1.0	89.98	0.0	47.6	47.6	45.6	2.03	23.508			
600.0	600.0	601.0	601.0	1.2	1.2	89.98	0.0	47.6	47.6	45.1	2.47	19.238			
700.0	700.0	701.0	701.0	1.5	1.5	89.98	0.0	47.6	47.6	44.7	2.92	16.281			
800.0	800.0	801.0	801.0	1.7	1.7	89.98	0.0	47.6	47.6	44.2	3.37	14.111			
900.0	900.0	901.0	901.0	1.9	1.9	89.98	0.0	47.6	47.6	43.8	3.82	12.452			
1,000.0	1,000.0	1,001.0	1,001.0	2.1	2.1	89.98	0.0	47.6	47.6	43.3	4.27	11.142	CC, ES		
1,100.0	1,100.0	1,101.0	1,101.0	2.4	2.4	156.53	0.0	47.6	49.2	44.5	4.71	10.439			
1,200.0	1,199.8	1,200.8	1,200.8	2.6	2.6	158.70	0.0	47.6	54.0	48.9	5.14	10.505			
1,300.0	1,299.5	1,300.5	1,300.5	2.8	2.8	161.56	0.0	47.6	62.2	56.7	5.57	11.168			
1,400.0	1,398.7	1,399.7	1,399.7	3.0	3.0	164.45	0.0	47.6	73.6	67.6	6.01	12.254			
1,500.0	1,498.0	1,499.0	1,499.0	3.3	3.3	166.67	0.0	47.6	85.6	79.2	6.45	13.280			
1,600.0	1,597.2	1,598.2	1,598.2	3.6	3.5	168.35	0.0	47.6	97.7	90.8	6.89	14.181			
1,700.0	1,696.4	1,697.4	1,697.4	3.9	3.7	169.65	0.0	47.6	109.9	102.5	7.34	14.978			
1,800.0	1,795.7	1,796.7	1,796.7	4.1	3.9	170.70	0.0	47.6	122.1	114.3	7.78	15.685			
1,900.0	1,894.9	1,895.9	1,895.9	4.4	4.1	171.55	0.0	47.6	134.4	126.1	8.23	16.316			
2,000.0	1,994.1	1,995.1	1,995.1	4.7	4.4	172.26	0.0	47.6	146.6	137.9	8.69	16.882			
2,100.0	2,093.3	2,094.3	2,094.3	5.0	4.6	172.87	0.0	47.6	158.9	149.8	9.14	17.392			
2,200.0	2,192.6	2,193.6	2,193.6	5.3	4.8	173.38	0.0	47.6	171.2	161.6	9.59	17.853			
2,300.0	2,291.8	2,292.8	2,292.8	5.6	5.0	173.83	0.0	47.6	183.6	173.5	10.05	18.272			
2,400.0	2,391.0	2,392.0	2,392.0	5.9	5.3	174.22	0.0	47.6	195.9	185.4	10.50	18.654			
2,500.0	2,490.3	2,491.3	2,491.3	6.2	5.5	174.56	0.0	47.6	208.2	197.3	10.96	19.005			
2,600.0	2,589.5	2,592.7	2,592.7	6.6	5.7	174.50	1.5	47.6	220.1	208.7	11.42	19.280			
2,700.0	2,688.7	2,694.4	2,694.3	6.9	5.9	173.59	6.6	47.7	231.0	219.1	11.88	19.444			
2,800.0	2,787.9	2,796.1	2,795.5	7.2	6.2	171.94	15.3	47.9	240.9	228.5	12.34	19.515			
2,900.0	2,887.2	2,896.5	2,895.3	7.5	6.4	169.71	27.1	48.1	250.2	237.4	12.82	19.522			
3,000.0	2,986.4	2,995.6	2,993.6	7.8	6.6	167.54	39.4	48.3	259.8	246.5	13.30	19.530			
3,100.0	3,085.6	3,094.6	3,091.9	8.1	6.9	165.53	51.7	48.5	269.7	255.9	13.80	19.548			
3,200.0	3,184.9	3,193.7	3,190.2	8.4	7.1	163.65	64.0	48.7	280.0	265.6	14.30	19.572			
3,300.0	3,284.1	3,292.8	3,288.5	8.7	7.4	161.91	76.3	48.9	290.5	275.6	14.82	19.602			
3,400.0	3,383.3	3,391.8	3,386.8	9.1	7.6	160.30	88.6	49.1	301.2	285.9	15.34	19.635			
3,500.0	3,482.5	3,490.9	3,485.1	9.4	7.9	158.79	100.9	49.3	312.2	296.3	15.87	19.670			
3,600.0	3,581.8	3,590.0	3,583.4	9.7	8.2	157.39	113.2	49.5	323.4	307.0	16.41	19.708			
3,700.0	3,681.0	3,689.1	3,681.7	10.0	8.4	156.08	125.5	49.7	334.7	317.8	16.95	19.747			
3,800.0	3,780.2	3,788.1	3,780.0	10.3	8.7	154.86	137.8	49.9	346.2	328.7	17.50	19.788			
3,900.0	3,879.5	3,887.2	3,878.3	10.7	9.0	153.71	150.1	50.1	357.9	339.8	18.05	19.828			
4,000.0	3,978.7	3,986.5	3,976.9	11.0	9.2	152.66	162.2	50.3	369.7	351.1	18.60	19.880			
4,100.0	4,077.9	4,086.7	4,076.6	11.3	9.4	152.08	171.8	50.5	381.4	362.3	19.08	19.987			
4,200.0	4,177.1	4,187.1	4,176.8	11.6	9.6	152.05	177.9	50.6	392.8	373.3	19.53	20.110			
4,300.0	4,276.4	4,287.5	4,277.2	11.9	9.8	152.52	180.4	50.6	404.0	384.0	19.95	20.246			
4,400.0	4,375.6	4,386.9	4,376.6	12.2	10.0	153.30	180.5	50.6	415.0	394.7	20.37	20.376			
4,500.0	4,474.9	4,486.2	4,475.9	12.6	10.2	154.06	180.5	50.6	426.0	405.2	20.81	20.473			
4,600.0	4,574.4	4,585.7	4,575.4	12.8	10.4	154.69	180.5	50.6	437.7	415.5	21.22	20.481			
4,700.0	4,674.2	4,685.5	4,675.2	13.0	10.6	155.08	180.5	50.6	449.2	426.0	21.62	20.364			
4,800.0	4,774.2	4,785.5	4,775.2	13.1	10.9	155.24	180.5	50.6	460.7	436.7	21.99	20.127			
4,900.0	4,874.2	4,885.5	4,875.2	13.3	11.1	89.53	180.5	50.6	472.2	447.4	22.38	19.781			
5,000.0	4,974.2	4,985.5	4,975.2	13.5	11.3	89.53	180.5	50.6	483.7	458.1	22.80	19.423			
5,100.0	5,074.2	5,085.5	5,075.2	13.6	11.5	89.53	180.5	50.6	495.2	468.8	23.21	19.076			

CC - Min centre to center distance or convergent point, SF - min separation factor, ES - min ellipse separation

<b>Company:</b>	Verdad Oil & Gas Corporation	<b>Local Co-ordinate Reference:</b>	Well Young 01N-65W-28-3N
<b>Project:</b>	SEC.28-T1N-R65W	<b>TVD Reference:</b>	WELL @ 5084.0ft (Original Well Elev)
<b>Reference Site:</b>	Young 01N-65W-28 Pad Sec.28-T1N-R65W	<b>MD Reference:</b>	WELL @ 5084.0ft (Original Well Elev)
<b>Site Error:</b>	0.0ft	<b>North Reference:</b>	True
<b>Reference Well:</b>	Young 01N-65W-28-3N	<b>Survey Calculation Method:</b>	Minimum Curvature
<b>Well Error:</b>	0.0ft	<b>Output errors are at</b>	2.00 sigma
<b>Reference Wellbore</b>	Wellbore #1	<b>Database:</b>	Landmark
<b>Reference Design:</b>	Plan #1 (8-29-14)	<b>Offset TVD Reference:</b>	Offset Datum

Offset Design													Offset Site Error:	0.0 ft	
Survey Program: 0-MWD													Offset Well Error:		0.0 ft
Reference		Offset		Semi Major Axis			Distance						Warning		
Measured Depth (ft)	Vertical Depth (ft)	Measured Depth (ft)	Vertical Depth (ft)	Reference (ft)	Offset (ft)	Highside Toolface (°)	Offset Wellbore Centre +N/-S (ft)	+E/-W (ft)	Between Centres (ft)	Between Ellipses (ft)	Minimum Separation (ft)	Separation Factor			
5,200.0	5,174.2	5,185.5	5,175.2	13.8	11.7	89.53	180.5	50.6	442.8	419.1	23.63	18.740			
5,300.0	5,274.2	5,285.5	5,275.2	14.0	11.9	89.53	180.5	50.6	442.8	418.7	24.04	18.415			
5,400.0	5,374.2	5,385.5	5,375.2	14.2	12.1	89.53	180.5	50.6	442.8	418.3	24.46	18.100			
5,500.0	5,474.2	5,485.5	5,475.2	14.4	12.4	89.53	180.5	50.6	442.8	417.9	24.88	17.795			
5,600.0	5,574.2	5,585.5	5,575.2	14.5	12.6	89.53	180.5	50.6	442.8	417.5	25.30	17.499			
5,700.0	5,674.2	5,685.5	5,675.2	14.7	12.8	89.53	180.5	50.6	442.8	417.0	25.72	17.213			
5,800.0	5,774.2	5,785.5	5,775.2	14.9	13.0	89.53	180.5	50.6	442.8	416.6	26.14	16.935			
5,900.0	5,874.2	5,885.5	5,875.2	15.1	13.2	89.53	180.5	50.6	442.8	416.2	26.57	16.665			
6,000.0	5,974.2	5,985.5	5,975.2	15.3	13.4	89.53	180.5	50.6	442.8	415.8	26.99	16.403			
6,100.0	6,074.2	6,085.5	6,075.2	15.5	13.7	89.53	180.5	50.6	442.8	415.3	27.42	16.149			
6,200.0	6,174.2	6,185.5	6,175.2	15.7	13.9	89.53	180.5	50.6	442.8	414.9	27.84	15.902			
6,300.0	6,274.2	6,285.5	6,275.2	15.9	14.1	89.53	180.5	50.6	442.8	414.5	28.27	15.662			
6,400.0	6,374.2	6,385.5	6,375.2	16.0	14.3	89.53	180.5	50.6	442.8	414.1	28.70	15.429			
6,500.0	6,474.2	6,485.5	6,475.2	16.2	14.5	89.53	180.5	50.6	442.8	413.6	29.12	15.203			
6,600.0	6,574.2	6,585.5	6,575.2	16.4	14.7	89.53	180.5	50.6	442.8	413.2	29.55	14.982			
6,700.0	6,674.2	6,685.5	6,675.2	16.6	15.0	89.53	180.5	50.6	442.8	412.8	29.98	14.768			
6,746.2	6,720.3	6,731.6	6,721.3	16.7	15.1	-90.55	180.5	50.6	442.8	412.6	30.18	14.672			
6,800.0	6,774.1	6,785.4	6,775.1	16.8	15.2	-90.47	179.6	50.6	442.8	412.4	30.39	14.570			
6,900.0	6,872.8	6,885.2	6,873.5	16.9	15.3	-90.45	164.2	50.8	442.9	412.3	30.62	14.464			
7,000.0	6,966.7	6,984.9	6,967.2	17.0	15.4	-90.42	130.4	51.2	443.3	412.6	30.75	14.416			
7,100.0	7,052.3	7,084.7	7,052.7	17.1	15.4	-90.38	79.3	51.7	443.9	413.0	30.86	14.386			
7,200.0	7,126.6	7,184.5	7,127.0	17.1	15.5	-90.32	12.9	52.5	444.6	413.6	31.05	14.320			
7,300.0	7,186.9	7,284.4	7,187.3	17.2	15.7	-90.24	-66.5	53.3	445.5	414.1	31.45	14.164			
7,400.0	7,230.8	7,384.2	7,231.3	17.4	16.1	-90.16	-156.0	54.3	446.5	414.3	32.17	13.881			
7,500.0	7,256.8	7,484.2	7,257.6	17.8	16.6	-90.08	-252.2	55.4	447.6	414.3	33.24	13.464			
7,600.0	7,264.0	7,584.1	7,265.0	18.4	17.3	-90.00	-351.8	56.5	448.7	414.0	34.66	12.945			
7,700.0	7,263.5	7,684.1	7,264.6	19.2	18.2	-90.00	-451.8	57.6	449.8	413.4	36.43	12.348			
7,800.0	7,263.1	7,784.1	7,264.1	20.1	19.2	-90.00	-551.7	58.7	450.9	412.4	38.48	11.716			
7,900.0	7,262.6	7,884.1	7,263.6	21.2	20.4	-90.00	-651.7	59.8	452.0	411.2	40.80	11.079			
8,000.0	7,262.1	7,984.1	7,263.1	22.5	21.6	-90.00	-751.7	60.9	453.1	409.8	43.33	10.457			
8,100.0	7,261.7	8,084.1	7,262.7	23.8	23.0	-90.00	-851.7	62.1	454.2	408.2	46.04	9.865			
8,200.0	7,261.2	8,184.1	7,262.2	25.2	24.4	-90.00	-951.7	63.2	455.3	406.4	48.91	9.310			
8,300.0	7,260.7	8,284.1	7,261.7	26.6	25.9	-90.00	-1,051.7	64.3	456.4	404.5	51.89	8.796			
8,400.0	7,260.2	8,384.1	7,261.3	28.1	27.5	-90.00	-1,151.7	65.4	457.5	402.6	54.99	8.321			
8,500.0	7,259.8	8,484.1	7,260.8	29.7	29.1	-90.00	-1,251.6	66.5	458.7	400.5	58.17	7.885			
8,600.0	7,259.3	8,584.1	7,260.3	31.3	30.7	-90.00	-1,351.6	67.6	459.8	398.3	61.43	7.485			
8,700.0	7,258.8	8,684.1	7,259.8	32.9	32.4	-90.00	-1,451.6	68.7	460.9	396.1	64.75	7.118			
8,800.0	7,258.4	8,784.1	7,259.4	34.6	34.1	-90.00	-1,551.6	69.8	462.0	393.9	68.12	6.782			
8,900.0	7,257.9	8,884.1	7,258.9	36.3	35.8	-90.00	-1,651.6	70.9	463.1	391.5	71.54	6.473			
9,000.0	7,257.4	8,984.1	7,258.4	38.0	37.5	-90.00	-1,751.6	72.0	464.2	389.2	75.00	6.189			
9,100.0	7,256.9	9,084.1	7,258.0	39.7	39.3	-90.00	-1,851.6	73.1	465.3	386.8	78.50	5.928			
9,200.0	7,256.5	9,184.1	7,257.5	41.4	41.0	-90.00	-1,951.5	74.2	466.4	384.4	82.02	5.686			
9,300.0	7,256.0	9,284.0	7,257.0	43.2	42.8	-90.00	-2,051.5	75.4	467.5	381.9	85.57	5.463			
9,400.0	7,255.5	9,384.0	7,256.5	45.0	44.6	-90.00	-2,151.5	76.5	468.6	379.5	89.15	5.257			
9,500.0	7,255.1	9,484.0	7,256.1	46.7	46.4	-90.00	-2,251.5	77.6	469.7	377.0	92.75	5.065			
9,600.0	7,254.6	9,584.0	7,255.6	48.5	48.2	-90.00	-2,351.5	78.7	470.8	374.5	96.36	4.886			
9,700.0	7,254.1	9,684.0	7,255.1	50.3	50.0	-90.00	-2,451.5	79.8	472.0	372.0	99.99	4.720			
9,800.0	7,253.7	9,784.0	7,254.7	52.1	51.8	-90.00	-2,551.5	80.9	473.1	369.4	103.64	4.565			
9,900.0	7,253.2	9,884.0	7,254.2	54.0	53.7	-90.00	-2,651.5	82.0	474.2	366.9	107.30	4.419			
10,000.0	7,252.7	9,984.0	7,253.7	55.8	55.5	-90.00	-2,751.4	83.1	475.3	364.3	110.97	4.283			
10,100.0	7,252.2	10,084.0	7,253.2	57.6	57.4	-90.00	-2,851.4	84.2	476.4	361.7	114.65	4.155			
10,200.0	7,251.8	10,184.0	7,252.8	59.4	59.2	-90.00	-2,951.4	85.3	477.5	359.2	118.34	4.035			

CC - Min centre to center distance or convergent point, SF - min separation factor, ES - min ellipse separation

<b>Company:</b>	Verdad Oil & Gas Corporation	<b>Local Co-ordinate Reference:</b>	Well Young 01N-65W-28-3N
<b>Project:</b>	SEC.28-T1N-R65W	<b>TVD Reference:</b>	WELL @ 5084.0ft (Original Well Elev)
<b>Reference Site:</b>	Young 01N-65W-28 Pad Sec.28-T1N-R65W	<b>MD Reference:</b>	WELL @ 5084.0ft (Original Well Elev)
<b>Site Error:</b>	0.0ft	<b>North Reference:</b>	True
<b>Reference Well:</b>	Young 01N-65W-28-3N	<b>Survey Calculation Method:</b>	Minimum Curvature
<b>Well Error:</b>	0.0ft	<b>Output errors are at</b>	2.00 sigma
<b>Reference Wellbore</b>	Wellbore #1	<b>Database:</b>	Landmark
<b>Reference Design:</b>	Plan #1 (8-29-14)	<b>Offset TVD Reference:</b>	Offset Datum

Offset Design													Offset Site Error:	0.0 ft	
Survey Program: 0-MWD													Offset Well Error:		0.0 ft
Reference		Offset		Semi Major Axis			Distance						Warning		
Measured Depth (ft)	Vertical Depth (ft)	Measured Depth (ft)	Vertical Depth (ft)	Reference (ft)	Offset (ft)	Highside Toolface (°)	Offset Wellbore Centre +N/-S (ft)	+E/-W (ft)	Between Centres (ft)	Between Ellipses (ft)	Minimum Separation (ft)	Separation Factor			
10,300.0	7,251.3	10,284.0	7,252.3	61.3	61.1	-90.00	-3,051.4	86.4	478.6	356.6	122.04	3.922			
10,400.0	7,250.8	10,384.0	7,251.8	63.1	62.9	-90.00	-3,151.4	87.6	479.7	354.0	125.75	3.815			
10,500.0	7,250.4	10,484.0	7,251.4	65.0	64.8	-90.00	-3,251.4	88.7	480.8	351.4	129.46	3.714			
10,600.0	7,249.9	10,584.0	7,250.9	66.8	66.6	-90.00	-3,351.4	89.8	481.9	348.8	133.19	3.619			
10,700.0	7,249.4	10,684.0	7,250.4	68.7	68.5	-90.00	-3,451.3	90.9	483.0	346.1	136.91	3.528			
10,800.0	7,248.9	10,784.0	7,249.9	70.5	70.4	-90.00	-3,551.3	92.0	484.2	343.5	140.65	3.442			
10,900.0	7,248.5	10,883.9	7,249.5	72.4	72.2	-90.00	-3,651.3	93.1	485.3	340.9	144.39	3.361			
11,000.0	7,248.0	10,983.9	7,249.0	74.3	74.1	-90.00	-3,751.3	94.2	486.4	338.2	148.13	3.283			
11,100.0	7,247.5	11,083.9	7,248.5	76.1	76.0	-90.00	-3,851.3	95.3	487.5	335.6	151.88	3.210			
11,200.0	7,247.1	11,183.9	7,248.1	78.0	77.9	-90.00	-3,951.3	96.4	488.6	333.0	155.63	3.139			
11,300.0	7,246.6	11,283.9	7,247.6	79.9	79.8	-90.00	-4,051.3	97.5	489.7	330.3	159.39	3.072			
11,400.0	7,246.1	11,383.9	7,247.1	81.7	81.6	-90.00	-4,151.3	98.6	490.8	327.7	163.15	3.008			
11,500.0	7,245.6	11,483.9	7,246.6	83.6	83.5	-90.00	-4,251.2	99.7	491.9	325.0	166.91	2.947			
11,600.0	7,245.2	11,583.9	7,246.2	85.5	85.4	-90.00	-4,351.2	100.9	493.0	322.3	170.68	2.889			
11,700.0	7,244.7	11,683.9	7,245.7	87.4	87.3	-90.00	-4,451.2	102.0	494.1	319.7	174.45	2.832			
11,800.0	7,244.2	11,783.9	7,245.2	89.3	89.2	-90.00	-4,551.2	103.1	495.2	317.0	178.22	2.779			
11,848.6	7,244.0	11,832.5	7,245.0	90.2	90.1	-90.00	-4,599.8	103.6	495.8	315.7	180.06	2.753 SF			

<b>Company:</b>	Verdad Oil & Gas Corporation	<b>Local Co-ordinate Reference:</b>	Well Young 01N-65W-28-3N
<b>Project:</b>	SEC.28-T1N-R65W	<b>TVD Reference:</b>	WELL @ 5084.0ft (Original Well Elev)
<b>Reference Site:</b>	Young 01N-65W-28 Pad Sec.28-T1N-R65W	<b>MD Reference:</b>	WELL @ 5084.0ft (Original Well Elev)
<b>Site Error:</b>	0.0ft	<b>North Reference:</b>	True
<b>Reference Well:</b>	Young 01N-65W-28-3N	<b>Survey Calculation Method:</b>	Minimum Curvature
<b>Well Error:</b>	0.0ft	<b>Output errors are at</b>	2.00 sigma
<b>Reference Wellbore</b>	Wellbore #1	<b>Database:</b>	Landmark
<b>Reference Design:</b>	Plan #1 (8-29-14)	<b>Offset TVD Reference:</b>	Offset Datum

Offset Design													Offset Site Error:	0.0 ft	
Survey Program: 0-MWD													Offset Well Error:		0.0 ft
Reference				Offset			Semi Major Axis			Distance				Warning	
Measured Depth (ft)	Vertical Depth (ft)	Measured Depth (ft)	Vertical Depth (ft)	Reference (ft)	Offset (ft)	Highside Toolface (°)	Offset Wellbore Centre +N/-S (ft)	+E/-W (ft)	Between Centres (ft)	Between Ellipses (ft)	Minimum Separation (ft)	Separation Factor			
0.0	0.0	2.0	2.0	0.0	0.0	89.99	0.0	61.6	61.6	61.6	0.00	N/A			
100.0	100.0	102.0	102.0	0.1	0.1	89.99	0.0	61.6	61.6	61.4	0.23	268.732			
200.0	200.0	202.0	202.0	0.3	0.3	89.99	0.0	61.6	61.6	60.9	0.68	90.764			
300.0	300.0	302.0	302.0	0.6	0.6	89.99	0.0	61.6	61.6	60.5	1.13	54.603			
400.0	400.0	402.0	402.0	0.8	0.8	89.99	0.0	61.6	61.6	60.0	1.58	39.047			
500.0	500.0	502.0	502.0	1.0	1.0	89.99	0.0	61.6	61.6	59.6	2.03	30.389			
600.0	600.0	602.0	602.0	1.2	1.2	89.99	0.0	61.6	61.6	59.1	2.48	24.874			
700.0	700.0	702.0	702.0	1.5	1.5	89.99	0.0	61.6	61.6	58.7	2.93	21.053			
800.0	800.0	802.0	802.0	1.7	1.7	89.99	0.0	61.6	61.6	58.2	3.38	18.249			
900.0	900.0	902.0	902.0	1.9	1.9	89.99	0.0	61.6	61.6	57.8	3.83	16.105			
1,000.0	1,000.0	1,002.0	1,002.0	2.1	2.1	89.99	0.0	61.6	61.6	57.3	4.28	14.412 CC, ES			
1,100.0	1,100.0	1,102.0	1,102.0	2.4	2.4	156.35	0.0	61.6	63.2	58.5	4.72	13.403			
1,200.0	1,199.8	1,201.8	1,201.8	2.6	2.6	158.08	0.0	61.6	68.0	62.9	5.15	13.218			
1,300.0	1,299.5	1,301.5	1,301.5	2.8	2.8	160.47	0.0	61.6	76.2	70.6	5.58	13.663			
1,400.0	1,398.7	1,400.0	1,400.0	3.0	3.0	163.01	0.0	61.6	87.5	81.5	6.01	14.560			
1,500.0	1,498.0	1,497.8	1,497.8	3.3	3.3	164.33	1.1	62.9	100.5	94.0	6.44	15.597			
1,600.0	1,597.2	1,594.3	1,594.1	3.6	3.5	164.07	4.3	66.6	115.7	108.8	6.88	16.821			
1,700.0	1,696.4	1,690.0	1,689.5	3.9	3.7	162.80	9.6	72.7	133.1	125.7	7.32	18.184			
1,800.0	1,795.7	1,786.1	1,784.9	4.1	3.9	160.98	16.9	81.0	152.6	144.8	7.77	19.636			
1,900.0	1,894.9	1,883.9	1,882.1	4.4	4.1	159.40	24.7	90.0	172.6	164.4	8.23	20.977			
2,000.0	1,994.1	1,981.8	1,979.2	4.7	4.4	158.15	32.5	98.9	192.8	184.1	8.69	22.171			
2,100.0	2,093.3	2,079.7	2,076.4	5.0	4.7	157.13	40.3	107.8	213.0	203.8	9.17	23.236			
2,200.0	2,192.6	2,177.5	2,173.5	5.3	4.9	156.30	48.1	116.8	233.3	223.6	9.64	24.189			
2,300.0	2,291.8	2,275.4	2,270.7	5.6	5.2	155.59	55.8	125.7	253.6	243.5	10.12	25.048			
2,400.0	2,391.0	2,373.3	2,367.8	5.9	5.5	154.99	63.6	134.7	273.9	263.3	10.61	25.822			
2,500.0	2,490.3	2,471.1	2,465.0	6.2	5.7	154.48	71.4	143.6	294.3	283.2	11.10	26.524			
2,600.0	2,589.5	2,569.0	2,562.1	6.6	6.0	154.03	79.2	152.6	314.7	303.1	11.59	27.162			
2,700.0	2,688.7	2,666.9	2,659.3	6.9	6.3	153.63	87.0	161.5	335.1	323.0	12.08	27.744			
2,800.0	2,787.9	2,764.8	2,756.4	7.2	6.6	153.28	94.8	170.4	355.5	343.0	12.57	28.277			
2,900.0	2,887.2	2,862.6	2,853.6	7.5	6.9	152.97	102.6	179.4	376.0	362.9	13.07	28.766			
3,000.0	2,986.4	2,960.5	2,950.7	7.8	7.2	152.69	110.4	188.3	396.4	382.8	13.57	29.217			
3,100.0	3,085.6	3,058.4	3,047.9	8.1	7.5	152.44	118.1	197.3	416.9	402.8	14.07	29.633			
3,200.0	3,184.9	3,156.2	3,145.0	8.4	7.7	152.21	125.9	206.2	437.3	422.8	14.57	30.018			
3,300.0	3,284.1	3,254.1	3,242.2	8.7	8.0	152.00	133.7	215.2	457.8	442.7	15.07	30.376			
3,400.0	3,383.3	3,352.0	3,339.3	9.1	8.3	151.81	141.5	224.1	478.3	462.7	15.57	30.709			
3,500.0	3,482.5	3,449.9	3,436.5	9.4	8.6	151.63	149.3	233.0	498.7	482.7	16.08	31.020			
3,600.0	3,581.8	3,547.7	3,533.6	9.7	8.9	151.47	157.1	242.0	519.2	502.6	16.58	31.310			
3,700.0	3,681.0	3,645.6	3,630.8	10.0	9.2	151.33	164.9	250.9	539.7	522.6	17.09	31.582			
3,800.0	3,780.2	3,757.5	3,742.0	10.3	9.5	151.26	172.9	260.1	559.2	541.6	17.59	31.795			
3,900.0	3,879.5	3,874.6	3,858.8	10.7	9.7	151.47	178.2	266.3	575.7	557.6	18.07	31.863			
4,000.0	3,978.7	3,992.8	3,976.9	11.0	10.0	151.95	180.5	268.8	588.9	570.3	18.53	31.782			
4,100.0	4,077.9	4,095.8	4,079.9	11.3	10.1	152.52	180.5	268.9	599.9	581.0	18.97	31.631			
4,200.0	4,177.1	4,195.0	4,179.1	11.6	10.3	153.06	180.5	268.9	611.0	591.5	19.42	31.464			
4,300.0	4,276.4	4,294.2	4,278.4	11.9	10.5	153.58	180.5	268.9	622.1	602.2	19.87	31.307			
4,400.0	4,375.6	4,393.5	4,377.6	12.2	10.7	154.07	180.5	268.9	633.2	612.9	20.32	31.159			
4,500.0	4,474.9	4,492.7	4,476.9	12.6	10.9	154.58	180.5	268.9	644.2	623.5	20.78	31.003			
4,600.0	4,574.4	4,592.2	4,576.4	12.8	11.1	155.01	180.5	268.9	652.9	631.7	21.22	30.775			
4,700.0	4,674.2	4,692.0	4,676.2	13.0	11.3	155.28	180.5	268.9	658.5	636.9	21.63	30.447			
4,800.0	4,774.2	4,792.0	4,776.2	13.1	11.5	155.40	180.5	268.9	660.9	638.9	22.01	30.024			
4,900.0	4,874.2	4,892.0	4,876.2	13.3	11.7	89.69	180.5	268.9	661.0	638.6	22.40	29.507			
5,000.0	4,974.2	4,992.0	4,976.2	13.5	11.9	89.69	180.5	268.9	661.0	638.2	22.81	28.978			
5,100.0	5,074.2	5,092.0	5,076.2	13.6	12.1	89.69	180.5	268.9	661.0	637.8	23.22	28.466			

CC - Min centre to center distance or convergent point, SF - min separation factor, ES - min ellipse separation

<b>Company:</b>	Verdad Oil & Gas Corporation	<b>Local Co-ordinate Reference:</b>	Well Young 01N-65W-28-3N
<b>Project:</b>	SEC.28-T1N-R65W	<b>TVD Reference:</b>	WELL @ 5084.0ft (Original Well Elev)
<b>Reference Site:</b>	Young 01N-65W-28 Pad Sec.28-T1N-R65W	<b>MD Reference:</b>	WELL @ 5084.0ft (Original Well Elev)
<b>Site Error:</b>	0.0ft	<b>North Reference:</b>	True
<b>Reference Well:</b>	Young 01N-65W-28-3N	<b>Survey Calculation Method:</b>	Minimum Curvature
<b>Well Error:</b>	0.0ft	<b>Output errors are at</b>	2.00 sigma
<b>Reference Wellbore</b>	Wellbore #1	<b>Database:</b>	Landmark
<b>Reference Design:</b>	Plan #1 (8-29-14)	<b>Offset TVD Reference:</b>	Offset Datum

Offset Design													Offset Site Error:	0.0 ft	
Survey Program: 0-MWD													Offset Well Error:		0.0 ft
Reference		Offset		Semi Major Axis			Distance						Warning		
Measured Depth (ft)	Vertical Depth (ft)	Measured Depth (ft)	Vertical Depth (ft)	Reference (ft)	Offset (ft)	Highside Toolface (°)	Offset Wellbore Centre +N/-S (ft)	+E/-W (ft)	Between Centres (ft)	Between Ellipses (ft)	Minimum Separation (ft)	Separation Factor			
5,200.0	5,174.2	5,192.0	5,176.2	13.8	12.3	89.69	180.5	268.9	661.0	637.4	23.63	27.970			
5,300.0	5,274.2	5,292.0	5,276.2	14.0	12.5	89.69	180.5	268.9	661.0	637.0	24.05	27.489			
5,400.0	5,374.2	5,392.0	5,376.2	14.2	12.7	89.69	180.5	268.9	661.0	636.6	24.46	27.023			
5,500.0	5,474.2	5,492.0	5,476.2	14.4	12.9	89.69	180.5	268.9	661.0	636.1	24.88	26.571			
5,600.0	5,574.2	5,592.0	5,576.2	14.5	13.1	89.69	180.5	268.9	661.0	635.7	25.29	26.133			
5,700.0	5,674.2	5,692.0	5,676.2	14.7	13.3	89.69	180.5	268.9	661.0	635.3	25.71	25.708			
5,800.0	5,774.2	5,792.0	5,776.2	14.9	13.5	89.69	180.5	268.9	661.0	634.9	26.13	25.296			
5,900.0	5,874.2	5,892.0	5,876.2	15.1	13.7	89.69	180.5	268.9	661.0	634.5	26.55	24.895			
6,000.0	5,974.2	5,992.0	5,976.2	15.3	14.0	89.69	180.5	268.9	661.0	634.1	26.97	24.507			
6,100.0	6,074.2	6,092.0	6,076.2	15.5	14.2	89.69	180.5	268.9	661.0	633.6	27.40	24.129			
6,200.0	6,174.2	6,192.0	6,176.2	15.7	14.4	89.69	180.5	268.9	661.0	633.2	27.82	23.763			
6,300.0	6,274.2	6,292.0	6,276.2	15.9	14.6	89.69	180.5	268.9	661.0	632.8	28.24	23.406			
6,400.0	6,374.2	6,392.0	6,376.2	16.0	14.8	89.69	180.5	268.9	661.0	632.4	28.67	23.060			
6,500.0	6,474.2	6,492.0	6,476.2	16.2	15.0	89.69	180.5	268.9	661.0	631.9	29.09	22.723			
6,600.0	6,574.2	6,592.0	6,576.2	16.4	15.2	89.69	180.5	268.9	661.0	631.5	29.52	22.395			
6,700.0	6,674.2	6,692.0	6,676.2	16.6	15.4	89.69	180.5	268.9	661.0	631.1	29.94	22.076			
6,800.0	6,774.1	6,792.2	6,776.3	16.8	15.6	-90.31	179.6	268.9	661.0	630.7	30.35	21.779			
6,900.0	6,872.8	6,892.9	6,875.7	16.9	15.7	-90.30	163.9	268.9	661.0	630.4	30.59	21.612			
7,000.0	6,966.7	6,993.6	6,970.1	17.0	15.8	-90.28	129.5	268.9	661.0	630.3	30.72	21.521			
7,100.0	7,052.3	7,094.2	7,056.1	17.1	15.9	-90.25	77.6	268.9	661.0	630.2	30.82	21.447			
7,200.0	7,126.6	7,194.7	7,130.4	17.1	16.0	-90.21	10.2	268.9	661.0	630.0	31.02	21.311			
7,300.0	7,186.9	7,295.1	7,190.5	17.2	16.1	-90.16	-70.1	268.9	661.0	629.6	31.42	21.035			
7,400.0	7,230.8	7,395.4	7,233.9	17.4	16.3	-90.11	-160.3	268.9	661.0	628.9	32.14	20.566			
7,500.0	7,256.8	7,495.6	7,259.3	17.8	16.8	-90.05	-257.1	268.9	661.0	627.8	33.22	19.899			
7,600.0	7,264.9	7,595.5	7,266.0	18.4	17.5	-89.92	-356.7	268.9	661.0	626.4	34.64	19.081			
7,600.0	7,264.0	7,595.6	7,266.0	18.4	17.5	-90.00	-356.7	268.9	661.0	626.4	34.64	19.080			
7,700.0	7,263.5	7,695.6	7,265.5	19.2	18.4	-90.00	-456.7	268.9	661.0	624.6	36.40	18.157			
7,800.0	7,263.1	7,795.6	7,265.0	20.1	19.4	-90.00	-556.7	268.9	661.0	622.6	38.46	17.185			
7,900.0	7,262.6	7,895.6	7,264.6	21.2	20.6	-90.00	-656.7	268.9	661.0	620.2	40.78	16.209			
8,000.0	7,262.1	7,995.6	7,264.1	22.5	21.8	-90.00	-756.7	268.9	661.0	617.7	43.31	15.262			
8,100.0	7,261.7	8,095.6	7,263.6	23.8	23.2	-90.00	-856.7	268.9	661.0	615.0	46.02	14.362			
8,200.0	7,261.2	8,195.6	7,263.2	25.2	24.6	-90.00	-956.7	268.9	661.0	612.1	48.89	13.522			
8,300.0	7,260.7	8,295.6	7,262.7	26.6	26.1	-90.00	-1,056.7	268.9	661.0	609.1	51.87	12.743			
8,400.0	7,260.2	8,395.6	7,262.2	28.1	27.6	-90.00	-1,156.7	268.9	661.0	606.1	54.97	12.026			
8,500.0	7,259.8	8,495.6	7,261.7	29.7	29.2	-90.00	-1,256.7	268.9	661.0	602.9	58.15	11.368			
8,600.0	7,259.3	8,595.6	7,261.3	31.3	30.8	-90.00	-1,356.7	268.9	661.0	599.6	61.40	10.766			
8,700.0	7,258.8	8,695.6	7,260.8	32.9	32.5	-90.00	-1,456.7	268.9	661.0	596.3	64.72	10.214			
8,800.0	7,258.4	8,795.6	7,260.3	34.6	34.2	-90.00	-1,556.7	268.9	661.0	592.9	68.09	9.708			
8,900.0	7,257.9	8,895.6	7,259.9	36.3	35.9	-90.00	-1,656.7	268.9	661.0	589.5	71.51	9.244			
9,000.0	7,257.4	8,995.6	7,259.4	38.0	37.6	-90.00	-1,756.7	268.9	661.0	586.1	74.96	8.818			
9,100.0	7,256.9	9,095.6	7,258.9	39.7	39.3	-90.00	-1,856.7	268.9	661.0	582.6	78.46	8.425			
9,200.0	7,256.5	9,195.6	7,258.4	41.4	41.1	-90.00	-1,956.7	268.9	661.0	579.0	81.98	8.063			
9,300.0	7,256.0	9,295.6	7,258.0	43.2	42.9	-90.00	-2,056.7	268.9	661.0	575.5	85.53	7.729			
9,400.0	7,255.5	9,395.6	7,257.5	45.0	44.6	-90.00	-2,156.7	268.9	661.0	571.9	89.10	7.419			
9,500.0	7,255.1	9,495.6	7,257.0	46.7	46.4	-90.00	-2,256.7	268.9	661.0	568.3	92.69	7.131			
9,600.0	7,254.6	9,595.6	7,256.6	48.5	48.2	-90.00	-2,356.7	268.9	661.0	564.7	96.30	6.864			
9,700.0	7,254.1	9,695.6	7,256.1	50.3	50.0	-90.00	-2,456.7	268.9	661.0	561.1	99.93	6.615			
9,800.0	7,253.7	9,795.6	7,255.6	52.1	51.9	-90.00	-2,556.7	268.9	661.0	557.4	103.57	6.382			
9,900.0	7,253.2	9,895.6	7,255.1	54.0	53.7	-90.00	-2,656.7	268.9	661.0	553.8	107.23	6.164			
10,000.0	7,252.7	9,995.6	7,254.7	55.8	55.5	-90.00	-2,756.7	268.9	661.0	550.1	110.90	5.961			
10,100.0	7,252.2	10,095.6	7,254.2	57.6	57.4	-90.00	-2,856.7	268.9	661.0	546.4	114.58	5.769			
10,200.0	7,251.8	10,195.6	7,253.7	59.4	59.2	-90.00	-2,956.7	268.9	661.0	542.8	118.26	5.589			

CC - Min centre to center distance or convergent point, SF - min separation factor, ES - min ellipse separation

<b>Company:</b>	Verdad Oil & Gas Corporation	<b>Local Co-ordinate Reference:</b>	Well Young 01N-65W-28-3N
<b>Project:</b>	SEC.28-T1N-R65W	<b>TVD Reference:</b>	WELL @ 5084.0ft (Original Well Elev)
<b>Reference Site:</b>	Young 01N-65W-28 Pad Sec.28-T1N-R65W	<b>MD Reference:</b>	WELL @ 5084.0ft (Original Well Elev)
<b>Site Error:</b>	0.0ft	<b>North Reference:</b>	True
<b>Reference Well:</b>	Young 01N-65W-28-3N	<b>Survey Calculation Method:</b>	Minimum Curvature
<b>Well Error:</b>	0.0ft	<b>Output errors are at</b>	2.00 sigma
<b>Reference Wellbore</b>	Wellbore #1	<b>Database:</b>	Landmark
<b>Reference Design:</b>	Plan #1 (8-29-14)	<b>Offset TVD Reference:</b>	Offset Datum

Offset Design													Offset Site Error:	0.0 ft	
Survey Program: 0-MWD													Offset Well Error:		0.0 ft
Reference		Offset		Semi Major Axis			Distance						Warning		
Measured Depth (ft)	Vertical Depth (ft)	Measured Depth (ft)	Vertical Depth (ft)	Reference (ft)	Offset (ft)	Highside Toolface (°)	Offset Wellbore Centre +N/-S (ft)	+E/-W (ft)	Between Centres (ft)	Between Ellipses (ft)	Minimum Separation (ft)	Separation Factor			
10,300.0	7,251.3	10,295.6	7,253.3	61.3	61.0	-90.00	-3,056.7	268.9	661.0	539.1	121.96	5.420			
10,400.0	7,250.8	10,395.6	7,252.8	63.1	62.9	-90.00	-3,156.7	268.9	661.0	535.4	125.66	5.260			
10,500.0	7,250.4	10,495.6	7,252.3	65.0	64.8	-90.00	-3,256.7	268.9	661.0	531.6	129.38	5.109			
10,600.0	7,249.9	10,595.6	7,251.8	66.8	66.6	-90.00	-3,356.7	268.9	661.0	527.9	133.10	4.966			
10,700.0	7,249.4	10,695.6	7,251.4	68.7	68.5	-90.00	-3,456.7	268.9	661.0	524.2	136.82	4.831			
10,800.0	7,248.9	10,795.6	7,250.9	70.5	70.3	-90.00	-3,556.7	268.9	661.0	520.5	140.55	4.703			
10,900.0	7,248.5	10,895.6	7,250.4	72.4	72.2	-90.00	-3,656.7	268.9	661.0	516.7	144.29	4.581			
11,000.0	7,248.0	10,995.6	7,250.0	74.3	74.1	-90.00	-3,756.7	268.9	661.0	513.0	148.03	4.466			
11,100.0	7,247.5	11,095.6	7,249.5	76.1	75.9	-90.00	-3,856.7	268.9	661.0	509.2	151.77	4.355			
11,200.0	7,247.1	11,195.6	7,249.0	78.0	77.8	-90.00	-3,956.7	268.9	661.0	505.5	155.52	4.250			
11,300.0	7,246.6	11,295.6	7,248.5	79.9	79.7	-90.00	-4,056.7	268.9	661.0	501.7	159.28	4.150			
11,400.0	7,246.1	11,395.6	7,248.1	81.7	81.6	-90.00	-4,156.7	268.9	661.0	498.0	163.03	4.055			
11,500.0	7,245.6	11,495.6	7,247.6	83.6	83.4	-90.00	-4,256.7	268.9	661.0	494.2	166.79	3.963			
11,600.0	7,245.2	11,595.6	7,247.1	85.5	85.3	-90.00	-4,356.7	268.9	661.0	490.5	170.56	3.876			
11,700.0	7,244.7	11,695.6	7,246.7	87.4	87.2	-90.00	-4,456.7	268.9	661.0	486.7	174.32	3.792			
11,800.0	7,244.2	11,795.6	7,246.2	89.3	89.1	-90.00	-4,556.7	268.9	661.0	482.9	178.09	3.712			
11,823.7	7,244.1	11,819.3	7,246.1	89.7	89.5	-90.00	-4,580.4	268.9	661.0	482.1	178.91	3.695			
11,848.6	7,244.0	11,836.2	7,246.0	90.2	89.7	-90.00	-4,597.3	268.9	661.1	481.4	179.64	3.680 SF			

<b>Company:</b>	Verdad Oil & Gas Corporation	<b>Local Co-ordinate Reference:</b>	Well Young 01N-65W-28-3N
<b>Project:</b>	SEC.28-T1N-R65W	<b>TVD Reference:</b>	WELL @ 5084.0ft (Original Well Elev)
<b>Reference Site:</b>	Young 01N-65W-28 Pad Sec.28-T1N-R65W	<b>MD Reference:</b>	WELL @ 5084.0ft (Original Well Elev)
<b>Site Error:</b>	0.0ft	<b>North Reference:</b>	True
<b>Reference Well:</b>	Young 01N-65W-28-3N	<b>Survey Calculation Method:</b>	Minimum Curvature
<b>Well Error:</b>	0.0ft	<b>Output errors are at</b>	2.00 sigma
<b>Reference Wellbore</b>	Wellbore #1	<b>Database:</b>	Landmark
<b>Reference Design:</b>	Plan #1 (8-29-14)	<b>Offset TVD Reference:</b>	Offset Datum

Offset Design													Offset Site Error:	0.0ft		
Survey Program: 0-MWD													Young 01N-65W-28 Pad Sec.28-T1N-R65W - Young 01N-65W-28-8N - Wellbore #1 - Plan #1 (9-2-14)		Offset Well Error:	0.0ft
Reference		Offset		Semi Major Axis			Distance						Warning			
Measured Depth (ft)	Vertical Depth (ft)	Measured Depth (ft)	Vertical Depth (ft)	Reference (ft)	Offset (ft)	Highside Toolface (°)	Offset Wellbore Centre +N/-S (ft)	+E/-W (ft)	Between Centres (ft)	Between Ellipses (ft)	Minimum Separation (ft)	Separation Factor				
0.0	0.0	2.0	2.0	0.0	0.0	89.99	0.0	75.6	75.6	75.6	0.00	N/A				
100.0	100.0	102.0	102.0	0.1	0.1	89.99	0.0	75.6	75.6	75.4	0.23	329.808				
200.0	200.0	202.0	202.0	0.3	0.3	89.99	0.0	75.6	75.6	74.9	0.68	111.392				
300.0	300.0	302.0	302.0	0.6	0.6	89.99	0.0	75.6	75.6	74.5	1.13	67.013				
400.0	400.0	402.0	402.0	0.8	0.8	89.99	0.0	75.6	75.6	74.0	1.58	47.921				
500.0	500.0	502.0	502.0	1.0	1.0	89.99	0.0	75.6	75.6	73.6	2.03	37.295				
600.0	600.0	602.0	602.0	1.2	1.2	89.99	0.0	75.6	75.6	73.1	2.48	30.527				
700.0	700.0	702.0	702.0	1.5	1.5	89.99	0.0	75.6	75.6	72.7	2.93	25.837				
800.0	800.0	802.0	802.0	1.7	1.7	89.99	0.0	75.6	75.6	72.2	3.38	22.397				
900.0	900.0	902.0	902.0	1.9	1.9	89.99	0.0	75.6	75.6	71.8	3.83	19.765				
1,000.0	1,000.0	1,002.0	1,002.0	2.1	2.1	89.99	0.0	75.6	75.6	71.3	4.28	17.687	CC, ES			
1,100.0	1,100.0	1,102.0	1,102.0	2.4	2.4	156.23	0.0	75.6	77.2	72.5	4.72	16.373				
1,200.0	1,199.8	1,201.8	1,201.8	2.6	2.6	157.67	0.0	75.6	82.0	76.9	5.15	15.937				
1,300.0	1,299.5	1,300.0	1,300.0	2.8	2.8	159.11	0.8	77.2	91.7	86.1	5.57	16.461				
1,400.0	1,398.7	1,394.7	1,394.5	3.0	3.0	159.88	3.0	81.5	107.1	101.1	5.98	17.896				
1,500.0	1,498.0	1,489.6	1,489.1	3.3	3.2	159.81	6.7	88.6	125.9	119.5	6.42	19.622				
1,600.0	1,597.2	1,584.2	1,583.1	3.6	3.4	159.12	11.7	98.4	147.4	140.5	6.85	21.499				
1,700.0	1,696.4	1,681.6	1,679.7	3.9	3.7	158.40	17.4	109.5	169.8	162.5	7.30	23.262				
1,800.0	1,795.7	1,779.1	1,776.3	4.1	3.9	157.85	23.1	120.6	192.3	184.5	7.75	24.807				
1,900.0	1,894.9	1,876.5	1,873.0	4.4	4.2	157.41	28.8	131.6	214.7	206.5	8.21	26.166				
2,000.0	1,994.1	1,973.9	1,969.6	4.7	4.5	157.06	34.5	142.7	237.2	228.5	8.67	27.367				
2,100.0	2,093.3	2,071.4	2,066.2	5.0	4.8	156.77	40.1	153.7	259.7	250.5	9.13	28.431				
2,200.0	2,192.6	2,168.8	2,162.9	5.3	5.0	156.52	45.8	164.8	282.2	272.6	9.60	29.383				
2,300.0	2,291.8	2,266.2	2,259.5	5.6	5.3	156.31	51.5	175.9	304.7	294.6	10.08	30.238				
2,400.0	2,391.0	2,363.7	2,356.1	5.9	5.6	156.13	57.2	186.9	327.1	316.6	10.55	31.008				
2,500.0	2,490.3	2,461.1	2,452.8	6.2	5.9	155.97	62.9	198.0	349.6	338.6	11.03	31.705				
2,600.0	2,589.5	2,558.5	2,549.4	6.6	6.2	155.83	68.6	209.0	372.1	360.6	11.51	32.338				
2,700.0	2,688.7	2,655.9	2,646.0	6.9	6.5	155.71	74.2	220.1	394.6	382.7	11.99	32.916				
2,800.0	2,787.9	2,753.4	2,742.7	7.2	6.8	155.60	79.9	231.1	417.2	404.7	12.47	33.445				
2,900.0	2,887.2	2,850.8	2,839.3	7.5	7.1	155.50	85.6	242.2	439.7	426.7	12.96	33.931				
3,000.0	2,986.4	2,948.2	2,936.0	7.8	7.4	155.41	91.3	253.3	462.2	448.7	13.44	34.378				
3,100.0	3,085.6	3,045.7	3,032.6	8.1	7.7	155.33	97.0	264.3	484.7	470.7	13.93	34.792				
3,200.0	3,184.9	3,143.1	3,129.2	8.4	8.0	155.26	102.6	275.4	507.2	492.8	14.42	35.175				
3,300.0	3,284.1	3,240.5	3,225.9	8.7	8.3	155.19	108.3	286.4	529.7	514.8	14.91	35.530				
3,400.0	3,383.3	3,338.0	3,322.5	9.1	8.6	155.13	114.0	297.5	552.2	536.8	15.40	35.861				
3,500.0	3,482.5	3,435.4	3,419.1	9.4	8.9	155.07	119.7	308.6	574.7	558.8	15.89	36.170				
3,600.0	3,581.8	3,532.8	3,515.8	9.7	9.3	155.02	125.4	319.6	597.2	580.8	16.38	36.459				
3,700.0	3,681.0	3,630.3	3,612.4	10.0	9.6	154.97	131.1	330.7	619.7	602.9	16.87	36.729				
3,800.0	3,780.2	3,727.7	3,709.0	10.3	9.9	154.93	136.7	341.7	642.2	624.9	17.37	36.983				
3,900.0	3,879.5	3,825.1	3,805.7	10.7	10.2	154.89	142.4	352.8	664.7	646.9	17.86	37.222				
4,000.0	3,978.7	3,922.6	3,902.3	11.0	10.5	154.85	148.1	363.9	687.3	668.9	18.35	37.447				
4,100.0	4,077.9	4,020.0	3,998.9	11.3	10.8	154.81	153.8	374.9	709.8	690.9	18.85	37.659				
4,200.0	4,177.1	4,117.4	4,095.6	11.6	11.1	154.77	159.5	386.0	732.3	712.9	19.34	37.859				
4,300.0	4,276.4	4,214.9	4,192.2	11.9	11.4	154.74	165.1	397.0	754.8	735.0	19.84	38.049				
4,400.0	4,375.6	4,312.3	4,288.9	12.2	11.7	154.71	170.8	408.1	777.3	757.0	20.33	38.228				
4,500.0	4,474.9	4,426.9	4,402.6	12.6	12.1	154.75	177.1	420.4	799.1	778.3	20.86	38.315				
4,600.0	4,574.4	4,558.9	4,534.2	12.8	12.3	154.93	182.0	429.9	815.0	793.7	21.35	38.168				
4,700.0	4,674.2	4,692.8	4,668.0	13.0	12.6	155.11	184.1	434.0	823.7	801.9	21.81	37.766				
4,800.0	4,774.2	4,801.0	4,776.2	13.1	12.8	155.21	184.2	434.1	826.2	804.0	22.20	37.224				
4,900.0	4,874.2	4,901.0	4,876.2	13.3	12.9	89.49	184.2	434.1	826.3	803.7	22.58	36.598				
5,000.0	4,974.2	5,001.0	4,976.2	13.5	13.1	89.49	184.2	434.1	826.3	803.3	22.98	35.960				
5,100.0	5,074.2	5,101.0	5,076.2	13.6	13.3	89.49	184.2	434.1	826.3	802.9	23.38	35.340				

CC - Min centre to center distance or convergent point, SF - min separation factor, ES - min ellipse separation

<b>Company:</b>	Verdad Oil & Gas Corporation	<b>Local Co-ordinate Reference:</b>	Well Young 01N-65W-28-3N
<b>Project:</b>	SEC.28-T1N-R65W	<b>TVD Reference:</b>	WELL @ 5084.0ft (Original Well Elev)
<b>Reference Site:</b>	Young 01N-65W-28 Pad Sec.28-T1N-R65W	<b>MD Reference:</b>	WELL @ 5084.0ft (Original Well Elev)
<b>Site Error:</b>	0.0ft	<b>North Reference:</b>	True
<b>Reference Well:</b>	Young 01N-65W-28-3N	<b>Survey Calculation Method:</b>	Minimum Curvature
<b>Well Error:</b>	0.0ft	<b>Output errors are at</b>	2.00 sigma
<b>Reference Wellbore</b>	Wellbore #1	<b>Database:</b>	Landmark
<b>Reference Design:</b>	Plan #1 (8-29-14)	<b>Offset TVD Reference:</b>	Offset Datum

Offset Design													Offset Site Error:	0.0 ft	
Survey Program: 0-MWD													Offset Well Error:		0.0 ft
Reference		Offset		Semi Major Axis			Distance						Warning		
Measured Depth (ft)	Vertical Depth (ft)	Measured Depth (ft)	Vertical Depth (ft)	Reference (ft)	Offset (ft)	Highside Toolface (°)	Offset Wellbore Centre +N/-S (ft)	+E/-W (ft)	Between Centres (ft)	Between Ellipses (ft)	Minimum Separation (ft)	Separation Factor			
5,200.0	5,174.2	5,201.0	5,176.2	13.8	13.5	89.49	184.2	434.1	826.3	802.5	23.79	34.740			
5,300.0	5,274.2	5,301.0	5,276.2	14.0	13.7	89.49	184.2	434.1	826.3	802.1	24.19	34.157			
5,400.0	5,374.2	5,401.0	5,376.2	14.2	13.8	89.49	184.2	434.1	826.3	801.7	24.60	33.591			
5,500.0	5,474.2	5,501.0	5,476.2	14.4	14.0	89.49	184.2	434.1	826.3	801.3	25.01	33.042			
5,600.0	5,574.2	5,601.0	5,576.2	14.5	14.2	89.49	184.2	434.1	826.3	800.9	25.42	32.509			
5,700.0	5,674.2	5,701.0	5,676.2	14.7	14.4	89.49	184.2	434.1	826.3	800.5	25.83	31.991			
5,800.0	5,774.2	5,801.0	5,776.2	14.9	14.6	89.49	184.2	434.1	826.3	800.1	26.24	31.488			
5,900.0	5,874.2	5,901.0	5,876.2	15.1	14.8	89.49	184.2	434.1	826.3	799.6	26.66	30.999			
6,000.0	5,974.2	6,001.0	5,976.2	15.3	15.0	89.49	184.2	434.1	826.3	799.2	27.07	30.524			
6,100.0	6,074.2	6,101.0	6,076.2	15.5	15.2	89.49	184.2	434.1	826.3	798.8	27.49	30.062			
6,200.0	6,174.2	6,201.0	6,176.2	15.7	15.4	89.49	184.2	434.1	826.3	798.4	27.90	29.612			
6,300.0	6,274.2	6,301.0	6,276.2	15.9	15.6	89.49	184.2	434.1	826.3	798.0	28.32	29.175			
6,400.0	6,374.2	6,401.0	6,376.2	16.0	15.8	89.49	184.2	434.1	826.3	797.6	28.74	28.750			
6,500.0	6,474.2	6,501.0	6,476.2	16.2	15.9	89.49	184.2	434.1	826.3	797.1	29.16	28.336			
6,600.0	6,574.2	6,601.0	6,576.2	16.4	16.1	89.49	184.2	434.1	826.3	796.7	29.58	27.932			
6,700.0	6,674.2	6,701.0	6,676.2	16.6	16.3	89.49	184.2	434.1	826.3	796.3	30.00	27.540			
6,800.0	6,774.1	6,801.4	6,776.6	16.8	16.5	-90.51	183.3	434.1	826.3	795.9	30.41	27.173			
6,900.0	6,872.8	6,902.8	6,876.6	16.9	16.6	-90.50	167.6	434.1	826.3	795.7	30.65	26.963			
7,000.0	6,966.7	7,004.2	6,971.7	17.0	16.7	-90.48	132.8	434.1	826.3	795.5	30.78	26.849			
7,100.0	7,052.3	7,105.5	7,058.1	17.1	16.8	-90.44	80.3	434.1	826.3	795.4	30.88	26.757			
7,200.0	7,126.6	7,206.6	7,132.7	17.1	16.8	-90.38	12.2	434.1	826.3	795.2	31.08	26.588			
7,300.0	7,186.9	7,307.6	7,192.7	17.2	16.9	-90.31	-68.8	434.1	826.3	794.8	31.49	26.243			
7,400.0	7,230.8	7,408.3	7,235.8	17.4	17.1	-90.22	-159.6	434.1	826.3	794.1	32.20	25.658			
7,500.0	7,256.8	7,508.8	7,260.7	17.8	17.5	-90.13	-256.9	434.1	826.3	793.0	33.28	24.826			
7,600.0	7,264.0	7,609.0	7,266.7	18.4	18.2	-90.05	-356.7	434.1	826.3	791.6	34.71	23.804			
7,700.0	7,263.5	7,709.0	7,266.2	19.2	19.0	-90.05	-456.7	434.1	826.3	789.8	36.47	22.658			
7,800.0	7,263.1	7,809.0	7,265.7	20.1	20.0	-90.05	-556.7	434.1	826.3	787.7	38.52	21.448			
7,900.0	7,262.6	7,909.0	7,265.3	21.2	21.1	-90.05	-656.7	434.1	826.3	785.4	40.84	20.233			
8,000.0	7,262.1	8,009.0	7,264.8	22.5	22.3	-90.04	-756.7	434.1	826.3	782.9	43.37	19.053			
8,100.0	7,261.7	8,109.0	7,264.3	23.8	23.7	-90.04	-856.7	434.1	826.3	780.2	46.08	17.933			
8,200.0	7,261.2	8,209.0	7,263.8	25.2	25.1	-90.04	-956.7	434.1	826.3	777.3	48.94	16.885			
8,300.0	7,260.7	8,309.0	7,263.3	26.6	26.5	-90.04	-1,056.7	434.1	826.3	774.4	51.92	15.914			
8,400.0	7,260.2	8,409.0	7,262.8	28.1	28.0	-90.04	-1,156.7	434.1	826.3	771.3	55.01	15.020			
8,500.0	7,259.8	8,509.0	7,262.3	29.7	29.6	-90.04	-1,256.7	434.1	826.3	768.1	58.19	14.200			
8,600.0	7,259.3	8,609.0	7,261.8	31.3	31.2	-90.04	-1,356.7	434.1	826.3	764.8	61.44	13.448			
8,700.0	7,258.8	8,709.0	7,261.3	32.9	32.8	-90.04	-1,456.7	434.1	826.3	761.5	64.76	12.760			
8,800.0	7,258.4	8,809.0	7,260.9	34.6	34.5	-90.03	-1,556.7	434.1	826.3	758.1	68.13	12.128			
8,900.0	7,257.9	8,909.0	7,260.4	36.3	36.2	-90.03	-1,656.7	434.1	826.3	754.7	71.54	11.549			
9,000.0	7,257.4	9,009.0	7,259.9	38.0	37.9	-90.03	-1,756.7	434.1	826.3	751.3	75.00	11.017			
9,100.0	7,256.9	9,109.0	7,259.4	39.7	39.6	-90.03	-1,856.7	434.1	826.3	747.8	78.49	10.527			
9,200.0	7,256.5	9,209.0	7,258.9	41.4	41.4	-90.03	-1,956.7	434.1	826.3	744.3	82.01	10.075			
9,300.0	7,256.0	9,309.0	7,258.4	43.2	43.1	-90.03	-2,056.7	434.1	826.3	740.7	85.56	9.657			
9,400.0	7,255.5	9,409.0	7,257.9	45.0	44.9	-90.03	-2,156.7	434.1	826.3	737.1	89.13	9.270			
9,500.0	7,255.1	9,509.0	7,257.4	46.7	46.7	-90.03	-2,256.7	434.1	826.3	733.5	92.72	8.911			
9,600.0	7,254.6	9,609.0	7,256.9	48.5	48.5	-90.02	-2,356.7	434.1	826.3	729.9	96.34	8.577			
9,700.0	7,254.1	9,709.0	7,256.5	50.3	50.3	-90.02	-2,456.7	434.1	826.3	726.3	99.96	8.266			
9,800.0	7,253.7	9,809.0	7,256.0	52.1	52.1	-90.02	-2,556.7	434.1	826.3	722.7	103.60	7.975			
9,900.0	7,253.2	9,909.0	7,255.5	54.0	53.9	-90.02	-2,656.7	434.1	826.3	719.0	107.26	7.704			
10,000.0	7,252.7	10,009.0	7,255.0	55.8	55.7	-90.02	-2,756.7	434.1	826.3	715.3	110.93	7.449			
10,100.0	7,252.2	10,109.0	7,254.5	57.6	57.6	-90.02	-2,856.7	434.1	826.3	711.7	114.60	7.210			
10,200.0	7,251.8	10,209.0	7,254.0	59.4	59.4	-90.02	-2,956.7	434.1	826.3	708.0	118.29	6.985			
10,300.0	7,251.3	10,309.0	7,253.5	61.3	61.2	-90.02	-3,056.7	434.1	826.3	704.3	121.99	6.773			

CC - Min centre to center distance or convergent point, SF - min separation factor, ES - min ellipse separation

<b>Company:</b>	Verdad Oil & Gas Corporation	<b>Local Co-ordinate Reference:</b>	Well Young 01N-65W-28-3N
<b>Project:</b>	SEC.28-T1N-R65W	<b>TVD Reference:</b>	WELL @ 5084.0ft (Original Well Elev)
<b>Reference Site:</b>	Young 01N-65W-28 Pad Sec.28-T1N-R65W	<b>MD Reference:</b>	WELL @ 5084.0ft (Original Well Elev)
<b>Site Error:</b>	0.0ft	<b>North Reference:</b>	True
<b>Reference Well:</b>	Young 01N-65W-28-3N	<b>Survey Calculation Method:</b>	Minimum Curvature
<b>Well Error:</b>	0.0ft	<b>Output errors are at</b>	2.00 sigma
<b>Reference Wellbore</b>	Wellbore #1	<b>Database:</b>	Landmark
<b>Reference Design:</b>	Plan #1 (8-29-14)	<b>Offset TVD Reference:</b>	Offset Datum

Offset Design													Offset Site Error:	0.0 ft	
Survey Program: 0-MWD													Offset Well Error:		0.0 ft
Reference		Offset		Semi Major Axis			Distance						Warning		
Measured Depth (ft)	Vertical Depth (ft)	Measured Depth (ft)	Vertical Depth (ft)	Reference (ft)	Offset (ft)	Highside Toolface (°)	Offset Wellbore Centre +N/-S (ft)	+E/-W (ft)	Between Centres (ft)	Between Ellipses (ft)	Minimum Separation (ft)	Separation Factor			
10,400.0	7,250.8	10,409.0	7,253.0	63.1	63.1	-90.02	-3,156.7	434.1	826.3	700.6	125.69	6.574			
10,500.0	7,250.4	10,509.0	7,252.6	65.0	64.9	-90.01	-3,256.7	434.1	826.3	696.9	129.40	6.385			
10,600.0	7,249.9	10,609.0	7,252.1	66.8	66.8	-90.01	-3,356.7	434.1	826.3	693.2	133.12	6.207			
10,700.0	7,249.4	10,709.0	7,251.6	68.7	68.6	-90.01	-3,456.7	434.1	826.3	689.4	136.85	6.038			
10,800.0	7,248.9	10,809.0	7,251.1	70.5	70.5	-90.01	-3,556.7	434.1	826.3	685.7	140.58	5.878			
10,900.0	7,248.5	10,909.0	7,250.6	72.4	72.4	-90.01	-3,656.7	434.1	826.3	682.0	144.31	5.726			
11,000.0	7,248.0	11,009.0	7,250.1	74.3	74.2	-90.01	-3,756.7	434.1	826.3	678.2	148.05	5.581			
11,100.0	7,247.5	11,109.0	7,249.6	76.1	76.1	-90.01	-3,856.7	434.1	826.3	674.5	151.80	5.443			
11,200.0	7,247.1	11,209.0	7,249.1	78.0	78.0	-90.01	-3,956.7	434.1	826.3	670.7	155.55	5.312			
11,300.0	7,246.6	11,309.0	7,248.6	79.9	79.8	-90.00	-4,056.7	434.1	826.3	667.0	159.30	5.187			
11,400.0	7,246.1	11,409.0	7,248.2	81.7	81.7	-90.00	-4,156.7	434.1	826.3	663.2	163.05	5.067			
11,500.0	7,245.6	11,509.0	7,247.7	83.6	83.6	-90.00	-4,256.7	434.1	826.3	659.5	166.81	4.953			
11,600.0	7,245.2	11,609.0	7,247.2	85.5	85.5	-90.00	-4,356.7	434.1	826.3	655.7	170.58	4.844			
11,638.8	7,245.0	11,647.9	7,247.0	86.2	86.2	-90.00	-4,395.5	434.1	826.3	654.2	172.04	4.803			
11,700.0	7,244.7	11,709.0	7,246.7	87.4	87.4	-90.00	-4,456.7	434.1	826.3	651.9	174.34	4.739			
11,800.0	7,244.2	11,809.0	7,246.2	89.3	89.2	-90.00	-4,556.7	434.1	826.3	648.2	178.08	4.640			
11,823.7	7,244.1	11,832.7	7,246.1	89.7	89.6	-90.00	-4,580.4	434.1	826.3	647.4	178.89	4.619			
11,848.6	7,244.0	11,849.6	7,246.0	90.2	89.8	-90.00	-4,597.3	434.1	826.3	646.7	179.62	4.600 SF			

<b>Company:</b>	Verdad Oil & Gas Corporation	<b>Local Co-ordinate Reference:</b>	Well Young 01N-65W-28-3N
<b>Project:</b>	SEC.28-T1N-R65W	<b>TVD Reference:</b>	WELL @ 5084.0ft (Original Well Elev)
<b>Reference Site:</b>	Young 01N-65W-28 Pad Sec.28-T1N-R65W	<b>MD Reference:</b>	WELL @ 5084.0ft (Original Well Elev)
<b>Site Error:</b>	0.0ft	<b>North Reference:</b>	True
<b>Reference Well:</b>	Young 01N-65W-28-3N	<b>Survey Calculation Method:</b>	Minimum Curvature
<b>Well Error:</b>	0.0ft	<b>Output errors are at</b>	2.00 sigma
<b>Reference Wellbore</b>	Wellbore #1	<b>Database:</b>	Landmark
<b>Reference Design:</b>	Plan #1 (8-29-14)	<b>Offset TVD Reference:</b>	Offset Datum

Offset Design													Offset Site Error:	0.0 ft	
Survey Program: 0-MWD													Offset Well Error:		0.0 ft
Reference				Offset			Semi Major Axis			Distance				Warning	
Measured Depth (ft)	Vertical Depth (ft)	Measured Depth (ft)	Vertical Depth (ft)	Reference (ft)	Offset (ft)	Highside Toolface (°)	Offset Wellbore Centre +N/-S (ft)	+E/-W (ft)	Between Centres (ft)	Between Ellipses (ft)	Minimum Separation (ft)	Separation Factor			
0.0	0.0	3.0	3.0	0.0	0.0	89.99	0.0	92.4	92.4	92.4	0.00	N/A			
100.0	100.0	103.0	103.0	0.1	0.1	89.99	0.0	92.4	92.4	92.2	0.23	399.185			
200.0	200.0	203.0	203.0	0.3	0.3	89.99	0.0	92.4	92.4	91.7	0.68	135.696			
300.0	300.0	303.0	303.0	0.6	0.6	89.99	0.0	92.4	92.4	91.3	1.13	81.742			
400.0	400.0	403.0	403.0	0.8	0.8	89.99	0.0	92.4	92.4	90.8	1.58	58.487			
500.0	500.0	503.0	503.0	1.0	1.0	89.99	0.0	92.4	92.4	90.4	2.03	45.533			
600.0	600.0	603.0	603.0	1.2	1.2	89.99	0.0	92.4	92.4	89.9	2.48	37.277			
700.0	700.0	703.0	703.0	1.5	1.5	89.99	0.0	92.4	92.4	89.5	2.93	31.555			
800.0	800.0	803.0	803.0	1.7	1.7	89.99	0.0	92.4	92.4	89.0	3.38	27.356			
900.0	900.0	903.0	903.0	1.9	1.9	89.99	0.0	92.4	92.4	88.6	3.83	24.143			
965.6	965.6	968.6	968.6	2.1	2.1	89.99	0.0	92.4	92.4	88.3	4.12	22.415 CC			
1,000.0	1,000.0	1,002.9	1,002.9	2.1	2.1	89.99	0.0	92.4	92.4	88.1	4.28	21.608 ES			
1,100.0	1,100.0	1,100.0	1,100.0	2.4	2.4	155.75	0.6	94.1	95.7	91.0	4.70	20.346 SF			
1,200.0	1,199.8	1,196.2	1,196.1	2.6	2.6	155.87	2.3	98.7	105.3	100.2	5.12	20.576			
1,300.0	1,299.5	1,291.4	1,290.9	2.8	2.8	156.03	5.1	106.3	121.2	115.7	5.54	21.890			
1,400.0	1,398.7	1,385.0	1,383.8	3.0	3.0	156.20	8.8	116.7	142.9	137.0	5.96	23.983			
1,500.0	1,498.0	1,479.7	1,477.5	3.3	3.3	156.14	13.5	129.7	167.7	161.3	6.40	26.215			
1,600.0	1,597.2	1,576.5	1,573.2	3.6	3.5	156.06	18.5	143.3	192.9	186.0	6.84	28.203			
1,700.0	1,696.4	1,673.3	1,668.9	3.9	3.8	155.99	23.4	156.9	218.0	210.7	7.29	29.921			
1,800.0	1,795.7	1,770.1	1,764.6	4.1	4.1	155.94	28.4	170.4	243.2	235.4	7.74	31.415			
1,900.0	1,894.9	1,866.9	1,860.3	4.4	4.4	155.90	33.3	184.0	268.3	260.1	8.20	32.717			
2,000.0	1,994.1	1,963.6	1,956.0	4.7	4.7	155.87	38.2	197.6	293.5	284.8	8.66	33.869			
2,100.0	2,093.3	2,060.4	2,051.7	5.0	5.0	155.84	43.2	211.2	318.6	309.5	9.13	34.888			
2,200.0	2,192.6	2,157.2	2,147.4	5.3	5.4	155.81	48.1	224.8	343.7	334.1	9.60	35.794			
2,300.0	2,291.8	2,254.0	2,243.1	5.6	5.7	155.79	53.1	238.4	368.9	358.8	10.08	36.606			
2,400.0	2,391.0	2,350.8	2,338.8	5.9	6.0	155.77	58.0	252.0	394.0	383.5	10.55	37.336			
2,500.0	2,490.3	2,447.6	2,434.5	6.2	6.3	155.76	62.9	265.6	419.2	408.1	11.03	37.996			
2,600.0	2,589.5	2,544.4	2,530.3	6.6	6.7	155.74	67.9	279.2	444.3	432.8	11.51	38.594			
2,700.0	2,688.7	2,641.2	2,626.0	6.9	7.0	155.73	72.8	292.8	469.4	457.4	11.99	39.139			
2,800.0	2,787.9	2,737.9	2,721.7	7.2	7.3	155.72	77.7	306.4	494.6	482.1	12.48	39.637			
2,900.0	2,887.2	2,834.7	2,817.4	7.5	7.7	155.71	82.7	320.0	519.7	506.8	12.96	40.094			
3,000.0	2,986.4	2,931.5	2,913.1	7.8	8.0	155.70	87.6	333.6	544.9	531.4	13.45	40.514			
3,100.0	3,085.6	3,028.3	3,008.8	8.1	8.3	155.69	92.6	347.1	570.0	556.1	13.94	40.902			
3,200.0	3,184.9	3,125.1	3,104.5	8.4	8.7	155.68	97.5	360.7	595.1	580.7	14.42	41.261			
3,300.0	3,284.1	3,221.9	3,200.2	8.7	9.0	155.67	102.4	374.3	620.3	605.4	14.91	41.594			
3,400.0	3,383.3	3,318.7	3,295.9	9.1	9.3	155.67	107.4	387.9	645.4	630.0	15.40	41.904			
3,500.0	3,482.5	3,415.5	3,391.6	9.4	9.7	155.66	112.3	401.5	670.6	654.7	15.89	42.193			
3,600.0	3,581.8	3,512.3	3,487.3	9.7	10.0	155.65	117.3	415.1	695.7	679.3	16.38	42.462			
3,700.0	3,681.0	3,609.0	3,583.0	10.0	10.4	155.65	122.2	428.7	720.9	704.0	16.88	42.715			
3,800.0	3,780.2	3,705.8	3,678.7	10.3	10.7	155.64	127.1	442.3	746.0	728.6	17.37	42.952			
3,900.0	3,879.5	3,802.6	3,774.4	10.7	11.0	155.64	132.1	455.9	771.1	753.3	17.86	43.174			
4,000.0	3,978.7	3,899.4	3,870.1	11.0	11.4	155.64	137.0	469.5	796.3	777.9	18.35	43.383			
4,100.0	4,077.9	3,996.2	3,965.8	11.3	11.7	155.63	141.9	483.1	821.4	802.6	18.85	43.581			
4,200.0	4,177.1	4,093.0	4,061.5	11.6	12.1	155.63	146.9	496.7	846.6	827.2	19.34	43.767			
4,300.0	4,276.4	4,189.8	4,157.2	11.9	12.4	155.62	151.8	510.3	871.7	851.9	19.84	43.943			
4,400.0	4,375.6	4,286.6	4,252.9	12.2	12.8	155.62	156.8	523.8	896.8	876.5	20.33	44.110			
4,500.0	4,474.9	4,383.4	4,348.6	12.6	13.1	155.68	161.7	537.4	921.8	901.0	20.84	44.234			
4,600.0	4,574.4	4,480.8	4,444.9	12.8	13.4	155.79	166.7	551.1	944.5	923.2	21.34	44.259			
4,700.0	4,674.2	4,578.8	4,541.8	13.0	13.8	155.80	171.7	564.9	964.1	942.2	21.81	44.193			
4,800.0	4,774.2	4,709.7	4,671.5	13.1	14.2	155.64	177.8	581.6	979.4	957.1	22.31	43.892			
4,900.0	4,874.2	4,856.8	4,818.1	13.3	14.5	89.69	182.2	594.0	987.9	965.1	22.78	43.367			
5,000.0	4,974.2	5,005.0	4,966.1	13.5	14.8	89.58	184.1	599.2	991.4	968.2	23.24	42.657			

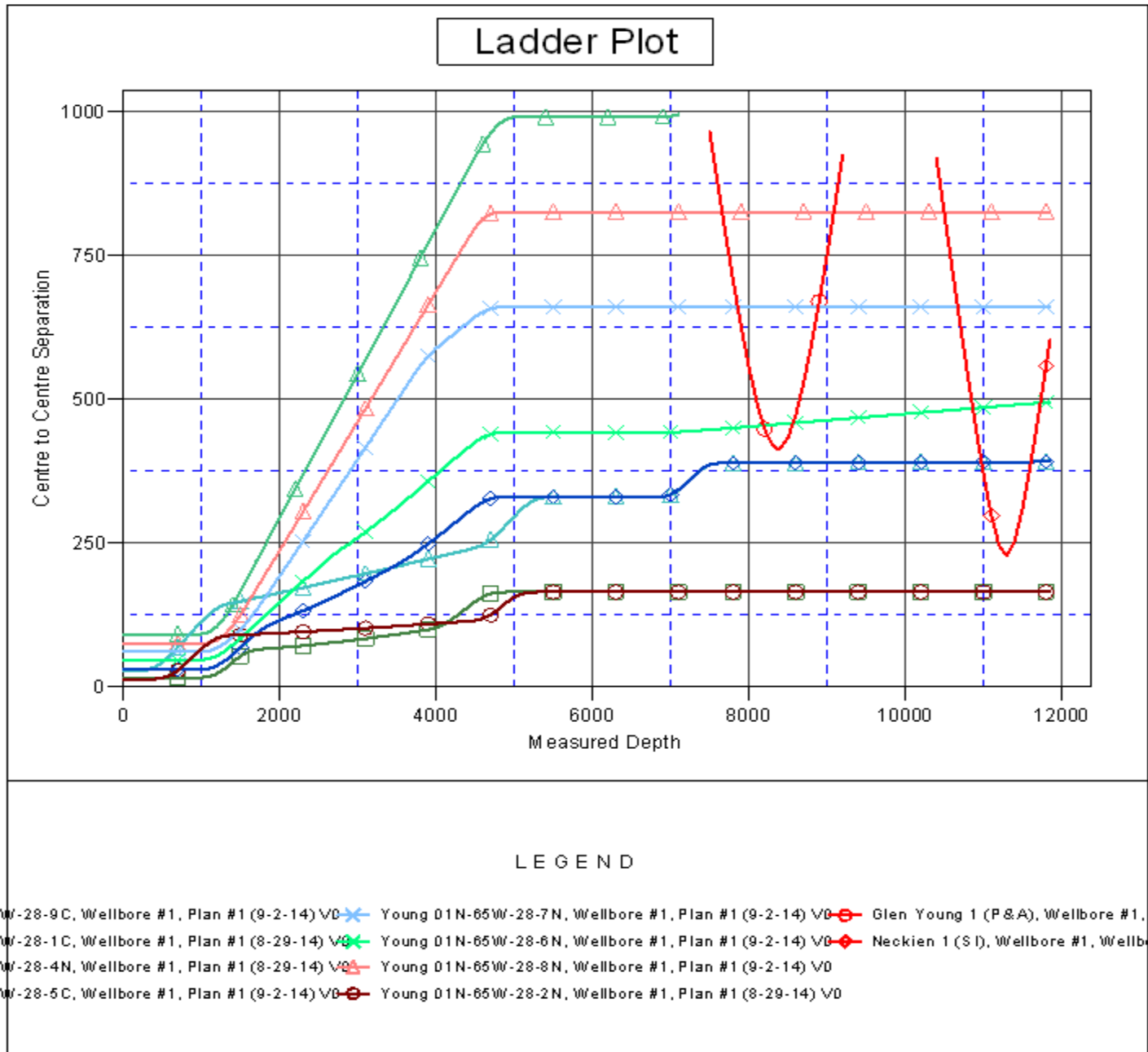
CC - Min centre to center distance or convergent point, SF - min separation factor, ES - min ellipse separation

<b>Company:</b>	Verdad Oil & Gas Corporation	<b>Local Co-ordinate Reference:</b>	Well Young 01N-65W-28-3N
<b>Project:</b>	SEC.28-T1N-R65W	<b>TVD Reference:</b>	WELL @ 5084.0ft (Original Well Elev)
<b>Reference Site:</b>	Young 01N-65W-28 Pad Sec.28-T1N-R65W	<b>MD Reference:</b>	WELL @ 5084.0ft (Original Well Elev)
<b>Site Error:</b>	0.0ft	<b>North Reference:</b>	True
<b>Reference Well:</b>	Young 01N-65W-28-3N	<b>Survey Calculation Method:</b>	Minimum Curvature
<b>Well Error:</b>	0.0ft	<b>Output errors are at</b>	2.00 sigma
<b>Reference Wellbore</b>	Wellbore #1	<b>Database:</b>	Landmark
<b>Reference Design:</b>	Plan #1 (8-29-14)	<b>Offset TVD Reference:</b>	Offset Datum

Offset Design													Offset Site Error:	0.0 ft	
Survey Program: 0-MWD													Offset Well Error:		0.0 ft
Reference		Offset		Semi Major Axis			Distance						Warning		
Measured Depth (ft)	Vertical Depth (ft)	Measured Depth (ft)	Vertical Depth (ft)	Reference (ft)	Offset (ft)	Highside Toolface (°)	Offset Wellbore Centre +N/-S (ft)	+E/-W (ft)	Between Centres (ft)	Between Ellipses (ft)	Minimum Separation (ft)	Separation Factor			
5,100.0	5,074.2	5,116.1	5,077.2	13.6	14.9	89.58	184.2	599.4	991.6	967.9	23.64	41.939			
5,200.0	5,174.2	5,216.1	5,177.2	13.8	15.1	89.58	184.2	599.4	991.6	967.5	24.04	41.248			
5,300.0	5,274.2	5,316.1	5,277.2	14.0	15.3	89.58	184.2	599.4	991.6	967.1	24.44	40.577			
5,400.0	5,374.2	5,416.1	5,377.2	14.2	15.4	89.58	184.2	599.4	991.6	966.7	24.84	39.924			
5,500.0	5,474.2	5,516.1	5,477.2	14.4	15.6	89.58	184.2	599.4	991.6	966.3	25.24	39.289			
5,600.0	5,574.2	5,616.1	5,577.2	14.5	15.8	89.58	184.2	599.4	991.6	965.9	25.64	38.672			
5,700.0	5,674.2	5,716.1	5,677.2	14.7	15.9	89.58	184.2	599.4	991.6	965.5	26.04	38.072			
5,800.0	5,774.2	5,816.1	5,777.2	14.9	16.1	89.58	184.2	599.4	991.6	965.1	26.45	37.488			
5,900.0	5,874.2	5,916.1	5,877.2	15.1	16.3	89.58	184.2	599.4	991.6	964.7	26.86	36.919			
6,000.0	5,974.2	6,016.1	5,977.2	15.3	16.4	89.58	184.2	599.4	991.6	964.3	27.27	36.366			
6,100.0	6,074.2	6,116.1	6,077.2	15.5	16.6	89.58	184.2	599.4	991.6	963.9	27.68	35.828			
6,200.0	6,174.2	6,216.1	6,177.2	15.7	16.8	89.58	184.2	599.4	991.6	963.5	28.09	35.303			
6,300.0	6,274.2	6,316.1	6,277.2	15.9	17.0	89.58	184.2	599.4	991.6	963.1	28.50	34.793			
6,400.0	6,374.2	6,416.1	6,377.2	16.0	17.1	89.58	184.2	599.4	991.6	962.6	28.91	34.295			
6,500.0	6,474.2	6,516.1	6,477.2	16.2	17.3	89.58	184.2	599.4	991.6	962.2	29.33	33.811			
6,600.0	6,574.2	6,616.1	6,577.2	16.4	17.5	89.58	184.2	599.4	991.6	961.8	29.74	33.339			
6,700.0	6,674.2	6,716.1	6,677.2	16.6	17.7	89.58	184.2	599.4	991.6	961.4	30.16	32.878			
6,747.3	6,721.5	6,763.4	6,724.5	16.7	17.8	-90.46	184.2	599.4	991.6	961.2	30.35	32.670			
6,800.0	6,774.1	6,816.0	6,777.1	16.8	17.9	-90.47	184.2	599.4	991.6	961.0	30.57	32.440			
6,900.0	6,872.8	6,914.7	6,875.8	16.9	18.0	-91.33	184.2	599.4	991.8	960.9	30.88	32.117			
7,000.0	6,966.7	7,010.8	6,971.8	17.0	18.2	-93.04	183.8	599.4	993.2	962.1	31.11	31.920			
7,100.0	7,052.3	7,118.9	7,078.7	17.1	18.3	-95.13	168.6	599.4	996.2	964.9	31.25	31.875			

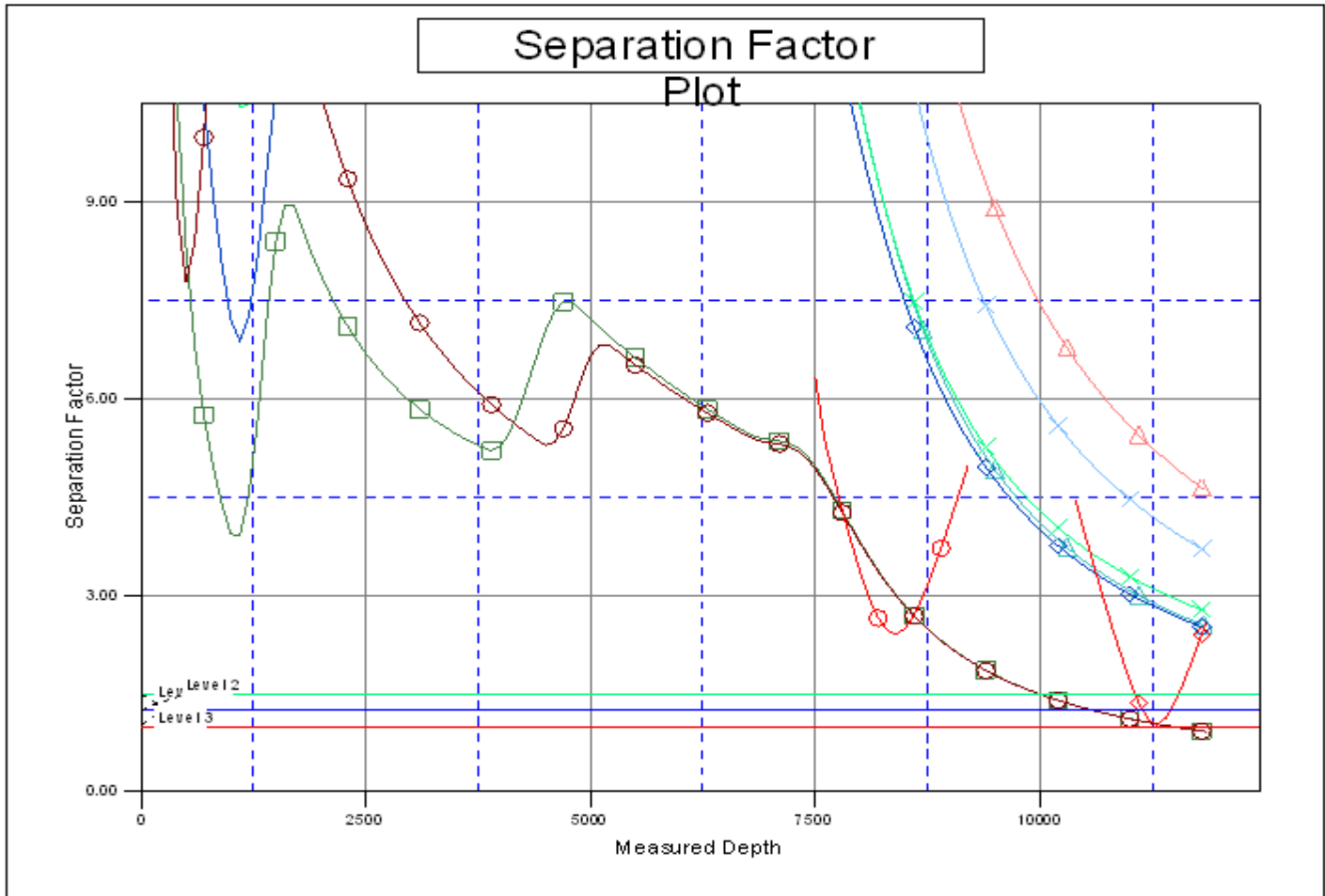
<b>Company:</b>	Verdad Oil & Gas Corporation	<b>Local Co-ordinate Reference:</b>	Well Young 01N-65W-28-3N
<b>Project:</b>	SEC.28-T1N-R65W	<b>TVD Reference:</b>	WELL @ 5084.0ft (Original Well Elev)
<b>Reference Site:</b>	Young 01N-65W-28 Pad Sec.28-T1N-R65W	<b>MD Reference:</b>	WELL @ 5084.0ft (Original Well Elev)
<b>Site Error:</b>	0.0ft	<b>North Reference:</b>	True
<b>Reference Well:</b>	Young 01N-65W-28-3N	<b>Survey Calculation Method:</b>	Minimum Curvature
<b>Well Error:</b>	0.0ft	<b>Output errors are at</b>	2.00 sigma
<b>Reference Wellbore</b>	Wellbore #1	<b>Database:</b>	Landmark
<b>Reference Design:</b>	Plan #1 (8-29-14)	<b>Offset TVD Reference:</b>	Offset Datum

Reference Depths are relative to WELL @ 5084.0ft (Original Well Elev) Coordinates are relative to: Young 01N-65W-28-3N  
 Offset Depths are relative to Offset Datum Coordinate System is US State Plane 1983, Colorado Northern Zone  
 Central Meridian is -105.500000 ° Grid Convergence at Surface is: 0.54°



<b>Company:</b>	Verdad Oil & Gas Corporation	<b>Local Co-ordinate Reference:</b>	Well Young 01N-65W-28-3N
<b>Project:</b>	SEC.28-T1N-R65W	<b>TVD Reference:</b>	WELL @ 5084.0ft (Original Well Elev)
<b>Reference Site:</b>	Young 01N-65W-28 Pad Sec.28-T1N-R65W	<b>MD Reference:</b>	WELL @ 5084.0ft (Original Well Elev)
<b>Site Error:</b>	0.0ft	<b>North Reference:</b>	True
<b>Reference Well:</b>	Young 01N-65W-28-3N	<b>Survey Calculation Method:</b>	Minimum Curvature
<b>Well Error:</b>	0.0ft	<b>Output errors are at</b>	2.00 sigma
<b>Reference Wellbore</b>	Wellbore #1	<b>Database:</b>	Landmark
<b>Reference Design:</b>	Plan #1 (8-29-14)	<b>Offset TVD Reference:</b>	Offset Datum

Reference Depths are relative to WELL @ 5084.0ft (Original Well Elev) Coordinates are relative to: Young 01N-65W-28-3N  
 Offset Depths are relative to Offset Datum Coordinate System is US State Plane 1983, Colorado Northern Zone  
 Central Meridian is -105.500000 ° Grid Convergence at Surface is: 0.54°



LEGEND

- 5W-28-9C, Wellbore #1, Plan #1 (9-2-14) VD ✕ Young 01N-65W-28-7N, Wellbore #1, Plan #1 (9-2-14) VD ○ Glen Young 1 (P&A), Wellbore #1, Wellbore #1, Plan #1 (9-2-14) VD
- 5W-28-1C, Wellbore #1, Plan #1 (8-29-14) VD ✕ Young 01N-65W-28-6N, Wellbore #1, Plan #1 (9-2-14) VD ◇ Neckien 1 (S), Wellbore #1, Wellbore #1, Plan #1 (9-2-14) VD
- 5W-28-4N, Wellbore #1, Plan #1 (8-29-14) VD △ Young 01N-65W-28-8N, Wellbore #1, Plan #1 (9-2-14) VD
- 5W-28-5C, Wellbore #1, Plan #1 (9-2-14) VD ○ Young 01N-65W-28-2N, Wellbore #1, Plan #1 (8-29-14) VD