



**Chevron  
U.S.A., Inc.**

WELL NO.: EMERALD 33AX  
(A2825)  
FIELD . . . : RANGELY, CO.

## SURVEY DATA

RUN NO. 32			
SURVEY TYPE . . .	T-S-T	SURFACE TEMP . .	110.2 F
DATE . . . . .	9/16/2014	BHT . . . . .	153.1 F
METERED RATE . .	1880 B/D	TBG PRESSURE . .	1550 PSI
MEASURED RATE:	1958 B/D	CSG PRESSURE . .	0 PSI
DESIRED RATE . .	N/A	PICK-UP . . . . .	6350' GDA
SERVICE CO. . .	PLS	INJ. FLUID . . . .	H2O

## REMARKS

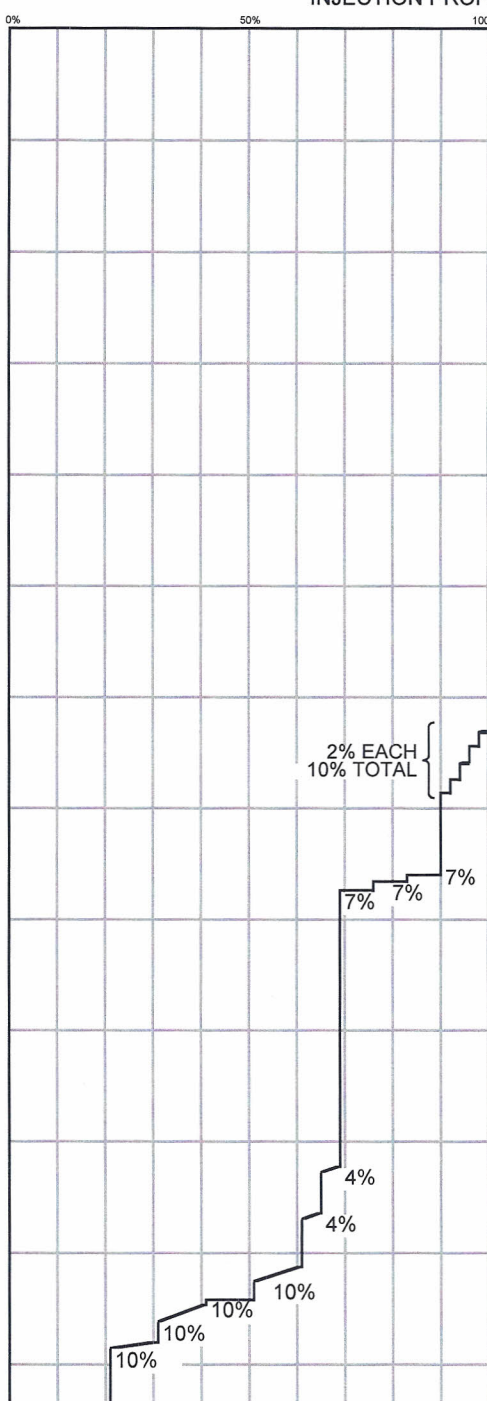
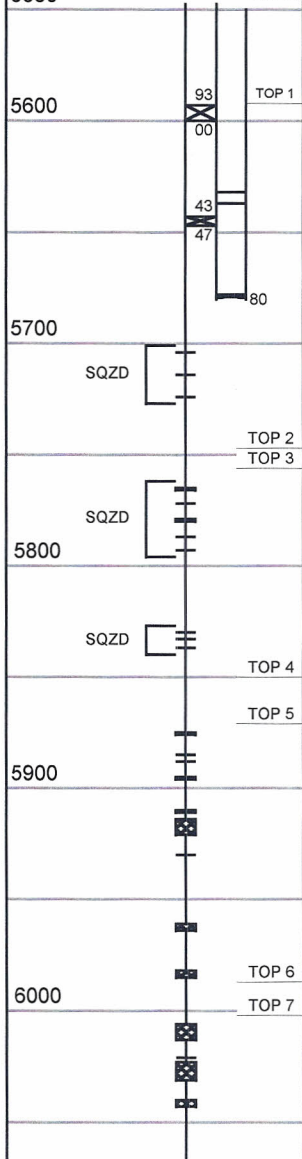
R/A TRACER INDICATES TOP PERF AND PACKERS OK.

RECORDED BY: C.M. STRATTON

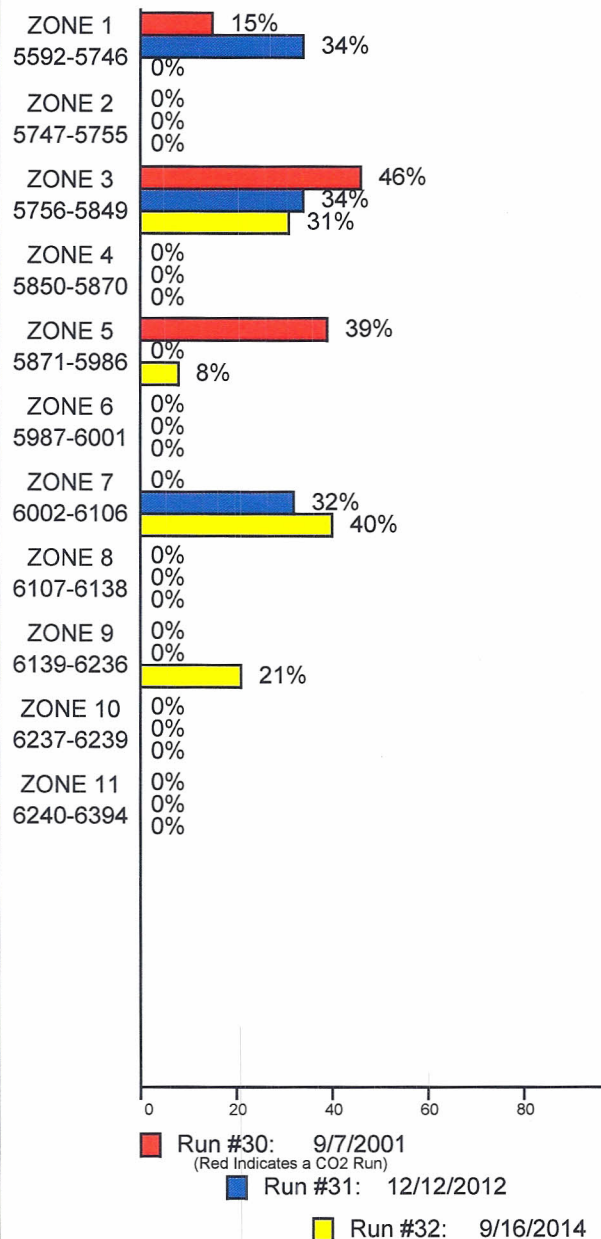
## INJECTION PROFILE

## MECHANICAL INFORMATION

7" 23# CASING	0-8508'
P.B.T.D.	6394'
2-7/8" F.L. TUBING	0-5593'
TOP PACKER	5593-5600'
2-7/8" TUBING JOINT	5600'-5632'
O/F TL SLCK W/ 1.875" "F"	5632'-5637'
2-7/8" TUBING PUP	5637'-5643'
PACKER	5643'-5647'
2-7/8" TUBING JOINT	5647'-5678'
2-7/8" x 2-3/8" X-OVER	5678'-5679'
2-3/8" WEG	5679'-5680'
<b>5550</b>	M-14 "B"



PERCENTAGE INJECTED INTO  
ZONE



## TEMPERATURES (F°)

DATE	RUN #30 9/7/2001	RUN #31 12/12/2012	RUN #32 9/16/2014
SURFACE	95.2	97.0	110.2
5592-5746	---	---	---
5747-5755	---	---	---
5756-5849	---	---	---
5850-5870	---	---	---
5871-5986	---	---	---
5987-6001	---	---	---
6002-6106	---	---	---
6107-6138	---	---	---
6139-6236	---	---	---
6237-6239	---	---	---
6240-6394	---	---	---
GDA (6350)	134.0	126.5	153.1
RATE (B/D)	600	1080	1958
PRESS (PSI)	2150	1450	1550

Service Company: Production Logging Services  
www.productionlogging.com

Emerald 33AX Run 32.xls