

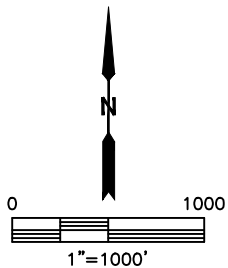
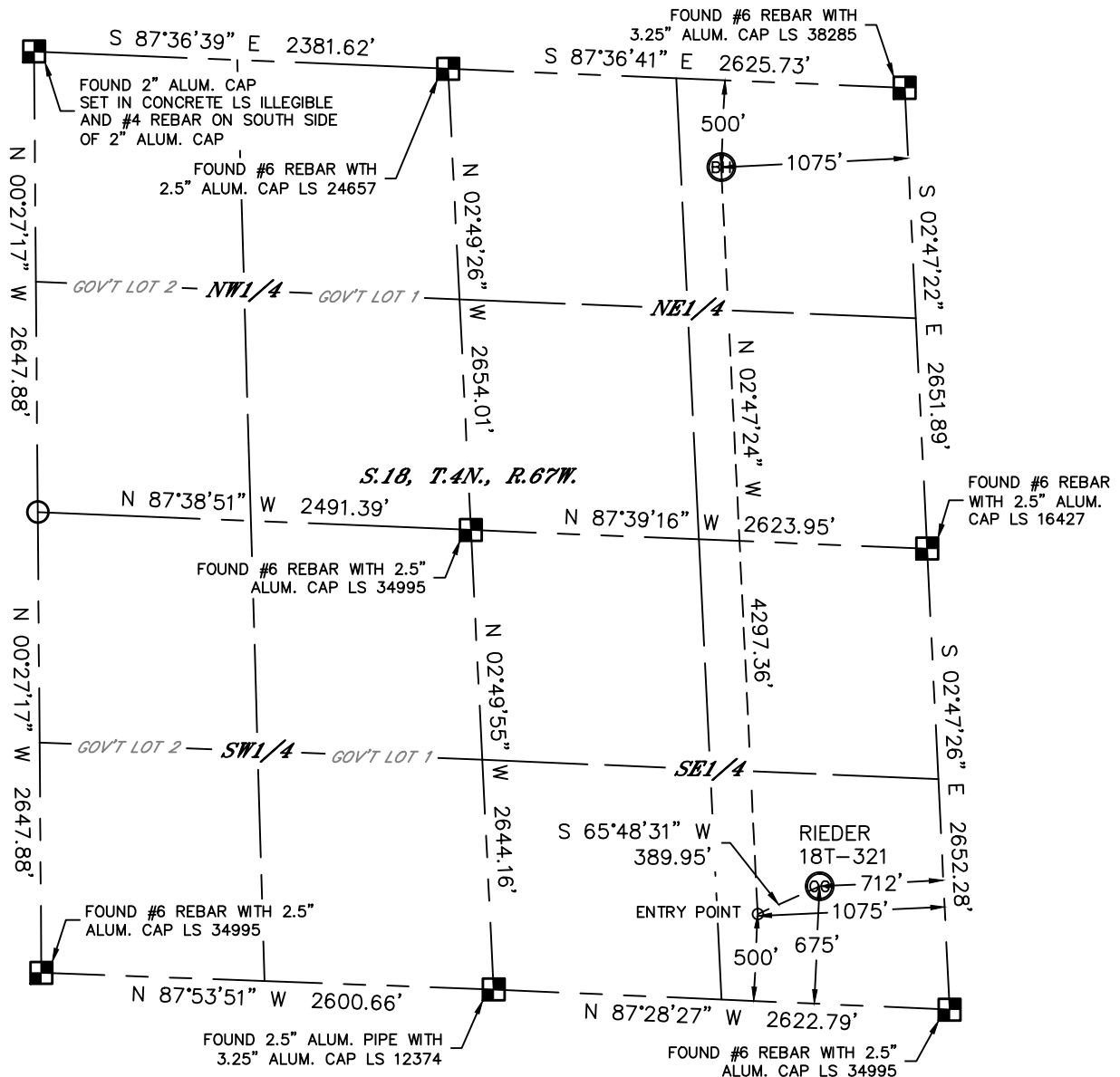


Lat40°, Inc. 1635 Foxtrail Drive, Suite 325 Loveland, CO 970-776-3321

# WELL LOCATION CERTIFICATE

THIS MAP DOES NOT REPRESENT A BOUNDARY SURVEY

SECTION: 18  
TOWNSHIP: 4N  
RANGE: 67W



In accordance with a request from Mac Neumann with PDC ENERGY Lat40°, Inc. has determined the surface location of the RIEDER 18T-321 to be 675' from the SOUTH line and 712' from the EAST line and the bottom hole to be 500' from the NORTH line and 1075' from the EAST line as measured at right angles from the section lines of Section 18, Township 4 North, Range 67 West of the Sixth Principal Meridian, County of Weld, State of Colorado.

I hereby state that this Well Location Certificate was prepared by me, or under my direct supervision, that the fieldwork was completed on 6/26/2014, for and on behalf of PDC ENERGY. That this is not a Land Survey Plat or an Improvement Survey Plat, and that it is not to be relied upon for establishment of fence, building, or other future improvement lines.

#### SURFACE LOCATION

LAT: 40.30785°N  
LONG: 104.92568°W  
PDOP: 1.6  
ELEV: 4806'  
1/4,1/4: SESE

#### BOTTOM HOLE

LAT: 40.31920°N  
LONG: 104.92761°W

#### ENTRY POINT

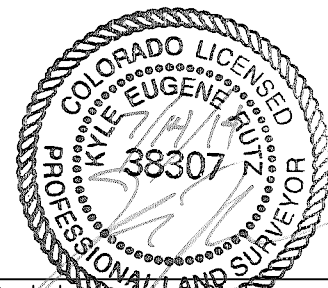
LAT: 40.30742°N  
LONG: 104.92696°W

#### LEGEND

- = ALIQUOT MONUMENT AS DESCRIBED
- = CALCULATED POSITION

Kyle E. Rutz—On behalf of Lat40°, Inc.  
Colorado Licensed Professional  
Land Surveyor No. 38307

DATE: 7/14/2014  
PROJECT#: 2014019



#### NOTE:

- 1) Bearings shown are Grid Bearings of the Colorado State Plane Coordinate System, North Zone, North American Datum 1983. The lineal dimensions as contained herein are based upon the "U.S. Survey Foot."
- 2) Ground elevations are based on an observed GPS elevation (NAVD 1988 DATUM).
- 3) IMPROVEMENTS: See LOCATION DRAWING for all visible improvements within 500' of disturbed area.
- 4) SURFACE USE: CROP LAND
- 5) INSTRUMENT OPERATOR: ADAM KELLY
- 6) NEAREST CULTURAL ITEMS:  
BUILDING: ±652' SE  
BUILDING UNIT: ±710' SE  
HIGH OCCUPANCY BUILDING UNIT: ±5221' SE  
DESIGNATED OUTSIDE ACTIVITY AREA: 5280'+  
PUBLIC ROAD: (CR 44) 659' S  
ABOVEGROUND UTILITY: 703' S  
RAILROAD: 5280'+  
PROPERTY LINE: 340' SE

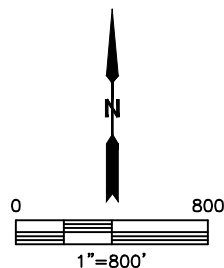
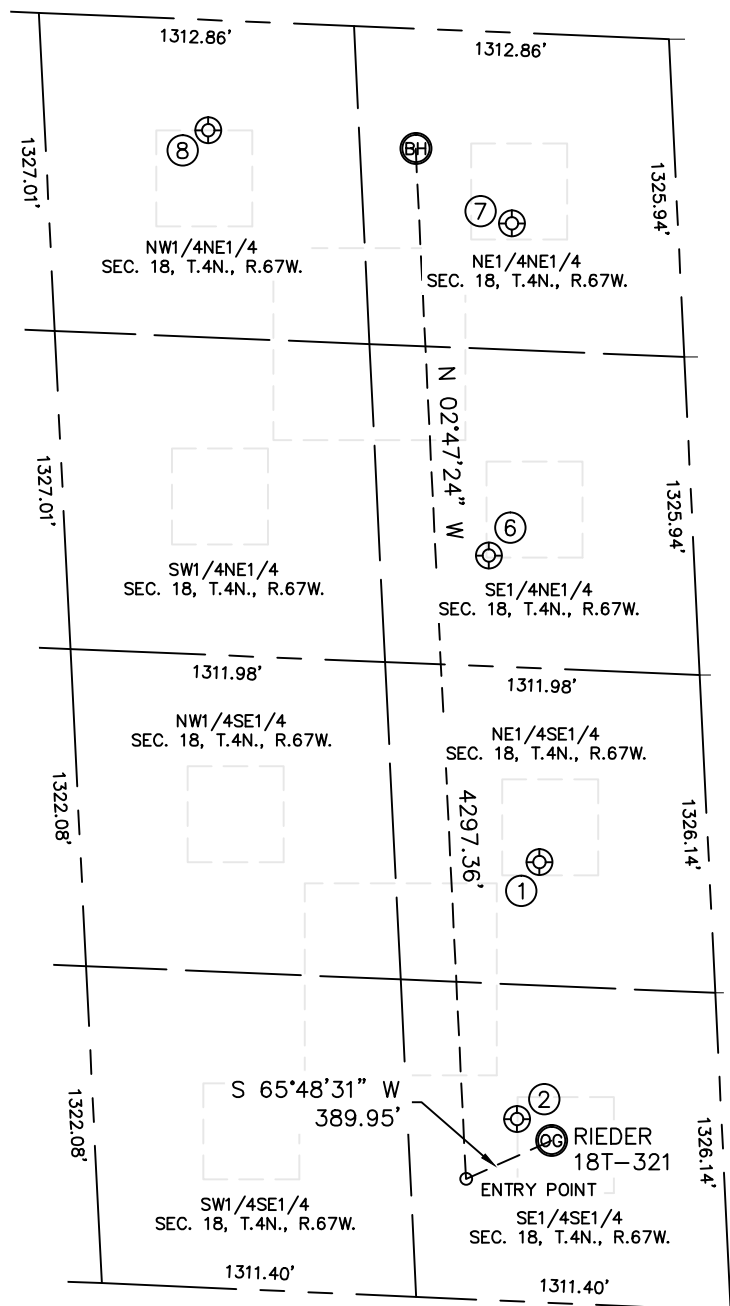


Lat40°, Inc. 1635 Foxtrail Drive, Suite 325 Loveland, CO 970-776-3321

# SITE SKETCH

RIEDER 18T-321

SECTION: 18  
TOWNSHIP: 4N  
RANGE: 67W



WELL NO.	WELL NAME	SHL FOOTAGE				SHL LAT°	SHL LONG°	PDOP	ELEV (FT.)	1/4/1/4
1	EVERY-BROOKS 18-1	1832	FSL	705	FEL	40.31103	-104.92583	1.8	4802	NESE
2	A.R. 18-44	759	FSL	851	FEL	40.30810	-104.92619	1.7	4805	SESE
6	CARLSON 18-2	2181	FNL	854	FEL	40.31454	-104.92656	1.9	4802	NESE
7	CARLSON 18-3	795	FNL	691	FEL	40.31834	-104.92618	1.9	4812	NENE
8	CARLSON 18-1	460	FNL	1935	FEL	40.31943	-104.93071	2.2	4841	NWNE

DATE: 7/14/2014  
PROJECT#: 2014019