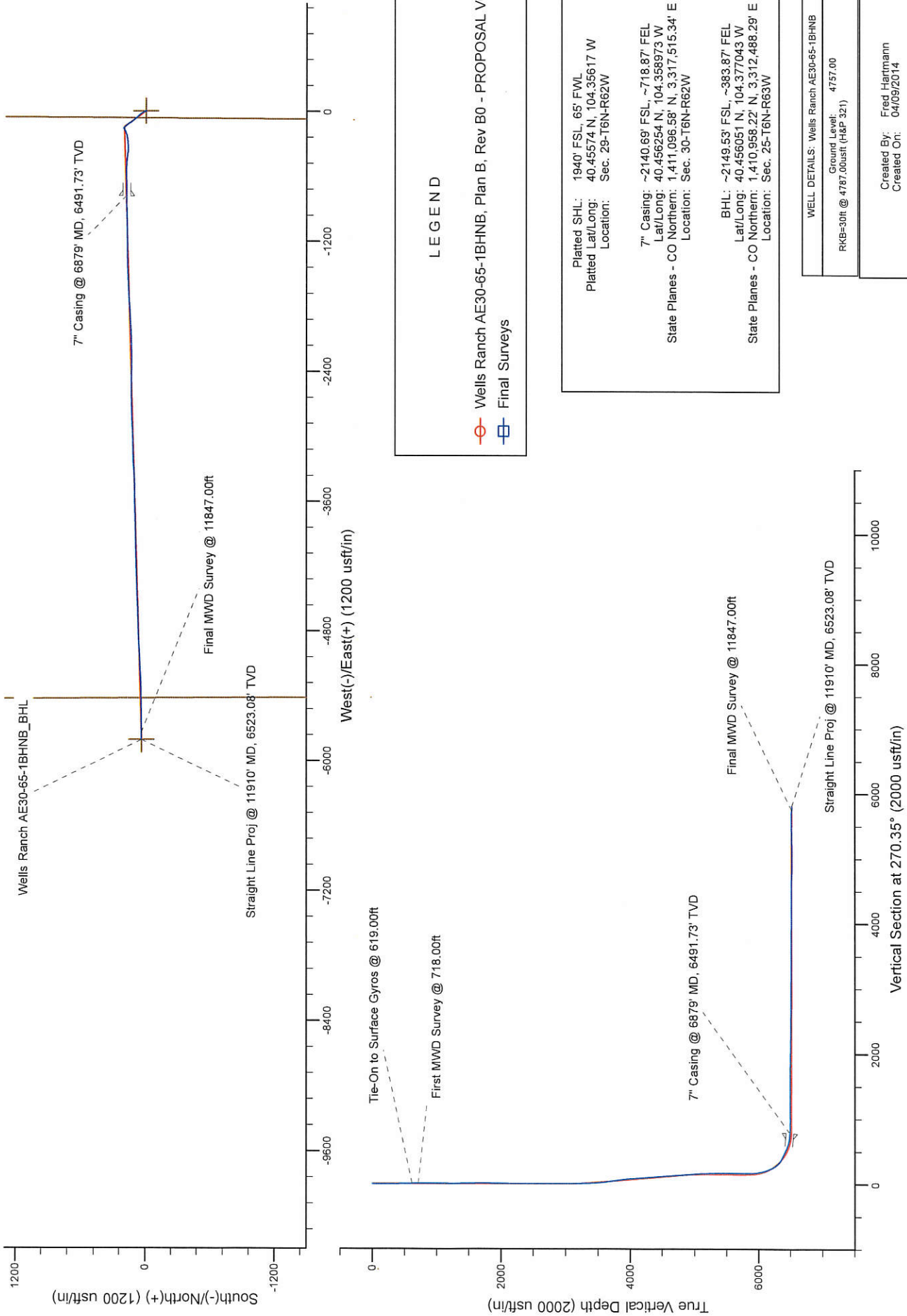


Project: Weld County, CO (NAD 83)
Site: Sec. 29-T6N-R62W (Wells Ranch AE29-32-A PAD)
Well: Wells Ranch AE30-65-1BHNB
Wellbore: Plan B
Design: Final Surveys

Noble Energy

HALLIBURTON
Sperry Drilling



Noble Energy

Weld County, CO (NAD 83)

Sec. 29-T6N-R62W (Wells Ranch AE29-32-A PAD)

Wells Ranch AE30-65-1BHNB

Design: Final Surveys

Sperry Drilling Services

Final Survey Report

09 April, 2014

Well Coordinates: 1,410,919.33 N, 3,318,297.74 E (40° 27' 20.66" N, 104° 21' 22.21" W)

Ground Level: 4,757.00 usft

Local Coordinate Origin:

Viewing Datum:

TVDs to System:

North Reference:

Unit System:

Geodetic Scale Factor Applied

Version: 5000.1 Build: 70

Centered on Well Wells Ranch AE30-65-1BHNB

RKB=30ft @ 4787.00usft (H&P 321)

N

Grid

Dec-Deg - API - US Survey Feet - Custom

HALLIBURTON

Design Report for Wells Ranch AE30-65-1BHNB - Final Surveys

Measured Depth (usft)	Inclination (°)	Azimuth (°)	Vertical Depth (usft)	+N/-S (usft)	+E/-W (usft)	Vertical Section (usft)	Dogleg Rate (°/100usft)
0.00	0.00	0.00	0.00	0.00	0.00	0.00	0.00
235.00	0.10	38.77	235.00	0.16	0.13	-0.13	0.04
421.00	0.80	311.97	420.99	1.15	-0.74	0.74	0.43
619.00	0.60	257.77	618.98	1.86	-2.78	2.79	0.33
Tie-On to Surface Gyros @ 619.00ft							
718.00	0.59	335.44	717.98	2.21	-3.49	3.51	0.75
First MWD Survey @ 718.00ft							
810.00	0.47	337.32	809.97	2.99	-3.84	3.86	0.13
994.00	0.43	10.12	993.97	4.37	-4.01	4.03	0.14
1,085.00	0.80	35.96	1,084.96	5.22	-3.57	3.61	0.50
1,178.00	0.94	31.76	1,177.95	6.39	-2.79	2.83	0.17
1,271.00	0.99	34.17	1,270.94	7.71	-1.94	1.98	0.07
1,364.00	0.94	288.12	1,363.93	8.61	-2.21	2.26	1.66
1,456.00	0.85	307.00	1,455.92	9.25	-3.47	3.53	0.33
1,547.00	1.49	246.82	1,546.90	9.19	-5.10	5.16	1.43
1,639.00	0.26	227.21	1,638.89	8.58	-6.35	6.41	1.36
1,734.00	0.72	160.55	1,733.89	7.87	-6.31	6.36	0.70
1,829.00	0.68	170.28	1,828.88	6.75	-6.02	6.06	0.13
1,924.00	0.79	162.05	1,923.87	5.58	-5.72	5.76	0.16
2,018.00	0.77	186.99	2,017.86	4.33	-5.60	5.63	0.36
2,113.00	0.72	145.48	2,112.86	3.21	-5.34	5.36	0.56
2,208.00	0.83	129.01	2,207.85	2.28	-4.47	4.48	0.26
2,303.00	0.80	142.24	2,302.84	1.32	-3.53	3.53	0.20
2,397.00	0.36	118.86	2,396.83	0.66	-2.86	2.87	0.52
2,492.00	0.61	151.69	2,491.83	0.07	-2.36	2.36	0.38
2,587.00	0.49	167.90	2,586.83	-0.77	-2.04	2.03	0.21
2,681.00	0.53	171.20	2,680.82	-1.59	-1.89	1.88	0.05
2,776.00	0.36	228.71	2,775.82	-2.22	-2.04	2.03	0.48
2,871.00	0.38	292.82	2,870.82	-2.30	-2.56	2.55	0.41
2,966.00	0.21	337.89	2,965.82	-2.01	-2.92	2.90	0.29
3,060.00	1.91	342.39	3,059.80	-0.36	-3.45	3.45	1.81
3,155.00	3.14	347.11	3,154.70	3.68	-4.51	4.54	1.31
3,250.00	4.18	340.91	3,249.51	9.49	-6.23	6.28	1.17
3,345.00	5.53	336.52	3,344.17	16.96	-9.18	9.28	1.47
3,439.00	7.11	337.27	3,437.59	26.48	-13.24	13.39	1.68
3,534.00	9.35	329.31	3,531.61	38.54	-19.45	19.68	2.64
3,629.00	10.85	322.24	3,625.14	52.25	-28.86	29.18	2.05
3,724.00	11.51	316.29	3,718.34	66.17	-40.89	41.28	1.40
3,817.00	12.05	316.14	3,809.38	79.88	-54.02	54.51	0.58
3,912.00	9.74	317.54	3,902.66	92.96	-66.32	66.88	2.45
4,007.00	8.65	323.10	3,996.44	104.60	-76.04	76.67	1.48
4,102.00	6.99	316.30	4,090.56	114.49	-84.32	85.01	2.00
4,196.00	6.05	324.44	4,183.95	122.66	-91.15	91.89	1.40
4,291.00	5.76	322.19	4,278.45	130.50	-96.99	97.77	0.39
4,386.00	6.78	322.75	4,372.88	138.73	-103.30	104.14	1.08
4,481.00	6.43	330.16	4,467.25	147.81	-109.35	110.23	0.97
4,575.00	7.85	326.06	4,560.52	157.70	-115.55	116.50	1.60
4,670.00	7.01	321.28	4,654.72	167.60	-122.80	123.81	1.10
4,765.00	6.61	317.68	4,749.05	176.17	-130.11	131.16	0.62
4,860.00	6.95	316.91	4,843.38	184.41	-137.71	138.82	0.37

Design Report for Wells Ranch AE30-65-1BHNB - Final Surveys

Measured Depth (usft)	Inclination (°)	Azimuth (°)	Vertical Depth (usft)	+N/-S (usft)	+E/-W (usft)	Vertical Section (usft)	Dogleg Rate (°/100usft)
4,955.00	6.41	315.07	4,937.74	192.36	-145.38	146.54	0.61
5,050.00	4.79	323.16	5,032.28	199.29	-151.51	152.71	1.89
5,144.00	3.27	307.26	5,126.05	204.06	-156.00	157.22	1.99
5,239.00	2.16	292.47	5,220.95	206.38	-159.81	161.05	1.37
5,334.00	1.15	328.80	5,315.91	207.88	-161.96	163.21	1.48
5,428.00	0.59	298.94	5,409.90	208.92	-162.87	164.12	0.75
5,523.00	0.53	258.03	5,504.89	209.07	-163.73	164.98	0.42
5,618.00	1.01	161.73	5,599.89	208.18	-163.89	165.14	1.25
5,713.00	0.91	127.49	5,694.87	206.93	-163.03	164.28	0.60
5,771.00	0.66	94.43	5,752.87	206.62	-162.33	163.58	0.87
5,834.00	0.59	129.52	5,815.86	206.39	-161.72	162.96	0.61
5,902.00	2.38	225.80	5,883.84	205.18	-162.46	163.70	3.70
5,950.00	5.50	237.44	5,931.73	203.24	-165.12	166.34	6.68
5,997.00	7.94	242.81	5,978.40	200.55	-169.90	171.11	5.36
6,045.00	11.35	246.17	6,025.71	197.12	-177.18	178.36	7.20
6,092.00	16.23	245.91	6,071.35	192.57	-187.41	188.57	10.38
6,140.00	21.31	246.87	6,116.78	186.40	-201.56	202.68	10.60
6,186.00	23.78	251.49	6,159.26	180.17	-218.05	219.13	6.60
6,234.00	27.29	258.79	6,202.58	174.96	-238.03	239.08	9.81
6,281.00	32.13	261.88	6,243.39	171.10	-260.99	262.01	10.80
6,329.00	39.21	265.87	6,282.37	168.20	-288.79	289.80	15.52
6,376.00	46.62	268.57	6,316.77	166.70	-320.73	321.73	16.24
6,424.00	56.42	272.49	6,346.60	167.13	-358.25	359.25	21.39
6,470.00	61.63	275.44	6,370.27	169.89	-397.57	398.59	12.59
6,518.00	63.95	276.82	6,392.22	174.45	-440.01	441.05	5.47
6,565.00	64.12	275.13	6,412.80	178.85	-482.03	483.10	3.25
6,613.00	64.06	272.14	6,433.78	181.59	-525.12	526.20	5.60
6,660.00	67.92	269.55	6,452.90	182.20	-568.03	569.12	9.63
6,708.00	74.37	266.94	6,468.41	180.79	-613.41	614.48	14.39
6,755.00	80.25	267.67	6,478.73	178.64	-659.19	660.25	12.60
6,803.00	84.13	269.24	6,485.25	177.36	-706.71	707.77	8.71
6,835.00	85.10	270.11	6,488.25	177.18	-738.57	739.63	4.06
6,879.00	85.83	270.09	6,491.73	177.26	-782.43	783.49	1.67
7" Casing @ 6879' MD, 6491.73' TVD							
6,913.00	86.40	270.08	6,494.03	177.31	-816.36	817.41	1.67
6,995.00	88.12	269.29	6,497.95	176.86	-898.26	899.31	2.31
7,087.00	90.86	269.03	6,498.77	175.51	-990.23	991.27	2.99
7,180.00	91.33	269.00	6,497.00	173.91	-1,083.20	1,084.23	0.51
7,273.00	90.18	269.31	6,495.77	172.54	-1,176.18	1,177.20	1.28
7,365.00	90.43	269.42	6,495.28	171.52	-1,268.18	1,269.19	0.30
7,457.00	90.00	268.25	6,494.93	169.65	-1,360.15	1,361.15	1.35
7,549.00	89.63	268.61	6,495.23	167.13	-1,452.12	1,453.10	0.56
7,643.00	90.22	268.85	6,495.35	165.05	-1,546.10	1,547.06	0.68
7,738.00	88.06	266.65	6,496.78	161.32	-1,641.00	1,641.94	3.25
7,832.00	89.14	266.49	6,499.08	155.70	-1,734.80	1,735.71	1.16
7,927.00	88.58	265.89	6,500.97	149.39	-1,829.57	1,830.44	0.86
8,022.00	90.15	267.13	6,502.02	143.61	-1,924.39	1,925.22	2.11
8,117.00	88.92	266.93	6,502.79	138.68	-2,019.25	2,020.05	1.31
8,211.00	88.98	268.21	6,504.51	134.70	-2,113.15	2,113.92	1.36
8,306.00	90.40	269.75	6,505.03	133.01	-2,208.13	2,208.89	2.20
8,401.00	90.00	269.88	6,504.70	132.70	-2,303.13	2,303.89	0.44

Design Report for Wells Ranch AE30-65-1BHNB - Final Surveys

Measured Depth (usft)	Inclination (°)	Azimuth (°)	Vertical Depth (usft)	+N/-S (usft)	+E/-W (usft)	Vertical Section (usft)	Dogleg Rate (°/100usft)
8,496.00	88.55	270.38	6,505.90	132.92	-2,398.12	2,398.88	1.61
8,590.00	90.12	270.29	6,506.99	133.47	-2,492.11	2,492.87	1.67
8,685.00	89.51	270.23	6,507.30	133.90	-2,587.10	2,587.86	0.65
8,780.00	87.97	269.06	6,509.39	133.31	-2,682.08	2,682.83	2.04
8,875.00	88.43	267.24	6,512.37	130.24	-2,776.97	2,777.71	1.98
8,970.00	90.59	267.20	6,513.18	125.64	-2,871.85	2,872.56	2.27
9,064.00	90.43	267.91	6,512.35	121.63	-2,965.76	2,966.44	0.77
9,159.00	88.92	268.31	6,512.88	118.49	-3,060.71	3,061.37	1.64
9,254.00	89.94	268.20	6,513.83	115.60	-3,155.66	3,156.30	1.08
9,348.00	91.48	267.34	6,512.66	111.94	-3,249.58	3,250.19	1.88
9,443.00	90.43	267.48	6,511.08	107.65	-3,344.46	3,345.05	1.12
9,538.00	89.63	268.58	6,511.03	104.39	-3,439.41	3,439.97	1.43
9,632.00	88.67	268.73	6,512.43	102.18	-3,533.37	3,533.92	1.03
9,727.00	90.71	268.31	6,512.94	99.73	-3,628.33	3,628.87	2.19
9,822.00	89.94	268.58	6,512.40	97.15	-3,723.29	3,723.81	0.86
9,917.00	89.20	268.92	6,513.11	95.08	-3,818.27	3,818.77	0.86
10,012.00	87.96	269.03	6,515.47	93.38	-3,913.22	3,913.71	1.31
10,106.00	88.89	268.67	6,518.05	91.49	-4,007.16	4,007.64	1.06
10,201.00	89.82	268.24	6,519.12	88.93	-4,102.12	4,102.58	1.08
10,296.00	92.10	268.69	6,517.53	86.39	-4,197.07	4,197.51	2.45
10,391.00	91.48	268.91	6,514.56	84.40	-4,292.00	4,292.43	0.69
10,486.00	88.89	267.55	6,514.26	81.46	-4,386.95	4,387.36	3.08
10,581.00	89.63	267.45	6,515.48	77.32	-4,481.85	4,482.23	0.79
10,676.00	89.45	268.82	6,516.24	74.23	-4,576.79	4,577.15	1.45
10,771.00	87.63	268.57	6,518.67	72.07	-4,671.73	4,672.08	1.93
10,865.00	87.90	267.96	6,522.33	69.22	-4,765.62	4,765.95	0.71
10,960.00	88.52	267.46	6,525.30	65.43	-4,860.49	4,860.80	0.84
11,054.00	90.15	266.57	6,526.39	60.53	-4,954.35	4,954.63	1.98
11,149.00	91.02	267.13	6,525.42	55.31	-5,049.21	5,049.45	1.09
11,244.00	91.48	267.32	6,523.35	50.71	-5,144.07	5,144.28	0.52
11,338.00	91.57	267.22	6,520.85	46.24	-5,237.93	5,238.11	0.14
11,433.00	90.89	268.05	6,518.81	42.32	-5,332.83	5,332.98	1.13
11,528.00	89.57	269.39	6,518.42	40.20	-5,427.80	5,427.94	1.98
11,623.00	90.99	269.17	6,517.96	39.00	-5,522.79	5,522.92	1.51
11,717.00	90.03	270.29	6,517.12	38.56	-5,616.78	5,616.91	1.57
11,812.00	87.59	270.14	6,519.10	38.92	-5,711.75	5,711.88	2.57
11,847.00	87.69	269.95	6,520.54	38.94	-5,746.72	5,746.85	0.61
Final MWD Survey @ 11847.00ft							
11,910.00	87.69	269.95	6,523.08	38.89	-5,809.67	5,809.80	0.00
Straight Line Proj @ 11910' MD, 6523.08' TVD							

Design Annotations

Measured Depth (usft)	Vertical Depth (usft)	Local Coordinates		Comment
		+N/-S (usft)	+E/-W (usft)	
619.00	618.98	1.86	-2.78	Tie-On to Surface Gyros @ 619.00ft
718.00	717.98	2.21	-3.49	First MWD Survey @ 718.00ft
11,847.00	6,520.54	38.94	-5,746.72	Final MWD Survey @ 11847.00ft
11,910.00	6,523.08	38.89	-5,809.67	Straight Line Proj @ 11910' MD, 6523.08' TVD

Design Report for Wells Ranch AE30-65-1BHNB - Final Surveys

Vertical Section Information

Angle Type	Target	Azimuth (°)	Origin Type	Origin +N/-S (usft)	Origin +E/-W (usft)	Start TVD (usft)
Target	Wells Ranch AE30-65-1BHNB_BHL	270.35	Slot	0.00	0.00	0.00

Survey tool program

From (usft)	To (usft)	Survey/Plan	Survey Tool
235.00	619.00	Surface Gyros	Flexi-Shot
718.00	6,835.00	MWD Surveys - Intermediate	MWD+IFR1+MS_WY
6,913.00	11,847.00	MWD Surveys - Production	MWD+IFR1+MS_WY

Casing Details

Measured Depth (usft)	Vertical Depth (usft)	Name	Casing Diameter (")	Hole Diameter (")
6,879.00	6,491.73	7" Casing @ 6879' MD, 6491.73' TVD	7	8-3/4

Wellbore Targets

Target Name - hit/miss target - Shape	Dip Angle (°)	Dip Dir. (°)	TVD (usft)	+N/-S (usft)	+E/-W (usft)	Northing (usft)	Easting (usft)	Latitude	Longitude
Wells Ranch AE30-65- - actual wellpath hits target center - Point	0.00	0.00	0.00	0.00	0.00	1,410,919.33	3,318,297.74	40.455740	-104.356170
Wells Ranch AE30-65- - actual wellpath hits target center - Polygon	0.00	0.00	0.00	0.00	0.00	1,410,919.33	3,318,297.74	40.455740	-104.356170
Point 1				0.00	3,142.96	-10,734.76	1,414,062.18	3,307,563.38	
Point 2				0.00	-2,172.23	-10,687.98	1,408,747.18	3,307,610.16	
Point 3				0.00	-2,105.92	-5,414.33	1,408,813.49	3,312,883.61	
Point 4				0.00	3,198.57	-5,442.63	1,414,117.78	3,312,855.31	
Point 5				0.00	-2,105.92	-5,414.33	1,408,813.49	3,312,883.61	
Point 6				0.00	-1,942.92	-75.14	1,408,976.48	3,318,222.61	
Point 7				0.00	3,358.68	-46.11	1,414,277.89	3,318,251.64	
Point 8				0.00	3,198.57	-5,442.63	1,414,117.78	3,312,855.31	
Point 9				0.00	3,142.96	-10,734.76	1,414,062.18	3,307,563.38	
Wells Ranch AE30-65- - actual wellpath hits target center - Polygon	0.00	0.00	0.00	0.00	0.00	1,410,919.33	3,318,297.74	40.455740	-104.356170
Point 1				0.00	2,682.95	-10,274.74	1,413,602.18	3,308,023.38	
Point 2				0.00	-1,712.22	-10,227.96	1,409,207.18	3,308,070.16	
Point 3				0.00	-1,645.90	-5,874.35	1,409,273.49	3,312,423.61	
Point 4				0.00	2,738.55	-5,902.65	1,413,657.78	3,312,395.31	
Point 5				0.00	2,682.95	-10,274.74	1,413,602.18	3,308,023.38	
Wells Ranch AE30-65- - actual wellpath hits target center - Polygon	0.00	0.00	0.00	0.00	0.00	1,410,919.33	3,318,297.74	40.455740	-104.356170
Point 1				0.00	2,738.55	-4,982.62	1,413,657.78	3,313,315.31	
Point 2				0.00	-1,645.90	-4,954.32	1,409,273.49	3,313,343.61	
Point 3				0.00	-1,482.91	-535.15	1,409,436.48	3,317,762.61	
Point 4				0.00	2,898.66	-506.12	1,413,817.89	3,317,791.64	
Point 5				0.00	2,738.55	-4,982.62	1,413,657.78	3,313,315.31	
Wells Ranch AE30-65- - actual wellpath misses target center by 5.23usft at 11910.00usft MD (6523.08 TVD, 38.89 N, -5809.67 E) - Point	0.00	0.00	6,520.14	35.03	-5,811.64	1,410,954.36	3,312,486.32	40.456040	-104.377050

Design Report for Wells Ranch AE30-65-1BHNB - Final Surveys

Directional Difficulty Index

Average Dogleg over Survey:	1.81 °/100usft	Maximum Dogleg over Survey:	21.39 °/100usft at 6,424.00 usft
Net Tortousity applicable to Plans:	0.92 °/100usft	Directional Difficulty Index:	6.370

Audit Info

**North Reference Sheet for Sec. 29-T6N-R62W (Wells Ranch AE29-32-A PAD) -
Wells Ranch AE30-65-1BHNB**

All data is in US Feet unless otherwise stated. Directions and Coordinates are relative to Grid North Reference.

Vertical Depths are relative to RKB=30ft @ 4787.00usft (H&P 321). Northing and Easting are relative to Wells Ranch AE30-65-1BHNB

Coordinate System is US State Plane 1983, Colorado Northern Zone using datum North American Datum 1983, ellipsoid GRS 1980

Projection method is Lambert Conformal Conic (2 parallel)

Central Meridian is -105.500000°, Longitude Origin:0.000000°, Latitude Origin:40.783333°

False Easting: 3,000,000.00usft, False Northing: 1,000,000.00usft, Scale Reduction: 0.99996323

Grid Coordinates of Well: 1,410,919.33 usft N, 3,318,297.74 usft E

Geographical Coordinates of Well: 40° 27' 20.66" N, 104° 21' 22.21" W

Grid Convergence at Surface is: 0.74°

Based upon Minimum Curvature type calculations, at a Measured Depth of 11,910.00usft
the Bottom Hole Displacement is 5,809.80usft in the Direction of 270.38° (Grid).

Magnetic Convergence at surface is: -7.57° (2 April 2014, , BGGM2013)

