

The Road to Excellence Starts with Safety

Sold To #: 329417	Ship To #: 2933515	Quote #:	Sales Order #: 9595764
Customer: OVERLAND RESOURCES LLC		Customer Rep: Jones, Tim	
Well Name: Handke		Well #: #4	API/UWI #: 05-001-09745
Field: SONAR	City (SAP): AURORA	County/Parish: Adams	State: Colorado
Contractor: Energy		Rig/Platform Name/Num: Energy 8	
Job Purpose: Cement Production Casing			
Well Type: Development Well		Job Type: Cement Production Casing	
Sales Person: AARON, WESLEY		Srv Supervisor: WHEELER, JUSTIN	MBU ID Emp #: 196470

Job Personnel

HES Emp Name	Exp Hrs	Emp #	HES Emp Name	Exp Hrs	Emp #	HES Emp Name	Exp Hrs	Emp #
BARNES, BRIAN L	8	485204	HOLLOWAY, DUSTIN Craig	8	504032	IPSON, TIMOTHY J	8	485018
WHEELER, JUSTIN W	8	196470						

Equipment

HES Unit #	Distance-1 way	HES Unit #	Distance-1 way	HES Unit #	Distance-1 way	HES Unit #	Distance-1 way
10025030	33 mile	11064046	33 mile	11542778	33 mile	11562562	33 mile
11605599	33 mile						

Job Hours

Date	On Location Hours	Operating Hours	Date	On Location Hours	Operating Hours	Date	On Location Hours	Operating Hours
6-16-12	8	2.5						

TOTAL Total is the sum of each column separately

Job

Job Times

Formation Name	Top	Bottom	Called Out	Date	Time	Time Zone
Formation Depth (MD)			On Location	15 - Jun - 2012	22:30	MST
Form Type	BHST		Job Started	16 - Jun - 2012	02:00	MST
Job depth MD	8295. ft	Job Depth TVD	Job Started	16 - Jun - 2012	07:43	MST
Water Depth		Wk Ht Above Floor	Job Completed	16 - Jun - 2012	08:56	MST
Perforation Depth (MD)	From	To	Departed Loc	16 - Jun - 2012	10:00	MST

Well Data

Description	New / Used	Max pressure psig	Size in	ID in	Weight lbm/ft	Thread	Grade	Top MD ft	Bottom MD ft	Top TVD ft	Bottom TVD ft
7 7/8" Open Hole Section				7.875				1760.	8295.		
4 1/2" Production Casing	Unknown		4.5	4.	11.6				8295.		
8 5/8" Surface Casing	Unknown		8.625	8.097	24.				1760.		

Sales/Rental/3rd Party (HES)

Description	Qty	Qty uom	Depth	Supplier
SHOE,FLT,4-1/2 8RD,2-3/4 SSII	1	EA		
CLR,FLT,4-1/2 8RD,9.5-13.5PPF,2-3/4	1	EA		
CENTRALIZER ASSY - API - 4-1/2 CSG X	20	EA		
CLAMP - LIMIT - 4-1/2 - HINGED -	1	EA		
PLUG,CMTG,TOP,4 1/2,HWE,3.65 MIN/4.14 MA	1	EA		
KIT,HALL WELD-A	1	EA		
BSKT,CEM,4 1/2 CSG X 6 1/4,8 3/4 H	2	EA		

Tools and Accessories

Type	Size	Qty	Make	Depth	Type	Size	Qty	Make	Depth	Type	Size	Qty	Make
Guide Shoe					Packer					Top Plug			
Float Shoe					Bridge Plug					Bottom Plug			

Float Collar					Retainer					SSR plug set			
Insert Float										Plug Container			
Stage Tool										Centralizers			
Miscellaneous Materials													
Gelling Agt		Conc		Surfactant		Conc		Acid Type		Qty		Conc	%
Treatment Fld		Conc		Inhibitor		Conc		Sand Type		Size		Qty	
Fluid Data													
Stage/Plug #: 1													
Fluid #	Stage Type	Fluid Name			Qty	Qty uom	Mixing Density lbm/gal	Yield ft ³ /sk	Mix Fluid Gal/sk	Rate bbl/min	Total Mix Fluid Gal/sk		
1	ClayWeb Water Spacer				20.00	bbl	8.33	.0	.0	.0			
2	MUD FLUSH III	MUD FLUSH III - SBM (528788)			24.00	bbl	8.4	.0	.0	.0			
3	Clean Spacer III				20.00	bbl	10.	5.03	32.93	.0			
4	ClayWeb Water Spacer				10.00	bbl	8.33	.0	.0	.0			
5	FracCem B2	FRACCEM (TM) SYSTEM (452963)			180.0	sacks	13.5	1.74	8.29		8.29		
8.289 Gal		FRESH WATER											
Calculated Values				Pressures				Volumes					
Displacement	128.6	Shut In: Instant	1000	Lost Returns	No	Cement Slurry	86.8	Pad					
Top Of Cement		5 Min		Cement Returns	No	Actual Displacement	128.6	Treatment					
Frac Gradient		15 Min		Spacers	74 bbls	Load and Breakdown		Total Job					
Rates													
Circulating		Mixing		Displacement		Avg. Job							
Cement Left In Pipe	Amount	0 ft	Reason	Shoe Joint									
Frac Ring # 1 @	ID	Frac ring # 2 @	ID	Frac Ring # 3 @	ID	Frac Ring # 4 @	ID						
The Information Stated Herein Is Correct				Customer Representative Signature									

The Road to Excellence Starts with Safety

Sold To #: 329417		Ship To #: 2933515		Quote #:		Sales Order #: 9595764	
Customer: OVERLAND RESOURCES LLC				Customer Rep: Jones, Tim			
Well Name: Handke			Well #: #4		API/UWI #: 05-001-09745		
Field: SONAR		City (SAP): AURORA		County/Parish: Adams		State: Colorado	
Legal Description:							
Lat: N 0 deg. OR N 0 deg. 0 min. 0 secs.				Long: E 0 deg. OR E 0 deg. 0 min. 0 secs.			
Contractor: Energy			Rig/Platform Name/Num: Energy 8				
Job Purpose: Cement Production Casing					Ticket Amount:		
Well Type: Development Well			Job Type: Cement Production Casing				
Sales Person: AARON, WESLEY			Srvc Supervisor: WHEELER, JUSTIN			MBU ID Emp #: 196470	

Activity Description	Date/Time	Cht #	Rate bbl/min	Volume bbl		Pressure psig		Comments
				Stage	Total	Tubing	Casing	
Depart from Service Center or Other Site	06/16/2012 01:00							
Arrive At Loc	06/16/2012 02:00							
Safety Meeting - Pre Rig-Up	06/16/2012 07:00							1 Top Plug Pre-Loaded In Plug Container (Witnessed By Customer Rep.)
Test Lines	06/16/2012 07:44							Pressure Test Lines to 3500 PSI (Water Provided By Rig, Tested Ok for Mixing Cement)
Pump Spacer	06/16/2012 07:48		2	10			260.0	Pump ClayWeb Water Spacer
Pump Spacer	06/16/2012 07:56		2	24			260.0	Pump 24 bbls Mud Flush
Pump Spacer	06/16/2012 08:03		4	20			405.0	Mix and Pump 20 bbls Clean Spacer @ 10 lb/gal (Density Verified By Pressurized Scales)
Pump Spacer	06/16/2012 08:07		4	20			390.0	Pump ClayWeb Water Spacer
Pump Cement	06/16/2012 08:12		3	86.8			350.0	Mix and Pump 280 sks FracCem Cement @ 13.5 lb/gal (Density Verified by Pressurized Scales)
Clean Lines	06/16/2012 08:28			10				Wash Pumps and Lines to Pit
Drop Top Plug	06/16/2012 08:31							Shut-Down, Drop Top Plug
Pump Displacement - Start	06/16/2012 08:33		8	0			105.0	Pump ClayWeb Water Displacement
Pump Displacement - End	06/16/2012 08:52		3	128.6			1000.0	Good Returns Throughout Job

Cementing Job Log

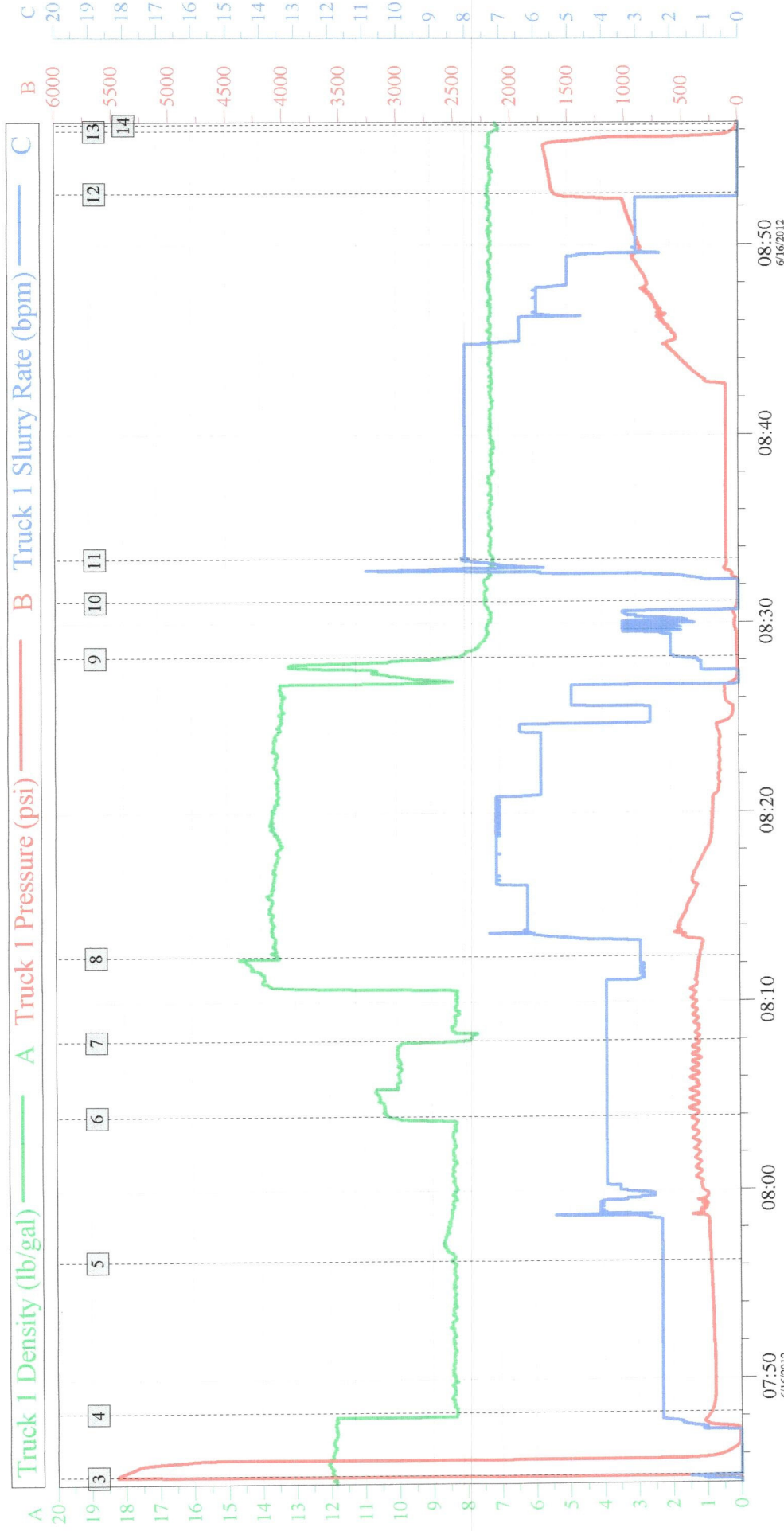
Activity Description	Date/Time	Cht #	Rate bbl/ min	Volume bbl		Pressure psig		Comments
				Stage	Total	Tubing	Casing	
Bump Plug	06/16/2012 08:52		3	128.6			1605. 0	
Check Floats	06/16/2012 08:55							Floats Holding
End Job	06/16/2012 08:56							
Safety Meeting - Pre Rig- Down	06/16/2012 09:30							Wet and Dry Samples of Cement Left on Location
Safety Meeting - Departing Location	06/16/2012 10:00							

Field Ticket

Field Ticket Number: 9595764		Field Ticket Date: Saturday, June 16, 2012	
Bill To: OVERLAND RESOURCES LLC 1376 S PERRY PARK RD SEDALIA, CO 80135		Job Name: Handke Order Type: Streamline Order (ZOH) Well Name: Handke #4 Company Code: 1100 Customer PO No.: NA Shipping Point: Brighton, CO, USA Sales Office: Rocky Mountains BD Well Type: Gas Well Category: Development	
Ship To: OVERLAND RESOURCES LLC Handke, #4 2933515 S10 T3S R64W AURORA, CO 80019			

Material	Description	QTY	UOM	Base Amt	Unit Amt	Gross Amount	Discount	Net Amount
7523	CMT PRODUCTION CASING BOM	1	JOB	0.00	0.00	0.00		0.00
16091	ZI - PUMPING CHARGE	1	EA	0.00	10,344.00	10,344.00	62%	3,930.72
	DEPTH	8295						
	FEET/METERS (FT/M)		FT					
432904	CMT, ROCKIES SG SETUP	1	EA			10,454.00	56.43%	4,555.32
432905	CMT, ROCKIES SG MILEAGE	66	MI			2,108.70	60.35%	836.08
	Number of Units	1						
432906	CMT, ROCKIES SG DELIVERY	16.11	TNM			4,248.51	60.68%	1,670.46
	NUMBER OF TONS	16.11						
719269	SBM, CMT CleanSpacer III	20	BBL	0.00	271.13	5,422.60	62%	2,060.59
528788	MUD FLUSH III	24	BBL	0.00	94.45	2,266.80	62%	861.38
452963	FRACCEM (TM) SYSTEM	280	SK			19,076.11	62.0%	7,248.93
101985045	CHEM, CLA-WEB - TOTE	8	GAL	0.00	474.30	3,794.40	62%	1,441.87
100004879	SHOE,FLT,4-1/2 8RD,2-3/4 SSII	1	EA	0.00	599.00	599.00	60%	239.60
100004752	CLR,FLT,4-1/2 8RD,9.5-13.5PPF,2-3/4	1	EA	0.00	700.00	700.00	60%	280.00
100004473	CENTRALIZER ASSY - API - 4-1/2 CSG X	20	EA	0.00	126.00	2,520.00	60%	1,008.00
100004622	CLAMP - LIMIT - 4-1/2 - HINGED -	1	EA	0.00	44.20	44.20	60%	17.68
101241019	PLUG,CMTG,TOP,4 1/2,HWE,3.65 MIN/4.14 MA	1	EA	0.00	186.00	186.00	60%	74.40
100005045	KIT,HALL WELD-A	1	EA	0.00	74.30	74.30	60%	29.72

Overland - Handke #4 4 1/2" Production Casing



Global Event Log					
Intersection		TIP	TISR	Intersection	
3	Test Lines	07:44:52	5478	0.000	4
	Pump Clean Spacer	08:03:56	404.9	3.900	7
9	Clean Lines	08:28:12	11.00	1.900	10
	Bump Plug	08:52:41	1605	0.000	13
Intersection		Intersection		Intersection	
		07:48:13	261.1	2.300	5
		08:07:56	389.9	3.900	8
		08:31:08	6.000	0.000	11
		08:55:56	58.89	0.000	14
		07:56:15	261.3	2.300	
		08:12:23	352.6	2.900	
		08:33:26	106.0	7.900	
		08:56:16	15.45	0.000	

Overland Resources
Handke #4
S.O. 9595764

Pressure Test Lines to 3000 PSI

Pump 20 bbls ClayWeb Water

Pump 24 bbls Mud Flush

Mix and Pump 20 bbls Clean Spacer @ 10 lb/gal (5.03 yield, 32.93 gal/sk)

Pump 10 bbls ClayWeb Water

Mix and Pump 86.8 bbls Cement @ 13.5 lb/gal (1.74 yield, 8.29 gal/sk) (280 sks)

Shut-Down, Drop Top Plug

Wash Pumps and Lines to Pit

Pump 128.6 bbls ClayWeb Water Displacement

Land Plug @ +/- 815 PSI (+500 Over)

300 bbls H2O for Job