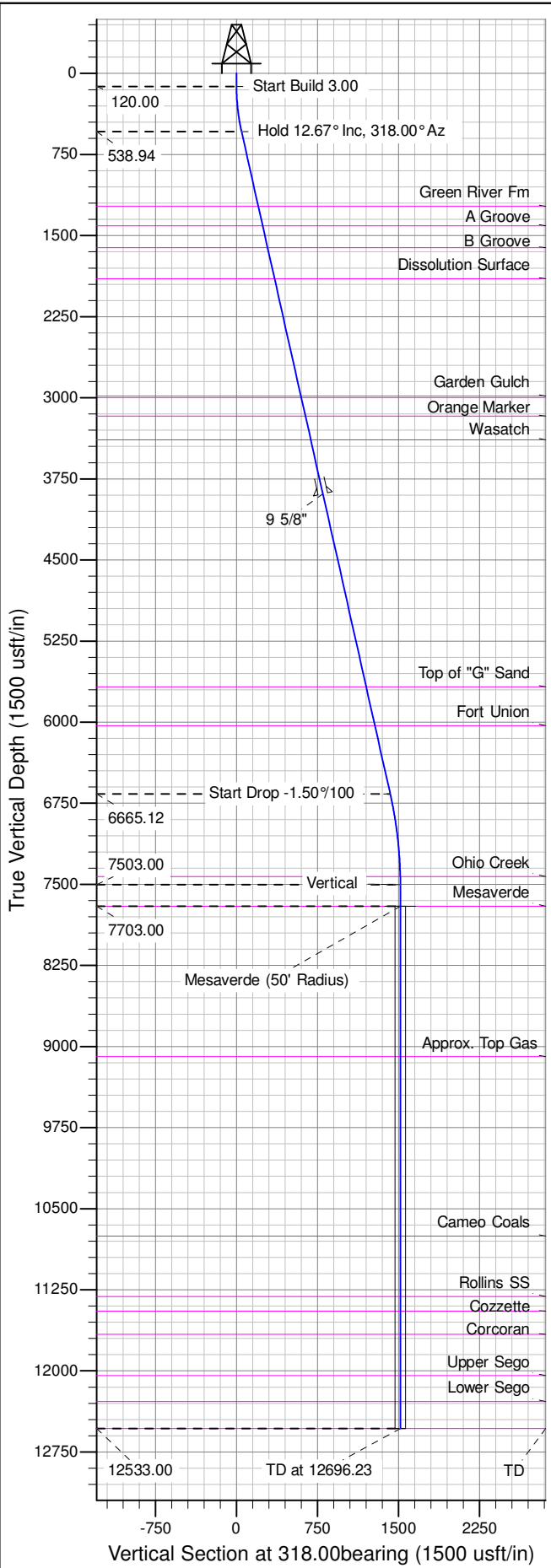
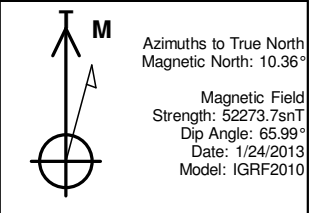
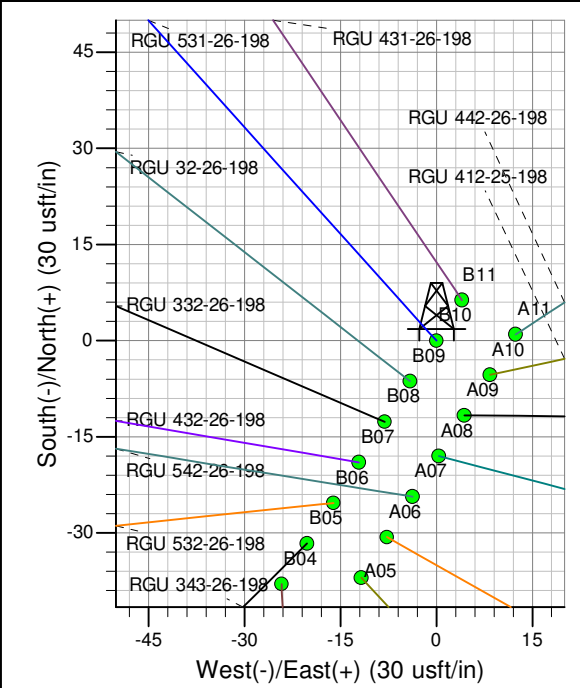
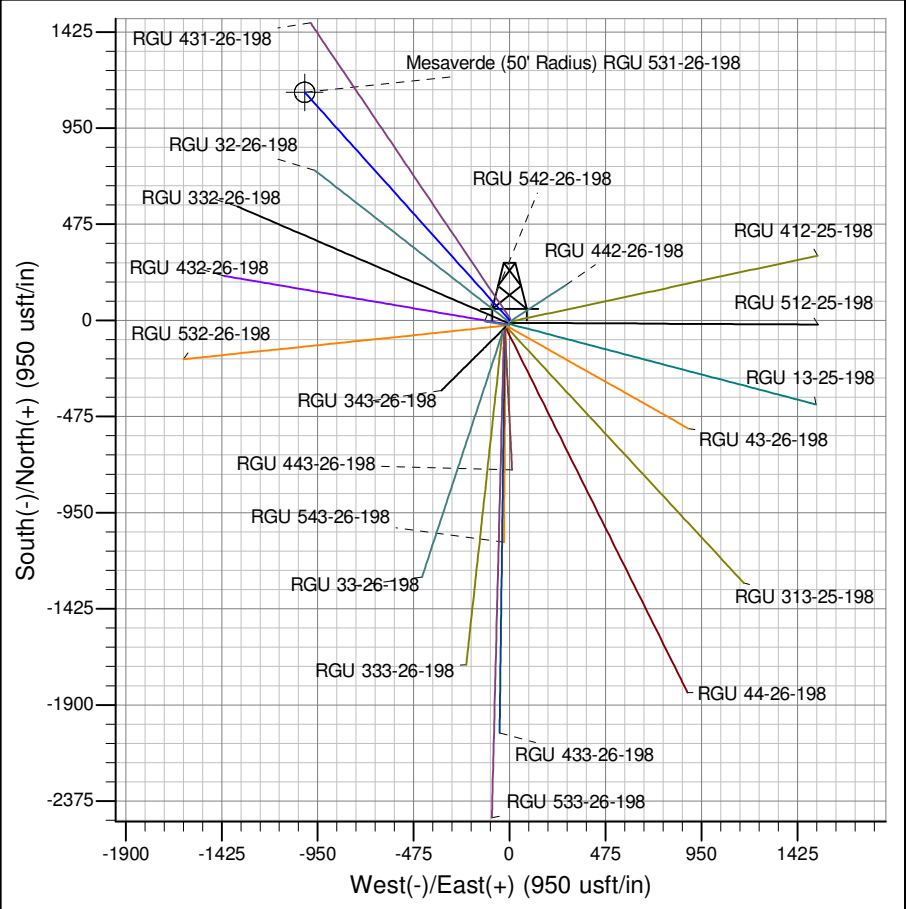




Well Name: RGU 531-26-198  
Surface Location: RGU 42-26-198  
North American Datum 1983 , US State Plane 1983 , Colorado Central Zone  
Ground Elevation: 6622.00  
+N/-S +E/-W Northing Easting Latitude Longitude Slot  
0.00 0.00 1778115.70 2199611.50 39.93522 -108.35452 B10  
KELLY BUSHING @ 6643.00usft (Cyclone 29 (21' RKB) kjs)



ANNOTATIONS									
TVD	MD	Inc	Azi	+N/-S	+E/-W	Vsect	Departure	Annotation	
120.00	120.00	0.00	0.00	0.00	0.00	0.00	0.00	Start Build 3.00	
538.94	542.37	12.67	318.00	34.57	-31.12	46.51	46.51	Hold 12.67° Inc, 318.00° Az	
6665.12	6821.49	12.67	318.00	1058.13	-952.77	1423.87	1423.87	Start Drop -1.50%/100	
7503.00	7666.23	0.00	0.00	1127.27	-1015.02	1516.90	1516.90	Vertical	
7703.00	7866.23	0.00	0.00	1127.27	-1015.02	1516.90	1516.90	Mesaverde	
12533.00	12696.23	0.00	0.00	1127.27	-1015.02	1516.90	1516.90	TD at 12696.23	



Project: RG 26-01S-098W  
Site: RGU 42-26-198  
Well: RGU 531-26-198  
Design #2 12Aug14 mab