

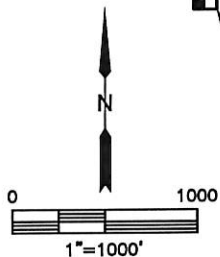
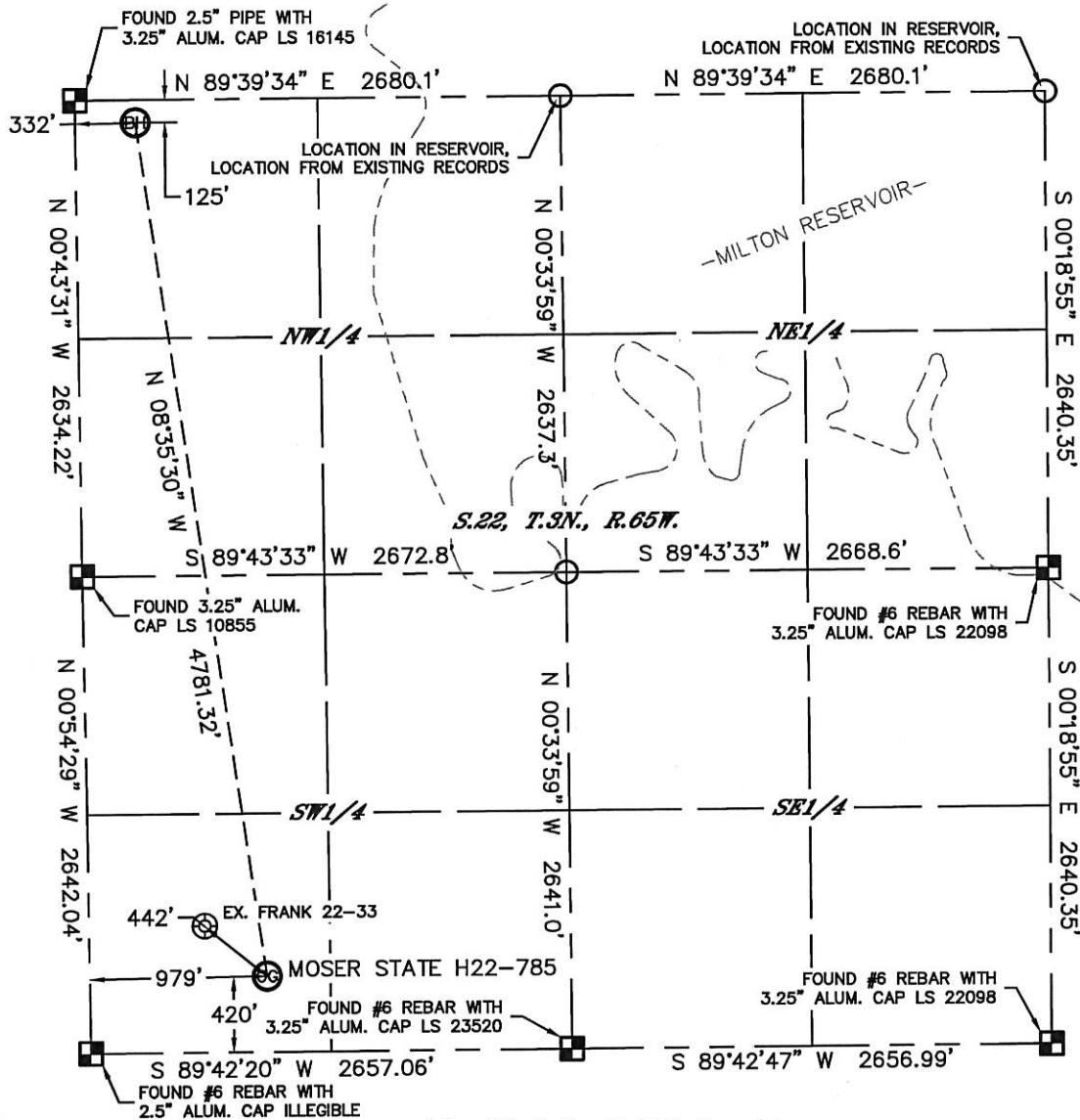


Lat40°, Inc. 1635 Foxtrail Drive, Suite 325 Loveland, CO 970-776-3321

WELL LOCATION CERTIFICATE

THIS MAP DOES NOT REPRESENT A BOUNDARY SURVEY

SECTION: 22
TOWNSHIP: 3N
RANGE: 65W



In accordance with a request from Mike Rodine with Noble Energy Inc. Lat40°, Inc. has determined the surface location of the MOSER STATE H22-785 to be 420' from the SOUTH line and 979' from the WEST line and the bottom hole to be 125' from the NORTH line and 332' from the WEST line as measured at right angles from the section lines of Section 22, Township 3 North, Range 65 West of the Sixth Principal Meridian, County of Weld, State of Colorado.

I hereby state that this Well Location Certificate was prepared by me, or under my direct supervision, that the fieldwork was completed on 3/13/2014, for and on behalf of Noble Energy Inc. That this is not a Land Survey Plat or an Improvement Survey Plat, and that it is not to be relied upon for establishment of fence, building, or other future Improvement lines.

NOTE:

- 1) Bearings shown are Grid Bearings of the Colorado State Plane Coordinate System, North Zone, North American Datum 1983/2007. The lined dimensions as contained herein are based upon the "U.S. Survey Foot."
 - 2) Ground elevations are based on an observed GPS elevation (NAVD 1988 DATUM).
 - 3) IMPROVEMENTS: See LOCATION DRAWING for all visible improvements within 500' of disturbed area.
 - 4) SURFACE USE: CROP LAND
 - 5) INSTRUMENT OPERATOR: BRIAN ROTTINGHAUS
 - 6) NEAREST EXISTING WELL: FRANK 22-33, 442' NW
- NEAREST CULTURAL ITEMS:
BUILDING: 1322' SW
BUILDING UNIT: 1322' SW
HIGH OCCUPANCY BUILDING UNIT: 5280'+
DESIGNATED OUTSIDE ACTIVITY AREA: 5280'+
PUBLIC ROAD: 408' S (CR 30)
ABOVEGROUND UTILITY: 360' SE
RAILROAD: 5280'+
PROPERTY LINE: 420' S

SURFACE LOCATION

LAT: 40.20483°N
LONG: 104.65577°W
PDOP: 1.8
ELEV: 4812'
1/4, 1/4: SWSW

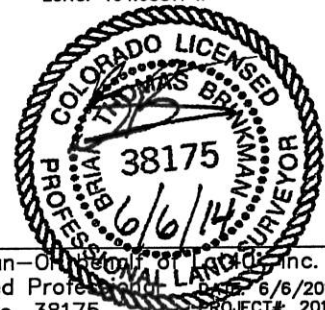
BOTTOM HOLE

LAT: 40.21783°N
LONG: 104.65817°W

LEGEND

- = ALIQUOT MONUMENT AS DESCRIBED
- = CALCULATED POSITION

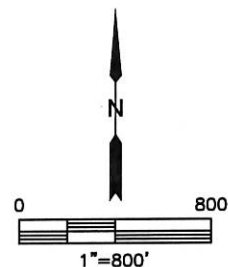
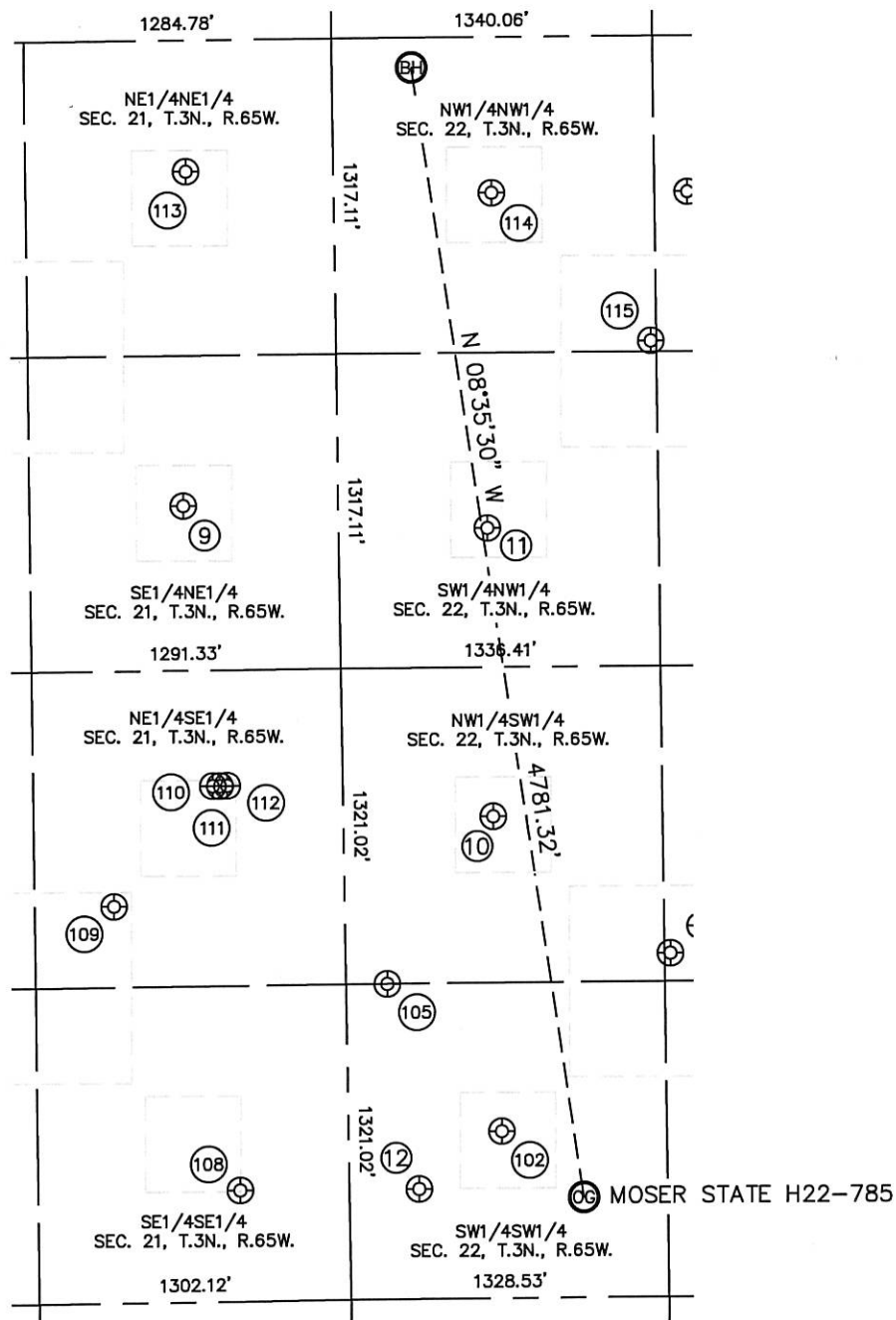
Brian T. Brinkman—Owner of Lat40°, Inc.
Colorado Licensed Professional Land Surveyor No. 38175
PROJECT#: 2013178



SITE SKETCH

MOSER STATE H22-785

SECTION: 22
TOWNSHIP: 3N
RANGE: 65W



SHEET 1 OF 2

DATE: 6/6/2014
PROJECT#: 2013178



Lat40°, Inc. 1635 Foxtrail Drive, Suite 325 Loveland, CO 970-776-3321

SITE SKETCH

MOSER STATE H22-785

SECTION: 22
TOWNSHIP: 3N
RANGE: 65W

WELL NO.	WELL NAME	SHL FOOTAGE				SHL LAT°	SHL LONG°	PDOP	ELEV (FT.)	1/4/1/4
9	FRANK UPRR 42-21	1946	FNL	648	FEL	40.21283	-104.66166	2.4	4817	SENE
10	ROBERT C NICE 22-1	2017	FSL	626	FWL	40.20922	-104.65707	2.5	4808	NWSW
11	MD RADKE 22-1	2053	FNL	621	FWL	40.21253	-104.65711	2.7	4812	SWNW
12	MOSER H27-79HN	461	FSL	291	FWL	40.20495	-104.65824	3.0	4813	SWSW
102	FRANK 22-33	699	FSL	640	FWL	40.20560	-104.65699	2.1	4812	SWSW
105	MOSER PC H22-33	1320	FSL	171	FWL	40.20731	-104.65869	1.4	4811	SWSW
108	FRANK H21-16	465	FSL	457	FEL	40.20497	-104.66091	1.5	4813	SESE
109	FRANK 43-21 #4	1660	FSL	964	FEL	40.20824	-104.66276	2.1	4818	NESE
110	MOSER 24-21	2158	FSL	543	FEL	40.20961	-104.66126	2.1	4813	NESE
111	MOSER 40-21	2159	FSL	514	FEL	40.20961	-104.66116	1.5	4813	NESE
112	MOSER 9-21	2159	FSL	483	FEL	40.20962	-104.66105	1.5	4813	NESE
113	FRANK 41-21	547	FNL	617	FEL	40.21667	-104.66156	2.0	4822	NENE
114	SEYMOUR MENDELL 22-1	651	FNL	659	FWL	40.21638	-104.65699	2.0	4810	NWNW
115	FRANK 22-25	1273	FNL	1314	FWL	40.21467	-104.65464	2.8	4808	NWNW