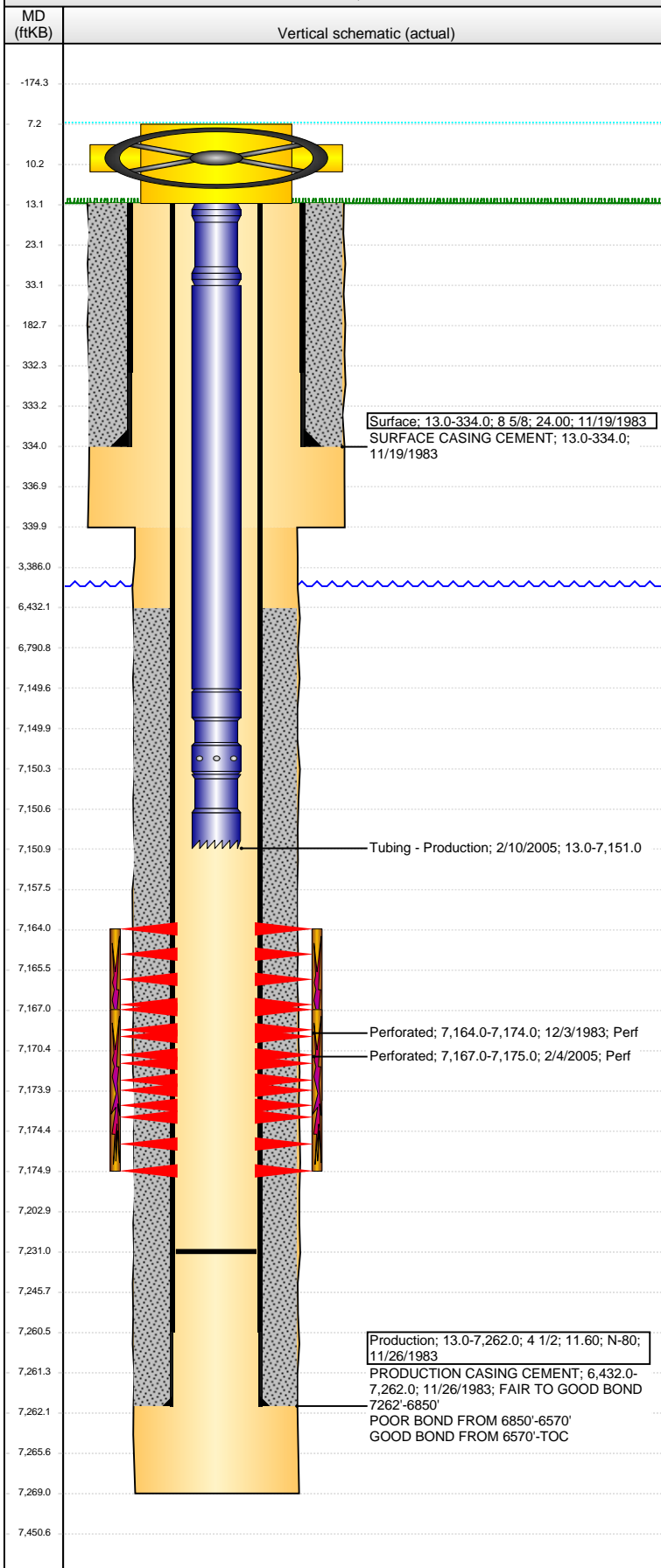


Well Name: MILNE 01

VERTICAL - ORIGINAL HOLE, 10/2/2014 12:48:05 PM



Well Header

API 05-123-11501	Business Unit DJ BASIN	District 15	Well Config VERTICAL
Original KB Elevation (ft) 4,781.00	KB - GL / MSL (ftKB) 13.00	Spud Date 11/19/1983	P & A Date

Comment
NO RECORDS FROM ORIGINAL DRILL AND COMPLETE IN GREELEY WELL FILE. INFO GOTTEN FROM COMPLETION REPORT AND WBD ON STATE WEBSITE.

Directions To Well

Congressional Location

Quarter 1	Quarter 2	Quarter 3	Quarter 4	Section	Township	Twnshp N...	Range	Rng E/W Dir
		SE	NW	18	6	N	65	W

Bottom Hole Location

North-South Distance (ft)	From N or S Line	East-West Distance (ft)	From E or W Line

Plug Back Total Depths

Date	Depth (ftKB)	Method	Com
11/25/1983	7,259.0	CASING TALLY	
11/30/1983	7,213.0	CASED HOLE LOG	DEPTH LOGGER ON CBL
2/10/2005	7,231.0	TAG	CLEANOUT

Wellbore Sections

Section Des	Size (in)	Act Top, MD (ftKB)	Act Btm, MD (ftKB)
SURFACE	12 1/4	13.0	340.0
PRODUCTION	7 7/8	340.0	7,269.0

Zone Statuses

Zone Name	Status Date	Status	Job
CODELL	12/10/1983	PR	DRILLING/COMPLETION - ORIGINAL, 11/19/1983 00:00
CODELL	2/5/2005	PR	RE-FRAC, 1/27/2005 00:00

Casing Strings

Surface, 334.0ftKB

Casing Description	Run Date	OD (in)	Wt/Len (l...)	Grade	Top, MD (ft...)	MD (ftKB)
Surface	11/19/1983	8 5/8	24.00		13.0	334.0

Production, 7,262.0ftKB

Casing Description	Run Date	OD (in)	Wt/Len (l...)	Grade	Top, MD (ft...)	MD (ftKB)
Production	11/26/1983	4 1/2	11.60	N-80	13.0	7,262.0

Cement

Description	Top Depth (ftKB)	Bottom Depth (ftKB)
SURFACE CASING CEMENT	13.0	334.0

Description	Top Depth (ftKB)	Bottom Depth (ftKB)
PRODUCTION CASING CEMENT	6,432.0	7,262.0

Tubing Components

Item Des	OD (in)	Wt (lb/ft)	Grade	Jts	Len (ft)	Btm (ftKB)	Btm (TVD) (ftKB)
Pup Joint	2 3/8	4.70	J-55	2	20.00	33.0	
Tubing	2 3/8	4.70	J-55	217	7,116.50	7,149.5	
Seal Nipple	2 3/8				0.80	7,150.3	
Notched collar	2 3/8			1	0.70	7,151.0	

Perforation Data

Zone	Bnch/St g	Entered Shot Total	Top (ftKB)	Btm (ftKB)	Date
CODELL, ORIGINAL HOLE		30	7,164.00	7,174.00	12/3/1983
CODELL, ORIGINAL HOLE		32	7,167.00	7,175.00	2/4/2005

Stimulations & Treatments

Date	Zone	Primary Job Type
12/3/1983	CODELL, ORIGINAL HOLE	DRILLING/COMPLETION - ORIGINAL
Technical Result	Tech Result Details	Tech Result Note

Comment

Date	Zone	Primary Job Type
2/4/2005	CODELL, ORIGINAL HOLE	RE-FRAC
Technical Result	Tech Result Details	Tech Result Note

Comment

Other In Hole

Run Date	Des	OD (in)	Top (ftKB)	Btm (ftKB)

Well Name: MILNE 01

VERTICAL - ORIGINAL HOLE, 10/2/2014 12:48:08 PM

Logs

