

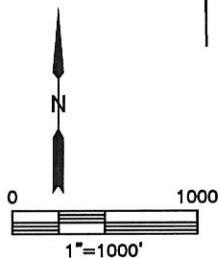
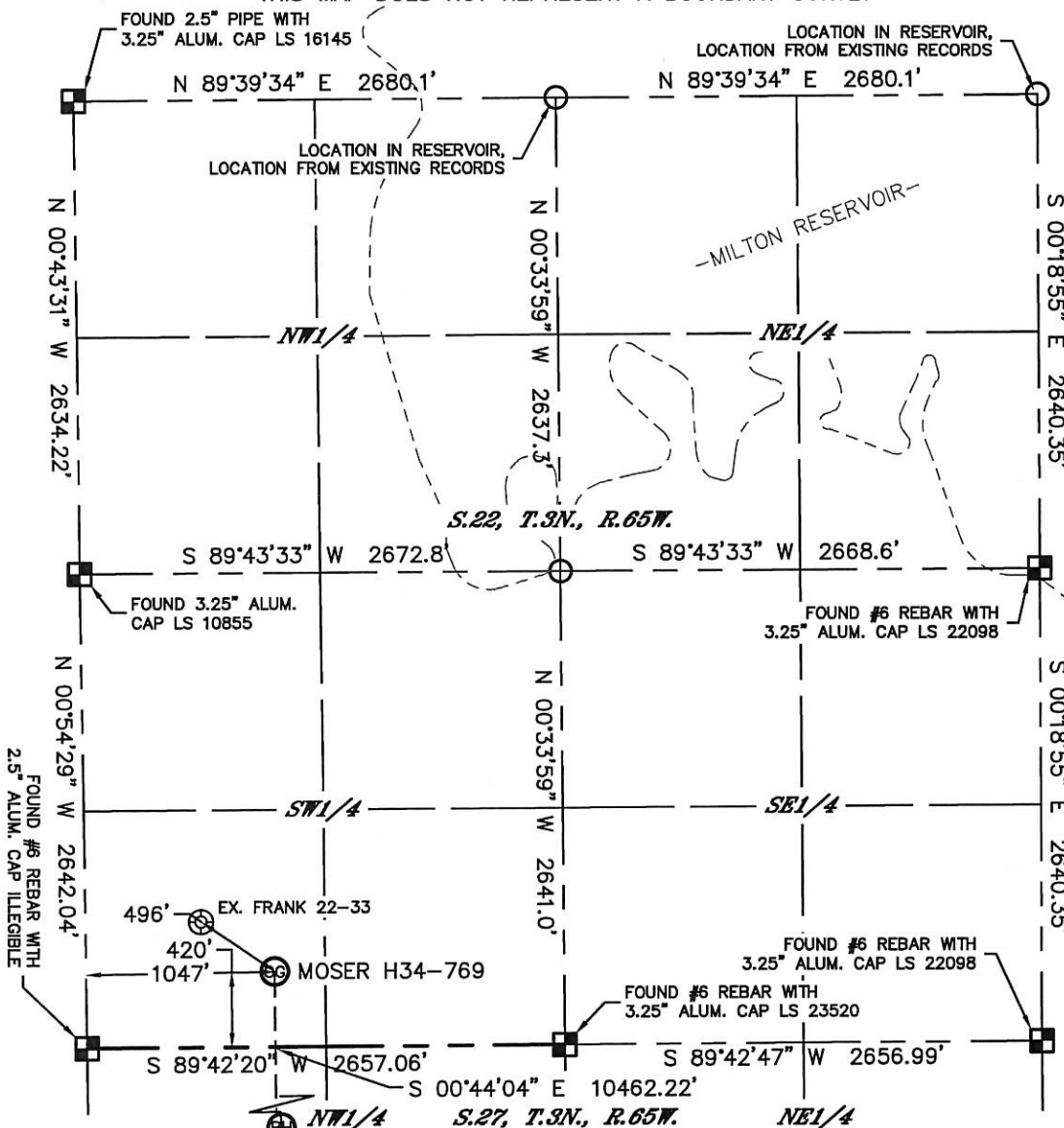


Lat40°, Inc. 1635 Foxtrail Drive, Suite 325 Loveland, CO 970-776-3321

WELL LOCATION CERTIFICATE

SECTION: 22
TOWNSHIP: 3N
RANGE: 65W

THIS MAP DOES NOT REPRESENT A BOUNDARY SURVEY



In accordance with a request from Mike Rodine with Noble Energy Inc. Lat40°, Inc. has determined the surface location of the MOSER H34-769 to be 420' from the SOUTH line and 1047' from the WEST line as measured at right angles from the section lines of Section 22, Township 3 North, Range 65 West and the bottom hole to be 538' from the SOUTH line and 1045' from the WEST line as measured at right angles from the section lines of Section 34, Township 3 North, Range 65 West of the Sixth Principal Meridian, County of Weld, State of Colorado.

I hereby state that this Well Location Certificate was prepared by me, or under my direct supervision, that the fieldwork was completed on 3/13/2014, for and on behalf of Noble Energy Inc. That this is not a Land Survey Plat or an Improvement Survey Plat, and that it is not to be relied upon for establishment of fence, building, or other future improvement lines.

NOTE:

- 1) Bearings shown are Grid Bearings of the Colorado State Plane Coordinate System, North Zone, North American Datum 1983/2007. The lineal dimensions as contained herein are based upon the "U.S. Survey Foot."
 - 2) Ground elevations are based on an observed GPS elevation (NAVD 1988 DATUM).
 - 3) IMPROVEMENTS: See LOCATION DRAWING for all visible improvements within 500' of disturbed area.
 - 4) SURFACE USE: CROP LAND
 - 5) INSTRUMENT OPERATOR: BRIAN ROTTINGHAUS
 - 6) NEAREST EXISTING WELL: FRANK 22-33, 496' NW
- NEAREST CULTURAL ITEMS:
BUILDING: 1388' NE
BUILDING UNIT: 1388' NE
HIGH OCCUPANCY BUILDING UNIT: 5280'+
DESIGNATED OUTSIDE ACTIVITY AREA: 5280'+
PUBLIC ROAD: 408' S (CR 30)
ABOVEGROUND UTILITY: 362' SW
RAILROAD: 5280'+
PROPERTY LINE: 420' S

SURFACE LOCATION
LAT: 40.20483°N
LONG: 104.65553°W
PDOP: 1.8
ELEV: 4812'
1/4, 1/4: SWSW

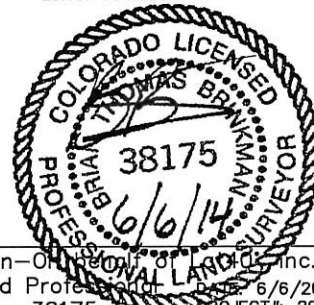
BOTTOM HOLE
LAT: 40.17612°N
LONG: 104.65541°W

LEGEND

- = ALIQUOT MONUMENT AS DESCRIBED
- = CALCULATED POSITION

SHEET 1 OF 3

Brian T. Brinkman—Owner, Lat40°, Inc.
Colorado Licensed Professional Land Surveyor
Land Surveyor No. 38175
DATE: 6/6/2014
PROJECT#: 2013178



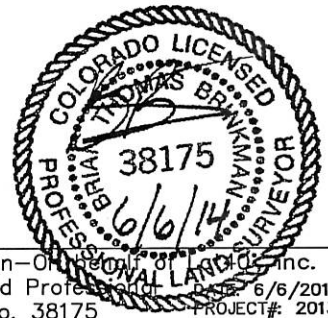
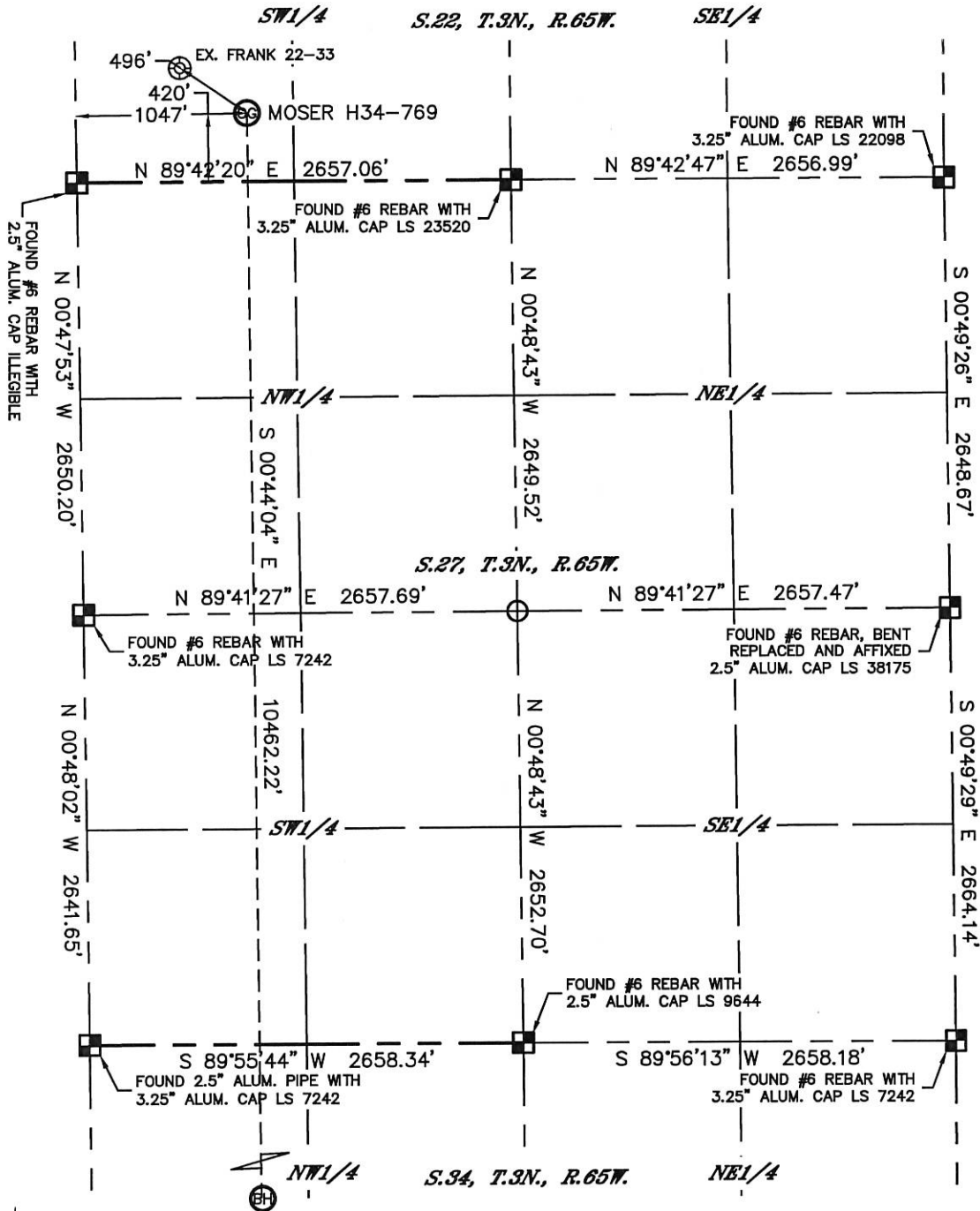


Lat40°, Inc. 1635 Foxtrail Drive, Suite 325 Loveland, CO 970-776-3321

WELL LOCATION CERTIFICATE

THIS MAP DOES NOT REPRESENT A BOUNDARY SURVEY

SECTION: 22
TOWNSHIP: 3N
RANGE: 65W



SHEET 2 OF 3

Brian T. Brinkman—Owner of Lat40°, Inc.
Colorado Licensed Professional Land Surveyor
Land Surveyor No. 38175
DATE: 6/6/2014
PROJECT#: 2013178



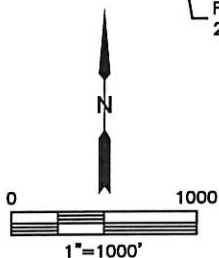
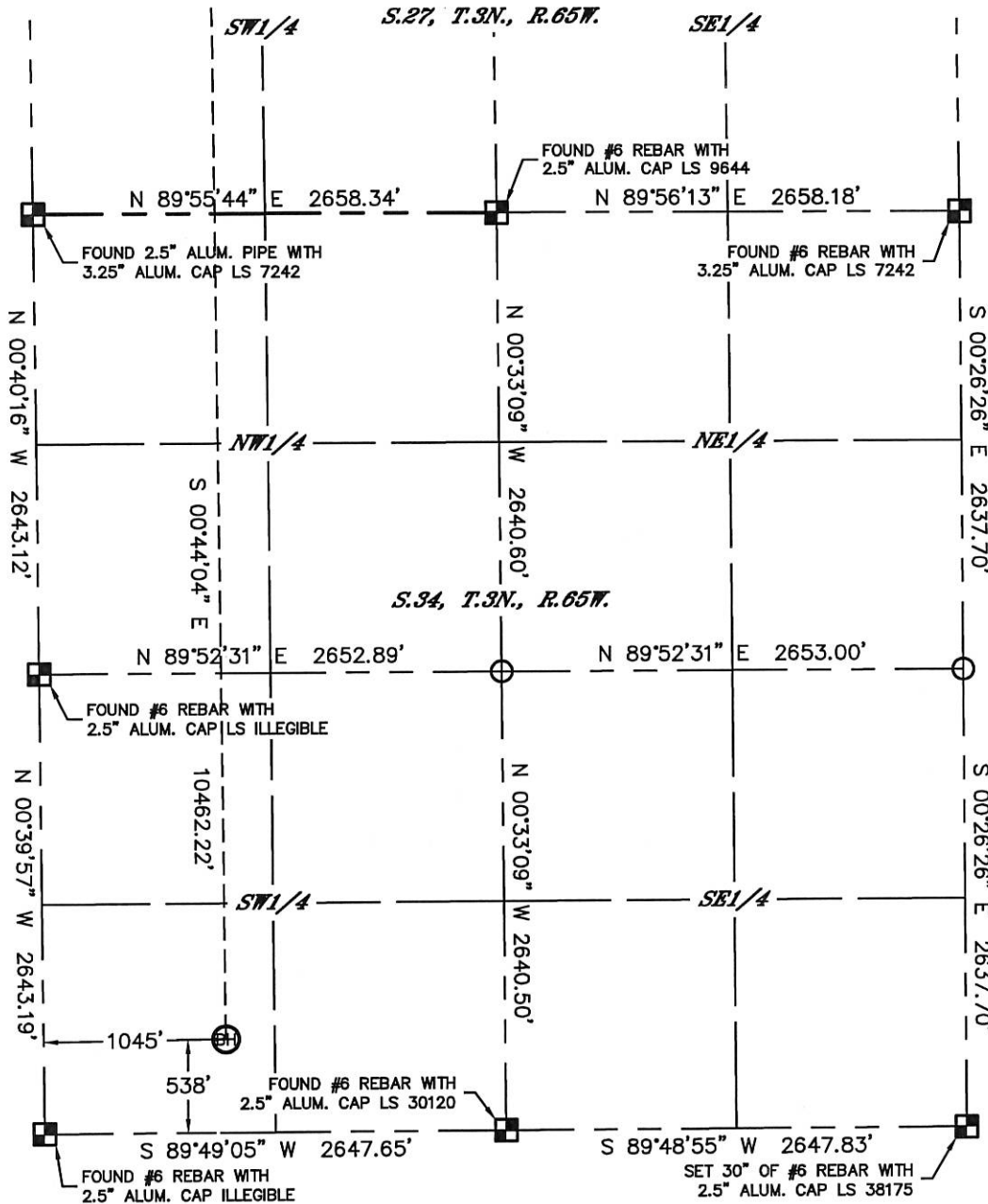
Lat40°, Inc. 1635 Foxtrail Drive, Suite 325 Loveland, CO 970-776-3321

WELL LOCATION CERTIFICATE

THIS MAP DOES NOT REPRESENT A BOUNDARY SURVEY

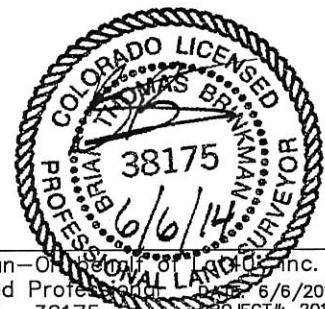
SECTION: 22
TOWNSHIP: 3N
RANGE: 65W

63 MOSER H34-769



LEGEND

- = ALIQUOT MONUMENT AS DESCRIBED
- = CALCULATED POSITION



SHEET 3 OF 3

Brian T. Brinkman—Owner of Lat40°, Inc.
Colorado Licensed Professional Land Surveyor No. 38175
Date: 6/6/2014
PROJECT#: 2013178

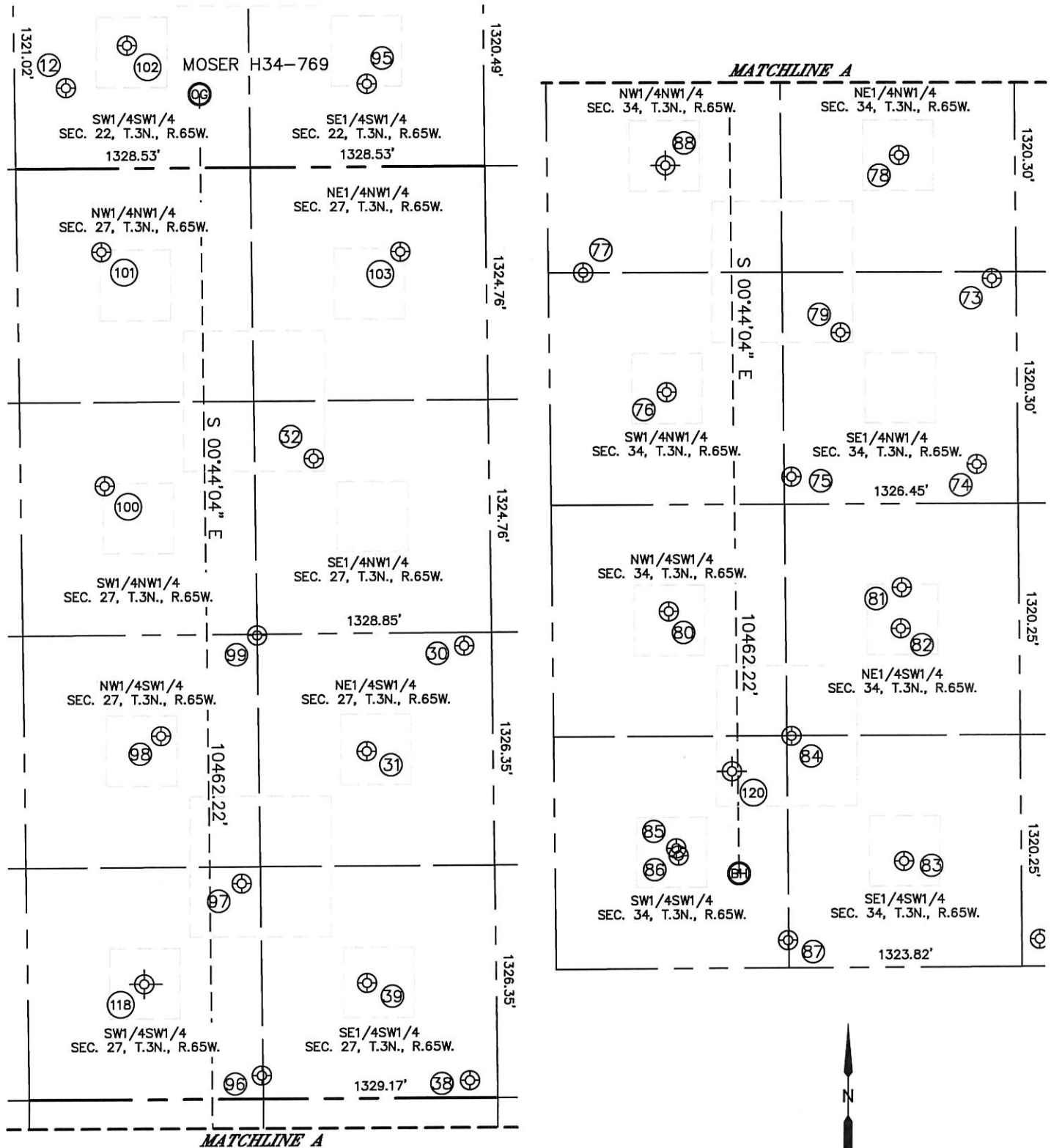


Lat40°, Inc. 1635 Foxtrail Drive, Suite 325 Loveland, CO 970-776-3321

SITE SKETCH

MOSER H34-769

SECTION: 22
TOWNSHIP: 3N
RANGE: 65W





SITE SKETCH

MOSER H34-769

SECTION: 22
TOWNSHIP: 3N
RANGE: 65W

WELL NO.	WELL NAME	SHL FOOTAGE				SHL LAT°	SHL LONG°	PDOP	ELEV (FT.)	1/4/1/4
12	MOSER H27-79HN	461	FSL	291	FWL	40.20495	-104.65824	3.0	4813	SWSW
30	RITCHEY H 27-21	2576	FSL	2501	FWL	40.19618	-104.65027	3.6	4818	NESW
31	RITCHEY H 27-11	1976	FSL	1941	FWL	40.19455	-104.65227	2.1	4819	NESW
32	RITCHEY 1-27 #1	1655	FNL	1663	FWL	40.19913	-104.65329	2.3	4816	SENW
38	RITCHEY H 34-28	100	FSL	2501	FWL	40.18939	-104.65023	2.3	4827	SESW
39	RITCHEY H 27-14	660	FSL	1926	FWL	40.19094	-104.65230	2.0	4823	SESW
73	MOSER H 34-18	1358	FNL	2517	FWL	40.18538	-104.65017	2.2	4828	SENW
74	MOSER H 34-21	2417	FNL	2420	FWL	40.18248	-104.65051	2.1	4833	SENW
75	MOSER H 34-20	2487	FNL	1367	FWL	40.18231	-104.65427	2.0	4832	SENW
76	MOSER H 34-05	2001	FNL	664	FWL	40.18366	-104.65679	2.0	4830	SWNW
77	MOSER H 34-31	1320	FNL	198	FWL	40.18554	-104.65847	2.0	4831	NWNW
78	MOSER H 34-03	660	FNL	1998	FWL	40.18731	-104.65203	1.6	4828	NENW
79	MOSER H 34-06	1664	FNL	1655	FWL	40.18456	-104.65325	1.6	4830	SENW
80	CANNON H34-12	2034	FSL	661	FWL	40.18023	-104.65679	1.6	4834	NWSW
81	CANNON LAND 11-34	2163	FSL	1986	FWL	40.18056	-104.65205	1.6	4835	NESW
82	CANNON H 34-11	1930	FSL	1978	FWL	40.17992	-104.65208	1.6	4836	NESW
83	CANNON H 34-14	603	FSL	1983	FWL	40.17628	-104.65205	1.7	4836	SESW
84	CANNON H 34-25	1320	FSL	1351	FWL	40.17826	-104.65432	1.7	4836	SESW
85	CANNON H 34-13	684	FSL	689	FWL	40.17653	-104.65668	1.7	4839	SWSW
86	CANNON X 3-30D	642	FSL	702	FWL	40.17641	-104.65664	2.1	4840	SWSW
87	CANNON X 3-29	156	FSL	1320	FWL	40.17507	-104.65442	2.1	4838	SWSW
88	MOSER H34-4 (P/A)	716	FNL	672	FWL	40.18719	-104.65677	N/A	4830	NWNW
95	FRANK 22-34	471	FSL	1996	FWL	40.20496	-104.65213	3.6	4809	SESW
96	RITCHEY H34-29	135	FSL	1320	FWL	40.18951	-104.65446	1.2	4834	SWSW
97	RITCHEY H27-25	1228	FSL	1221	FWL	40.19251	-104.65483	1.7	4822	SWSW
98	RITCHEY H27-12	2069	FSL	775	FWL	40.19483	-104.65644	2.5	4821	NWSW
99	RITCHEY H27-20	2640	FSL	1328	FWL	40.19638	-104.65447	2.3	4819	NWSW
100	RITCHEY H27-5	1801	FNL	476	FWL	40.19874	-104.65754	1.7	4817	SWNW
101	RITCHEY H27-4	473	FNL	477	FWL	40.20239	-104.65755	3.6	4814	NWNW
102	FRANK 22-33	699	FSL	640	FWL	40.20560	-104.65699	2.1	4812	SWSW
103	RITCHEY H 27-3	482	FNL	2171	FWL	40.20234	-104.65149	3.3	4812	NENW
118	RITCHEY H #27-13 (P/A)	660	FSL	660	FWL	40.19093	-104.65689	N/A	4827	SWSW
120	ROY MOSER UNIT #1 (P/A)	1120	FSL	1010	FWL	40.17764	-104.65554	N/A	4834	SWSW

NOTE: THE ABANDONED WELL DATA SHOWN IN RED ABOVE WAS OBTAINED FROM COGCC SCOUT CARDS.