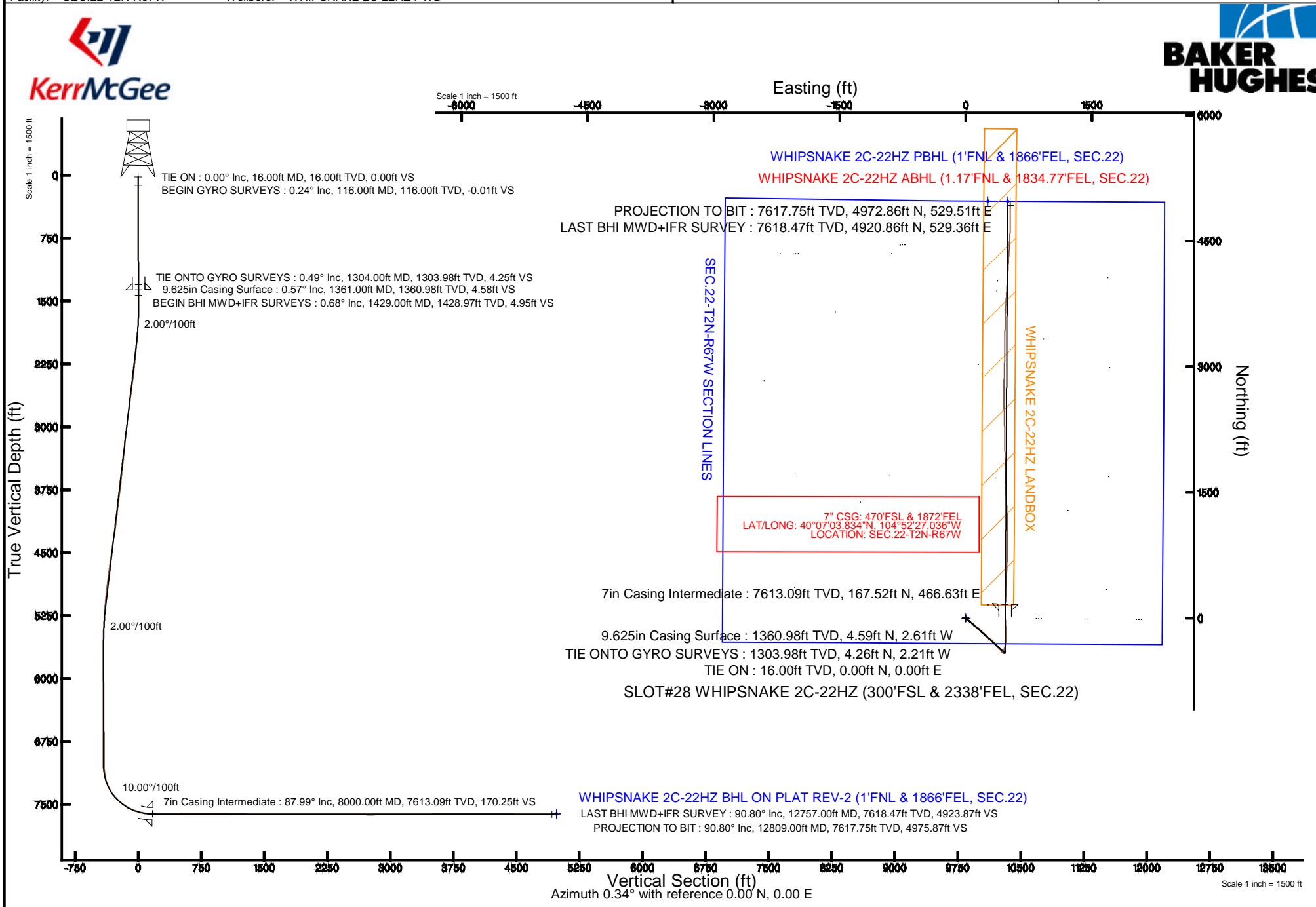


KERR-MCGEE OIL & GAS ONSHORE LP

Location: COLORADO Slot: SLOT#28 WHIPSNAKE 2C-22HZ (300'FSL & 2338'FEL, SEC.22)
 Field: WELD COUNTY (KERR MCGEE) Well: WHIPSNAKE 2C-22HZ
 Facility: SEC.22-T2N-R67W Wellbore: WHIPSNAKE 2C-22HZ PWB

Plot reference wellpath is WHIPSNAKE 2C-22HZ (REV-A.1) PWP

True vertical depths are referenced to XTREME 6 (16'KB) (RKB)	Grid System: NAD83 / Lambert Colorado SP, Northern Zone (501), US feet
Measured depths are referenced to XTREME 6 (16'KB) (RKB)	North Reference: True north
XTREME 6 (16'KB) (RKB) to Mean Sea Level: 5003 feet	Scale: True distance
Mean Sea Level to Mud line (At Slot: SLOT#28 WHIPSNAKE 2C-22HZ (300'FSL & 2338'FEL, SEC.22)): 0 feet	Depths are in feet
Coordinates are in feet referenced to Slot	Created by: robiale01 on 9/11/2014



Actual Wellpath Report

WHIPSNAKE 2C-22HZ AWP

Page 1 of 6

REFERENCE WELLPATH IDENTIFICATION			
Operator	KERR-MCGEE OIL & GAS ONSHORE LP	Slot	SLOT#28 WHIPSNAKE 2C-22HZ (300'FSL & 2338'FEL, SEC.22)
Area	COLORADO	Well	WHIPSNAKE 2C-22HZ
Field	WELD COUNTY (KERR MCGEE)	Wellbore	WHIPSNAKE 2C-22HZ AWB
Facility	SEC.22-T2N-R67W		

REPORT SETUP INFORMATION			
Projection System	NAD83 / Lambert Colorado SP, Northern Zone (501), US feet	Software System	WellArchitect® 4.0.0
North Reference	True	User	Robiale01
Scale	0.99996	Report Generated	9/11/2014 at 12:25:54 PM
Convergence at slot	n/a	Database/Source file	WellArchitectDB/WHIPSNAKE_2C-22HZ_AWB.xml

WELLPATH LOCATION						
	Local coordinates		Grid coordinates		Geographic coordinates	
	North[ft]	East[ft]	Easting[US ft]	Northing[US ft]	Latitude	Longitude
Slot Location	-4455.01	755.70	3174557.13	1286180.54	40°07'02.179"N	104°52'33.042"W
Facility Reference Pt			3173770.27	1290629.95	40°07'46.204"N	104°52'42.769"W
Field Reference Pt			3197771.84	1268891.29	40°04'09.600"N	104°47'36.000"W

WELLPATH DATUM			
Calculation method	Minimum curvature	XTREME 6 (16'KB) (RKB) to Facility Vertical Datum	5003.00ft
Horizontal Reference Pt	Slot	XTREME 6 (16'KB) (RKB) to Mean Sea Level	5003.00ft
Vertical Reference Pt	XTREME 6 (16'KB) (RKB)	XTREME 6 (16'KB) (RKB) to Mud Line at Slot (SLOT#28 WHIPSNAKE 2C-22HZ (300'FSL & 2338'FEL, SEC.22))	5003.00ft
MD Reference Pt	XTREME 6 (16'KB) (RKB)	Section Origin	N 0.00, E 0.00 ft
Field Vertical Reference	Mean Sea Level	Section Azimuth	6.08°

Actual Wellpath Report

WHIPSNAKE 2C-22HZ AWP

Page 2 of 6

REFERENCE WELLPATH IDENTIFICATION			
Operator	KERR-MCGEE OIL & GAS ONSHORE LP	Slot	SLOT#28 WHIPSNAKE 2C-22HZ (300'FSL & 2338'FEL, SEC.22)
Area	COLORADO	Well	WHIPSNAKE 2C-22HZ
Field	WELD COUNTY (KERR MCGEE)	Wellbore	WHIPSNAKE 2C-22HZ AWB
Facility	SEC.22-T2N-R67W		

WELLPATH DATA (135 stations) † = interpolated/extrapolated station												
MD [ft]	Inclination [°]	Azimuth [°]	TVD [ft]	Vert Sect [ft]	North [ft]	East [ft]	Grid East [US ft]	Grid North [US ft]	Latitude	Longitude	DLS [°/100ft]	Comments
0.00†	0.000	266.300	0.00	0.00	0.00	0.00	3174557.13	1286180.54	40°07'02.179"N	104°52'33.042"W	0.00	
16.00	0.000	266.300	16.00	0.00	0.00	0.00	3174557.13	1286180.54	40°07'02.179"N	104°52'33.042"W	0.00	TIE ON
116.00	0.240	266.300	116.00	-0.04	-0.01	-0.21	3174556.93	1286180.52	40°07'02.179"N	104°52'33.045"W	0.24	BEGIN GYRO SURVEYS
216.00	0.210	265.880	216.00	-0.10	-0.04	-0.60	3174556.53	1286180.49	40°07'02.179"N	104°52'33.050"W	0.03	
316.00	0.200	182.300	316.00	-0.31	-0.23	-0.79	3174556.35	1286180.30	40°07'02.177"N	104°52'33.052"W	0.27	
416.00	0.090	353.650	416.00	-0.41	-0.32	-0.81	3174556.33	1286180.21	40°07'02.176"N	104°52'33.052"W	0.29	
516.00	0.070	328.270	516.00	-0.28	-0.19	-0.85	3174556.29	1286180.34	40°07'02.177"N	104°52'33.053"W	0.04	
616.00	0.260	20.390	616.00	-0.01	0.07	-0.80	3174556.33	1286180.60	40°07'02.180"N	104°52'33.052"W	0.22	
716.00	0.200	343.700	716.00	0.37	0.45	-0.77	3174556.36	1286180.98	40°07'02.183"N	104°52'33.052"W	0.16	
816.00	0.310	354.220	816.00	0.79	0.89	-0.85	3174556.28	1286181.42	40°07'02.188"N	104°52'33.053"W	0.12	
916.00	0.300	347.480	915.99	1.31	1.41	-0.93	3174556.19	1286181.94	40°07'02.193"N	104°52'33.054"W	0.04	
1016.00	0.500	341.260	1015.99	1.95	2.08	-1.13	3174555.99	1286182.61	40°07'02.200"N	104°52'33.057"W	0.20	
1116.00	0.410	355.680	1115.99	2.70	2.85	-1.29	3174555.82	1286183.38	40°07'02.207"N	104°52'33.059"W	0.14	
1216.00	0.610	321.660	1215.99	3.43	3.63	-1.65	3174555.46	1286184.15	40°07'02.215"N	104°52'33.063"W	0.35	
1304.00	0.490	315.000	1303.98	4.00	4.26	-2.21	3174554.90	1286184.78	40°07'02.221"N	104°52'33.070"W	0.15	TIE ON TO GYRO SURVEYS
1429.00	0.680	296.680	1428.97	4.60	4.97	-3.25	3174553.85	1286185.48	40°07'02.228"N	104°52'33.084"W	0.21	BEGIN BHI MWD+IFR SURVEYS
1520.00	0.670	296.150	1519.97	4.97	5.45	-4.21	3174552.89	1286185.95	40°07'02.233"N	104°52'33.096"W	0.01	
1611.00	1.410	157.890	1610.96	4.17	4.64	-4.27	3174552.84	1286185.15	40°07'02.225"N	104°52'33.097"W	2.16	
1702.00	3.120	133.470	1701.89	1.68	1.90	-2.05	3174555.07	1286182.43	40°07'02.198"N	104°52'33.068"W	2.12	
1794.00	4.920	131.120	1793.66	-2.11	-2.41	2.74	3174559.89	1286178.14	40°07'02.155"N	104°52'33.007"W	1.96	
1886.00	6.360	124.990	1885.21	-6.84	-7.93	9.89	3174567.08	1286172.68	40°07'02.101"N	104°52'32.915"W	1.69	
1977.00	8.370	129.060	1975.46	-12.88	-15.00	19.16	3174576.40	1286165.68	40°07'02.031"N	104°52'32.795"W	2.28	
2068.00	9.920	128.650	2065.30	-20.71	-24.07	30.43	3174587.73	1286156.69	40°07'01.941"N	104°52'32.650"W	1.70	
2250.00	10.000	124.170	2244.56	-36.59	-42.73	55.75	3174613.18	1286138.20	40°07'01.757"N	104°52'32.324"W	0.43	
2431.00	12.060	127.220	2422.20	-53.77	-63.00	83.81	3174641.38	1286118.13	40°07'01.556"N	104°52'31.963"W	1.18	
2612.00	11.170	133.930	2599.50	-74.31	-86.60	111.49	3174669.23	1286094.73	40°07'01.323"N	104°52'31.607"W	0.89	
2789.00	9.500	133.560	2773.63	-93.72	-108.56	134.43	3174692.32	1286072.93	40°07'01.106"N	104°52'31.312"W	0.94	
2959.00	10.880	133.940	2940.94	-112.10	-129.36	156.15	3174714.18	1286052.28	40°07'00.901"N	104°52'31.032"W	0.81	
3129.00	9.780	132.050	3108.18	-130.43	-150.17	178.42	3174736.60	1286031.64	40°07'00.695"N	104°52'30.745"W	0.68	
3300.00	7.940	130.250	3277.14	-145.60	-167.53	198.22	3174756.52	1286014.42	40°07'00.523"N	104°52'30.491"W	1.09	
3470.00	9.150	134.660	3445.25	-160.62	-184.62	216.80	3174775.22	1285997.46	40°07'00.355"N	104°52'30.251"W	0.81	
3641.00	9.050	128.610	3614.10	-176.34	-202.57	236.98	3174795.52	1285979.65	40°07'00.177"N	104°52'29.992"W	0.56	
3811.00	9.880	136.290	3781.79	-192.94	-221.45	257.51	3174816.18	1285960.91	40°06'59.991"N	104°52'29.727"W	0.89	
3982.00	11.140	129.750	3949.92	-211.57	-242.62	280.35	3174839.17	1285939.90	40°06'59.781"N	104°52'29.433"W	1.01	
4153.00	10.310	130.180	4117.94	-229.31	-263.06	304.74	3174863.71	1285919.64	40°06'59.579"N	104°52'29.120"W	0.49	
4323.00	12.440	137.230	4284.60	-249.90	-286.32	328.80	3174887.93	1285896.55	40°06'59.350"N	104°52'28.810"W	1.49	
4493.00	10.490	140.800	4451.20	-272.84	-311.76	351.02	3174910.32	1285871.27	40°06'59.098"N	104°52'28.524"W	1.22	
4663.00	11.270	135.490	4618.14	-294.27	-335.60	372.44	3174931.92	1285847.59	40°06'58.863"N	104°52'28.248"W	0.75	
4834.00	10.060	136.610	4786.19	-314.59	-358.37	394.42	3174954.05	1285824.97	40°06'58.638"N	104°52'27.965"W	0.72	
4919.00	9.480	138.730	4869.95	-324.16	-369.02	404.14	3174963.84	1285814.38	40°06'58.532"N	104°52'27.840"W	0.80	
5004.00	8.340	139.530	4953.93	-333.14	-378.97	412.76	3174972.53	1285804.50	40°06'58.434"N	104°52'27.729"W	1.35	
5089.00	7.560	136.960	5038.11	-341.04	-387.75	420.57	3174980.41	1285795.77	40°06'58.347"N	104°52'27.629"W	1.01	
5175.00	6.910	135.560	5123.43	-348.03	-395.58	428.06	3174987.95	1285788.00	40°06'58.270"N	104°52'27.532"W	0.78	
5260.00	6.560	137.710	5207.84	-354.51	-402.82	434.90	3174994.84	1285780.81	40°06'58.198"N	104°52'27.444"W	0.51	
5344.00	4.620	133.580	5291.44	-359.76	-408.70	440.58	3175000.56	1285774.96	40°06'58.140"N	104°52'27.371"W	2.36	

Actual Wellpath Report

WHIPSNAKE 2C-22HZ AWP

Page 3 of 6

REFERENCE WELLPATH IDENTIFICATION			
Operator	KERR-MCGEE OIL & GAS ONSHORE LP	Slot	SLOT#28 WHIPSNAKE 2C-22HZ (300'FSL & 2338'FEL, SEC.22)
Area	COLORADO	Well	WHIPSNAKE 2C-22HZ
Field	WELD COUNTY (KERR MCGEE)	Wellbore	WHIPSNAKE 2C-22HZ AWB
Facility	SEC.22-T2N-R67W		

WELLPATH DATA (135 stations) † = interpolated/extrapolated station												
MD [ft]	Inclination [°]	Azimuth [°]	TVD [ft]	Vert Sect [ft]	North [ft]	East [ft]	Grid East [US ft]	Grid North [US ft]	Latitude	Longitude	DLS [°/100ft]	Comments
5429.00	3.840	132.640	5376.20	-363.54	-412.99	445.16	3175005.17	1285770.71	40°06'58.098"N	104°52'27.312"W	0.92	
5514.00	3.170	131.050	5461.04	-366.58	-416.46	449.02	3175009.06	1285767.26	40°06'58.063"N	104°52'27.262"W	0.80	
5599.00	1.770	104.860	5545.97	-368.13	-418.34	452.06	3175012.11	1285765.41	40°06'58.045"N	104°52'27.223"W	2.08	
5684.00	0.780	16.190	5630.95	-367.76	-418.12	453.49	3175013.54	1285765.63	40°06'58.047"N	104°52'27.205"W	2.26	
5939.00	0.270	337.610	5885.94	-365.52	-415.90	453.75	3175013.78	1285767.86	40°06'58.069"N	104°52'27.202"W	0.23	
6194.00	1.190	305.900	6140.92	-363.67	-413.79	451.38	3175011.39	1285769.95	40°06'58.090"N	104°52'27.232"W	0.38	
6447.00	0.450	7.110	6393.89	-361.37	-411.27	449.37	3175009.37	1285772.46	40°06'58.115"N	104°52'27.258"W	0.42	
6703.00	0.520	293.420	6649.88	-360.02	-409.81	448.43	3175008.42	1285773.91	40°06'58.129"N	104°52'27.270"W	0.23	
6958.00	0.470	106.790	6904.88	-359.87	-409.65	448.37	3175008.36	1285774.07	40°06'58.131"N	104°52'27.271"W	0.39	
7086.00	0.350	16.040	7032.88	-359.59	-409.43	448.98	3175008.97	1285774.30	40°06'58.133"N	104°52'27.263"W	0.46	
7128.00	5.110	0.400	7074.82	-357.60	-407.43	449.03	3175009.00	1285776.30	40°06'58.153"N	104°52'27.262"W	11.37	
7170.00	8.800	8.290	7116.50	-352.52	-402.38	449.50	3175009.44	1285781.35	40°06'58.203"N	104°52'27.256"W	9.06	
7212.00	10.810	13.300	7157.89	-345.40	-395.37	450.87	3175010.76	1285788.37	40°06'58.272"N	104°52'27.239"W	5.19	
7254.00	13.830	15.970	7198.92	-336.55	-386.70	453.16	3175012.99	1285797.05	40°06'58.357"N	104°52'27.209"W	7.32	
7296.00	18.040	15.830	7239.29	-325.19	-375.62	456.32	3175016.07	1285808.16	40°06'58.467"N	104°52'27.169"W	10.02	
7338.00	23.700	14.970	7278.52	-310.43	-361.19	460.28	3175019.92	1285822.61	40°06'58.610"N	104°52'27.118"W	13.50	
7381.00	28.640	13.710	7317.10	-291.67	-342.82	464.95	3175024.47	1285841.01	40°06'58.791"N	104°52'27.057"W	11.56	
7424.00	33.890	12.020	7353.85	-269.51	-321.07	469.90	3175029.26	1285862.80	40°06'59.006"N	104°52'26.994"W	12.38	
7466.00	39.830	10.160	7387.44	-244.43	-296.35	474.71	3175033.90	1285887.54	40°06'59.250"N	104°52'26.932"W	14.39	
7509.00	42.510	6.690	7419.81	-216.15	-268.36	478.83	3175037.83	1285915.56	40°06'59.527"N	104°52'26.879"W	8.19	
7551.00	44.990	1.430	7450.15	-187.15	-239.41	480.86	3175039.65	1285944.53	40°06'59.813"N	104°52'26.853"W	10.48	
7594.00	49.770	357.940	7479.27	-155.73	-207.79	480.65	3175039.21	1285976.15	40°07'00.126"N	104°52'26.855"W	12.62	
7636.00	54.520	357.120	7505.03	-122.95	-174.67	479.21	3175037.54	1286009.25	40°07'00.453"N	104°52'26.874"W	11.41	
7677.00	60.520	356.720	7527.04	-88.82	-140.15	477.35	3175035.44	1286043.76	40°07'00.794"N	104°52'26.898"W	14.66	
7719.00	63.300	356.520	7546.82	-52.27	-103.16	475.17	3175032.99	1286080.73	40°07'01.159"N	104°52'26.926"W	6.63	
7761.00	68.600	356.360	7563.93	-14.47	-64.90	472.78	3175030.34	1286118.97	40°07'01.538"N	104°52'26.956"W	12.62	
7804.00	71.160	357.840	7578.72	25.40	-24.58	470.75	3175028.02	1286159.28	40°07'01.936"N	104°52'26.983"W	6.77	
7847.00	74.790	357.150	7591.30	66.05	16.49	468.95	3175025.93	1286200.33	40°07'02.342"N	104°52'27.006"W	8.58	
7889.00	79.070	357.870	7600.80	106.50	57.36	467.17	3175023.87	1286241.18	40°07'02.746"N	104°52'27.029"W	10.33	
7932.00	82.660	358.900	7607.63	148.56	99.79	465.98	3175022.38	1286283.60	40°07'03.165"N	104°52'27.044"W	8.68	
7961.00	85.070	359.880	7610.73	177.20	128.62	465.67	3175021.87	1286312.42	40°07'03.450"N	104°52'27.048"W	8.96	
8000.00†	87.990	2.946	7613.09	215.99	167.52	466.63	3175022.56	1286351.33	40°07'03.834"N	104°52'27.036"W	10.85	7" CASING POINT
8010.00	88.740	3.730	7613.37	225.97	177.50	467.21	3175023.07	1286361.32	40°07'03.933"N	104°52'27.028"W	10.85	
8069.00	89.130	1.750	7614.47	284.86	236.42	470.03	3175025.47	1286420.25	40°07'04.515"N	104°52'26.992"W	3.42	
8154.00	90.030	2.260	7615.09	369.64	321.37	473.01	3175027.85	1286505.21	40°07'05.355"N	104°52'26.954"W	1.22	
8240.00	90.580	2.750	7614.63	455.47	407.28	476.77	3175031.00	1286591.15	40°07'06.204"N	104°52'26.905"W	0.86	
8325.00	91.140	3.510	7613.36	540.35	492.14	481.41	3175035.04	1286676.04	40°07'07.042"N	104°52'26.845"W	1.11	
8410.00	90.030	2.820	7612.49	625.23	577.01	486.10	3175039.14	1286760.93	40°07'07.881"N	104°52'26.785"W	1.54	
8495.00	90.400	2.640	7612.17	710.09	661.91	490.15	3175042.59	1286845.85	40°07'08.720"N	104°52'26.733"W	0.48	
8581.00	90.060	2.030	7611.83	795.90	747.84	493.65	3175045.49	1286931.80	40°07'09.569"N	104°52'26.688"W	0.81	
8666.00	89.190	0.100	7612.38	880.57	832.82	495.23	3175046.47	1287016.78	40°07'10.409"N	104°52'26.667"W	2.49	
8751.00	89.810	359.330	7613.12	965.04	917.81	494.81	3175045.45	1287101.77	40°07'11.249"N	104°52'26.673"W	1.16	
8835.00	90.330	359.650	7613.02	1048.49	1001.81	494.06	3175044.11	1287185.76	40°07'12.079"N	104°52'26.682"W	0.73	
8920.00	89.250	359.660	7613.33	1132.95	1086.81	493.55	3175043.00	1287270.74	40°07'12.919"N	104°52'26.689"W	1.27	
9005.00	89.350	358.750	7614.37	1217.34	1171.79	492.37	3175041.22	1287355.71	40°07'13.759"N	104°52'26.704"W	1.08	

Actual Wellpath Report

WHIPSNAKE 2C-22HZ AWP

Page 4 of 6

REFERENCE WELLPATH IDENTIFICATION			
Operator	KERR-MCGEE OIL & GAS ONSHORE LP	Slot	SLOT#28 WHIPSNAKE 2C-22HZ (300'FSL & 2338'FEL, SEC.22)
Area	COLORADO	Well	WHIPSNAKE 2C-22HZ
Field	WELD COUNTY (KERR MCGEE)	Wellbore	WHIPSNAKE 2C-22HZ AWB
Facility	SEC.22-T2N-R67W		

WELLPATH DATA (135 stations)												
MD [ft]	Inclination [°]	Azimuth [°]	TVD [ft]	Vert Sect [ft]	North [ft]	East [ft]	Grid East [US ft]	Grid North [US ft]	Latitude	Longitude	DLS [°/100ft]	Comments
9090.00	87.580	357.800	7616.65	1301.51	1256.72	489.81	3175038.07	1287440.62	40°07'14.598"N	104°52'26.737"W	2.36	
9176.00	87.870	357.380	7620.06	1386.50	1342.57	486.20	3175033.85	1287526.44	40°07'15.446"N	104°52'26.783"W	0.59	
9260.00	90.300	357.330	7621.40	1469.52	1426.47	482.32	3175029.39	1287610.30	40°07'16.275"N	104°52'26.833"W	2.89	
9345.00	90.990	357.410	7620.45	1553.53	1511.37	478.42	3175024.89	1287695.17	40°07'17.114"N	104°52'26.884"W	0.82	
9430.00	90.670	358.560	7619.21	1637.67	1596.31	475.43	3175021.30	1287780.08	40°07'17.954"N	104°52'26.922"W	1.40	
9515.00	89.190	358.850	7619.32	1721.97	1681.28	473.51	3175018.78	1287865.04	40°07'18.794"N	104°52'26.947"W	1.77	
9600.00	89.410	358.610	7620.36	1806.26	1766.26	471.63	3175016.30	1287949.99	40°07'19.633"N	104°52'26.971"W	0.38	
9685.00	89.960	358.720	7620.82	1890.55	1851.23	469.65	3175013.72	1288034.95	40°07'20.473"N	104°52'26.996"W	0.66	
9771.00	90.460	357.900	7620.51	1975.76	1937.19	467.11	3175010.58	1288120.89	40°07'21.323"N	104°52'27.029"W	1.12	
9856.00	91.200	358.490	7619.28	2059.95	2022.14	464.44	3175007.31	1288205.81	40°07'22.162"N	104°52'27.063"W	1.11	
9941.00	90.120	358.760	7618.30	2144.22	2107.11	462.40	3175004.67	1288290.76	40°07'23.002"N	104°52'27.090"W	1.31	
10026.00	89.070	359.840	7618.90	2228.62	2192.10	461.36	3175003.03	1288375.74	40°07'23.842"N	104°52'27.103"W	1.77	
10111.00	89.170	359.170	7620.21	2313.06	2277.08	460.62	3175001.70	1288460.71	40°07'24.681"N	104°52'27.112"W	0.80	
10196.00	89.660	359.210	7621.07	2397.44	2362.07	459.42	3174999.90	1288545.68	40°07'25.521"N	104°52'27.128"W	0.58	
10282.00	90.120	357.740	7621.24	2482.68	2448.04	457.13	3174997.01	1288631.63	40°07'26.371"N	104°52'27.157"W	1.79	
10367.00	90.770	358.290	7620.58	2566.84	2532.98	454.19	3174993.47	1288716.55	40°07'27.210"N	104°52'27.195"W	1.00	
10452.00	88.380	358.560	7621.21	2651.07	2617.94	451.85	3174990.53	1288801.48	40°07'28.050"N	104°52'27.225"W	2.83	
10537.00	89.160	1.220	7623.03	2735.55	2702.91	451.69	3174989.77	1288886.45	40°07'28.889"N	104°52'27.227"W	3.26	
10622.00	90.360	1.470	7623.39	2820.25	2787.89	453.69	3174991.17	1288971.43	40°07'29.729"N	104°52'27.202"W	1.44	
10708.00	91.130	1.930	7622.27	2906.00	2873.84	456.24	3174993.11	1289057.40	40°07'30.579"N	104°52'27.169"W	1.04	
10793.00	89.750	1.150	7621.62	2990.72	2958.81	458.52	3174994.80	1289142.37	40°07'31.418"N	104°52'27.139"W	1.86	
10878.00	90.520	1.170	7621.42	3075.41	3043.79	460.24	3174995.92	1289227.36	40°07'32.258"N	104°52'27.117"W	0.91	
10963.00	90.370	0.710	7620.76	3160.07	3128.77	461.64	3174996.72	1289312.35	40°07'33.098"N	104°52'27.099"W	0.57	
11048.00	89.290	359.700	7621.01	3244.62	3213.77	461.94	3174996.42	1289397.34	40°07'33.938"N	104°52'27.095"W	1.74	
11133.00	89.900	0.690	7621.61	3329.17	3298.77	462.23	3174996.12	1289482.34	40°07'34.778"N	104°52'27.092"W	1.37	
11218.00	91.290	1.650	7620.73	3413.85	3383.74	463.97	3174997.25	1289567.32	40°07'35.617"N	104°52'27.069"W	1.99	
11304.00	91.500	0.980	7618.63	3499.52	3469.69	465.94	3174998.62	1289653.28	40°07'36.467"N	104°52'27.044"W	0.82	
11389.00	91.140	1.300	7616.68	3584.18	3554.65	467.63	3174999.71	1289738.24	40°07'37.306"N	104°52'27.022"W	0.57	
11474.00	90.300	2.560	7615.61	3668.95	3639.60	470.49	3175001.98	1289823.20	40°07'38.146"N	104°52'26.985"W	1.78	
11559.00	89.410	3.470	7615.82	3753.83	3724.48	474.96	3175005.85	1289908.11	40°07'38.985"N	104°52'26.928"W	1.50	
11645.00	89.960	3.490	7616.30	3839.74	3810.32	480.18	3175010.47	1289993.98	40°07'39.833"N	104°52'26.860"W	0.64	
11730.00	90.120	3.640	7616.24	3924.66	3895.15	485.47	3175015.15	1290078.84	40°07'40.671"N	104°52'26.792"W	0.26	
11815.00	90.430	3.130	7615.83	4009.56	3980.00	490.49	3175019.58	1290163.72	40°07'41.510"N	104°52'26.728"W	0.70	
11900.00	90.950	3.180	7614.81	4094.45	4064.87	495.16	3175023.66	1290248.62	40°07'42.348"N	104°52'26.667"W	0.61	
11985.00	89.720	3.810	7614.31	4179.36	4149.70	500.35	3175028.24	1290333.49	40°07'43.187"N	104°52'26.601"W	1.63	
12070.00	90.270	3.680	7614.32	4264.28	4234.52	505.90	3175033.19	1290418.34	40°07'44.025"N	104°52'26.529"W	0.66	
12156.00	88.520	3.050	7615.22	4350.18	4320.37	510.95	3175037.64	1290504.21	40°07'44.873"N	104°52'26.464"W	2.16	
12241.00	88.880	3.160	7617.15	4435.04	4405.22	515.55	3175041.64	1290589.09	40°07'45.712"N	104°52'26.405"W	0.44	
12326.00	89.560	3.100	7618.31	4519.92	4490.08	520.19	3175045.69	1290673.98	40°07'46.550"N	104°52'26.345"W	0.80	
12411.00	89.870	3.240	7618.73	4604.81	4574.95	524.89	3175049.79	1290758.88	40°07'47.389"N	104°52'26.285"W	0.40	
12494.00	89.660	1.500	7619.07	4687.63	4657.88	528.32	3175052.64	1290841.82	40°07'48.209"N	104°52'26.240"W	2.11	
12581.00	89.780	359.770	7619.50	4774.24	4744.87	529.29	3175052.99	1290928.81	40°07'49.068"N	104°52'26.228"W	1.99	
12666.00	90.360	0.080	7619.39	4858.75	4829.87	529.17	3175052.28	1291013.81	40°07'49.908"N	104°52'26.229"W	0.77	
12757.00	90.800	0.160	7618.47	4949.25	4920.86	529.36	3175051.83	1291104.80	40°07'50.807"N	104°52'26.227"W	0.49	LAST BHI MWD+IFR SURVEY
12809.00	90.800	0.160	7617.75	5000.97	4972.86	529.51	3175051.61	1291156.79	40°07'51.321"N	104°52'26.225"W	0.00	PROJECTION TO BIT

Actual Wellpath Report

WHIPSNAKE 2C-22HZ AWP

Page 5 of 6

REFERENCE WELLPATH IDENTIFICATION			
Operator	KERR-MCGEE OIL & GAS ONSHORE LP	Slot	SLOT#28 WHIPSNAKE 2C-22HZ (300'FSL & 2338'FEL, SEC.22)
Area	COLORADO	Well	WHIPSNAKE 2C-22HZ
Field	WELD COUNTY (KERR MCGEE)	Wellbore	WHIPSNAKE 2C-22HZ AWB
Facility	SEC.22-T2N-R67W		

HOLE & CASING SECTIONS - Ref Wellbore: WHIPSNAKE 2C-22HZ AWB Ref Wellpath: WHIPSNAKE 2C-22HZ AWP									
String/Diameter	Start MD [ft]	End MD [ft]	Interval [ft]	Start TVD [ft]	End TVD [ft]	Start N/S [ft]	Start E/W [ft]	End N/S [ft]	End E/W [ft]
13.5in Open Hole	16.00	1361.00	1345.00	16.00	1360.98	0.00	0.00	4.59	-2.61
9.625in Casing Surface	16.00	1361.00	1345.00	16.00	1360.98	0.00	0.00	4.59	-2.61
8.75in Open Hole	1361.00	8010.00	6649.00	1360.98	7613.37	4.59	-2.61	177.50	467.21
7in Casing Intermediate	16.00	8000.00	7984.00	16.00	7613.09	0.00	0.00	167.52	466.63
6.125in Open Hole	8010.00	12809.00	4799.00	7613.37	7617.75	177.50	467.21	4972.86	529.51

WELLPATH COMPOSITION - Ref Wellbore: WHIPSNAKE 2C-22HZ AWB Ref Wellpath: WHIPSNAKE 2C-22HZ AWP				
Start MD [ft]	End MD [ft]	Positional Uncertainty Model	Log Name/Comment	Wellbore
16.00	1304.00	Generic gyro - continuous (Standard)	MS GYRO SURVEYS <116-1304>	WHIPSNAKE 2C-22HZ AWB
1304.00	8010.00	NaviTrak (MAGCORR,IFR)	BHI NAVITRAK MWD+IFR 8 3/4" <1429-8010>	WHIPSNAKE 2C-22HZ AWB
8010.00	12757.00	NaviTrak (MAGCORR,IFR)	BHI NAVITRAK MWD+IFR 6 1/8" <8069-12757>	WHIPSNAKE 2C-22HZ AWB
12757.00	12809.00	Blind Drilling (std)	Projection to bit	WHIPSNAKE 2C-22HZ AWB



Actual Wellpath Report

WHIPSNAKE 2C-22HZ AWP

Page 6 of 6



REFERENCE WELLPATH IDENTIFICATION			
Operator	KERR-MCGEE OIL & GAS ONSHORE LP	Slot	SLOT#28 WHIPSNAKE 2C-22HZ (300'FSL & 2338'FEL, SEC.22)
Area	COLORADO	Well	WHIPSNAKE 2C-22HZ
Field	WELD COUNTY (KERR MCGEE)	Wellbore	WHIPSNAKE 2C-22HZ AWB
Facility	SEC.22-T2N-R67W		

WELLPATH COMMENTS				
MD [ft]	Inclination [°]	Azimuth [°]	TVD [ft]	Comment
16.00	0.000	266.300	16.00	TIE ON
116.00	0.240	266.300	116.00	BEGIN GYRO SURVEYS
1304.00	0.490	315.000	1303.98	TIE ONTO GYRO SURVEYS
1429.00	0.680	296.680	1428.97	BEGIN BHI MWD+IFR SURVEYS
8000.00	87.990	2.946	7613.09	7" CASING POINT
12757.00	90.800	0.160	7618.47	LAST BHI MWD+IFR SURVEY
12809.00	90.800	0.160	7617.75	PROJECTION TO BIT