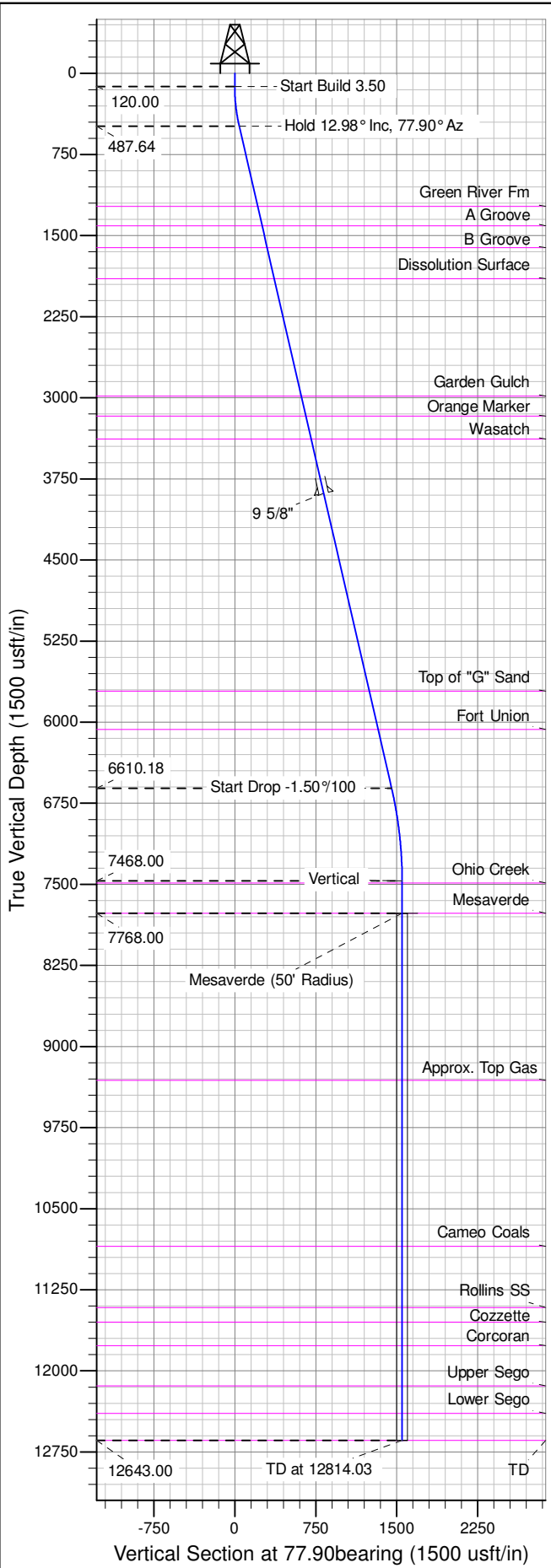
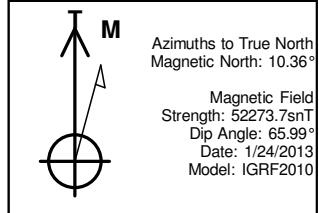
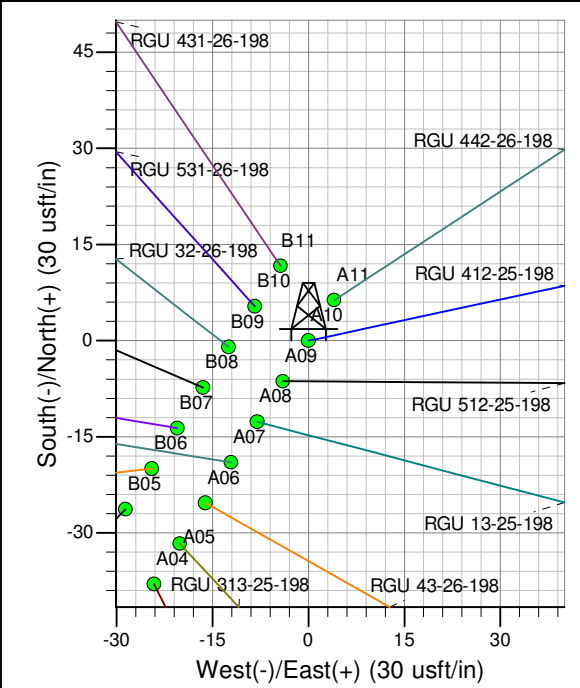
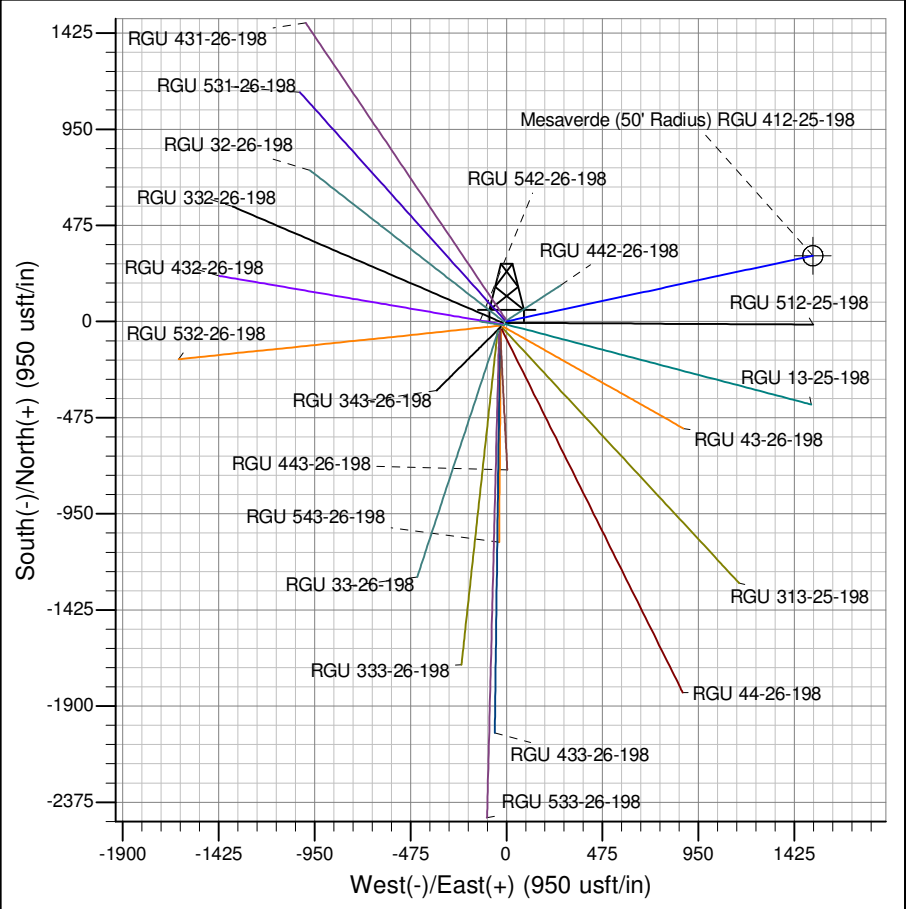




Well Name: RGU 412-25-198  
Surface Location: RGU 42-26-198  
North American Datum 1983 , US State Plane 1983 , Colorado Central Zone  
Ground Elevation: 6622.00  
+N/-S +E/-W Northing Easting Latitude Longitude Slot  
0.00 0.00 1778110.10000 2199619.70000 39.93521 -108.35449 A10  
KELLY BUSHING @ 6643.00usft (Cyclone 29 (21' RKB) kjs)



ANNOTATIONS									
TVD	MD	Inc	Azi	+N/-S	+E/-W	Vsect	Departure	Annotation	
120.00	120.00	0.00	0.00	0.00	0.00	0.00	0.00	Start Build 3.50	
487.64	490.80	12.98	77.90	8.77	40.89	41.81	41.81	Hold 12.98° Inc, 77.90° Az	
6610.18	6773.84	12.98	77.90	304.63	1420.54	1452.83	1452.83	Start Drop -1.50%/100	
7468.00	7639.03	0.00	0.00	325.09	1515.94	1550.40	1550.40	Vertical	
7768.00	7939.03	0.00	0.00	325.09	1515.94	1550.40	1550.40	Mesaverde	
12643.00	12814.03	0.00	0.00	325.09	1515.94	1550.40	1550.40	TD at 12814.03	



Project: RG 26-01S-098W  
Site: RGU 42-26-198  
Well: RGU 412-25-198  
Design #2 12Aug14 mab