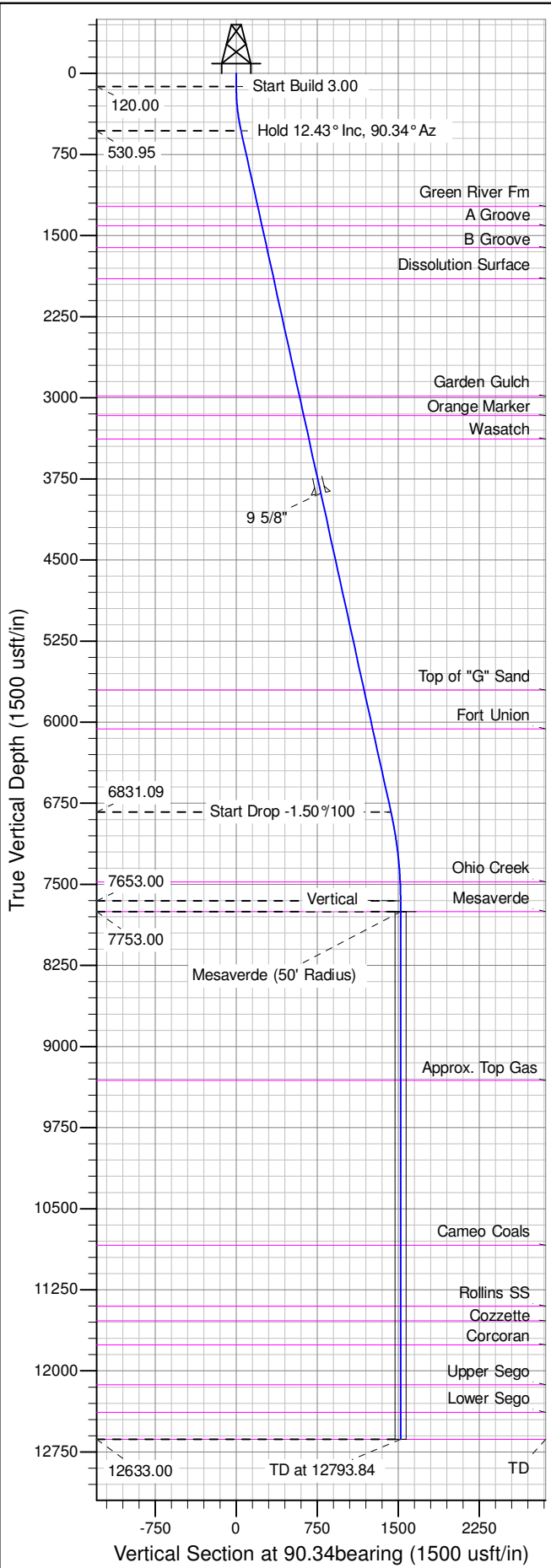
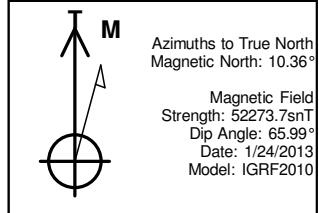
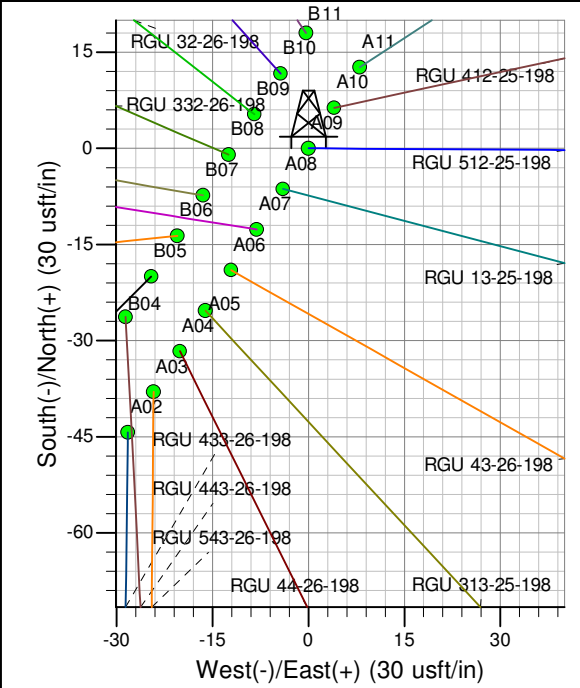
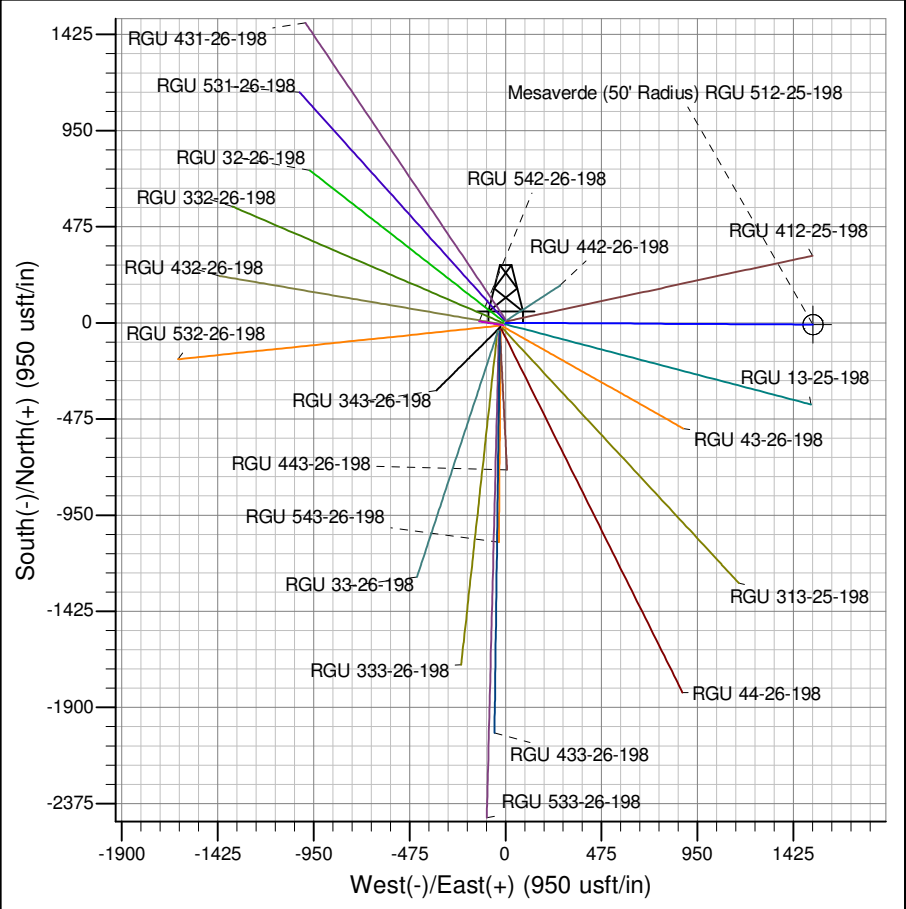




Well Name: RGU 512-25-198  
Surface Location: RGU 42-26-198  
North American Datum 1983 , US State Plane 1983 , Colorado Central Zone  
Ground Elevation: 6622.00  
+N/-S +E/-W Northing Easting Latitude Longitude Slot  
0.00 0.00 1778103.90000 2199615.50000 39.93519 -108.35451 A09  
KELLY BUSHING @ 6643.00usft (Cyclone 29 (21' RKB) kjs)



ANNOTATIONS									
TVD	MD	Inc	Azi	+N/-S	+E/-W	Vsect	Departure	Annotation	
120.00	120.00	0.00	0.00	0.00	0.00	0.00	0.00	Start Build 3.00	Start Build 3.00
530.95	534.19	12.43	90.34	-0.27	44.74	44.74	44.74	Hold 12.43° Inc, 90.34° Az	Hold 12.43° Inc, 90.34° Az
6831.09	6985.45	12.43	90.34	-8.54	1432.86	1432.89	1432.89	Start Drop -1.50%/100	Start Drop -1.50%/100
7653.00	7813.84	0.00	0.00	-9.08	1522.34	1522.36	1522.36	Vertical	Vertical
7753.00	7913.84	0.00	0.00	-9.08	1522.34	1522.36	1522.36	Mesaverde	Mesaverde
12633.00	12793.84	0.00	0.00	-9.08	1522.34	1522.36	1522.36	TD at 12793.84	TD at 12793.84



Magnetic Field  
Strength: 52273.7snT  
Dip Angle: 65.99°  
Date: 1/24/2013  
Model: IGRF2010

Project: RG 26-01S-098W  
Site: RGU 42-26-198  
Well: RGU 512-25-198  
Design #2 12Aug14 mab