

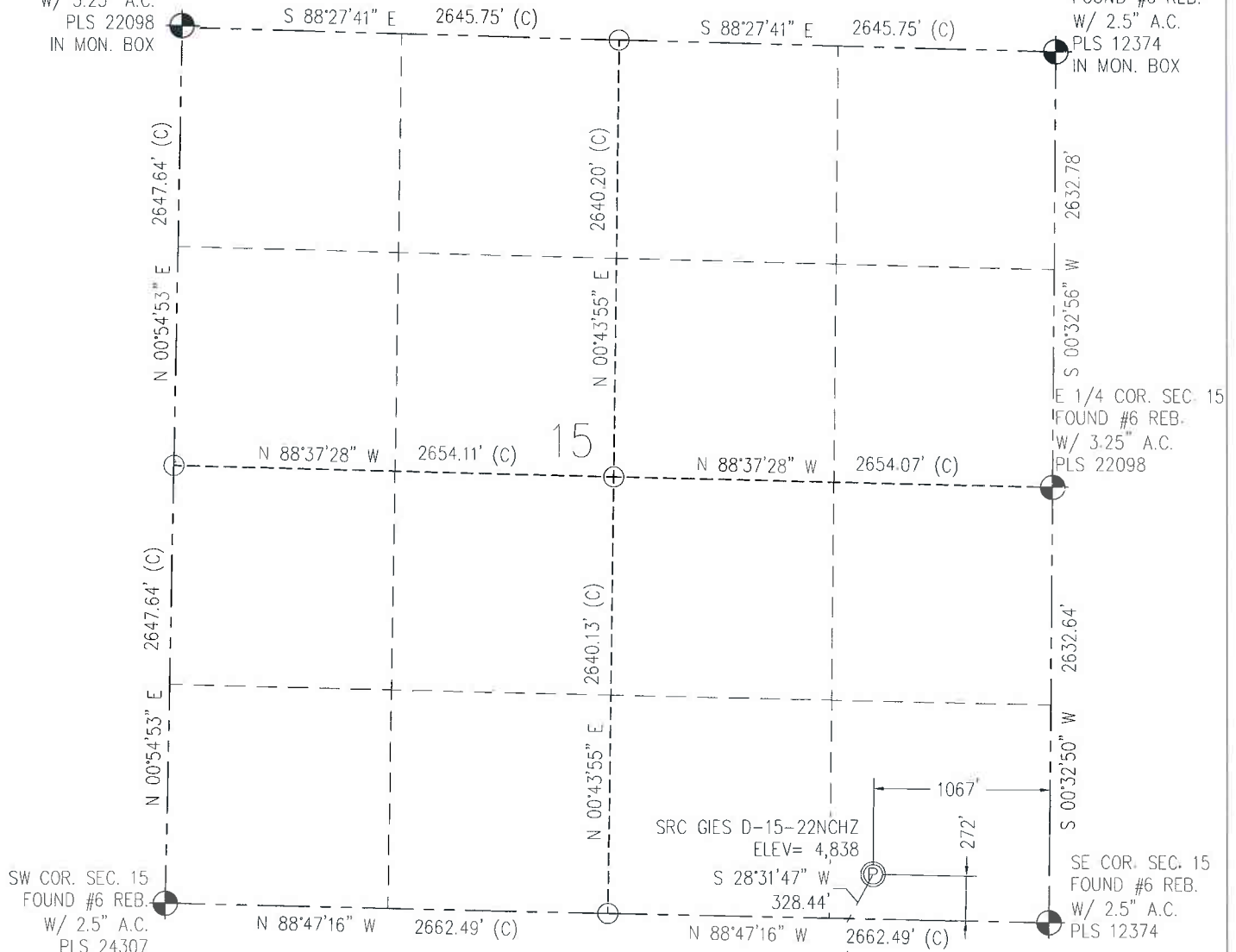
# WELL LOCATION CERTIFICATE

THIS MAP DOES NOT REPRESENT A BOUNDARY SURVEY

SECTION 15  
TOWNSHIP 7 NORTH  
RANGE 65 WEST

NW COR. SEC. 15  
FOUND #6 REB.  
W/ 3.25" A.C.  
PLS 22098  
IN MON. BOX

NE COR. SEC. 15  
FOUND #6 REB.  
W/ 2.5" A.C.  
PLS 12374  
IN MON. BOX



I HEREBY CERTIFY THAT THIS WELL LOCATION CERTIFICATE WAS PREPARED BY ME, OR UNDER MY DIRECT SUPERVISION, THAT THE FIELD WORK WAS COMPLETED ON 4/1/2014, THAT IT IS NOT A LAND SURVEY PLAT OR AN IMPROVEMENT SURVEY PLAT, AND THAT IT IS NOT TO BE RELIED UPON FOR ESTABLISHMENT OF FENCE, BUILDING, OR OTHER FUTURE IMPROVEMENT LINES.

Scale 1" = 1000 ft

## NOTES:

- 1) LAT/LONG SHOWN ARE BASED ON A GPS OBSERVATION (NAD83).
- 2) BEARINGS SHOWN ARE GRID BEARINGS OF THE COLORADO STATE PLANE COORDINATE SYSTEM, NORTH ZONE, NORTH AMERICAN DATUM 1983/2007.
- 3) GROUND ELEVATIONS ARE BASED ON A GPS OBSERVATION (NAVD 88 DATUM).
- 4) ALL DISTANCES SHOWN ARE FIELD MEASURED UNLESS OTHERWISE NOTED.
- 5) THE NEAREST EXISTING WELL IS: NONE IN 1/4 SECTION.
- 6) IMPROVEMENTS: SEE LOCATION DRAWING EXHIBIT FOR ALL VISIBLE IMPROVEMENTS WITHIN 600' OF WELL HEAD.
- 7) SURFACE USE: NATURAL AREA.
- 8) OPERATOR NAME: BRETT BIRCH.

SURFACE HOLE:  
LATITUDE: 40.567341° N  
LONGITUDE: 104.643546° W  
PDOP: 1.2  
1/4, 1/4: SE1/4SE1/4  
NEAREST PROPERTY LINE: 218' N

TARGET #1:  
LATITUDE: 40.566554° N  
LONGITUDE: 104.644121° W  
TARGET #2:  
LATITUDE: 40.565346° N  
LONGITUDE: 104.644125° W

BOTTOM HOLE:  
LATITUDE: 40.554943° N  
LONGITUDE: 104.644073° W

## LEGEND

- FOUND/SET SURVEY MONUMENT PER MONUMENT RECORD EXCEPTIONS NOTED
- CALCULATED SURVEY MONUMENT POSITION
- (C) CALCULATED DIMENSION

NOTICE: According to Colorado law you MUST commence any legal action based upon any defect in this W.L.C. within three years after you first discover such defect. In no event may any action based upon any defect in this W.L.C. be commenced more than ten years from this said date of the certification shown herein.



AARON A. DEMO  
Professional Land Surveyor Registration No. 38285  
State of Colorado  
FOR AND ON BEHALF OF BASELINE ENGINEERING CORP.

Completed  
4/30/2014

PROJECT #: SYN07N65W22-01

# WELL LOCATION CERTIFICATE

THIS MAP DOES NOT REPRESENT A BOUNDARY SURVEY

SECTION 15  
TOWNSHIP 7 NORTH  
RANGE 65 WEST

NW COR. SEC. 22  
FOUND #6 REB.  
W/ 2.5" A.C.  
PLS 24307

NE COR. SEC. 22  
FOUND #6 REB.  
W/ 2.5" A.C.  
PLS 12374

W 1/4 COR. SEC. 22  
FOUND #6 REB. W/ 2.5" A.C.  
PLS 12374  
IN MON BOX

C 1/4 COR. SEC. 22  
FOUND #6 REB.  
W/ 2.5" AC  
PLS 12374

E 1/4 COR. SEC. 22  
FOUND #6 REB.  
W/ 2.5" A.C.  
PLS 12374

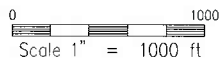
SW COR. SEC. 22  
FOUND #6 REB.  
W/ 2.5" AC  
PLS 12374

SE COR. SEC. 22  
FOUND #6 REB.  
W/ 2.5" AC  
PLS 12374



IN ACCORDANCE WITH A REQUEST FROM CRAIG RASMUSON - SYNERGY RESOURCES, BASELINE ENGINEERING CORP. HAS DETERMINED THE LOCATION OF THE SRC GIES D-15-22NCHZ TO BE 272' FSL AND 1067' FEL, AS MEASURED AT NINETY (90) DEGREES FROM THE SECTION LINE OF SECTION 15, TOWNSHIP 7 NORTH, RANGE 65 WEST AND THE BOTTOM HOLE LOCATION TO BE 470' FSL AND 1204' FEL OF SECTION 22, TOWNSHIP 7 NORTH, RANGE 65 WEST, 6TH PRINCIPAL MERIDIAN, WELD COUNTY, COLORADO.

I HEREBY CERTIFY THAT THIS WELL LOCATION CERTIFICATE WAS PREPARED BY ME, OR UNDER MY DIRECT SUPERVISION, THAT THE FIELD WORK WAS COMPLETED ON 4/1/2014, THAT IT IS NOT A LAND SURVEY PLAT OR AN IMPROVEMENT SURVEY PLAT, AND THAT IT IS NOT TO BE RELIED UPON FOR ESTABLISHMENT OF FENCE, BUILDING, OR OTHER FUTURE IMPROVEMENT LINES.



## NOTES:

- 1) LAT/LONG SHOWN ARE BASED ON A GPS OBSERVATION (NAD83).
- 2) BEARINGS SHOWN ARE GRID BEARINGS OF THE COLORADO STATE PLANE COORDINATE SYSTEM, NORTH ZONE, NORTH AMERICAN DATUM 1983/2007
- 3) GROUND ELEVATIONS ARE BASED ON A GPS OBSERVATION (NAVD 88 DATUM).
- 4) ALL DISTANCES SHOWN ARE FIELD MEASURED UNLESS OTHERWISE NOTED.
- 5) THE NEAREST EXISTING WELL IS: NONE IN 1/4 SECTION.
- 6) IMPROVEMENTS: SEE LOCATION DRAWING EXHIBIT FOR ALL VISIBLE IMPROVEMENTS WITHIN 600' OF WELL HEAD.
- 7) SURFACE USE: NATURAL AREA.
- 8) OPERATOR NAME: BRETT BIRCH

NOTICE: According to Colorado law you MUST commence any legal action based upon any defect in this WLC within three years after you first discover such defect. In no event may any action based upon any defect in this WLC be commenced more than ten years from this said date of the certification show hereon.

SURFACE HOLE:  
LATITUDE: 40.567341° N  
LONGITUDE: 104.643546° W  
PDOP: 1.2  
1/4, 1/4: SE1/4SE1/4  
NEAREST PROPERTY LINE: 218' N  
BOTTOM HOLE:  
LATITUDE: 40.554943° N  
LONGITUDE: 104.644073° W

TARGET #1:  
LATITUDE: 40.566554° N  
LONGITUDE: 104.644121° W  
TARGET #2:  
LATITUDE: 40.565346° N  
LONGITUDE: 104.644125° W

## LEGEND

- - FOUND/SET SURVEY MONUMENT PER MONUMENT RECORD EXCEPTIONS NOTED
- - CALCULATED SURVEY MONUMENT POSITION
- (C) - CALCULATED DIMENSION



AARON A. DEMO  
Professional Land Surveyor Registration No. 38285  
State of Colorado  
FOR AND ON BEHALF OF BASELINE ENGINEERING CORP.

Completed  
4/30/2014

PROJECT #: SYN07N65W22-01