



RESERVOIR PERFORMANCE MONITOR

Baker Atlas

File No:	Company	WPX ENERGY
CH088606	Well	C&C ENERGY GM 523-13
API No:	Field	GRAND VALLEY
05045222610000	County	GARFIELD
	State	COLORADO

13 75 96W	Location	SHL: 290' FSL & 966' FWL (SEC 12) BHT: 2512' FNL & 209' FWL (SWNW SEC 13)
GM 24-12 PAD		
H&P 318	SEC 13	TWP 7S RGE 96W

Permanent Datum	GL	Elevation	5141 ft	Other Services
Log Measured From	KB	24 ft	Above P. D.	BOND LOG
Drill Measured From	KELLY BUSHING			Elevations
				KB 5165 ft
				DF
				GL 5141 ft

Date	25/JUL/14
Run	ONE
Service Order	US088606J
Depth Driller	6928 ft
Depth Logger	6857 ft
Bottom Logged Interval	6847 ft
Top Logged Interval	3647 ft
Time Started	1130
Time Finished	1630
Operator Rig Time	5 HRS
Type of Fluid in Hole	WATER
Fluid Density	NA
Salinity	NA
Fluid Level	64 ft
Logged Cement Top	NA
Wellhead Pressure	0 psi
Maximum Hole Deviation	NA
Nominal Logging Speed	10 fpm
Maximum Recorded Temperature	202 degF
Reference Log	BAKER HUGHES BOND LOG
Reference Log Date	26/JUL/14
Equipment No.	4271
Recorded By	FLOYD RENEAU
Witnessed By	JEFF BRADY

- FOLD HERE

In making interpretations of logs, our employees will give the customer the benefit of their best judgement. But since all interpretations are opinions based on inferences from electrical or other measurements, we cannot, and we do not guarantee the accuracy or correctness of any interpretation. We shall not be liable or responsible for any loss, cost, damages, or expenses whatsoever incurred or sustained by the customer resulting from any interpretation made by any of our employees.

Borehole Record		
Bit Size	From	To
13.5 in	24 ft	1476 ft
8.75 in	1476 ft	6928 ft

Casing Record				
Size	Weight	Grade	From	To
9.625 in			24 ft	1476 ft
4.5 in	11.6 lbm/ft	I-80	24 ft	6928 ft

Remarks

All data on this log is shifted and depth matched using the Gamma Ray curve to the Baker Hughes bond log dated 7/25/2014 at the client's request.

The amount of linear shift is 12 feet.

Logged in PNC-3D mode.

BHT = 202°F

SJ = 3308'-3330'

Equipment Data

Run	Trip	Tool	Series Number	Serial Number	Position
1	1	TEMP	8255XA	Z120516	FREE
1	1	RPM	8281FA	10460082	FREE
1	1	RPM	8281PA	10160383	FREE
1	1	RPM	8281EA	10190984	FREE
1	1	GR	2812LA	10274385	FREE
1	1	TEL/CCL	8248ED	10296408	FREE
1	1	PCM	8250EA	10297894	FREE

**MAIN SECTION
PNC 3-D MODE**

SPL PROCESSING

MEASUREMENT TYPE	PARAMETER	VALUE	UNITS	TOP	BOTTOM
PNC Porosity	Borehole	Cased		3628.835	6858.335
PNC Porosity	Borehole Size	8.750	inch	3628.835	6858.335
PNC Porosity	Casing Size	4.500	inch	3628.835	6858.335
PNC Porosity	Gas Filled	Non Gas Filled		3628.835	6858.335
PNC Porosity	Matrix	Sandstone		3628.835	6858.335
TPS Pressure	Temperature Corr. Source	Fixed (72.00)	degF	3628.835	6858.335

DEPTH OFFSETS

(for Acquired Curves)

SERIES	DEPTH OFFSET	ACQUIRED CURVES
8248ED	-26.519	FLTM
8248ED	-24.519	CCL CHV
2812LA	-21.969	GR
8281XA	-12.702	HVC3Q0 SEQ3 AMA3 AML3 BKX CXS CPT3Q0 CPT3Q2 CPT3Q3 CPT3Q4 ET3 IXS MCS3 MCS3Q0 QCAL3 RGN3 RICX SDA3

		SDL3	SGA3	SGL3	STA3	XS	ASPEC3
		AMB3	AMF3	CHF3	IXSC	IXSN	RATO23
		RICXC	RIN13C	RIN23	RIN23C	SD3D	SG3D
		SGB3	SGF3	WDTH3	CXSR	IXSR	XSR
		RICXR					
8281XA	-12.291	HVC2Q0	SEQ2	AMA2	AMB2	AMF2	AML2
		BKL	CHF2	CLS	CPT2Q0	CPT2Q2	CPT2Q3
		CPT2Q4	ET2	ILS	LS	MCS2	MCS2Q0
		QCAL2	RGN2	RICL	RONE23	RTWO23	SDA2
		SDL2	SGA2	SGB2	SGF2	SGK2	SGL2
		STA2	ASPEC2	ILSC	ILSN	WDTH2	RICLC
		CLSR	ILSR	LSR	RICLR		
8281XA	-12.041	CPRS	HVC1Q0	MV	SEQ	SEQ1	AMA1
		AMB1	AME1	AMF1	AML1	BKS	CHF1
		CSS	CORB	CORF	CPT1Q0	CPT1Q2	CPT1Q2A
		CPT1Q2B	CPT1Q2C	CPT1Q3	CPT1Q4	CPT1Q5	ET1
		G1	G2	GE1S	GE2S	ISS	MCS1
		MCS1Q0	QA1	QCAL1	QM1	RATO	RATO13
		RBOR	RGN1	RICS	RIN	RONE	RPOR
		RTWO	RIN13	RONE13	RTWO13	SALB	SC1
		SDA1	SDL1	SGA1	SGB1	SGBC	SGE1
		SGF1	SGFC	SGK1	SGL1	SS	SS2
		STA1	PD1S	PD2S	PD3S	MD1S	MD2S
		MD3S	DG1S	DG2S	DG3S	PD1M	PD2M
		PD3M	MD1M	MD2M	MD3M	DG1M	DG2M
		DG3M	MVS	MA	MVM	FILV	IAM
		TA	PVM	PVS	IAS	SSTAT	QPD1
		QPD2	QPD3	QMD1	QMD2	QMD3	QDG1
		QDG2	QDG3	QMA	QTA	QFILV	QMV
		QPV	QIA	DERR	DCNT	QPK1	QSA1
		PKS1	ASPEC1	H0C	FE2XC	ISSC	RINC
		ISSN	RDEN	WDTH1	RICSC	CSSR	G1R
		G2R	ISSR	SSR	SS2R	RATOR	RATO13R
		RBORR	RICSR	RINR	RIN13R	RONER	RPORR
		RTWOR					
8255XA	-0.792	PTFS	PTMS				
8255XA	-0.775	SPF1	SPFQ	TSCP	TSDP		
8255XA	0.000	DTEM	TEMP	TNF			
SYSTEM	0.000	TEN	TTEN				

Created by : RPM9, v5.3.1.0

Plotted by : PlotMgr, v5.4.504

Company : WPX ENERGY

Well : C&C ENERGY GM 523-13

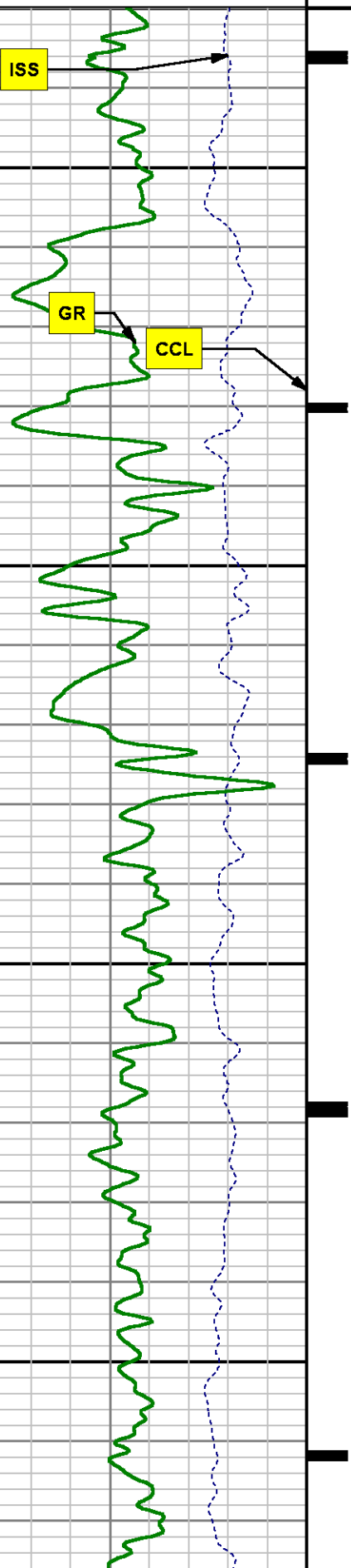
File Name : D:\WELLDATA\WPX\GM 523-13\rpm523\MAIN.XTF

Mode : PlotMgr 5.4.504

Interval : 3630.00 - 6858.00 feet UP

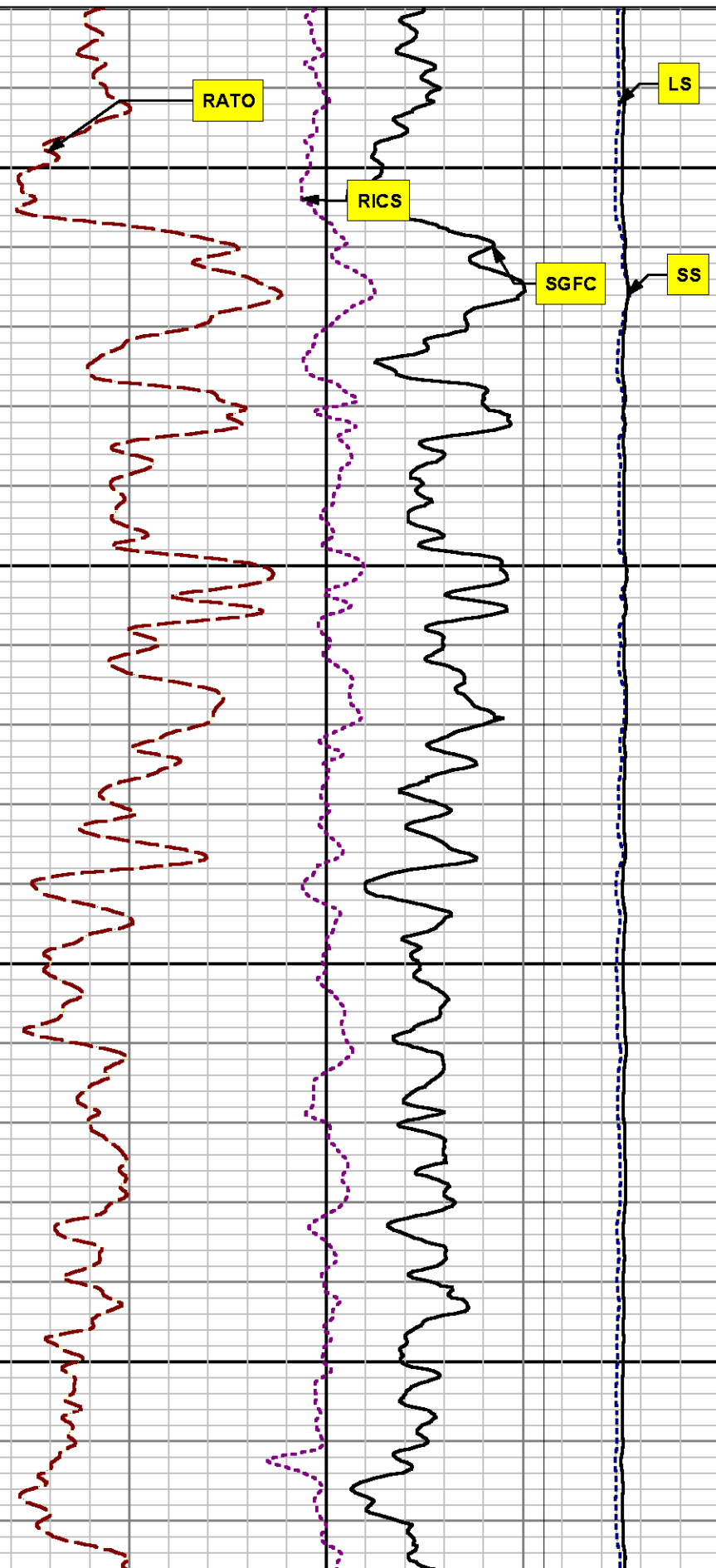
Created : 7/25/2014 12:38:21 PM





3700

3800



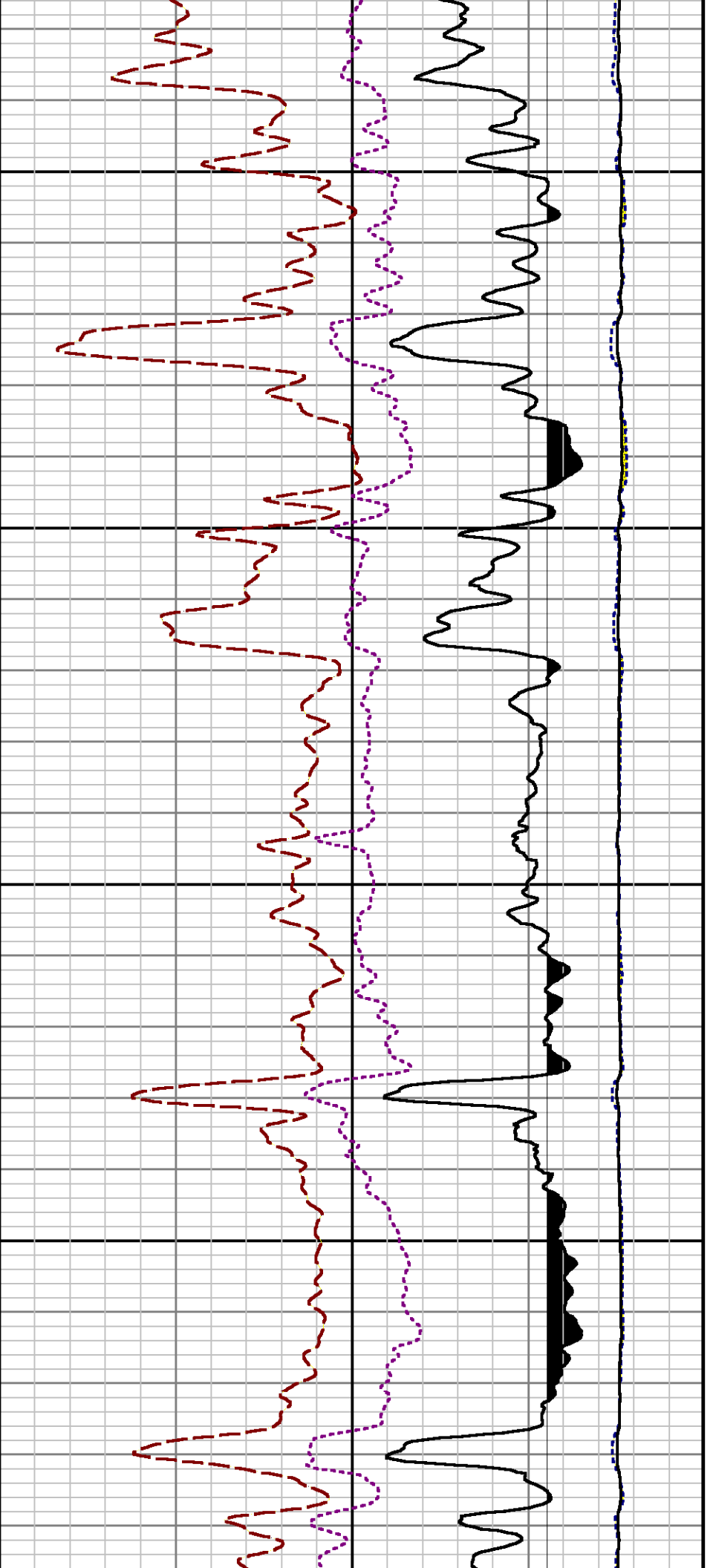
RATO

RICS

SGFC

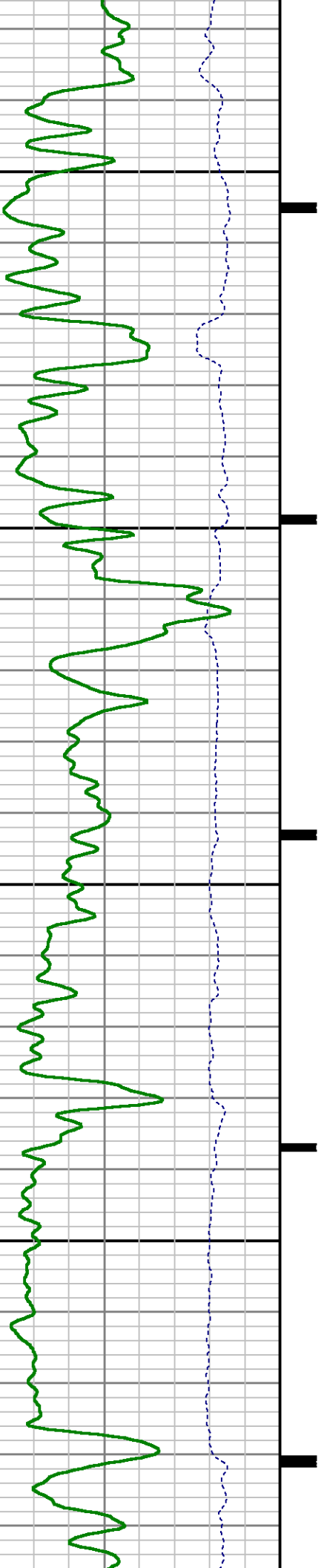
LS

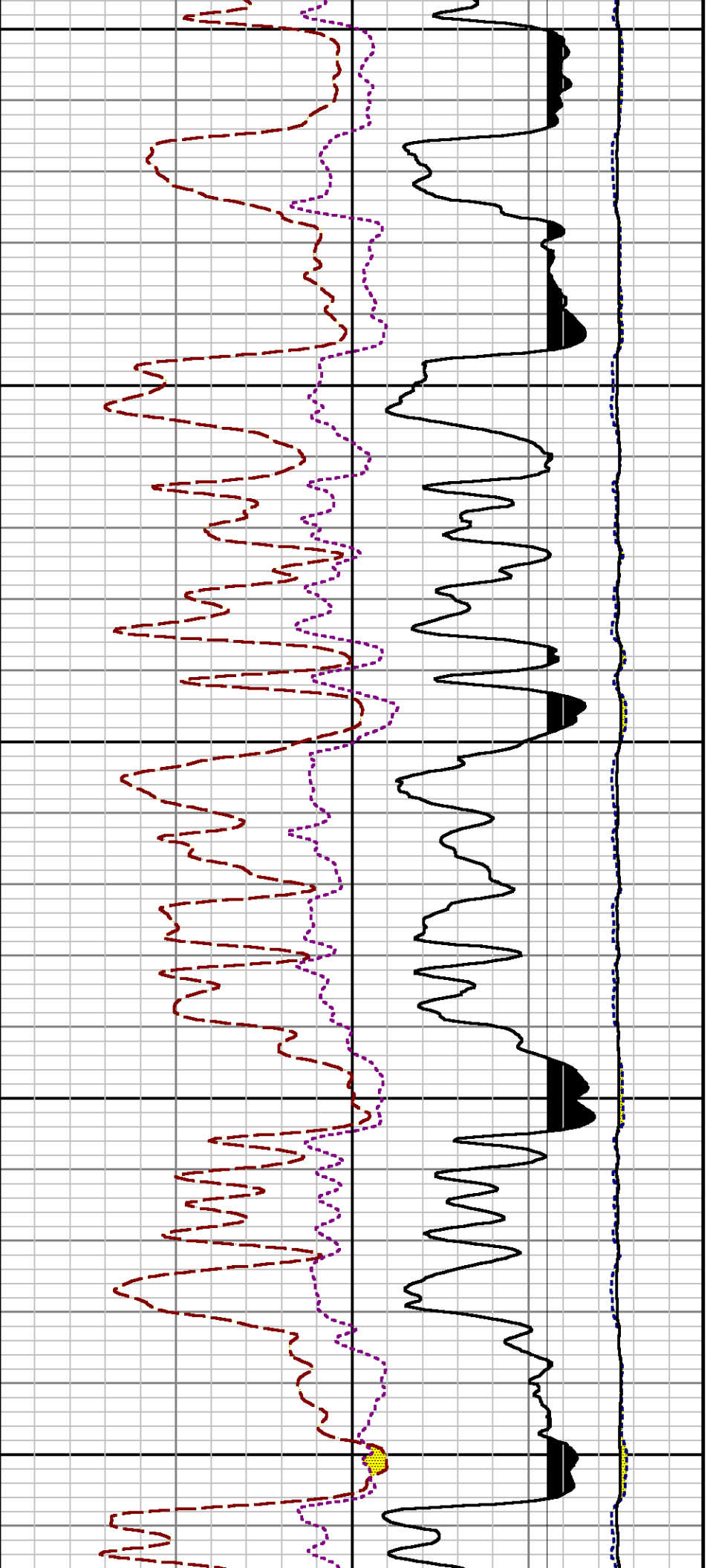
SS



3900

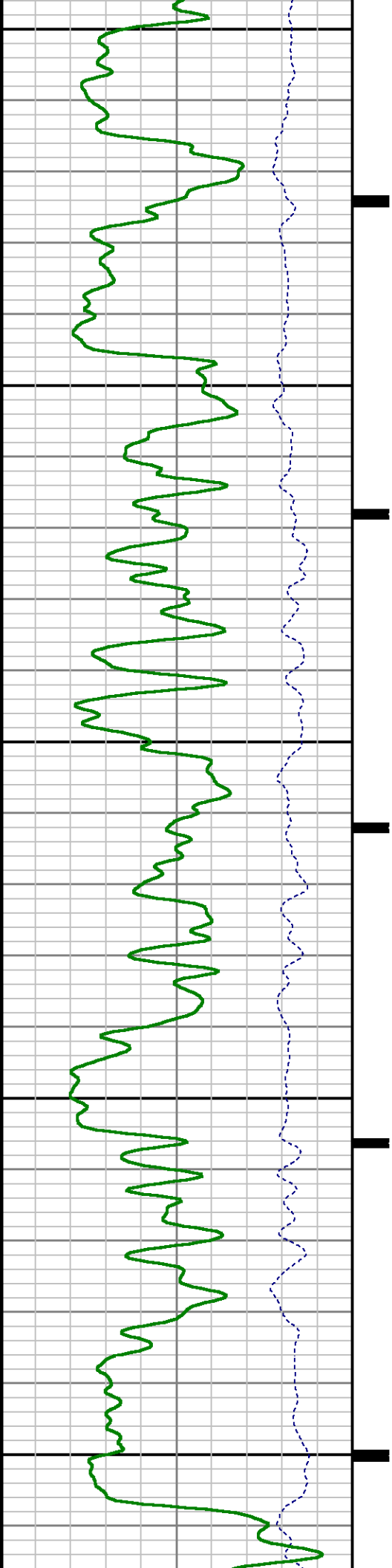
4000

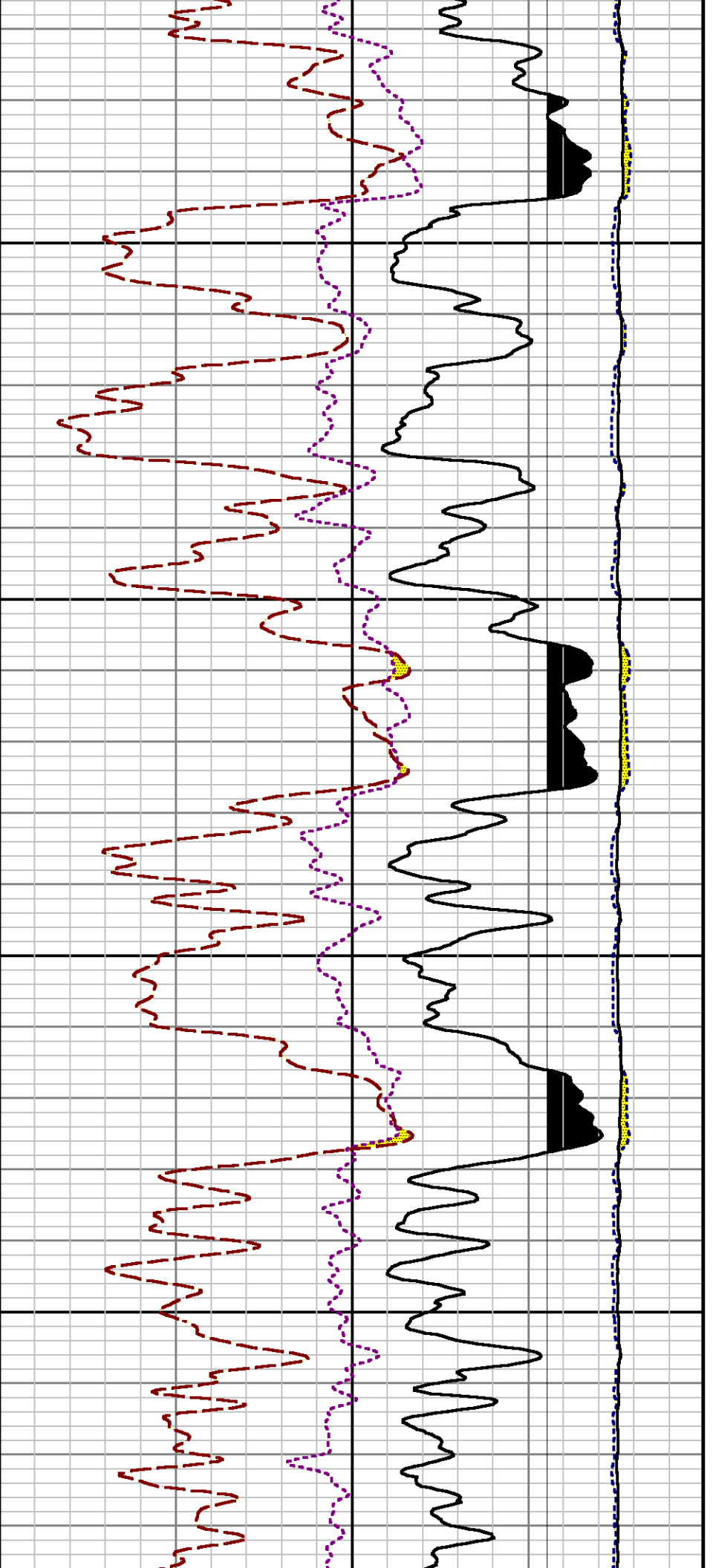




4100

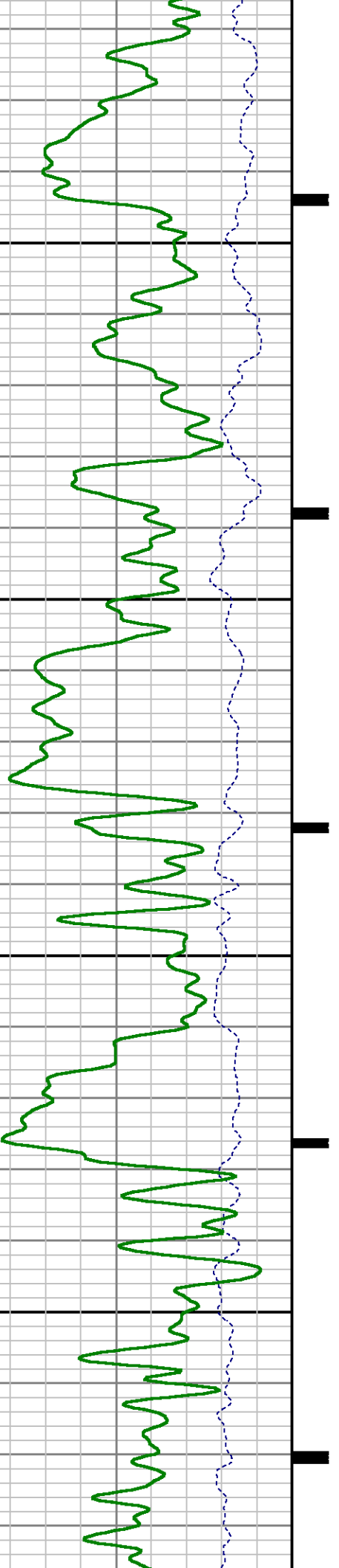
4200

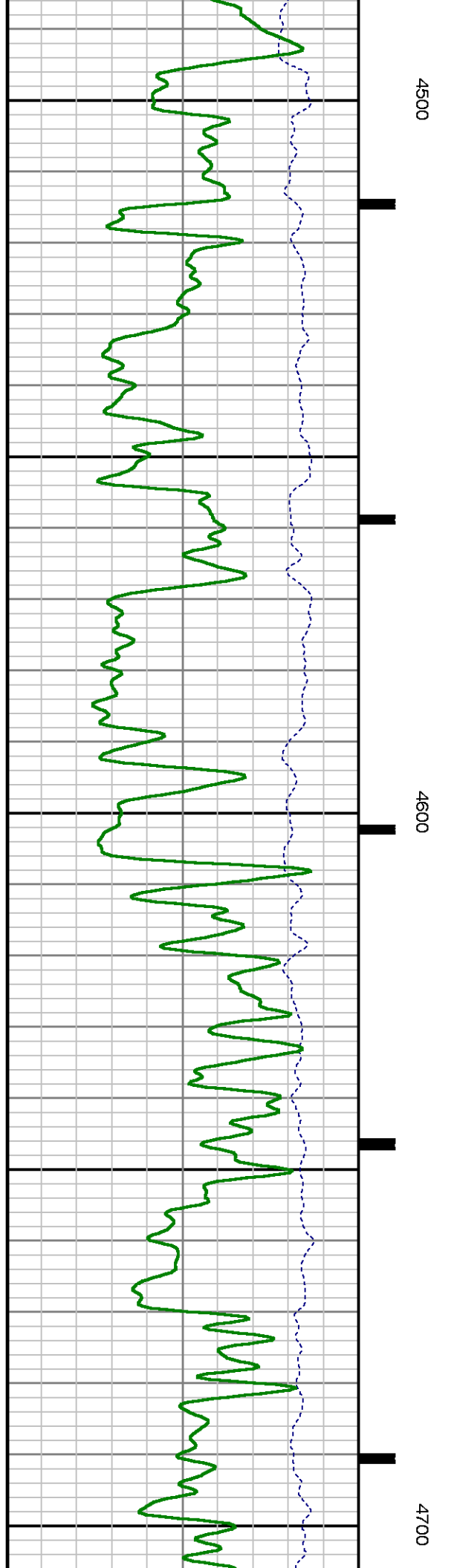
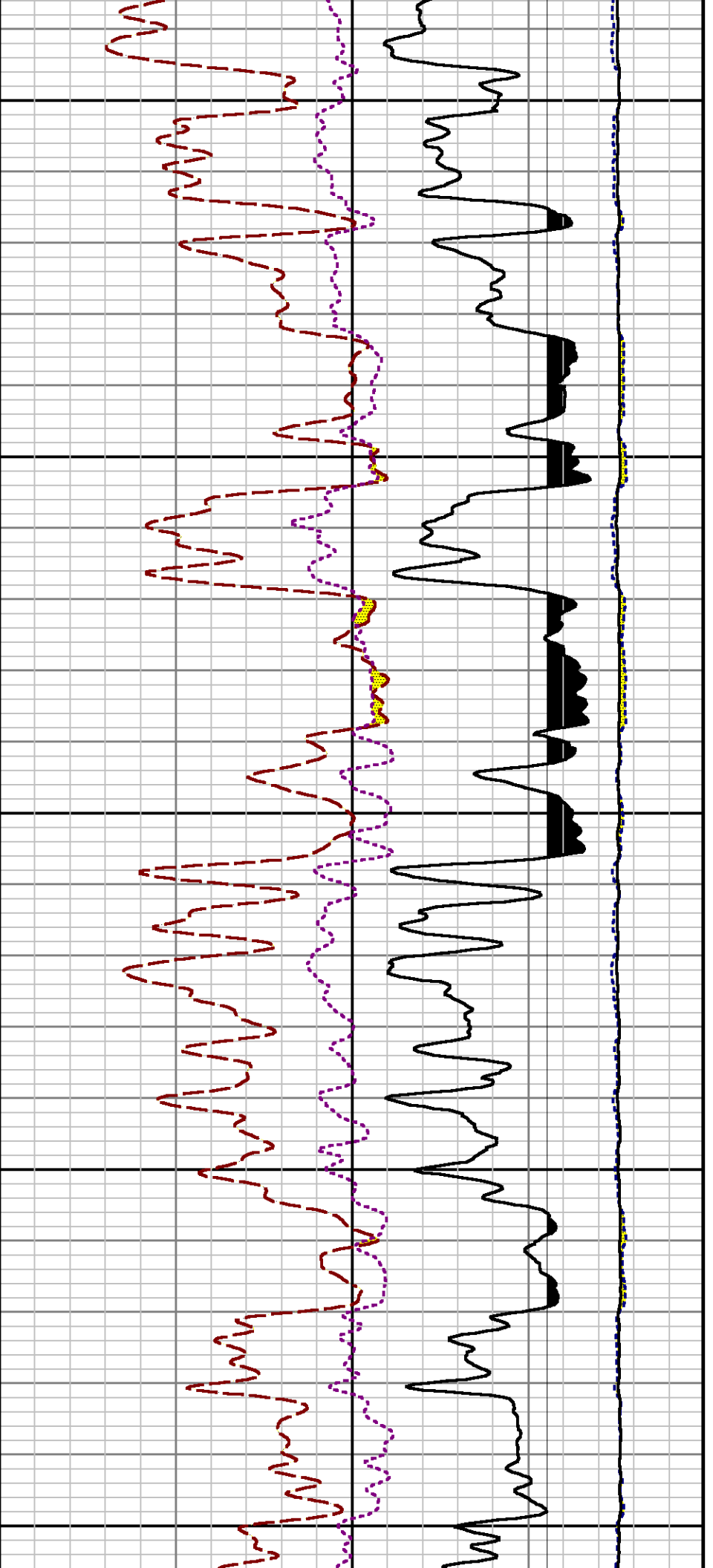


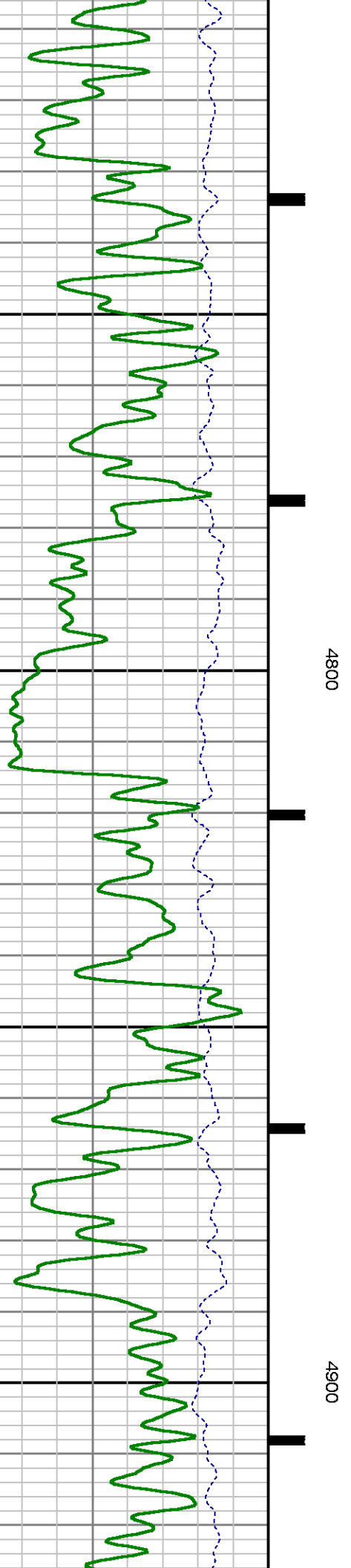
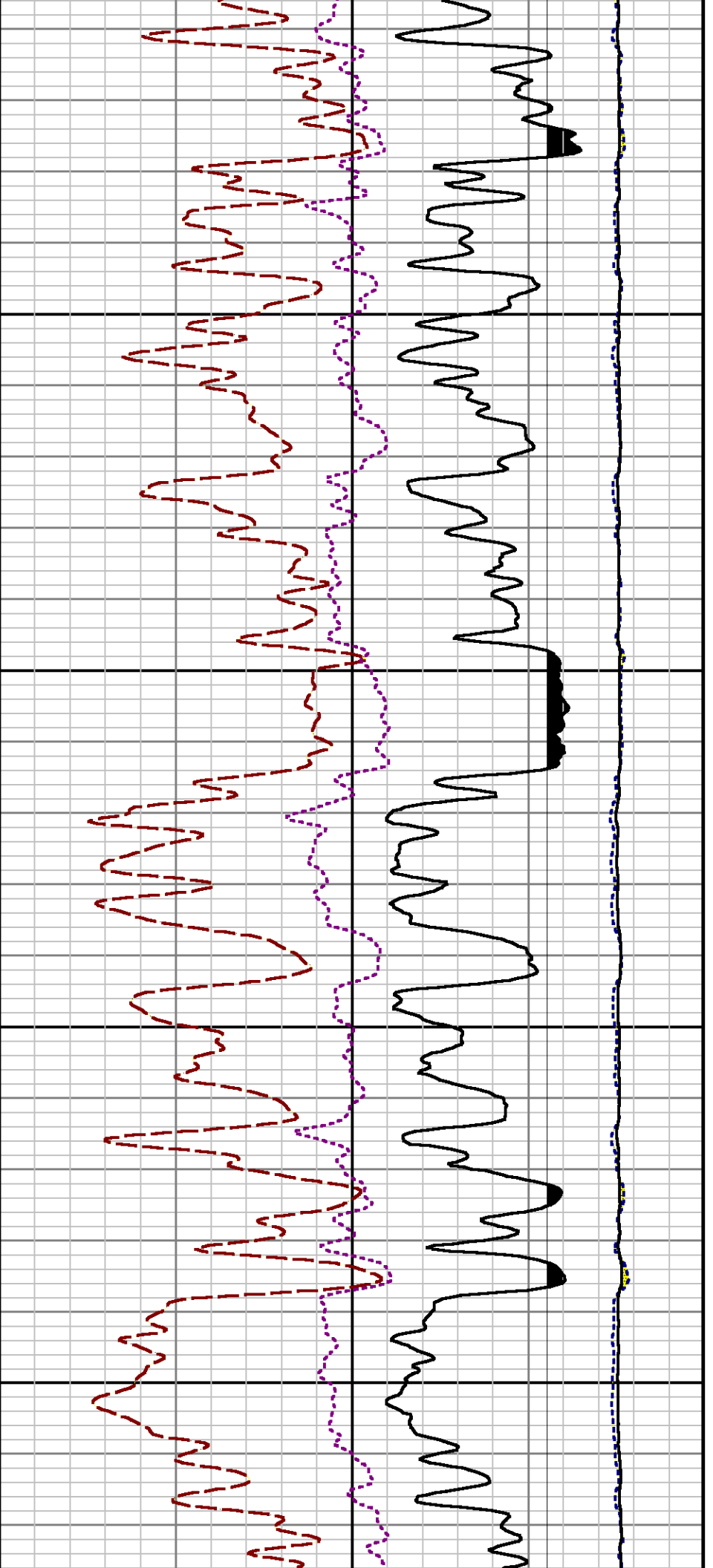


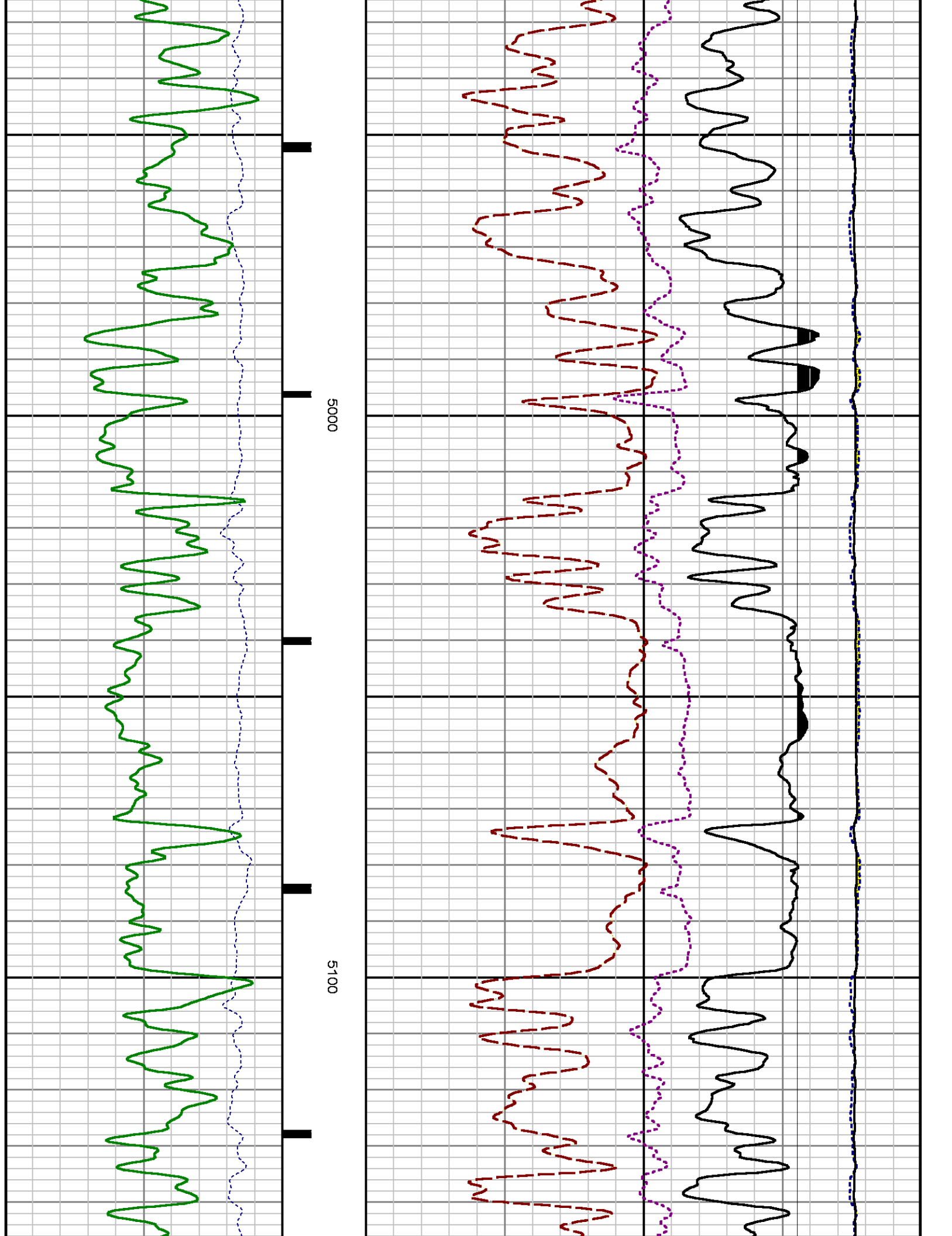
4300

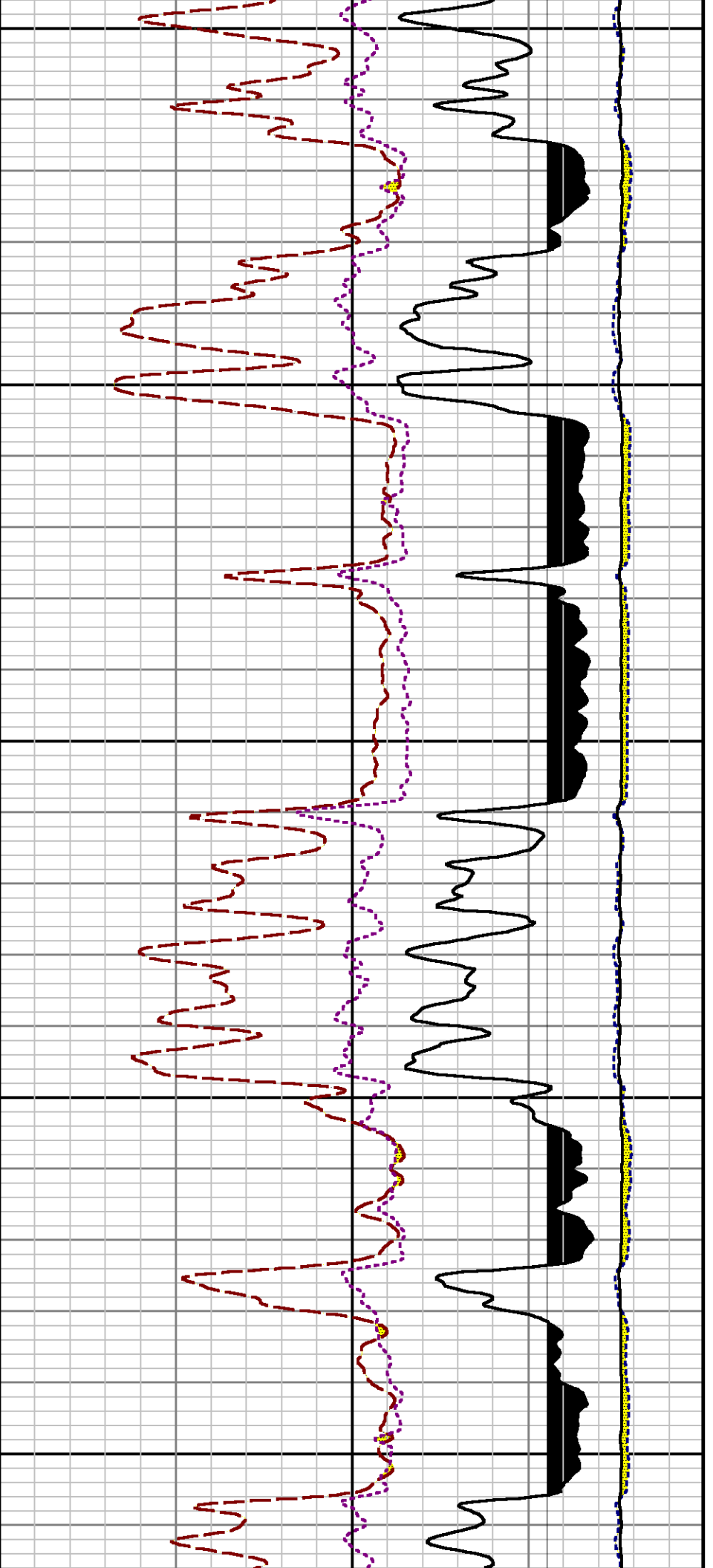
4400





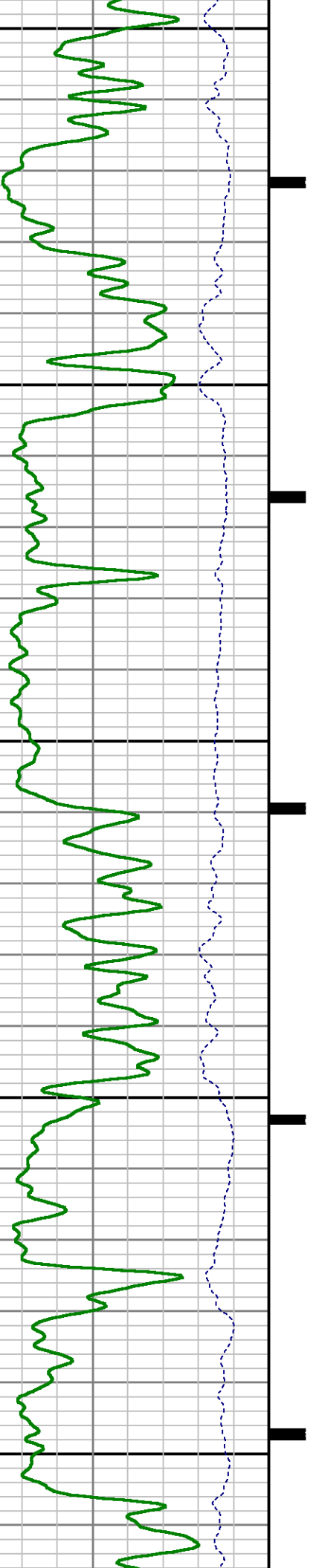


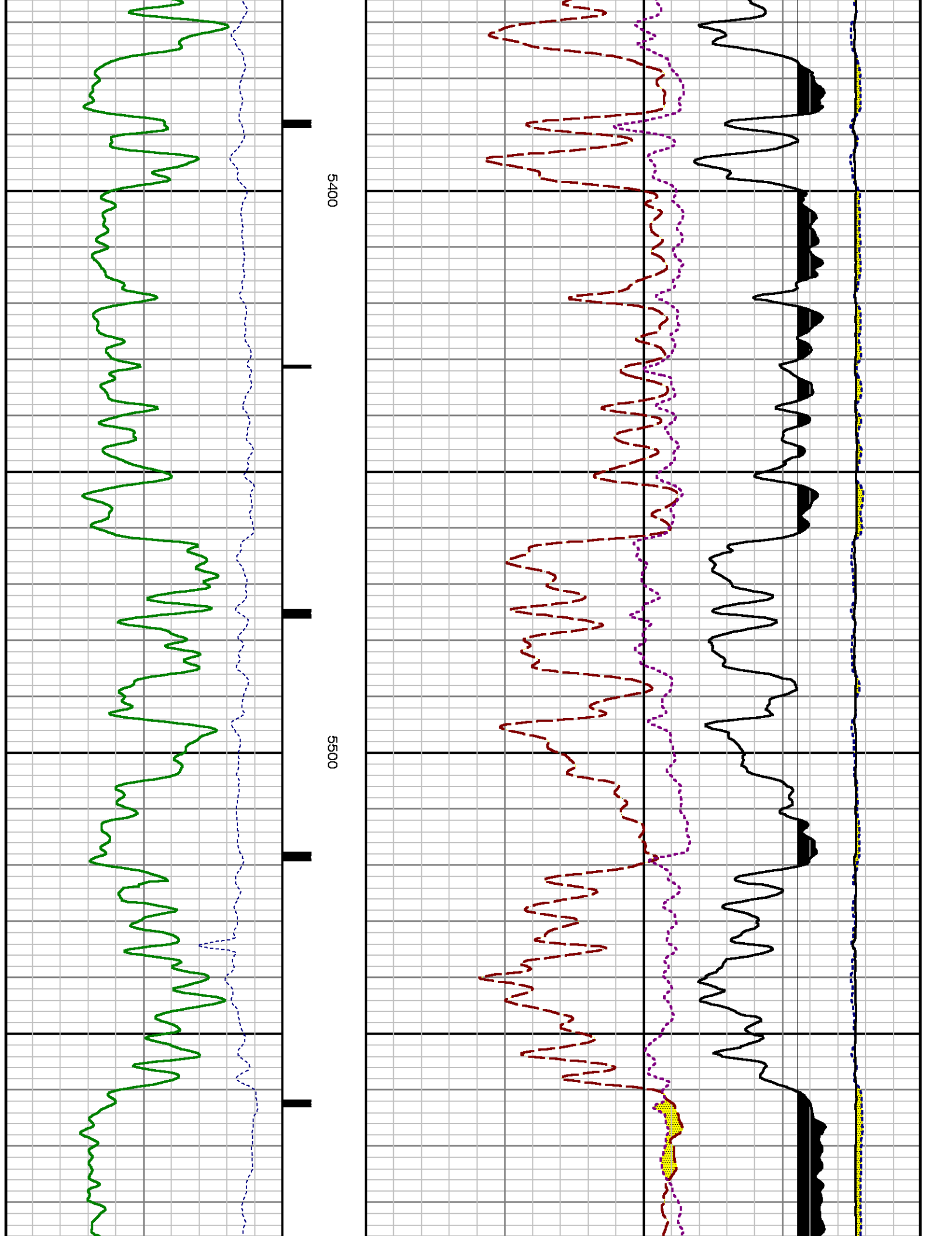


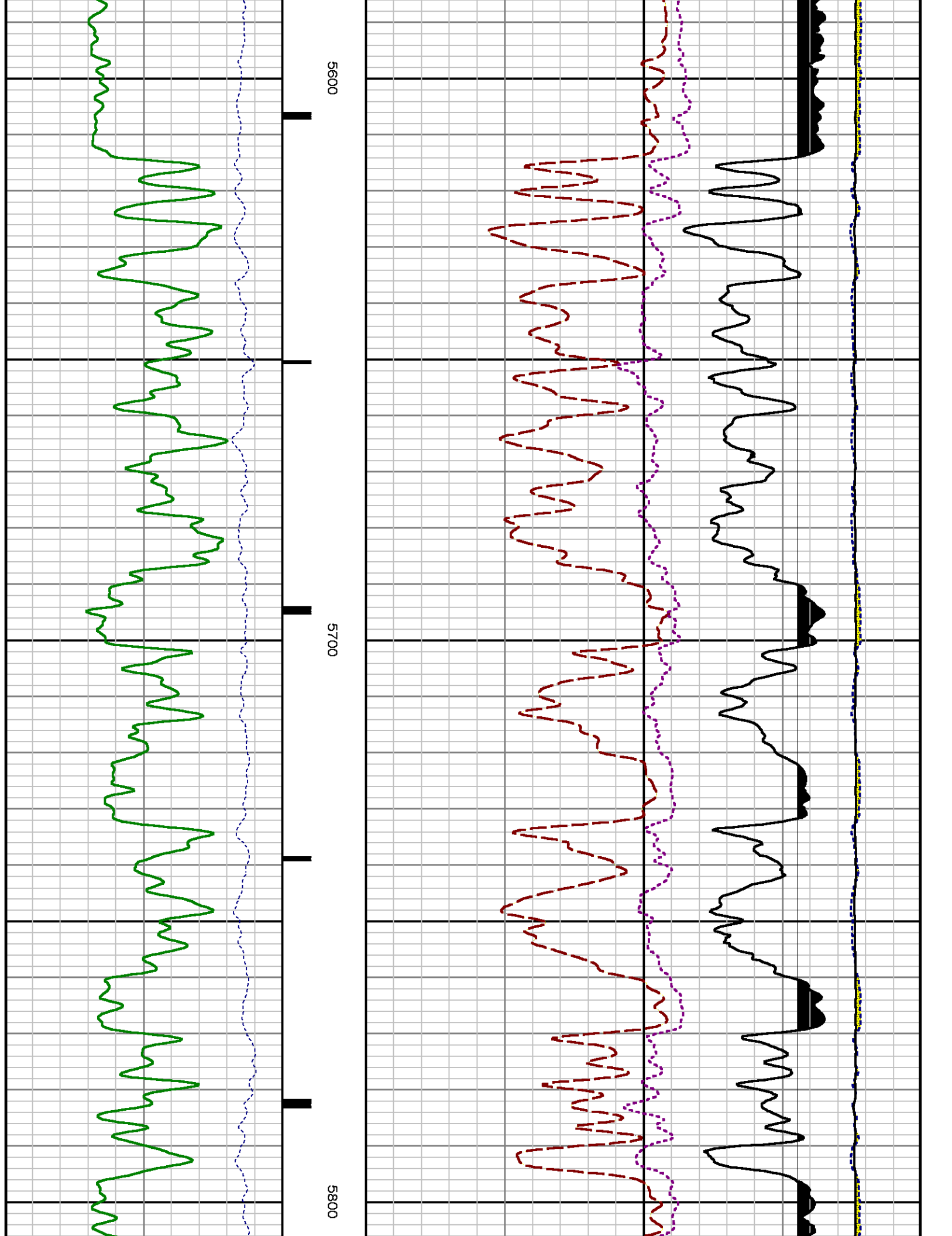


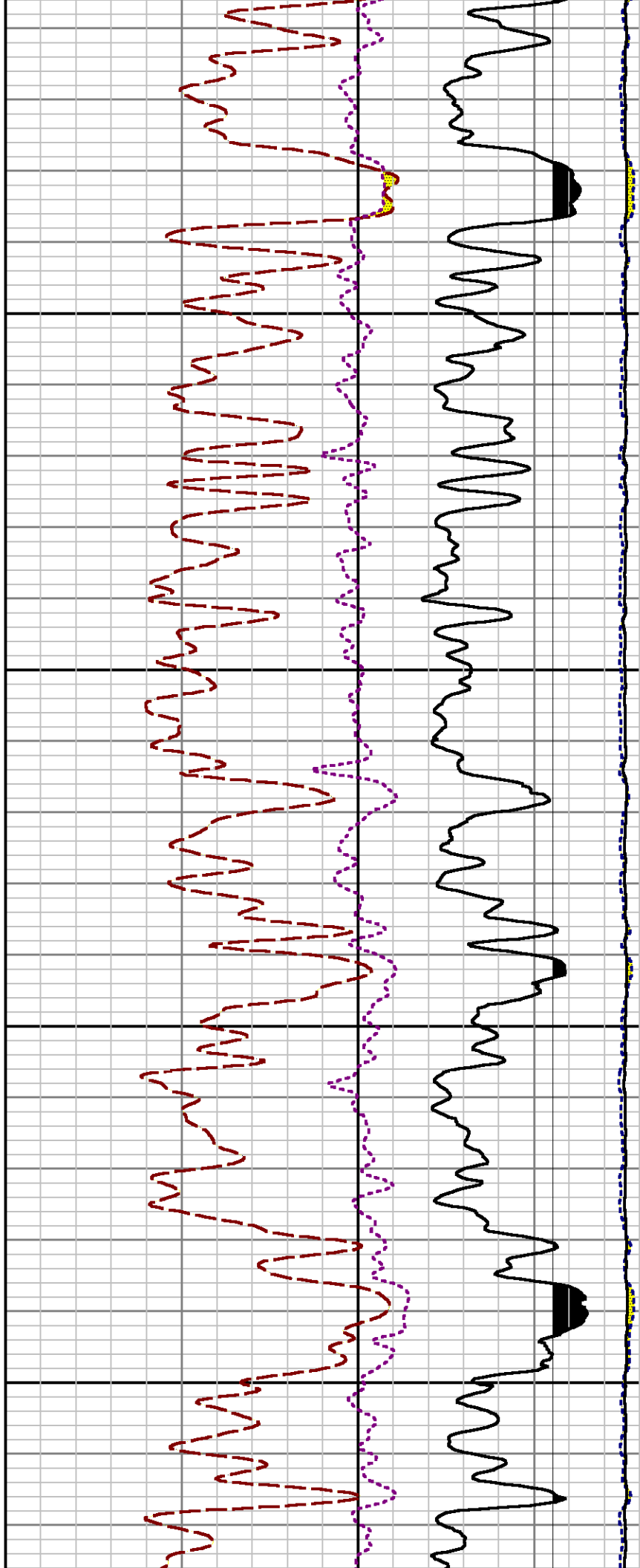
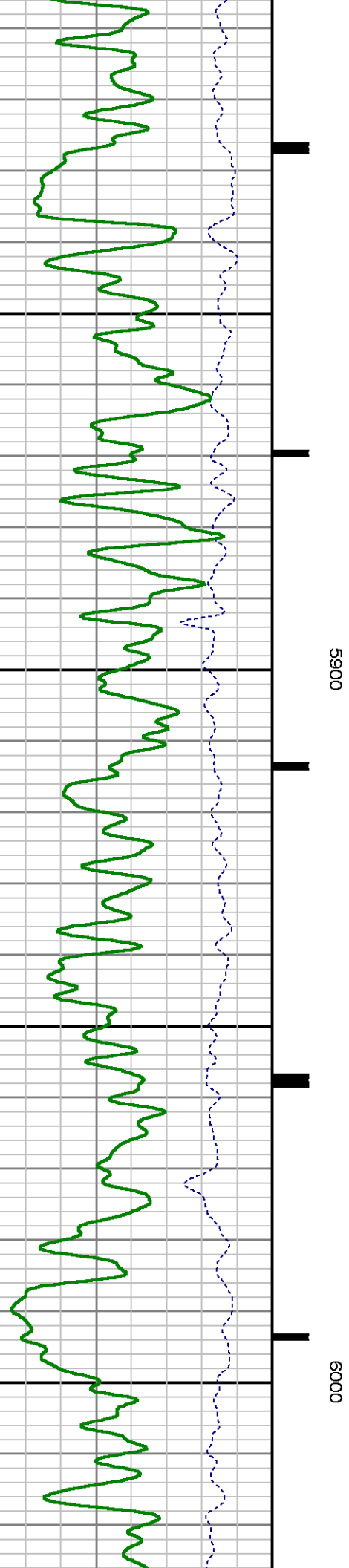
5200

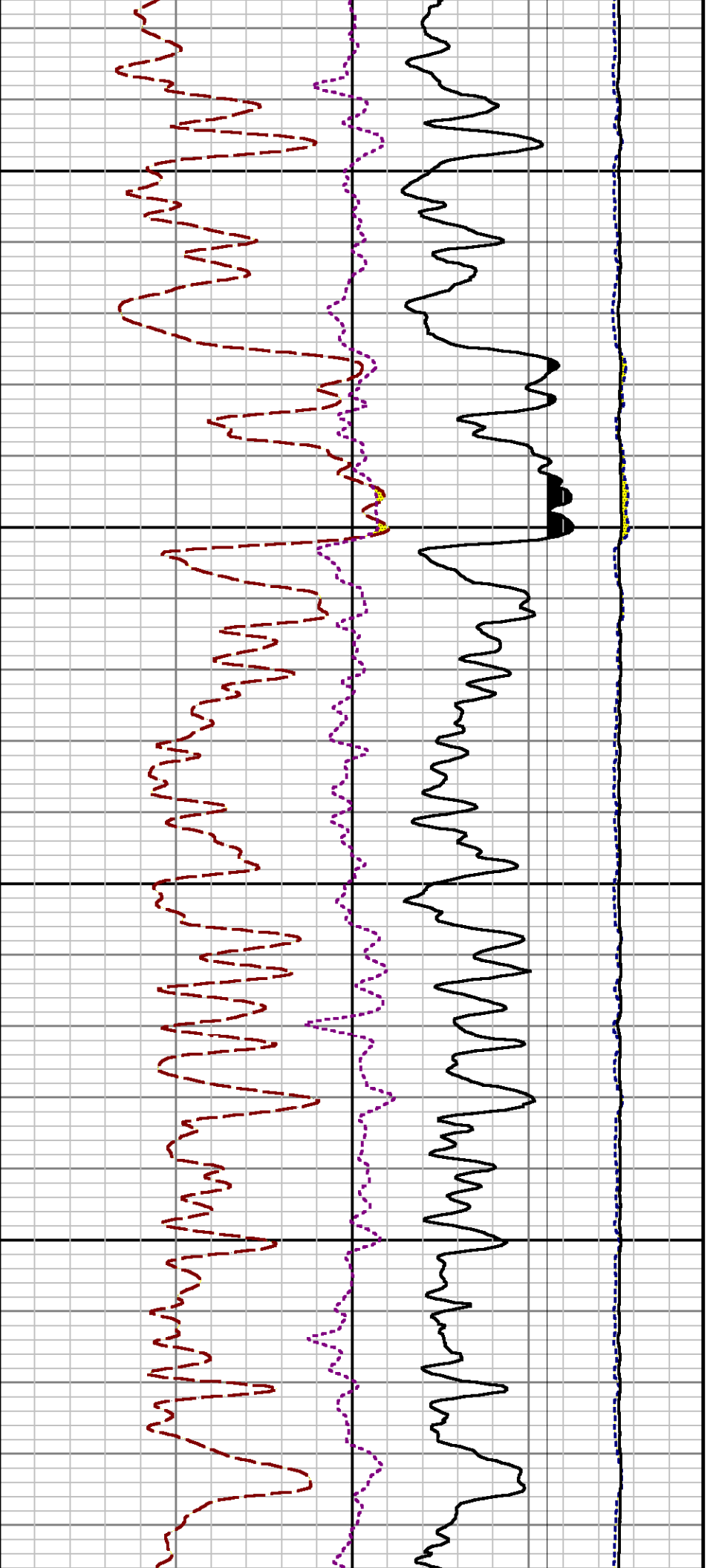
5300





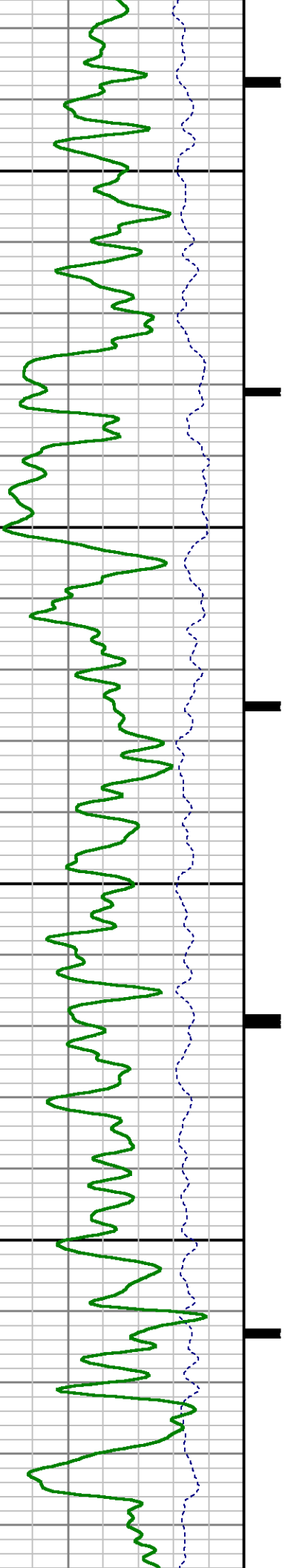


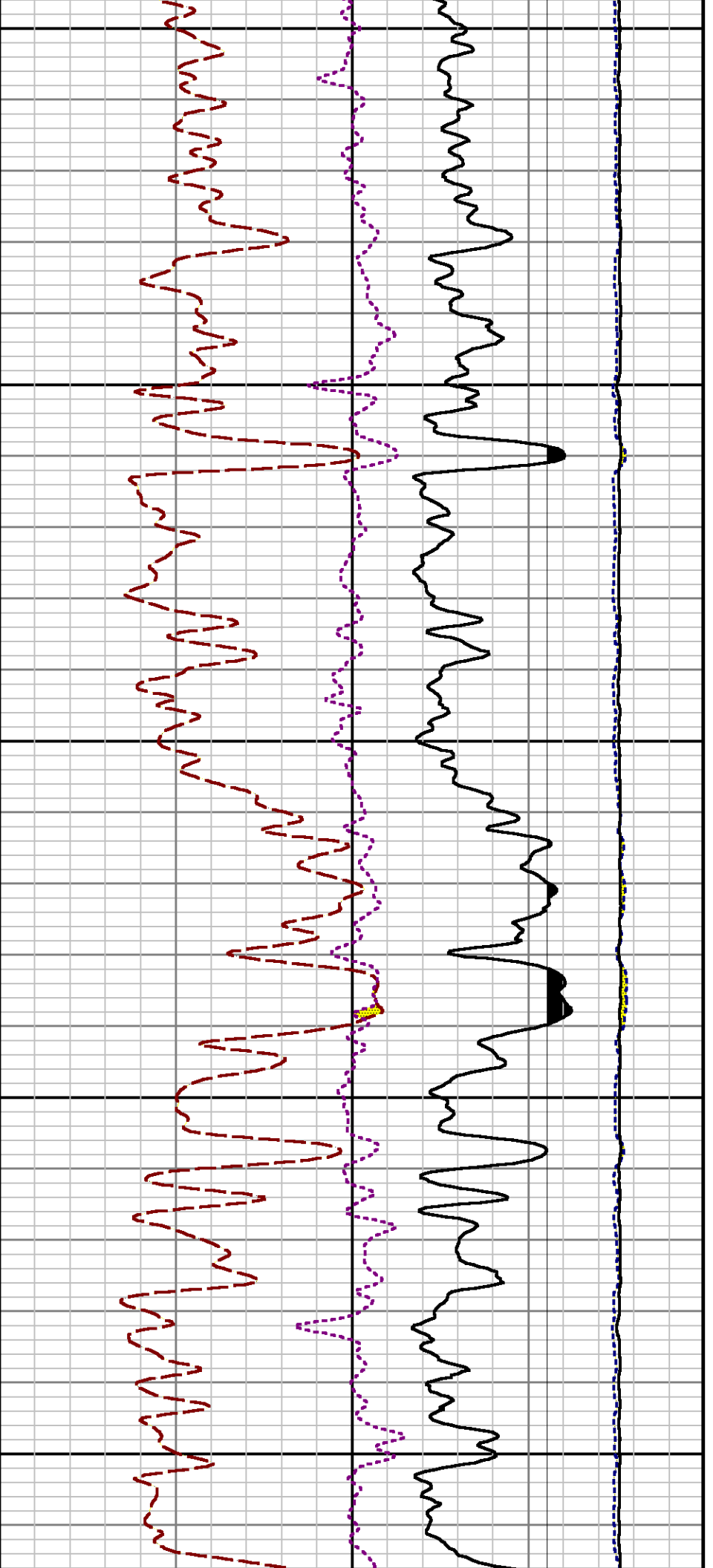




6100

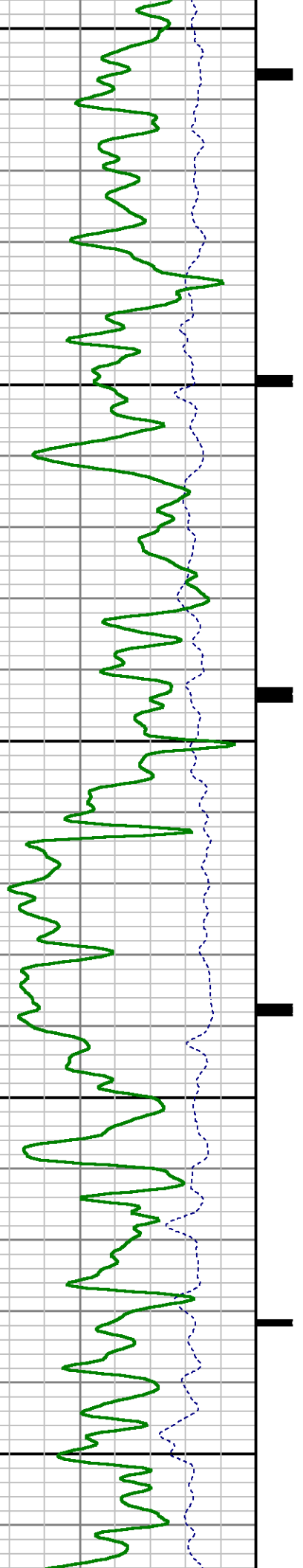
6200

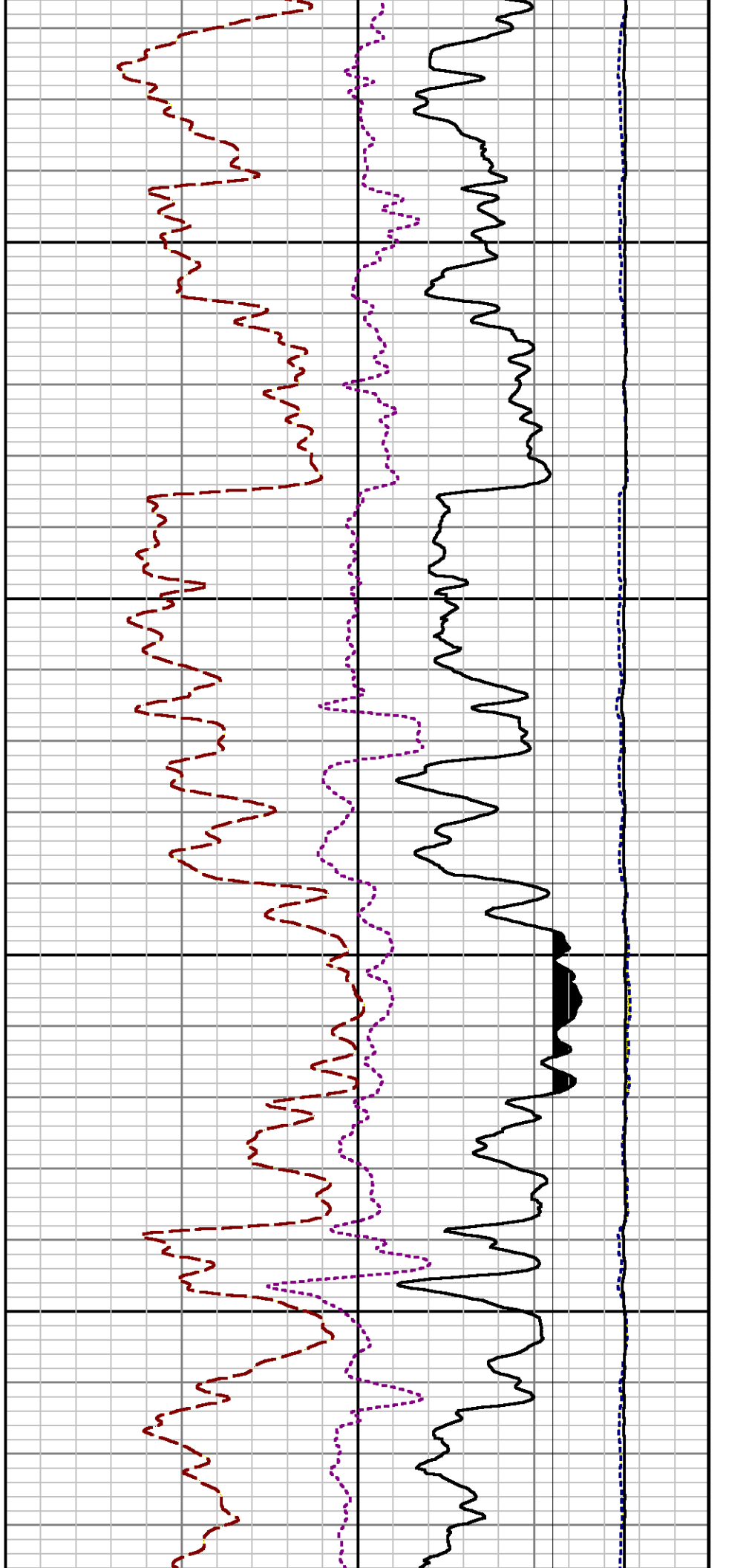
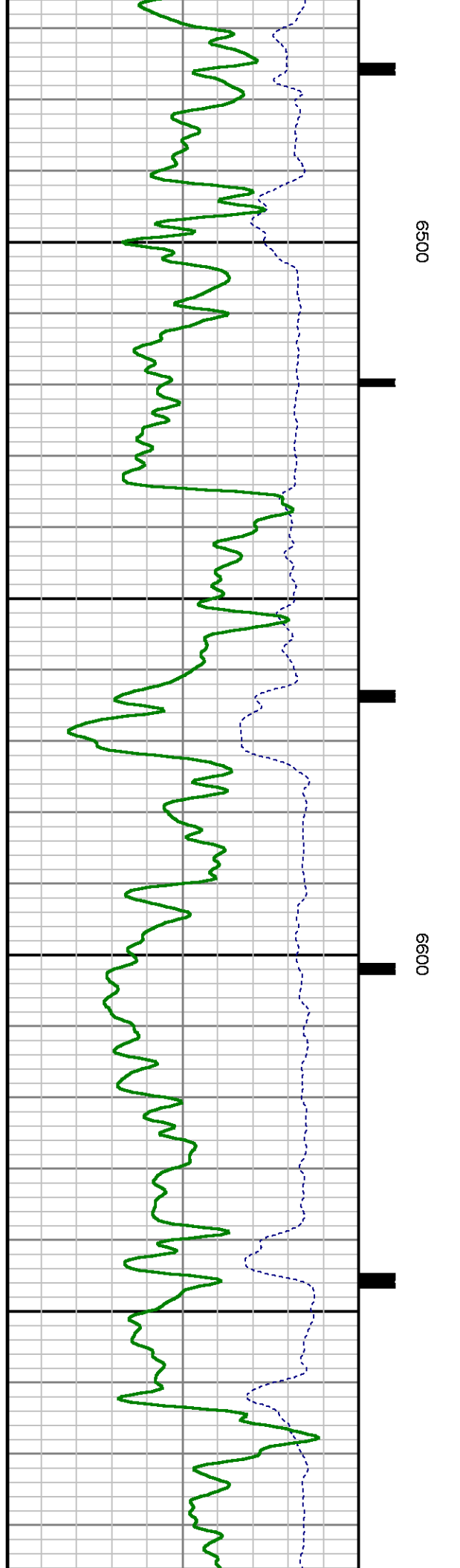


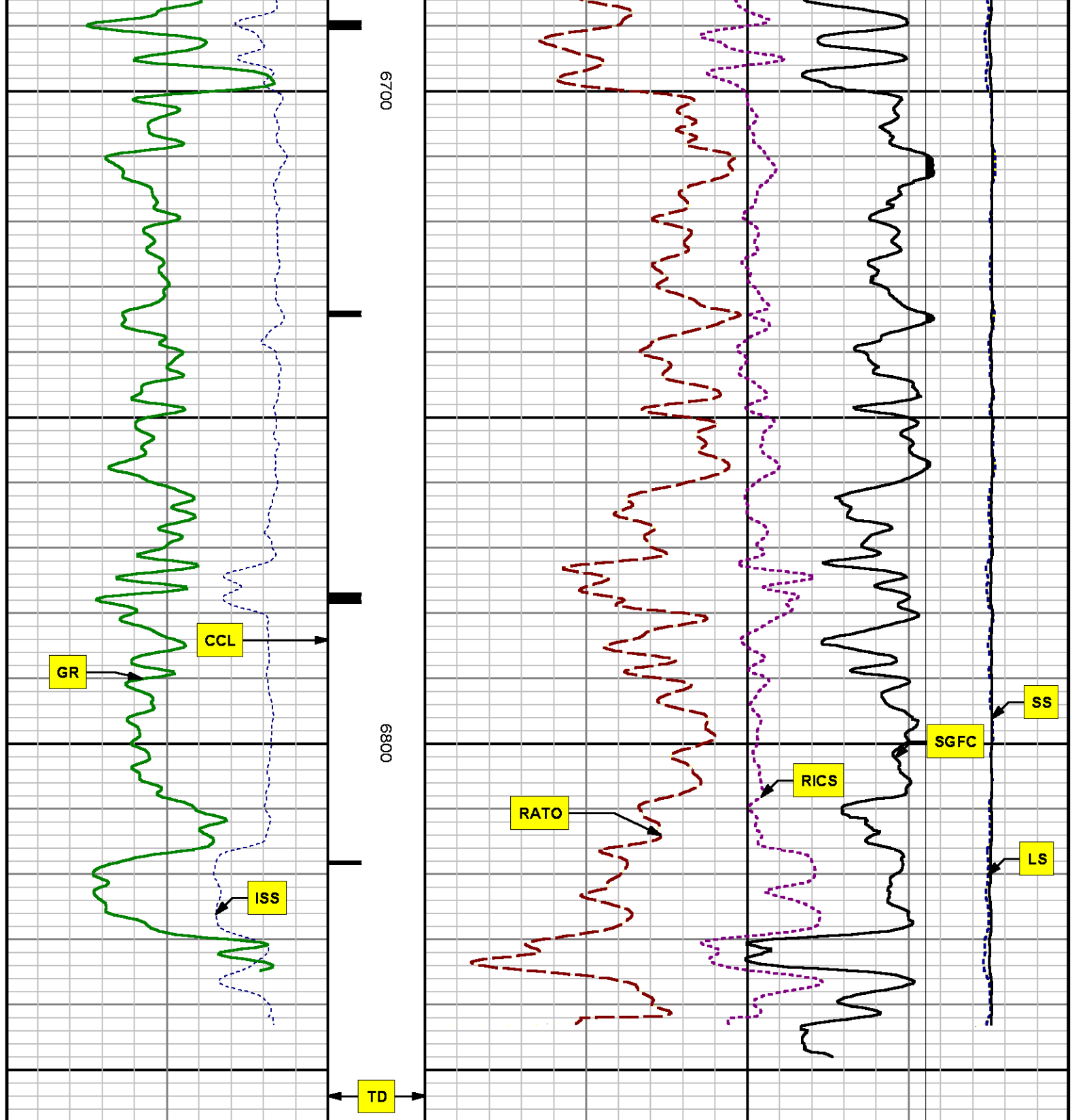


6300

6400







0	ISS	1e+006	CCL	MD feet 1:240
	cps		0	
0	GR	150		
	gAPI			

		0	LS	29000
			cps	
17	RATO		0	
37	RICS		7	
60	SGFC		0	
	cu			
			SS	
		0	29000	
			cps	

REPEAT SECTION PNC 3-D MODE

SPL PROCESSING

MEASUREMENT TYPE	PARAMETER	VALUE	UNITS	TOP	BOTTOM
PNC Porosity	Borehole	Cased		6017.670	6348.860
PNC Porosity	Borehole Size	8.750	inch	6017.670	6348.860
PNC Porosity	Casing Size	4.500	inch	6017.670	6348.860
PNC Porosity	Gas Filled	Non Gas Filled		6017.670	6348.860
PNC Porosity	Matrix	Sandstone		6017.670	6348.860
TPS Pressure	Temperature Corr. Source	Fixed (72.00)	degF	6017.670	6348.860

DEPTH OFFSETS

(for Acquired Curves)

SERIES	DEPTH OFFSET	ACQUIRED CURVES
8248ED	-26.519	FLTM
8248ED	-24.519	CCL CHV
2812LA	-21.969	GR
8281XA	-12.702	HVC3Q0 SEQ3 AMA3 AML3 BKX CXS CPT3Q0 CPT3Q2 CPT3Q3 CPT3Q4 ET3 IXS MCS3 MCS3Q0 QCAL3 RGN3 RICX SDA3 SDL3 SGA3 SGL3 STA3 XS ASPEC3 AMB3 AMF3 CHF3 IXSC IXSN RATO23 RICXC RIN13C RIN23 RIN23C SD3D SG3D SGB3 SGF3 WDTH3 CXSR IXSR XSR RICXR
8281XA	-12.291	HVC2Q0 SEQ2 AMA2 AMB2 AMF2 AML2 BKL CHF2 CLS CPT2Q0 CPT2Q2 CPT2Q3 CPT2Q4 ET2 ILS LS MCS2 MCS2Q0 QCAL2 RGN2 RICL RONE23 RTWO23 SDA2 SDL2 SGA2 SGB2 SGF2 SGK2 SGL2 STA2 ASPEC2 ILSC ILSN WDTH2 RICLC CLSR ILSR LSR RICLR
8281XA	-12.041	CPRS HVC1Q0 MV SEQ SEQ1 AMA1 AMB1 AME1 AMF1 AML1 BKS CHF1 CSS CORB CORF CPT1Q0 CPT1Q2 CPT1Q2A

CPT1Q2B	CPT1Q2C	CPT1Q3	CPT1Q4	CPT1Q5	ET1
G1	G2	GE1S	GE2S	ISS	MCS1
MCS1Q0	QA1	QCAL1	QM1	RATO	RATO13
RBOR	RGN1	RICS	RIN	RONE	RPOR
RTWO	RIN13	RONE13	RTWO13	SALB	SC1
SDA1	SDL1	SGA1	SGB1	SGBC	SGE1
SGF1	SGFC	SGK1	SGL1	SS	SS2
STA1	PD1S	PD2S	PD3S	MD1S	MD2S
MD3S	DG1S	DG2S	DG3S	PD1M	PD2M
PD3M	MD1M	MD2M	MD3M	DG1M	DG2M
DG3M	MVS	MA	MVM	FILV	IAM
TA	PVM	PVS	IAS	SSTAT	QPD1
QPD2	QPD3	QMD1	QMD2	QMD3	QDG1
QDG2	QDG3	QMA	QTA	QFILV	QMV
QPV	QIA	DERR	DCNT	QPK1	QSA1
PKS1	ASPEC1	H0C	FE2XC	ISSC	RINC
ISSN	RDEN	WDTH1	RICSC	CSSR	G1R
G2R	ISSR	SSR	SS2R	RATOR	RATO13R
RBORR	RICSR	RINR	RIN13R	RONER	RPORR
RTWOR					
PTFS	PTMS				
SPF1	SPFQ	TSCP	TSDP		
DTEM	TEMP	TNF			
TEN	TTEN				

8255XA	-0.792
8255XA	-0.775
8255XA	0.000
SYSTEM	0.000

Created by : RPM9, v5.3.1.0

Plotted by : PlotMgr, v5.4.504

Company : WPX ENERGY

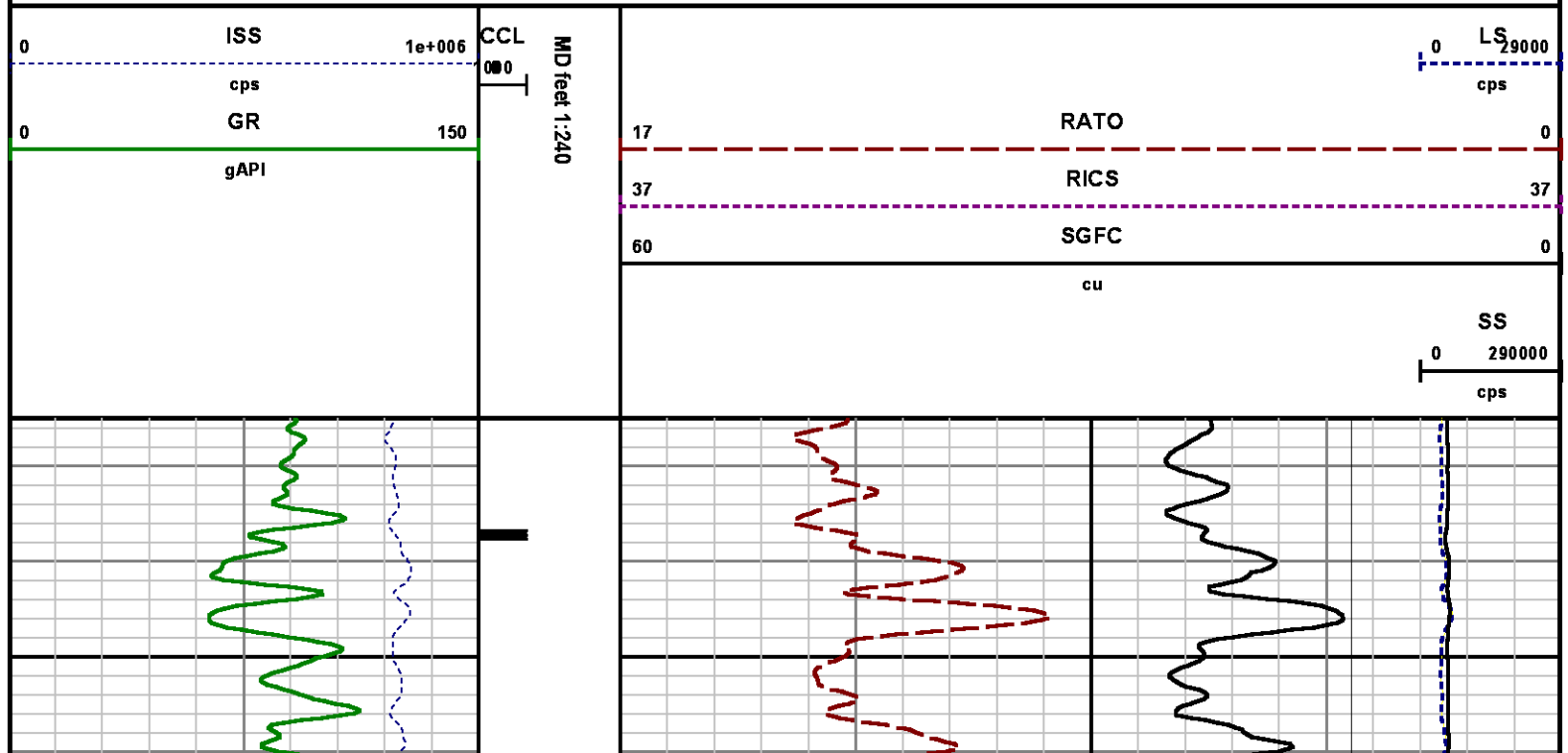
Well : C&C ENERGY GM 523-13

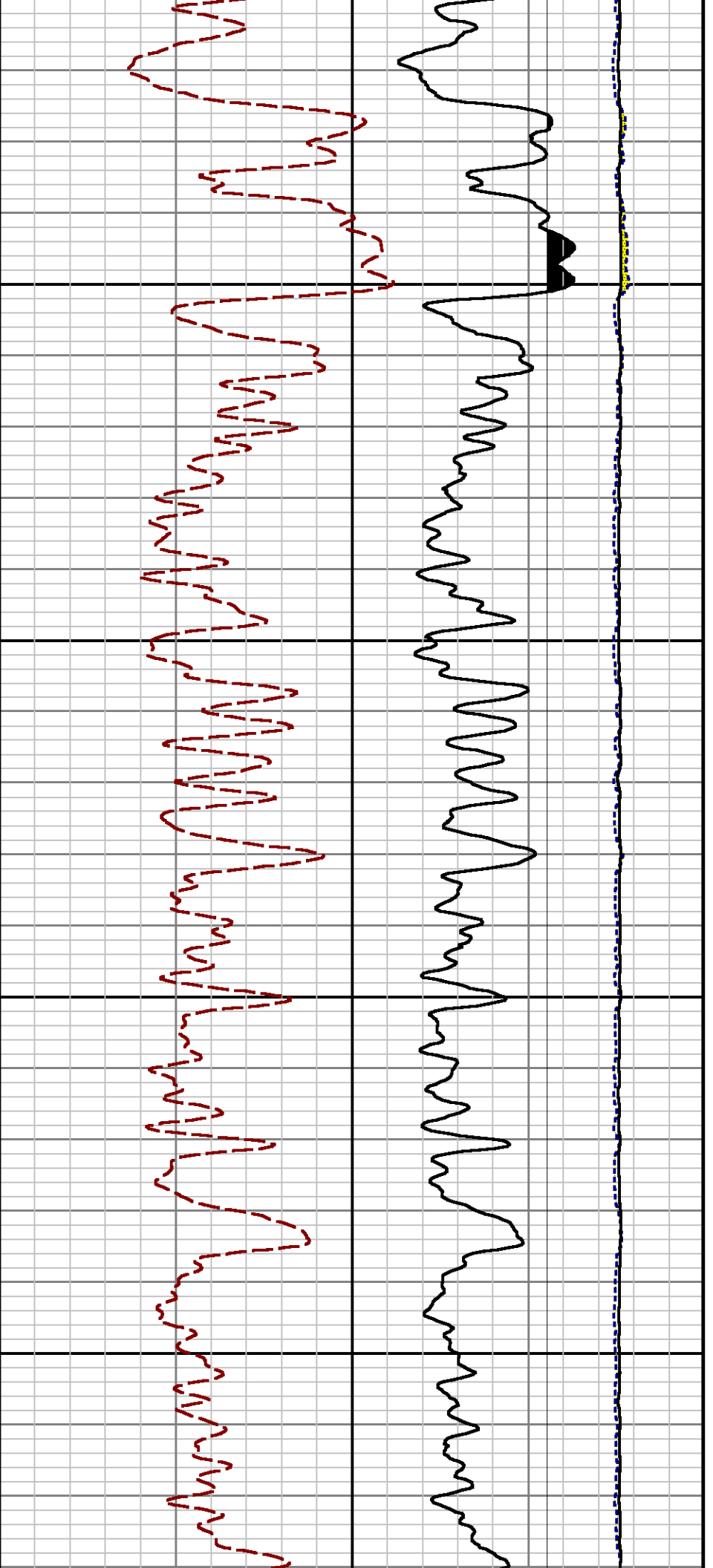
File Name : d:\welldata\wpx\gm 523-13\rpm523\repeat.xtf

Mode : PlotMgr 5.4.504

Interval : 6025.00 - 6325.00 feet UP

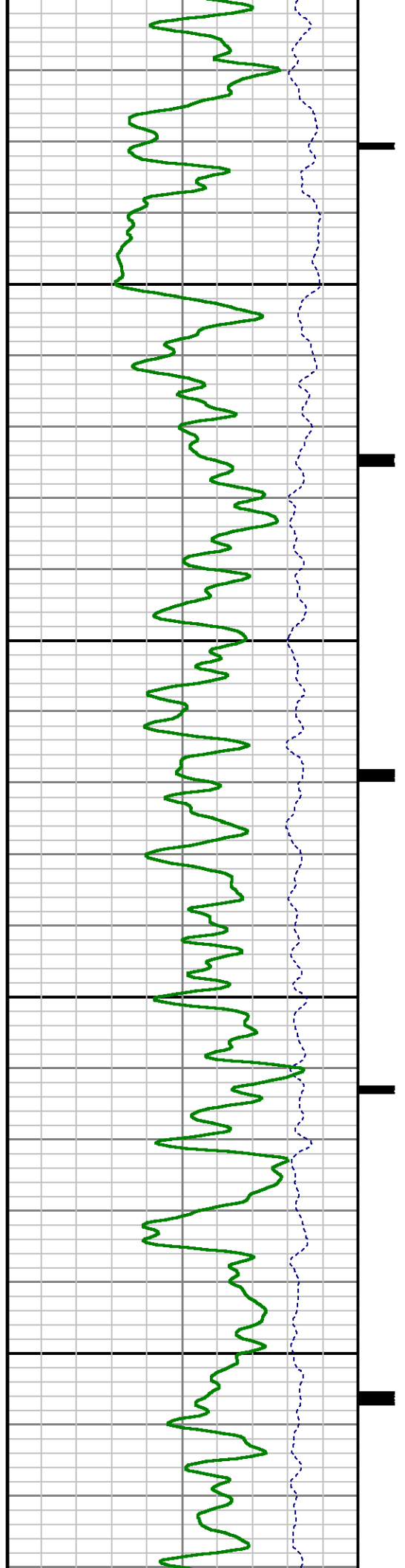
Created : 7/25/2014 12:11:48 PM

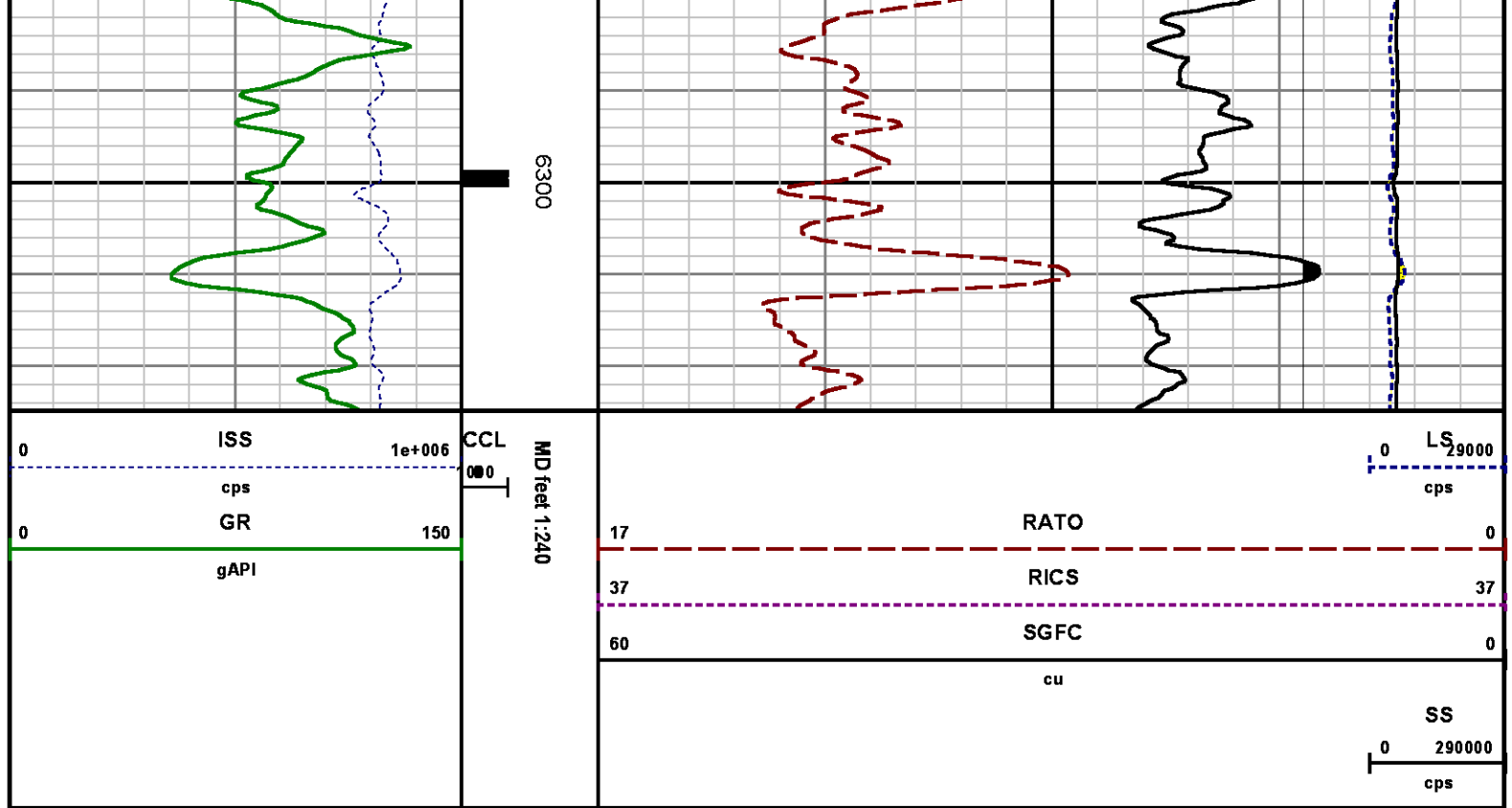




6100

6200





CALIBRATION SUMMARY

GAMMA RAY

Calibration File: C:\case\calver\GR\38530.cal

CALIBRATION SUMMARY

DATE/TIME PERFORMED: Mon Jun 30 08:38:51 2014 TOOL SERIES: 2812LA ASSET: 385 SEQ: 30

Calibrator #	Background [cps]	Calibrator On [cps]	Multiplicative	Background [api]	Calibrator On [api]	Differential [api]
S2K WA-612	42.56	269.00	0.927	39.47	249.47	210.00

Verification File: C:\case\calver\GR\38530.VP

PRIMARY VERIFICATION

DATE/TIME PERFORMED: Mon Jun 30 08:42:33 2014 TOOL SERIES: 2812LA ASSET: 385 SEQ: 30

Calibrator #	Background [cps]	Calibrator On [cps]	Multiplicative	Background [api]	Calibrator On [api]	Differential [api]
S2K WA-612	41.56	270.56	0.927	38.54	250.91	212.37

PNC

Calibration File: C:\case\calver\PNC\383_02.cal

PNC 3D CALIBRATION SUMMARY

DATE/TIME PERFORMED: Wed Jul 02 11:12:40 2014 TOOL SERIES: 8281XA ASSET: 383 SEQ: 02

Calibrator #

shop shop

Source #

8281AA 11710723

	ISS	Mtr VIts (V)	SS Gain	LS Gain	XLS Gain	EA Temp (degF)	Sync Delay (usec)	RCAL
Raw Data	815642	124.00	2273.00	2248.00	2207.00	113.01	7.00	0.9759
Interpolated	1300000	144.24	2253.89	2241.02	2201.12			

	ISS	BKS	BKL	BKX	SGA1	SDA1	SGA2	SDA2
Raw Data	815642	6112.95	967.26	132.35	25.67	0.14	24.23	0.28
					25.35 26.40	0.00 0.20	23.60 24.80	0.00 0.40

	ISS	ILS	IXS	SS	SS2	LS	CSS	CLS
Raw Data	815642	169475.86	25875.63	90426.93	32216.52	8369.17	54781.47	13381.45
Fit Quality %		1.33	1.32	0.94	0.94	1.26	0.85	1.23

	ISS	RBOR	RIN ISS/ILS	RIN13 ISS/IXS	RICS ISS/CSS	RATO SS/LS	RTWO SS2/LS	RONE CSS/CLS
Raw Data	815642	1.43	4.81	31.52	14.89	10.81	3.85	4.09
		1.42 1.45	3.55 5.52	22.20 32.70	10.99 16.34	10.06 11.10	3.57 3.95	3.76 4.22
Fit Quality %		0.06	0.19	0.13	0.07	0.26	0.22	0.23
Reduced	1383476	1.43	4.82	31.60	14.95	10.76	3.84	4.08
		1.42 1.45	4.33 5.52	27.60 32.70	13.70 16.34	10.06 11.10	3.57 3.95	3.76 4.22

TEMPERATURE

Calibration File: C:\case\calver\TEMP\120516AU.cal

CALIBRATION SUMMARY

DATE/TIME PERFORMED: 09 AUG 2010 TOOL SERIES: 8255XA ASSET: 120516 SEQ: AU

	T(0)	T(1)	T(2)	T(3)	T(4)	T(5)
Coefficients	-8.673169e+000	9.576065e-002	6.395448e-006	-9.461013e-010	0.000000e+000	0.000000e+000

TOOL DIAGRAM

OTA SHORT CABLE HEAD

PCM POWER SUPPLY

Series	8250EA
Mnemonic	PCM
Diameter	1.70"
Weight	18.00 lb
Length	3.86'
Temp Rating	350.00 °F

TELEMETRY / CCL

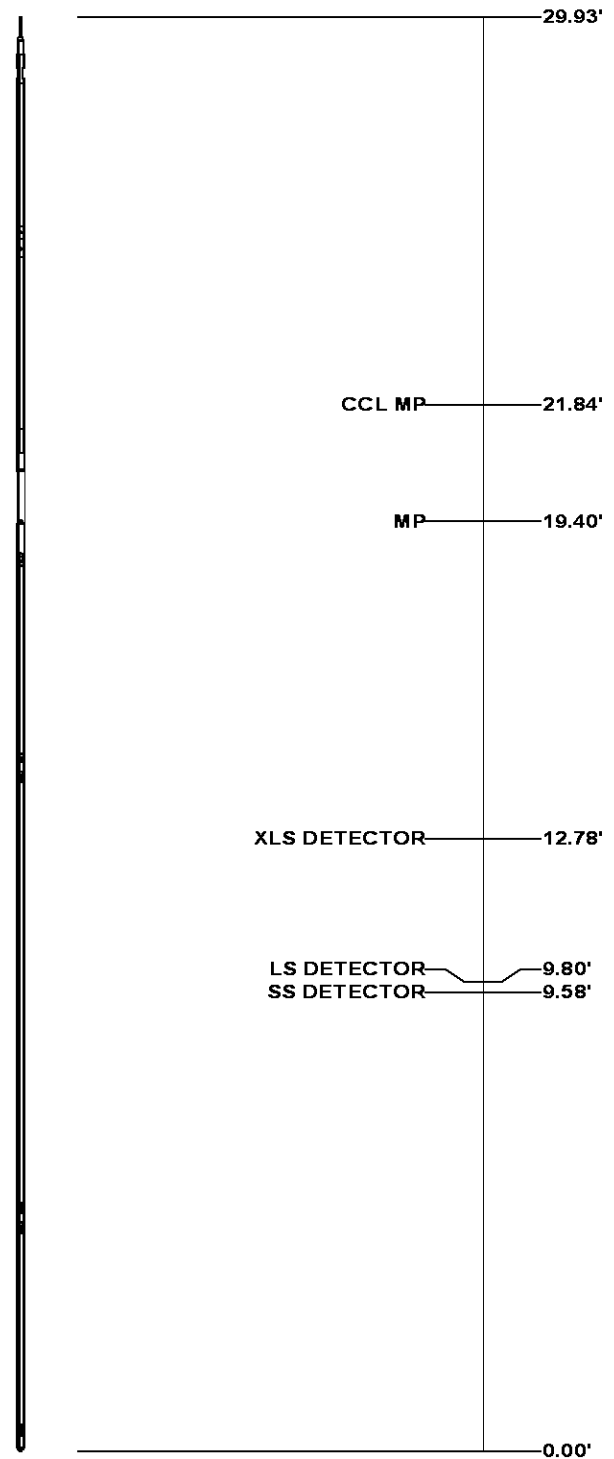
Series	8248EA
Mnemonic	PCM
Diameter	1.70"
Weight	20.00 lb
Length	4.46'
Measure Point	1.00' CCL MP
Temp Rating	350.00 °F
Press Rating	15000.00 PSI

SONDEX GAMMA RAY

Series	2812LA
Mnemonic	SNDX
Diameter	1.69"

RESERVOIR PERFORMANCE MONITOR

Series	8281XA
Mnemonic	RPM
Diameter	1.70"
Weight	75.00 lb
Length	18.58'
Measure Point	9.49' SS DETECTOR
Measure Point	9.72' LS DETECTOR
Measure Point	12.69' XLS DETECTOR
Temp Rating	350.00 °F
Press Rating	20000.00 PSI



Total Length: 29.93'
Total Weight: Not Available
Max Diameter: 0' 1.70"



Baker Atlas



Company WPX ENERGY
Well C&C ENERGY GM 523-13
Field GRAND VALLEY
County GARFIELD **State** COLORADO

File No:
CH088606
API No:
05045222610000

Location
 SHL: 290' FSL & 966' FWL (SEC 12)
 BHT: 2512' FNL & 209' FWL (SWNW SEC 13)
 SEC 13 TWP 7S RGE 96W

Elevations
 KB 5165 ft
 DF
 GL 5141 ft

13 7S 96W
 GM 24-12 PAD
 H&P 318