

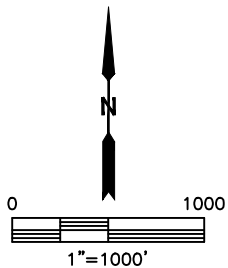
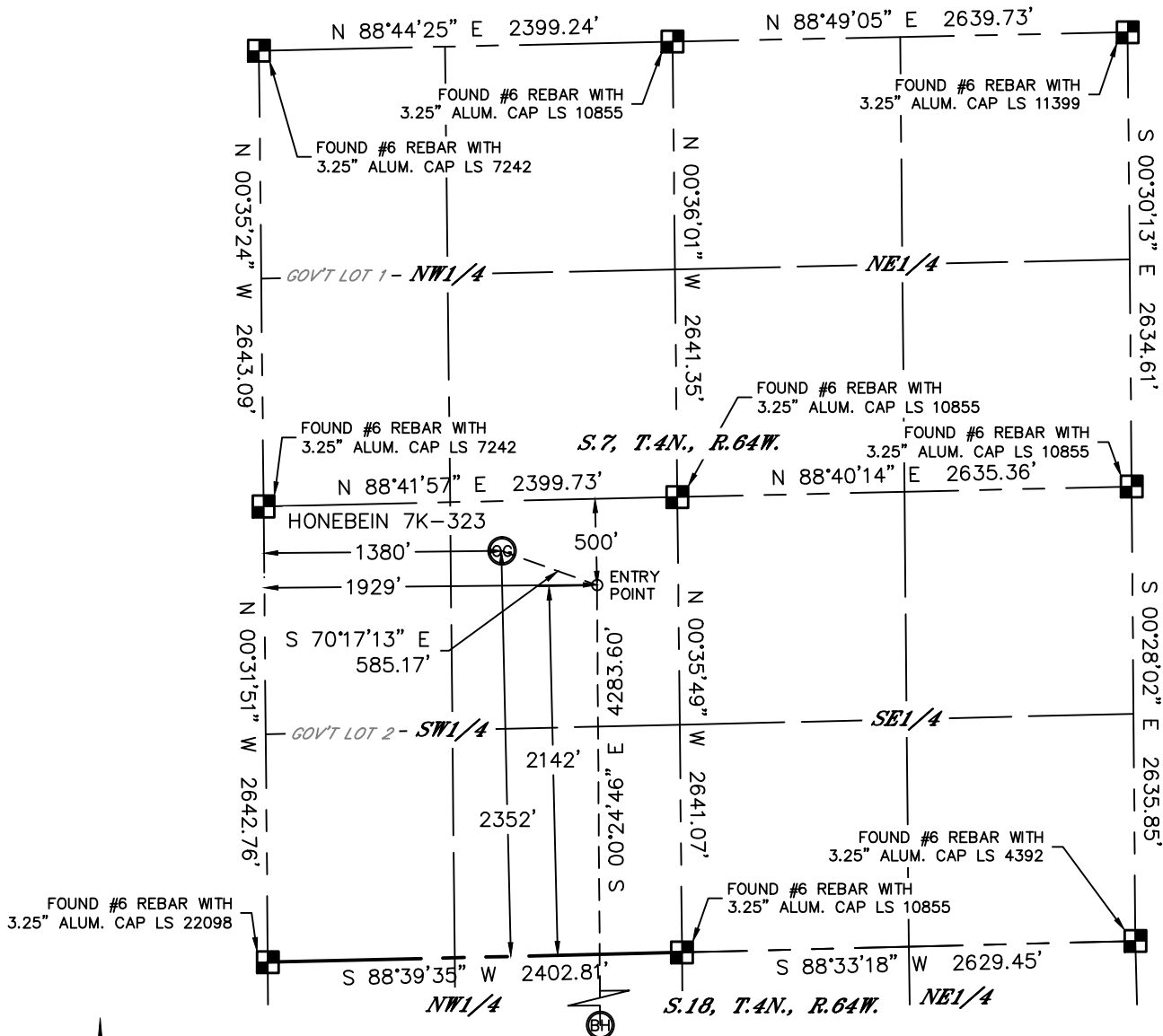


Lat40°, Inc. 1635 Foxtrail Drive, Suite 325 Loveland, CO 970-776-3321

WELL LOCATION CERTIFICATE

THIS MAP DOES NOT REPRESENT A BOUNDARY SURVEY

SECTION: 7
TOWNSHIP: 4N
RANGE: 64W



In accordance with a request from Mac Neumann with PDC ENERGY, Lat40°, Inc. has determined the surface location of the HONEBEIN 7K-323 to be 2352' from the SOUTH line and 1380' from the WEST line as measured at right angles from the section lines of Section 7, Township 4 North, Range 64 West and the bottom hole to be 2141' from the NORTH line and 1929' from the WEST line as measured at right angles from the section lines of Section 18, Township 4 North, Range 64 West of the Sixth Principal Meridian, County of Weld, State of Colorado.

I hereby state that this Well Location Certificate was prepared by me, or under my direct supervision, that the fieldwork was completed on 7/3/2014, for and on behalf of PDC ENERGY. That this is not a Land Survey Plat or an Improvement Survey Plat, and that it is not to be relied upon for establishment of fence, building, or other future improvement lines.

SURFACE LOCATION
LAT: 40.32593°N
LONG: 104.59709°W
PDOP: 1.3
ELEV: 4851'
1/4,1/4: NESW

BOTTOM HOLE
LAT: 40.31362°N
LONG: 104.59517°W

ENTRY POINT
LAT: 40.32538°N
LONG: 104.59513°W

NOTE:

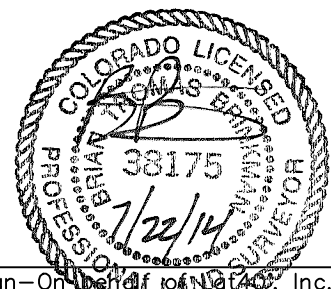
- 1) Bearings shown are Grid Bearings of the Colorado State Plane Coordinate System, North Zone, North American Datum 1983. The lineal dimensions as contained herein are based upon the "U.S. Survey Foot."
- 2) Ground elevations are based on an observed GPS elevation (NAVD 1988 DATUM).
- 3) IMPROVEMENTS: See LOCATION DRAWING for all visible improvements within 500' of disturbed area.
- 4) SURFACE USE: PASTURE
- 5) INSTRUMENT OPERATOR: BRIAN ROTTINGHAUS
- 6) NEAREST CULTURAL ITEMS:
BUILDING: ±729' SE
BUILDING UNIT: ±729' SE
HIGH OCCUPANCY BUILDING UNIT: 5280'+
DESIGNATED OUTSIDE ACTIVITY AREA: 5280'+
PUBLIC ROAD: (CR 49) 1360' W
ABOVEGROUND UTILITY: ±906' N
RAILROAD: 5280'+
PROPERTY LINE: 290' N

LEGEND

- = ALIQUOT MONUMENT AS DESCRIBED
○ = CALCULATED POSITION

SHEET 1 OF 2

Brian T. Brinkman—On behalf of Lat40°, Inc.
Colorado Licensed Professional Land Surveyor No. 38175
DATE: 7/22/2014
PROJECT#: 2014120



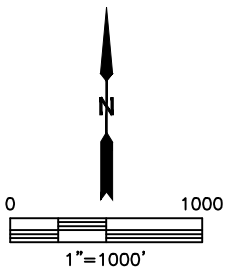
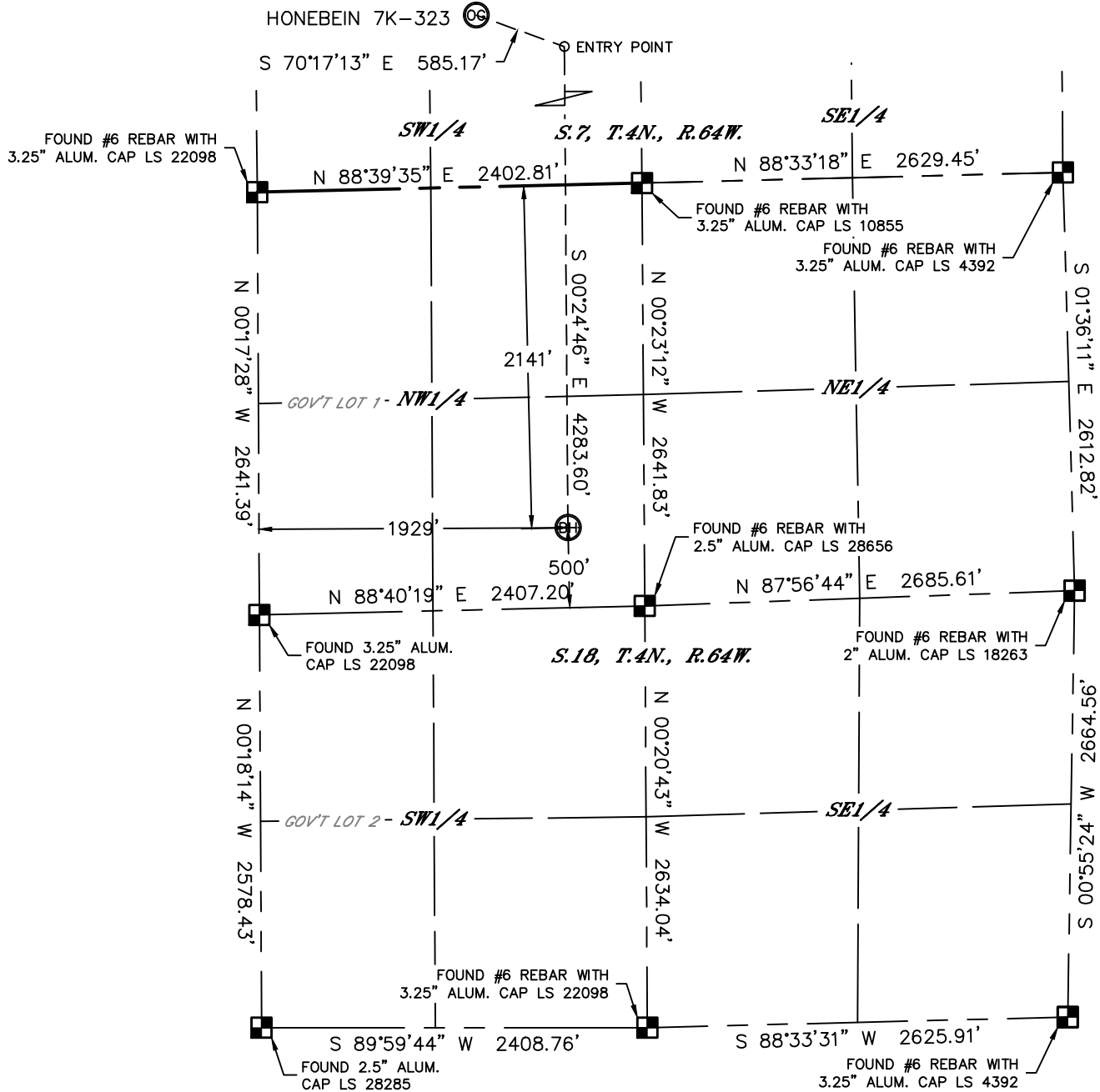


Lat40°, Inc. 1635 Foxtrail Drive, Suite 325 Loveland, CO 970-776-3321

WELL LOCATION CERTIFICATE

THIS MAP DOES NOT REPRESENT A BOUNDARY SURVEY

SECTION: 7
TOWNSHIP: 4N
RANGE: 64W

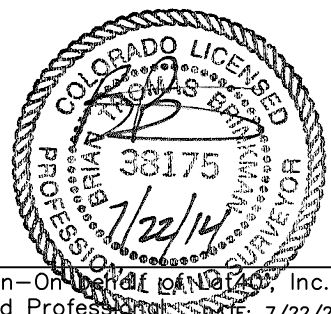


LEGEND

- = ALIQUOT MONUMENT AS DESCRIBED
- = CALCULATED POSITION

SHEET 2 OF 2

Brian T. Brinkman—On behalf of Lat40°, Inc.
Colorado Licensed Professional Land Surveyor No. 38175
DATE: 7/22/2014
PROJECT#: 2014120



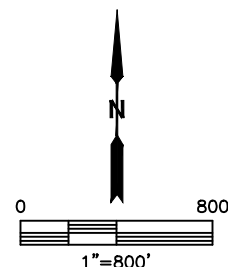
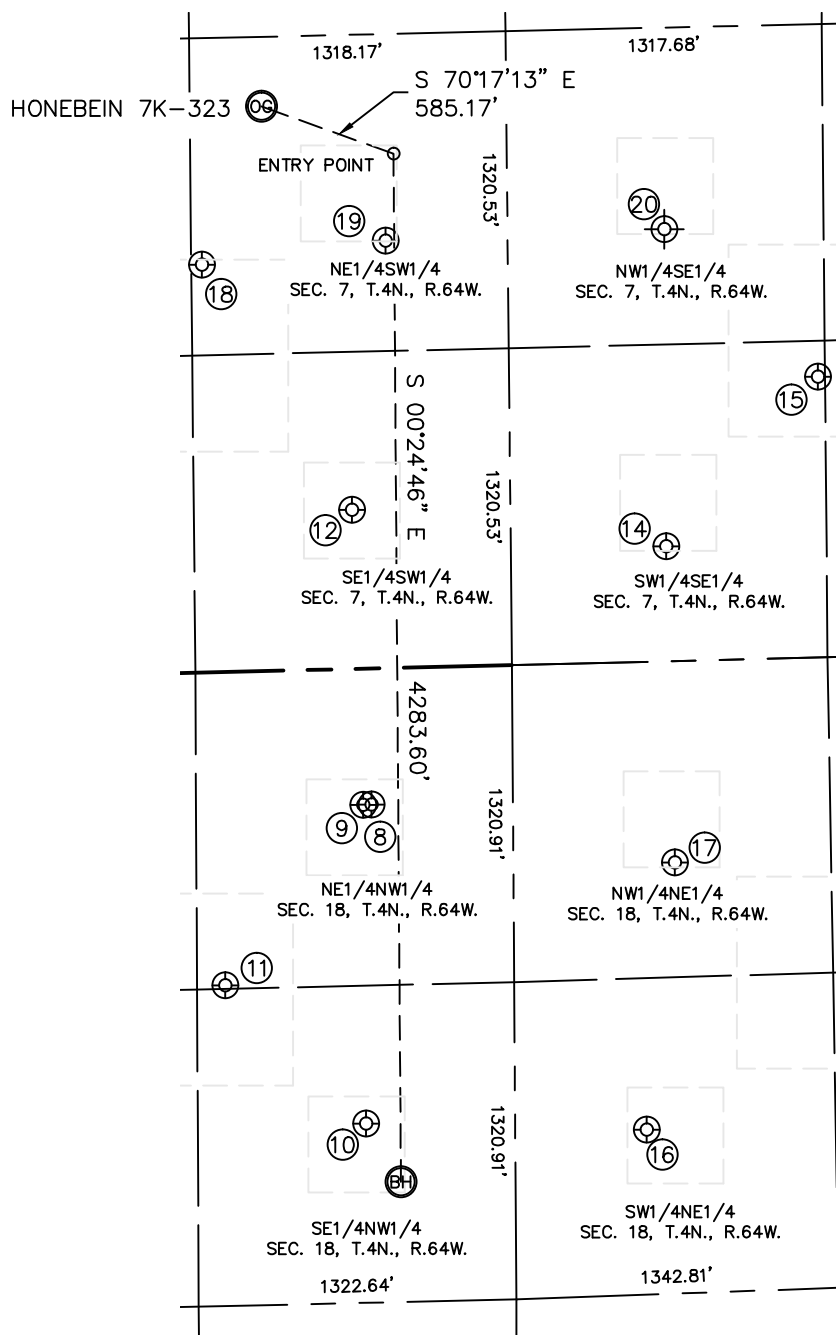


Lat40°, Inc. 1635 Foxtrail Drive, Suite 325 Loveland, CO 970-776-3321

SITE SKETCH

HONEBEIN 7K-323

SECTION: 7
TOWNSHIP: 4N
RANGE: 64W



WELL NO.	WELL NAME	SHL FOOTAGE				SHL LAT°	SHL LONG°	PDOP	ELEV (FT.)	1/4/1/4
8	FRY 21-6I	567	FNL	1814	FWL	40.31794	-104.59555	1.7	4839	NENW
9	FRY 21-18	567	FNL	1780	FWL	40.31794	-104.59568	1.7	4838	NENW
10	FRY 22-18	1895	FNL	1784	FWL	40.31429	-104.59569	1.6	4830	SENW
11	FRY 5	1306	FNL	1202	FWL	40.31589	-104.59776	1.6	4818	NENW
12	LATHAM 7-4	662	FSL	1742	FWL	40.32131	-104.59580	1.6	4851	SESW
14	OCOMA-UPRR C7-15	478	FSL	1983	FEL	40.32085	-104.59112	1.8	4824	SWSE
15	OCOMA C 7-23	1169	FSL	1346	FEL	40.32278	-104.58883	1.8	4833	SWSE
16	FRICK 32-18	1949	FNL	2122	FEL	40.31419	-104.59149	1.9	4802	SWNE
17	FRICK C 18-2	839	FNL	1975	FEL	40.31724	-104.59104	2.3	4801	NWNE
18	LATHAM 7-1	1698	FSL	1126	FWL	40.32413	-104.59801	2.4	4848	NESW
19	LATHAM 7-2	1779	FSL	1892	FWL	40.32438	-104.59526	2.2	4860	NESW
20	OCOMA UPRR LEASE C7-10	1800	FSL	1980	FEL	40.32447	-104.59120	NA	4855	NWSE

NOTE: THE ABANDONED WELL DATA SHOWN IN RED ABOVE WAS OBTAINED FROM COGCC SCOUT CARDS.

DATE: 7/22/2014
PROJECT#: 2014120