

1801 Broadway  
Suite 500  
Denver, Colorado 80202



Callie Fiddes  
Regulatory Technician  
Tel: 303.398.0550  
E-mail: cfiddes@gwogco.com

September 4, 2014

Colorado Oil and Gas Conservation Commission  
1120 Lincoln Street, Suite 801  
Denver, Colorado 80203

RE: **Proposed Wellbore Spacing Unit**  
Kodak South FD 25-362HN

Niobrara New Drill  
Township 6 North, Range 67 West, 6<sup>th</sup> P.M.  
Section 26  
Weld County, Colorado

Dear Director:

Great Western Operating Company, LLC is planning to drill the above captioned well in accordance with the provisions of COGCC Rule 318A.e.

Great Western proposed wellbore spacing unit consists of:

- **SESW, S2SE Sec 26 S2S2 Sec 25**
- **280 acres**

The 30 day notification time has passed and we have not received any objections to such well locations or proposed spacing unit, therefore Great Western hereby requests the Director to approve the above mentioned well. Great Western Operating Company, LLC respectfully requests that the COGCC review the enclosed map illustrating the proposed wellbore spacing unit.

Respectfully,

*Callie Fiddes*

Callie Fiddes  
Regulatory Technician  
Great Western Operating Company, LLC

T6N, R67W, 6th P.M.

GREAT WESTERN OIL & GAS COMPANY

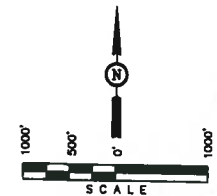
Well location, KODAK SOUTH FD 25-362HN, located as shown in the SE 1/4 SW 1/4 of Section 26, T6N, R67W, 6th P.M., Weld County, Colorado.

BASIS OF ELEVATION

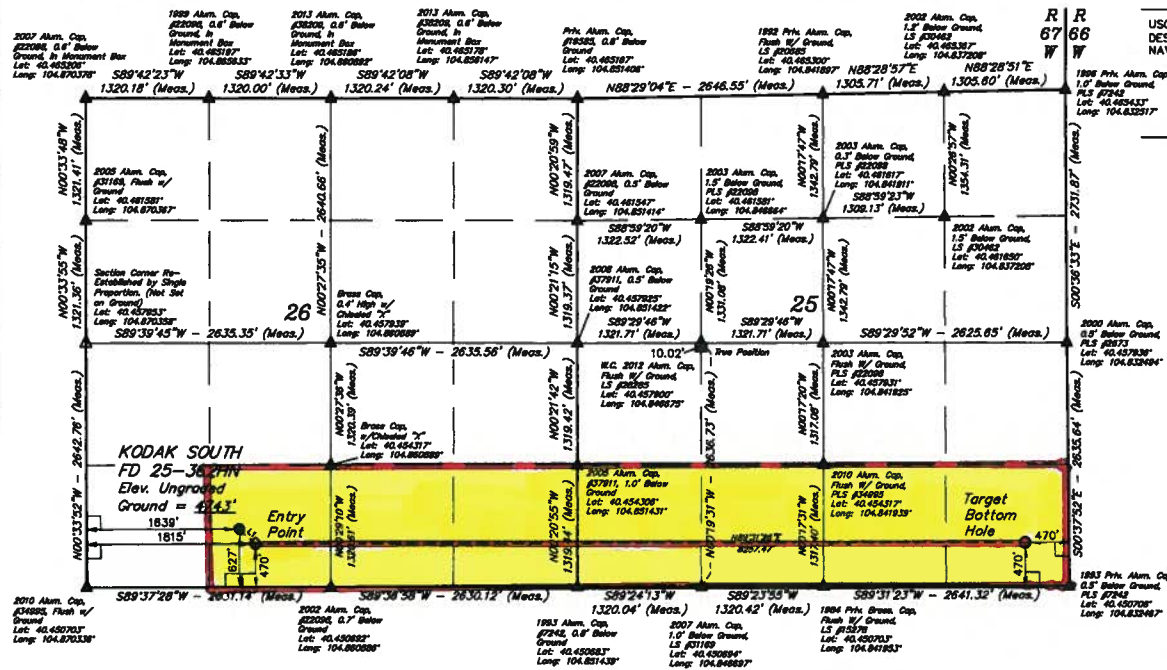
USGS COOPERATIVE BASE NETWORK CONTROL STATION, DESIGNATION 'VERMILYEA'. NOS DATA SHEET LISTS THE NAVD 88 ELEVATION AS BEING 5026 FEET

BASIS OF BEARINGS

BASIS OF BEARINGS IS A G.P.S. OBSERVATION.



LINE TABLE		
LINE	DIRECTION	LENGTH
L1	S48°41'13"E	238.74'



LEGEND:

- └ = 90° SYMBOL
- = PROPOSED WELL HEAD.
- = TARGET BOTTOM HOLE.
- ◇ = ENTRY POINT.
- ▲ = SECTION CORNERS LOCATED.
- △ = SECTION CORNERS RE-ESTABLISHED. (Not Set on Ground.)

CERTIFICATE OF RECORD  
THIS IS TO CERTIFY THAT THE ABOVE IS A TRUE AND CORRECT COPY OF THE FIELD NOTES OF ACTUAL SURVEYING BY ME OR UNDER MY CLOSE PERSONAL SUPERVISION AND THAT THE SAME ARE TRUE AND CORRECT TO THE BEST OF MY KNOWLEDGE AND BELIEF.  
REGISTERED LAND SURVEYOR  
RECORDING NO. 25356  
STATE OF COLORADO  
JULY 14, 2013

UNTAH ENGINEERING & LAND SURVEYING  
85 SOUTH 200 EAST - VERNAL, UTAH 84078  
(435) 789-1017

PDOP = 1.7	SCALE 1" = 1000'	DATE SURVEYED: 10-18-13	DATE DRAWN: 11-02-13
	PARTY D.N. G.W. J.S.	REFERENCES G.L.O. PLAT	
	WEATHER COOL	FILE GREAT WESTERN OIL & GAS COMPANY	

NAME: T6N, R67W, 6th P.M. LATITUDE = 40°27'07.18" (40.451694) LONGITUDE = 104°45'07.18" (104.751438)	NAME: T6N, R67W, 6th P.M. LATITUDE = 40°27'07.18" (40.451694) LONGITUDE = 104°45'07.18" (104.751438)	NAME: T6N, R67W, 6th P.M. LATITUDE = 40°27'07.18" (40.451694) LONGITUDE = 104°45'07.18" (104.751438)
NAME: T6N, R67W, 6th P.M. LATITUDE = 40°27'07.18" (40.451694) LONGITUDE = 104°45'07.18" (104.751438)	NAME: T6N, R67W, 6th P.M. LATITUDE = 40°27'07.18" (40.451694) LONGITUDE = 104°45'07.18" (104.751438)	NAME: T6N, R67W, 6th P.M. LATITUDE = 40°27'07.18" (40.451694) LONGITUDE = 104°45'07.18" (104.751438)