

1801 Broadway  
Suite 500  
Denver, Colorado 80202



Callie Fiddes  
Regulatory Technician  
Tel: 303.398.0550  
E-mail: cfiddes@gwogco.com

September 4, 2014

Colorado Oil and Gas Conservation Commission  
1120 Lincoln Street, Suite 801  
Denver, Colorado 80203

RE: **Proposed Wellbore Spacing Unit**  
Kodak South FD 25-319HN

Niobrara New Drill  
Township 6 North, Range 67 West, 6<sup>th</sup> P.M.  
Section 26  
Weld County, Colorado

Dear Director:

Great Western Operating Company, LLC is planning to drill the above captioned well in accordance with the provisions of COGCC Rule 318A.e.

Great Western proposed wellbore spacing unit consists of:

- **E2SW, SE Sec 26 S2 Sec 25**
- **560 acres**

The 30 day notification time has passed and we have not received any objections to such well locations or proposed spacing unit, therefore Great Western hereby requests the Director to approve the above mentioned well. Great Western Operating Company, LLC respectfully requests that the COGCC review the enclosed map illustrating the proposed wellbore spacing unit.

Respectfully,

*Callie Fiddes*

Callie Fiddes  
Regulatory Technician  
Great Western Operating Company, LLC

T6N, R67W, 6th P.M.

GREAT WESTERN OIL & GAS COMPANY

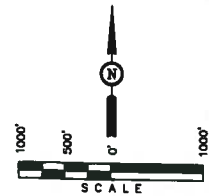
Well location, KODAK SOUTH FD 25-319HN, located as shown in the SE 1/4 SW 1/4 of Section 26, T6N, R67W, 6th P.M., Weld County, Colorado.

BASIS OF ELEVATION

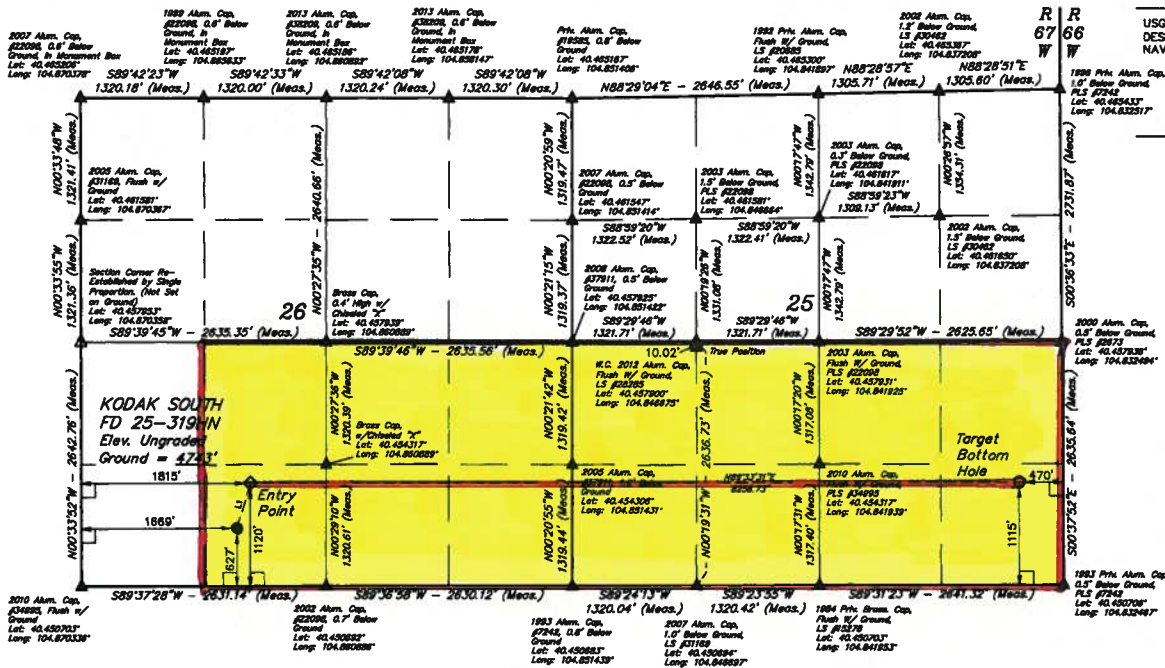
USGS COOPERATIVE BASE NETWORK CONTROL STATION, DESIGNATION 'VERMILYEA'. NGS DATA SHEET LISTS THE NAVD 88 ELEVATION AS BEING 5026 FEET

BASIS OF BEARINGS

BASIS OF BEARINGS IS A G.P.S. OBSERVATION.



LINE TABLE		
LINE	DIRECTION	LENGTH
L1	N15°06'51"E	613.61'



LEGEND:

- └ = 90° SYMBOL
- = PROPOSED WELL HEAD.
- = TARGET BOTTOM HOLE.
- ◇ = ENTRY POINT.
- ▲ = SECTION CORNERS LOCATED.
- △ = SECTION CORNERS RE-ESTABLISHED. (Not Set on Ground.)

THIS IS TO CERTIFY THAT THE ABOVE IS A TRUE AND CORRECT COPY OF THE ORIGINAL SURVEY MAP AND THAT THE SAME HAS BEEN REVIEWED AND APPROVED BY THE SURVEYOR AND THAT THE SAME IS A TRUE AND CORRECT COPY OF THE ORIGINAL SURVEY MAP AND THAT THE SAME HAS BEEN REVIEWED AND APPROVED BY THE SURVEYOR.



UNTAH ENGINEERING & LAND SURVEYING  
88 SOUTH 200 EAST - VERNAL, UTAH 84078  
(435) 789-1017

POOP = 2.0	SCALE 1" = 1000'	DATE SURVEYED: 10-18-13	DATE DRAWN: 11-02-13
PARTY: D.N. G.W. J.S.	REFERENCES: G.L.O. PLAT	FILE: GREAT WESTERN OIL & GAS COMPANY	
WEATHER: COOL			

POINT	COORDINATES	POINT	COORDINATES	POINT	COORDINATES
1	NAD 83 UTM ZONE 18Q UTM EASTING = 402713.37 UTM NORTHING = 402713.37 (40.483784)	2	NAD 83 UTM ZONE 18Q UTM EASTING = 402713.37 UTM NORTHING = 402713.37 (40.483784)	3	NAD 83 UTM ZONE 18Q UTM EASTING = 402713.37 UTM NORTHING = 402713.37 (40.483784)
4	NAD 83 UTM ZONE 18Q UTM EASTING = 402713.37 UTM NORTHING = 402713.37 (40.483784)	5	NAD 83 UTM ZONE 18Q UTM EASTING = 402713.37 UTM NORTHING = 402713.37 (40.483784)	6	NAD 83 UTM ZONE 18Q UTM EASTING = 402713.37 UTM NORTHING = 402713.37 (40.483784)
7	NAD 83 UTM ZONE 18Q UTM EASTING = 402713.37 UTM NORTHING = 402713.37 (40.483784)	8	NAD 83 UTM ZONE 18Q UTM EASTING = 402713.37 UTM NORTHING = 402713.37 (40.483784)	9	NAD 83 UTM ZONE 18Q UTM EASTING = 402713.37 UTM NORTHING = 402713.37 (40.483784)