

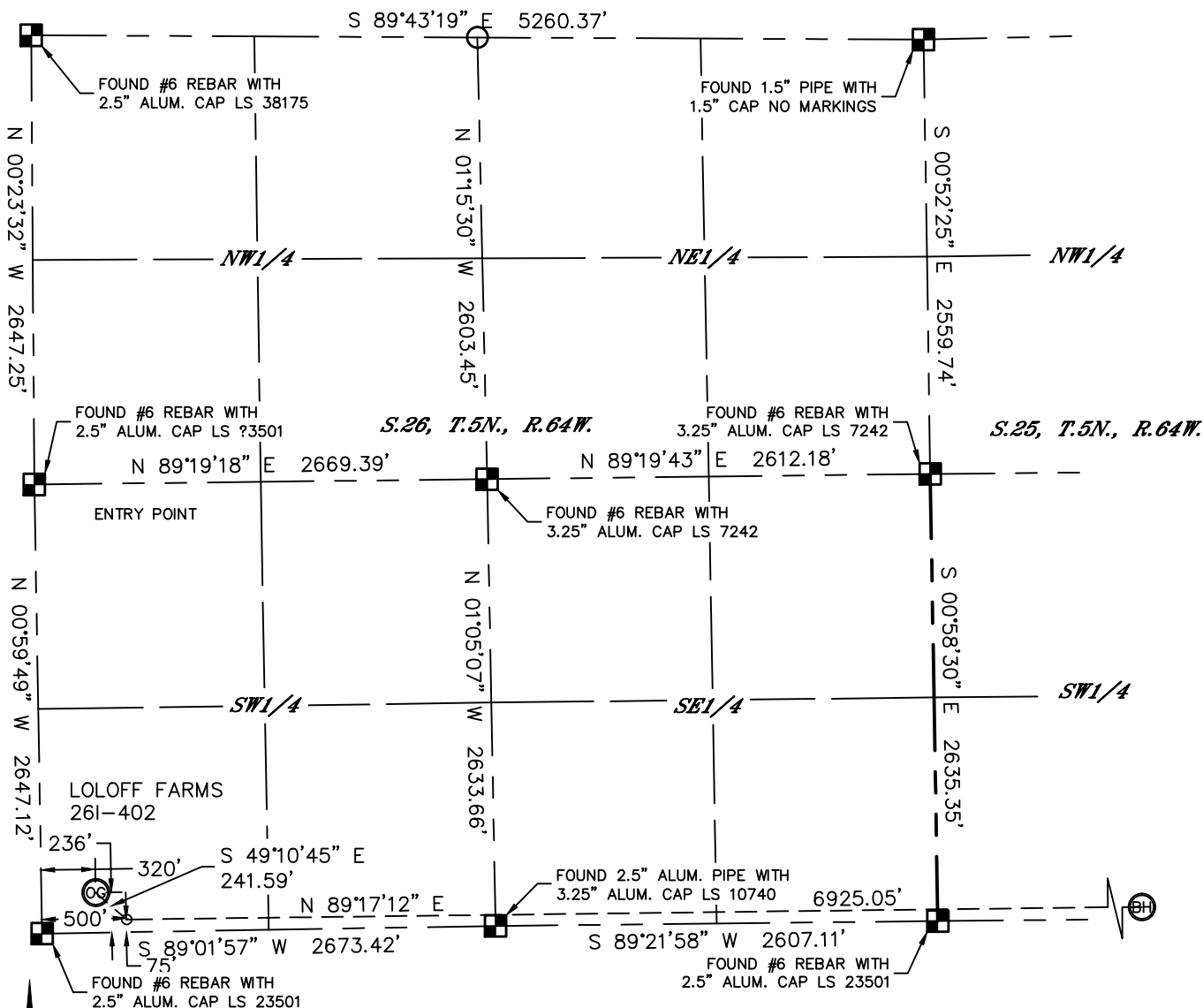


Lat40°, Inc. 1635 Foxtrail Drive, Suite 325 Loveland, CO 970-776-3321

WELL LOCATION CERTIFICATE

THIS MAP DOES NOT REPRESENT A BOUNDARY SURVEY

SECTION: 26
TOWNSHIP: 5N
RANGE: 64W



In accordance with a request from Al Bragg with PDC ENERGY

Lat40°, Inc. has determined the surface location of the LOLOFF FARMS 261-402 to be 236' from the SOUTH line and 320' from the WEST line as measured at right angles from the section lines of Section 26, Township 5 North, Range 64 West and the bottom hole to be 75' from the SOUTH line and 2144' from the WEST line as measured at right angles from the section lines of Section 25, Township 5 North, Range 64 West of the Sixth Principal Meridian, County of Weld, State of Colorado.

I hereby state that this Well Location Certificate was prepared by me, or under my direct supervision, that the fieldwork was completed on 6/24/2014, for and on behalf of PDC ENERGY. That this is not a Land Survey Plat or an Improvement Survey Plat, and that it is not to be relied upon for establishment of fence, building, or other future improvement lines.

SURFACE LOCATION

LAT: 40.36377N
LONG: 104.52521W
PDOP: 2.1
ELEV: 4677'
1/4,1/4: SW1/4SW1/4

BOTTOM HOLE

LAT: 40.36335N
LONG: 104.49971W

ENTRY POINT

LAT: 40.36333N
LONG: 104.52456W

LEGEND

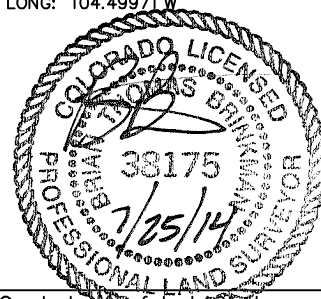
- = ALIQUOT MONUMENT AS DESCRIBED
○ = CALCULATED POSITION

SHEET 1 OF 2

Brian T. Brinkman—On behalf of Lat40°, Inc.

Colorado Licensed Professional
Land Surveyor No. 38175

DATE: 7/25/2014
PROJECT#: 2014021



NOTE:

- 1) Bearings shown are Grid Bearings of the Colorado State Plane Coordinate System, North Zone, North American Datum 1983. The lineal dimensions as contained herein are based upon the "U.S. Survey Foot."
- 2) Ground elevations are based on an observed GPS elevation (NAVD 1988 DATUM).
- 3) IMPROVEMENTS: See LOCATION DRAWING for all visible improvements within 500' of disturbed area.
- 4) SURFACE USE: PASTURE
- 5) INSTRUMENT OPERATOR: WYATT HALL
- 6) NEAREST CULTURAL ITEMS:
BUILDING: ±323' SE
BUILDING UNIT: ±482' N
HIGH OCCUPANCY BUILDING UNIT: 5280'+
DESIGNATED OUTSIDE ACTIVITY AREA: 5280'+
PUBLIC ROAD: (CR 57) ±306' W
ABOVEGROUND UTILITY: ±201' S
RAILROAD: 5280'+
PROPERTY LINE: ±236' S

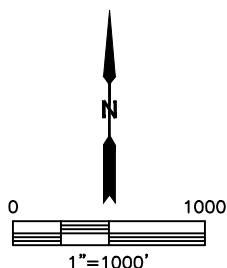
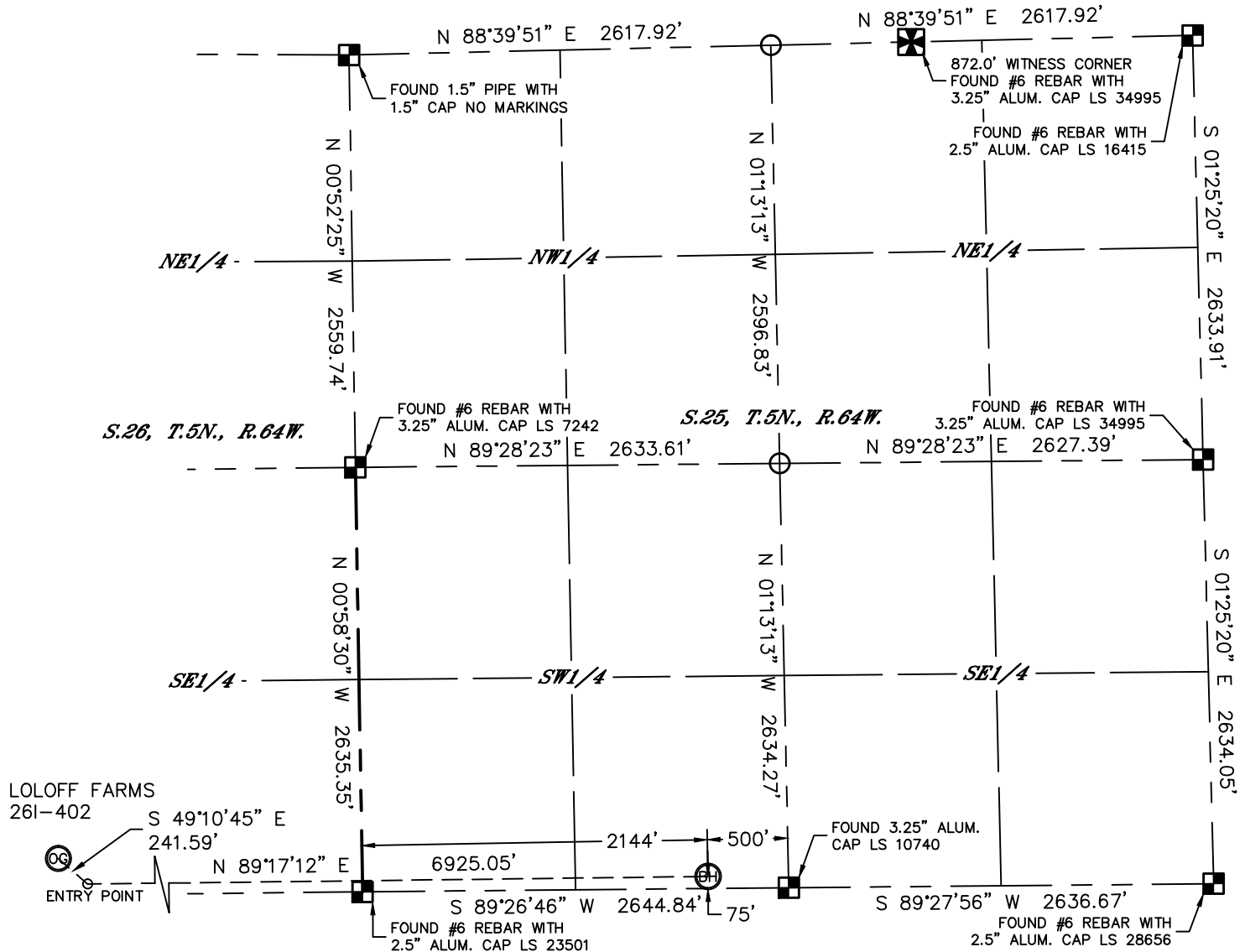


Lat40°, Inc. 1635 Foxtrail Drive, Suite 325 Loveland, CO 970-776-3321

WELL LOCATION CERTIFICATE

THIS MAP DOES NOT REPRESENT A BOUNDARY SURVEY

SECTION: 26
TOWNSHIP: 5N
RANGE: 64W

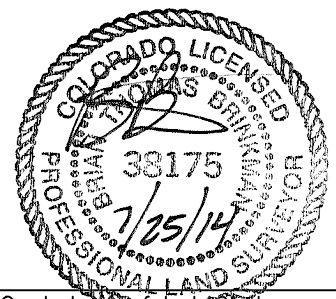


LEGEND

- = ALIQUOT MONUMENT AS DESCRIBED
- = CALCULATED POSITION

SHEET 2 OF 2

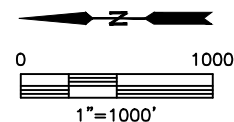
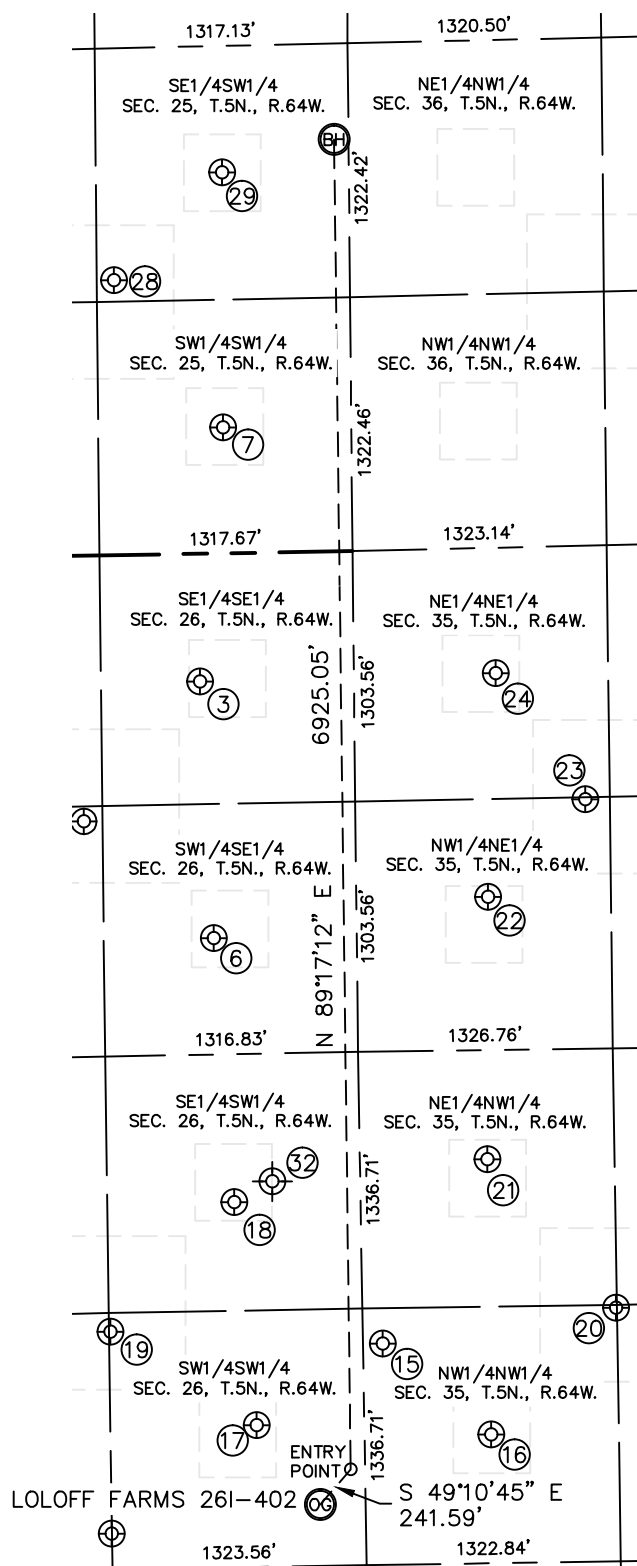
Brian T. Brinkman—On behalf of Lat40°, Inc.
Colorado Licensed Professional
Land Surveyor No. 38175
DATE: 7/25/2014
PROJECT#: 2014021



SITE SKETCH

LOLOFF FARMS 261-402

SECTION: 26
TOWNSHIP: 5N
RANGE: 64W





Lat40°, Inc. 1635 Foxtrail Drive, Suite 325 Loveland, CO 970-776-3321

SITE SKETCH

LOLOFF FARMS 26I-402

SECTION: 26
TOWNSHIP: 5N
RANGE: 64W

WELL NO.	WELL NAME	SHL FOOTAGE				SHL LAT°	SHL LONG°	PDOP	ELEV (FT.)	1/4/1/4
3	SCHLAGEL 26-4	802	FSL	665	FEL	40.36536	-104.50981	2.1	4590	SESE
6	SCHLAGEL 26-1	745	FSL	2003	FEL	40.36520	-104.51461	2.1	4611	SWSE
7	LOUSTALET 25-1	668	FSL	656	FWL	40.36499	-104.50506	2.1	4591	SWSW
15	LOLOFF B 35-29	103	FNL	1153	FWL	40.36285	-104.52221	1.8	4662	NWNW
16	STROH 35-4	660	FNL	671	FWL	40.36131	-104.52393	1.6	4648	NWNW
17	LOLOFF 2	560	FSL	738	FWL	40.36466	-104.52371	1.5	4668	NWNW
18	LOLOFF B 26-14X	658	FSL	1901	FWL	40.36495	-104.51954	1.7	4659	SESW
19	LOLOFF B 26-25	1314	FSL	1238	FWL	40.36674	-104.52194	1.8	4642	SWSW
20	LOLOFF B 35-19	1320	FNL	1321	FWL	40.35951	-104.52159	2.2	4630	NWNW
21	LOLOFF 3	663	FNL	2104	FWL	40.36133	-104.51879	1.6	4635	NENW
22	LOLOFF 35-6	685	FNL	1818	FEL	40.36128	-104.51389	1.3	4611	NWNE
23	LOLOFF B 35-17	1197	FNL	1320	FEL	40.35987	-104.51209	1.5	4599	NWNE
24	LOLOFF 35-5	738	FNL	654	FEL	40.36113	-104.50972	1.5	4593	NENE
28	LOUSTALET 5	1228	FSL	1431	FWL	40.36652	-104.50229	1.7	4584	SESW
29	LOUSTALET 24-25	660	FSL	1983	FWL	40.36496	-104.50030	1.8	4588	SESW
32	LOLOFF 26-14	457	FSL	2006	FWL	40.36441	-104.51909	N/A	4645	SESW

SHEET 2 OF 2

NOTE: THE ABANDONED WELL DATA SHOWN IN RED ABOVE WAS OBTAINED FROM COGCC SCOUT CARDS.

DATE: 7/25/2014
PROJECT#: 2014021