

WELLBORE DIAGRAM

Matrix Energy, LLC
Matrix 23-29
SE SW 29-6N-65W
SHL: 490' FSL 2140' FWL
BHL: NE SW 2034' FSL 1964' FWL
Weld, CO
05-123-32222

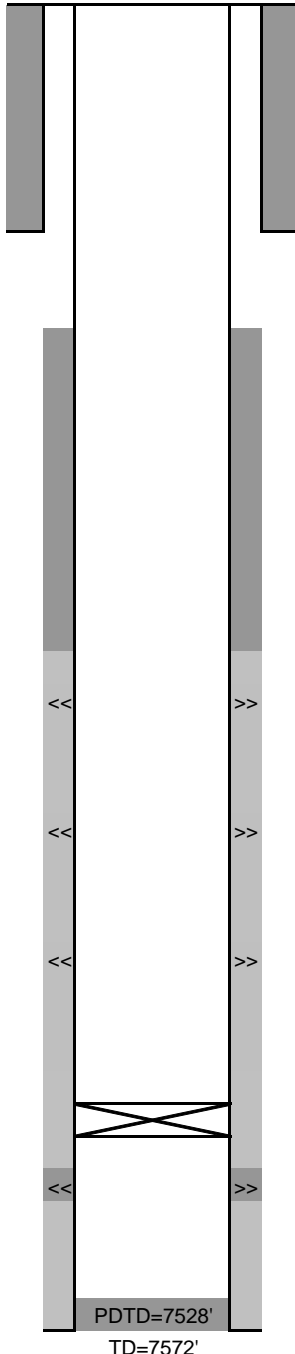
1/27/2014
SMS

O st & 39 1/2, N 100 yards, W into

G.L.= 4706
K.B.= 4722
16

8 5/8 24# @ 634', 490 sks

TOC=822'



Niobrara A 7102-7122 ft, 4 spf, 80 holes, 1/27/14
Frac Nio A w/ 3455 BLWR & 87,749 lbs 30/50 white sand

Niobrara B 7182-7200 ft, 4 spf, 72 holes, 1/27/14
Frac Nio B w/ 6376 BLWR & 116348 lbs 30/50 white sand

Niobrara C 7248-7270 ft, 4 spf, 88 holes, 1/24/14
Frac Nio C w/ 3642 BLWR & 82,334 lbs 30/50 white sand

CIBP @ 7340 on 1/14/14
Codell
7358-7368', 4 spf, 8/23/11
Frac: XXXX gal, XXXX# sand, date

Cleaned out to 7517' KB on 1/24/12
4.5" 11.6#/ft NEXT-80 LT&C @ 7544'
710 sks 11.0 ppg, 185 sks 14.6 ppg