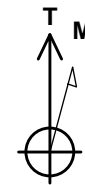
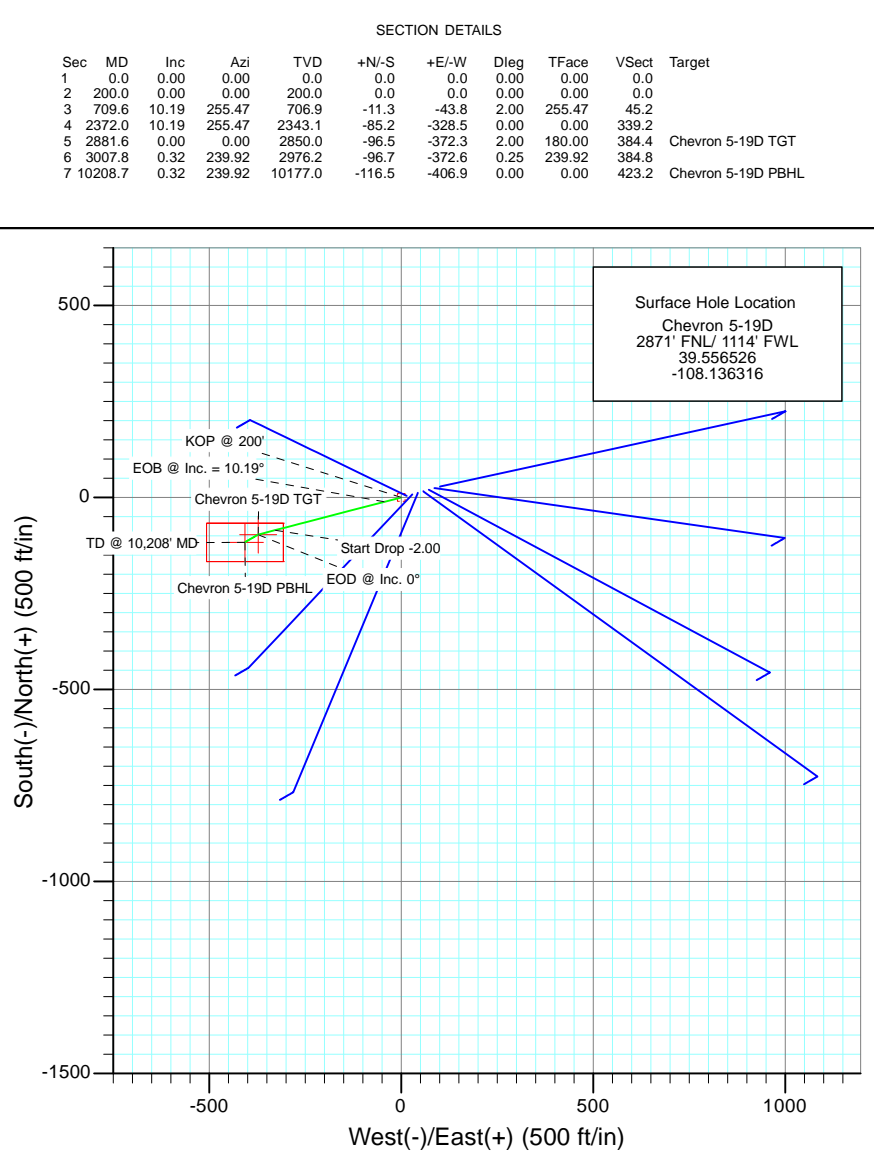
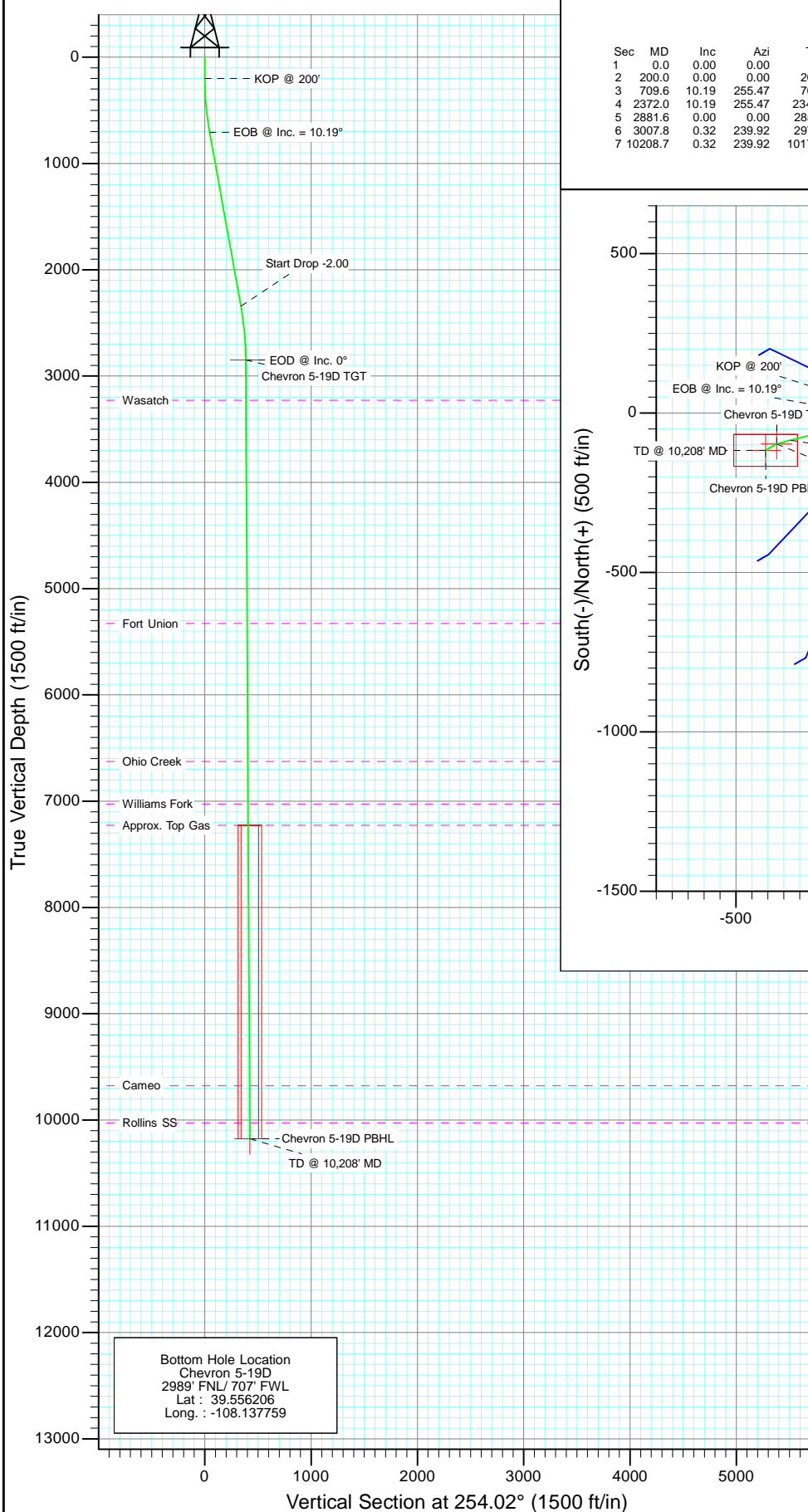


Project: Garfield County
Site: Chevron E05 696
Well: Chevron 5-19D
Wellbore: DD
Design: Plan #1



Azimuths to True North
Magnetic North: 10.48°

Magnetic Field
Strength: 52289.6snT
Dip Angle: 65.77°
Date: 1/13/2011
Model: IGRF2010

FORMATION TOP DETAILS

TVDPath	MDPath	Formation
3227.0	3258.6	Wasatch
5327.0	5358.6	Fort Union
6627.0	6658.7	Ohio Creek
7027.0	7058.7	Williams Fork
7227.0	7258.7	Approx. Top Gas
9677.0	9708.7	Cameo
10027.0	10058.7	Rollins SS

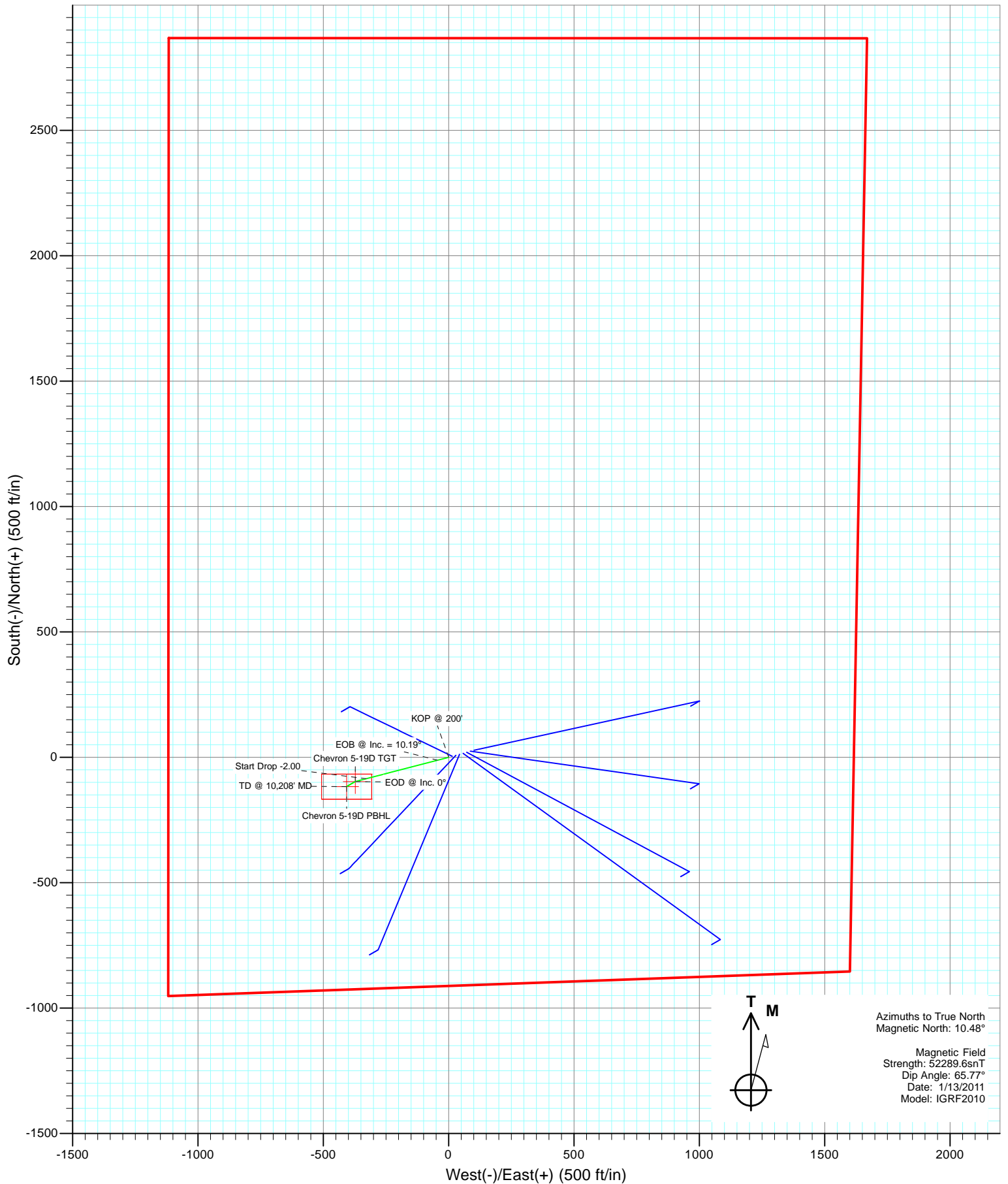
DESIGN DETAILS: Plan #1

WELL @ 8144.0ft (Original Well Elev)

Target	Azimuth	Origin	N/S	E/W	From	TVD
No Target (Freehand)	254.02	Slot	0.0	0.0		0.0



Project: Garfield County
Site: Chevron E05 696
Well: Chevron 5-19D
Wellbore: DD
Design: Pad Layout



Planning Report

Database:	EDM 5000.1 US Multi Users DB	Local Co-ordinate Reference:	Well Chevron 5-19D
Company:	Berry Petroleum Company (NAD 83)	TVD Reference:	WELL @ 8144.0ft (Original Well Elev)
Project:	Garfield County	MD Reference:	WELL @ 8144.0ft (Original Well Elev)
Site:	Chevron E05 696	North Reference:	True
Well:	Chevron 5-19D	Survey Calculation Method:	Minimum Curvature
Wellbore:	DD		
Design:	Plan #1		

Project	Garfield County		
Map System:	US State Plane 1983	System Datum:	Mean Sea Level
Geo Datum:	North American Datum 1983		
Map Zone:	Colorado Central Zone		

Site		Chevron E05 696			
Site Position:		Northing:	1,638,406.53 ft	Latitude:	39.556604
From:	Lat/Long	Easting:	2,256,881.00 ft	Longitude:	-108.135957
Position Uncertainty:	0.0 ft	Slot Radius:	13.200 in	Grid Convergence:	-1.66 °

Well	Chevron 5-19D					
Well Position	+N/-S	0.0 ft	Northing:	1,638,381.06 ft	Latitude:	39.556526
	+E/-W	0.0 ft	Easting:	2,256,778.99 ft	Longitude:	-108.136316
Position Uncertainty		0.0 ft	Wellhead Elevation:	ft	Ground Level:	8,124.0 ft

Wellbore	DD				
Magnetics	Model Name	Sample Date	Declination (°)	Dip Angle (°)	Field Strength (nT)
	IGRF2010	1/13/2011	10.48	65.77	52,290

Design	Plan #1				
Audit Notes:					
Version:	Phase:	PLAN		Tie On Depth:	0.0
Vertical Section:	Depth From (TVD) (ft)	+N/-S (ft)	+E/-W (ft)	Direction (°)	
	0.0	0.0	0.0	254.02	

Plan Sections										
Measured Depth (ft)	Inclination (°)	Azimuth (°)	Vertical Depth (ft)	+N/-S (ft)	+E/-W (ft)	Dogleg Rate (°/100ft)	Build Rate (°/100ft)	Turn Rate (°/100ft)	TFO (°)	Target
0.0	0.00	0.00	0.0	0.0	0.0	0.00	0.00	0.00	0.00	
200.0	0.00	0.00	200.0	0.0	0.0	0.00	0.00	0.00	0.00	
709.6	10.19	255.47	706.9	-11.3	-43.8	2.00	2.00	0.00	255.47	
2,372.0	10.19	255.47	2,343.1	-85.2	-328.5	0.00	0.00	0.00	0.00	
2,881.6	0.00	0.00	2,850.0	-96.5	-372.3	2.00	-2.00	0.00	180.00	Chevron 5-19D TGT
3,007.8	0.32	239.92	2,976.2	-96.7	-372.6	0.25	0.25	-95.14	239.92	
10,208.7	0.32	239.92	10,177.0	-116.5	-406.9	0.00	0.00	0.00	0.00	Chevron 5-19D PBHL

Planning Report

Database:	EDM 5000.1 US Multi Users DB	Local Co-ordinate Reference:	Well Chevron 5-19D
Company:	Berry Petroleum Company (NAD 83)	TVD Reference:	WELL @ 8144.0ft (Original Well Elev)
Project:	Garfield County	MD Reference:	WELL @ 8144.0ft (Original Well Elev)
Site:	Chevron E05 696	North Reference:	True
Well:	Chevron 5-19D	Survey Calculation Method:	Minimum Curvature
Wellbore:	DD		
Design:	Plan #1		

Planned Survey

Measured Depth (ft)	Inclination (°)	Azimuth (°)	Vertical Depth (ft)	+N/-S (ft)	+E/-W (ft)	Vertical Section (ft)	Dogleg Rate (°/100ft)	Build Rate (°/100ft)	Comments / Formations
0.0	0.00	0.00	0.0	0.0	0.0	0.0	0.00	0.00	
30.0	0.00	0.00	30.0	0.0	0.0	0.0	0.00	0.00	
60.0	0.00	0.00	60.0	0.0	0.0	0.0	0.00	0.00	
90.0	0.00	0.00	90.0	0.0	0.0	0.0	0.00	0.00	
120.0	0.00	0.00	120.0	0.0	0.0	0.0	0.00	0.00	
150.0	0.00	0.00	150.0	0.0	0.0	0.0	0.00	0.00	
180.0	0.00	0.00	180.0	0.0	0.0	0.0	0.00	0.00	
200.0	0.00	0.00	200.0	0.0	0.0	0.0	0.00	0.00	KOP @ 200'
210.0	0.20	255.47	210.0	0.0	0.0	0.0	2.00	2.00	
240.0	0.80	255.47	240.0	-0.1	-0.3	0.3	2.00	2.00	
270.0	1.40	255.47	270.0	-0.2	-0.8	0.9	2.00	2.00	
300.0	2.00	255.47	300.0	-0.4	-1.7	1.7	2.00	2.00	
330.0	2.60	255.47	330.0	-0.7	-2.9	2.9	2.00	2.00	
360.0	3.20	255.47	359.9	-1.1	-4.3	4.5	2.00	2.00	
390.0	3.80	255.47	389.9	-1.6	-6.1	6.3	2.00	2.00	
420.0	4.40	255.47	419.8	-2.1	-8.2	8.4	2.00	2.00	
450.0	5.00	255.47	449.7	-2.7	-10.6	10.9	2.00	2.00	
480.0	5.60	255.47	479.6	-3.4	-13.2	13.7	2.00	2.00	
510.0	6.20	255.47	509.4	-4.2	-16.2	16.8	2.00	2.00	
540.0	6.80	255.47	539.2	-5.1	-19.5	20.1	2.00	2.00	
570.0	7.40	255.47	569.0	-6.0	-23.1	23.9	2.00	2.00	
600.0	8.00	255.47	598.7	-7.0	-27.0	27.9	2.00	2.00	
630.0	8.60	255.47	628.4	-8.1	-31.2	32.2	2.00	2.00	
660.0	9.20	255.47	658.0	-9.2	-35.7	36.8	2.00	2.00	
690.0	9.80	255.47	687.6	-10.5	-40.5	41.8	2.00	2.00	
709.6	10.19	255.47	706.9	-11.3	-43.8	45.2	2.00	2.00	EOB @ Inc. = 10.19°
720.0	10.19	255.47	717.2	-11.8	-45.5	47.0	0.00	0.00	
750.0	10.19	255.47	746.7	-13.1	-50.7	52.3	0.00	0.00	
780.0	10.19	255.47	776.2	-14.5	-55.8	57.6	0.00	0.00	
810.0	10.19	255.47	805.7	-15.8	-61.0	62.9	0.00	0.00	
840.0	10.19	255.47	835.3	-17.1	-66.1	68.3	0.00	0.00	
870.0	10.19	255.47	864.8	-18.5	-71.2	73.6	0.00	0.00	
900.0	10.19	255.47	894.3	-19.8	-76.4	78.9	0.00	0.00	
930.0	10.19	255.47	923.8	-21.1	-81.5	84.2	0.00	0.00	
960.0	10.19	255.47	953.4	-22.5	-86.6	89.5	0.00	0.00	
990.0	10.19	255.47	982.9	-23.8	-91.8	94.8	0.00	0.00	
1,020.0	10.19	255.47	1,012.4	-25.1	-96.9	100.1	0.00	0.00	
1,050.0	10.19	255.47	1,041.9	-26.5	-102.1	105.4	0.00	0.00	
1,080.0	10.19	255.47	1,071.5	-27.8	-107.2	110.7	0.00	0.00	
1,110.0	10.19	255.47	1,101.0	-29.1	-112.3	116.0	0.00	0.00	
1,140.0	10.19	255.47	1,130.5	-30.5	-117.5	121.3	0.00	0.00	
1,170.0	10.19	255.47	1,160.1	-31.8	-122.6	126.6	0.00	0.00	
1,200.0	10.19	255.47	1,189.6	-33.1	-127.8	131.9	0.00	0.00	
1,230.0	10.19	255.47	1,219.1	-34.5	-132.9	137.2	0.00	0.00	
1,260.0	10.19	255.47	1,248.6	-35.8	-138.0	142.5	0.00	0.00	
1,290.0	10.19	255.47	1,278.2	-37.1	-143.2	147.9	0.00	0.00	
1,320.0	10.19	255.47	1,307.7	-38.4	-148.3	153.2	0.00	0.00	
1,350.0	10.19	255.47	1,337.2	-39.8	-153.4	158.5	0.00	0.00	
1,380.0	10.19	255.47	1,366.7	-41.1	-158.6	163.8	0.00	0.00	
1,410.0	10.19	255.47	1,396.3	-42.4	-163.7	169.1	0.00	0.00	
1,440.0	10.19	255.47	1,425.8	-43.8	-168.9	174.4	0.00	0.00	
1,470.0	10.19	255.47	1,455.3	-45.1	-174.0	179.7	0.00	0.00	

Planning Report

Database:	EDM 5000.1 US Multi Users DB	Local Co-ordinate Reference:	Well Chevron 5-19D
Company:	Berry Petroleum Company (NAD 83)	TVD Reference:	WELL @ 8144.0ft (Original Well Elev)
Project:	Garfield County	MD Reference:	WELL @ 8144.0ft (Original Well Elev)
Site:	Chevron E05 696	North Reference:	True
Well:	Chevron 5-19D	Survey Calculation Method:	Minimum Curvature
Wellbore:	DD		
Design:	Plan #1		

Planned Survey

Measured Depth (ft)	Inclination (°)	Azimuth (°)	Vertical Depth (ft)	+N/-S (ft)	+E/-W (ft)	Vertical Section (ft)	Dogleg Rate (°/100ft)	Build Rate (°/100ft)	Comments / Formations
1,500.0	10.19	255.47	1,484.8	-46.4	-179.1	185.0	0.00	0.00	
1,530.0	10.19	255.47	1,514.4	-47.8	-184.3	190.3	0.00	0.00	
1,560.0	10.19	255.47	1,543.9	-49.1	-189.4	195.6	0.00	0.00	
1,590.0	10.19	255.47	1,573.4	-50.4	-194.6	200.9	0.00	0.00	
1,620.0	10.19	255.47	1,603.0	-51.8	-199.7	206.2	0.00	0.00	
1,650.0	10.19	255.47	1,632.5	-53.1	-204.8	211.5	0.00	0.00	
1,680.0	10.19	255.47	1,662.0	-54.4	-210.0	216.8	0.00	0.00	
1,710.0	10.19	255.47	1,691.5	-55.8	-215.1	222.1	0.00	0.00	
1,740.0	10.19	255.47	1,721.1	-57.1	-220.2	227.5	0.00	0.00	
1,770.0	10.19	255.47	1,750.6	-58.4	-225.4	232.8	0.00	0.00	
1,800.0	10.19	255.47	1,780.1	-59.8	-230.5	238.1	0.00	0.00	
1,830.0	10.19	255.47	1,809.6	-61.1	-235.7	243.4	0.00	0.00	
1,860.0	10.19	255.47	1,839.2	-62.4	-240.8	248.7	0.00	0.00	
1,890.0	10.19	255.47	1,868.7	-63.8	-245.9	254.0	0.00	0.00	
1,920.0	10.19	255.47	1,898.2	-65.1	-251.1	259.3	0.00	0.00	
1,950.0	10.19	255.47	1,927.7	-66.4	-256.2	264.6	0.00	0.00	
1,980.0	10.19	255.47	1,957.3	-67.8	-261.4	269.9	0.00	0.00	
2,010.0	10.19	255.47	1,986.8	-69.1	-266.5	275.2	0.00	0.00	
2,040.0	10.19	255.47	2,016.3	-70.4	-271.6	280.5	0.00	0.00	
2,070.0	10.19	255.47	2,045.9	-71.7	-276.8	285.8	0.00	0.00	
2,100.0	10.19	255.47	2,075.4	-73.1	-281.9	291.1	0.00	0.00	
2,130.0	10.19	255.47	2,104.9	-74.4	-287.0	296.4	0.00	0.00	
2,160.0	10.19	255.47	2,134.4	-75.7	-292.2	301.7	0.00	0.00	
2,190.0	10.19	255.47	2,164.0	-77.1	-297.3	307.0	0.00	0.00	
2,220.0	10.19	255.47	2,193.5	-78.4	-302.5	312.4	0.00	0.00	
2,250.0	10.19	255.47	2,223.0	-79.7	-307.6	317.7	0.00	0.00	
2,280.0	10.19	255.47	2,252.5	-81.1	-312.7	323.0	0.00	0.00	
2,310.0	10.19	255.47	2,282.1	-82.4	-317.9	328.3	0.00	0.00	
2,340.0	10.19	255.47	2,311.6	-83.7	-323.0	333.6	0.00	0.00	
2,370.0	10.19	255.47	2,341.1	-85.1	-328.1	338.9	0.00	0.00	
2,372.0	10.19	255.47	2,343.1	-85.2	-328.5	339.2	0.00	0.00	Start Drop -2.00
2,400.0	9.63	255.47	2,370.7	-86.4	-333.2	344.1	2.00	-2.00	
2,430.0	9.03	255.47	2,400.3	-87.6	-337.9	348.9	2.00	-2.00	
2,460.0	8.43	255.47	2,429.9	-88.7	-342.3	353.5	2.00	-2.00	
2,490.0	7.83	255.47	2,459.6	-89.8	-346.4	357.7	2.00	-2.00	

Targets

Target Name	Dip Angle (°)	Dip Dir. (°)	TVD (ft)	+N/-S (ft)	+E/-W (ft)	Northing (ft)	Easting (ft)	Latitude	Longitude
- hit/miss target									
- Shape									
Chevron 5-19D TGT	0.00	0.00	2,850.0	-96.5	-372.3	1,638,295.40	2,256,404.10	39.556261	-108.137636
- plan misses target center by 391.3ft at 2490.0ft MD (2459.6 TVD, -89.8 N, -346.4 E)									
- Point									
Chevron 5-19D PBHL	0.00	0.00	10,177.0	-116.5	-406.9	1,638,276.37	2,256,368.91	39.556206	-108.137759
- plan misses target center by 7717.7ft at 2490.0ft MD (2459.6 TVD, -89.8 N, -346.4 E)									
- Rectangle (sides W100.0 H200.0 D0.0)									

Planning Report

Database:	EDM 5000.1 US Multi Users DB	Local Co-ordinate Reference:	Well Chevron 5-19D
Company:	Berry Petroleum Company (NAD 83)	TVD Reference:	WELL @ 8144.0ft (Original Well Elev)
Project:	Garfield County	MD Reference:	WELL @ 8144.0ft (Original Well Elev)
Site:	Chevron E05 696	North Reference:	True
Well:	Chevron 5-19D	Survey Calculation Method:	Minimum Curvature
Wellbore:	DD		
Design:	Plan #1		

Planned Survey

Measured Depth (ft)	Inclination (°)	Azimuth (°)	Vertical Depth (ft)	+N/-S (ft)	+E/-W (ft)	Vertical Section (ft)	Dogleg Rate (°/100ft)	Build Rate (°/100ft)	Comments / Formations
2,500.0	7.63	255.47	2,469.5	-90.1	-347.7	359.1	2.00	-2.00	
2,600.0	5.63	255.47	2,568.9	-93.0	-358.9	370.6	2.00	-2.00	
2,700.0	3.63	255.47	2,668.5	-95.1	-366.7	378.7	2.00	-2.00	
2,800.0	1.63	255.47	2,768.4	-96.2	-371.1	383.3	2.00	-2.00	
2,881.6	0.00	0.00	2,850.0	-96.5	-372.3	384.4	2.00	-2.00	EOD @ Inc. 0° - Chevron 5-19D TGT
2,900.0	0.05	239.92	2,868.4	-96.5	-372.3	384.4	0.25	0.25	
3,000.0	0.30	239.92	2,968.4	-96.7	-372.5	384.7	0.25	0.25	
3,007.8	0.32	239.92	2,976.2	-96.7	-372.6	384.8	0.25	0.25	
3,100.0	0.32	239.92	3,068.4	-96.9	-373.0	385.3	0.00	0.00	
3,200.0	0.32	239.92	3,168.4	-97.2	-373.5	385.8	0.00	0.00	
3,258.6	0.32	239.92	3,227.0	-97.4	-373.7	386.1	0.00	0.00	Wasatch
3,300.0	0.32	239.92	3,268.4	-97.5	-373.9	386.3	0.00	0.00	
3,400.0	0.32	239.92	3,368.4	-97.8	-374.4	386.9	0.00	0.00	
3,500.0	0.32	239.92	3,468.4	-98.0	-374.9	387.4	0.00	0.00	
3,600.0	0.32	239.92	3,568.4	-98.3	-375.4	387.9	0.00	0.00	
3,700.0	0.32	239.92	3,668.4	-98.6	-375.8	388.5	0.00	0.00	
3,800.0	0.32	239.92	3,768.4	-98.9	-376.3	389.0	0.00	0.00	
3,900.0	0.32	239.92	3,868.4	-99.1	-376.8	389.5	0.00	0.00	
4,000.0	0.32	239.92	3,968.4	-99.4	-377.3	390.1	0.00	0.00	
4,100.0	0.32	239.92	4,068.4	-99.7	-377.8	390.6	0.00	0.00	
4,200.0	0.32	239.92	4,168.4	-100.0	-378.2	391.1	0.00	0.00	
4,300.0	0.32	239.92	4,268.4	-100.2	-378.7	391.7	0.00	0.00	
4,400.0	0.32	239.92	4,368.4	-100.5	-379.2	392.2	0.00	0.00	
4,500.0	0.32	239.92	4,468.4	-100.8	-379.7	392.7	0.00	0.00	
4,600.0	0.32	239.92	4,568.4	-101.1	-380.1	393.3	0.00	0.00	
4,700.0	0.32	239.92	4,668.4	-101.3	-380.6	393.8	0.00	0.00	
4,800.0	0.32	239.92	4,768.4	-101.6	-381.1	394.3	0.00	0.00	
4,900.0	0.32	239.92	4,868.4	-101.9	-381.6	394.9	0.00	0.00	
5,000.0	0.32	239.92	4,968.4	-102.2	-382.0	395.4	0.00	0.00	
5,100.0	0.32	239.92	5,068.4	-102.4	-382.5	395.9	0.00	0.00	
5,200.0	0.32	239.92	5,168.4	-102.7	-383.0	396.5	0.00	0.00	
5,300.0	0.32	239.92	5,268.4	-103.0	-383.5	397.0	0.00	0.00	
5,358.6	0.32	239.92	5,327.0	-103.2	-383.8	397.3	0.00	0.00	Fort Union
5,400.0	0.32	239.92	5,368.4	-103.3	-384.0	397.5	0.00	0.00	
5,500.0	0.32	239.92	5,468.4	-103.6	-384.4	398.1	0.00	0.00	
5,600.0	0.32	239.92	5,568.4	-103.8	-384.9	398.6	0.00	0.00	
5,700.0	0.32	239.92	5,668.4	-104.1	-385.4	399.1	0.00	0.00	
5,800.0	0.32	239.92	5,768.4	-104.4	-385.9	399.7	0.00	0.00	
5,900.0	0.32	239.92	5,868.4	-104.7	-386.3	400.2	0.00	0.00	
6,000.0	0.32	239.92	5,968.4	-104.9	-386.8	400.8	0.00	0.00	
6,100.0	0.32	239.92	6,068.4	-105.2	-387.3	401.3	0.00	0.00	
6,200.0	0.32	239.92	6,168.4	-105.5	-387.8	401.8	0.00	0.00	
6,300.0	0.32	239.92	6,268.4	-105.8	-388.2	402.4	0.00	0.00	
6,400.0	0.32	239.92	6,368.4	-106.0	-388.7	402.9	0.00	0.00	
6,500.0	0.32	239.92	6,468.4	-106.3	-389.2	403.4	0.00	0.00	
6,600.0	0.32	239.92	6,568.3	-106.6	-389.7	404.0	0.00	0.00	
6,658.7	0.32	239.92	6,627.0	-106.7	-389.9	404.3	0.00	0.00	Ohio Creek
6,700.0	0.32	239.92	6,668.3	-106.9	-390.1	404.5	0.00	0.00	
6,800.0	0.32	239.92	6,768.3	-107.1	-390.6	405.0	0.00	0.00	
6,900.0	0.32	239.92	6,868.3	-107.4	-391.1	405.6	0.00	0.00	
7,000.0	0.32	239.92	6,968.3	-107.7	-391.6	406.1	0.00	0.00	
7,058.7	0.32	239.92	7,027.0	-107.9	-391.9	406.4	0.00	0.00	Williams Fork

Planning Report

Database:	EDM 5000.1 US Multi Users DB	Local Co-ordinate Reference:	Well Chevron 5-19D
Company:	Berry Petroleum Company (NAD 83)	TVD Reference:	WELL @ 8144.0ft (Original Well Elev)
Project:	Garfield County	MD Reference:	WELL @ 8144.0ft (Original Well Elev)
Site:	Chevron E05 696	North Reference:	True
Well:	Chevron 5-19D	Survey Calculation Method:	Minimum Curvature
Wellbore:	DD		
Design:	Plan #1		

Planned Survey									
Measured Depth (ft)	Inclination (°)	Azimuth (°)	Vertical Depth (ft)	+N/-S (ft)	+E/-W (ft)	Vertical Section (ft)	Dogleg Rate (°/100ft)	Build Rate (°/100ft)	Comments / Formations
7,100.0	0.32	239.92	7,068.3	-108.0	-392.1	406.6	0.00	0.00	
7,200.0	0.32	239.92	7,168.3	-108.2	-392.5	407.2	0.00	0.00	
7,258.7	0.32	239.92	7,227.0	-108.4	-392.8	407.5	0.00	0.00	Approx. Top Gas
7,300.0	0.32	239.92	7,268.3	-108.5	-393.0	407.7	0.00	0.00	
7,400.0	0.32	239.92	7,368.3	-108.8	-393.5	408.2	0.00	0.00	
7,500.0	0.32	239.92	7,468.3	-109.1	-394.0	408.8	0.00	0.00	
7,600.0	0.32	239.92	7,568.3	-109.3	-394.4	409.3	0.00	0.00	
7,700.0	0.32	239.92	7,668.3	-109.6	-394.9	409.8	0.00	0.00	
7,800.0	0.32	239.92	7,768.3	-109.9	-395.4	410.4	0.00	0.00	
7,900.0	0.32	239.92	7,868.3	-110.2	-395.9	410.9	0.00	0.00	
8,000.0	0.32	239.92	7,968.3	-110.5	-396.3	411.4	0.00	0.00	
8,100.0	0.32	239.92	8,068.3	-110.7	-396.8	412.0	0.00	0.00	
8,200.0	0.32	239.92	8,168.3	-111.0	-397.3	412.5	0.00	0.00	
8,300.0	0.32	239.92	8,268.3	-111.3	-397.8	413.0	0.00	0.00	
8,400.0	0.32	239.92	8,368.3	-111.6	-398.2	413.6	0.00	0.00	
8,500.0	0.32	239.92	8,468.3	-111.8	-398.7	414.1	0.00	0.00	
8,600.0	0.32	239.92	8,568.3	-112.1	-399.2	414.6	0.00	0.00	
8,700.0	0.32	239.92	8,668.3	-112.4	-399.7	415.2	0.00	0.00	
8,800.0	0.32	239.92	8,768.3	-112.7	-400.2	415.7	0.00	0.00	
8,900.0	0.32	239.92	8,868.3	-112.9	-400.6	416.2	0.00	0.00	
9,000.0	0.32	239.92	8,968.3	-113.2	-401.1	416.8	0.00	0.00	
9,100.0	0.32	239.92	9,068.3	-113.5	-401.6	417.3	0.00	0.00	
9,200.0	0.32	239.92	9,168.3	-113.8	-402.1	417.8	0.00	0.00	
9,300.0	0.32	239.92	9,268.3	-114.0	-402.5	418.4	0.00	0.00	
9,400.0	0.32	239.92	9,368.3	-114.3	-403.0	418.9	0.00	0.00	
9,500.0	0.32	239.92	9,468.3	-114.6	-403.5	419.4	0.00	0.00	
9,600.0	0.32	239.92	9,568.3	-114.9	-404.0	420.0	0.00	0.00	
9,700.0	0.32	239.92	9,668.3	-115.1	-404.4	420.5	0.00	0.00	
9,708.7	0.32	239.92	9,677.0	-115.2	-404.5	420.6	0.00	0.00	Cameo
9,800.0	0.32	239.92	9,768.3	-115.4	-404.9	421.0	0.00	0.00	
9,900.0	0.32	239.92	9,868.3	-115.7	-405.4	421.6	0.00	0.00	
10,000.0	0.32	239.92	9,968.3	-116.0	-405.9	422.1	0.00	0.00	
10,058.7	0.32	239.92	10,027.0	-116.1	-406.2	422.4	0.00	0.00	Rollins SS
10,100.0	0.32	239.92	10,068.3	-116.2	-406.3	422.7	0.00	0.00	
10,200.0	0.32	239.92	10,168.3	-116.5	-406.8	423.2	0.00	0.00	
10,208.7	0.32	239.92	10,177.0	-116.5	-406.9	423.2	0.00	0.00	TD @ 10,208' MD - Chevron 5-19D PBHL

Targets									
Target Name	Dip Angle (°)	Dip Dir. (°)	TVD (ft)	+N/-S (ft)	+E/-W (ft)	Northing (ft)	Easting (ft)	Latitude	Longitude
- hit/miss target									
- Shape									
Chevron 5-19D TGT	0.00	0.00	2,850.0	-96.5	-372.3	1,638,295.40	2,256,404.10	39.556261	-108.137636
- plan hits target center									
- Point									
Chevron 5-19D PBHL	0.00	0.00	10,177.0	-116.5	-406.9	1,638,276.37	2,256,368.91	39.556206	-108.137759
- plan hits target center									
- Rectangle (sides W100.0 H200.0 D0.0)									

Planning Report

Database:	EDM 5000.1 US Multi Users DB	Local Co-ordinate Reference:	Well Chevron 5-19D
Company:	Berry Petroleum Company (NAD 83)	TVD Reference:	WELL @ 8144.0ft (Original Well Elev)
Project:	Garfield County	MD Reference:	WELL @ 8144.0ft (Original Well Elev)
Site:	Chevron E05 696	North Reference:	True
Well:	Chevron 5-19D	Survey Calculation Method:	Minimum Curvature
Wellbore:	DD		
Design:	Plan #1		

Formations						
Measured Depth (ft)	Vertical Depth (ft)	Name	Lithology	Dip (°)	Dip Direction (°)	
3,258.6	3,227.0	Wasatch				
5,358.6	5,327.0	Fort Union				
6,658.7	6,627.0	Ohio Creek				
7,058.7	7,027.0	Williams Fork				
7,258.7	7,227.0	Approx. Top Gas				
9,708.7	9,677.0	Cameo				
10,058.7	10,027.0	Rollins SS				

Plan Annotations					
Measured Depth (ft)	Vertical Depth (ft)	Local Coordinates			
		+N/-S (ft)	+E/-W (ft)	Comment	
200.0	200.0	0.0	0.0	KOP @ 200'	
709.6	706.9	-11.3	-43.8	EOB @ Inc. = 10.19°	
2,372.0	2,343.1	-85.2	-328.5	Start Drop -2.00	
2,881.6	2,850.0	-96.5	-372.3	EOD @ Inc. 0°	
10,208.7	10,177.0	-116.5	-406.9	TD @ 10,208' MD	

Berry Petroleum Company (NAD 83)

**Garfield County
Chevron E05 696
Chevron 5-19D
DD
Plan #1**

Anticollision Report

14 January, 2011

Anticollision Report

Company:	Berry Petroleum Company (NAD 83)	Local Co-ordinate Reference:	Well Chevron 5-19D
Project:	Garfield County	TVD Reference:	WELL @ 8144.0ft (Original Well Elev)
Reference Site:	Chevron E05 696	MD Reference:	WELL @ 8144.0ft (Original Well Elev)
Site Error:	0.0ft	North Reference:	True
Reference Well:	Chevron 5-19D	Survey Calculation Method:	Minimum Curvature
Well Error:	0.0ft	Output errors are at	2.00 sigma
Reference Wellbore	DD	Database:	EDM 5000.1 US Multi Users DB
Reference Design:	Plan #1	Offset TVD Reference:	Offset Datum

Reference	Plan #1		
Filter type:	GLOBAL FILTER APPLIED: All wellpaths within 200'+ 100/1000 of reference		
Interpolation Method:	MD Interval 100.0ft	Error Model:	Systematic Ellipse
Depth Range:	Unlimited	Scan Method:	Closest Approach 3D
Results Limited by:	Maximum center-center distance of 1,220.9ft	Error Surface:	Elliptical Conic
Warning Levels Evaluated at:	2.00 Sigma		

Survey Tool Program	Date	1/14/2011		
From (ft)	To (ft)	Survey (Wellbore)	Tool Name	Description
0.0	10,208.7	Plan #1 (DD)	MWD	Geolink MWD

Summary						
Site Name	Reference Measured Depth (ft)	Offset Measured Depth (ft)	Distance Between Centres (ft)	Distance Between Ellipses (ft)	Separation Factor	Warning
Offset Well - Wellbore - Design						
Chevron E05 696						
Chevron 5-17D - DD - Plan #1	200.0	200.0	45.1	44.4	71.707	CC, ES
Chevron 5-17D - DD - Plan #1	10,200.0	10,219.1	677.5	638.7	17.464	SF
Chevron 5-18D - DD - Plan #1	200.0	200.0	30.1	29.5	47.949	CC
Chevron 5-18D - DD - Plan #1	300.0	300.9	30.4	29.4	31.006	ES
Chevron 5-18D - DD - Plan #1	10,200.0	10,214.3	348.1	309.7	9.066	SF
Chevron 5-20D - DD - Plan #1	200.0	200.0	15.2	14.6	24.191	CC, ES
Chevron 5-20D - DD - Plan #1	10,208.7	10,216.1	299.1	260.6	7.756	SF
Chevron 5-5D - DD - Plan #1	200.0	200.0	60.0	59.4	95.465	CC, ES
Chevron 5-5D - DD - Plan #1	5,000.0	4,835.0	1,205.5	1,186.5	63.550	SF
Chevron 5-6D - DD - Plan #1	200.0	200.0	74.9	74.3	119.223	CC, ES
Chevron 5-6D - DD - Plan #1	600.0	586.2	123.7	121.7	60.503	SF
Chevron 5-7D - DD - Plan #1	200.0	200.0	90.2	89.6	143.569	CC, ES
Chevron 5-7D - DD - Plan #1	600.0	581.9	142.9	140.9	71.489	SF
Chevron 5-8D - DD - Plan #1	200.0	200.0	105.1	104.5	167.329	CC, ES
Chevron 5-8D - DD - Plan #1	4,600.0	4,417.1	1,208.6	1,193.0	77.374	SF

Anticollision Report

Company:	Berry Petroleum Company (NAD 83)	Local Co-ordinate Reference:	Well Chevron 5-19D
Project:	Garfield County	TVD Reference:	WELL @ 8144.0ft (Original Well Elev)
Reference Site:	Chevron E05 696	MD Reference:	WELL @ 8144.0ft (Original Well Elev)
Site Error:	0.0ft	North Reference:	True
Reference Well:	Chevron 5-19D	Survey Calculation Method:	Minimum Curvature
Well Error:	0.0ft	Output errors are at	2.00 sigma
Reference Wellbore	DD	Database:	EDM 5000.1 US Multi Users DB
Reference Design:	Plan #1	Offset TVD Reference:	Offset Datum

Offset Design Chevron E05 696 - Chevron 5-17D - DD - Plan #1													Offset Site Error:	0.0 ft
Survey Program: 0-MWD													Offset Well Error:	0.0 ft
Reference		Offset		Semi Major Axis			Distance				Total Uncertainty Axis	Separation Factor	Warning	
Measured Depth (ft)	Vertical Depth (ft)	Measured Depth (ft)	Vertical Depth (ft)	Reference (ft)	Offset (ft)	Highside Toolface (°)	Offset Wellbore Centre +N/-S (ft)	+E/-W (ft)	Between Centres (ft)	Between Ellipses (ft)				
0.0	0.0	0.0	0.0	0.0	0.0	74.53	12.0	43.4	45.1					
100.0	100.0	100.0	100.0	0.1	0.1	74.53	12.0	43.4	45.1	44.8	0.28	161.340		
200.0	200.0	200.0	200.0	0.3	0.3	74.53	12.0	43.4	45.1	44.4	0.63	71.707 CC, ES		
300.0	300.0	301.0	300.9	0.5	0.5	-179.15	10.4	42.7	45.7	44.8	0.98	46.606		
400.0	399.8	401.8	401.6	0.7	0.7	-174.11	5.5	40.7	48.0	46.7	1.35	35.652		
500.0	499.5	502.3	501.7	0.9	0.9	-166.82	-2.7	37.3	52.6	50.8	1.75	30.112		
600.0	598.7	602.3	601.0	1.2	1.2	-158.66	-14.0	32.6	60.0	57.8	2.20	27.233		
700.0	697.5	701.8	699.3	1.5	1.5	-150.90	-28.5	26.6	70.9	68.2	2.75	25.771		
800.0	795.9	800.6	796.5	1.8	1.8	-144.92	-44.4	19.9	84.4	81.0	3.35	25.188		
900.0	894.3	899.4	893.8	2.2	2.2	-140.61	-60.4	13.3	98.4	94.5	3.97	24.804		
1,000.0	992.7	998.2	991.0	2.5	2.5	-137.40	-76.4	6.6	112.9	108.3	4.60	24.547		
1,100.0	1,091.2	1,096.9	1,088.3	2.9	2.8	-134.92	-92.4	0.0	127.7	122.4	5.24	24.372		
1,200.0	1,189.6	1,195.7	1,185.5	3.2	3.2	-132.95	-108.3	-6.6	142.6	136.7	5.88	24.250		
1,300.0	1,288.0	1,294.5	1,282.7	3.6	3.5	-131.36	-124.3	-13.3	157.7	151.2	6.53	24.164		
1,400.0	1,386.4	1,393.2	1,380.0	3.9	3.9	-130.04	-140.3	-19.9	172.9	165.7	7.17	24.101		
1,500.0	1,484.8	1,492.0	1,477.2	4.3	4.2	-128.94	-156.3	-26.6	188.1	180.3	7.82	24.056		
1,600.0	1,583.3	1,590.8	1,574.5	4.6	4.6	-128.01	-172.3	-33.2	203.4	195.0	8.47	24.022		
1,700.0	1,681.7	1,689.5	1,671.7	5.0	4.9	-127.20	-188.2	-39.9	218.8	209.7	9.12	23.997		
1,800.0	1,780.1	1,788.3	1,769.0	5.4	5.3	-126.50	-204.2	-46.5	234.2	224.4	9.77	23.978		
1,900.0	1,878.5	1,887.1	1,866.2	5.7	5.6	-125.89	-220.2	-53.2	249.6	239.2	10.42	23.964		
2,000.0	1,977.0	1,985.9	1,963.4	6.1	5.9	-125.35	-236.2	-59.8	265.1	254.0	11.07	23.954		
2,100.0	2,075.4	2,084.6	2,060.7	6.4	6.3	-124.86	-252.1	-66.5	280.5	268.8	11.72	23.946		
2,200.0	2,173.8	2,183.4	2,157.9	6.8	6.6	-124.43	-268.1	-73.1	296.0	283.6	12.36	23.940		
2,300.0	2,272.2	2,282.2	2,255.2	7.1	7.0	-124.04	-284.1	-79.8	311.5	298.5	13.01	23.936		
2,400.0	2,370.7	2,381.0	2,352.4	7.5	7.3	-123.74	-300.1	-86.4	326.9	313.3	13.66	23.926		
2,500.0	2,469.5	2,479.9	2,449.8	7.8	7.7	-123.28	-316.1	-93.1	341.0	326.7	14.28	23.876		
2,600.0	2,568.9	2,578.9	2,547.3	8.0	8.0	-122.36	-332.1	-99.7	353.2	338.4	14.86	23.766		
2,700.0	2,668.5	2,677.9	2,644.7	8.2	8.4	-121.02	-348.1	-106.4	363.8	348.4	15.40	23.623		
2,800.0	2,768.4	2,776.7	2,742.0	8.4	8.7	-119.29	-364.1	-113.0	372.9	357.0	15.89	23.472		
2,900.0	2,868.4	2,875.3	2,839.1	8.5	9.1	-101.62	-380.0	-119.7	380.9	364.5	16.32	23.334		
3,000.0	2,968.4	2,973.8	2,936.1	8.6	9.4	-99.34	-396.0	-126.3	388.9	372.2	16.74	23.234		
3,100.0	3,068.4	3,072.3	3,033.1	8.7	9.8	-97.21	-411.9	-132.9	397.6	380.5	17.14	23.205		
3,200.0	3,168.4	3,170.8	3,130.1	8.8	10.1	-95.17	-427.9	-139.6	406.8	389.3	17.51	23.233		
3,300.0	3,268.4	3,269.3	3,227.1	8.9	10.5	-93.23	-443.8	-146.2	416.6	398.7	17.87	23.310		
3,400.0	3,368.4	3,367.9	3,324.1	9.0	10.8	-91.37	-459.7	-152.8	426.7	408.5	18.21	23.430		
3,500.0	3,468.4	3,466.4	3,421.1	9.2	11.2	-89.60	-475.7	-159.4	437.3	418.8	18.54	23.586		
3,600.0	3,568.4	3,564.9	3,518.1	9.3	11.5	-87.91	-491.6	-166.1	448.4	429.5	18.86	23.774		
3,700.0	3,668.4	3,663.5	3,615.1	9.4	11.8	-86.30	-507.5	-172.7	459.7	440.6	19.17	23.988		
3,800.0	3,768.4	3,762.0	3,712.1	9.5	12.2	-84.77	-523.5	-179.3	471.5	452.0	19.46	24.223		
3,900.0	3,868.4	3,860.5	3,809.1	9.7	12.5	-83.32	-539.4	-186.0	483.5	463.8	19.75	24.478		
4,000.0	3,968.4	3,959.0	3,906.1	9.8	12.9	-81.94	-555.4	-192.6	495.9	475.8	20.04	24.747		
4,100.0	4,068.4	4,057.6	4,003.1	9.9	13.2	-80.62	-571.3	-199.2	508.5	488.2	20.32	25.029		
4,200.0	4,168.4	4,156.1	4,100.1	10.1	13.6	-79.37	-587.2	-205.9	521.4	500.8	20.59	25.321		
4,300.0	4,268.4	4,254.6	4,197.1	10.2	13.9	-78.17	-603.2	-212.5	534.5	513.6	20.86	25.621		
4,400.0	4,368.4	4,353.2	4,294.1	10.3	14.3	-77.04	-619.1	-219.1	547.8	526.7	21.13	25.927		
4,500.0	4,468.4	4,451.7	4,391.1	10.5	14.6	-75.95	-635.1	-225.7	561.3	539.9	21.39	26.237		
4,600.0	4,568.4	4,550.2	4,488.1	10.6	15.0	-74.92	-651.0	-232.4	575.1	553.4	21.66	26.550		
4,700.0	4,668.4	4,648.7	4,585.1	10.7	15.3	-73.94	-666.9	-239.0	589.0	567.0	21.92	26.864		
4,800.0	4,768.4	4,747.3	4,682.1	10.9	15.7	-73.00	-682.9	-245.6	603.0	580.8	22.19	27.179		
4,900.0	4,868.4	4,845.8	4,779.1	11.0	16.0	-72.10	-698.8	-252.3	617.2	594.8	22.45	27.493		
5,000.0	4,968.4	4,944.3	4,876.1	11.2	16.4	-71.25	-714.7	-258.9	631.6	608.9	22.71	27.806		
5,100.0	5,068.4	5,048.8	4,979.0	11.3	16.7	-70.39	-731.5	-265.9	646.0	623.0	22.98	28.109		

CC - Min centre to center distance or convergent point, SF - min separation factor, ES - min ellipse separation

Anticollision Report

Company:	Berry Petroleum Company (NAD 83)	Local Co-ordinate Reference:	Well Chevron 5-19D
Project:	Garfield County	TVD Reference:	WELL @ 8144.0ft (Original Well Elev)
Reference Site:	Chevron E05 696	MD Reference:	WELL @ 8144.0ft (Original Well Elev)
Site Error:	0.0ft	North Reference:	True
Reference Well:	Chevron 5-19D	Survey Calculation Method:	Minimum Curvature
Well Error:	0.0ft	Output errors are at	2.00 sigma
Reference Wellbore	DD	Database:	EDM 5000.1 US Multi Users DB
Reference Design:	Plan #1	Offset TVD Reference:	Offset Datum

Offset Design Chevron E05 696 - Chevron 5-17D - DD - Plan #1													Offset Site Error:	0.0 ft
Survey Program: 0-MWD													Offset Well Error:	0.0 ft
Reference		Offset		Semi Major Axis			Distance				Total		Warning	
Measured Depth (ft)	Vertical Depth (ft)	Measured Depth (ft)	Vertical Depth (ft)	Reference (ft)	Offset (ft)	Highside Toolface (°)	Offset Wellbore Centre +N/-S (ft)	+E/-W (ft)	Between Centres (ft)	Between Ellipses (ft)	Uncertainty Axis	Separation Factor		
5,200.0	5,168.4	5,171.4	5,100.4	11.4	17.1	-69.61	-747.7	-272.6	657.9	634.6	23.27	28.276		
5,300.0	5,268.4	5,295.2	5,223.6	11.6	17.3	-69.09	-759.2	-277.4	666.2	642.7	23.56	28.276		
5,400.0	5,368.4	5,419.9	5,348.0	11.7	17.5	-68.82	-765.8	-280.1	670.9	647.1	23.86	28.116		
5,500.0	5,468.4	5,540.1	5,468.2	11.9	17.6	-68.79	-767.5	-280.8	672.0	647.8	24.17	27.800		
5,600.0	5,568.4	5,639.0	5,567.1	12.0	17.7	-68.81	-767.6	-281.1	671.9	647.4	24.46	27.467		
5,609.8	5,578.1	5,648.7	5,576.8	12.0	17.8	-68.81	-767.7	-281.1	671.9	647.4	24.49	27.435		
5,700.0	5,668.4	5,738.2	5,666.3	12.2	17.8	-68.80	-768.0	-281.7	671.9	647.2	24.75	27.148		
5,800.0	5,768.4	5,838.2	5,766.3	12.3	18.0	-68.77	-768.4	-282.5	672.0	647.0	25.04	26.836		
5,900.0	5,868.4	5,938.2	5,866.2	12.5	18.1	-68.75	-768.9	-283.2	672.2	646.8	25.34	26.530		
6,000.0	5,968.4	6,038.2	5,966.2	12.6	18.2	-68.72	-769.3	-284.0	672.3	646.6	25.63	26.230		
6,100.0	6,068.4	6,138.2	6,066.2	12.8	18.3	-68.70	-769.7	-284.7	672.4	646.5	25.93	25.935		
6,200.0	6,168.4	6,238.2	6,166.2	12.9	18.4	-68.67	-770.2	-285.5	672.5	646.3	26.22	25.646		
6,300.0	6,268.4	6,338.2	6,266.2	13.1	18.5	-68.65	-770.6	-286.2	672.6	646.1	26.52	25.362		
6,400.0	6,368.4	6,438.2	6,366.2	13.2	18.6	-68.62	-771.0	-287.0	672.7	645.9	26.82	25.083		
6,500.0	6,468.4	6,538.2	6,466.2	13.4	18.7	-68.60	-771.5	-287.7	672.9	645.7	27.12	24.809		
6,600.0	6,568.3	6,638.2	6,566.2	13.5	18.9	-68.57	-771.9	-288.5	673.0	645.5	27.42	24.540		
6,700.0	6,668.3	6,738.2	6,666.2	13.7	19.0	-68.55	-772.3	-289.3	673.1	645.4	27.73	24.276		
6,800.0	6,768.3	6,838.2	6,766.2	13.8	19.1	-68.52	-772.8	-290.0	673.2	645.2	28.03	24.017		
6,900.0	6,868.3	6,938.2	6,866.2	14.0	19.2	-68.49	-773.2	-290.8	673.3	645.0	28.34	23.762		
7,000.0	6,968.3	7,038.2	6,966.2	14.1	19.3	-68.47	-773.6	-291.5	673.4	644.8	28.64	23.512		
7,100.0	7,068.3	7,138.2	7,066.2	14.3	19.5	-68.44	-774.1	-292.3	673.5	644.6	28.95	23.267		
7,200.0	7,168.3	7,238.2	7,166.2	14.5	19.6	-68.42	-774.5	-293.0	673.7	644.4	29.26	23.026		
7,300.0	7,268.3	7,338.2	7,266.2	14.6	19.7	-68.39	-775.0	-293.8	673.8	644.2	29.57	22.789		
7,400.0	7,368.3	7,438.2	7,366.2	14.8	19.8	-68.37	-775.4	-294.5	673.9	644.0	29.88	22.557		
7,500.0	7,468.3	7,538.2	7,466.2	14.9	19.9	-68.34	-775.8	-295.3	674.0	643.8	30.19	22.328		
7,600.0	7,568.3	7,638.2	7,566.2	15.1	20.1	-68.32	-776.3	-296.0	674.1	643.6	30.50	22.104		
7,700.0	7,668.3	7,738.2	7,666.2	15.2	20.2	-68.29	-776.7	-296.8	674.2	643.4	30.81	21.884		
7,800.0	7,768.3	7,838.2	7,766.2	15.4	20.3	-68.27	-777.1	-297.6	674.4	643.2	31.12	21.667		
7,900.0	7,868.3	7,938.2	7,866.2	15.6	20.4	-68.24	-777.6	-298.3	674.5	643.0	31.44	21.455		
8,000.0	7,968.3	8,038.2	7,966.2	15.7	20.6	-68.22	-778.0	-299.1	674.6	642.8	31.75	21.246		
8,100.0	8,068.3	8,138.2	8,066.2	15.9	20.7	-68.19	-778.4	-299.8	674.7	642.7	32.07	21.040		
8,200.0	8,168.3	8,238.2	8,166.1	16.0	20.8	-68.16	-778.9	-300.6	674.8	642.5	32.38	20.839		
8,300.0	8,268.3	8,338.2	8,266.1	16.2	21.0	-68.14	-779.3	-301.3	675.0	642.3	32.70	20.640		
8,400.0	8,368.3	8,438.2	8,366.1	16.4	21.1	-68.11	-779.7	-302.1	675.1	642.1	33.02	20.446		
8,500.0	8,468.3	8,538.2	8,466.1	16.5	21.2	-68.09	-780.2	-302.8	675.2	641.9	33.34	20.254		
8,600.0	8,568.3	8,638.2	8,566.1	16.7	21.3	-68.06	-780.6	-303.6	675.3	641.7	33.65	20.066		
8,700.0	8,668.3	8,738.2	8,666.1	16.8	21.5	-68.04	-781.0	-304.3	675.4	641.5	33.97	19.881		
8,800.0	8,768.3	8,838.2	8,766.1	17.0	21.6	-68.01	-781.5	-305.1	675.5	641.3	34.29	19.699		
8,900.0	8,868.3	8,938.2	8,866.1	17.2	21.7	-67.99	-781.9	-305.9	675.7	641.0	34.61	19.520		
9,000.0	8,968.3	9,038.2	8,966.1	17.3	21.9	-67.96	-782.4	-306.6	675.8	640.8	34.94	19.344		
9,100.0	9,068.3	9,138.2	9,066.1	17.5	22.0	-67.94	-782.8	-307.4	675.9	640.6	35.26	19.171		
9,200.0	9,168.3	9,238.2	9,166.1	17.6	22.1	-67.91	-783.2	-308.1	676.0	640.4	35.58	19.001		
9,300.0	9,268.3	9,338.2	9,266.1	17.8	22.3	-67.89	-783.7	-308.9	676.1	640.2	35.90	18.833		
9,400.0	9,368.3	9,438.2	9,366.1	18.0	22.4	-67.86	-784.1	-309.6	676.3	640.0	36.22	18.669		
9,500.0	9,468.3	9,538.2	9,466.1	18.1	22.6	-67.84	-784.5	-310.4	676.4	639.8	36.55	18.507		
9,600.0	9,568.3	9,638.2	9,566.1	18.3	22.7	-67.81	-785.0	-311.1	676.5	639.6	36.87	18.347		
9,700.0	9,668.3	9,738.2	9,666.1	18.5	22.8	-67.79	-785.4	-311.9	676.6	639.4	37.20	18.190		
9,800.0	9,768.3	9,838.2	9,766.1	18.6	23.0	-67.76	-785.8	-312.6	676.7	639.2	37.52	18.036		
9,900.0	9,868.3	9,938.2	9,866.1	18.8	23.1	-67.74	-786.3	-313.4	676.9	639.0	37.85	17.884		
10,000.0	9,968.3	10,038.2	9,966.1	18.9	23.2	-67.71	-786.7	-314.2	677.0	638.8	38.17	17.735		
10,100.0	10,068.3	10,138.2	10,066.1	19.1	23.4	-67.69	-787.1	-314.9	677.1	638.6	38.50	17.588		
10,150.1	10,118.4	10,188.3	10,116.2	19.2	23.5	-67.67	-787.4	-315.3	677.2	638.5	38.66	17.515		

CC - Min centre to center distance or convergent point, SF - min separation factor, ES - min ellipse separation

Anticollision Report

Company:	Berry Petroleum Company (NAD 83)	Local Co-ordinate Reference:	Well Chevron 5-19D
Project:	Garfield County	TVD Reference:	WELL @ 8144.0ft (Original Well Elev)
Reference Site:	Chevron E05 696	MD Reference:	WELL @ 8144.0ft (Original Well Elev)
Site Error:	0.0ft	North Reference:	True
Reference Well:	Chevron 5-19D	Survey Calculation Method:	Minimum Curvature
Well Error:	0.0ft	Output errors are at	2.00 sigma
Reference Wellbore	DD	Database:	EDM 5000.1 US Multi Users DB
Reference Design:	Plan #1	Offset TVD Reference:	Offset Datum

Offset Design Chevron E05 696 - Chevron 5-17D - DD - Plan #1													Offset Site Error: 0.0 ft
Survey Program: 0-MWD													Offset Well Error: 0.0 ft
Reference		Offset		Semi Major Axis			Distance						Warning
Measured Depth (ft)	Vertical Depth (ft)	Measured Depth (ft)	Vertical Depth (ft)	Reference (ft)	Offset (ft)	Highside Toolface (°)	Offset Wellbore Centre +N/-S (ft)	+E/-W (ft)	Between Centres (ft)	Between Ellipses (ft)	Total Uncertainty Axis	Separation Factor	
10,200.0	10,168.3	10,219.1	10,147.0	19.3	23.5	-67.67	-787.5	-315.5	677.5	638.7	38.79	17.464 SF	
10,208.7	10,177.0	10,219.1	10,147.0	19.3	23.5	-67.67	-787.5	-315.5	677.8	639.0	38.81	17.465	

Anticollision Report

Company:	Berry Petroleum Company (NAD 83)	Local Co-ordinate Reference:	Well Chevron 5-19D
Project:	Garfield County	TVD Reference:	WELL @ 8144.0ft (Original Well Elev)
Reference Site:	Chevron E05 696	MD Reference:	WELL @ 8144.0ft (Original Well Elev)
Site Error:	0.0ft	North Reference:	True
Reference Well:	Chevron 5-19D	Survey Calculation Method:	Minimum Curvature
Well Error:	0.0ft	Output errors are at	2.00 sigma
Reference Wellbore	DD	Database:	EDM 5000.1 US Multi Users DB
Reference Design:	Plan #1	Offset TVD Reference:	Offset Datum

Offset Design Chevron E05 696 - Chevron 5-18D - DD - Plan #1													Offset Site Error:	0.0 ft
Survey Program: 0-MWD													Offset Well Error:	0.0 ft
Reference		Offset		Semi Major Axis			Distance				Total Uncertainty Axis	Separation Factor	Warning	
Measured Depth (ft)	Vertical Depth (ft)	Measured Depth (ft)	Vertical Depth (ft)	Reference (ft)	Offset (ft)	Highside Toolface (°)	Offset Wellbore Centre +N/-S (ft)	+E/-W (ft)	Between Centres (ft)	Between Ellipses (ft)				
0.0	0.0	0.0	0.0	0.0	0.0	74.57	8.0	29.0	30.1					
100.0	100.0	100.0	100.0	0.1	0.1	74.57	8.0	29.0	30.1	29.8	0.28	107.884		
200.0	200.0	200.0	200.0	0.3	0.3	74.57	8.0	29.0	30.1	29.5	0.63	47.949 CC		
300.0	300.0	300.9	300.9	0.5	0.5	-179.10	6.7	27.8	30.4	29.4	0.98	31.006 ES		
400.0	399.8	401.7	401.6	0.7	0.7	-173.94	2.9	24.2	31.3	30.0	1.34	23.395		
500.0	499.5	502.5	501.9	0.9	0.9	-166.11	-3.6	18.1	33.4	31.6	1.72	19.373		
600.0	598.7	603.0	601.7	1.2	1.2	-156.87	-12.6	9.6	37.1	35.0	2.17	17.104		
700.0	697.5	703.3	700.8	1.5	1.5	-147.68	-24.0	-1.2	43.1	40.3	2.73	15.769		
800.0	795.9	802.9	798.8	1.8	1.8	-140.50	-36.7	-13.2	50.8	47.5	3.36	15.127		
900.0	894.3	902.4	896.7	2.2	2.2	-135.29	-49.4	-25.2	59.2	55.2	4.02	14.717		
1,000.0	992.7	1,001.9	994.7	2.5	2.5	-131.39	-62.0	-37.1	67.9	63.2	4.70	14.452		
1,100.0	1,091.2	1,101.5	1,092.7	2.9	2.9	-128.38	-74.7	-49.1	76.9	71.5	5.38	14.279		
1,200.0	1,189.6	1,201.0	1,190.7	3.2	3.2	-126.01	-87.4	-61.1	86.0	79.9	6.07	14.163		
1,300.0	1,288.0	1,300.5	1,288.7	3.6	3.6	-124.09	-100.0	-73.0	95.2	88.5	6.76	14.084		
1,400.0	1,386.4	1,400.0	1,386.7	3.9	3.9	-122.52	-112.7	-85.0	104.6	97.1	7.45	14.030		
1,500.0	1,484.8	1,499.6	1,484.7	4.3	4.3	-121.20	-125.4	-97.0	114.0	105.8	8.14	13.993		
1,600.0	1,583.3	1,599.1	1,582.7	4.6	4.6	-120.09	-138.0	-108.9	123.4	114.6	8.84	13.966		
1,700.0	1,681.7	1,698.6	1,680.7	5.0	4.9	-119.13	-150.7	-120.9	132.9	123.4	9.53	13.948		
1,800.0	1,780.1	1,798.1	1,778.6	5.4	5.3	-118.30	-163.4	-132.8	142.4	132.2	10.22	13.936		
1,900.0	1,878.5	1,897.7	1,876.6	5.7	5.6	-117.58	-176.0	-144.8	152.0	141.0	10.91	13.928		
2,000.0	1,977.0	1,997.2	1,974.6	6.1	6.0	-116.94	-188.7	-156.8	161.5	149.9	11.60	13.922		
2,100.0	2,075.4	2,096.7	2,072.6	6.4	6.4	-116.37	-201.4	-168.7	171.1	158.8	12.29	13.919		
2,200.0	2,173.8	2,196.2	2,170.6	6.8	6.7	-115.86	-214.0	-180.7	180.7	167.7	12.98	13.918		
2,300.0	2,272.2	2,295.8	2,268.6	7.1	7.1	-115.41	-226.7	-192.7	190.3	176.6	13.67	13.917		
2,400.0	2,370.7	2,395.3	2,366.6	7.5	7.4	-115.01	-239.4	-204.6	199.9	185.5	14.36	13.915		
2,500.0	2,469.5	2,494.9	2,464.6	7.8	7.8	-114.11	-252.0	-216.6	208.4	193.4	15.02	13.877		
2,600.0	2,568.9	2,594.4	2,562.6	8.0	8.1	-112.42	-264.7	-228.5	215.6	200.0	15.64	13.788		
2,700.0	2,668.5	2,693.7	2,660.4	8.2	8.5	-110.00	-277.3	-240.5	221.9	205.6	16.21	13.686		
2,800.0	2,768.4	2,792.7	2,757.9	8.4	8.8	-106.89	-289.9	-252.4	227.5	210.8	16.71	13.610		
2,900.0	2,868.4	2,891.3	2,855.0	8.5	9.2	-87.59	-302.5	-264.2	233.0	215.9	17.13	13.602		
3,000.0	2,968.4	2,989.8	2,951.9	8.6	9.5	-83.73	-315.0	-276.1	239.3	221.8	17.49	13.682		
3,100.0	3,068.4	3,088.4	3,049.0	8.7	9.8	-80.14	-327.6	-287.9	246.6	228.8	17.80	13.855		
3,200.0	3,168.4	3,186.9	3,146.0	8.8	10.2	-76.77	-340.1	-299.8	254.8	236.8	18.07	14.106		
3,300.0	3,268.4	3,285.5	3,243.0	8.9	10.5	-73.62	-352.7	-311.6	263.9	245.6	18.30	14.423		
3,400.0	3,368.4	3,384.0	3,340.0	9.0	10.9	-70.68	-365.2	-323.5	273.7	255.2	18.50	14.795		
3,500.0	3,468.4	3,482.6	3,437.1	9.2	11.2	-67.95	-377.7	-335.3	284.2	265.5	18.68	15.212		
3,600.0	3,568.4	3,581.1	3,534.1	9.3	11.6	-65.41	-390.3	-347.2	295.3	276.5	18.85	15.664		
3,700.0	3,668.4	3,679.7	3,631.1	9.4	11.9	-63.06	-402.8	-359.0	307.0	288.0	19.02	16.143		
3,800.0	3,768.4	3,780.8	3,730.8	9.5	12.3	-60.85	-415.6	-371.0	319.0	299.8	19.17	16.640		
3,900.0	3,868.4	3,888.8	3,837.6	9.7	12.6	-59.03	-427.0	-381.8	329.3	310.0	19.33	17.036		
4,000.0	3,968.4	3,997.7	3,945.9	9.8	12.8	-57.76	-435.5	-389.9	337.1	317.5	19.52	17.268		
4,100.0	4,068.4	4,107.4	4,055.2	9.9	13.0	-57.01	-441.0	-395.1	342.0	322.3	19.74	17.330		
4,200.0	4,168.4	4,217.4	4,165.2	10.1	13.2	-56.72	-443.5	-397.5	344.1	324.1	19.98	17.220		
4,300.0	4,268.4	4,320.0	4,267.8	10.2	13.3	-56.76	-443.7	-397.7	344.0	323.8	20.26	16.983		
4,359.2	4,327.6	4,378.7	4,326.5	10.3	13.3	-56.77	-443.9	-397.9	344.0	323.6	20.42	16.847		
4,400.0	4,368.4	4,419.3	4,367.1	10.3	13.4	-56.77	-444.0	-398.1	344.0	323.5	20.53	16.757		
4,500.0	4,468.4	4,519.3	4,467.1	10.5	13.5	-56.75	-444.3	-398.7	344.1	323.3	20.80	16.542		
4,600.0	4,568.4	4,619.3	4,567.1	10.6	13.6	-56.73	-444.7	-399.3	344.1	323.1	21.07	16.330		
4,700.0	4,668.4	4,719.3	4,667.1	10.7	13.7	-56.71	-445.0	-399.9	344.2	322.9	21.35	16.123		
4,800.0	4,768.4	4,819.3	4,767.1	10.9	13.8	-56.69	-445.3	-400.5	344.3	322.6	21.63	15.919		
4,900.0	4,868.4	4,919.3	4,867.1	11.0	13.9	-56.68	-445.7	-401.1	344.3	322.4	21.91	15.718		
5,000.0	4,968.4	5,019.3	4,967.1	11.2	14.1	-56.66	-446.0	-401.7	344.4	322.2	22.19	15.522		

CC - Min centre to center distance or convergent point, SF - min separation factor, ES - min ellipse separation

Anticollision Report

Company:	Berry Petroleum Company (NAD 83)	Local Co-ordinate Reference:	Well Chevron 5-19D
Project:	Garfield County	TVD Reference:	WELL @ 8144.0ft (Original Well Elev)
Reference Site:	Chevron E05 696	MD Reference:	WELL @ 8144.0ft (Original Well Elev)
Site Error:	0.0ft	North Reference:	True
Reference Well:	Chevron 5-19D	Survey Calculation Method:	Minimum Curvature
Well Error:	0.0ft	Output errors are at	2.00 sigma
Reference Wellbore	DD	Database:	EDM 5000.1 US Multi Users DB
Reference Design:	Plan #1	Offset TVD Reference:	Offset Datum

Offset Design Chevron E05 696 - Chevron 5-18D - DD - Plan #1													Offset Site Error:	0.0 ft
Survey Program: 0-MWD													Offset Well Error:	0.0 ft
Reference		Offset		Semi Major Axis			Distance				Total Uncertainty Axis	Separation Factor	Warning	
Measured Depth (ft)	Vertical Depth (ft)	Measured Depth (ft)	Vertical Depth (ft)	Reference (ft)	Offset (ft)	Highside Toolface (°)	Offset Wellbore Centre +N/-S (ft)	+E/-W (ft)	Between Centres (ft)	Between Ellipses (ft)				
5,100.0	5,068.4	5,119.3	5,067.1	11.3	14.2	-56.64	-446.4	-402.3	344.5	322.0	22.47	15.329		
5,200.0	5,168.4	5,219.3	5,167.1	11.4	14.3	-56.62	-446.7	-402.8	344.6	321.8	22.76	15.139		
5,300.0	5,268.4	5,319.3	5,267.1	11.6	14.4	-56.60	-447.0	-403.4	344.6	321.6	23.05	14.953		
5,400.0	5,368.4	5,419.3	5,367.1	11.7	14.5	-56.59	-447.4	-404.0	344.7	321.4	23.34	14.771		
5,500.0	5,468.4	5,519.3	5,467.1	11.9	14.7	-56.57	-447.7	-404.6	344.8	321.1	23.63	14.592		
5,600.0	5,568.4	5,619.3	5,567.1	12.0	14.8	-56.55	-448.1	-405.2	344.8	320.9	23.92	14.417		
5,700.0	5,668.4	5,719.3	5,667.1	12.2	14.9	-56.53	-448.4	-405.8	344.9	320.7	24.21	14.245		
5,800.0	5,768.4	5,819.3	5,767.1	12.3	15.0	-56.51	-448.7	-406.4	345.0	320.5	24.51	14.076		
5,900.0	5,868.4	5,919.3	5,867.1	12.5	15.2	-56.50	-449.1	-407.0	345.0	320.2	24.81	13.910		
6,000.0	5,968.4	6,019.3	5,967.1	12.6	15.3	-56.48	-449.4	-407.6	345.1	320.0	25.10	13.748		
6,100.0	6,068.4	6,119.3	6,067.1	12.8	15.4	-56.46	-449.8	-408.1	345.2	319.8	25.40	13.589		
6,200.0	6,168.4	6,219.3	6,167.1	12.9	15.5	-56.44	-450.1	-408.7	345.3	319.6	25.70	13.433		
6,300.0	6,268.4	6,319.3	6,267.1	13.1	15.7	-56.42	-450.4	-409.3	345.3	319.3	26.01	13.279		
6,400.0	6,368.4	6,419.3	6,367.1	13.2	15.8	-56.41	-450.8	-409.9	345.4	319.1	26.31	13.129		
6,500.0	6,468.4	6,519.3	6,467.1	13.4	15.9	-56.39	-451.1	-410.5	345.5	318.9	26.61	12.982		
6,600.0	6,568.3	6,619.3	6,567.1	13.5	16.1	-56.37	-451.5	-411.1	345.5	318.6	26.92	12.837		
6,700.0	6,668.3	6,719.3	6,667.0	13.7	16.2	-56.35	-451.8	-411.7	345.6	318.4	27.22	12.695		
6,800.0	6,768.3	6,819.3	6,767.0	13.8	16.3	-56.34	-452.1	-412.3	345.7	318.2	27.53	12.556		
6,900.0	6,868.3	6,919.3	6,867.0	14.0	16.5	-56.32	-452.5	-412.9	345.8	317.9	27.84	12.420		
7,000.0	6,968.3	7,019.3	6,967.0	14.1	16.6	-56.30	-452.8	-413.4	345.8	317.7	28.15	12.286		
7,100.0	7,068.3	7,119.3	7,067.0	14.3	16.7	-56.28	-453.2	-414.0	345.9	317.4	28.46	12.154		
7,200.0	7,168.3	7,219.3	7,167.0	14.5	16.9	-56.26	-453.5	-414.6	346.0	317.2	28.77	12.025		
7,300.0	7,268.3	7,319.3	7,267.0	14.6	17.0	-56.25	-453.8	-415.2	346.0	317.0	29.08	11.899		
7,400.0	7,368.3	7,419.3	7,367.0	14.8	17.2	-56.23	-454.2	-415.8	346.1	316.7	29.39	11.774		
7,500.0	7,468.3	7,519.3	7,467.0	14.9	17.3	-56.21	-454.5	-416.4	346.2	316.5	29.71	11.653		
7,600.0	7,568.3	7,619.3	7,567.0	15.1	17.4	-56.19	-454.9	-417.0	346.2	316.2	30.02	11.533		
7,700.0	7,668.3	7,719.3	7,667.0	15.2	17.6	-56.17	-455.2	-417.6	346.3	316.0	30.34	11.415		
7,800.0	7,768.3	7,819.3	7,767.0	15.4	17.7	-56.16	-455.5	-418.2	346.4	315.7	30.65	11.300		
7,900.0	7,868.3	7,919.3	7,867.0	15.6	17.9	-56.14	-455.9	-418.7	346.5	315.5	30.97	11.187		
8,000.0	7,968.3	8,019.3	7,967.0	15.7	18.0	-56.12	-456.2	-419.3	346.5	315.2	31.29	11.076		
8,100.0	8,068.3	8,119.3	8,067.0	15.9	18.1	-56.10	-456.6	-419.9	346.6	315.0	31.61	10.967		
8,200.0	8,168.3	8,219.3	8,167.0	16.0	18.3	-56.09	-456.9	-420.5	346.7	314.7	31.92	10.859		
8,300.0	8,268.3	8,319.3	8,267.0	16.2	18.4	-56.07	-457.2	-421.1	346.7	314.5	32.24	10.754		
8,400.0	8,368.3	8,419.3	8,367.0	16.4	18.6	-56.05	-457.6	-421.7	346.8	314.3	32.56	10.651		
8,500.0	8,468.3	8,519.3	8,467.0	16.5	18.7	-56.03	-457.9	-422.3	346.9	314.0	32.88	10.549		
8,600.0	8,568.3	8,619.3	8,567.0	16.7	18.9	-56.01	-458.3	-422.9	347.0	313.8	33.20	10.449		
8,700.0	8,668.3	8,719.3	8,667.0	16.8	19.0	-56.00	-458.6	-423.4	347.0	313.5	33.53	10.351		
8,800.0	8,768.3	8,819.3	8,767.0	17.0	19.2	-55.98	-458.9	-424.0	347.1	313.3	33.85	10.255		
8,900.0	8,868.3	8,919.3	8,867.0	17.2	19.3	-55.96	-459.3	-424.6	347.2	313.0	34.17	10.160		
9,000.0	8,968.3	9,019.3	8,967.0	17.3	19.4	-55.94	-459.6	-425.2	347.2	312.7	34.49	10.067		
9,100.0	9,068.3	9,119.3	9,067.0	17.5	19.6	-55.93	-460.0	-425.8	347.3	312.5	34.82	9.975		
9,200.0	9,168.3	9,219.3	9,167.0	17.6	19.7	-55.91	-460.3	-426.4	347.4	312.2	35.14	9.885		
9,300.0	9,268.3	9,319.3	9,267.0	17.8	19.9	-55.89	-460.6	-427.0	347.5	312.0	35.47	9.797		
9,400.0	9,368.3	9,419.3	9,367.0	18.0	20.0	-55.87	-461.0	-427.6	347.5	311.7	35.79	9.710		
9,500.0	9,468.3	9,519.3	9,467.0	18.1	20.2	-55.85	-461.3	-428.2	347.6	311.5	36.12	9.624		
9,600.0	9,568.3	9,619.3	9,567.0	18.3	20.3	-55.84	-461.7	-428.7	347.7	311.2	36.44	9.540		
9,700.0	9,668.3	9,719.3	9,667.0	18.5	20.5	-55.82	-462.0	-429.3	347.7	311.0	36.77	9.457		
9,800.0	9,768.3	9,819.3	9,767.0	18.6	20.6	-55.80	-462.3	-429.9	347.8	310.7	37.10	9.376		
9,900.0	9,868.3	9,919.3	9,867.0	18.8	20.8	-55.78	-462.7	-430.5	347.9	310.5	37.42	9.296		
10,000.0	9,968.3	10,019.3	9,967.0	18.9	20.9	-55.77	-463.0	-431.1	348.0	310.2	37.75	9.217		
10,100.0	10,068.3	10,119.3	10,067.0	19.1	21.1	-55.75	-463.4	-431.7	348.0	310.0	38.08	9.139		
10,156.5	10,124.8	10,175.8	10,123.5	19.2	21.2	-55.74	-463.5	-432.0	348.1	309.8	38.27	9.096		

CC - Min centre to center distance or convergent point, SF - min separation factor, ES - min ellipse separation

Anticollision Report

Company:	Berry Petroleum Company (NAD 83)	Local Co-ordinate Reference:	Well Chevron 5-19D
Project:	Garfield County	TVD Reference:	WELL @ 8144.0ft (Original Well Elev)
Reference Site:	Chevron E05 696	MD Reference:	WELL @ 8144.0ft (Original Well Elev)
Site Error:	0.0ft	North Reference:	True
Reference Well:	Chevron 5-19D	Survey Calculation Method:	Minimum Curvature
Well Error:	0.0ft	Output errors are at	2.00 sigma
Reference Wellbore	DD	Database:	EDM 5000.1 US Multi Users DB
Reference Design:	Plan #1	Offset TVD Reference:	Offset Datum

Offset Design Chevron E05 696 - Chevron 5-18D - DD - Plan #1													Offset Site Error: 0.0 ft
Survey Program: 0-MWD													Offset Well Error: 0.0 ft
Reference		Offset		Semi Major Axis			Distance						Warning
Measured Depth (ft)	Vertical Depth (ft)	Measured Depth (ft)	Vertical Depth (ft)	Reference (ft)	Offset (ft)	Highside Toolface (°)	Offset Wellbore Centre +N/-S (ft)	+E/-W (ft)	Between Centres (ft)	Between Ellipses (ft)	Total Uncertainty Axis	Separation Factor	
10,200.0	10,168.3	10,214.3	10,162.0	19.3	21.2	-55.73	-463.7	-432.3	348.1	309.7	38.40	9.066 SF	
10,208.7	10,177.0	10,214.3	10,162.0	19.3	21.2	-55.73	-463.7	-432.3	348.4	310.0	38.41	9.069	

Anticollision Report

Company:	Berry Petroleum Company (NAD 83)	Local Co-ordinate Reference:	Well Chevron 5-19D
Project:	Garfield County	TVD Reference:	WELL @ 8144.0ft (Original Well Elev)
Reference Site:	Chevron E05 696	MD Reference:	WELL @ 8144.0ft (Original Well Elev)
Site Error:	0.0ft	North Reference:	True
Reference Well:	Chevron 5-19D	Survey Calculation Method:	Minimum Curvature
Well Error:	0.0ft	Output errors are at	2.00 sigma
Reference Wellbore	DD	Database:	EDM 5000.1 US Multi Users DB
Reference Design:	Plan #1	Offset TVD Reference:	Offset Datum

Offset Design Chevron E05 696 - Chevron 5-20D - DD - Plan #1													Offset Site Error:	0.0 ft
Survey Program: 0-MWD													Offset Well Error:	0.0 ft
Reference		Offset		Semi Major Axis			Distance						Warning	
Measured Depth (ft)	Vertical Depth (ft)	Measured Depth (ft)	Vertical Depth (ft)	Reference (ft)	Offset (ft)	Highside Toolface (°)	Offset Wellbore Centre +N/-S (ft)	+E/-W (ft)	Between Centres (ft)	Between Ellipses (ft)	Total Uncertainty Axis	Separation Factor		
0.0	0.0	0.0	0.0	0.0	0.0	74.72	4.0	14.7	15.2					
100.0	100.0	100.0	100.0	0.1	0.1	74.72	4.0	14.7	15.2	14.9	0.28	54.429	CC, ES	
200.0	200.0	200.0	200.0	0.3	0.3	74.72	4.0	14.7	15.2	14.6	0.63	24.191		
300.0	300.0	300.4	300.4	0.5	0.5	175.10	4.8	13.1	15.7	14.7	0.98	15.991		
400.0	399.8	400.7	400.5	0.7	0.7	164.23	7.1	8.3	17.5	16.2	1.35	13.005		
500.0	499.5	500.8	500.3	0.9	0.9	151.06	10.9	0.5	21.6	19.8	1.76	12.261		
600.0	598.7	600.7	599.4	1.2	1.2	139.75	16.2	-10.5	28.5	26.2	2.26	12.595		
700.0	697.5	700.2	697.6	1.5	1.5	131.55	23.0	-24.5	38.2	35.4	2.87	13.344		
800.0	795.9	799.4	795.3	1.8	1.8	126.08	30.8	-40.5	49.8	46.3	3.51	14.176		
900.0	894.3	898.7	892.9	2.2	2.2	122.66	38.6	-56.6	61.6	57.5	4.17	14.770		
1,000.0	992.7	997.9	990.5	2.5	2.5	120.35	46.3	-72.6	73.6	68.8	4.84	15.210		
1,100.0	1,091.2	1,097.2	1,088.2	2.9	2.9	118.69	54.1	-88.7	85.7	80.2	5.51	15.548		
1,200.0	1,189.6	1,196.4	1,185.8	3.2	3.2	117.44	61.9	-104.7	97.9	91.7	6.19	15.814		
1,300.0	1,288.0	1,295.6	1,283.4	3.6	3.6	116.47	69.7	-120.7	110.0	103.2	6.86	16.029		
1,400.0	1,386.4	1,394.9	1,381.0	3.9	3.9	115.69	77.5	-136.8	122.2	114.7	7.54	16.206		
1,500.0	1,484.8	1,494.1	1,478.7	4.3	4.3	115.05	85.3	-152.8	134.4	126.2	8.22	16.354		
1,600.0	1,583.3	1,593.4	1,576.3	4.6	4.7	114.51	93.0	-168.9	146.7	137.8	8.90	16.480		
1,700.0	1,681.7	1,692.6	1,673.9	5.0	5.0	114.06	100.8	-184.9	158.9	149.3	9.58	16.588		
1,800.0	1,780.1	1,791.8	1,771.5	5.4	5.4	113.68	108.6	-201.0	171.2	160.9	10.26	16.682		
1,900.0	1,878.5	1,891.1	1,869.2	5.7	5.7	113.34	116.4	-217.0	183.4	172.5	10.94	16.764		
2,000.0	1,977.0	1,990.3	1,966.8	6.1	6.1	113.05	124.2	-233.1	195.7	184.0	11.62	16.836		
2,100.0	2,075.4	2,089.6	2,064.4	6.4	6.4	112.79	132.0	-249.1	207.9	195.6	12.30	16.901		
2,200.0	2,173.8	2,188.8	2,162.0	6.8	6.8	112.56	139.7	-265.2	220.2	207.2	12.98	16.958		
2,300.0	2,272.2	2,288.0	2,259.7	7.1	7.2	112.36	147.5	-281.2	232.5	218.8	13.67	17.010		
2,400.0	2,370.7	2,387.3	2,357.3	7.5	7.5	112.21	155.3	-297.2	244.7	230.3	14.35	17.055		
2,500.0	2,469.5	2,486.6	2,455.0	7.8	7.9	111.69	163.1	-313.3	256.0	241.0	14.98	17.087		
2,600.0	2,568.9	2,585.9	2,552.7	8.0	8.2	110.50	170.9	-329.3	266.1	250.5	15.56	17.094		
2,700.0	2,668.5	2,685.0	2,650.2	8.2	8.6	108.72	178.7	-345.4	275.2	259.1	16.09	17.103		
2,800.0	2,768.4	2,786.6	2,750.2	8.4	8.9	106.45	186.3	-361.1	283.3	266.7	16.53	17.142		
2,900.0	2,868.4	2,890.2	2,852.8	8.5	9.2	119.71	192.6	-374.1	289.5	272.7	16.85	17.180		
3,000.0	2,968.4	2,994.5	2,956.6	8.6	9.4	117.87	197.3	-383.8	294.4	277.3	17.13	17.183		
3,100.0	3,068.4	3,099.5	3,061.4	8.7	9.6	116.78	200.3	-390.1	297.8	280.5	17.38	17.132		
3,200.0	3,168.4	3,204.9	3,166.7	8.8	9.7	116.35	201.7	-392.9	299.6	281.9	17.62	17.005		
3,300.0	3,268.4	3,307.0	3,268.8	8.9	9.9	116.40	201.8	-393.2	299.9	282.0	17.85	16.798		
3,400.0	3,368.4	3,407.4	3,369.2	9.0	10.0	116.41	201.5	-393.6	299.9	281.8	18.09	16.576		
3,500.0	3,468.4	3,507.4	3,469.2	9.2	10.1	116.40	201.2	-394.1	299.9	281.5	18.33	16.356		
3,600.0	3,568.4	3,607.4	3,569.2	9.3	10.2	116.40	200.9	-394.6	299.9	281.3	18.58	16.139		
3,700.0	3,668.4	3,707.4	3,669.2	9.4	10.3	116.39	200.6	-395.1	299.8	281.0	18.83	15.925		
3,800.0	3,768.4	3,807.4	3,769.2	9.5	10.4	116.39	200.4	-395.6	299.8	280.8	19.08	15.713		
3,900.0	3,868.4	3,907.4	3,869.2	9.7	10.5	116.39	200.1	-396.1	299.8	280.5	19.34	15.505		
4,000.0	3,968.4	4,007.4	3,969.2	9.8	10.6	116.38	199.8	-396.6	299.8	280.2	19.60	15.300		
4,100.0	4,068.4	4,107.4	4,069.2	9.9	10.8	116.38	199.5	-397.1	299.8	279.9	19.86	15.098		
4,200.0	4,168.4	4,207.4	4,169.2	10.1	10.9	116.37	199.2	-397.6	299.8	279.7	20.12	14.899		
4,300.0	4,268.4	4,307.4	4,269.2	10.2	11.0	116.37	198.9	-398.1	299.8	279.4	20.39	14.704		
4,400.0	4,368.4	4,407.4	4,369.1	10.3	11.1	116.36	198.6	-398.6	299.8	279.1	20.66	14.512		
4,500.0	4,468.4	4,507.4	4,469.1	10.5	11.3	116.36	198.3	-399.1	299.8	278.8	20.93	14.323		
4,600.0	4,568.4	4,607.4	4,569.1	10.6	11.4	116.35	198.0	-399.6	299.7	278.5	21.20	14.138		
4,700.0	4,668.4	4,707.4	4,669.1	10.7	11.5	116.35	197.8	-400.1	299.7	278.3	21.48	13.956		
4,800.0	4,768.4	4,807.4	4,769.1	10.9	11.6	116.35	197.5	-400.6	299.7	278.0	21.76	13.777		
4,900.0	4,868.4	4,907.4	4,869.1	11.0	11.8	116.34	197.2	-401.1	299.7	277.7	22.04	13.601		
5,000.0	4,968.4	5,007.4	4,969.1	11.2	11.9	116.34	196.9	-401.6	299.7	277.4	22.32	13.429		
5,100.0	5,068.4	5,107.4	5,069.1	11.3	12.0	116.33	196.6	-402.1	299.7	277.1	22.60	13.260		

CC - Min centre to center distance or convergent point, SF - min separation factor, ES - min ellipse separation

Anticollision Report

Company:	Berry Petroleum Company (NAD 83)	Local Co-ordinate Reference:	Well Chevron 5-19D
Project:	Garfield County	TVD Reference:	WELL @ 8144.0ft (Original Well Elev)
Reference Site:	Chevron E05 696	MD Reference:	WELL @ 8144.0ft (Original Well Elev)
Site Error:	0.0ft	North Reference:	True
Reference Well:	Chevron 5-19D	Survey Calculation Method:	Minimum Curvature
Well Error:	0.0ft	Output errors are at	2.00 sigma
Reference Wellbore	DD	Database:	EDM 5000.1 US Multi Users DB
Reference Design:	Plan #1	Offset TVD Reference:	Offset Datum

Offset Design Chevron E05 696 - Chevron 5-20D - DD - Plan #1													Offset Site Error:	0.0 ft
Survey Program: 0-MWD													Offset Well Error:	0.0 ft
Reference		Offset		Semi Major Axis			Distance				Total Uncertainty Axis	Separation Factor	Warning	
Measured Depth (ft)	Vertical Depth (ft)	Measured Depth (ft)	Vertical Depth (ft)	Reference (ft)	Offset (ft)	Highside Toolface (°)	Offset Wellbore Centre +N/-S (ft)	+E/-W (ft)	Between Centres (ft)	Between Ellipses (ft)				
5,200.0	5,168.4	5,207.4	5,169.1	11.4	12.2	116.33	196.3	-402.6	299.7	276.8	22.89	13.094		
5,300.0	5,268.4	5,307.4	5,269.1	11.6	12.3	116.32	196.0	-403.1	299.7	276.5	23.17	12.931		
5,400.0	5,368.4	5,407.4	5,369.1	11.7	12.4	116.32	195.7	-403.6	299.7	276.2	23.46	12.771		
5,500.0	5,468.4	5,507.4	5,469.1	11.9	12.6	116.31	195.4	-404.1	299.6	275.9	23.75	12.615		
5,600.0	5,568.4	5,607.4	5,569.1	12.0	12.7	116.31	195.2	-404.6	299.6	275.6	24.05	12.461		
5,700.0	5,668.4	5,707.4	5,669.1	12.2	12.8	116.31	194.9	-405.1	299.6	275.3	24.34	12.310		
5,800.0	5,768.4	5,807.4	5,769.1	12.3	13.0	116.30	194.6	-405.6	299.6	275.0	24.64	12.162		
5,900.0	5,868.4	5,907.4	5,869.1	12.5	13.1	116.30	194.3	-406.1	299.6	274.7	24.93	12.017		
6,000.0	5,968.4	6,007.4	5,969.1	12.6	13.3	116.29	194.0	-406.6	299.6	274.4	25.23	11.874		
6,100.0	6,068.4	6,107.4	6,069.1	12.8	13.4	116.29	193.7	-407.1	299.6	274.0	25.53	11.735		
6,200.0	6,168.4	6,207.4	6,169.1	12.9	13.5	116.28	193.4	-407.6	299.6	273.7	25.83	11.598		
6,300.0	6,268.4	6,307.4	6,269.1	13.1	13.7	116.28	193.1	-408.1	299.6	273.4	26.13	11.463		
6,400.0	6,368.4	6,407.4	6,369.1	13.2	13.8	116.27	192.8	-408.6	299.5	273.1	26.43	11.332		
6,500.0	6,468.4	6,507.4	6,469.1	13.4	14.0	116.27	192.6	-409.1	299.5	272.8	26.74	11.202		
6,600.0	6,568.3	6,607.4	6,569.1	13.5	14.1	116.27	192.3	-409.6	299.5	272.5	27.04	11.075		
6,700.0	6,668.3	6,707.4	6,669.1	13.7	14.3	116.26	192.0	-410.1	299.5	272.2	27.35	10.951		
6,800.0	6,768.3	6,807.4	6,769.1	13.8	14.4	116.26	191.7	-410.6	299.5	271.8	27.66	10.829		
6,900.0	6,868.3	6,907.4	6,869.1	14.0	14.6	116.25	191.4	-411.1	299.5	271.5	27.97	10.709		
7,000.0	6,968.3	7,007.4	6,969.1	14.1	14.7	116.25	191.1	-411.6	299.5	271.2	28.28	10.592		
7,100.0	7,068.3	7,107.4	7,069.1	14.3	14.9	116.24	190.8	-412.1	299.5	270.9	28.59	10.476		
7,200.0	7,168.3	7,207.4	7,169.1	14.5	15.0	116.24	190.5	-412.6	299.5	270.6	28.90	10.363		
7,300.0	7,268.3	7,307.4	7,269.1	14.6	15.2	116.23	190.3	-413.1	299.4	270.2	29.21	10.252		
7,400.0	7,368.3	7,407.4	7,369.1	14.8	15.3	116.23	190.0	-413.6	299.4	269.9	29.52	10.143		
7,500.0	7,468.3	7,507.4	7,469.1	14.9	15.5	116.23	189.7	-414.1	299.4	269.6	29.83	10.036		
7,600.0	7,568.3	7,607.4	7,569.1	15.1	15.6	116.22	189.4	-414.6	299.4	269.3	30.15	9.931		
7,700.0	7,668.3	7,707.4	7,669.1	15.2	15.8	116.22	189.1	-415.1	299.4	268.9	30.46	9.828		
7,800.0	7,768.3	7,807.4	7,769.1	15.4	15.9	116.21	188.8	-415.6	299.4	268.6	30.78	9.727		
7,900.0	7,868.3	7,907.4	7,869.1	15.6	16.1	116.21	188.5	-416.1	299.4	268.3	31.10	9.627		
8,000.0	7,968.3	8,007.4	7,969.1	15.7	16.2	116.20	188.2	-416.6	299.4	268.0	31.41	9.530		
8,100.0	8,068.3	8,107.4	8,069.1	15.9	16.4	116.20	187.9	-417.1	299.4	267.6	31.73	9.434		
8,200.0	8,168.3	8,207.4	8,169.1	16.0	16.5	116.19	187.7	-417.6	299.3	267.3	32.05	9.340		
8,300.0	8,268.3	8,307.4	8,269.1	16.2	16.7	116.19	187.4	-418.1	299.3	267.0	32.37	9.247		
8,400.0	8,368.3	8,407.4	8,369.1	16.4	16.8	116.19	187.1	-418.6	299.3	266.6	32.69	9.156		
8,500.0	8,468.3	8,507.4	8,469.1	16.5	17.0	116.18	186.8	-419.1	299.3	266.3	33.01	9.067		
8,600.0	8,568.3	8,607.4	8,569.1	16.7	17.1	116.18	186.5	-419.6	299.3	266.0	33.33	8.980		
8,700.0	8,668.3	8,707.4	8,669.1	16.8	17.3	116.17	186.2	-420.1	299.3	265.6	33.65	8.893		
8,800.0	8,768.3	8,807.4	8,769.1	17.0	17.5	116.17	185.9	-420.6	299.3	265.3	33.98	8.809		
8,900.0	8,868.3	8,907.4	8,869.1	17.2	17.6	116.16	185.6	-421.1	299.3	265.0	34.30	8.725		
9,000.0	8,968.3	9,007.4	8,969.1	17.3	17.8	116.16	185.3	-421.5	299.3	264.6	34.62	8.644		
9,100.0	9,068.3	9,107.4	9,069.1	17.5	17.9	116.15	185.1	-422.0	299.2	264.3	34.95	8.563		
9,200.0	9,168.3	9,207.4	9,169.1	17.6	18.1	116.15	184.8	-422.5	299.2	264.0	35.27	8.484		
9,300.0	9,268.3	9,307.4	9,269.1	17.8	18.2	116.15	184.5	-423.0	299.2	263.6	35.59	8.407		
9,400.0	9,368.3	9,407.4	9,369.1	18.0	18.4	116.14	184.2	-423.5	299.2	263.3	35.92	8.330		
9,500.0	9,468.3	9,507.4	9,469.1	18.1	18.6	116.14	183.9	-424.0	299.2	263.0	36.24	8.255		
9,600.0	9,568.3	9,607.4	9,569.1	18.3	18.7	116.13	183.6	-424.5	299.2	262.6	36.57	8.181		
9,700.0	9,668.3	9,707.4	9,669.1	18.5	18.9	116.13	183.3	-425.0	299.2	262.3	36.90	8.108		
9,800.0	9,768.3	9,807.4	9,769.1	18.6	19.0	116.12	183.0	-425.5	299.2	261.9	37.22	8.037		
9,900.0	9,868.3	9,907.4	9,869.1	18.8	19.2	116.12	182.7	-426.0	299.2	261.6	37.55	7.966		
10,000.0	9,968.3	10,007.4	9,969.1	18.9	19.4	116.11	182.5	-426.5	299.1	261.3	37.88	7.897		
10,100.0	10,068.3	10,107.4	10,069.1	19.1	19.5	116.11	182.2	-427.0	299.1	260.9	38.21	7.829		
10,200.0	10,168.3	10,207.4	10,169.1	19.3	19.7	116.10	181.9	-427.5	299.1	260.6	38.54	7.762		
10,208.7	10,177.0	10,216.1	10,177.8	19.3	19.7	116.10	181.9	-427.6	299.1	260.6	38.56	7.756 SF		

CC - Min centre to center distance or convergent point, SF - min separation factor, ES - min ellipse separation

Anticollision Report

Company:	Berry Petroleum Company (NAD 83)	Local Co-ordinate Reference:	Well Chevron 5-19D
Project:	Garfield County	TVD Reference:	WELL @ 8144.0ft (Original Well Elev)
Reference Site:	Chevron E05 696	MD Reference:	WELL @ 8144.0ft (Original Well Elev)
Site Error:	0.0ft	North Reference:	True
Reference Well:	Chevron 5-19D	Survey Calculation Method:	Minimum Curvature
Well Error:	0.0ft	Output errors are at	2.00 sigma
Reference Wellbore	DD	Database:	EDM 5000.1 US Multi Users DB
Reference Design:	Plan #1	Offset TVD Reference:	Offset Datum

Anticollision Report

Company:	Berry Petroleum Company (NAD 83)	Local Co-ordinate Reference:	Well Chevron 5-19D
Project:	Garfield County	TVD Reference:	WELL @ 8144.0ft (Original Well Elev)
Reference Site:	Chevron E05 696	MD Reference:	WELL @ 8144.0ft (Original Well Elev)
Site Error:	0.0ft	North Reference:	True
Reference Well:	Chevron 5-19D	Survey Calculation Method:	Minimum Curvature
Well Error:	0.0ft	Output errors are at	2.00 sigma
Reference Wellbore	DD	Database:	EDM 5000.1 US Multi Users DB
Reference Design:	Plan #1	Offset TVD Reference:	Offset Datum

Offset Design Chevron E05 696 - Chevron 5-5D - DD - Plan #1													Offset Site Error:	0.0 ft
Survey Program: O-MWD													Offset Well Error:	0.0 ft
Reference		Offset		Semi Major Axis		Distance		Total		Separation		Warning		
Measured Depth (ft)	Vertical Depth (ft)	Measured Depth (ft)	Vertical Depth (ft)	Reference (ft)	Offset (ft)	Highside Toolface (°)	Offset Wellbore Centre +N/-S (ft)	+E/-W (ft)	Between Centres (ft)	Between Ellipses (ft)	Uncertainty Axis			
0.0	0.0	0.0	0.0	0.0	0.0	74.50	16.0	57.8	60.0					
100.0	100.0	100.0	100.0	0.1	0.1	74.50	16.0	57.8	60.0	59.7	0.28	214.795		
200.0	200.0	200.0	200.0	0.3	0.3	74.50	16.0	57.8	60.0	59.4	0.63	95.465 CC, ES		
300.0	300.0	291.5	290.6	0.5	0.5	-173.21	9.0	67.5	70.5	69.5	0.99	70.969		
400.0	399.8	389.1	386.4	0.7	0.9	-165.46	-1.5	82.0	89.8	88.4	1.39	64.766		
500.0	499.5	486.0	481.7	0.9	1.2	-160.98	-11.9	96.4	113.3	111.5	1.77	64.015		
600.0	598.7	582.1	576.2	1.2	1.5	-158.48	-22.2	110.7	140.3	138.2	2.15	65.153		
700.0	697.5	677.4	669.8	1.5	1.9	-157.16	-32.5	124.9	170.6	168.1	2.55	67.005		
800.0	795.9	772.0	762.9	1.8	2.2	-156.62	-42.7	138.9	202.8	199.8	2.95	68.621		
900.0	894.3	866.7	856.0	2.2	2.6	-156.25	-52.9	153.0	234.9	231.5	3.37	69.750		
1,000.0	992.7	961.4	949.1	2.5	2.9	-155.97	-63.1	167.1	267.1	263.3	3.78	70.588		
1,100.0	1,091.2	1,056.1	1,042.1	2.9	3.3	-155.75	-73.2	181.2	299.2	295.0	4.20	71.231		
1,200.0	1,189.6	1,150.8	1,135.2	3.2	3.6	-155.57	-83.4	195.3	331.4	326.8	4.62	71.739		
1,300.0	1,288.0	1,245.4	1,228.3	3.6	4.0	-155.43	-93.6	209.3	363.6	358.5	5.04	72.149		
1,400.0	1,386.4	1,340.1	1,321.4	3.9	4.3	-155.30	-103.8	223.4	395.7	390.3	5.46	72.486		
1,500.0	1,484.8	1,434.8	1,414.4	4.3	4.7	-155.20	-114.0	237.5	427.9	422.0	5.88	72.767		
1,600.0	1,583.3	1,529.5	1,507.5	4.6	5.0	-155.11	-124.2	251.6	460.1	453.8	6.30	73.006		
1,700.0	1,681.7	1,624.2	1,600.6	5.0	5.4	-155.03	-134.4	265.6	492.2	485.5	6.72	73.211		
1,800.0	1,780.1	1,718.9	1,693.7	5.4	5.7	-154.96	-144.6	279.7	524.4	517.3	7.15	73.388		
1,900.0	1,878.5	1,813.5	1,786.7	5.7	6.1	-154.90	-154.7	293.8	556.6	549.0	7.57	73.543		
2,000.0	1,977.0	1,908.2	1,879.8	6.1	6.4	-154.85	-164.9	307.9	588.8	580.8	7.99	73.680		
2,100.0	2,075.4	2,002.9	1,972.9	6.4	6.7	-154.80	-175.1	322.0	620.9	612.5	8.41	73.801		
2,200.0	2,173.8	2,097.6	2,065.9	6.8	7.1	-154.76	-185.3	336.0	653.1	644.3	8.84	73.909		
2,300.0	2,272.2	2,192.3	2,159.0	7.1	7.4	-154.72	-195.5	350.1	685.3	676.0	9.26	74.007		
2,400.0	2,370.7	2,287.0	2,252.1	7.5	7.8	-154.76	-205.7	364.2	717.4	707.7	9.69	74.003		
2,500.0	2,469.5	2,382.4	2,345.9	7.8	8.1	-154.90	-216.0	378.4	747.2	737.0	10.14	73.705		
2,600.0	2,568.9	2,478.7	2,440.6	8.0	8.5	-154.90	-226.3	392.7	774.0	763.4	10.56	73.274		
2,700.0	2,668.5	2,575.7	2,536.0	8.2	8.9	-154.78	-236.8	407.1	797.8	786.8	10.97	72.733		
2,800.0	2,768.4	2,673.4	2,632.0	8.4	9.2	-154.55	-247.3	421.6	818.5	807.1	11.35	72.099		
2,900.0	2,868.4	2,771.5	2,728.5	8.5	9.6	-138.64	-257.8	436.2	836.2	824.5	11.71	71.382		
3,000.0	2,968.4	2,869.8	2,825.1	8.6	9.9	-138.11	-268.4	450.9	853.2	841.2	12.07	70.684		
3,100.0	3,068.4	2,968.1	2,921.7	8.7	10.3	-137.64	-279.0	465.5	870.5	858.0	12.43	70.051		
3,200.0	3,168.4	3,066.3	3,018.2	8.8	10.7	-137.19	-289.5	480.1	887.7	875.0	12.78	69.466		
3,300.0	3,268.4	3,164.6	3,114.8	8.9	11.0	-136.76	-300.1	494.7	905.1	891.9	13.13	68.925		
3,400.0	3,368.4	3,262.8	3,211.4	9.0	11.4	-136.34	-310.7	509.3	922.5	909.0	13.48	68.423		
3,500.0	3,468.4	3,361.1	3,308.0	9.2	11.7	-135.94	-321.3	523.9	939.9	926.1	13.83	67.957		
3,600.0	3,568.4	3,459.4	3,404.6	9.3	12.1	-135.55	-331.8	538.5	957.4	943.2	14.18	67.522		
3,700.0	3,668.4	3,557.6	3,501.2	9.4	12.5	-135.18	-342.4	553.1	974.9	960.4	14.53	67.116		
3,800.0	3,768.4	3,655.9	3,597.8	9.5	12.8	-134.82	-353.0	567.7	992.4	977.6	14.87	66.736		
3,900.0	3,868.4	3,754.1	3,694.4	9.7	13.2	-134.47	-363.6	582.3	1,010.0	994.8	15.22	66.380		
4,000.0	3,968.4	3,852.4	3,791.0	9.8	13.5	-134.14	-374.1	597.0	1,027.7	1,012.1	15.56	66.045		
4,100.0	4,068.4	3,950.7	3,887.5	9.9	13.9	-133.81	-384.7	611.6	1,045.3	1,029.4	15.90	65.730		
4,200.0	4,168.4	4,048.9	3,984.1	10.1	14.3	-133.50	-395.3	626.2	1,063.0	1,046.8	16.25	65.432		
4,300.0	4,268.4	4,147.2	4,080.7	10.2	14.6	-133.20	-405.8	640.8	1,080.7	1,064.1	16.59	65.152		
4,400.0	4,368.4	4,245.4	4,177.3	10.3	15.0	-132.90	-416.4	655.4	1,098.5	1,081.6	16.93	64.886		
4,500.0	4,468.4	4,343.7	4,273.9	10.5	15.4	-132.62	-427.0	670.0	1,116.3	1,099.0	17.27	64.634		
4,600.0	4,568.4	4,442.0	4,370.5	10.6	15.7	-132.35	-437.6	684.6	1,134.1	1,116.5	17.61	64.395		
4,700.0	4,668.4	4,540.2	4,467.1	10.7	16.1	-132.08	-448.1	699.2	1,151.9	1,133.9	17.95	64.168		
4,800.0	4,768.4	4,638.5	4,563.7	10.9	16.4	-131.82	-458.7	713.8	1,169.7	1,151.4	18.29	63.952		
4,900.0	4,868.4	4,736.7	4,660.3	11.0	16.8	-131.57	-469.3	728.4	1,187.6	1,169.0	18.63	63.747		
5,000.0	4,968.4	4,835.0	4,756.9	11.2	17.2	-131.33	-479.8	743.1	1,205.5	1,186.5	18.97	63.550 SF		

CC - Min centre to center distance or convergent point, SF - min separation factor, ES - min ellipse separation

Anticollision Report

Company:	Berry Petroleum Company (NAD 83)	Local Co-ordinate Reference:	Well Chevron 5-19D
Project:	Garfield County	TVD Reference:	WELL @ 8144.0ft (Original Well Elev)
Reference Site:	Chevron E05 696	MD Reference:	WELL @ 8144.0ft (Original Well Elev)
Site Error:	0.0ft	North Reference:	True
Reference Well:	Chevron 5-19D	Survey Calculation Method:	Minimum Curvature
Well Error:	0.0ft	Output errors are at	2.00 sigma
Reference Wellbore	DD	Database:	EDM 5000.1 US Multi Users DB
Reference Design:	Plan #1	Offset TVD Reference:	Offset Datum

Offset Design Chevron E05 696 - Chevron 5-6D - DD - Plan #1													Offset Site Error:	0.0 ft
Survey Program: 0-MWD													Offset Well Error:	0.0 ft
Reference		Offset		Semi Major Axis			Distance							Warning
Measured Depth (ft)	Vertical Depth (ft)	Measured Depth (ft)	Vertical Depth (ft)	Reference (ft)	Offset (ft)	Highside Toolface (°)	Offset Wellbore Centre +N/-S (ft)	+E/-W (ft)	Between Centres (ft)	Between Ellipses (ft)	Total Uncertainty Axis	Separation Factor		
0.0	0.0	0.0	0.0	0.0	0.0	74.49	20.0	72.2	74.9					
100.0	100.0	100.0	100.0	0.1	0.1	74.49	20.0	72.2	74.9	74.6	0.28	268.251		
200.0	200.0	200.0	200.0	0.3	0.3	74.49	20.0	72.2	74.9	74.3	0.63	119.223 CC, ES		
300.0	300.0	298.0	298.0	0.5	0.5	179.90	19.2	73.7	77.9	76.9	0.98	79.874		
400.0	399.8	395.5	395.3	0.7	0.7	-177.85	16.9	78.1	87.0	85.6	1.33	65.541		
500.0	499.5	491.7	491.2	0.9	0.9	-174.98	13.0	85.3	102.2	100.5	1.68	60.714		
600.0	598.7	586.2	585.0	1.2	1.1	-172.16	7.8	95.1	123.7	121.7	2.05	60.503 SF		
700.0	697.5	678.4	676.2	1.5	1.4	-169.71	1.2	107.3	151.4	149.0	2.41	62.799		
800.0	795.9	772.1	768.4	1.8	1.7	-167.78	-6.4	121.6	183.1	180.4	2.79	65.603		
900.0	894.3	866.7	861.6	2.2	2.1	-166.40	-14.2	136.2	215.1	211.9	3.18	67.674		
1,000.0	992.7	961.4	954.8	2.5	2.4	-165.37	-22.0	150.7	247.1	243.6	3.57	69.272		
1,100.0	1,091.2	1,056.0	1,048.0	2.9	2.7	-164.58	-29.8	165.2	279.2	275.2	3.96	70.538		
1,200.0	1,189.6	1,150.7	1,141.3	3.2	3.0	-163.96	-37.6	179.8	311.3	307.0	4.35	71.562		
1,300.0	1,288.0	1,245.3	1,234.5	3.6	3.4	-163.45	-45.3	194.3	343.5	338.7	4.74	72.406		
1,400.0	1,386.4	1,340.0	1,327.7	3.9	3.7	-163.03	-53.1	208.8	375.6	370.5	5.14	73.112		
1,500.0	1,484.8	1,434.6	1,420.9	4.3	4.0	-162.67	-60.9	223.4	407.8	402.3	5.53	73.711		
1,600.0	1,583.3	1,529.3	1,514.1	4.6	4.4	-162.37	-68.7	237.9	440.0	434.1	5.93	74.226		
1,700.0	1,681.7	1,623.9	1,607.3	5.0	4.7	-162.10	-76.5	252.4	472.2	465.9	6.32	74.672		
1,800.0	1,780.1	1,718.6	1,700.5	5.4	5.0	-161.87	-84.3	267.0	504.4	497.7	6.72	75.062		
1,900.0	1,878.5	1,813.2	1,793.7	5.7	5.4	-161.67	-92.0	281.5	536.6	529.5	7.12	75.406		
2,000.0	1,977.0	1,907.9	1,886.9	6.1	5.7	-161.49	-99.8	296.0	568.9	561.3	7.51	75.712		
2,100.0	2,075.4	2,002.5	1,980.1	6.4	6.0	-161.34	-107.6	310.6	601.1	593.2	7.91	75.986		
2,200.0	2,173.8	2,097.2	2,073.3	6.8	6.4	-161.19	-115.4	325.1	633.3	625.0	8.31	76.232		
2,300.0	2,272.2	2,191.9	2,166.5	7.1	6.7	-161.06	-123.2	339.6	665.5	656.8	8.71	76.454		
2,400.0	2,370.7	2,286.5	2,259.8	7.5	7.0	-161.00	-131.0	354.2	697.7	688.5	9.11	76.565		
2,500.0	2,469.5	2,382.0	2,353.7	7.8	7.4	-161.03	-138.8	368.8	727.5	717.9	9.53	76.316		
2,600.0	2,568.9	2,478.3	2,448.6	8.0	7.7	-160.95	-146.7	383.6	754.1	744.1	9.94	75.865		
2,700.0	2,668.5	2,575.4	2,544.2	8.2	8.0	-160.78	-154.7	398.5	777.5	767.2	10.33	75.243		
2,800.0	2,768.4	2,673.2	2,640.5	8.4	8.4	-160.52	-162.7	413.6	797.8	787.1	10.71	74.474		
2,900.0	2,868.4	2,771.5	2,737.3	8.5	8.7	-144.62	-170.8	428.7	815.0	803.9	11.08	73.576		
3,000.0	2,968.4	2,869.9	2,834.2	8.6	9.1	-144.14	-178.9	443.8	831.3	819.9	11.44	72.684		
3,100.0	3,068.4	2,968.4	2,931.2	8.7	9.4	-143.71	-187.0	458.9	847.9	836.1	11.80	71.876		
3,200.0	3,168.4	3,066.8	3,028.1	8.8	9.8	-143.30	-195.1	474.0	864.6	852.4	12.15	71.129		
3,300.0	3,268.4	3,165.2	3,125.0	8.9	10.1	-142.91	-203.2	489.1	881.3	868.7	12.51	70.436		
3,400.0	3,368.4	3,263.6	3,221.9	9.0	10.5	-142.53	-211.3	504.2	898.0	885.1	12.87	69.792		
3,500.0	3,468.4	3,362.0	3,318.8	9.2	10.8	-142.16	-219.4	519.3	914.7	901.5	13.22	69.191		
3,600.0	3,568.4	3,460.5	3,415.7	9.3	11.2	-141.81	-227.5	534.5	931.5	918.0	13.57	68.630		
3,700.0	3,668.4	3,558.9	3,512.6	9.4	11.5	-141.47	-235.6	549.6	948.4	934.5	13.93	68.105		
3,800.0	3,768.4	3,657.3	3,609.6	9.5	11.9	-141.14	-243.7	564.7	965.2	951.0	14.28	67.613		
3,900.0	3,868.4	3,755.7	3,706.5	9.7	12.2	-140.83	-251.8	579.8	982.1	967.5	14.63	67.150		
4,000.0	3,968.4	3,854.1	3,803.4	9.8	12.6	-140.52	-259.8	594.9	999.1	984.1	14.98	66.714		
4,100.0	4,068.4	3,952.6	3,900.3	9.9	12.9	-140.22	-267.9	610.0	1,016.0	1,000.7	15.32	66.303		
4,200.0	4,168.4	4,051.0	3,997.2	10.1	13.2	-139.94	-276.0	625.1	1,033.0	1,017.3	15.67	65.915		
4,300.0	4,268.4	4,149.4	4,094.1	10.2	13.6	-139.66	-284.1	640.2	1,050.0	1,034.0	16.02	65.547		
4,400.0	4,368.4	4,247.8	4,191.0	10.3	13.9	-139.39	-292.2	655.4	1,067.0	1,050.6	16.37	65.199		
4,500.0	4,468.4	4,346.2	4,288.0	10.5	14.3	-139.13	-300.3	670.5	1,084.0	1,067.3	16.71	64.869		
4,600.0	4,568.4	4,444.7	4,384.9	10.6	14.6	-138.88	-308.4	685.6	1,101.1	1,084.0	17.06	64.555		
4,700.0	4,668.4	4,543.1	4,481.8	10.7	15.0	-138.64	-316.5	700.7	1,118.2	1,100.8	17.40	64.256		
4,800.0	4,768.4	4,641.5	4,578.7	10.9	15.3	-138.40	-324.6	715.8	1,135.3	1,117.5	17.75	63.971		
4,900.0	4,868.4	4,739.9	4,675.6	11.0	15.7	-138.17	-332.7	730.9	1,152.4	1,134.3	18.09	63.700		
5,000.0	4,968.4	4,838.3	4,772.5	11.2	16.0	-137.95	-340.8	746.0	1,169.6	1,151.1	18.44	63.441		
5,100.0	5,068.4	4,936.7	4,869.4	11.3	16.4	-137.73	-348.9	761.2	1,186.7	1,167.9	18.78	63.193		

CC - Min centre to center distance or convergent point, SF - min separation factor, ES - min ellipse separation

Anticollision Report

Company:	Berry Petroleum Company (NAD 83)	Local Co-ordinate Reference:	Well Chevron 5-19D
Project:	Garfield County	TVD Reference:	WELL @ 8144.0ft (Original Well Elev)
Reference Site:	Chevron E05 696	MD Reference:	WELL @ 8144.0ft (Original Well Elev)
Site Error:	0.0ft	North Reference:	True
Reference Well:	Chevron 5-19D	Survey Calculation Method:	Minimum Curvature
Well Error:	0.0ft	Output errors are at	2.00 sigma
Reference Wellbore	DD	Database:	EDM 5000.1 US Multi Users DB
Reference Design:	Plan #1	Offset TVD Reference:	Offset Datum

Offset Design Chevron E05 696 - Chevron 5-6D - DD - Plan #1													Offset Site Error: 0.0 ft
Survey Program: 0-MWD													Offset Well Error: 0.0 ft
Reference		Offset		Semi Major Axis			Distance						Warning
Measured Depth	Vertical Depth	Measured Depth	Vertical Depth	Reference	Offset	Highside Toolface	Offset Wellbore Centre +N/-S	+E/-W	Between Centres	Between Ellipses	Total Uncertainty Axis	Separation Factor	
(ft)	(ft)	(ft)	(ft)	(ft)	(ft)	(°)	(ft)	(ft)	(ft)	(ft)			
5,200.0	5,168.4	5,035.2	4,966.4	11.4	16.7	-137.52	-357.0	776.3	1,203.9	1,184.8	19.12	62.956	

Anticollision Report

Company:	Berry Petroleum Company (NAD 83)	Local Co-ordinate Reference:	Well Chevron 5-19D
Project:	Garfield County	TVD Reference:	WELL @ 8144.0ft (Original Well Elev)
Reference Site:	Chevron E05 696	MD Reference:	WELL @ 8144.0ft (Original Well Elev)
Site Error:	0.0ft	North Reference:	True
Reference Well:	Chevron 5-19D	Survey Calculation Method:	Minimum Curvature
Well Error:	0.0ft	Output errors are at	2.00 sigma
Reference Wellbore	DD	Database:	EDM 5000.1 US Multi Users DB
Reference Design:	Plan #1	Offset TVD Reference:	Offset Datum

Offset Design Chevron E05 696 - Chevron 5-7D - DD - Plan #1													Offset Site Error:	0.0 ft
Survey Program:		0-MWD											Offset Well Error:	0.0 ft
Reference		Offset		Semi Major Axis			Distance				Total Uncertainty Axis	Separation Factor	Warning	
Measured Depth (ft)	Vertical Depth (ft)	Measured Depth (ft)	Vertical Depth (ft)	Reference (ft)	Offset (ft)	Highside Toolface (°)	Offset Wellbore Centre +N/-S (ft)	+E/-W (ft)	Between Centres (ft)	Between Ellipses (ft)				
0.0	0.0	0.0	0.0	0.0	0.0	74.30	24.4	86.8	90.2					
100.0	100.0	100.0	100.0	0.1	0.1	74.30	24.4	86.8	90.2	89.9	0.28	323.030		
200.0	200.0	200.0	200.0	0.3	0.3	74.30	24.4	86.8	90.2	89.6	0.63	143.569	CC, ES	
300.0	300.0	297.1	297.1	0.5	0.5	179.26	24.2	88.5	93.5	92.5	0.97	96.148		
400.0	399.8	393.5	393.4	0.7	0.7	-179.62	23.5	93.3	103.4	102.1	1.32	78.544		
500.0	499.5	488.7	488.2	0.9	0.9	-178.17	22.4	101.2	119.9	118.2	1.66	72.259		
600.0	598.7	581.9	580.8	1.2	1.1	-176.70	20.8	112.0	142.9	140.9	2.00	71.489	SF	
700.0	697.5	672.7	670.6	1.5	1.4	-175.38	18.9	125.4	172.3	169.9	2.33	73.804		
800.0	795.9	765.0	761.5	1.8	1.7	-174.29	16.7	141.2	205.9	203.2	2.68	76.844		
900.0	894.3	859.1	854.1	2.2	2.0	-173.48	14.4	157.4	239.7	236.7	3.03	79.145		
1,000.0	992.7	953.1	946.7	2.5	2.4	-172.88	12.1	173.7	273.6	270.2	3.38	80.965		
1,100.0	1,091.2	1,047.2	1,039.3	2.9	2.7	-172.40	9.7	190.0	307.5	303.7	3.73	82.440		
1,200.0	1,189.6	1,141.2	1,131.9	3.2	3.0	-172.02	7.4	206.2	341.4	337.3	4.08	83.657		
1,300.0	1,288.0	1,235.3	1,224.5	3.6	3.3	-171.71	5.1	222.5	375.3	370.8	4.43	84.678		
1,400.0	1,386.4	1,329.4	1,317.1	3.9	3.7	-171.45	2.8	238.8	409.2	404.4	4.78	85.547		
1,500.0	1,484.8	1,423.4	1,409.8	4.3	4.0	-171.24	0.5	255.0	443.1	438.0	5.14	86.294		
1,600.0	1,583.3	1,517.5	1,502.4	4.6	4.3	-171.05	-1.8	271.3	477.1	471.6	5.49	86.944		
1,700.0	1,681.7	1,611.5	1,595.0	5.0	4.7	-170.88	-4.1	287.6	511.0	505.2	5.84	87.514		
1,800.0	1,780.1	1,705.6	1,687.6	5.4	5.0	-170.74	-6.4	303.9	544.9	538.7	6.19	88.018		
1,900.0	1,878.5	1,799.6	1,780.2	5.7	5.3	-170.61	-8.7	320.1	578.9	572.3	6.54	88.467		
2,000.0	1,977.0	1,893.7	1,872.8	6.1	5.7	-170.50	-11.1	336.4	612.8	605.9	6.90	88.869		
2,100.0	2,075.4	1,987.7	1,965.4	6.4	6.0	-170.40	-13.4	352.7	646.8	639.5	7.25	89.231		
2,200.0	2,173.8	2,081.8	2,058.0	6.8	6.3	-170.31	-15.7	368.9	680.7	673.1	7.60	89.559		
2,300.0	2,272.2	2,175.9	2,150.6	7.1	6.7	-170.23	-18.0	385.2	714.7	706.7	7.95	89.857		
2,400.0	2,370.7	2,270.0	2,243.3	7.5	7.0	-170.19	-20.3	401.5	748.5	740.2	8.32	90.016		
2,500.0	2,469.5	2,364.9	2,336.7	7.8	7.3	-170.20	-22.6	417.9	779.9	771.2	8.70	89.688		
2,600.0	2,568.9	2,460.8	2,431.2	8.0	7.7	-170.16	-25.0	434.5	808.1	799.0	9.07	89.083		
2,700.0	2,668.5	2,557.6	2,526.5	8.2	8.0	-170.07	-27.4	451.2	832.9	823.4	9.44	88.238		
2,800.0	2,768.4	2,655.3	2,622.7	8.4	8.4	-169.94	-29.8	468.1	854.4	844.6	9.80	87.183		
2,900.0	2,868.4	2,753.5	2,719.4	8.5	8.7	-154.21	-32.2	485.1	872.6	862.4	10.15	85.947		
3,000.0	2,968.4	2,851.9	2,816.3	8.6	9.0	-153.96	-34.6	502.1	889.9	879.4	10.50	84.730		
3,100.0	3,068.4	2,950.3	2,913.2	8.7	9.4	-153.74	-37.0	519.1	907.5	896.7	10.85	83.617		
3,200.0	3,168.4	3,048.7	3,010.1	8.8	9.7	-153.53	-39.4	536.2	925.1	913.9	11.20	82.578		
3,300.0	3,268.4	3,147.1	3,106.9	8.9	10.1	-153.33	-41.9	553.2	942.7	931.2	11.55	81.606		
3,400.0	3,368.4	3,245.5	3,203.8	9.0	10.4	-153.14	-44.3	570.2	960.3	948.4	11.90	80.694		
3,500.0	3,468.4	3,343.9	3,300.7	9.2	10.8	-152.95	-46.7	587.2	978.0	965.7	12.25	79.838		
3,600.0	3,568.4	3,442.3	3,397.6	9.3	11.1	-152.77	-49.1	604.2	995.6	983.0	12.60	79.032		
3,700.0	3,668.4	3,540.6	3,494.4	9.4	11.5	-152.60	-51.5	621.2	1,013.2	1,000.3	12.95	78.272		
3,800.0	3,768.4	3,639.0	3,591.3	9.5	11.8	-152.43	-54.0	638.2	1,030.9	1,017.6	13.29	77.555		
3,900.0	3,868.4	3,737.4	3,688.2	9.7	12.2	-152.27	-56.4	655.3	1,048.6	1,034.9	13.64	76.876		
4,000.0	3,968.4	3,835.8	3,785.0	9.8	12.5	-152.12	-58.8	672.3	1,066.2	1,052.2	13.99	76.232		
4,100.0	4,068.4	3,934.2	3,881.9	9.9	12.9	-151.96	-61.2	689.3	1,083.9	1,069.6	14.33	75.622		
4,200.0	4,168.4	4,032.6	3,978.8	10.1	13.2	-151.82	-63.6	706.3	1,101.6	1,086.9	14.68	75.041		
4,300.0	4,268.4	4,130.9	4,075.7	10.2	13.6	-151.68	-66.0	723.3	1,119.3	1,104.3	15.03	74.489		
4,400.0	4,368.4	4,229.3	4,172.5	10.3	13.9	-151.54	-68.5	740.3	1,137.0	1,121.6	15.37	73.964		
4,500.0	4,468.4	4,327.7	4,269.4	10.5	14.3	-151.40	-70.9	757.4	1,154.7	1,139.0	15.72	73.462		
4,600.0	4,568.4	4,426.1	4,366.3	10.6	14.6	-151.28	-73.3	774.4	1,172.4	1,156.3	16.06	72.983		
4,700.0	4,668.4	4,524.5	4,463.1	10.7	15.0	-151.15	-75.7	791.4	1,190.1	1,173.7	16.41	72.525		
4,800.0	4,768.4	4,622.9	4,560.0	10.9	15.3	-151.03	-78.1	808.4	1,207.8	1,191.1	16.76	72.087		

CC - Min centre to center distance or convergent point, SF - min separation factor, ES - min ellipse separation

Anticollision Report

Company:	Berry Petroleum Company (NAD 83)	Local Co-ordinate Reference:	Well Chevron 5-19D
Project:	Garfield County	TVD Reference:	WELL @ 8144.0ft (Original Well Elev)
Reference Site:	Chevron E05 696	MD Reference:	WELL @ 8144.0ft (Original Well Elev)
Site Error:	0.0ft	North Reference:	True
Reference Well:	Chevron 5-19D	Survey Calculation Method:	Minimum Curvature
Well Error:	0.0ft	Output errors are at	2.00 sigma
Reference Wellbore	DD	Database:	EDM 5000.1 US Multi Users DB
Reference Design:	Plan #1	Offset TVD Reference:	Offset Datum

Offset Design Chevron E05 696 - Chevron 5-8D - DD - Plan #1													Offset Site Error:	0.0 ft
Survey Program: 0-MWD													Offset Well Error:	0.0 ft
Reference		Offset		Semi Major Axis		Highside Toolface (°)	Distance		Total Uncertainty Axis	Separation Factor	Warning			
Measured Depth (ft)	Vertical Depth (ft)	Measured Depth (ft)	Vertical Depth (ft)	Reference (ft)	Offset (ft)		Offset Wellbore Centre +N/-S (ft)	+E/-W (ft)						
0.0	0.0	0.0	0.0	0.0	0.0	74.32	28.4	101.2	105.1					
100.0	100.0	100.0	100.0	0.1	0.1	74.32	28.4	101.2	105.1	104.9	0.28	376.490		
200.0	200.0	200.0	200.0	0.3	0.3	74.32	28.4	101.2	105.1	104.5	0.63	167.329 CC, ES		
300.0	300.0	296.4	296.3	0.5	0.5	178.92	28.8	102.8	108.6	107.6	0.97	111.839		
400.0	399.8	392.0	391.9	0.7	0.7	179.10	29.8	107.5	118.8	117.5	1.31	90.646		
500.0	499.5	486.4	485.9	0.9	0.9	179.33	31.5	115.2	135.8	134.1	1.65	82.486		
600.0	598.7	578.8	577.7	1.2	1.1	179.58	33.7	125.7	159.4	157.4	1.98	80.680		
700.0	697.5	668.7	666.6	1.5	1.4	179.80	36.6	138.6	189.4	187.1	2.30	82.461		
800.0	795.9	760.3	756.9	1.8	1.7	-180.00	39.9	154.0	223.7	221.1	2.63	85.198		
900.0	894.3	854.2	849.3	2.2	2.0	-179.85	43.4	170.0	258.3	255.4	2.96	87.273		
1,000.0	992.7	948.0	941.7	2.5	2.3	-179.73	46.9	186.0	292.9	289.6	3.29	88.932		
1,100.0	1,091.2	1,041.8	1,034.1	2.9	2.7	-179.64	50.4	202.0	327.5	323.9	3.63	90.289		
1,200.0	1,189.6	1,135.7	1,126.5	3.2	3.0	-179.57	53.9	218.0	362.1	358.1	3.96	91.419		
1,300.0	1,288.0	1,229.5	1,218.8	3.6	3.3	-179.51	57.3	234.0	396.7	392.4	4.29	92.375		
1,400.0	1,386.4	1,323.3	1,311.2	3.9	3.6	-179.46	60.8	250.0	431.2	426.6	4.63	93.195		
1,500.0	1,484.8	1,417.2	1,403.6	4.3	4.0	-179.41	64.3	266.0	465.8	460.9	4.96	93.905		
1,600.0	1,583.3	1,511.0	1,496.0	4.6	4.3	-179.37	67.8	282.0	500.4	495.1	5.29	94.526		
1,700.0	1,681.7	1,604.8	1,588.4	5.0	4.6	-179.34	71.3	298.0	535.0	529.4	5.63	95.075		
1,800.0	1,780.1	1,698.6	1,680.8	5.4	5.0	-179.31	74.8	314.0	569.6	563.6	5.96	95.562		
1,900.0	1,878.5	1,792.5	1,773.2	5.7	5.3	-179.29	78.3	329.9	604.2	597.9	6.29	95.998		
2,000.0	1,977.0	1,886.3	1,865.6	6.1	5.6	-179.27	81.7	345.9	638.7	632.1	6.63	96.390		
2,100.0	2,075.4	1,980.1	1,958.0	6.4	6.0	-179.25	85.2	361.9	673.3	666.4	6.96	96.745		
2,200.0	2,173.8	2,074.0	2,050.4	6.8	6.3	-179.23	88.7	377.9	707.9	700.6	7.29	97.068		
2,300.0	2,272.2	2,167.8	2,142.7	7.1	6.6	-179.21	92.2	393.9	742.5	734.9	7.63	97.363		
2,400.0	2,370.7	2,261.7	2,235.2	7.5	6.9	-179.20	95.7	409.9	776.9	769.0	7.97	97.511		
2,500.0	2,469.5	2,356.4	2,328.5	7.8	7.3	-179.19	99.2	426.1	809.0	800.6	8.33	97.111		
2,600.0	2,568.9	2,452.2	2,422.8	8.0	7.6	-179.18	102.8	442.4	837.7	829.0	8.69	96.393		
2,700.0	2,668.5	2,548.9	2,518.0	8.2	8.0	-179.17	106.4	458.9	863.0	853.9	9.05	95.397		
2,800.0	2,768.4	2,646.5	2,614.1	8.4	8.3	-179.15	110.0	475.5	884.9	875.5	9.40	94.155		
2,900.0	2,868.4	2,744.7	2,710.8	8.5	8.7	-163.58	113.6	492.2	903.5	893.8	9.75	92.702		
3,000.0	2,968.4	2,843.1	2,807.7	8.6	9.0	-163.55	117.3	509.0	921.2	911.1	10.09	91.282		
3,100.0	3,068.4	2,941.5	2,904.6	8.7	9.4	-163.53	120.9	525.8	939.2	928.8	10.44	89.980		
3,200.0	3,168.4	3,039.9	3,001.5	8.8	9.7	-163.52	124.6	542.5	957.2	946.4	10.78	88.761		
3,300.0	3,268.4	3,138.3	3,098.3	8.9	10.1	-163.51	128.2	559.3	975.1	964.0	11.13	87.618		
3,400.0	3,368.4	3,236.6	3,195.2	9.0	10.4	-163.49	131.9	576.1	993.1	981.6	11.47	86.544		
3,500.0	3,468.4	3,335.0	3,292.1	9.2	10.7	-163.48	135.5	592.8	1,011.0	999.2	11.82	85.533		
3,600.0	3,568.4	3,433.4	3,388.9	9.3	11.1	-163.47	139.2	609.6	1,029.0	1,016.8	12.17	84.580		
3,700.0	3,668.4	3,531.8	3,485.8	9.4	11.4	-163.45	142.9	626.4	1,046.9	1,034.4	12.51	83.680		
3,800.0	3,768.4	3,630.1	3,582.7	9.5	11.8	-163.44	146.5	643.1	1,064.9	1,052.0	12.86	82.828		
3,900.0	3,868.4	3,728.5	3,679.5	9.7	12.1	-163.43	150.2	659.9	1,082.9	1,069.7	13.20	82.021		
4,000.0	3,968.4	3,826.9	3,776.4	9.8	12.5	-163.42	153.8	676.7	1,100.8	1,087.3	13.55	81.255		
4,100.0	4,068.4	3,925.3	3,873.3	9.9	12.8	-163.41	157.5	693.4	1,118.8	1,104.9	13.89	80.528		
4,200.0	4,168.4	4,023.6	3,970.1	10.1	13.2	-163.40	161.1	710.2	1,136.7	1,122.5	14.24	79.836		
4,300.0	4,268.4	4,122.0	4,067.0	10.2	13.5	-163.39	164.8	727.0	1,154.7	1,140.1	14.58	79.176		
4,400.0	4,368.4	4,220.4	4,163.9	10.3	13.9	-163.38	168.4	743.7	1,172.7	1,157.7	14.93	78.548		
4,500.0	4,468.4	4,318.7	4,260.7	10.5	14.2	-163.37	172.1	760.5	1,190.6	1,175.3	15.27	77.948		
4,600.0	4,568.4	4,417.1	4,357.6	10.6	14.6	-163.36	175.7	777.3	1,208.6	1,193.0	15.62	77.374 SF		

CC - Min centre to center distance or convergent point, SF - min separation factor, ES - min ellipse separation

Anticollision Report

Company:	Berry Petroleum Company (NAD 83)	Local Co-ordinate Reference:	Well Chevron 5-19D
Project:	Garfield County	TVD Reference:	WELL @ 8144.0ft (Original Well Elev)
Reference Site:	Chevron E05 696	MD Reference:	WELL @ 8144.0ft (Original Well Elev)
Site Error:	0.0ft	North Reference:	True
Reference Well:	Chevron 5-19D	Survey Calculation Method:	Minimum Curvature
Well Error:	0.0ft	Output errors are at	2.00 sigma
Reference Wellbore	DD	Database:	EDM 5000.1 US Multi Users DB
Reference Design:	Plan #1	Offset TVD Reference:	Offset Datum

Reference Depths are relative to WELL @ 8144.0ft (Original Well Elev)

Offset Depths are relative to Offset Datum

Central Meridian is -105.500000 °

Coordinates are relative to: Chevron 5-19D

Coordinate System is US State Plane 1983, Colorado Central Zone

Grid Convergence at Surface is: -1.66°

