

WPX ENERGY ROCKY MOUNTAIN LLC-EBUS

GM 411-13

H&P 318

Post Job Summary

Cement Surface Casing

Date Prepared: 6/27/2014
Job Date: 6/14/2014

Submitted by: Tony Eschete - Cement Engineer

The Road to Excellence Starts with Safety

Sold To #: 300721	Ship To #: 3273422	Quote #:	Sales Order #: 0901431016
Customer: WPX ENERGY ROCKY MOUNTAIN LLC-EBUS		Customer Rep: RON TOWERS	
Well Name: C&C ENERGY	Well #: GM 411-13	API/UWI #: 05-045-22263-00	
Field: GRAND VALLEY	City (SAP): PARACHUTE	County/Parish: GARFIELD	State: COLORADO
Legal Description: SW SW-12-7S-96W-280FSL-994FWL			
Contractor:		Rig/Platform Name/Num: H&P 318	
Job BOM: 7521			
Well Type: DIRECTIONAL GAS			
Sales Person: HALAMERICA\HAM2616		Srcv Supervisor: Bill Jamison	
Job			

Formation Name	
Formation Depth (MD)	Top Bottom
Form Type	BHST
Job depth MD	1302ft Job Depth TVD
Water Depth	Wk Ht Above Floor 2
Perforation Depth (MD)	From To

20 BBLs OF CEMENT TO SURFACE

Well Data										
Description	New / Used	Size in	ID in	Weight lbm/ft	Thread	Grade	Top MD ft	Bottom MD ft	Top TVD ft	Bottom TVD ft
Casing		9.625	9.001	32.3		H-40	0	1302		0
Open Hole Section			13.5				0	1310	0	0

Tools and Accessories									
Type	Size in	Qty	Make	Depth ft	Type	Size in	Qty	Make	
Guide Shoe	9.625	1		1298	Top Plug	9.625	1	HES	
Float Shoe					Bottom Plug				
Float Collar					SSR plug set				
Insert Float					Plug Container				
Stage Tool					Centralizers				

Miscellaneous Materials									
Gelling Agt	Conc	Surfactant	Conc	Acid Type	Qty	Conc			
Treatment Fld	Conc	Inhibitor	Conc	Sand Type	Size	Qty			

Fluid Data									
Stage/Plug #: 1									
Fluid #	Stage Type	Fluid Name	Qty	Qty UoM	Mixing Density lbm/gal	Yield ft3/sack	Mix Fluid Gal	Rate bbl/min	Total Mix Fluid Gal
1	Fresh Water Spacer	Fresh Water Spacer	20	bbl	8.34			6	
Fluid #	Stage Type	Fluid Name	Qty	Qty UoM	Mixing Density lbm/gal	Yield ft3/sack	Mix Fluid Gal	Rate bbl/min	Total Mix Fluid Gal
2	Lead Cement	VARICEM (TM) CEMENT	175	sack	12.3	2.38		8	13.77

13.70 Gal		FRESH WATER							
Fluid #	Stage Type	Fluid Name	Qty	Qty UoM	Mixing Density lbm/gal	Yield ft³/sack	Mix Fluid Gal	Rate bbl/mi n	Total Mix Fluid Gal
3	Tail Cement	VARICEM (TM) CEMENT	165	sack	12.8	2.11		8	11.77
11.77 Gal		FRESH WATER							
Fluid #	Stage Type	Fluid Name	Qty	Qty UoM	Mixing Density lbm/gal	Yield ft³/sack	Mix Fluid Gal	Rate bbl/mi n	Total Mix Fluid Gal
4	Fresh Water Displacement	Fresh Water Displacement	99.7	bbl	8.34			10	
Cement Left In Pipe	Amount	34 ft			Reason	Shoe Joint			
Comment									

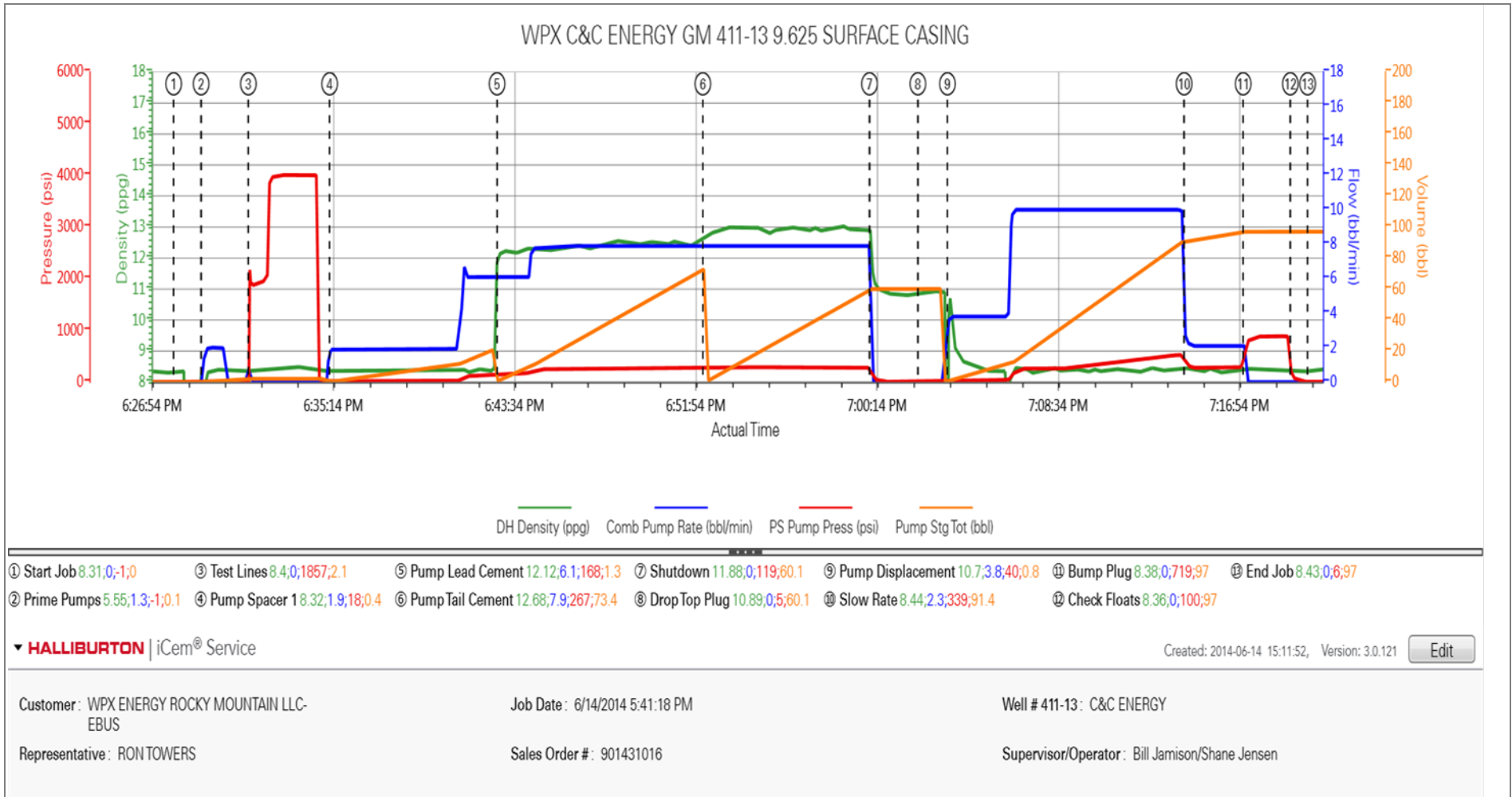
4.1 Job Event Log

Type	Seq. No.	Activity	Date	Time	Source	DH Density (ppg)	Comb Pump Rate (bbl/min)	PS Pump Press (psi)	Pump Stg Tot (bbl)	Comment
Event	1	Call Out	6/14/2014	09:00:00	USER					TD 1310 TP 1302 SJ 34 MUD 9.2 CASING 9.625 32.3 H-40 HOLE SIZE 13.5 SHOE SET @ 1298
Event	2	Depart Yard Safety Meeting	6/14/2014	12:20:00	USER					
Event	3	Crew Leave Yard	6/14/2014	12:30:00	USER					
Event	4	Arrive At Loc	6/14/2014	14:00:00	USER					
Event	5	Assessment Of Location Safety Meeting	6/14/2014	14:20:00	USER					
Event	6	Pre-Rig Up Safety Meeting	6/14/2014	17:00:00	USER					
Event	7	Pre-Job Safety Meeting	6/14/2014	18:20:00	USER					
Event	8	Start Job	6/14/2014	18:28:00	COM2					
Event	9	Prime Pumps	6/14/2014	18:29:15	COM2	8.4	2	26	2	FRESH WATER
Event	10	Test Lines	6/14/2014	18:31:26	COM2			4000		
Event	11	Pump Spacer 1	6/14/2014	18:35:10	COM2	8.4	6	140	20	FRESH WATER
Event	12	Pump Lead Cement	6/14/2014	18:42:52	COM2	12.3	8	266	74.2	175 SKS 12.3 YIELD 2.38 WAT/REQ 13.77
Event	13	Pump Tail Cement	6/14/2014	18:52:20	COM2	12.8	8	289	62	165 SKS 12.8 YIELD 2.11 WAT/REQ 11.77
Event	14	Shutdown	6/14/2014	19:00:00	USER					
Event	15	Drop Top Plug	6/14/2014	19:02:13	COM2					
Event	16	Pump Displacement	6/14/2014	19:03:34	COM2	8.4	10	534	90	FRESH WATER
Event	17	Slow Rate	6/14/2014	19:14:28	USER	8.4	2	286	10	
Event	18	Bump Plug	6/14/2014	19:17:10	COM2	8.4	2	286	99.7	PRESSURED UP TO 888 PSI
Event	19	Check Floats	6/14/2014	19:19:21	USER					FLOATS HELD
Event	20	End Job	6/14/2014	19:20:08	COM2					20 BBLS OF CEMENT TO SURFACE
Event	21	Post-Job Safety Meeting (Pre Rig-Down)	6/14/2014	19:30:00	USER					GOOD CIRCULATION THROUGHOUT JOB

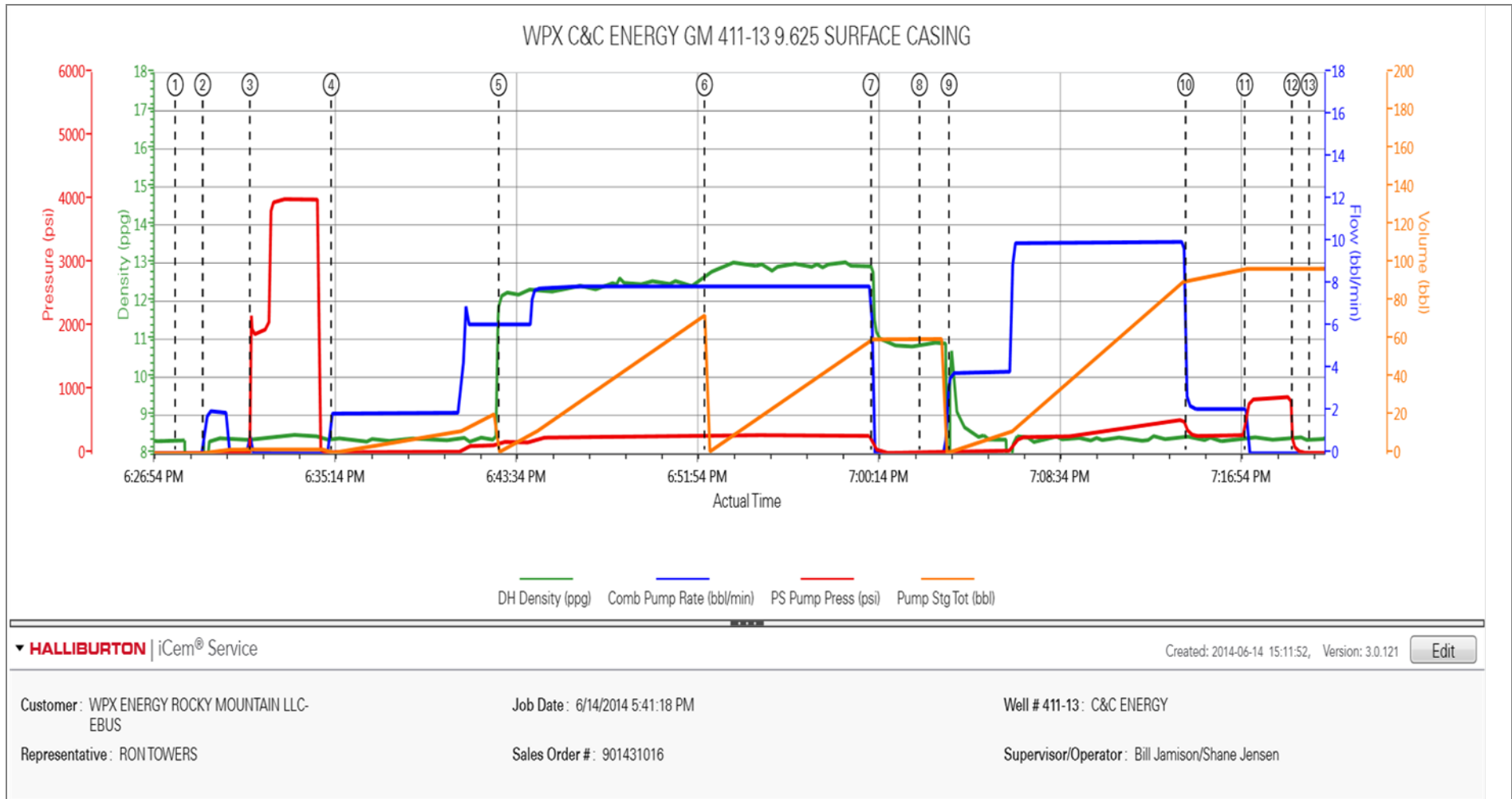
Event	22	Depart Location Safety Meeting	6/14/2014	20:20:00	USER	CASING WAS NOT MOVED THROUGHOUT JOB
Event	23	Crew Leave Location	6/14/2014	20:30:00	USER	THANKS FOR USING HALLIBURTON BILL JAMISON & CREW

5.0 Attachments

5.1 WPX C&C ENERGY GM 411-13 9.625 SURFACE CASING.png



5.2 WPX C&C ENERGY GM 411-13 9.625 SURFACE CASING.png



▼ HALLIBURTON | iCem® Service

Created: 2014-06-14 15:11:52, Version: 3.0.121

Edit

Customer: WPX ENERGY ROCKY MOUNTAIN LLC-EBUS

Job Date: 6/14/2014 5:41:18 PM

Well # 411-13: C&C ENERGY

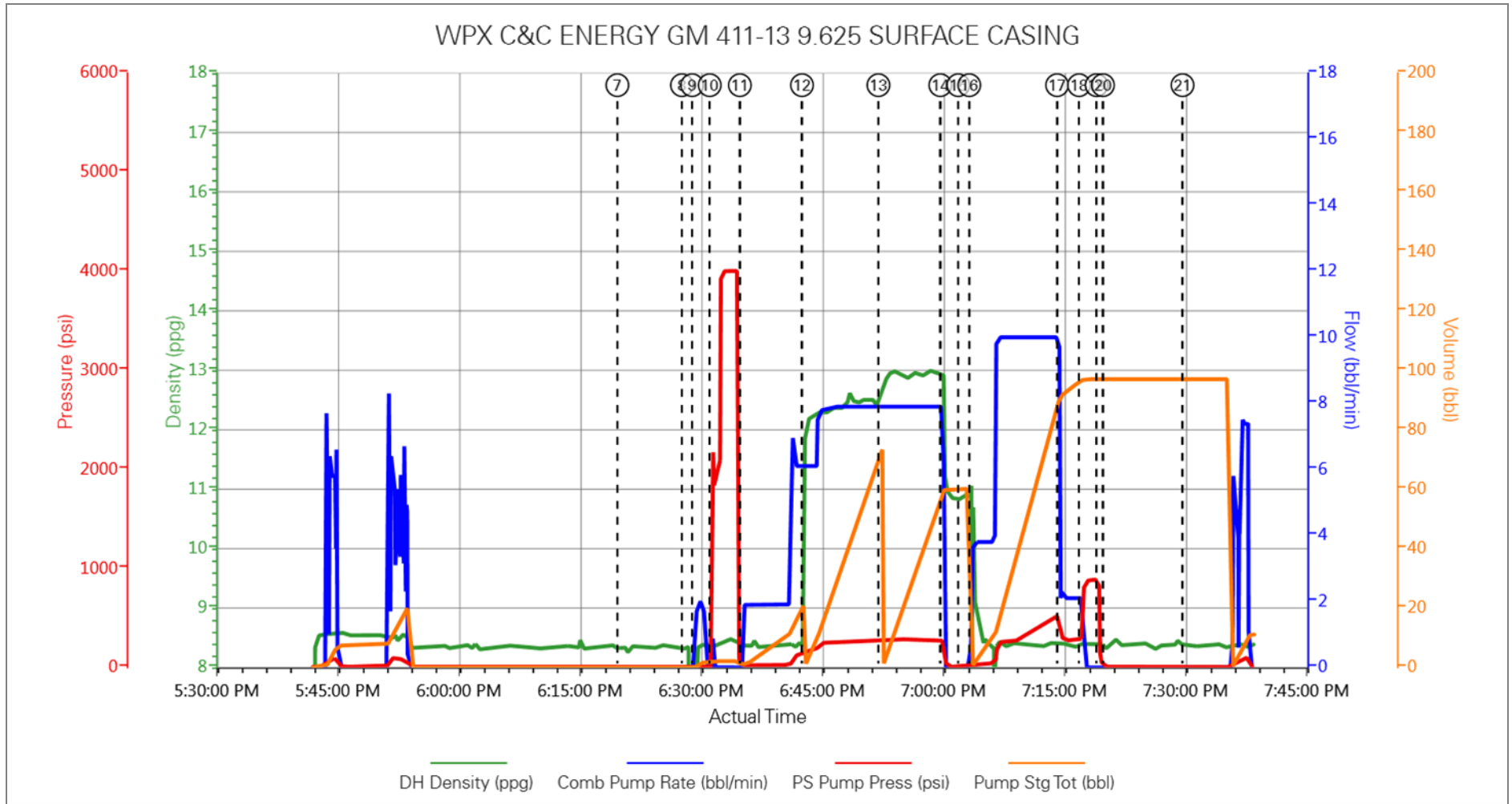
Representative: RON TOWERS

Sales Order #: 901431016

Supervisor/Operator: Bill Jamison/Shane Jensen

6.0 Custom Graphs

6.1 Custom Graph



Sales Order #: 0901431016	Line Item: 10	Survey Conducted Date: 6/14/2014
Customer: WPX ENERGY ROCKY MOUNTAIN LLC-EBUS		Job Type (BOM): CMT SURFACE CASING BOM
Customer Representative: RON TOWERS		API / UWI: (leave blank if unknown) 05-045-22263-00
Well Name: C&C ENERGY		Well Number: 0080358192
Well Type: DIRECTIONAL GAS	Well Country: USA	
H2S Present: No	Well State: COLORADO	Well County: GARFIELD

Dear Customer,

We hope that you were satisfied with the service quality of this job performed by Halliburton. It is the aim of our management and service personnel to deliver equipment and service of a standard unmatched in the service sector of the energy industry.

Please take the time to let us know if our performance met with your satisfaction. Please be as critical as possible to ensure we constantly improve our service. Your comments are of great value to us and are intended for the exclusive use of Halliburton.

CUSTOMER SATISFACTION SURVEY

CATEGORY	CUSTOMER SATISFACTION RESPONSE	
Survey Conducted Date	The date the survey was conducted	6/14/2014
Survey Interviewer	The survey interviewer is the person who initiated the survey.	HAL9235
Customer Participation	Did the customer participate in this survey? (Y/N)	Yes
Customer Representative	Enter the Customer representative name	RON TOWERS
HSE	Was our HSE performance satisfactory? Circle Y or N	Yes
Equipment	Were you satisfied with our Equipment? Circle Y or N	Yes
Personnel	Were you satisfied with our people? Circle Y or N	Yes
Customer Comment	Customer's Comment	NONE

CUSTOMER SIGNATURE

Sales Order #: 0901431016	Line Item: 10	Survey Conducted Date: 6/14/2014
Customer: WPX ENERGY ROCKY MOUNTAIN LLC-EBUS		Job Type (BOM): CMT SURFACE CASING BOM
Customer Representative: RON TOWERS		API / UWI: (leave blank if unknown) 05-045-22263-00
Well Name: C&C ENERGY		Well Number: 0080358192
Well Type: DIRECTIONAL GAS	Well Country: USA	
H2S Present: No	Well State: COLORADO	Well County: GARFIELD

KEY PERFORMANCE INDICATORS

General	
Survey Conducted Date	6/14/2014
The date the survey was conducted	

Cementing KPI Survey	
Type of Job	0
Select the type of job. (Cementing or Non-Cementing)	
Select the Maximum Deviation range for this Job	Vertical
What is the highest deviation for the job you just completed? This may not be the maximum well deviation.	
Total Operating Time (hours)	35
Total Operating Hours Including Rig-up, Pumping, Rig-down. Enter in decimal format.	
HSE Incident, Accident, Injury	No
HSE Incident, Accident, Injury. This should be recordable incidents only.	
Was the job purpose achieved?	Yes
Was the job delivered correctly as per customer agreed design?	
Operating Hours (Pumping Hours)	1
Total number of hours pumping fluid on this job. Enter in decimal format.	
Customer Non-Productive Rig Time (hrs)	0
Lost time due to Halliburton in the start, execution, or completion of an ordered service or product, or delays in a follow-on service. Enter in decimal format. 0 if none.	
Type of Rig Classification Job Was Performed	Drilling Rig (Portable)
Type Of Rig (classification) Job Was Performed On	
Number Of JSAs Performed	5
Number Of Jsas Performed	
Number of Unplanned Shutdowns	0
Unplanned shutdown is when injection stops for any period of time.	
Was this a Primary Cement Job (Yes / No)	Yes

Sales Order #: 0901431016	Line Item: 10	Survey Conducted Date: 6/14/2014
Customer: WPX ENERGY ROCKY MOUNTAIN LLC-EBUS		Job Type (BOM): CMT SURFACE CASING BOM
Customer Representative: RON TOWERS		API / UWI: (leave blank if unknown) 05-045-22263-00
Well Name: C&C ENERGY		Well Number: 0080358192
Well Type: DIRECTIONAL GAS	Well Country: USA	
H2S Present: No	Well State: COLORADO	Well County: GARFIELD

Primary Cement Job= Casing job, Liner job, or Tie-back job.	
Did We Run Wiper Plugs? Did We Run Top And Bottom Casing Wiper Plugs?	Top
Mixing Density of Job Stayed in Designed Density Range (0-100%) Density Range defined as +/- .20 ppg. Calculation: Total BBLs cement mixed at designed density divided by total BBLs of cement multiplied by 100	98
Was Automated Density Control Used? Was Automated Density Control (ADC) Used ?	Yes
Pump Rate (percent) of Job Stayed At Designed Pump Rate Pump Rate range defined as +/- 1bbl/min. Calculation: Total BBLs of fluid pumped at the designed rate divided by Total BBLs of fluid pumped, multiplied by 100	98
Nbr of Remedial Sqz Jobs Rqd - Competition Number Of Remedial Squeeze Jobs Required After Primary Job Performed By Competition	0
Nbr of Remedial Plug Jobs Rqd - HES Number Of Remedial Plug Jobs Needed After Primary Plug Pumped By HES	0
Nbr of Remedial Sqz Jobs Rqd - HES Number Of Remedial Squeeze Jobs Required After Primary Job Performed By HES	0