

OPERATOR: **WPX ENERGY**

WELL NAME: GM 411-13
FIELD NAME: GRAND VALLEY
DRILLING RIG: H&P 318
API #: 05-045-22263

LOCATION: SEC. 13 T 7 S R 96 W
SURFACE HOLE: 280' FSL , 994' FWL
BOTTOM HOLE: 898' FNL , 823' FWL
SCALE: 1" = 100'



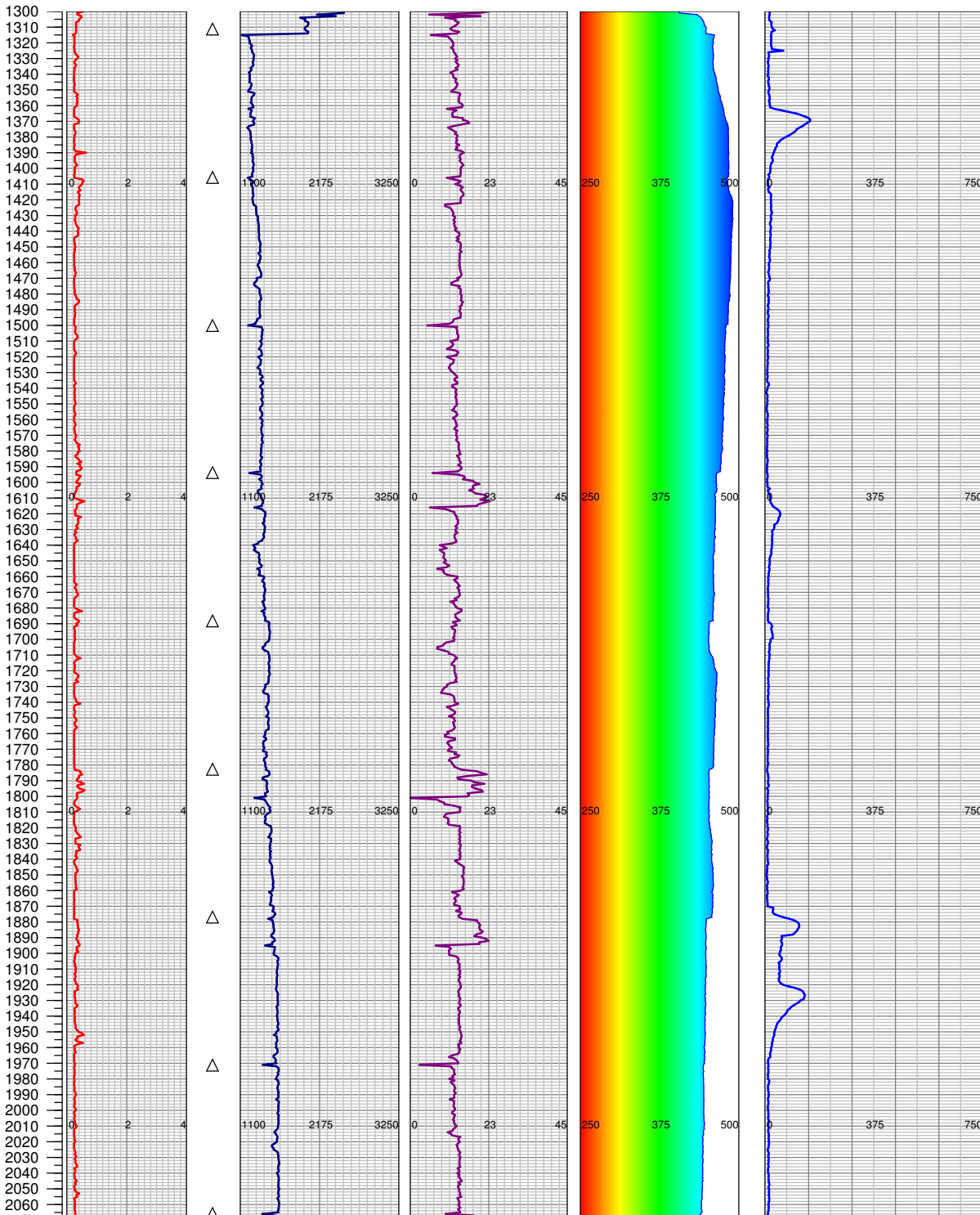
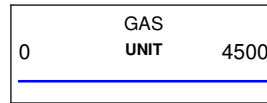
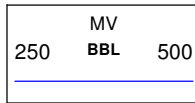
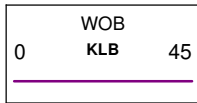
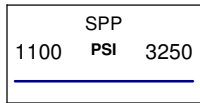
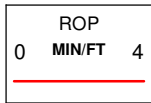
533 Bogart Lane, Unit A
Grand Junction, CO 81505
Office (970) 424-5162

GM 411-13

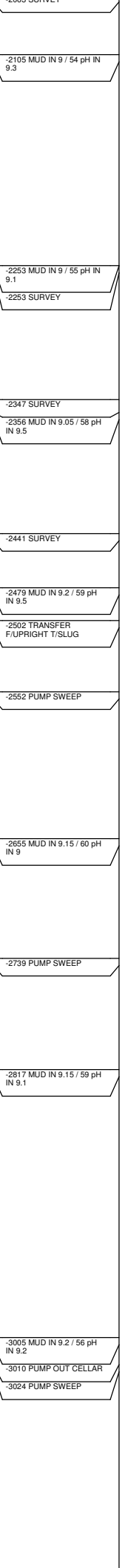
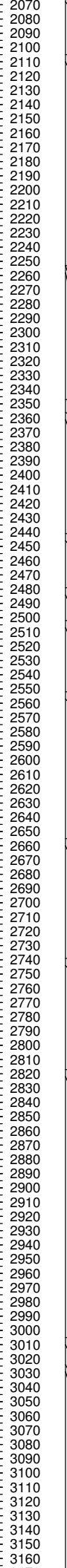
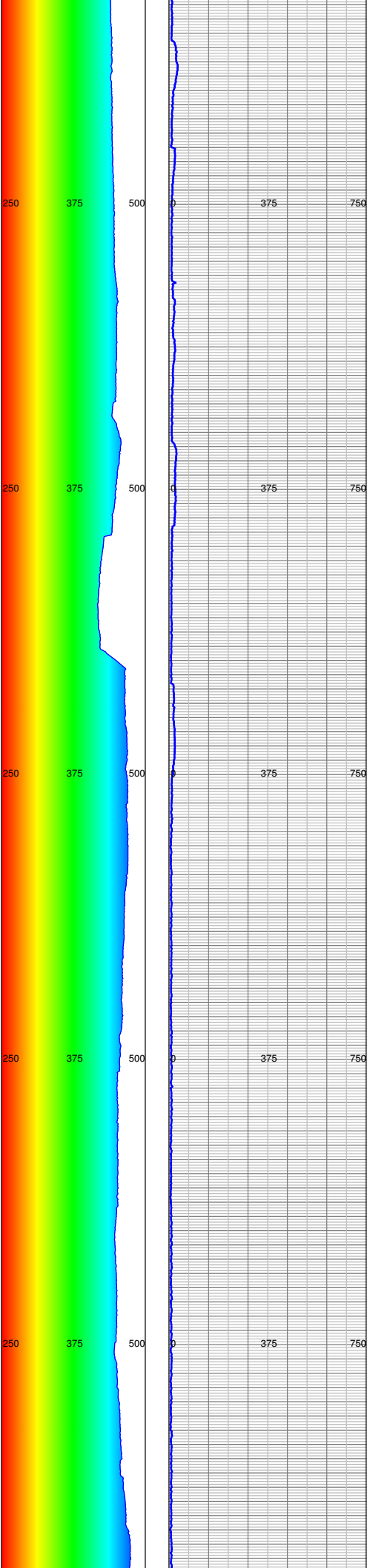
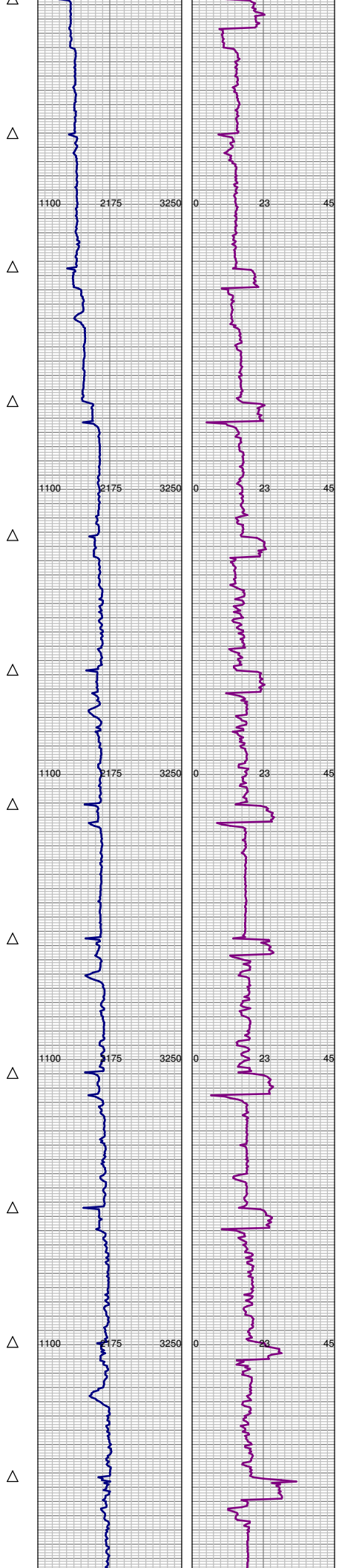
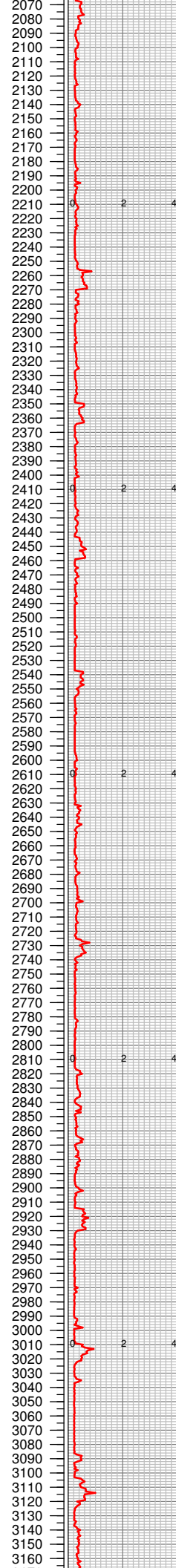
COUNTY: GARFIELD
STATE: COLORADO
DRILLING FLUID: LSND
LOGGER: LUKE DAVENPORT

GROUND ELEVATION: 5141'
KELLY BUSHING: 5165'
TVD VS. MD = -223'
DEPTHS LOGGED: 1300' - 6170'

SPUD DATE: 06/13/2014
FGS BEGIN LOGGING: 06/15/2014
TD DATE: 06/17/2014
DATES LOGGED: 06/15/2014 - 06/17/2014



-1310 TRANSFER F/ACTIVE T/UPRIGHT
-1310 TRANSFER F/DAY TANK T/SLUG
-1310 MUD IN 9.3 / 72 pH IN 9.2
-1310 FILL PIPE
-1310 PUMP THRU MOTOR/BIT
-1310 TRANSFER F/ACTIVE T/UPRIGHT
-1349 MUD IN 8.7 / 50 pH IN 9
-1450 MUD IN 8.8 / 55 pH IN 9.5
-1592 SURVEY
-1598 MUD IN 8.8 / 52 pH IN 9.4
-1780 SURVEY
-1818 MUD IN 8.85 / 50 pH IN 9.2
-1875 SURVEY
-1969 SURVEY
-2063 SURVEY



2070
2080
2090
2100
2110
2120
2130
2140
2150
2160
2170
2180
2190
2200
2210
2220
2230
2240
2250
2260
2270
2280
2290
2300
2310
2320
2330
2340
2350
2360
2370
2380
2390
2400
2410
2420
2430
2440
2450
2460
2470
2480
2490
2500
2510
2520
2530
2540
2550
2560
2570
2580
2590
2600
2610
2620
2630
2640
2650
2660
2670
2680
2690
2700
2710
2720
2730
2740
2750
2760
2770
2780
2790
2800
2810
2820
2830
2840
2850
2860
2870
2880
2890
2900
2910
2920
2930
2940
2950
2960
2970
2980
2990
3000
3010
3020
3030
3040
3050
3060
3070
3080
3090
3100
3110
3120
3130
3140
3150
3160

-2005 SURVEY

-2105 MUD IN 9 / 54 pH IN 9.3

-2253 MUD IN 9 / 55 pH IN 9.1

-2253 SURVEY

-2347 SURVEY

-2356 MUD IN 9.05 / 58 pH IN 9.5

-2441 SURVEY

-2479 MUD IN 9.2 / 59 pH IN 9.5

-2502 TRANSFER F/U/RIGHT T/SLUG

-2552 PUMP SWEEP

-2655 MUD IN 9.15 / 60 pH IN 9

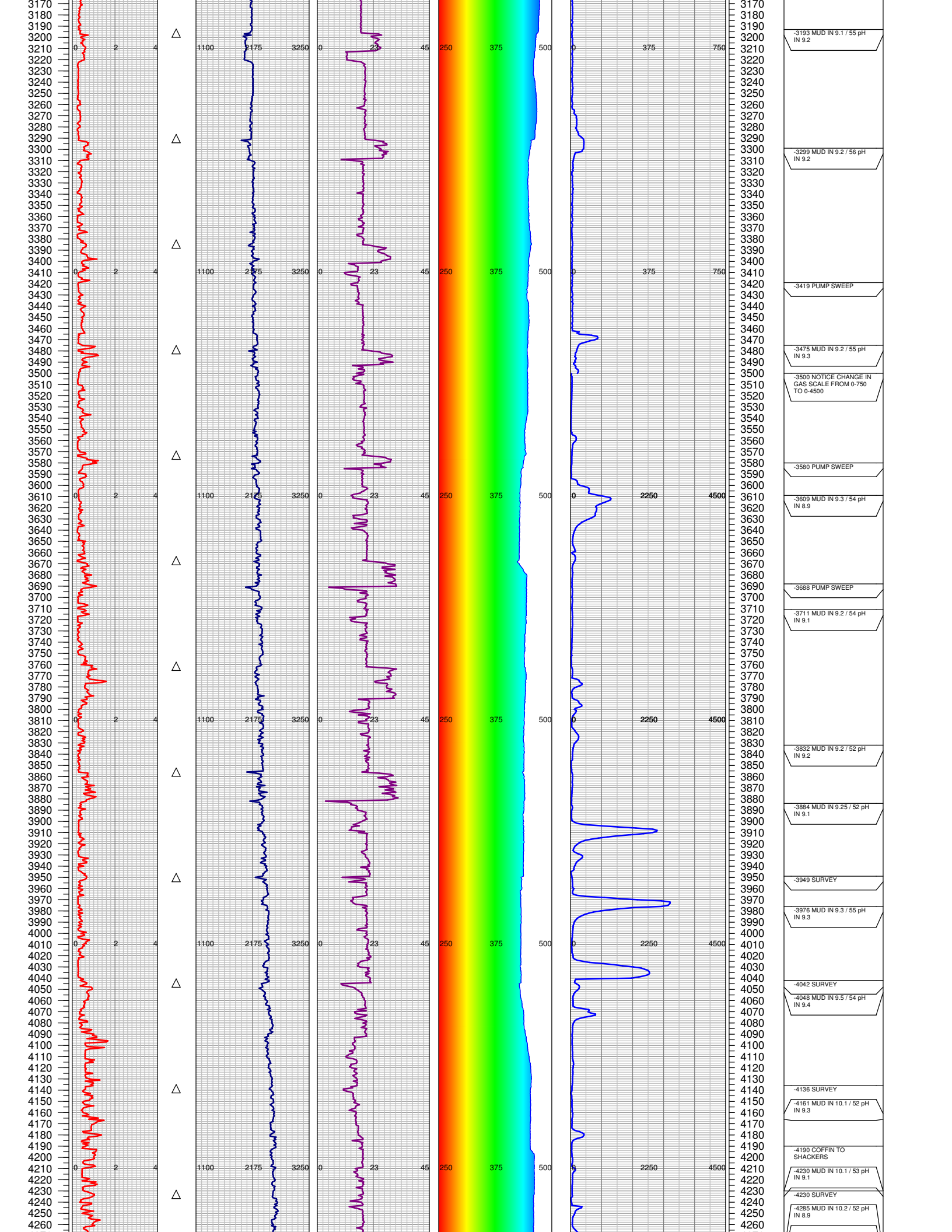
-2739 PUMP SWEEP

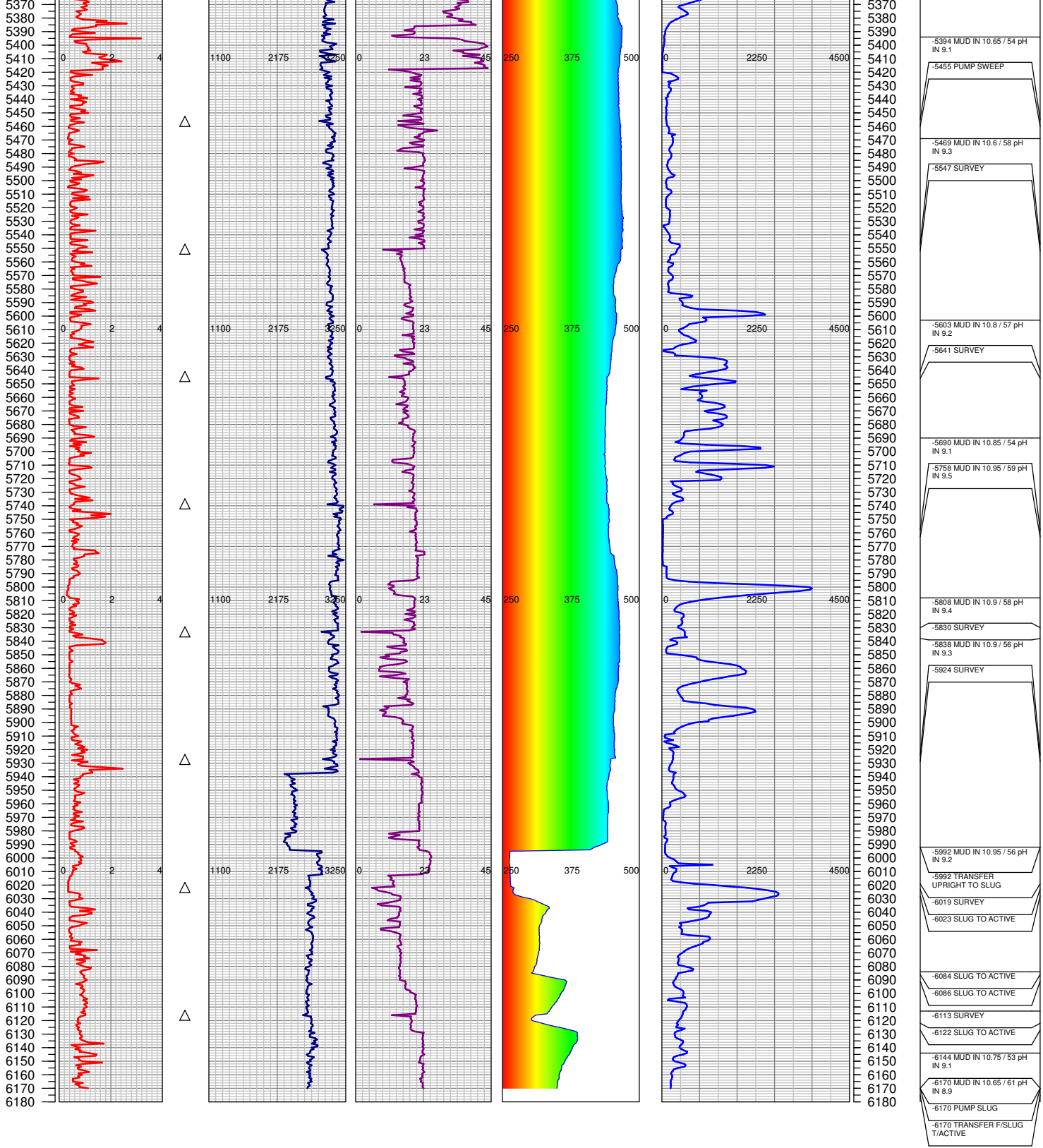
-2817 MUD IN 9.15 / 59 pH IN 9.1

-3005 MUD IN 9.2 / 56 pH IN 9.2

-3010 PUMP OUT CELLAR

-3024 PUMP SWEEP





TOTAL DEPTH = 6170'

FGS RELEASED: 06/17/2014