



RESERVOIR PERFORMANCE MONITOR

Baker Atlas

| | | |
|----------------|---------|----------------------|
| File No: | Company | WPX ENERGY |
| CH087685 | Well | C&C ENERGY GM 411-13 |
| API No: | Field | GRAND VALLEY |
| 05045222630000 | County | GARFIELD |
| | State | COLORADO |

| | | | | |
|--------------|----------|---|----------------|-----|
| 13 75 96W | Location | SHL: 280' FSL & 994' FWL (SEC 12) BHT: 898' FNL & 823' FWL (SWMW SEC 13) | Other Services | RPM |
| GM 24-12 PAD | | | | |
| H&P 318 | SEC 13 | TWP 7S | RGE 96W | |

| | | | | |
|---------------------|---------------|-----------|-------------|------------------|
| Permanent Datum | GL | Elevation | 5141 ft | Elevations |
| Log Measured From | KB | 24 ft | Above P. D. | KB 5165 ft DF |
| Drill Measured From | KELLY BUSHING | | | GL 5141 ft |

| | |
|------------------------------|-----------------------|
| Date | 21/JUL/14 |
| Run | ONE |
| Service Order | US087685J |
| Depth Driller | 6123 ft |
| Depth Logger | 6042 ft |
| Bottom Logged Interval | 6032 ft |
| Top Logged Interval | 2936 ft |
| Time Started | 0730 |
| Time Finished | 1230 |
| Operator Rig Time | 5 HRS |
| Type of Fluid in Hole | WATER |
| Fluid Density | NA |
| Salinity | NA |
| Fluid Level | 60 ft |
| Logged Cement Top | NA |
| Wellhead Pressure | 0 psi |
| Maximum Hole Deviation | NA |
| Nominal Logging Speed | 10 fpm |
| Maximum Recorded Temperature | 204 degF |
| Reference Log | BAKER HUGHES BOND LOG |
| Reference Log Date | 20/JUL/14 |
| Equipment No. | 4271 |
| Recorded By | FLORV D RENEAU |
| Witnessed By | JEFF BRADY |

- FOLD HERE

In making interpretations of logs, our employees will give the customer the benefit of their best judgement. But since all interpretations are opinions based on inferences from electrical or other measurements, we cannot, and we do not guarantee the accuracy or correctness of any interpretation. We shall not be liable or responsible for any loss, cost, damages, or expenses whatsoever incurred or sustained by the customer resulting from any interpretation made by any of our employees.

| Borehole Record | | |
|-----------------|---------|---------|
| Bit Size | From | To |
| 13.5 in | 24 ft | 1277 ft |
| 8.75 in | 1277 ft | 6123 ft |

| Casing Record | | | | |
|---------------|-------------|-------|-------|---------|
| Size | Weight | Grade | From | To |
| 9.625 in | | | 24 ft | 1277 ft |
| 4.5 in | 11.6 lbm/ft | I-80 | 24 ft | 6123 ft |

Remarks

All data on this log is shifted and depth matched using the Gamma Ray curve to the Baker Hughes bond log dated 7/20/2014 at the client's request.

The amount of linear shift is 4 feet.

Logged with zero PSI at wellhead.

BHT = 204°F

SJ = 2630'-2653'

Equipment Data

| Run | Trip | Tool | Series Number | Serial Number | Position |
|-----|------|---------|---------------|---------------|----------|
| 1 | 1 | TEMP | 8255XA | Z120516 | FREE |
| 1 | 1 | RPM | 8281FA | 10401926 | FREE |
| 1 | 1 | RPM | 8281PA | 10160383 | FREE |
| 1 | 1 | RPM | 8281EA | 10190984 | FREE |
| 1 | 1 | GR | 2812LA | 10274385 | FREE |
| 1 | 1 | TEL/CCL | 8248ED | 10460262 | FREE |
| 1 | 1 | PCM | 8250EA | 10586851 | FREE |

**MAIN SECTION
PNC 3-D MODE**

SPL PROCESSING

| MEASUREMENT TYPE | PARAMETER | VALUE | UNITS | TOP | BOTTOM |
|------------------|--------------------------|----------------|-------|----------|----------|
| PNC Porosity | Borehole | Cased | | 2903.605 | 6039.730 |
| PNC Porosity | Borehole Size | 8.750 | inch | 2903.605 | 6039.730 |
| PNC Porosity | Casing Size | 4.500 | inch | 2903.605 | 6039.730 |
| PNC Porosity | Gas Filled | Non Gas Filled | | 2903.605 | 6039.730 |
| PNC Porosity | Matrix | Sandstone | | 2903.605 | 6039.730 |
| TPS Pressure | Temperature Corr. Source | Fixed (72.00) | degF | 2903.605 | 6039.730 |

DEPTH OFFSETS

(for Acquired Curves)

| SERIES | DEPTH OFFSET | ACQUIRED CURVES |
|--------|--------------|---|
| 8248ED | -26.519 | FLTM |
| 8248ED | -24.519 | CCL CHV |
| 2812LA | -21.969 | GR |
| 8281XA | -12.702 | HVC3Q0 SEQ3 AMA3 AML3 BKX CXS CPT3Q0 CPT3Q2 CPT3Q3 CPT3Q4 ET3 IXS MCS3 MCS3Q0 QCAL3 RGN3 RICX SDA3 SDL3 SGA3 SGL3 STA3 XS ASPEC3 |

8281XA

-12.291

AMB3 AMF3 CHF3 IXSC IXSN RATO23
 RICXC RIN13C RIN23 RIN23C SD3D SG3D
 SGB3 SGF3 WDT3 CXSR IXSR XSR
 RICXR
 HVC2Q0 SEQ2 AMA2 AMB2 AMF2 AML2
 BKL CHF2 CLS CPT2Q0 CPT2Q2 CPT2Q3
 CPT2Q4 ET2 ILS LS MCS2 MCS2Q0
 QCAL2 RGN2 RICL RONE23 RTWO23 SDA2
 SDL2 SGA2 SGB2 SGF2 SGK2 SGL2
 STA2 ASPEC2 ILSC ILSN WDT2 RICLC
 CLSR ILSR LSR RICLR

8281XA

-12.041

CPRS HVC1Q0 MV SEQ SEQ1 AMA1
 AMB1 AME1 AMF1 AML1 BKS CHF1
 CSS CORB CORF CPT1Q0 CPT1Q2 CPT1Q2A
 CPT1Q2B CPT1Q2C CPT1Q3 CPT1Q4 CPT1Q5 ET1
 G1 G2 GE1S GE2S ISS MCS1
 MCS1Q0 QA1 QCAL1 QM1 RATO RATO13
 RBOR RGN1 RICS RIN RONE RPOR
 RTWO RIN13 RONE13 RTWO13 SALB SC1
 SDA1 SDL1 SGA1 SGB1 SGBC SGE1
 SGF1 SGFC SGK1 SGL1 SS SS2
 STA1 PD1S PD2S PD3S MD1S MD2S
 MD3S DG1S DG2S DG3S PD1M PD2M
 PD3M MD1M MD2M MD3M DG1M DG2M
 DG3M MVS MA MVM FILV IAM
 TA PVM PVS IAS SSTAT QPD1
 QPD2 QPD3 QMD1 QMD2 QMD3 QDG1
 QDG2 QDG3 QMA QTA QFILV QMV
 QPV QIA DERR DCNT QPK1 QSA1
 PKS1 ASPEC1 H0C FE2XC ISSC RINC
 ISSN RDEN WDT1 RICSC CSSR G1R
 G2R ISSR SSR SS2R RATOR RATO13R
 RBORR RICSR RINR RIN13R RONER RPORR
 RTWOR

8255XA

-0.792

PTFS PTMS

8255XA

-0.775

SPF1 SPFQ TSCP TSDP

8255XA

0.000

DTEM TEMP TNF

SYSTEM

0.000

TEN TTEN

Created by : RPM9, v5.3.1.0

Plotted by : PlotMgr, v5.4.504

Company : WPX ENERGY

Well : C&C ENERGY GM 411-13

File Name : d:\well\data\wpx\lgm 411-13\rpm411\main.xtf

Mode : PlotMgr 5.4.504

Interval : 2903.73 - 6045.00 feet UP

Created : 7/21/2014 8:57:02 AM



60

SGFC

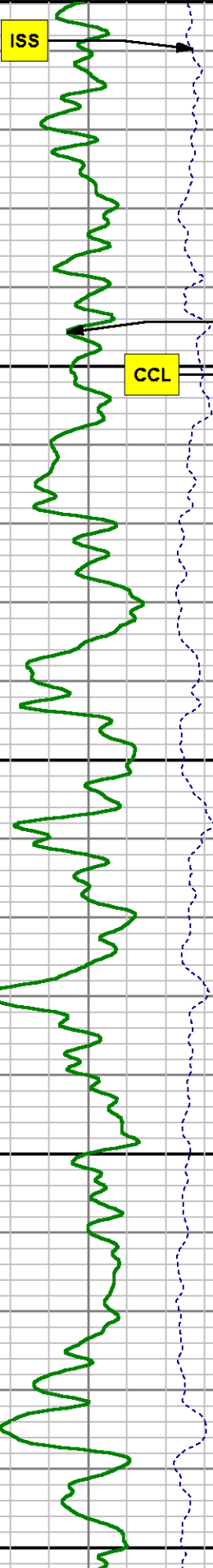
0

cu

SS

0 290000

cps



ISS

CCL

GR

3000

3100

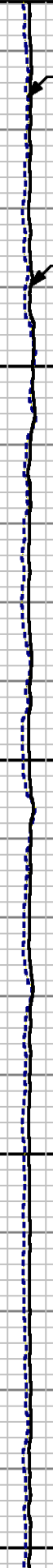
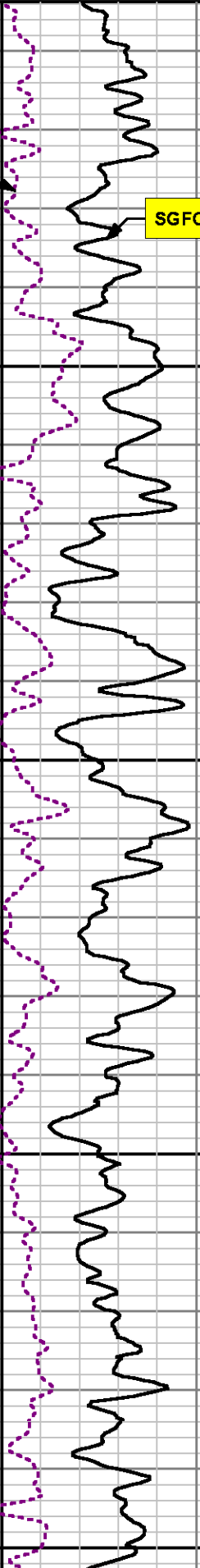
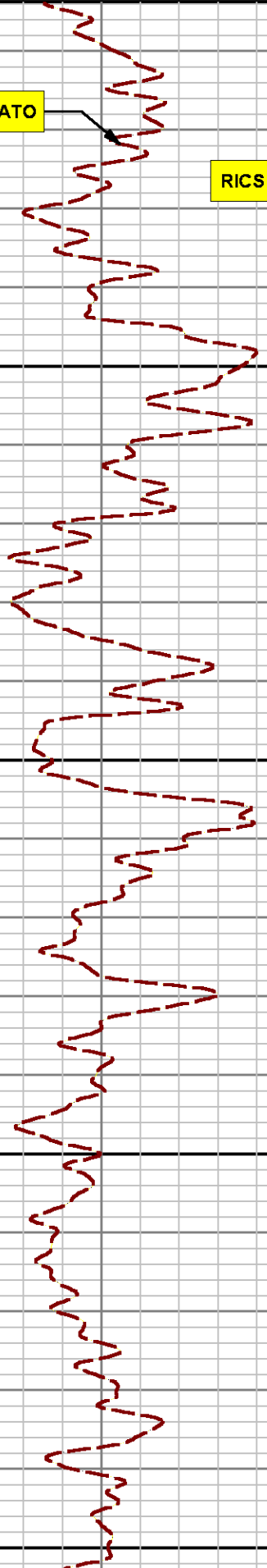
RATO

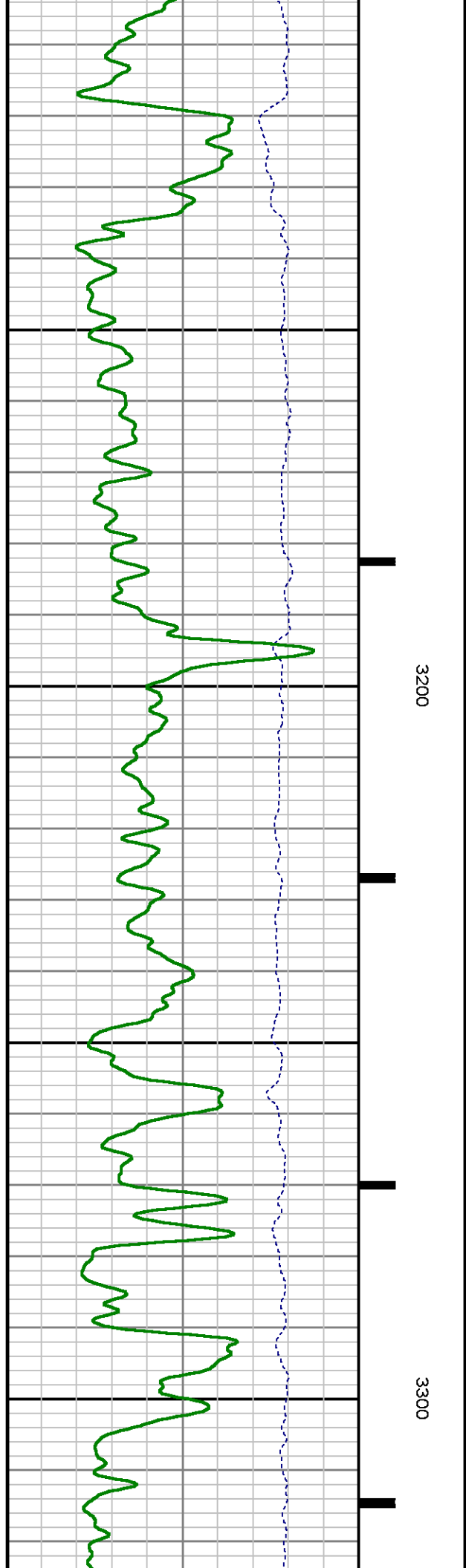
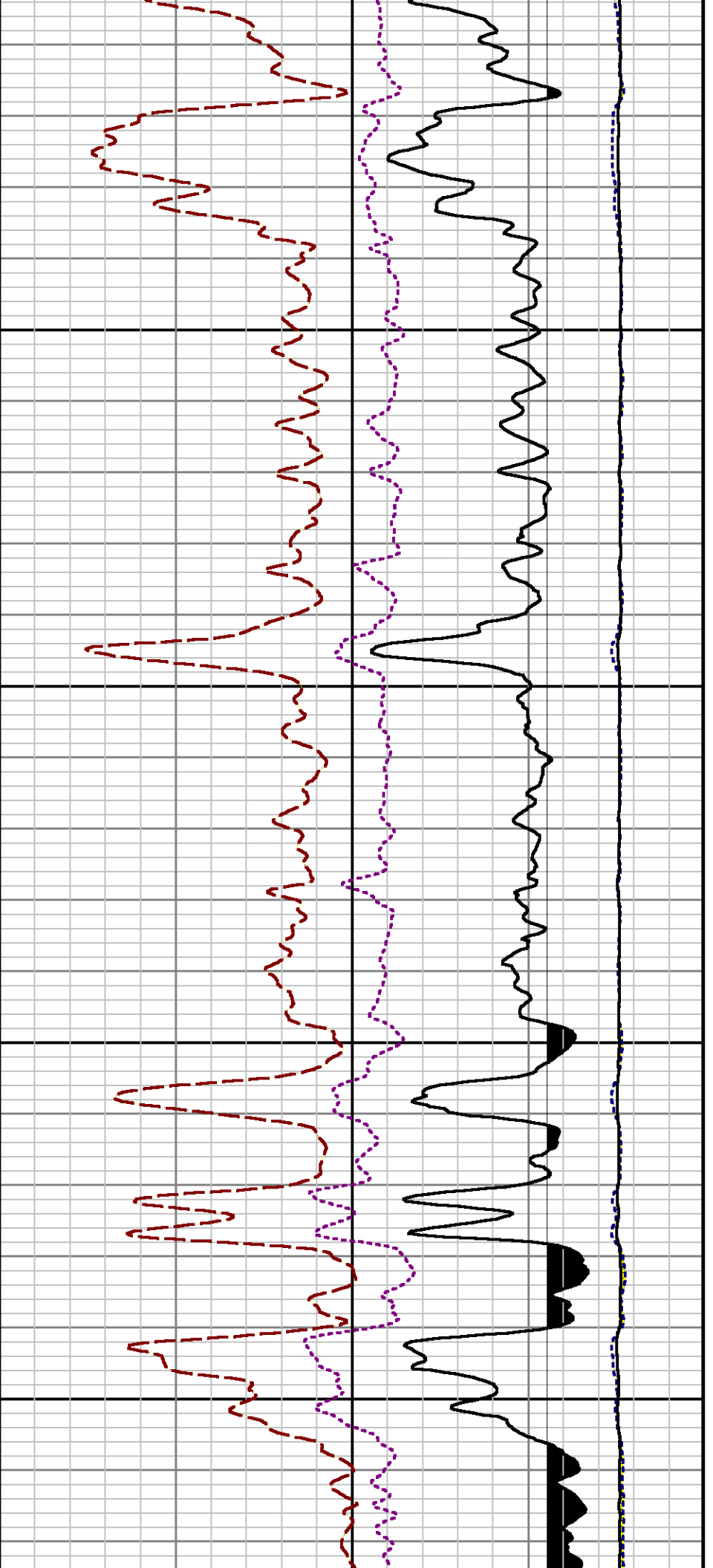
RICS

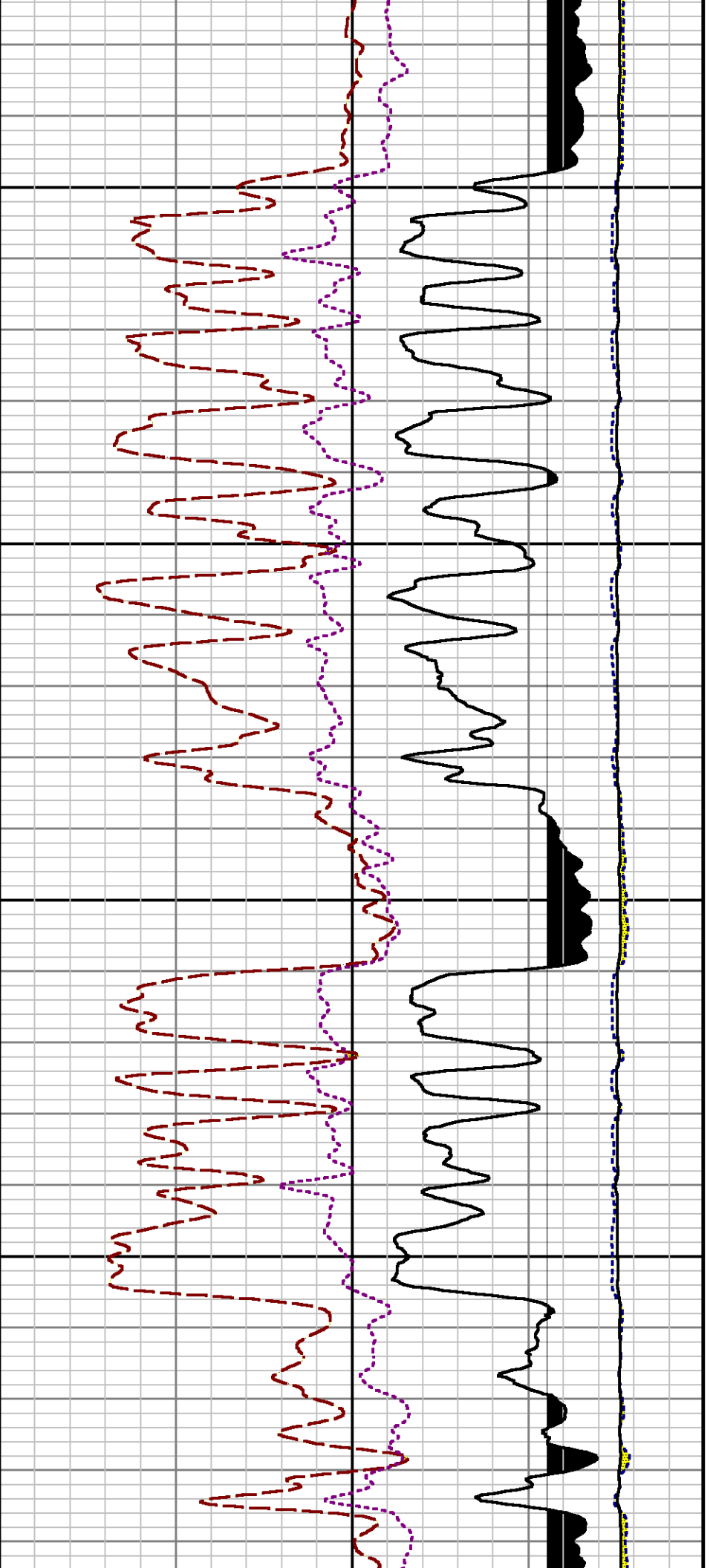
SGFC

LS

SS

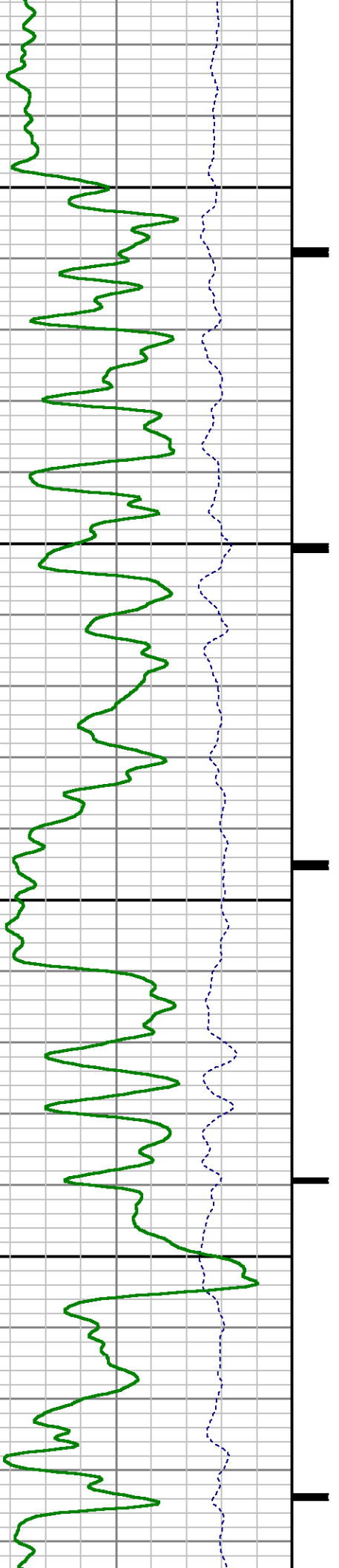


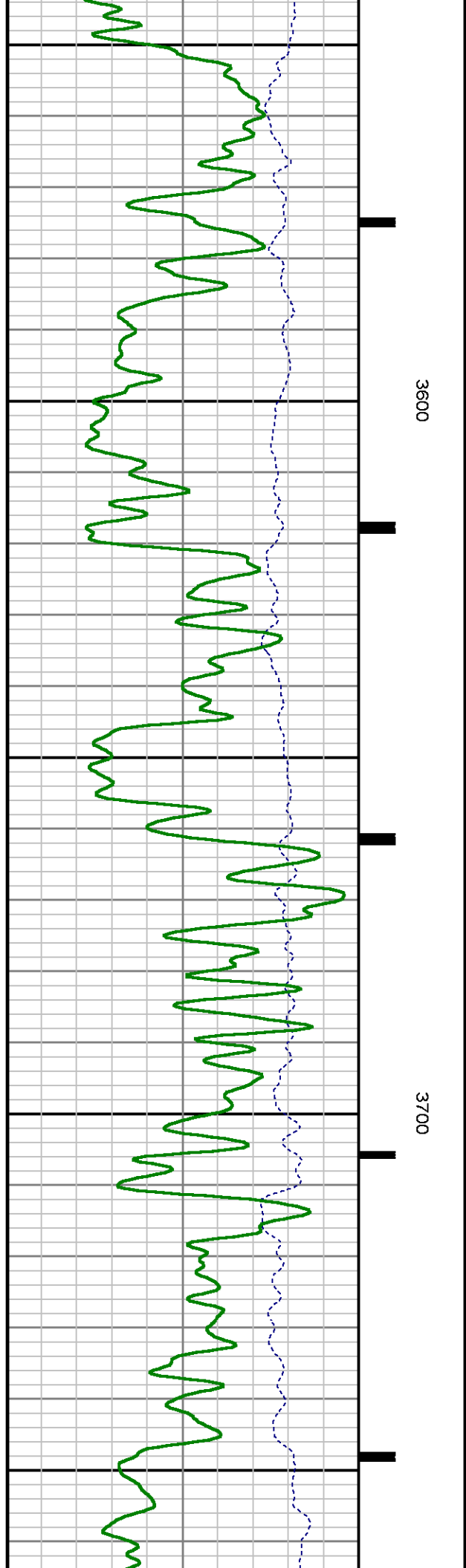
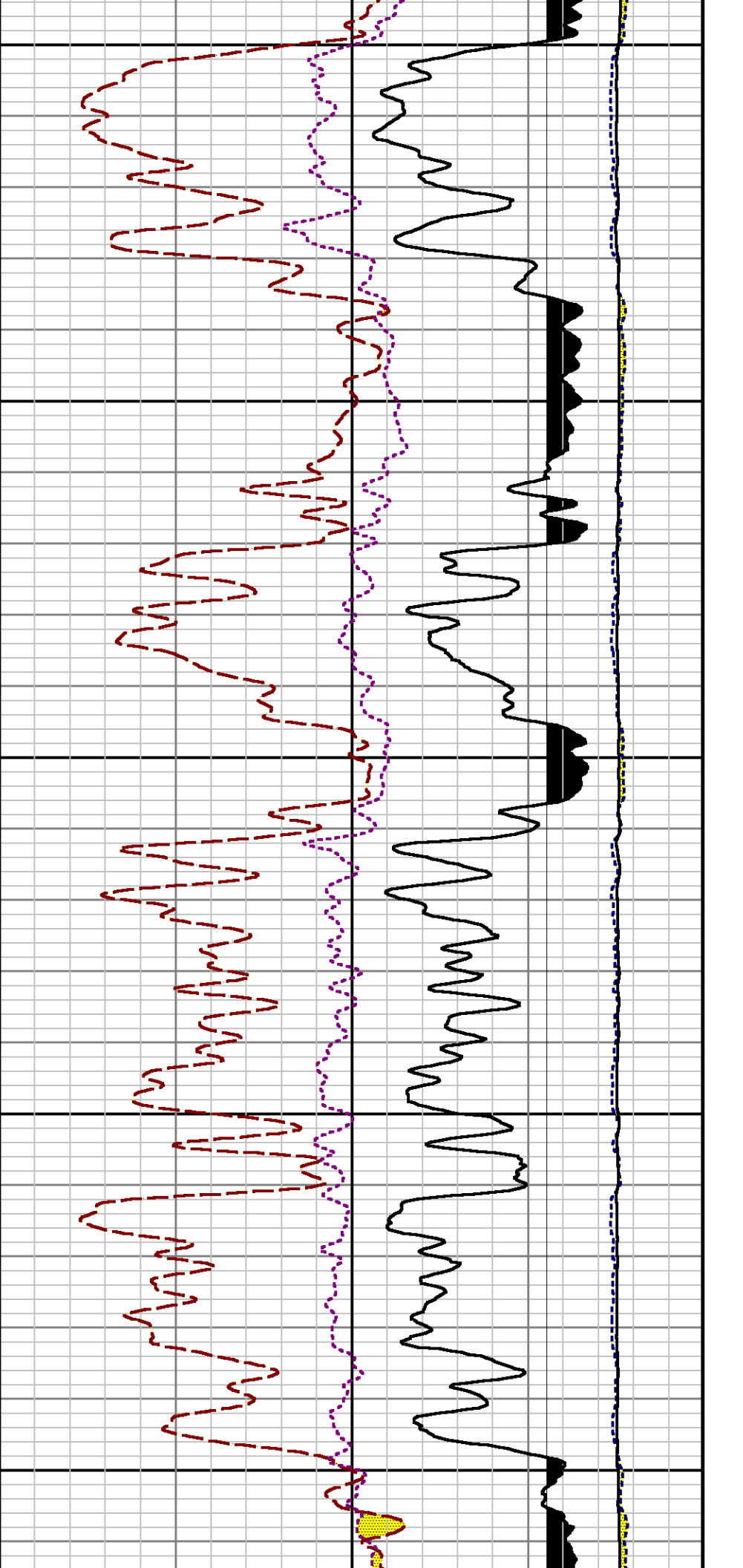


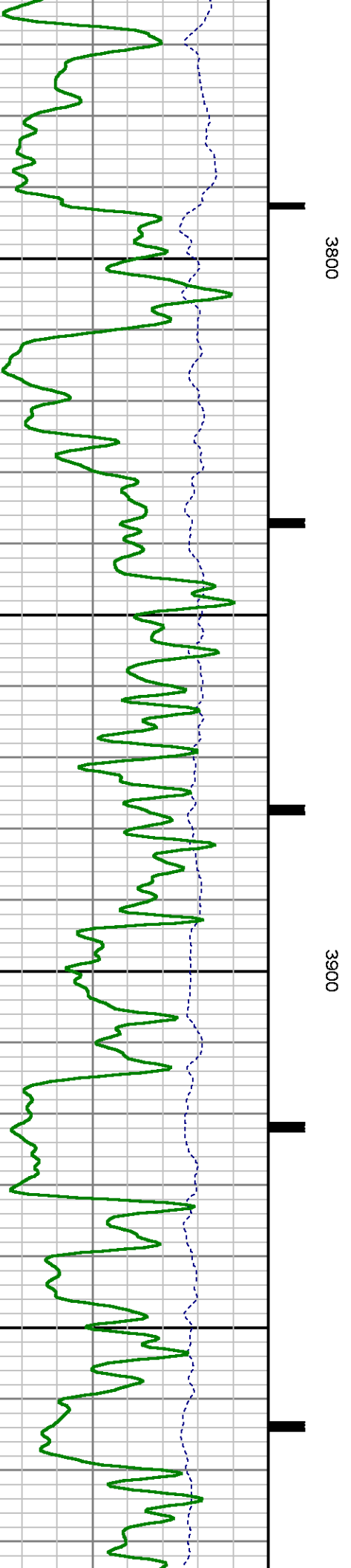
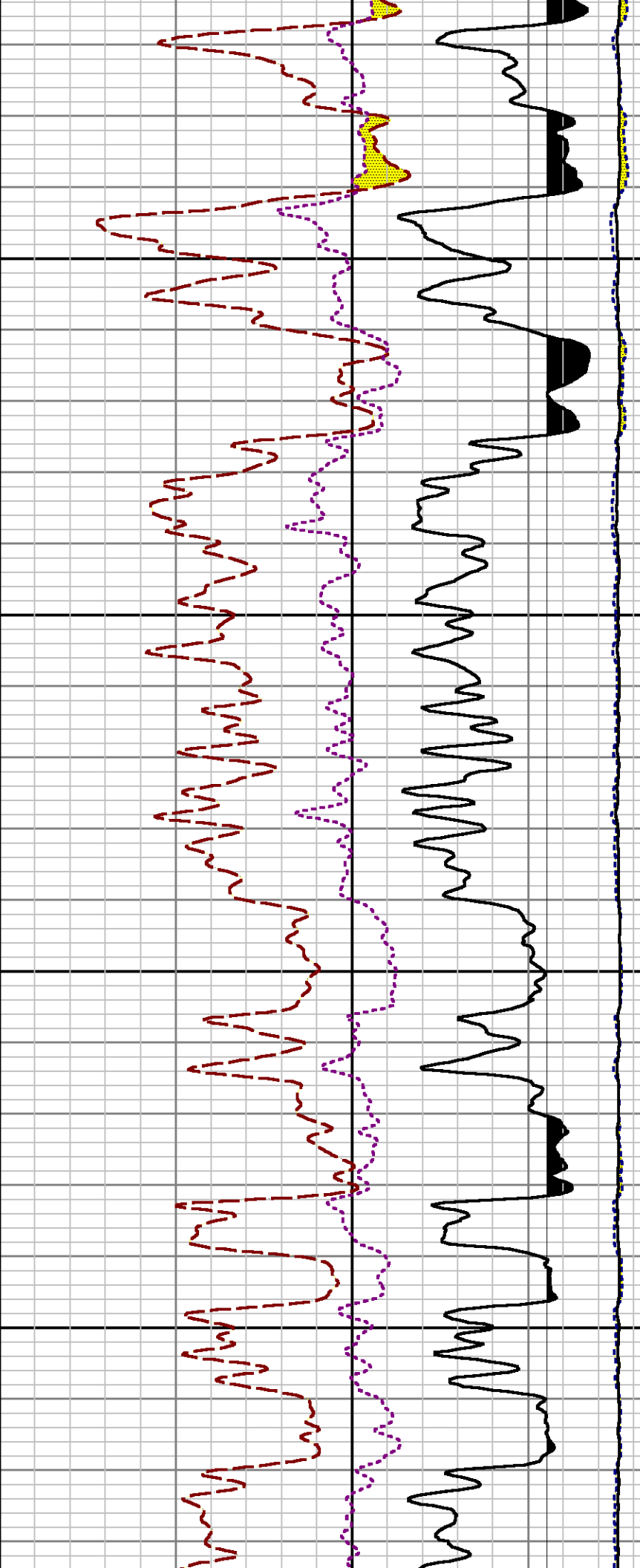


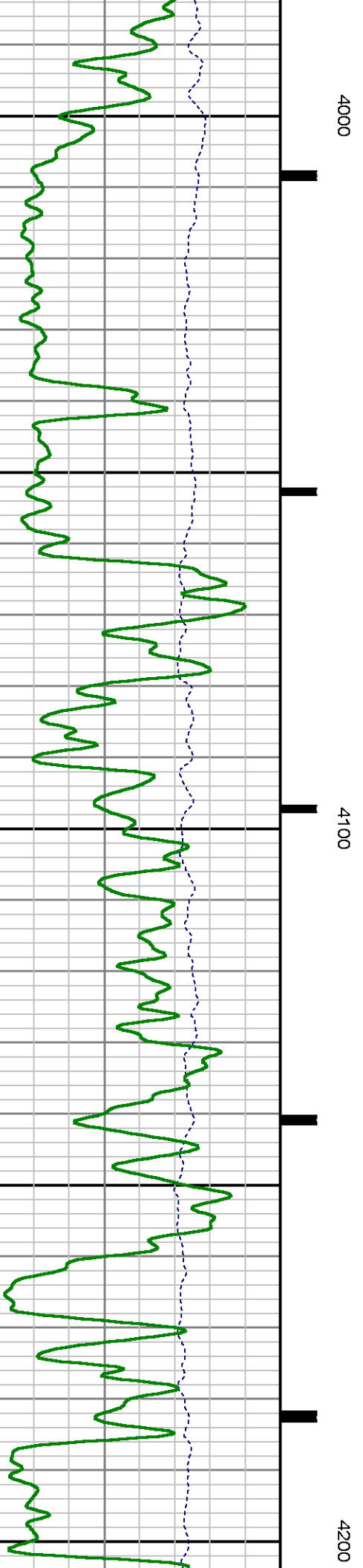
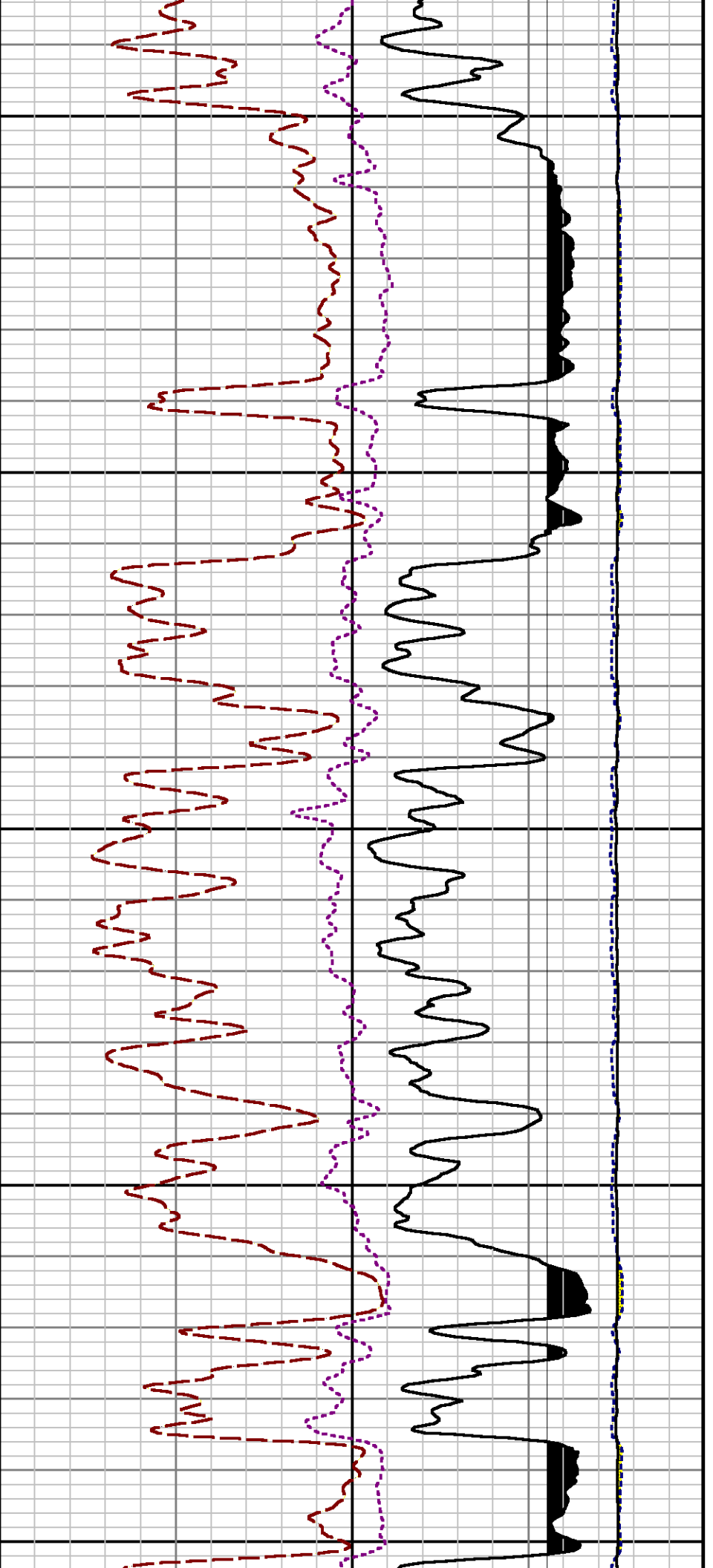
3400

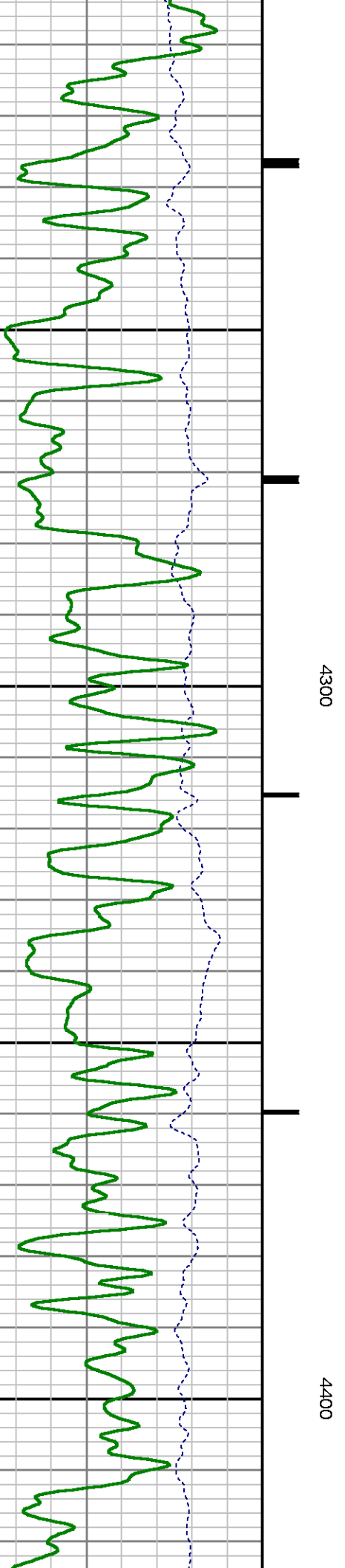
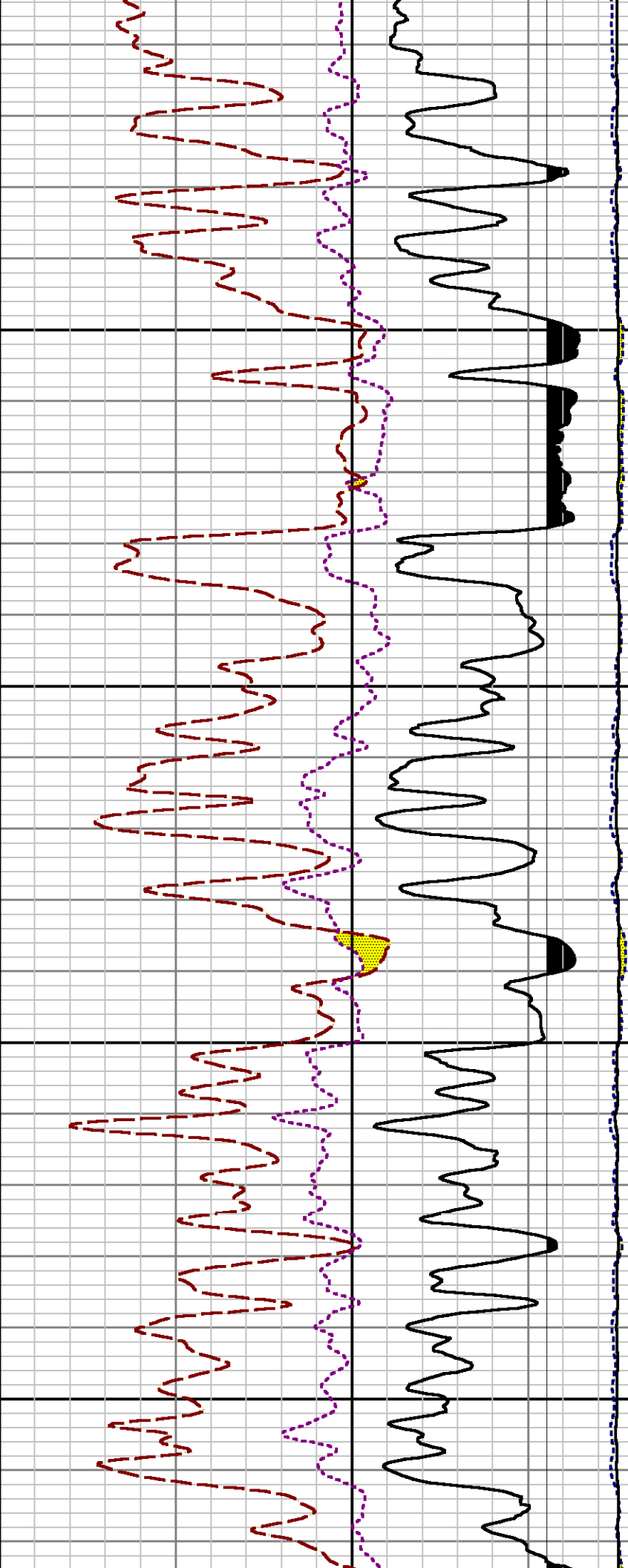
3500

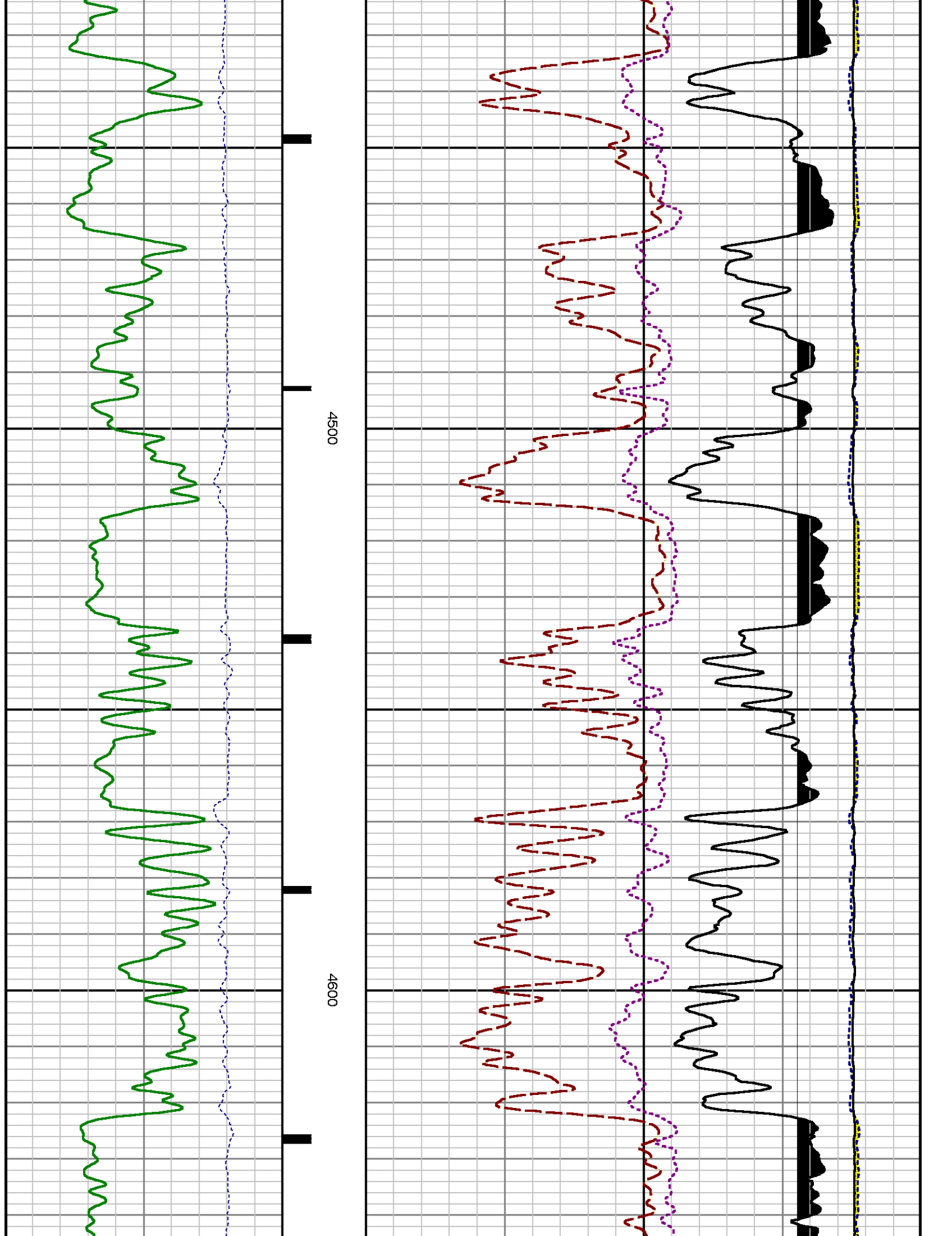


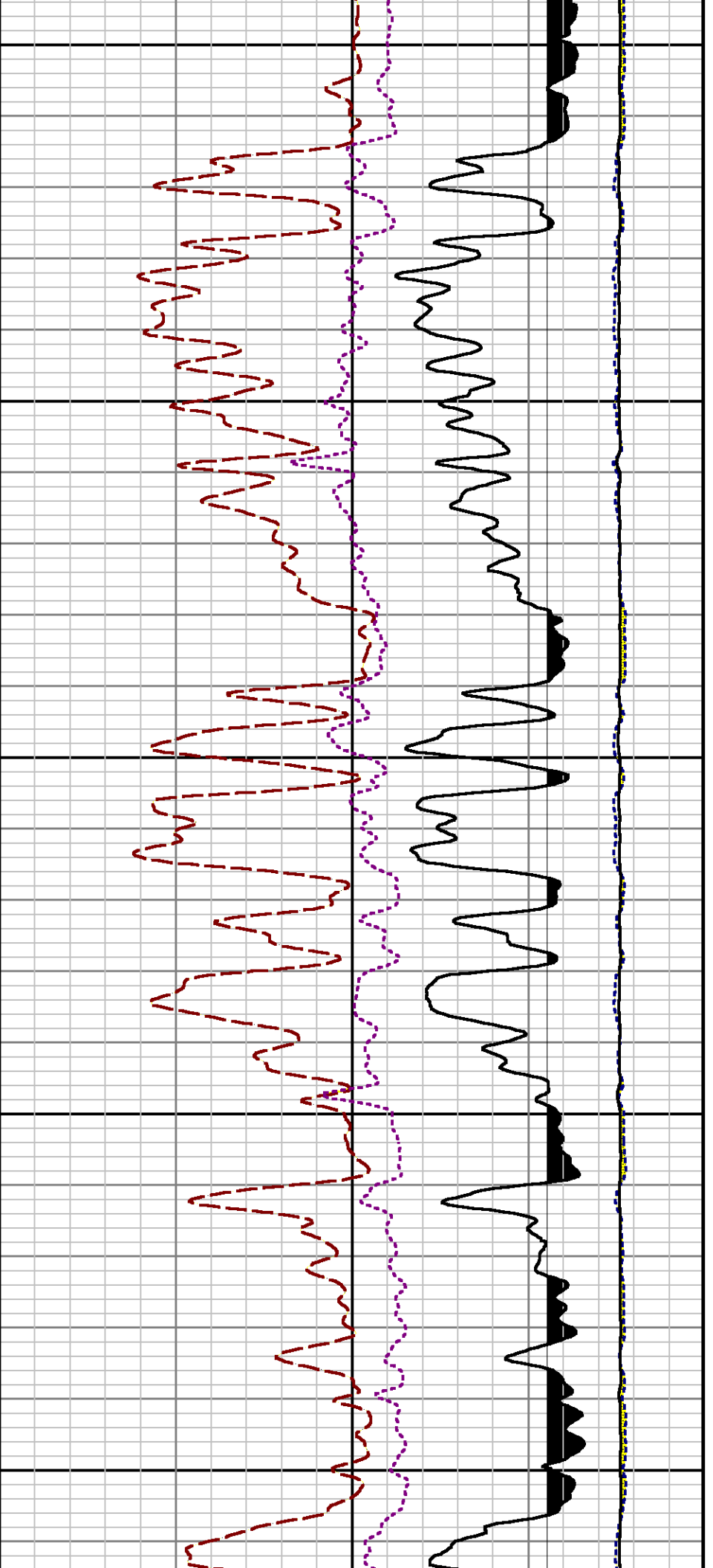






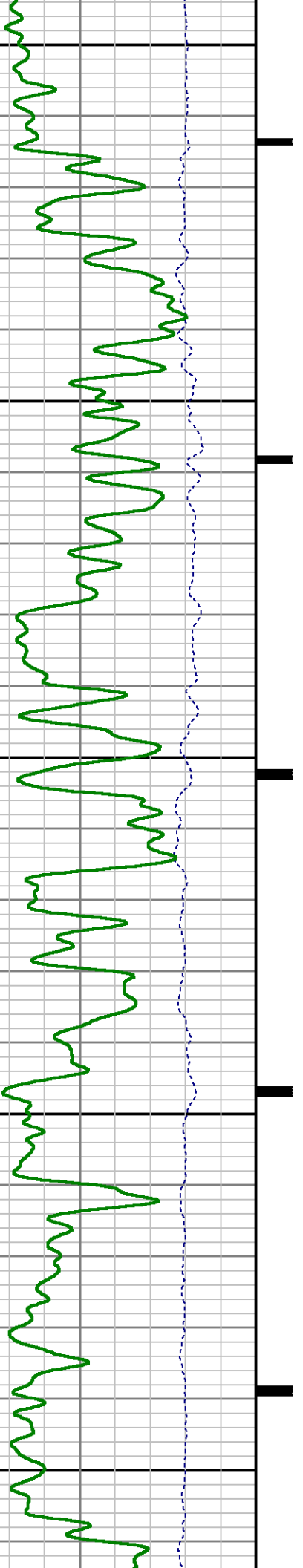


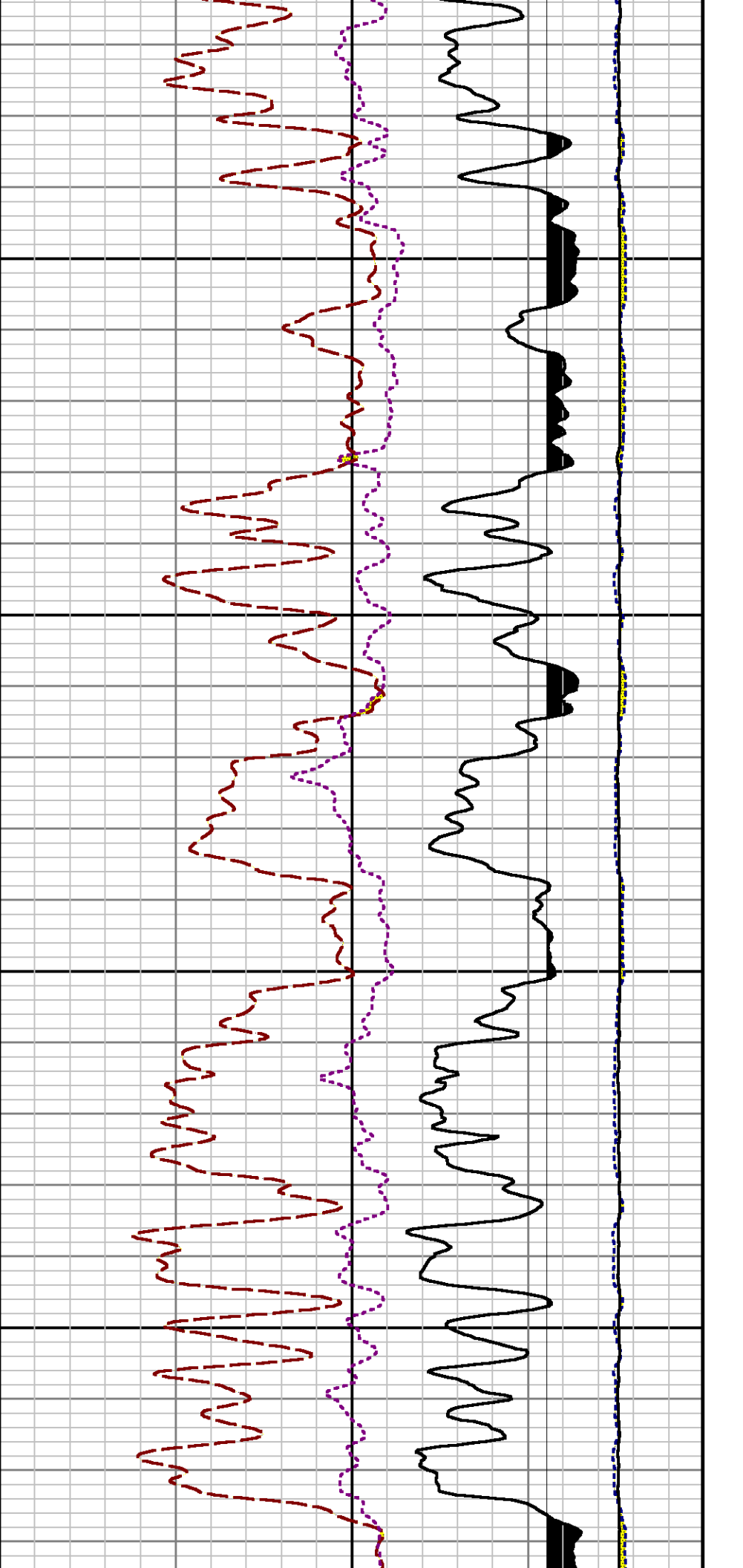




4700

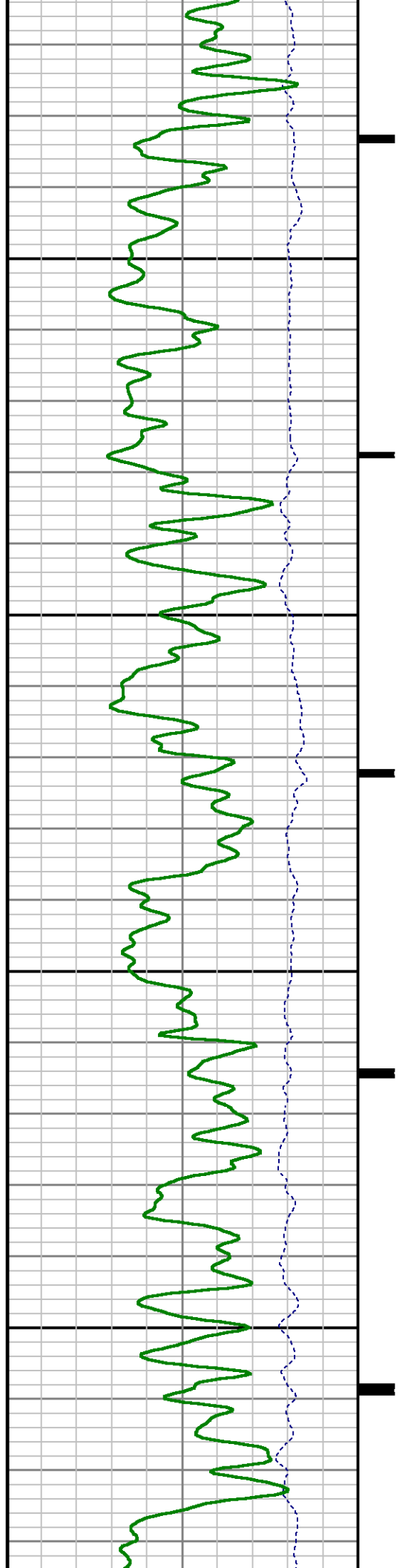
4800

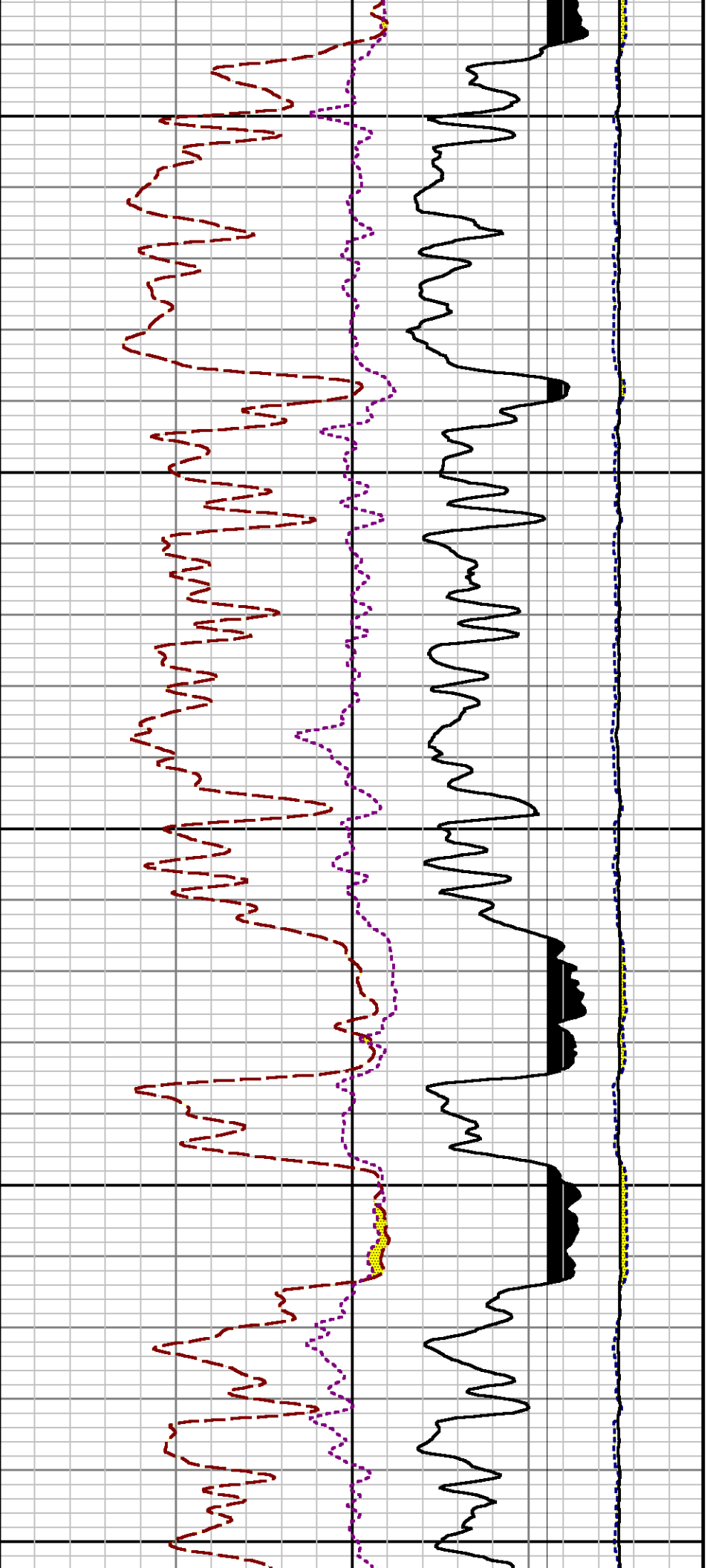




4900

5000

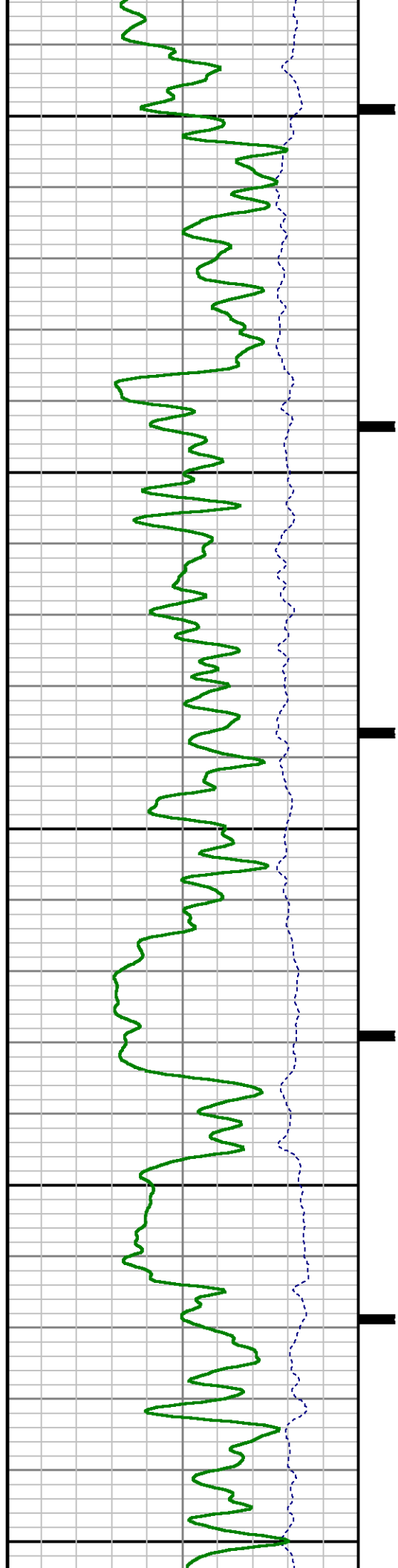


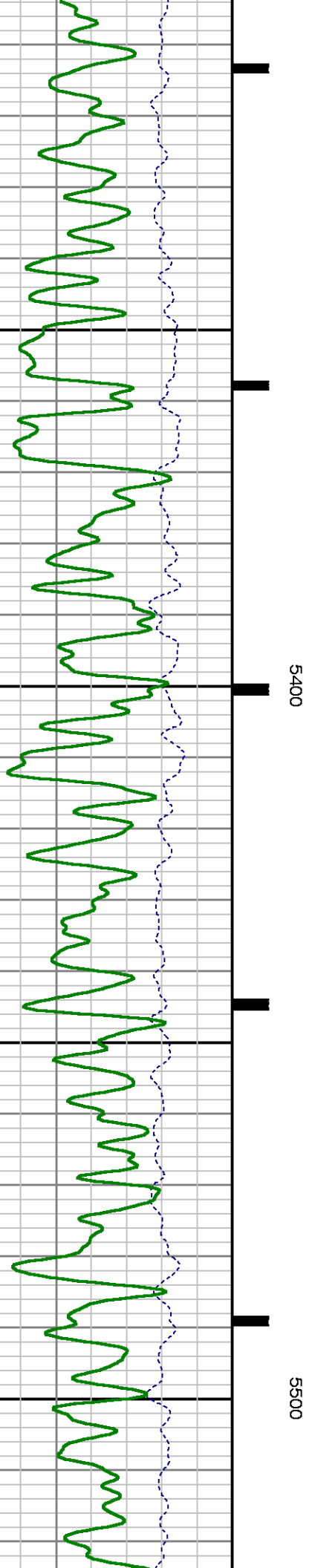
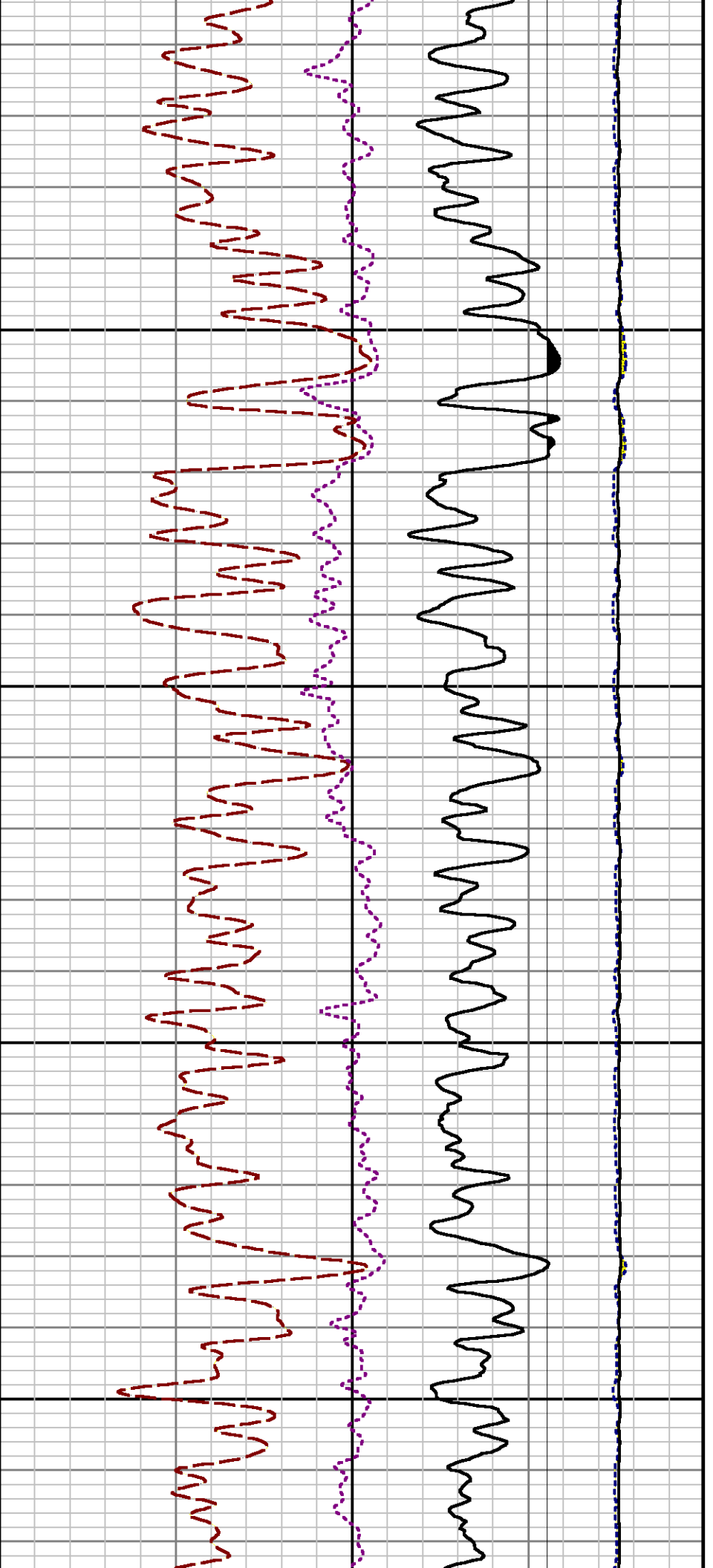


5100

5200

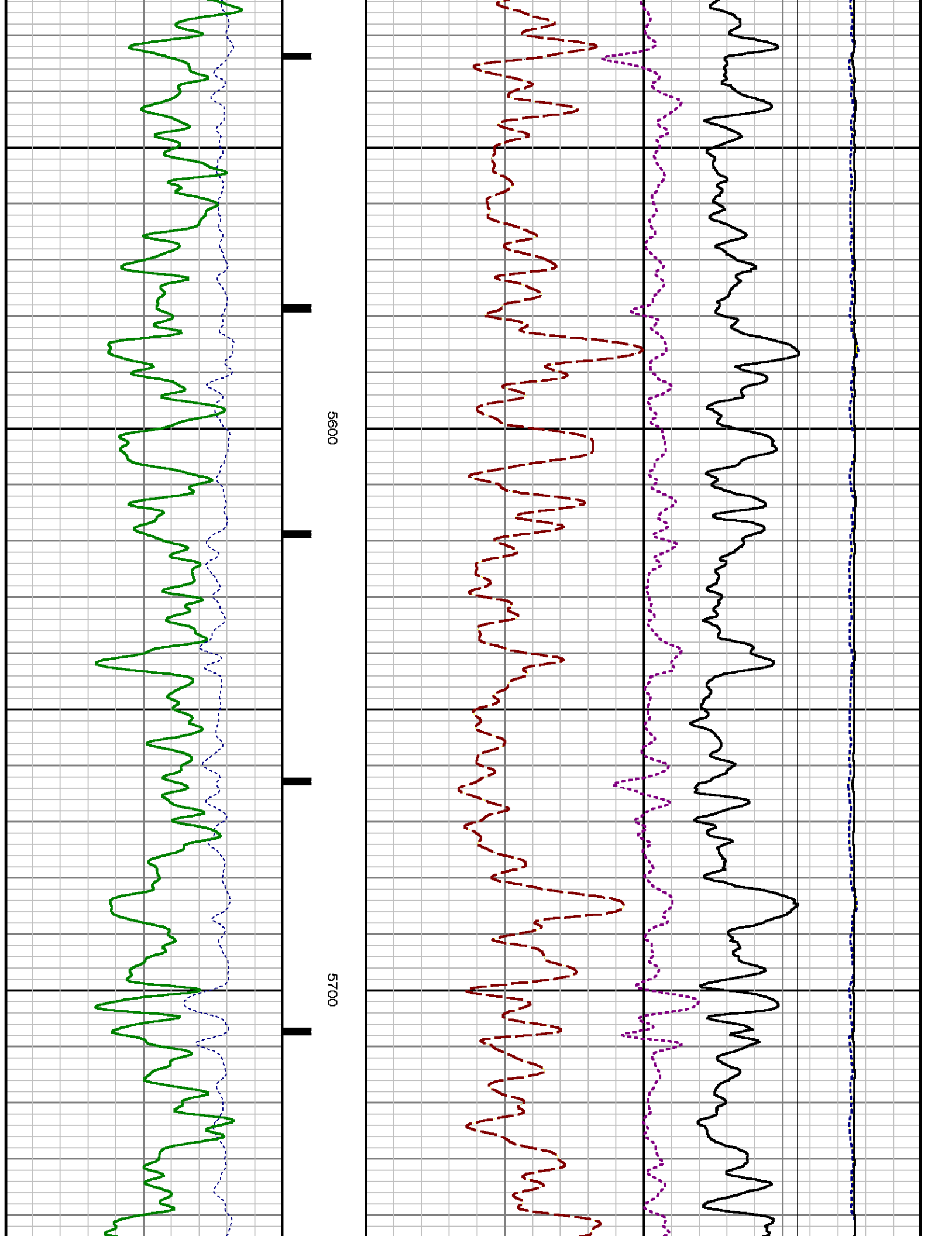
5300

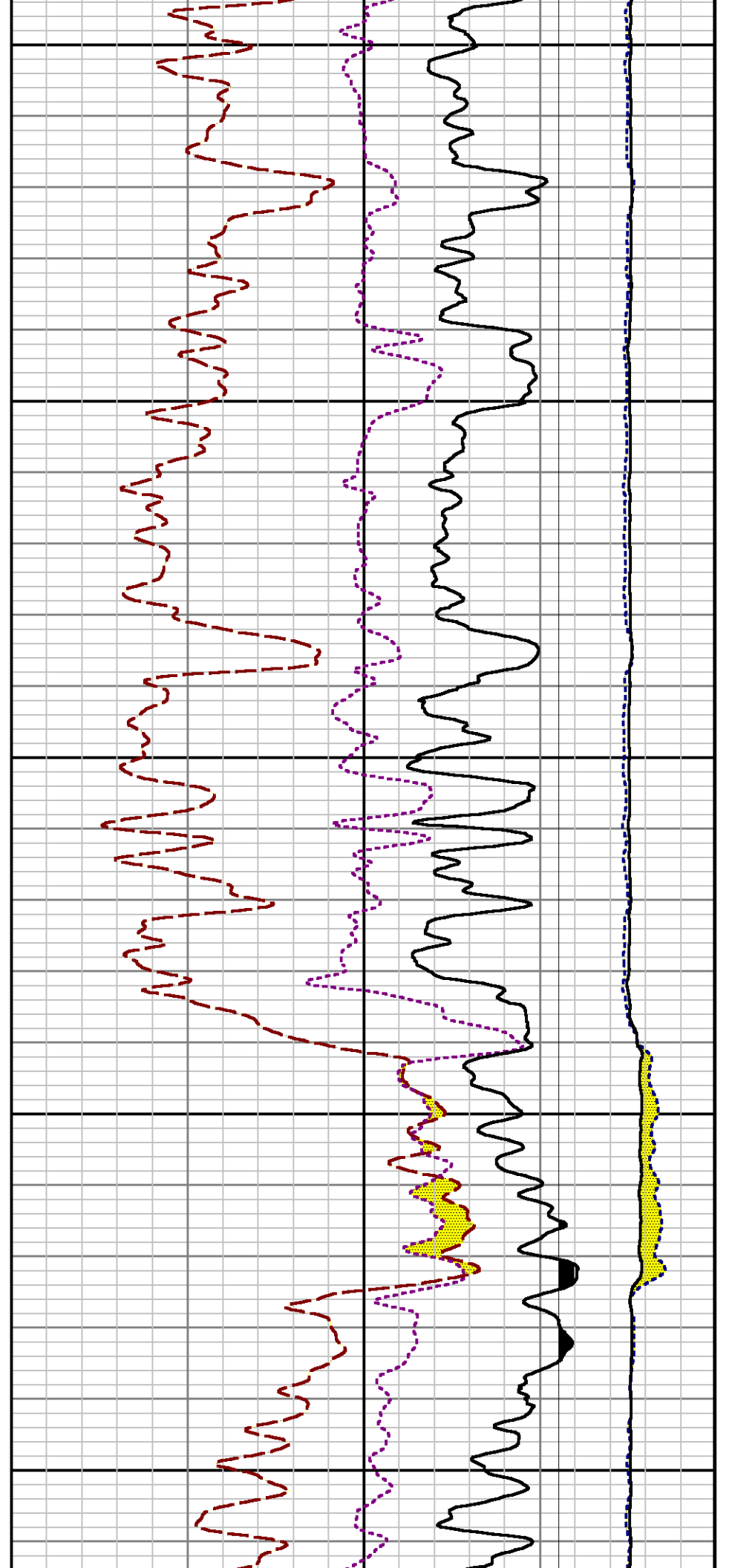
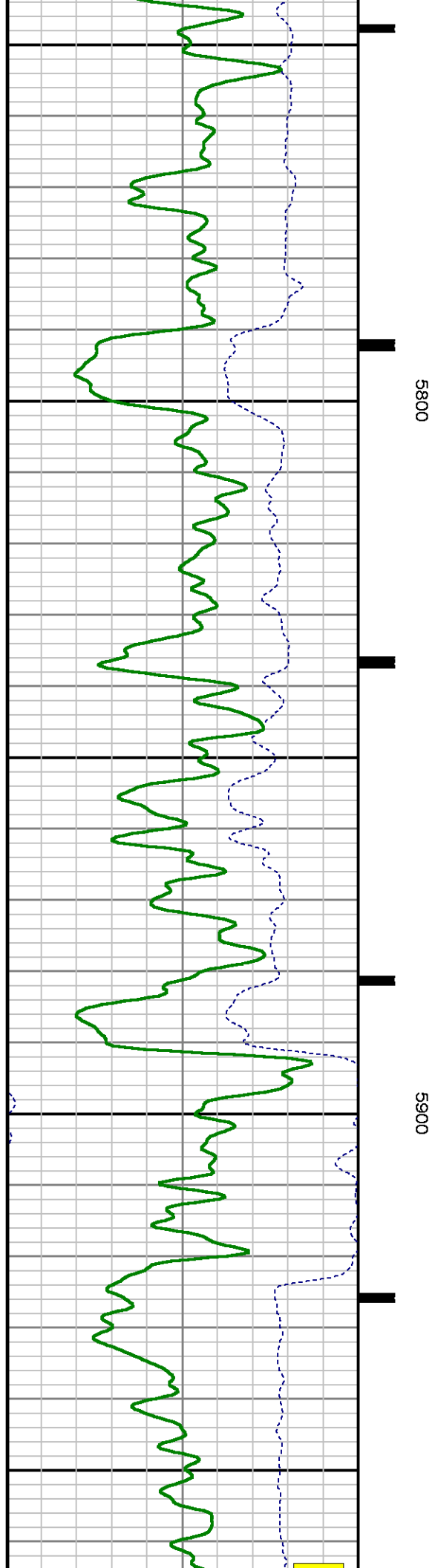


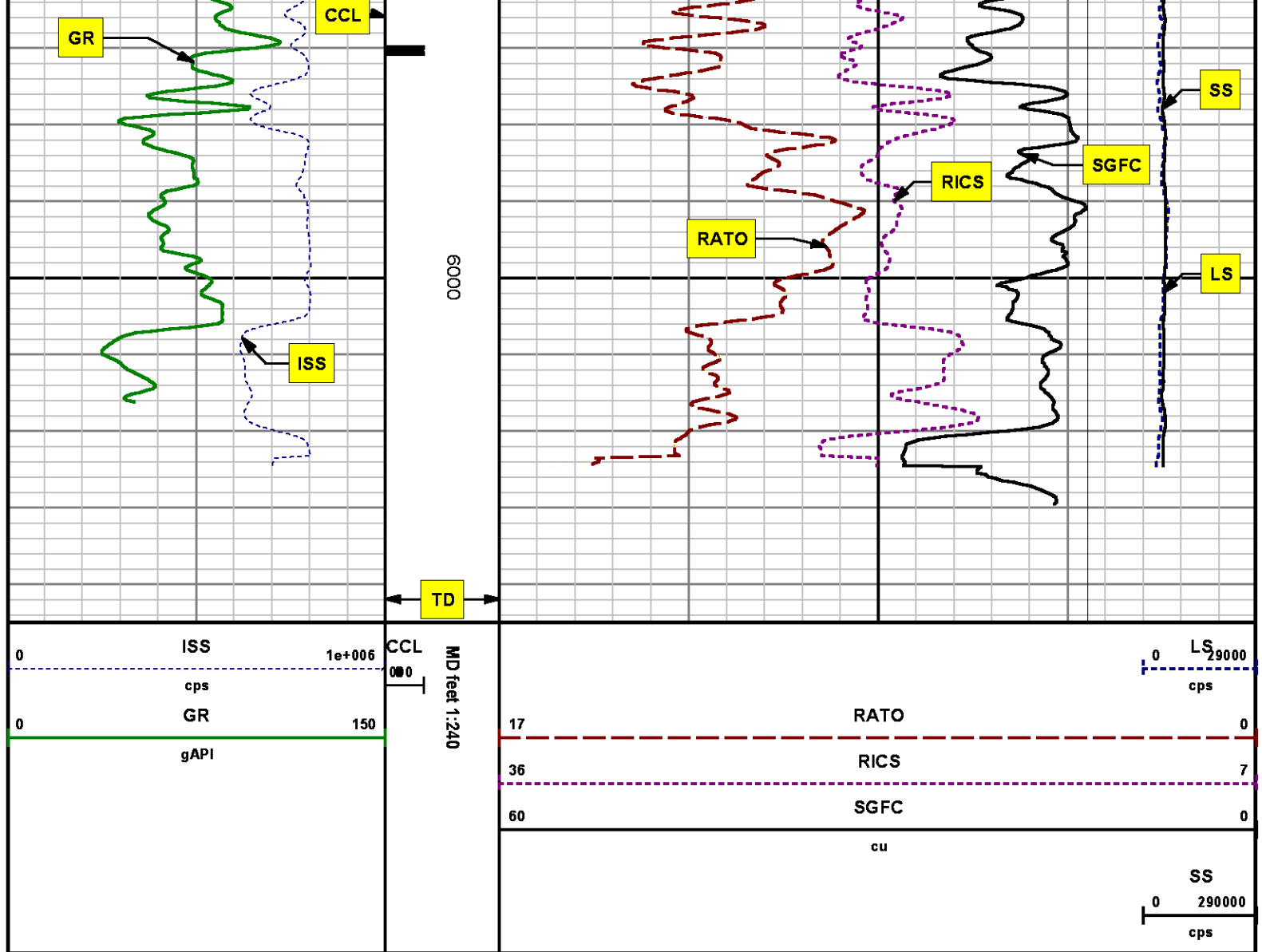


5400

5500







**REPEAT SECTION
PNC 3-D MODE**

SPL PROCESSING

| MEASUREMENT TYPE | PARAMETER | VALUE | UNITS | TOP | BOTTOM |
|------------------|---------------|----------------|-------|----------|----------|
| PNC Porosity | Borehole | Cased | | 5202.710 | 5530.460 |
| PNC Porosity | Borehole Size | 8.750 | inch | 5202.710 | 5530.460 |
| PNC Porosity | Casing Size | 4.500 | inch | 5202.710 | 5530.460 |
| PNC Porosity | Gas Filled | Non Gas Filled | | 5202.710 | 5530.460 |
| PNC Porosity | Matrix | Sandstone | | 5202.710 | 5530.460 |

DEPTH OFFSETS

(for Acquired Curves)

| SERIES | DEPTH OFFSET | ACQUIRED CURVES |
|---------------|---------------------|--|
| 8248ED | -26.519 | FLTM |
| 8248ED | -24.519 | CCL CHV |
| 2812LA | -21.969 | GR |
| 8281XA | -12.702 | HVC3Q0 SEQ3 AMA3 AML3 BKX CXS CPT3Q0 CPT3Q2 CPT3Q3 CPT3Q4 ET3 IXS MCS3 MCS3Q0 QCAL3 RGN3 RICX SDA3 SDL3 SGA3 SGL3 STA3 XS ASPEC3 AMB3 AMF3 CHF3 IXSC IXSN RATO23 RICXC RIN13C RIN23 RIN23C SD3D SG3D SGB3 SGF3 WDT3 CXSR IXSR XSR RICXR |
| 8281XA | -12.291 | HVC2Q0 SEQ2 AMA2 AMB2 AMF2 AML2 BKL CHF2 CLS CPT2Q0 CPT2Q2 CPT2Q3 CPT2Q4 ET2 ILS LS MCS2 MCS2Q0 QCAL2 RGN2 RICL RONE23 RTWO23 SDA2 SDL2 SGA2 SGB2 SGF2 SGK2 SGL2 STA2 ASPEC2 ILSC ILSN WDT2 RICLC CLSR ILSR LSR RICLR |
| 8281XA | -12.041 | CPRS HVC1Q0 MV SEQ SEQ1 AMA1 AMB1 AME1 AMF1 AML1 BKS CHF1 CSS CORB CORF CPT1Q0 CPT1Q2 CPT1Q2A CPT1Q2B CPT1Q2C CPT1Q3 CPT1Q4 CPT1Q5 ET1 G1 G2 GE1S GE2S ISS MCS1 MCS1Q0 QA1 QCAL1 QM1 RATO RATO13 RBOR RGN1 RICS RIN RONE RPOR RTWO RIN13 RONE13 RTWO13 SALB SC1 SDA1 SDL1 SGA1 SGB1 SGBC SGE1 SGF1 SGFC SGK1 SGL1 SS SS2 STA1 PD1S PD2S PD3S MD1S MD2S MD3S DG1S DG2S DG3S PD1M PD2M PD3M MD1M MD2M MD3M DG1M DG2M DG3M MVS MA MVM FILV IAM TA PVM PVS IAS SSTAT QPD1 QPD2 QPD3 QMD1 QMD2 QMD3 QDG1 QDG2 QDG3 QMA QTA QFILV QMV QPV QIA DERR DCNT QPK1 QSA1 PKS1 ASPEC1 H0C FE2XC ISSC RINC ISSN RDEN WDT1 RICSC CSSR G1R G2R ISSR SSR SS2R RATOR RATO13R RBORR RICSR RINR RIN13R RONE RPORR RTWOR |
| 8255XA | -0.792 | PTFS PTMS |
| 8255XA | -0.775 | SPF1 SPFQ TSCP TSDP |
| 8255XA | 0.000 | DTEM TEMP TNF |

Created by : RPM9, v5.3.1.0

Plotted by : PlotMgr, v5.4.504

Company : WPX ENERGY

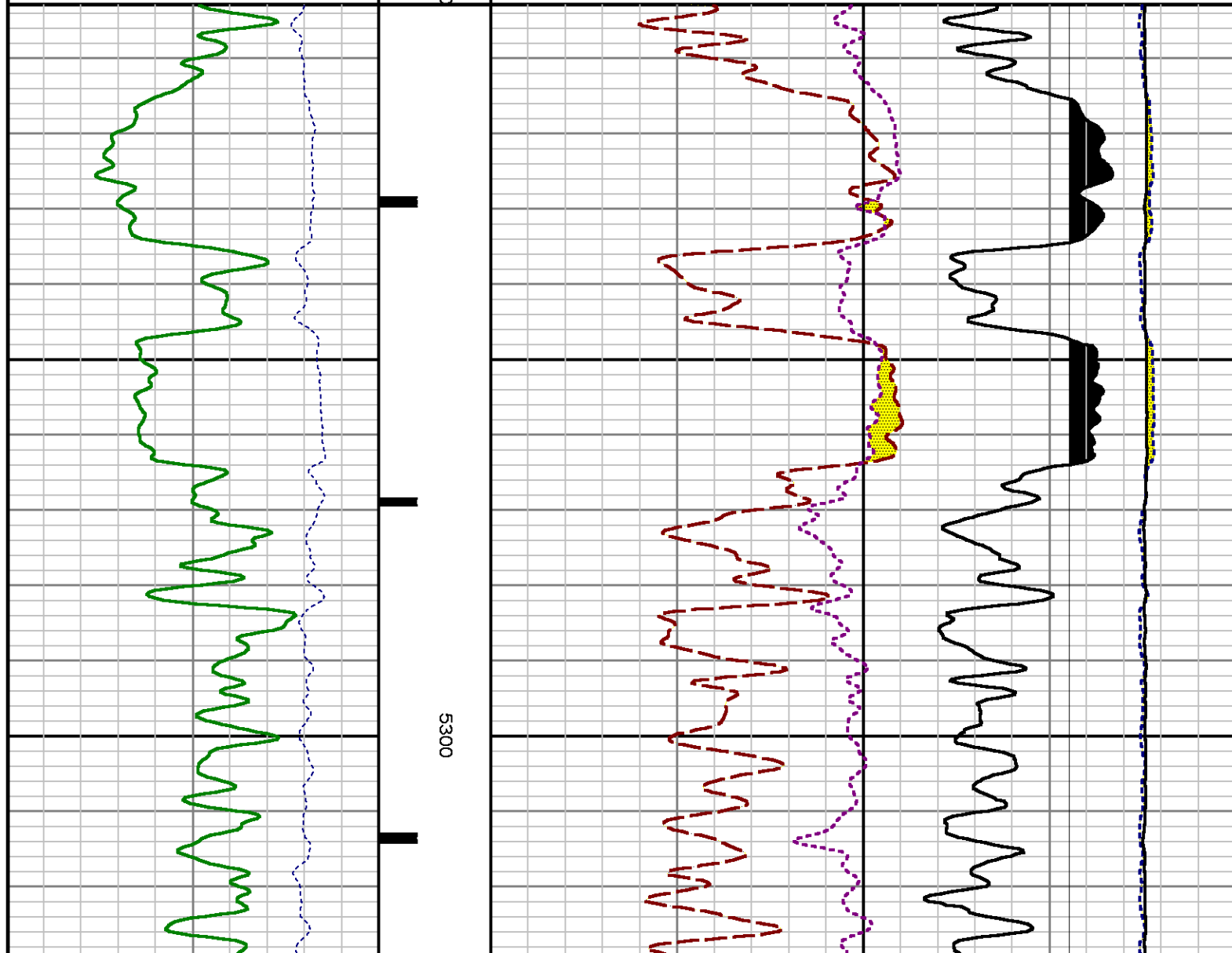
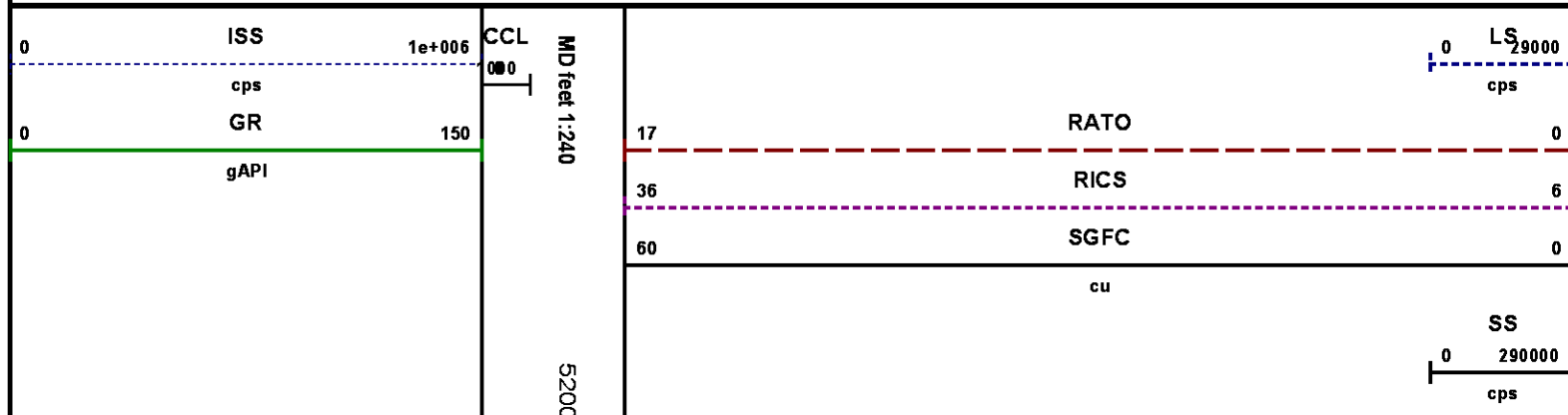
Well : C&C ENERGY GM 411-13

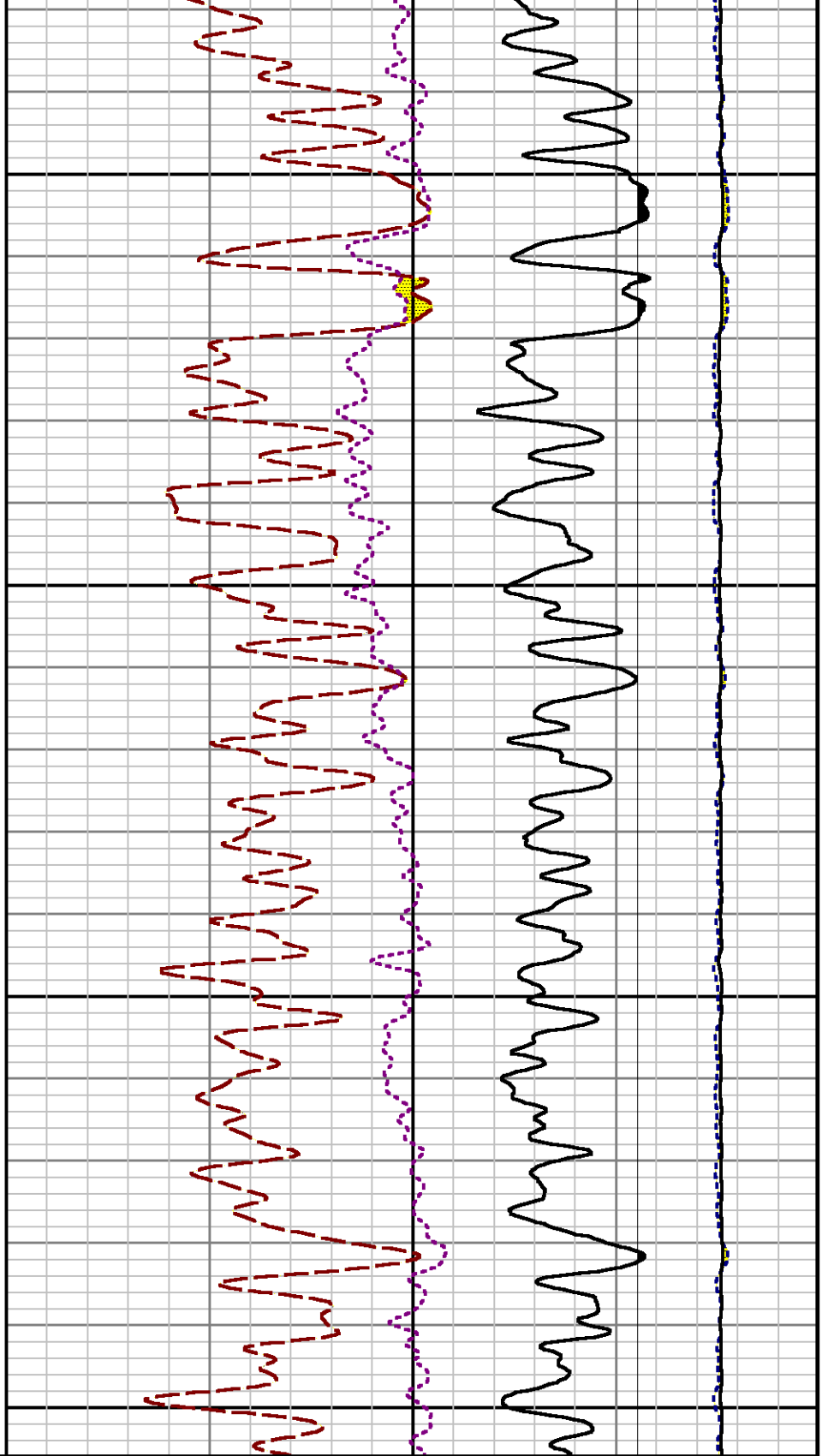
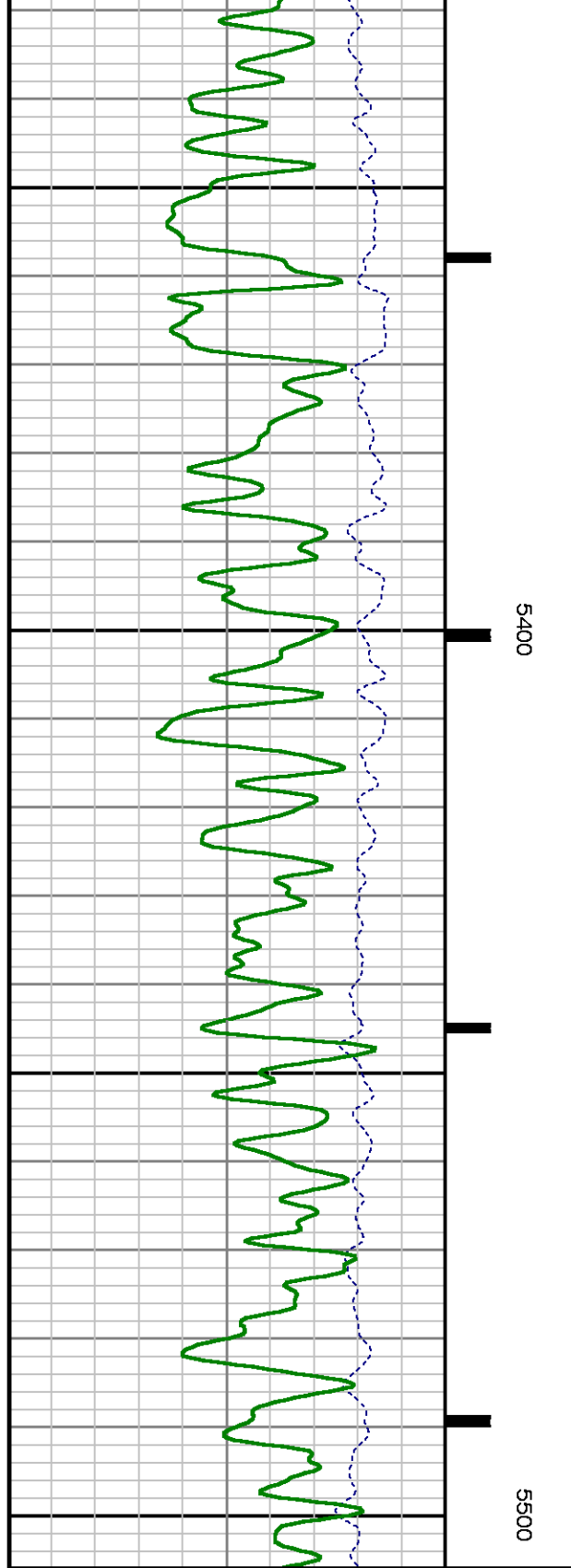
File Name : d:\welldata\wpx\gm 411-13\rpm411\repeat.xtf

Mode : PlotMgr 5.4.504

Interval : 5202.96 - 5506.00 feet UP

Created : 7/21/2014 8:30:34 AM





| | | | | |
|---|------|--------|-----|---------------|
| 0 | ISS | 1e+006 | CCL | MD feet 1:240 |
| | cps | | 000 | |
| 0 | GR | 150 | | |
| | gAPI | | | |

| | | | |
|----|------|----|--------|
| | | LS | 29000 |
| | | 0 | cps |
| 17 | RATO | | 0 |
| 36 | RICS | | 6 |
| 60 | SGFC | | 0 |
| | cu | | |
| | | SS | 290000 |
| | | 0 | cps |

CALIBRATION SUMMARY

GAMMA RAY

Calibration File: C:\case\calver\GR\38530.cal

CALIBRATION SUMMARY

DATE/TIME PERFORMED: Mon Jun 30 08:38:51 2014 TOOL SERIES: 2812LA ASSET: 385 SEQ: 30

| Calibrator # | Background [cps] | Calibrator On [cps] | Multiplicative | Background [api] | Calibrator On [api] | Differential [api] |
|--------------|------------------|---------------------|----------------|------------------|---------------------|--------------------|
| S2K WA-612 | 42.56 | 269.00 | 0.927 | 39.47 | 249.47 | 210.00 |

Verification File: C:\case\calver\GR\38530.VP

PRIMARY VERIFICATION

DATE/TIME PERFORMED: Mon Jun 30 08:42:33 2014 TOOL SERIES: 2812LA ASSET: 385 SEQ: 30

| Calibrator # | Background [cps] | Calibrator On [cps] | Multiplicative | Background [api] | Calibrator On [api] | Differential [api] |
|--------------|------------------|---------------------|----------------|------------------|---------------------|--------------------|
| S2K WA-612 | 41.56 | 270.56 | 0.927 | 38.54 | 250.91 | 212.37 |

PNC

Calibration File: C:\case\calver\PNC\383_02.cal

PNC 3D CALIBRATION SUMMARY

DATE/TIME PERFORMED: Wed Jul 02 11:12:40 2014 TOOL SERIES: 8281XA ASSET: 383 SEQ: 02

| Calibrator # | Source # |
|--------------|-----------------|
| shop shop | 8281AA 11710723 |

| | ISS | Mtr Vits (V) | SS Gain | LS Gain | XLS Gain | EA Temp (degF) | Sync Delay (usec) | RCAL |
|--------------|---------|--------------|---------|---------|----------|----------------|-------------------|--------|
| Raw Data | 815642 | 124.00 | 2273.00 | 2248.00 | 2207.00 | 113.01 | 7.00 | 0.9759 |
| Interpolated | 1300000 | 144.24 | 2253.89 | 2241.02 | 2201.12 | | | |

| | ISS | BKS | BKL | BKX | SGA1 | SDA1 | SGA2 | SDA2 |
|----------|--------|---------|--------|--------|-------------|-----------|-------------|-----------|
| Raw Data | 815642 | 6112.95 | 967.26 | 132.35 | 25.67 | 0.14 | 24.23 | 0.28 |
| | | | | | 25.35 26.40 | 0.00 0.20 | 23.60 24.80 | 0.00 0.40 |

| | ISS | ILS | IXS | SS | SS2 | LS | CSS | CLS |
|---------------|--------|-----------|----------|----------|----------|---------|----------|----------|
| Raw Data | 815642 | 169475.86 | 25875.63 | 90426.93 | 32216.52 | 8369.17 | 54781.47 | 13381.45 |
| Fit Quality % | | 1.33 | 1.32 | 0.94 | 0.94 | 1.26 | 0.85 | 1.23 |

| | ISS | RBOR | | RIN ISS/ILS | | RIN13 ISS/IXS | | RICS ISS/CSS | | RATO SS/LS | | RTWO SS2/LS | | RONE CSS/CLS | |
|---------------|---------|------|------|----------------|------|------------------|-------|-----------------|-------|---------------|-------|----------------|------|-----------------|------|
| Raw Data | 815642 | 1.43 | | 4.81 | | 31.52 | | 14.89 | | 10.81 | | 3.85 | | 4.09 | |
| | | 1.42 | 1.45 | 3.55 | 5.52 | 22.20 | 32.70 | 10.99 | 16.34 | 10.06 | 11.10 | 3.57 | 3.95 | 3.76 | 4.22 |
| Fit Quality % | | 0.06 | | 0.19 | | 0.13 | | 0.07 | | 0.26 | | 0.22 | | 0.23 | |
| Reduced | 1383476 | 1.43 | | 4.82 | | 31.60 | | 14.95 | | 10.76 | | 3.84 | | 4.08 | |
| | | 1.42 | 1.45 | 4.33 | 5.52 | 27.60 | 32.70 | 13.70 | 16.34 | 10.06 | 11.10 | 3.57 | 3.95 | 3.76 | 4.22 |

TEMPERATURE

Calibration File: C:\case\calver\TEMP\120516AU.cal

CALIBRATION SUMMARY

DATE/TIME PERFORMED: 09 AUG 2010 TOOL SERIES: 8255XA ASSET: 120516 SEQ: AU

| | T(0) | T(1) | T(2) | T(3) | T(4) | T(5) |
|--------------|----------------|---------------|---------------|----------------|---------------|---------------|
| Coefficients | -8.673169e+000 | 9.576065e-002 | 6.395448e-006 | -9.461013e-010 | 0.000000e+000 | 0.000000e+000 |

TOOL DIAGRAM

OTA SHORT CABLE HEAD

PCM POWER SUPPLY

Series 8250EA
Mnemonic PCM
Diameter 1.70"
Weight 18.00 lb
Length 3.86'
Temp Rating 350.00 °F

TELEMETRY / CCL

Series 8248EA
Mnemonic PCM
Diameter 1.70"
Weight 20.00 lb

29.93'

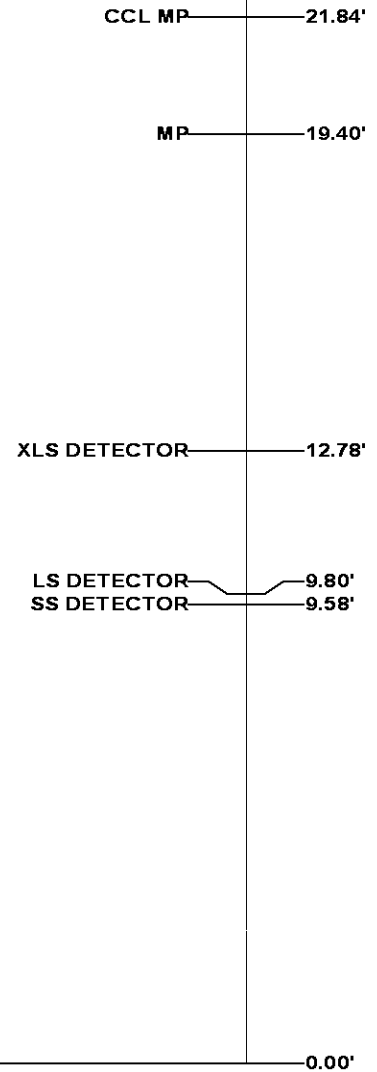
Length 4.46'
 Measure Point 1.00' CCL MP
 Temp Rating 350.00 °F
 Press Rating 15000.00 PSI

SONDEX GAMMA RAY

Series 2812LA
 Mnemonic SNDX
 Diameter 1.69"

RESERVOIR PERFORMANCE MONITOR

Series 8281XA
 Mnemonic RPM
 Diameter 1.70"
 Weight 75.00 lb
 Length 18.58'
 Measure Point 9.49' SS DETECTOR
 Measure Point 9.72' LS DETECTOR
 Measure Point 12.69' XLS DETECTOR
 Temp Rating 350.00 °F
 Press Rating 20000.00 PSI



Total Length: 29.93'
Total Weight: Not Available
Max Diameter: 0' 1.70"



Baker Atlas



Company WPX ENERGY
Well C&C ENERGY GM 411-13
Field GRAND VALLEY
County GARFIELD **State** COLORADO

File No:
 CH087685
API No:
 05045222630000

Location
 SHL: 280' FSL & 994' FWL (SEC 12)
 BHT: 898' FNL & 823' FWL (SWNW SEC 13)
 SEC 13 TWP 7S RGE 96W

Elevations
 KB 5165 ft
 DF
 GL 5141 ft

13 7S 96W
 GM 24-12 PAD
 H&P 318