

1801 Broadway  
Suite 500  
Denver, Colorado 80202



Callie Fiddes  
Regulatory Technician  
Tel: 303.398.0550  
E-mail: cfiddes@gwogco.com

September 29, 2014

Colorado Oil and Gas Conservation Commission  
1120 Lincoln Street, Suite 801  
Denver, Colorado 80203

RE: **Proposed Wellbore Spacing Unit**  
Willow Bend LD 18-361HN

Niobrara New Drill  
Township 1 South, Range 67 West, 6<sup>th</sup> P.M.  
Section 18: Whole section  
Adams County, Colorado

Dear Director:

Great Western Operating Company, LLC is planning to drill the above captioned well in accordance with the provisions of COGCC Rule 318A.e.

Great Western proposed wellbore spacing unit consists of:

- **E2E2 Sec 18 & W2W2 Sec 17**

The 30 day notification time has passed and we have resolved any objections to such well locations or proposed spacing unit, therefore Great Western hereby requests the Director to approve the above mentioned well. Great Western Operating Company, LLC respectfully requests that the COGCC review the enclosed map illustrating the proposed wellbore spacing unit.

Respectfully,

*Callie Fiddes*

Callie Fiddes  
Regulatory Technician  
Great Western Operating Company, LLC

# T1S, R67W, 6th P.M.

## GREAT WESTERN OIL & GAS COMPANY

**R R**  
Alum. Cap.  
6867 in Range Box  
Lat: 38.971942°  
Long: 104.940281°

Mag Nail in  
Asphalt Shoulder  
Lat: 38.971911°  
Long: 104.931408°

2013 Alum. Cap.  
#38304, 0.8' Below  
Ground in Range Box  
Lat: 38.971875°  
Long: 104.922000°

Well location, WILLOW BEND LD 18-361HN, located as shown in the NE 1/4 NE 1/4 of Section 18, T1S, R67W, 6th P.M., Adams County, Colorado.

### BASIS OF ELEVATION

BENCHMARK JR 53 5026 LOCATED IN THE SW 1/4 SE 1/4 OF SECTION 18, T1N, R68W, 6th P.M., TAKEN FROM 1988 PUBLISHED DATUM BY THE UNITED STATES DEPARTMENT OF THE INTERIOR, GEOLOGICAL SURVEY AS BEING 5028 FEET.

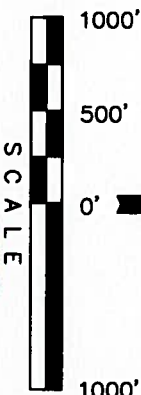
### BASIS OF BEARINGS

BASIS OF BEARINGS IS A G.P.S. OBSERVATION.

### LEGEND:

- = 90° SYMBOL
- = PROPOSED WELL HEAD.
- = PROPOSED TARGET BOTTOM HOLE.
- ◇ = PROPOSED ENTRY POINT.
- ▲ = SECTION CORNERS LOCATED.

LINE TABLE		
LINE	DIRECTION	LENGTH
L1	S74°50'21"E	482.10'

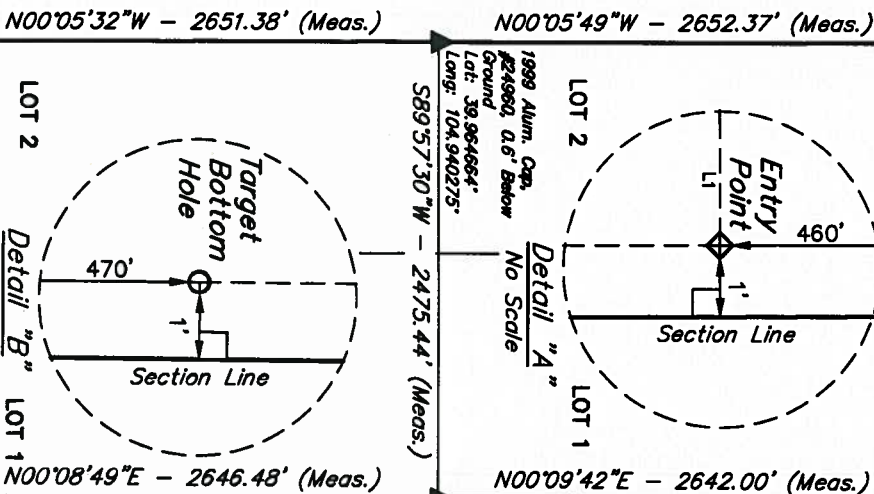


### CERTIFICATE

THIS IS TO CERTIFY THAT THE ABOVE DATA WAS PREPARED FROM FIELD NOTES OF ACTUAL SURVEY MADE BY ME OR UNDER MY SUPERVISION AND THAT THE SAME ARE TRUE AND CORRECT TO THE BEST OF MY KNOWLEDGE AND BELIEF.

REGISTERED LAND SURVEYOR  
REGISTRATION NO. 28285  
STATE OF UTAH  
JUL 12 2013

WAL LAND SURVEY



18

WILLOW BEND  
LD 18-361HN  
Elev. Ungraded  
Ground = 5232'

See Detail "A"

500°10'47"W - 4329.50'  
(To Target Bottom Hole)  
N00°10'43"E  
1314.58' (Meas.)

N00°11°02"E  
1315.08' (Meas.)

S89°56'35"W - 2637.07' (Meas.)

1999 Alum. Cap.  
#24960  
Lat: 38.964658°  
Long: 104.931447°

2013 Alum. Cap.  
#38304, 0.8' Below  
Ground in Broken  
Range Box  
Lat: 38.964656°  
Long: 104.922042°

See Detail "B"

Target  
Bottom  
Hole

N00°05'32"W - 2651.38' (Meas.)  
N00°08'49"E - 2646.48' (Meas.)  
S89°57'30"W - 2475.44' (Meas.)

Detail "B"

No Scale

S89°50'24"W  
1146.68' (Meas.)  
2013 Alum. Cap.  
#38304, 0.5' Below  
Ground in Range Box  
Lat: 38.957386°  
Long: 104.940272°

2002 Alum. Cap.  
#22269, 1.0' Below  
Ground  
Lat: 38.957392°  
Long: 104.936183°

S89°34'54"W - 2635.71' (Meas.)  
NAD 83 (ENTRY POINT)  
LATITUDE = 38°57'31.43" (38.958731)  
LONGITUDE = 104°55'19.49" (104.922081)  
NAD 27 (ENTRY POINT)  
LATITUDE = 38°57'31.48" (38.958744)  
LONGITUDE = 104°55'17.57" (104.921547)

PDOP = 1.1

UTAH ENGINEERING & LAND SURVEYING  
86 SOUTH 200 EAST - VERNAL, UTAH 84078  
(435) 789-1017

SCALE  
1" = 1000'

DATE SURVEYED: 11-12-13  
DATE DRAWN: 11-22-13

PARTY  
BRETT LOWREY A.F. J.W.

REFERENCES  
G.L.O. PLAT

WEATHER  
COOL

FILE  
GREAT WESTERN OIL  
& GAS COMPANY