

WPX ENERGY ROCKY MOUNTAIN LLC-EBUS

GM 11-13

H&P 318

Post Job Summary

Cement Surface Casing

Date Updated: 09/27/2014
Job Date: 07/07/2014

Submitted by: Kory Hugentobler – Grand Junction Cement Engineer

The Road to Excellence Starts with Safety

Sold To #: 300721	Ship To #: 3273394	Quote #:0021872993	Sales Order #: 0901489715
Customer: WPX ENERGY ROCKY MOUNTAIN LLC-EBUS		Customer Rep: W.C Wilson	
Well Name: C&C ENERGY	Well #: GM 11-13	API/UWI #: 05-045-22271-00	
Field: GRAND VALLEY	City (SAP): PARACHUTE	County/Parish: GARFIELD	State: COLORADO
Legal Description: SW SW-12-7S-96W-297FSL-976FWL			
Contractor: H & P DRLG		Rig/Platform Name/Num: H&P 318	
Job BOM: 7521			
Well Type: DIRECTIONAL GAS			
Sales Person: HALAMERICA\HB50180		Srvc Supervisor: Carlton Kukus	

Job

Formation Name			
Formation Depth (MD)	Top		Bottom
Form Type	BHST		
Job depth MD	1044ft	Job Depth TVD	1044ft
Water Depth	Wk Ht Above Floor		
Perforation Depth (MD)	From		To

Well Data

Description	New / Used	Size in	ID in	Weight lbm/ft	Thread	Grade	Top MD ft	Bottom MD ft	Top TVD ft	Bottom TVD ft
Casing	New	9.625	9.001	32.3	8 RD	J-55	0	1044		1044
Open Hole Section			13.5				0	1044		1044

Tools and Accessories

Type	Size in	Qty	Make	Depth ft	Type	Size in	Qty	Make
Guide Shoe				1044	Top Plug	9.625	1	HES
Float Shoe					Bottom Plug			
Float Collar				999.68	SSR plug set			
Insert Float					Plug Container	9.625	1	HES
Stage Tool					Centralizers			

Miscellaneous Materials

Gelling Agt	Conc	Surfactant	Conc	Acid Type	Qty	Conc
Treatment Fld	Conc	Inhibitor	Conc	Sand Type	Size	Qty

Fluid Data

Stage/Plug #: 1										
Fluid #	Stage Type	Fluid Name	Qty	Qty UoM	Mixing Density lbm/gal	Yield ft3/sack	Mix Fluid Gal	Rate bbl/min	Total Mix Fluid Gal	
1	Fresh Water Spacer	Fresh Water Spacer	20	bbl	8.34			4.0		
Fluid #	Stage Type	Fluid Name	Qty	Qty UoM	Mixing Density lbm/gal	Yield ft3/sack	Mix Fluid Gal	Rate bbl/min	Total Mix Fluid Gal	

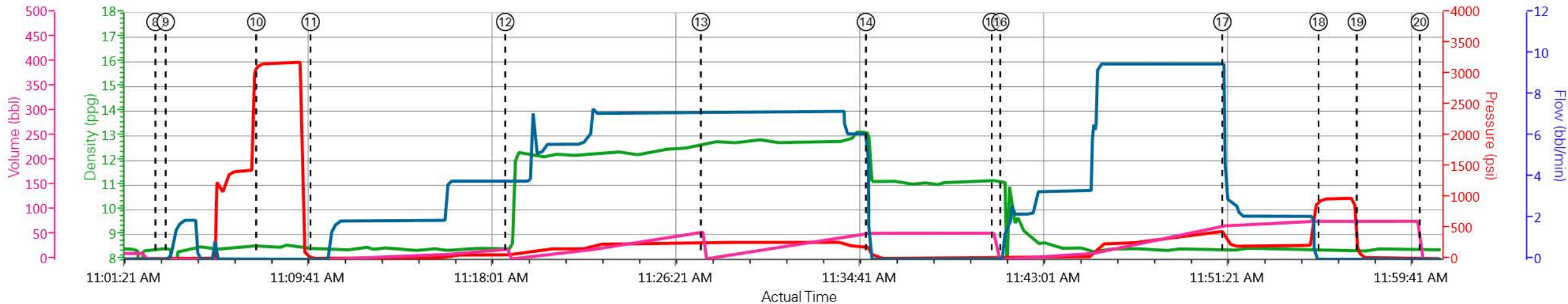
2	VariCem GJ1	VARICEM (TM) CEMENT	108	sack	12.3	2.38		7.0	13.77	
13.77 Gal		FRESH WATER								
Fluid #	Stage Type	Fluid Name	Qty	Qty UoM	Mixing Density lbm/gal	Yield ft³/sack	Mix Fluid Gal	Rate bbl/mi n	Total Mix Fluid Gal	
3	VariCem GJ1	VARICEM (TM) CEMENT	160	sack	12.8	2.11		7.0	11.77	
11.71 Gal		FRESH WATER								
Fluid #	Stage Type	Fluid Name	Qty	Qty UoM	Mixing Density lbm/gal	Yield ft³/sack	Mix Fluid Gal	Rate bbl/mi n	Total Mix Fluid Gal	
4	Fresh Water Displacement	Fresh Water Displacement	78.6	bbl	8.34			9.6		
Cement Left In Pipe		Amount	44 ft		Reason			Shoe Joint		
Comment 14 BBL CEMENT TO SURFACE										

3.1 Job Event Log

Type	Seq. No.	Graph Label	Date	Time	Source	DH Density (ppg)	PS Pump Press (psi)	Pump Stg Tot (bbl)	Comb Pump Rate (bbl/min)	Comment
Event	1	Call Out	7/7/2014	04:30:00	USER					HES CREW CALLED OUT AND ROLLED FROM ANOTHER JOB
Event	2	Pre-Convoy Safety Meeting	7/7/2014	05:00:00	USER					ALL HES CREW MEMBERS
Event	3	Arrive At Loc	7/7/2014	06:30:00	USER					HES ARRIVED ON TIME
Event	4	Assessment Of Location Safety Meeting	7/7/2014	06:45:03	USER					RIG WAS RIGGING UP CASING CREW, HES WAITED FOR RIG TO FINISH CASING BEFORE SPOTTING AND RIGGING UP
Event	5	Pre-Rig Up Safety Meeting	7/7/2014	07:06:07	USER					ALL HES CREW
Event	6	Rig-Up Equipment	7/7/2014	07:06:12	USER					RIG UP IRON UP TO THE FLOOR, BULK TRUCK UP TO THE PUMP TRUCK AND WATER HOSES TO THE UPRIGHT
Event	7	Pre-Job Safety Meeting	7/7/2014	07:06:40	USER					ALL HES AND RIG CREW
Event	8	Start Job	7/7/2014	11:02:54	COM5	8.43	1.00	0.0	0.00	TD: 1043.7FT TP: 1043.7FT SJ: 44.02 OH: 13.5 CSG: 9.625 32.3# J-55 MUD WT: 9.8
Event	9	Fill Lines	7/7/2014	11:03:22	COM5	8.38	25	2	2	FILL LINES TO PRESSURE TEST
Event	10	Test Lines	7/7/2014	11:07:28	COM5	8.56	3179	2.1	0.00	PRESSURE TEST LINES TO 3000 PSI, PRESSURE TEST OK
Event	11	Fresh Water Spacer	7/7/2014	11:09:56	COM5	8.48	74	20	4	20 BBL FRESH WATER SPACER
Event	12	Pump Lead Cement	7/7/2014	11:18:45	COM5	12.3	250	55	7	108 SKS OF VARICEM CEMENT 12.3PPG 2.38YIELD 13.77GAL/SK WEIGHT OF CEMENT VERIFIED VIA MUD SCALES THROUGHOUT LEAD CEMENT
Event	13	Pump Tail Cement	7/7/2014	11:27:37	COM5	12.8	276	52	7	160 SKS OF VARICEM CEMENT 12.8PPG 2.11YIELD 11.77GAL/SK WEIGHT OF CEMENT VERIFIED VIA MUD SCALES THROUGHOUT TAIL CEMENT
Event	14	Shutdown	7/7/2014	11:35:06	USER	13.09	0	52.7	0	SHUTDOWN END OF CEMENT, HES WASHED UP ON TOP OF PLUG
Event	15	Drop Plug	7/7/2014	11:40:48	USER	11.21	0	0	0.00	PLUG AWAY NO PROBLEMS
Event	16	Pump Displacement	7/7/2014	11:41:11	COM5	8.34	425	68	9.6	FRESH WATER DISPLACEMENT
Event	17	Slow Rate	7/7/2014	11:51:15	USER	8.34	367.00	10	4	SLOW RATE TO BUMP THE PLUG
Event	18	Bump Plug	7/7/2014	11:55:36	USER	8.37	345	78	0.00	BUMPED PLUG AT 345 PSI TOOK TO 989 PSI

Event	19	Check Floats	7/7/2014	11:57:20	USER	8.37	989	78	0.00	FLOATS HELD .5 BBLS BACK TO TANKS
Event	20	End Job	7/7/2014	12:00:12	COM5	8.36	9.00	0.0	0.00	THANK YOU FOR CHOOSING HALLIBURTON CEMENT CARL KUKUS AND CREW
Event	21	Post-Job Safety Meeting (Pre Rig-Down)	7/7/2014	12:05:12	USER					ALL HES CREW
Event	22	Rig Down Lines	7/7/2014	12:15:00	USER					RIG DOWN ALL LINES AND PUT AWAY
Event	23	Pre-Convoy Safety Meeting	7/7/2014	12:45:00	USER					ALL HES CREW
Event	24	Crew Leave Location	7/7/2014	13:00:00	USER					1-F-550 PICKUP, 1-ELITE PUMP TRUCK, 1-660 BULK TRUCK

WPX/C&C ENERGY GM 11-13/901489715



— DH Density (ppg)
 — PS Pump Press (psi)
 — Pump Stg Tot (bbl)
 — Comb Pump Rate (bbl/min)

- | | | |
|---|--------------------------------------|--|
| ① Call Out n/a;n/a;n/a;n/a | ⑨ Fill Lines 8.38;1;0;0 | ⑰ Slow Rate 8.33;353;68.1;3 |
| ② Pre-Convoy Safety Meeting n/a;n/a;n/a;n/a | ⑩ Test Lines 8.56;3150;2.1;0 | ⑱ Bump Plug 8.37;960;76.9;0 |
| ③ Arrive At Loc n/a;n/a;n/a;n/a | ⑪ Fresh Water Spacer 8.48;17;0;0 | ⑲ Check Floats 8.37;92;76.9;0 |
| ④ Assessment Of Location Safety Meeting n/a;n/a;n/a;n/a | ⑫ Pump Lead Cement 8.41;73;0.1;3.8 | ⑳ End Job 8.36;9;0;0 |
| ⑤ Pre-Rig Up Safety Meeting n/a;n/a;n/a;n/a | ⑬ Pump Tail Cement 12.66;253;0.2;7.1 | ㉑ Post-Job Safety Meeting (Pre Rig-Down) n/a;n/a;n/a;n/a |
| ⑥ Rig-Up Equipment n/a;n/a;n/a;n/a | ⑭ Shutdown 12.91;145;52.7;0 | ㉒ Rig Down Lines n/a;n/a;n/a;n/a |
| ⑦ Pre-Job Safety Meeting n/a;n/a;n/a;n/a | ⑮ Drop Plug 11.19;10;52.7;0 | ㉓ Pre-Convoy Safety Meeting n/a;n/a;n/a;n/a |
| ⑧ Start Job 8.43;1;0;0 | ⑯ Pump Displacement 11.14;10;0;0 | ㉔ Crew Leave Location n/a;n/a;n/a;n/a |

▼ **HALLIBURTON** | iCem® Service

Created: 2014-07-07 07:01:31, Version: 3.0.121

[Edit](#)

Customer: WPX ENERGY ROCKY MOUNTAIN LLC-EBUS

Job Date: 7/7/2014 10:17:35 AM

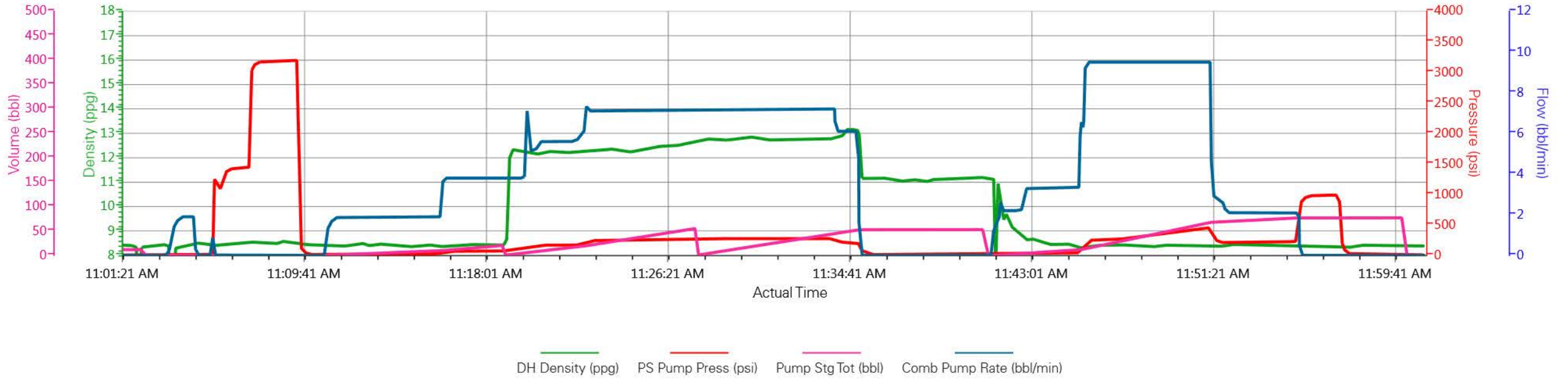
Well: C&C ENERGY GM 11-13

Representative: W.C. Wilson

Sales Order #: 901489715

Supervisor/Operator: Carlton Kukus/Dan Sinclair E-3

WPX/C&C ENERGY GM 11-13/901489715



HALLIBURTON

Water Analysis Report

Company: WPX

Submitted by: Carl Kukus

Attention: J.Trout

Lease C&C Energy

Well # GM 11-13

Date: 7/7/2014

Date Rec.: 7/7/2014

S.O.# 901489715

Job Type: Surface

Specific Gravity	<i>MAX</i>	1
pH	<i>8</i>	7
Potassium (K)	<i>5000</i>	200 Mg / L
Calcium (Ca)	<i>500</i>	120 Mg / L
Iron (FE2)	<i>300</i>	3 Mg / L
Chlorides (Cl)	<i>3000</i>	0 Mg / L
Sulfates (SO ₄)	<i>1500</i>	200 Mg / L
Chlorine (Cl ₂)		0 Mg / L
Temp	<i>40-80</i>	67 Deg
Total Dissolved Solids		250 Mg / L

Respectfully: Carl Kukus

Title: CEMENTING SUPERVISOR

Location: Grand Junction, CO

NOTICE:

This report is limited to the described sample tested. Any person using or relying on this report agrees that Halliburton shall not be liable for any loss or damage whether due to act or omission resulting from such report or i