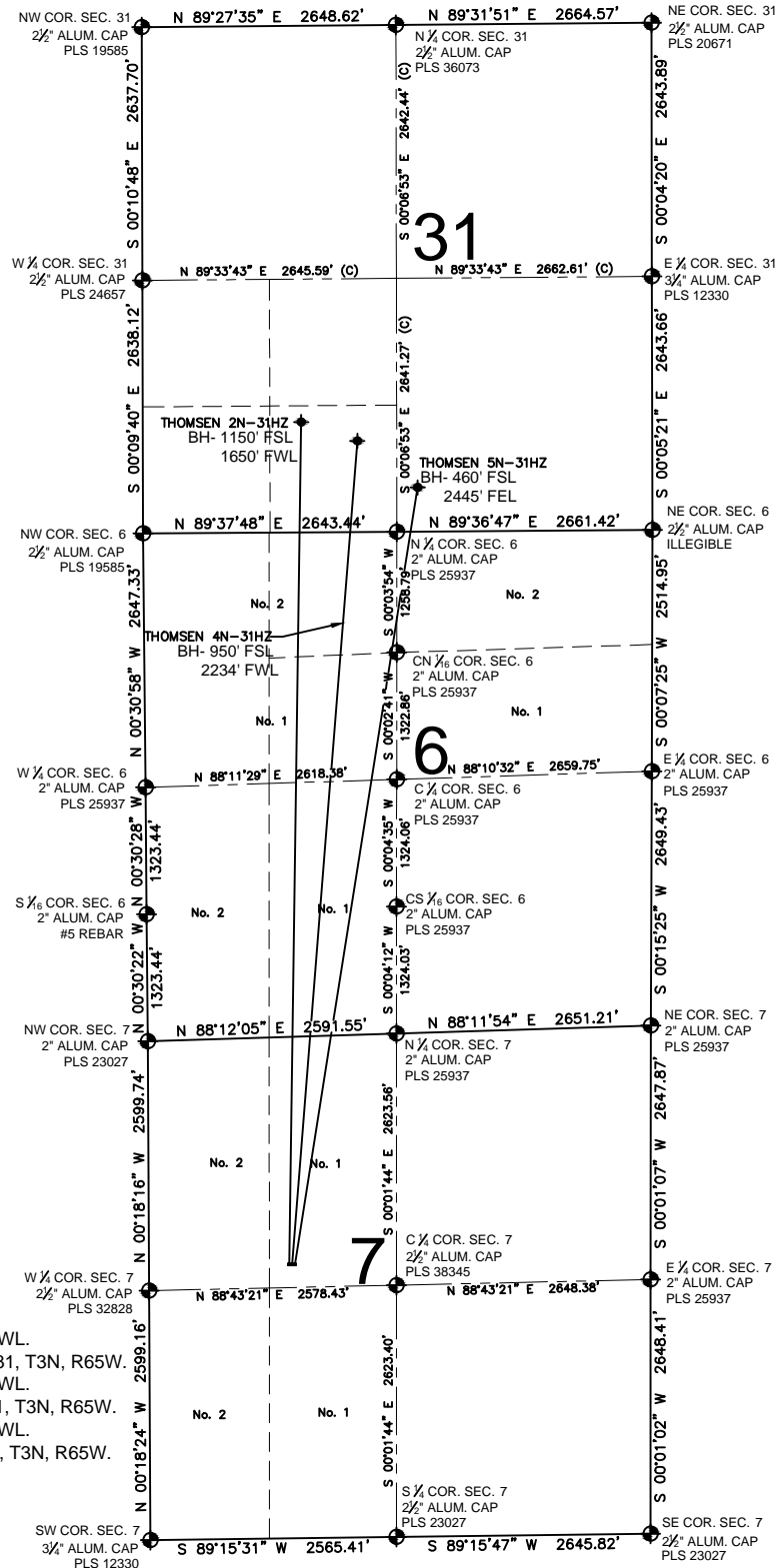


THOMSEN 4N-31HZ MULTI-WELL PLAN

SECTION 7, TOWNSHIP 2 NORTH, RANGE 65 WEST, 6TH P.M.



LEGEND

- = EXISTING MONUMENT
- = PROPOSED WELL
- ◆ = BOTTOM HOLE
- ◆ = EXISTING WELL
- BH= BOTTOM HOLE

NOTES:

THOMSEN 2N-31HZ TO BE AT 2370' FNL, 1461' FWL.
 BOTTOM HOLE AT 1150' FSL & 1650' FWL, SEC. 31, T3N, R65W.
 THOMSEN 4N-31HZ TO BE AT 2371' FNL, 1491' FWL.
 BOTTOM HOLE AT 950' FSL & 2234' FWL, SEC. 31, T3N, R65W.
 THOMSEN 5N-31HZ TO BE AT 2371' FNL, 1521' FWL.
 BOTTOM HOLE AT 460' FSL & 2445' FEL, SEC. 31, T3N, R65W.

PREPARED BY:



7535 Hilltop Circle
 Denver, CO 80221

KERR-MCGEE OIL & GAS ONSHORE LP

FIELD DATE:

06-24-14

DRAWING DATE:

06-30-14

SURFACE LOCATION:

LOT 1, NW 1/4, SEC. 7, T2N, R65W, 6TH P.M.
 WELD COUNTY, COLORADO

