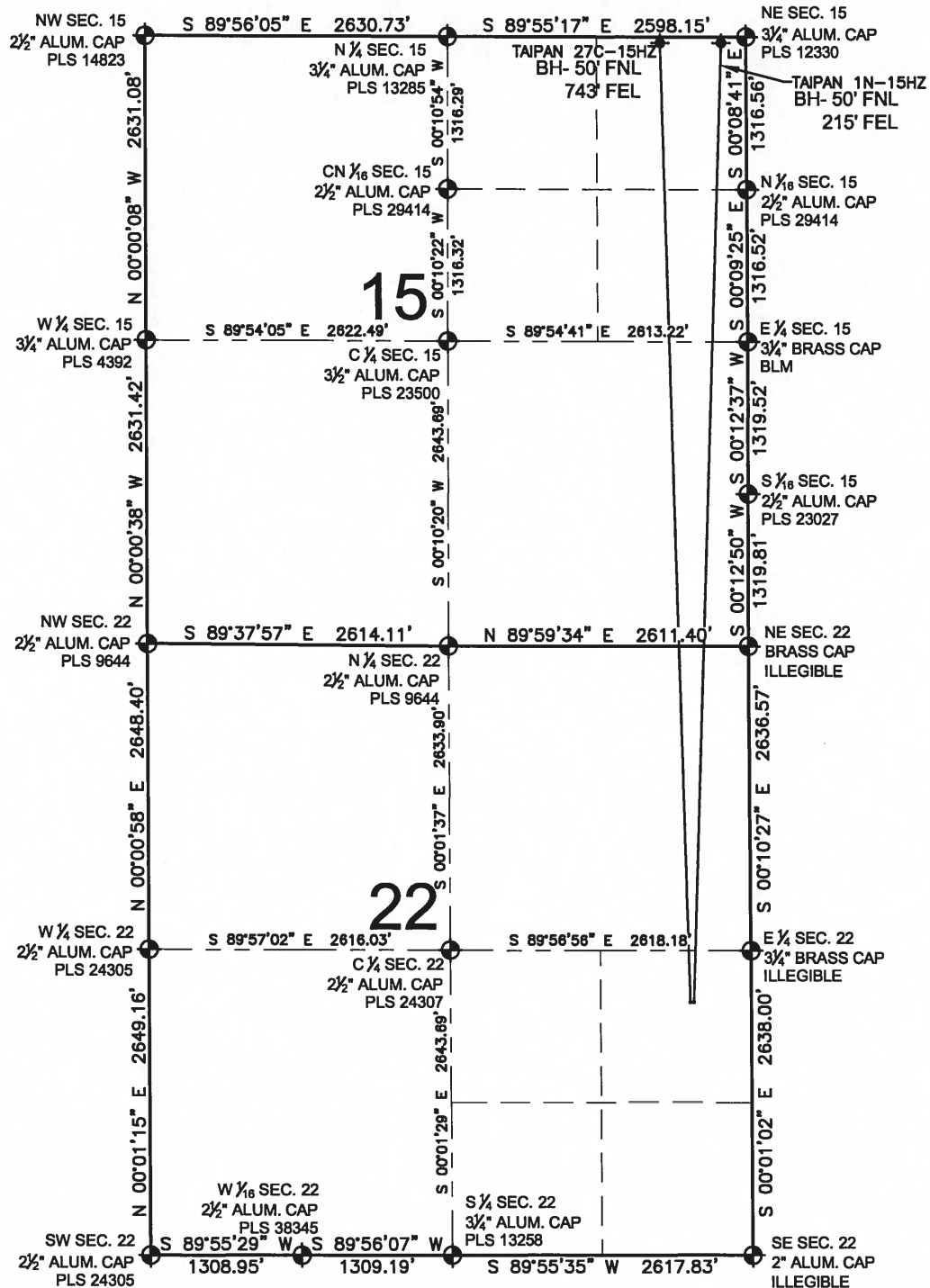


TAIPAN 27C-15HZ MULTI-WELL PLAN

SECTION 22, TOWNSHIP 2 NORTH, RANGE 67 WEST, 6TH P.M.



LEGEND

- ⊕ = EXISTING MONUMENT
- = PROPOSED WELL
- ⬮ = BOTTOM HOLE
- ◆ = EXISTING WELL
- BH = BOTTOM HOLE

NOTES:
TAIPAN 27C-15HZ TO BE AT 2192' FSL, 530' FEL.
BOTTOM HOLE AT 50' FNL & 743' FEL, SEC 15
TAIPAN 1N-15HZ TO BE AT 2192' FSL, 500' FEL.
BOTTOM HOLE AT 50' FNL & 215' FEL, SEC 15

PREPARED BY:

PFS

Petroleum Field Services, LLC.
7535 Hilltop Circle
Denver, CO 80221

KERR-MCGEE OIL & GAS ONSHORE LP

FIELD DATE:
07-18-13

DRAWING DATE:
12-02-13

SURFACE LOCATION:

NE 1/4 SE 1/4, SEC. 22, T2N, R67W, 6TH P.M.
WELD COUNTY, COLORADO

