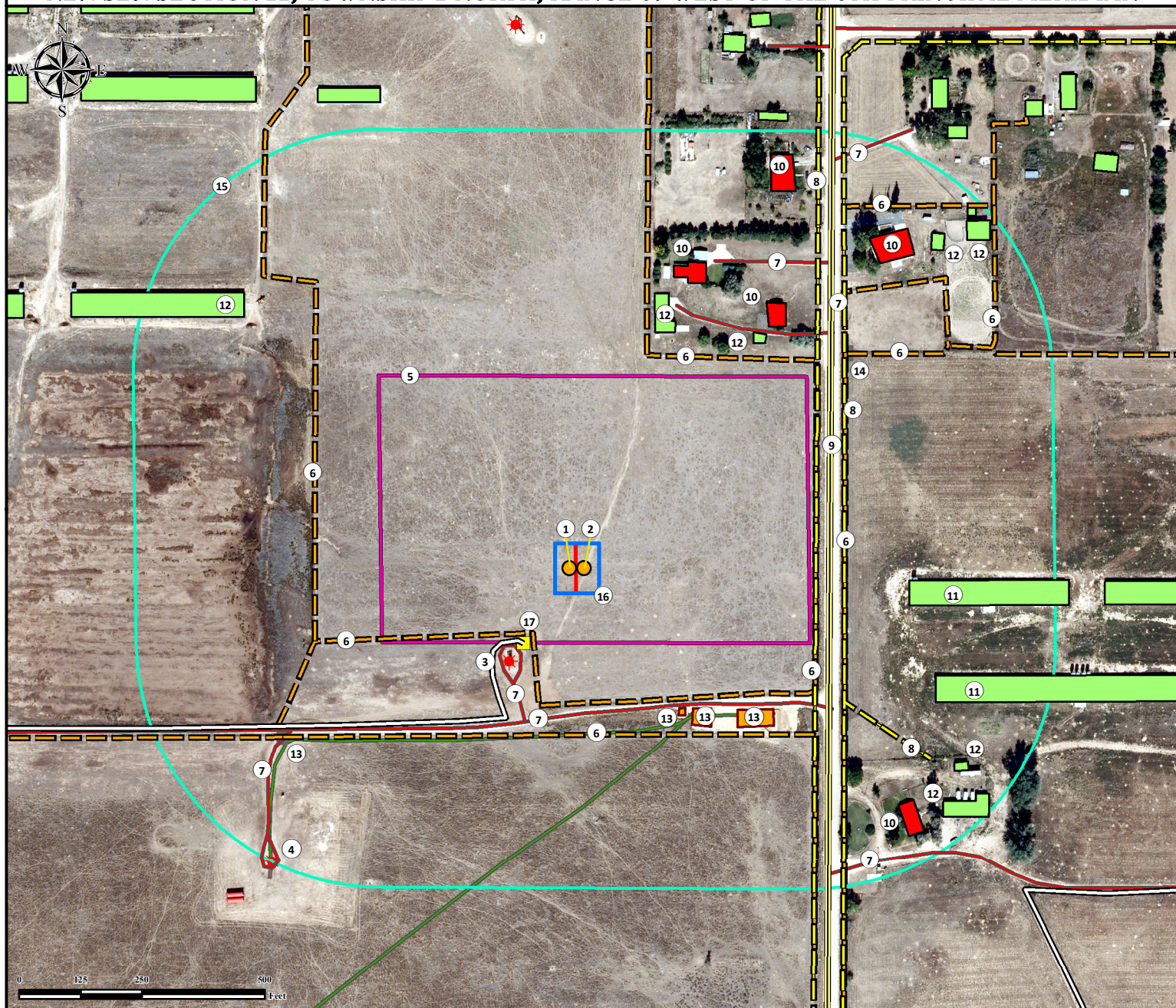


# Location Drawing

## TAIPAN 27C-15HZ

### Horizontal Multi Well Pad

**NE¼ SE¼ SECTION 22, TOWNSHIP 2 NORTH, RANGE 67 WEST OF THE 6TH PRINCIPAL MERIDIAN**



1. Proposed Well TAIPAN 27C-15HZ.
2. Proposed Well TAIPAN 1N-15HZ.
3. Existing Well SIDNEY STREAR 2 is ±226' SW.
4. Existing Well PREMIUM TURKEY FARMS UNIT A 1 is ±850' SW.
5. Operational Disturbance Area.
6. Fences are ±152' SW, ±338' S, ±461' NE, ±501' E, ±519' W, ±560' E, ±711' NE, and ±970' NE.

7. Private Roads are ±194' SW, ±296' S, ±573' NE, ±652' SW, ±693' NE, ±819' SE, and ±989' NE.
8. Powerlines are ±502' E, ±559' E, and ±621' SE.
9. County Road 21 is ±534' E.
10. Building Units are ±629' NE, ±637' NE, ±824' SE, ±872' NE, and ±886' NE.
11. Demolished Buildings are ±691' E and ±777' SE.

12. Buildings are ±510' NE, ±591' NE, ±838' NW, ±876' SE, ±896' SE, ±981' NE, ±1049' NE, and ±1084' NE.
13. Existing Facilities are ±361' SE, ±379' SE, and ±446' SE.
14. Gate is ±678' SW.
15. 500' Radius.
16. Pump Jack Operations Area.
17. Utility Box is ±179' SW.

#### Legend

- Proposed Well
- ★ Existing Well
- Gate
- Utility Box
- 500' Radius
- Disturbance Area
- Pump Jack Operations Area
- Building Unit

- Building
- Facility Enclosure
- Fence
- Underground Electric Line
- Private Road
- Public Road
- Pipeline
- Powerline

#### Reference Location

\*\* All measurements are made from Reference Well TAIPAN 27C-15HZ \*\*  
**Lat: 40.122436° Long: -104.869334° (NAD83)**  
**Elevation: 4998 Feet**

Surface Use: Dry Land Crop

Nearest Building Unit: ±629' NE

Prepared for:

**Anadarko**  
Petroleum Corporation

**KERR-MCGEE OIL & GAS ONSHORE LP**



*Use our resources to find yours!*  
[www.petro-fs.com](http://www.petro-fs.com)  
**(303) 928-7128**

Field Date: 07/18/2013  
 Drafting Date: 03/22/2014  
 Drafter: DRF  
 Revision: 2

#### Data Sources:

- Aerial courtesy of Anadarko Petroleum Corporation (2010)