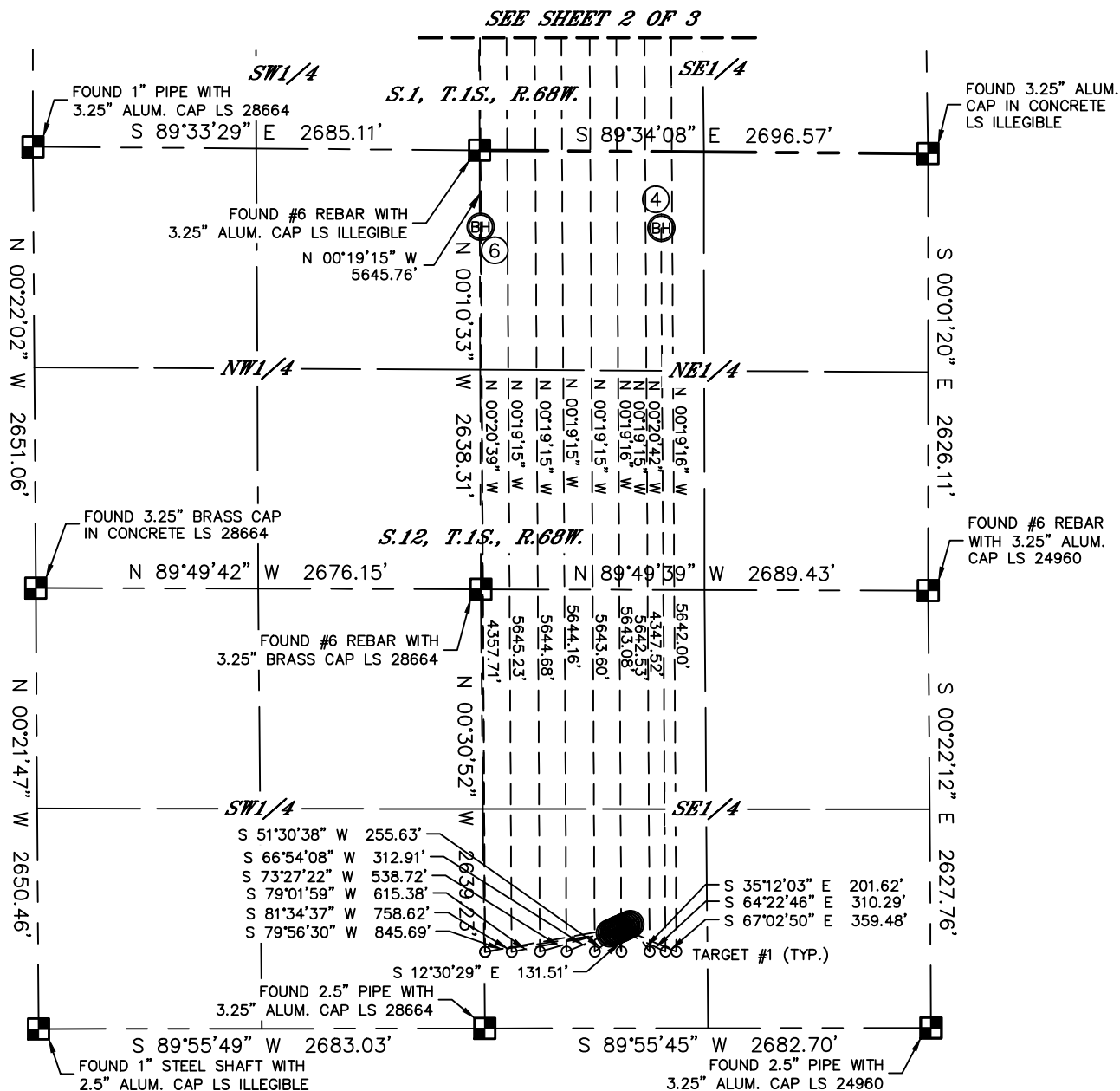


MULTI-WELL PLAN

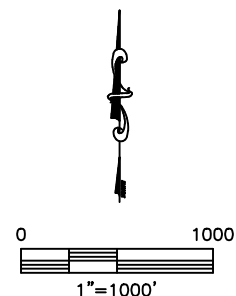
ALICIA HZ PAD

THIS MAP DOES NOT REPRESENT A BOUNDARY SURVEY

SECTION: 12
TOWNSHIP: 1S
RANGE: 68W



SH# W-E	BH#	WELL NAME	BHL FOOTAGE				BHL LAT °	BHL LONG °	1/4/1/4
1	6	ALICIA 12-15H-6C	460	FNL	2690	FEL	39.98520	-104.94983	NWNE
2	1	ALICIA 12-15H-1N	829	FSL	2522	FEL	39.98873	-104.94925	SWSE
3	5	ALICIA 12-15H-5N	831	FSL	2192	FEL	39.98872	-104.94808	SWSE
4	2	ALICIA 12-15H-2N	833	FSL	1863	FEL	39.98872	-104.94690	SWSE
5	4	ALICIA 12-15H-4C	460	FNL	1605	FEL	39.98516	-104.94596	NWNE
6	3	ALICIA 12-15H-3N	835	FSL	1533	FEL	39.98871	-104.94572	SWSE
7	7	ALICIA 12-15H-7NB	828	FSL	2682	FEL	39.98874	-104.94982	SWSE
8	8	ALICIA 12-15H-8NB	830	FSL	2352	FEL	39.98873	-104.94865	SWSE
9	9	ALICIA 12-15H-9NB	832	FSL	2022	FEL	39.98872	-104.94747	SWSE
10	10	ALICIA 12-15H-10NB	834	FSL	1692	FEL	39.98871	-104.94629	SWSE



SHEET 1 OF 3

DATE: 9/26/2014
PROJECT#: 2013026



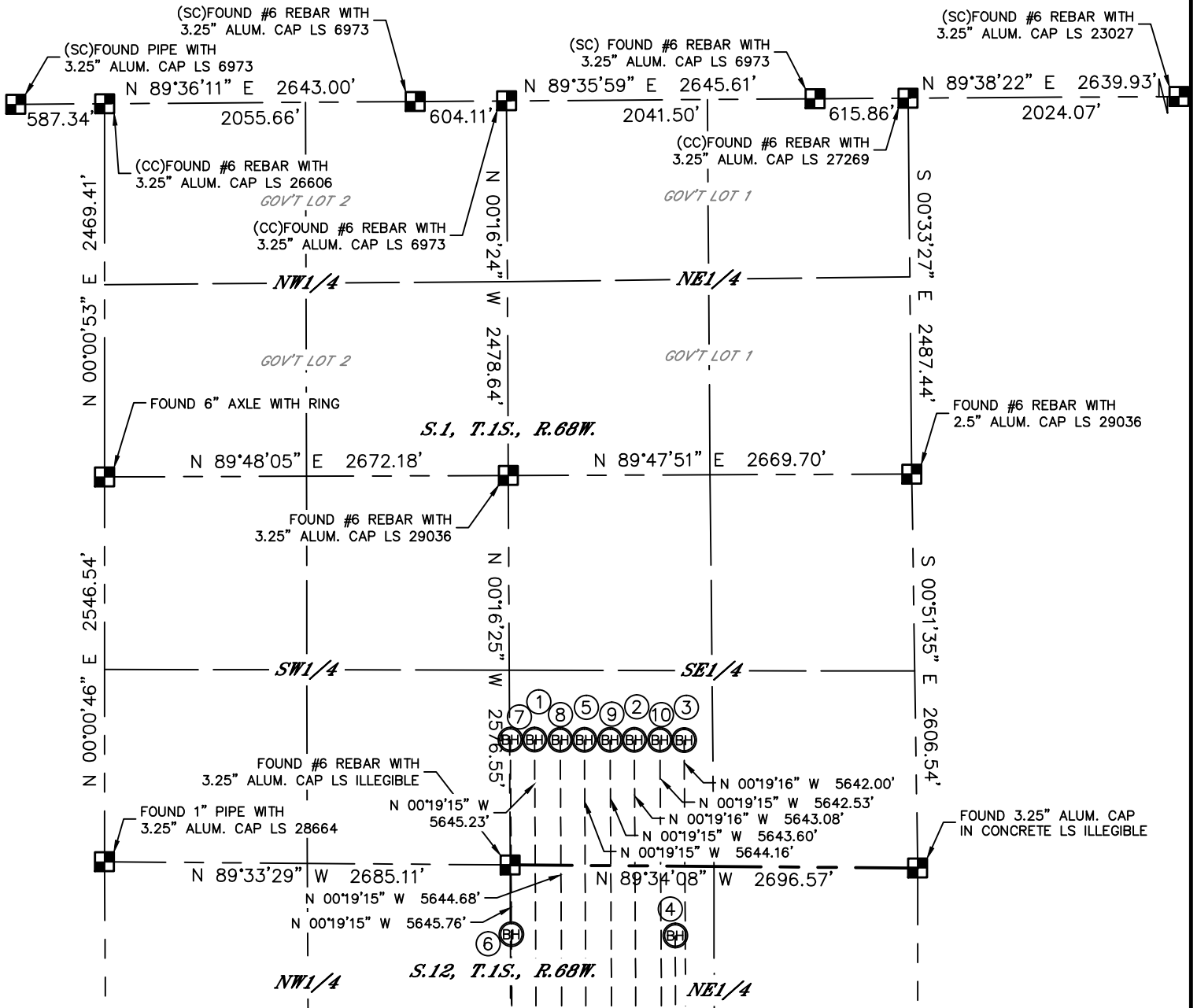
Lat40°, Inc. 1635 Foxtrail Drive, Suite 325 Loveland, CO 970-776-3321

MULTI-WELL PLAN

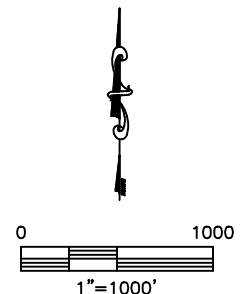
ALICIA HZ PAD

THIS MAP DOES NOT REPRESENT A BOUNDARY SURVEY

SECTION: 12
TOWNSHIP: 1S
RANGE: 68W



SH# W-E	BH#	WELL NAME	BHL FOOTAGE			BHL LAT °	BHL LONG °	1/4/1/4
1	6	ALICIA 12-15H-6C	460	FNL	2690	FEL	39.98520 -104.94983	NWNE
2	1	ALICIA 12-15H-1N	829	FSL	2522	FEL	39.98873 -104.94925	SWSE
3	5	ALICIA 12-15H-5N	831	FSL	2192	FEL	39.98872 -104.94808	SWSE
4	2	ALICIA 12-15H-2N	833	FSL	1863	FEL	39.98872 -104.94690	SWSE
5	4	ALICIA 12-15H-4C	460	FNL	1605	FEL	39.98516 -104.94596	NWNE
6	3	ALICIA 12-15H-3N	835	FSL	1533	FEL	39.98871 -104.94572	SWSE
7	7	ALICIA 12-15H-7NB	828	FSL	2682	FEL	39.98874 -104.94982	SWSE
8	8	ALICIA 12-15H-8NB	830	FSL	2352	FEL	39.98873 -104.94865	SWSE
9	9	ALICIA 12-15H-9NB	832	FSL	2022	FEL	39.98872 -104.94747	SWSE
10	10	ALICIA 12-15H-10NB	834	FSL	1692	FEL	39.98871 -104.94629	SWSE



SHEET 2 OF 3

DATE: 9/26/2014
PROJECT#: 2013026



MULTI-WELL PLAN

ALICIA HZ PAD

SECTION: 12
TOWNSHIP: 1S
RANGE: 68W

