



# Kerr-McGee Oil & Gas Onshore LP

A subsidiary of Anadarko Petroleum Corporation

1099 18<sup>th</sup> Street  
Denver, CO 80202  
720-929-6000

September 11, 2014

Department of Natural Resources  
Oil and Gas Conservation Commission  
The Chancery Building  
1120 Lincoln St., Suite 801  
Denver, CO 80203

Re: **30 Day Certification Letter - 318A.e**  
THOMSEN 5N-31HZ  
Township 2 North, Range 65 West, Section 7: SE/4NW/4  
Unit Spacing: 03N-65W-Sec 31: SE/4SW/4, SW/4SE/4  
02N-65W-Sec 06: E/2W/2, W/2E/2  
02N-65W-Sec 07: E/2NW/4, W/2NE/4, NE/4SW/4, NW/4SE/4  
Weld County, Colorado

Ladies/Gentlemen:

Kerr McGee Oil and Gas Onshore LP (“KMG”) hereby certifies to the Director that KMG owns one-hundred percent (100%) of the mineral rights in the proposed spacing unit. Therefore, KMG respectfully requests the Director to approve the boundary well.

If you have any questions or issues regarding this permit, please contact Cheryl Light at (720) 929-6461.

Very truly yours,

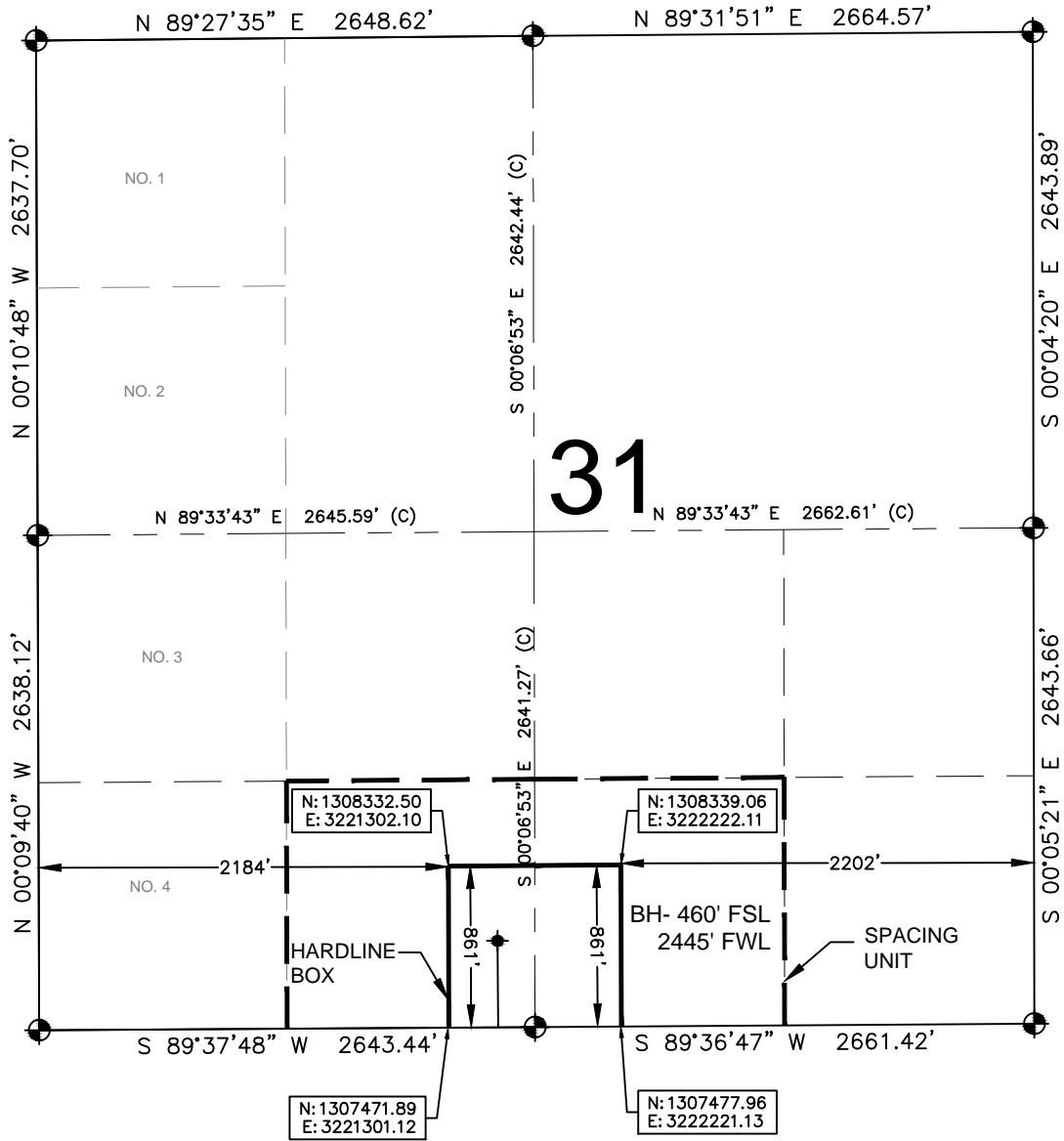
**KERR-McGEE OIL AND GAS ONSHORE LP**

**Ronett Powers**  
**Regulatory Analyst II**

Enclosure

# HARDLINE EXHIBIT: THOMSEN 5N-31HZ

## SECTION 31, TOWNSHIP 3 NORTH, RANGE 65 WEST, 6TH P.M.



**LEGEND**

- ⊙ = EXISTING MONUMENT      ⊕ = BOTTOM HOLE
- = PROPOSED HEEL         BH = BOTTOM HOLE

HEEL LOCATION

NAD83  
 LATITUDE= 40.151448°  
 LONGITUDE= 104.707138°

LATITUDE= 40°09'05.212"  
 LONGITUDE= 104°42'25.698"

BOTTOM HOLE LOCATION

NAD83  
 LATITUDE= 40.175954°  
 LONGITUDE= 104.707087°

LATITUDE= 40°10'33.435"  
 LONGITUDE= 104°42'25.512"

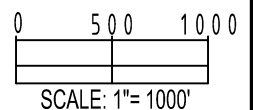
QRT/QRT SECTIONS WITHIN PATH OF THE HARDLINE

SESW, SEC. 31                  SWSE, SEC. 31

AVAILABLE FOOTAGE

9561'

**NOTES:**  
 1. THIS DOCUMENT IS NOT A LAND SURVEY PLAT OR IMPROVEMENT SURVEY PLAT. THIS DOCUMENT DOES NOT REFLECT A FIELD SURVEY. SECTION BREAKDOWN, MONUMENTATION AND HORIZONTAL POSITIONS SHOWN ARE BASED ON THE HEEL AND BOTTOM HOLE LOCATION PROVIDED BY ANADARKO PETROLEUM CORPORATION



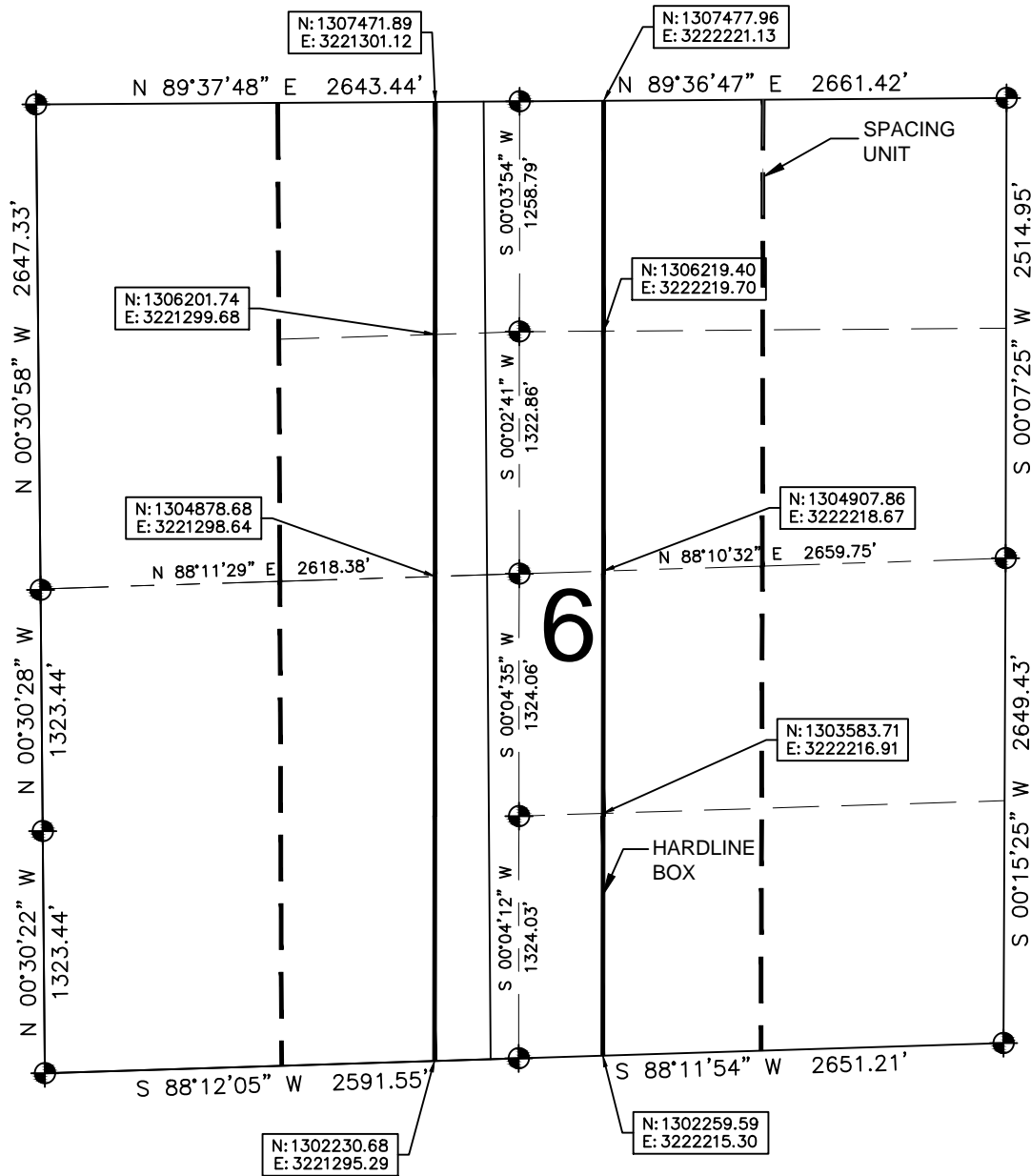
PREPARED BY:

SHEET 1 OF 3

DRAWING DATE: 06-30-14		HEEL LOCATION: NE 1/4 SW 1/4, SEC. 7, T2N, R65W, 6TH P.M. WELD COUNTY, COLORADO	
BY: LCB	CHECKED XXX		

# HARDLINE EXHIBIT: THOMSEN 5N-31HZ

SECTION 6, TOWNSHIP 2 NORTH, RANGE 65 WEST, 6TH P.M.



## LEGEND

- ⊕ = EXISTING MONUMENT
- ⊙ = PROPOSED HEEL
- ⚬ = BOTTOM HOLE
- BH = BOTTOM HOLE

## QRT/QRT SECTIONS WITHIN PATH OF THE HARDLINE

- NENW, SEC. 6
- SENE, SEC. 6
- E½ SW, SEC. 6
- N½ NE, SEC. 6
- S½ NE, SEC. 6
- NWSE, SEC. 6
- SWSE, SEC. 6

## NOTES:

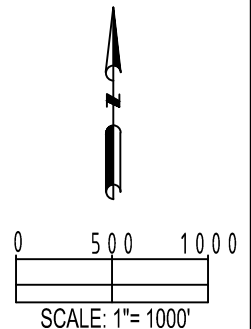
- THIS DOCUMENT IS NOT A LAND SURVEY PLAT OR IMPROVEMENT SURVEY PLAT. THIS DOCUMENT DOES NOT REFLECT A FIELD SURVEY. SECTION BREAKDOWN, MONUMENTATION AND HORIZONTAL POSITIONS SHOWN ARE BASED ON THE HEEL AND BOTTOM HOLE LOCATION PROVIDED BY ANADARKO PETROLEUM CORPORATION

PREPARED BY:

**PFS**  
Petroleum Field Services, LLC  
7535 Hilltop Circle  
Denver, CO 80221

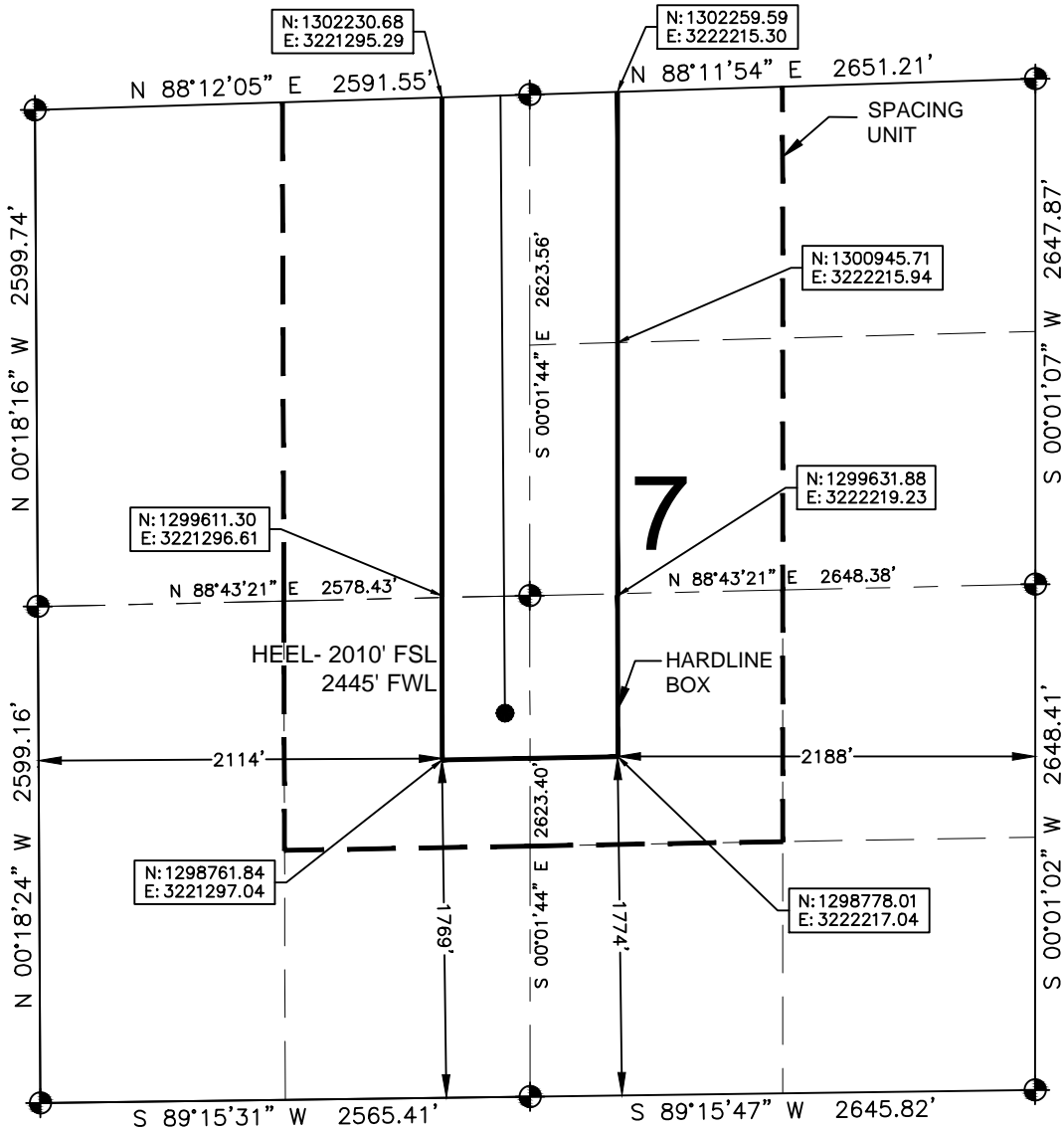
SHEET 2 OF 3

DRAWING DATE: 06-30-14		HEEL LOCATION: NE 1/4 SW 1/4, SEC. 7, T2N, R65W, 6TH P.M. WELD COUNTY, COLORADO	
BY: LCB	CHECKED XXX		



# HARDLINE EXHIBIT: THOMSEN 5N-31HZ

SECTION 7, TOWNSHIP 2 NORTH, RANGE 65 WEST, 6TH P.M.



### LEGEND

- ⊕ = EXISTING MONUMENT
- ⊙ = PROPOSED HEEL
- ⚬ = BOTTOM HOLE
- BH = BOTTOM HOLE

### QRT/QRT SECTIONS WITHIN PATH OF THE HARDLINE

- E½ NW, SEC. 7
- E½ SW, SEC. 7
- SWNE, SEC. 7
- NWNE, SEC. 7
- NWSE, SEC. 7

### NOTES:

1. THIS DOCUMENT IS NOT A LAND SURVEY PLAT OR IMPROVEMENT SURVEY PLAT. THIS DOCUMENT DOES NOT REFLECT A FIELD SURVEY. SECTION BREAKDOWN, MONUMENTATION AND HORIZONTAL POSITIONS SHOWN ARE BASED ON THE HEEL AND BOTTOM HOLE LOCATION PROVIDED BY ANADARKO PETROLEUM CORPORATION

PREPARED BY:



**PFS**  
Petroleum Field Services, LLC  
7535 Hilltop Circle  
Denver, CO 80221

SHEET 3 OF 3

DRAWING DATE: 06-30-14		HEEL LOCATION: NE 1/4 SW 1/4, SEC. 7, T2N, R65W, 6TH P.M. WELD COUNTY, COLORADO	
BY: LCB	CHECKED XXX		

