

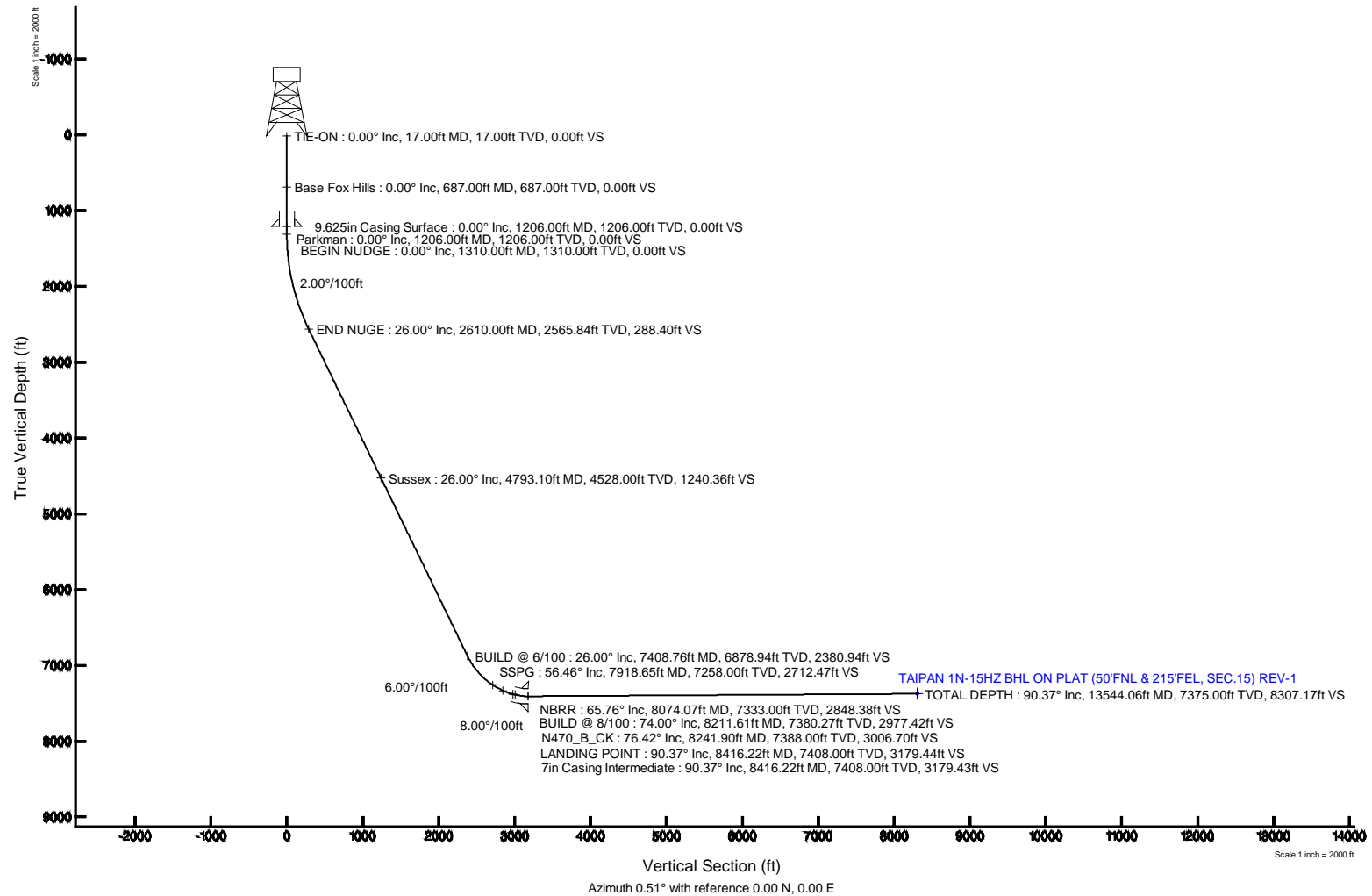


# KERR-MCGEE OIL & GAS ONSHORE LP

Location: COLORADO Slot: SLOT#41 TAIPAN 1N-15HZ (2192'FSL & 500'FEL, SEC.22)  
Field: WELD COUNTY (KERR MCGEE) Well: TAIPAN 1N-15HZ  
Facility: SEC.22-T2N-R67W Wellbore: TAIPAN 1N-15HZ PWB



Plus reference wellbore is TAIPAN 1N-15HZ (2192'FSL & 500'FEL, SEC.22)	
True vertical depths are referenced to CYPRES (5485)	Grid System NAD83 / Lambert Conformal 30' Northern Zone (55), U.S. feet
Measured depths are referenced to CYPRES (5485)	North Reference True North
CYPRES (5485) surface elevation: 5075 feet	Scale True Distance
Measured depths are referenced to CYPRES (5485) TAIPAN 1N-15HZ (2192'FSL & 500'FEL, SEC.22) Well	
Coordinates are in feet, referenced to B1	
Copyright 2000 by Baker Hughes Services Inc.	



Location:	COLORADO	Slot:	SLOT#41 TAIPAN 1N-15HZ (2192'FSL & 500'FEL, SEC.22)
Field:	WELD COUNTY (KERR MCGEE)	Well:	TAIPAN 1N-15HZ
Facility:	SEC.22-T2N-R67W	Wellbore:	TAIPAN 1N-15HZ PWB

Plot reference wellpath is TAIWAN 1N-15HZ (PERMIT REV-1) PWP

Slot: SLOT#41 TAIWAN 1N-15HZ (2192'FSL &amp; 500'FEL, SEC.22)

Field: WELD COUNTY (KERR MCGEE)

Well: TAIPAN 1N-15HZ

Facility: SEC.22-T2N-R67W

Wellbore: TAIPAN 1N-15HZ PWB

Plot reference wellpath is TAIWAN 1N-15HZ (PERMIT REV-1) PWP

True vertical depths are referenced to (17KB) (RKB)

Grid System: NAD83 / Lambert Colorado SP. Northern Zone (501). US feet

Measured depths are referenced to (17KB) (RKB)

North Reference: True north

(17KB) (RKB) to Mean Sea Level: 5015 feet

Scale: True distance

Mean Sea Level to Mud line (At Slot: SLOT#41 TAIWAN 1N-15HZ (2192'FSL & 500'FEL, SEC.22)): 0 feet

Depths are in feet

Coordinates are in feet referenced to Slot

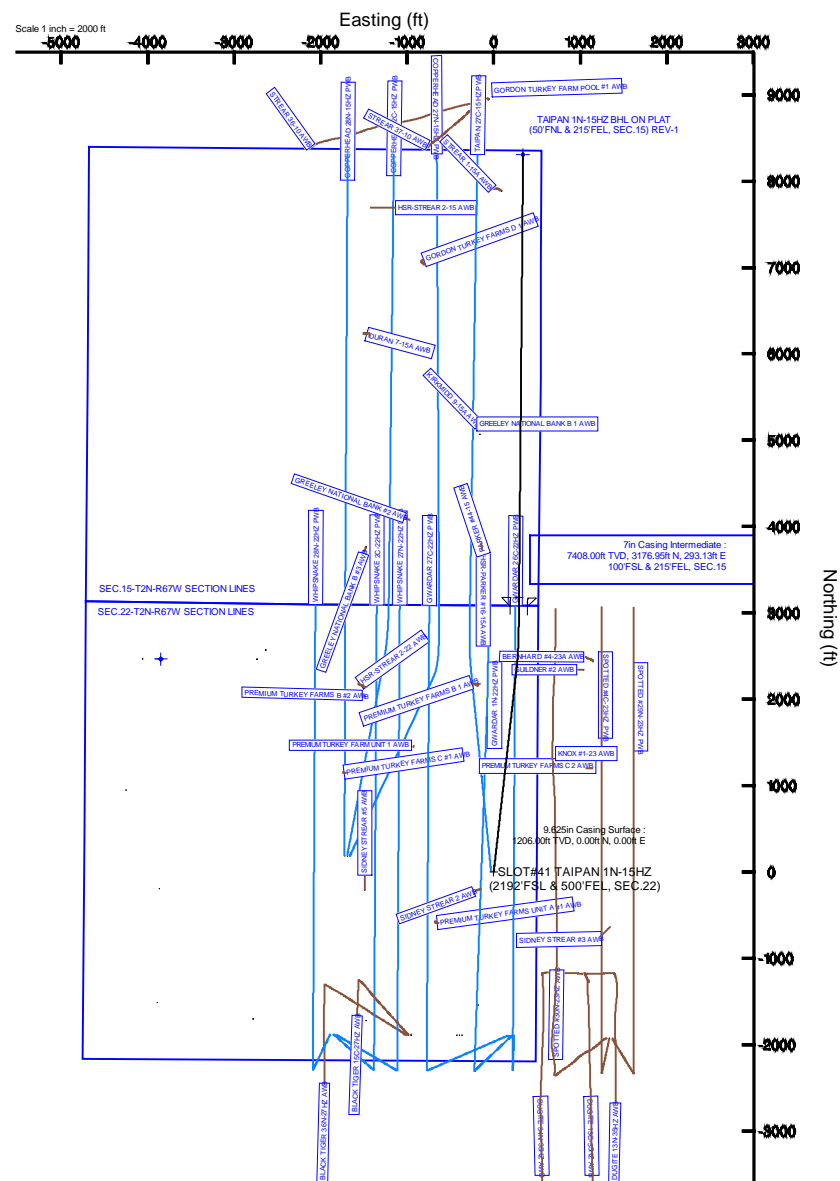
Created by: precain on 04/Sep/2014

Facility Name				Grid East (US ft)	Grid North (US ft)	Latitude	Longitude
SEC 22-T2N-R67W				1317370.270	1290629.950	40°07'46.204"N	104°52'42.769"W
Slot	Local N (ft)	Local E (ft)	Grid East (US ft)	Grid North (US ft)	Latitude	Longitude	
SLOT#41 TAPAN N-15H2 (2192FSL & 500FEL SEC 22)	-2574.01	2606.46	1317638.593	1288074.379	40°07'20.766"N	104°52'09.217"W	
(17KB) (RKH) to Mud line (At Slot: SLOT#41 TAPAN N-15H2 (2192FSL & 500FEL SEC 22))							5015R
Mean Sea Level to Mud line (At Slot: SLOT#41 TAPAN N-15H2 (2192FSL & 500FEL SEC 22))							DR
(17KB) (RKH) to Mean Sea Level							5015R

Start MD (ft)	End MD (ft)	Tool	Model	Log Name/Comment	Wellbore
17.00	13544.06	NaviTrak	NaviTrak (IFR)		TAIPAN 1N-15HZ PWB

Design Comment	MD (ft)	Inc (°)	Az (°)	TVD (ft)	Local N (ft)	Local E (ft)	DLS (°/100ft)	VS (ft)
TIE-ON	17.00	0.000	6.400	17.00	0.00	0.00	0.00	0.00
BEGIN NUDGE	1310.00	0.000	6.400	1310.00	0.00	0.00	0.00	0.00
END NUDGE	2610.00	26.000	6.400	2655.84	288.13	32.32	2.00	288.40
BUILD @ 6/100	7408.76	26.000	6.400	8878.94	2378.65	266.81	0.00	2380.94
BUILD @ 8/100	8211.61	74.000	0.511	7380.27	2974.94	291.33	6.00	2977.42
LANDING POINT	8416.22	90.369	0.511	7408.00	3176.95	293.13	8.00	3179.44
TOTAL DEPTH	13544.06	90.369	0.511	7375.00	8304.47	338.82	0.00	8307.17

Name	MD (ft)	TYD (ft)	Local N (ft)	Local E (ft)	Grid East (US ft)	Grid North (US ft)	Latitude	Longitude
SEC 15-T2N67W SECTION LINES		0.00	13006.20	-2710.22	137392.05	1301060.42	40°09'29.297N	104°52'44.123W
SEC 15-T2N67W SECTION LINES		0.00	2486.17	-3346.69	137250.63	1290513.02	40°07'45.134N	104°52'56.739W
TAPAN N 154E B4, ON PLAT. 507PA, & 215TP, SEC 15, REV 1	13564.08	7375.00	8304.47	338.82	137667.32	1296300.70	40°08'42.832N	104°52'04.854W



REFERENCE WELLPATH IDENTIFICATION			
Operator	KERR-MCGEE OIL & GAS ONSHORE LP	Slot	SLOT#41 TAIPAN 1N-15HZ (2192'FSL & 500'FEL, SEC.22)
Area	COLORADO	Well	TAIPAN 1N-15HZ
Field	WELD COUNTY (KERR MCGEE)	Wellbore	TAIPAN 1N-15HZ PWB
Facility	SEC.22-T2N-R67W		

REPORT SETUP INFORMATION			
Projection System	NAD83 / Lambert Colorado SP, Northern Zone (501), US feet	Software System	WellArchitect® 4.0.0
North Reference	True	User	Precain
Scale	0.999959	Report Generated	04/Sep/2014 at 15:39
Convergence at slot	n/a	Database/Source file	WellArchitectDB/TAIPAN_1N-15HZ_PWB.xml

WELLPATH LOCATION						
	Local coordinates		Grid coordinates		Geographic coordinates	
	North[ft]	East[ft]	Easting[US ft]	Northing[US ft]	Latitude	Longitude
Slot Location	-2574.01	2606.46	3176394.59	1288074.38	40°07'20.766"N	104°52'09.217"W
Facility Reference Pt			3173770.27	1290629.95	40°07'46.204"N	104°52'42.769"W
Field Reference Pt			3197771.84	1268891.29	40°04'09.600"N	104°47'36.000"W

WELLPATH DATUM			
Calculation method	Minimum curvature	(17'KB) (RKB) to Facility Vertical Datum	5015.00ft
Horizontal Reference Pt	Slot	(17'KB) (RKB) to Mean Sea Level	5015.00ft
Vertical Reference Pt	(17'KB) (RKB)	(17'KB) (RKB) to Mud Line at Slot (SLOT#41 TAIPAN 1N-15HZ (2192'FSL & 500'FEL, SEC.22))	5015.00ft
MD Reference Pt	(17'KB) (RKB)	Section Origin	N 0.00, E 0.00 ft
Field Vertical Reference	Mean Sea Level	Section Azimuth	0.51°

REFERENCE WELLPATH IDENTIFICATION			
Operator	KERR-MCGEE OIL & GAS ONSHORE LP	Slot	SLOT#41 TAIPAN 1N-15HZ (2192'FSL & 500'FEL, SEC.22)
Area	COLORADO	Well	TAIPAN 1N-15HZ
Field	WELD COUNTY (KERR MCGEE)	Wellbore	TAIPAN 1N-15HZ PWB
Facility	SEC.22-T2N-R67W		

WELLPATH DATA (149 stations) † = interpolated/extrapolated station										
MD [ft]	Inclination [°]	Azimuth [°]	TVD [ft]	Vert Sect [ft]	North [ft]	East [ft]	Latitude	Longitude	DLS [°/100ft]	Comments
0.00†	0.000	6.400	0.00	0.00	0.00	0.00	40°07'20.766"N	104°52'09.217"W	0.00	
17.00	0.000	6.400	17.00	0.00	0.00	0.00	40°07'20.766"N	104°52'09.217"W	0.00	TIE-ON
117.00†	0.000	6.400	117.00	0.00	0.00	0.00	40°07'20.766"N	104°52'09.217"W	0.00	
217.00†	0.000	6.400	217.00	0.00	0.00	0.00	40°07'20.766"N	104°52'09.217"W	0.00	
317.00†	0.000	6.400	317.00	0.00	0.00	0.00	40°07'20.766"N	104°52'09.217"W	0.00	
417.00†	0.000	6.400	417.00	0.00	0.00	0.00	40°07'20.766"N	104°52'09.217"W	0.00	
517.00†	0.000	6.400	517.00	0.00	0.00	0.00	40°07'20.766"N	104°52'09.217"W	0.00	
617.00†	0.000	6.400	617.00	0.00	0.00	0.00	40°07'20.766"N	104°52'09.217"W	0.00	
687.00†	0.000	6.400	687.00	0.00	0.00	0.00	40°07'20.766"N	104°52'09.217"W	0.00	Base Fox Hills
717.00†	0.000	6.400	717.00	0.00	0.00	0.00	40°07'20.766"N	104°52'09.217"W	0.00	
817.00†	0.000	6.400	817.00	0.00	0.00	0.00	40°07'20.766"N	104°52'09.217"W	0.00	
917.00†	0.000	6.400	917.00	0.00	0.00	0.00	40°07'20.766"N	104°52'09.217"W	0.00	
1017.00†	0.000	6.400	1017.00	0.00	0.00	0.00	40°07'20.766"N	104°52'09.217"W	0.00	
1117.00†	0.000	6.400	1117.00	0.00	0.00	0.00	40°07'20.766"N	104°52'09.217"W	0.00	
1206.00†	0.000	6.400	1206.00	0.00	0.00	0.00	40°07'20.766"N	104°52'09.217"W	0.00	Parkman
1217.00†	0.000	6.400	1217.00	0.00	0.00	0.00	40°07'20.766"N	104°52'09.217"W	0.00	
1310.00	0.000	6.400	1310.00	0.00	0.00	0.00	40°07'20.766"N	104°52'09.217"W	0.00	BEGIN NUDGE
1317.00†	0.140	6.400	1317.00	0.01	0.01	0.00	40°07'20.766"N	104°52'09.217"W	2.00	
1417.00†	2.140	6.400	1416.98	1.99	1.99	0.22	40°07'20.786"N	104°52'09.214"W	2.00	
1517.00†	4.140	6.400	1516.82	7.44	7.43	0.83	40°07'20.839"N	104°52'09.206"W	2.00	
1617.00†	6.140	6.400	1616.41	16.35	16.33	1.83	40°07'20.927"N	104°52'09.193"W	2.00	
1717.00†	8.140	6.400	1715.63	28.71	28.68	3.22	40°07'21.049"N	104°52'09.176"W	2.00	
1817.00†	10.140	6.400	1814.36	44.51	44.47	4.99	40°07'21.205"N	104°52'09.153"W	2.00	
1917.00†	12.140	6.400	1912.47	63.73	63.67	7.14	40°07'21.395"N	104°52'09.125"W	2.00	
2017.00†	14.140	6.400	2009.85	86.34	86.26	9.68	40°07'21.618"N	104°52'09.092"W	2.00	
2117.00†	16.140	6.400	2106.37	112.32	112.21	12.59	40°07'21.875"N	104°52'09.055"W	2.00	
2217.00†	18.140	6.400	2201.92	141.63	141.50	15.87	40°07'22.164"N	104°52'09.013"W	2.00	
2317.00†	20.140	6.400	2296.39	174.25	174.08	19.53	40°07'22.486"N	104°52'08.966"W	2.00	
2417.00†	22.140	6.400	2389.66	210.12	209.92	23.55	40°07'22.840"N	104°52'08.914"W	2.00	
2517.00†	24.140	6.400	2481.61	249.21	248.97	27.93	40°07'23.226"N	104°52'08.858"W	2.00	
2610.00	26.000	6.400	2565.84	288.40	288.13	32.32	40°07'23.613"N	104°52'08.801"W	2.00	END NUGE
2617.00†	26.000	6.400	2572.13	291.46	291.18	32.66	40°07'23.643"N	104°52'08.797"W	0.00	
2717.00†	26.000	6.400	2662.01	335.06	334.74	37.55	40°07'24.074"N	104°52'08.734"W	0.00	
2817.00†	26.000	6.400	2751.89	378.67	378.30	42.43	40°07'24.504"N	104°52'08.671"W	0.00	
2917.00†	26.000	6.400	2841.77	422.27	421.87	47.32	40°07'24.935"N	104°52'08.608"W	0.00	
3017.00†	26.000	6.400	2931.65	465.88	465.43	52.21	40°07'25.365"N	104°52'08.545"W	0.00	
3117.00†	26.000	6.400	3021.53	509.48	509.00	57.09	40°07'25.796"N	104°52'08.482"W	0.00	
3217.00†	26.000	6.400	3111.41	553.09	552.56	61.98	40°07'26.226"N	104°52'08.419"W	0.00	
3317.00†	26.000	6.400	3201.29	596.70	596.12	66.87	40°07'26.657"N	104°52'08.356"W	0.00	
3417.00†	26.000	6.400	3291.17	640.30	639.69	71.75	40°07'27.087"N	104°52'08.293"W	0.00	
3517.00†	26.000	6.400	3381.05	683.91	683.25	76.64	40°07'27.518"N	104°52'08.230"W	0.00	
3617.00†	26.000	6.400	3470.93	727.51	726.82	81.53	40°07'27.948"N	104°52'08.168"W	0.00	
3717.00†	26.000	6.400	3560.81	771.12	770.38	86.41	40°07'28.379"N	104°52'08.105"W	0.00	
3817.00†	26.000	6.400	3650.69	814.73	813.94	91.30	40°07'28.809"N	104°52'08.042"W	0.00	
3917.00†	26.000	6.400	3740.56	858.33	857.51	96.18	40°07'29.240"N	104°52'07.979"W	0.00	

REFERENCE WELLPATH IDENTIFICATION			
Operator	KERR-MCGEE OIL & GAS ONSHORE LP	Slot	SLOT#41 TAIPAN 1N-15HZ (2192'FSL & 500'FEL, SEC.22)
Area	COLORADO	Well	TAIPAN 1N-15HZ
Field	WELD COUNTY (KERR MCGEE)	Wellbore	TAIPAN 1N-15HZ PWB
Facility	SEC.22-T2N-R67W		

WELLPATH DATA (149 stations) † = interpolated/extrapolated station										
MD [ft]	Inclination [°]	Azimuth [°]	TVD [ft]	Vert Sect [ft]	North [ft]	East [ft]	Latitude	Longitude	DLS [°/100ft]	Comments
4017.00†	26.000	6.400	3830.44	901.94	901.07	101.07	40°07'29.670"N	104°52'07.916"W	0.00	
4117.00†	26.000	6.400	3920.32	945.54	944.64	105.96	40°07'30.101"N	104°52'07.853"W	0.00	
4217.00†	26.000	6.400	4010.20	989.15	988.20	110.84	40°07'30.531"N	104°52'07.790"W	0.00	
4317.00†	26.000	6.400	4100.08	1032.75	1031.76	115.73	40°07'30.962"N	104°52'07.727"W	0.00	
4417.00†	26.000	6.400	4189.96	1076.36	1075.33	120.62	40°07'31.392"N	104°52'07.664"W	0.00	
4517.00†	26.000	6.400	4279.84	1119.97	1118.89	125.50	40°07'31.823"N	104°52'07.601"W	0.00	
4617.00†	26.000	6.400	4369.72	1163.57	1162.45	130.39	40°07'32.254"N	104°52'07.538"W	0.00	
4717.00†	26.000	6.400	4459.60	1207.18	1206.02	135.28	40°07'32.684"N	104°52'07.476"W	0.00	
4793.10†	26.000	6.400	4528.00	1240.36	1239.17	139.00	40°07'33.012"N	104°52'07.428"W	0.00	Sussex
4817.00†	26.000	6.400	4549.48	1250.78	1249.58	140.16	40°07'33.115"N	104°52'07.413"W	0.00	
4917.00†	26.000	6.400	4639.36	1294.39	1293.15	145.05	40°07'33.545"N	104°52'07.350"W	0.00	
5017.00†	26.000	6.400	4729.24	1337.99	1336.71	149.94	40°07'33.976"N	104°52'07.287"W	0.00	
5117.00†	26.000	6.400	4819.12	1381.60	1380.27	154.82	40°07'34.406"N	104°52'07.224"W	0.00	
5217.00†	26.000	6.400	4909.00	1425.21	1423.84	159.71	40°07'34.837"N	104°52'07.161"W	0.00	
5317.00†	26.000	6.400	4998.88	1468.81	1467.40	164.60	40°07'35.267"N	104°52'07.098"W	0.00	
5417.00†	26.000	6.400	5088.76	1512.42	1510.97	169.48	40°07'35.698"N	104°52'06.595"W	0.00	
5517.00†	26.000	6.400	5178.64	1556.02	1554.53	174.37	40°07'36.128"N	104°52'06.972"W	0.00	
5617.00†	26.000	6.400	5268.51	1599.63	1598.09	179.25	40°07'36.559"N	104°52'06.909"W	0.00	
5717.00†	26.000	6.400	5358.39	1643.23	1641.66	184.14	40°07'36.989"N	104°52'06.846"W	0.00	
5817.00†	26.000	6.400	5448.27	1686.84	1685.22	189.03	40°07'37.420"N	104°52'06.784"W	0.00	
5917.00†	26.000	6.400	5538.15	1730.45	1728.79	193.91	40°07'37.850"N	104°52'06.721"W	0.00	
6017.00†	26.000	6.400	5628.03	1774.05	1772.35	198.80	40°07'38.281"N	104°52'06.658"W	0.00	
6117.00†	26.000	6.400	5717.91	1817.66	1815.91	203.69	40°07'38.711"N	104°52'06.595"W	0.00	
6217.00†	26.000	6.400	5807.79	1861.26	1859.48	208.57	40°07'39.142"N	104°52'06.532"W	0.00	
6317.00†	26.000	6.400	5897.67	1904.87	1903.04	213.46	40°07'39.572"N	104°52'06.469"W	0.00	
6417.00†	26.000	6.400	5987.55	1948.48	1946.61	218.35	40°07'40.003"N	104°52'06.406"W	0.00	
6517.00†	26.000	6.400	6077.43	1992.08	1990.17	223.23	40°07'40.433"N	104°52'06.343"W	0.00	
6617.00†	26.000	6.400	6167.31	2035.69	2033.73	228.12	40°07'40.864"N	104°52'06.280"W	0.00	
6717.00†	26.000	6.400	6257.19	2079.29	2077.30	233.01	40°07'41.294"N	104°52'06.217"W	0.00	
6817.00†	26.000	6.400	6347.07	2122.90	2120.86	237.89	40°07'41.725"N	104°52'06.154"W	0.00	
6917.00†	26.000	6.400	6436.95	2166.50	2164.42	242.78	40°07'42.155"N	104°52'06.092"W	0.00	
7017.00†	26.000	6.400	6526.83	2210.11	2207.99	247.67	40°07'42.586"N	104°52'06.029"W	0.00	
7117.00†	26.000	6.400	6616.71	2253.72	2251.55	252.55	40°07'43.016"N	104°52'05.966"W	0.00	
7217.00†	26.000	6.400	6706.58	2297.32	2295.12	257.44	40°07'43.447"N	104°52'05.903"W	0.00	
7317.00†	26.000	6.400	6796.46	2340.93	2338.68	262.33	40°07'43.877"N	104°52'05.840"W	0.00	
7408.76	26.000	6.400	6878.94	2380.94	2378.65	266.81	40°07'44.272"N	104°52'05.782"W	0.00	BUILD @ 6/100
7417.00†	26.490	6.253	6886.33	2384.56	2382.28	267.21	40°07'44.308"N	104°52'05.777"W	6.00	
7517.00†	32.448	4.801	6973.35	2433.55	2431.22	271.89	40°07'44.792"N	104°52'05.717"W	6.00	
7617.00†	38.418	3.759	7054.80	2491.37	2489.01	276.18	40°07'45.363"N	104°52'05.662"W	6.00	
7717.00†	44.394	2.959	7129.77	2557.40	2555.01	280.02	40°07'46.015"N	104°52'05.612"W	6.00	
7817.00†	50.376	2.314	7197.44	2630.91	2628.49	283.39	40°07'46.741"N	104°52'05.569"W	6.00	
7917.00†	56.360	1.772	7257.08	2711.09	2708.65	286.23	40°07'47.533"N	104°52'05.532"W	6.00	
7918.65†	56.459	1.764	7258.00	2712.47	2710.03	286.27	40°07'47.547"N	104°52'05.531"W	6.00	SSPG
8017.00†	62.346	1.301	7308.04	2797.07	2794.61	288.53	40°07'48.383"N	104°52'05.502"W	6.00	
8074.07†	65.763	1.055	7333.00	2848.38	2845.91	289.58	40°07'48.890"N	104°52'05.489"W	6.00	NBRR

REFERENCE WELLPATH IDENTIFICATION			
Operator	KERR-MCGEE OIL & GAS ONSHORE LP	Slot	SLOT#41 TAIPAN 1N-15HZ (2192'FSL & 500'FEL, SEC.22)
Area	COLORADO	Well	TAIPAN 1N-15HZ
Field	WELD COUNTY (KERR MCGEE)	Wellbore	TAIPAN 1N-15HZ PWB
Facility	SEC.22-T2N-R67W		

WELLPATH DATA (149 stations) † = interpolated/extrapolated station										
MD [ft]	Inclination [°]	Azimuth [°]	TVD [ft]	Vert Sect [ft]	North [ft]	East [ft]	Latitude	Longitude	DLS [°/100ft]	Comments
8117.00†	68.334	0.879	7349.74	2887.91	2885.43	290.25	40°07'49.280"N	104°52'05.480"W	6.00	
8211.61	74.000	0.511	7380.27	2977.42	2974.94	291.33	40°07'50.165"N	104°52'05.466"W	6.00	BUILD @ 8/100
8217.00†	74.431	0.511	7381.74	2982.60	2980.12	291.37	40°07'50.216"N	104°52'05.466"W	8.00	
8241.90†	76.423	0.511	7388.00	3006.70	3004.22	291.59	40°07'50.454"N	104°52'05.463"W	8.00	N470_B_CK
8317.00†	82.431	0.511	7401.77	3080.49	3078.01	292.25	40°07'51.183"N	104°52'05.455"W	8.00	
8416.22	90.369	0.511	7408.00	3179.44	3176.95	293.13	40°07'52.161"N	104°52'05.443"W	8.00	LANDING POINT
8417.00†	90.369	0.511	7408.00	3180.21	3177.73	293.14	40°07'52.169"N	104°52'05.443"W	0.00	
8517.00†	90.369	0.511	7407.35	3280.21	3277.72	294.03	40°07'53.157"N	104°52'05.432"W	0.00	
8617.00†	90.369	0.511	7406.71	3380.21	3377.71	294.92	40°07'54.145"N	104°52'05.420"W	0.00	
8717.00†	90.369	0.511	7406.06	3480.21	3477.71	295.81	40°07'55.133"N	104°52'05.409"W	0.00	
8817.00†	90.369	0.511	7405.42	3580.21	3577.70	296.70	40°07'56.121"N	104°52'05.397"W	0.00	
8917.00†	90.369	0.511	7404.78	3680.20	3677.70	297.59	40°07'57.109"N	104°52'05.386"W	0.00	
9017.00†	90.369	0.511	7404.13	3780.20	3777.69	298.48	40°07'58.098"N	104°52'05.374"W	0.00	
9117.00†	90.369	0.511	7403.49	3880.20	3877.68	299.37	40°07'59.086"N	104°52'05.363"W	0.00	
9217.00†	90.369	0.511	7402.85	3980.20	3977.68	300.26	40°08'00.074"N	104°52'05.351"W	0.00	
9317.00†	90.369	0.511	7402.20	4080.20	4077.67	301.16	40°08'01.062"N	104°52'05.340"W	0.00	
9417.00†	90.369	0.511	7401.56	4180.19	4177.67	302.05	40°08'02.050"N	104°52'05.328"W	0.00	
9517.00†	90.369	0.511	7400.92	4280.19	4277.66	302.94	40°08'03.038"N	104°52'05.317"W	0.00	
9617.00†	90.369	0.511	7400.27	4380.19	4377.65	303.83	40°08'04.026"N	104°52'05.305"W	0.00	
9717.00†	90.369	0.511	7399.63	4480.19	4477.65	304.72	40°08'05.015"N	104°52'05.294"W	0.00	
9817.00†	90.369	0.511	7398.99	4580.19	4577.64	305.61	40°08'06.003"N	104°52'05.282"W	0.00	
9917.00†	90.369	0.511	7398.34	4680.18	4677.64	306.50	40°08'06.991"N	104°52'05.271"W	0.00	
10017.00†	90.369	0.511	7397.70	4780.18	4777.63	307.39	40°08'07.979"N	104°52'05.259"W	0.00	
10117.00†	90.369	0.511	7397.05	4880.18	4877.62	308.28	40°08'08.967"N	104°52'05.248"W	0.00	
10217.00†	90.369	0.511	7396.41	4980.18	4977.62	309.17	40°08'09.955"N	104°52'05.236"W	0.00	
10317.00†	90.369	0.511	7395.77	5080.18	5077.61	310.07	40°08'10.943"N	104°52'05.225"W	0.00	
10417.00†	90.369	0.511	7395.12	5180.17	5177.61	310.96	40°08'11.932"N	104°52'05.213"W	0.00	
10517.00†	90.369	0.511	7394.48	5280.17	5277.60	311.85	40°08'12.920"N	104°52'05.202"W	0.00	
10617.00†	90.369	0.511	7393.84	5380.17	5377.59	312.74	40°08'13.908"N	104°52'05.190"W	0.00	
10717.00†	90.369	0.511	7393.19	5480.17	5477.59	313.63	40°08'14.896"N	104°52'05.179"W	0.00	
10817.00†	90.369	0.511	7392.55	5580.16	5577.58	314.52	40°08'15.884"N	104°52'05.167"W	0.00	
10917.00†	90.369	0.511	7391.91	5680.16	5677.58	315.41	40°08'16.872"N	104°52'05.156"W	0.00	
11017.00†	90.369	0.511	7391.26	5780.16	5777.57	316.30	40°08'17.861"N	104°52'05.144"W	0.00	
11117.00†	90.369	0.511	7390.62	5880.16	5877.56	317.19	40°08'18.849"N	104°52'05.133"W	0.00	
11217.00†	90.369	0.511	7389.98	5980.16	5977.56	318.09	40°08'19.837"N	104°52'05.121"W	0.00	
11317.00†	90.369	0.511	7389.33	6080.15	6077.55	318.98	40°08'20.825"N	104°52'05.110"W	0.00	
11417.00†	90.369	0.511	7388.69	6180.15	6177.55	319.87	40°08'21.813"N	104°52'05.098"W	0.00	
11517.00†	90.369	0.511	7388.05	6280.15	6277.54	320.76	40°08'22.801"N	104°52'05.087"W	0.00	
11617.00†	90.369	0.511	7387.40	6380.15	6377.53	321.65	40°08'23.789"N	104°52'05.075"W	0.00	
11717.00†	90.369	0.511	7386.76	6480.15	6477.53	322.54	40°08'24.778"N	104°52'05.064"W	0.00	
11817.00†	90.369	0.511	7386.11	6580.14	6577.52	323.43	40°08'25.766"N	104°52'05.052"W	0.00	
11917.00†	90.369	0.511	7385.47	6680.14	6677.51	324.32	40°08'26.754"N	104°52'05.041"W	0.00	
12017.00†	90.369	0.511	7384.83	6780.14	6777.51	325.21	40°08'27.742"N	104°52'05.029"W	0.00	
12117.00†	90.369	0.511	7384.18	6880.14	6877.50	326.11	40°08'28.730"N	104°52'05.018"W	0.00	
12217.00†	90.369	0.511	7383.54	6980.14	6977.50	327.00	40°08'29.718"N	104°52'05.006"W	0.00	

REFERENCE WELLPATH IDENTIFICATION			
Operator	KERR-MCGEE OIL & GAS ONSHORE LP	Slot	SLOT#41 TAIPAN 1N-15HZ (2192'FSL & 500'FEL, SEC.22)
Area	COLORADO	Well	TAIPAN 1N-15HZ
Field	WELD COUNTY (KERR MCGEE)	Wellbore	TAIPAN 1N-15HZ PWB
Facility	SEC.22-T2N-R67W		

WELLPATH DATA (149 stations) † = interpolated/extrapolated station										
MD [ft]	Inclination [°]	Azimuth [°]	TVD [ft]	Vert Sect [ft]	North [ft]	East [ft]	Latitude	Longitude	DLS [°/100ft]	Comments
12317.00†	90.369	0.511	7382.90	7080.13	7077.49	327.89	40°08'30.706"N	104°52'04.995"W	0.00	
12417.00†	90.369	0.511	7382.25	7180.13	7177.48	328.78	40°08'31.695"N	104°52'04.984"W	0.00	
12517.00†	90.369	0.511	7381.61	7280.13	7277.48	329.67	40°08'32.683"N	104°52'04.972"W	0.00	
12617.00†	90.369	0.511	7380.97	7380.13	7377.47	330.56	40°08'33.671"N	104°52'04.961"W	0.00	
12717.00†	90.369	0.511	7380.32	7480.13	7477.47	331.45	40°08'34.659"N	104°52'04.949"W	0.00	
12817.00†	90.369	0.511	7379.68	7580.12	7577.46	332.34	40°08'35.647"N	104°52'04.938"W	0.00	
12917.00†	90.369	0.511	7379.04	7680.12	7677.45	333.23	40°08'36.635"N	104°52'04.926"W	0.00	
13017.00†	90.369	0.511	7378.39	7780.12	7777.45	334.13	40°08'37.623"N	104°52'04.915"W	0.00	
13117.00†	90.369	0.511	7377.75	7880.12	7877.44	335.02	40°08'38.612"N	104°52'04.903"W	0.00	
13217.00†	90.369	0.511	7377.10	7980.11	7977.44	335.91	40°08'39.600"N	104°52'04.892"W	0.00	
13317.00†	90.369	0.511	7376.46	8080.11	8077.43	336.80	40°08'40.588"N	104°52'04.880"W	0.00	
13417.00†	90.369	0.511	7375.82	8180.11	8177.42	337.69	40°08'41.576"N	104°52'04.869"W	0.00	
13517.00†	90.369	0.511	7375.17	8280.11	8277.42	338.58	40°08'42.564"N	104°52'04.857"W	0.00	
13544.06	90.369	0.511	7375.00 <sup>1</sup>	8307.17	8304.47	338.82	40°08'42.832"N	104°52'04.854"W	0.00	TOTAL DEPTH

HOLE & CASING SECTIONS - Ref Wellbore: TAIPAN 1N-15HZ PWB Ref Wellpath: TAIPAN 1N-15HZ (PERMIT REV-1) PWP									
String/Diameter	Start MD [ft]	End MD [ft]	Interval [ft]	Start TVD [ft]	End TVD [ft]	Start N/S [ft]	Start E/W [ft]	End N/S [ft]	End E/W [ft]
13.5in Open Hole	17.00	1206.00	1189.00	17.00	1206.00	0.00	0.00	0.00	0.00
9.625in Casing Surface	17.00	1206.00	1189.00	17.00	1206.00	0.00	0.00	0.00	0.00
8.75in Open Hole	1206.00	8416.22	7210.22	1206.00	7408.00	0.00	0.00	3176.95	293.13
7in Casing Intermediate	17.00	8416.22	8399.22	17.00	7408.00	0.00	0.00	3176.95	293.13
6.125in Open Hole	8416.22	13544.06	5127.84	7408.00	NA	3176.95	293.13	NA	NA
4.5in Casing Intermediate	17.00	13544.06	13527.06	17.00	NA	0.00	0.00	NA	NA

REFERENCE WELLPATH IDENTIFICATION			
Operator	KERR-MCGEE OIL & GAS ONSHORE LP	Slot	SLOT#41 TAIPAN 1N-15HZ (2192'FSL & 500'FEL, SEC.22)
Area	COLORADO	Well	TAIPAN 1N-15HZ
Field	WELD COUNTY (KERR MCGEE)	Wellbore	TAIPAN 1N-15HZ PWB
Facility	SEC.22-T2N-R67W		

TARGETS									
Name	MD [ft]	TVD [ft]	North [ft]	East [ft]	Grid East [US ft]	Grid North [US ft]	Latitude	Longitude	Shape
SEC.15-T2N-67W SECTION LINES		0.00	13006.20	-2710.22	3173592.05	1301060.42	40°09'29.293"N	104°52'44.123"W	polygon
SEC.22-T2N-R67W SECTION LINES		0.00	2466.17	-3846.69	3172530.63	1290513.02	40°07'45.134"N	104°52'58.739"W	polygon
1) TAIPAN 1N-15HZ BHL ON PLAT (50'FNL & 215'FEL, SEC.15) REV-1	13544.06	7375.00	8304.47	338.82	3176674.32	1296380.70	40°08'42.832"N	104°52'04.854"W	point

SURVEY PROGRAM - Ref Wellbore: TAIPAN 1N-15HZ PWB Ref Wellpath: TAIPAN 1N-15HZ (PERMIT REV-1) PWP				
Start MD [ft]	End MD [ft]	Positional Uncertainty Model	Log Name/Comment	Wellbore
17.00	13544.06	NaviTrak (IFR)		TAIPAN 1N-15HZ PWB



REFERENCE WELLPATH IDENTIFICATION			
Operator	KERR-MCGEE OIL & GAS ONSHORE LP	Slot	SLOT#41 TAIPAN 1N-15HZ (2192'FSL & 500'FEL, SEC.22)
Area	COLORADO	Well	TAIPAN 1N-15HZ
Field	WELD COUNTY (KERR MCGEE)	Wellbore	TAIPAN 1N-15HZ PWB
Facility	SEC.22-T2N-R67W		

WELLPATH COMMENTS					
MD [ft]	Inclination [°]	Azimuth [°]	TVD [ft]	Comment	
687.00	0.000	6.400	687.00	Base Fox Hills	
1206.00	0.000	6.400	1206.00	Parkman	
4793.10	26.000	6.400	4528.00	Sussex	
7918.65	56.459	1.764	7258.00	SSPG	
8074.07	65.763	1.055	7333.00	NBRR	
8241.90	76.423	0.511	7388.00	N470_B_CK	

DESIGN COMMENTS					
MD [ft]	Inclination [°]	Azimuth [°]	TVD [ft]	Comment	
17.00	0.000	6.400	17.00	TIE-ON	
1310.00	0.000	6.400	1310.00	BEGIN NUDGE	
2610.00	26.000	6.400	2565.84	END NUGE	
7408.76	26.000	6.400	6878.94	BUILD @ 6/100	
8211.61	74.000	0.511	7380.27	BUILD @ 8/100	
8416.22	90.369	0.511	7408.00	LANDING POINT	
13544.06	90.369	0.511	7375.00	TOTAL DEPTH	