



RECEIVED 09/23/2014
LOCATION 335800
API 045-10604
DOC 2141759

12065 Lebanon Rd.
Mt. Juliet, TN 37122
(615) 758-5858
1-800-767-5859
Fax (615) 758-5859

Tax I.D. 62-0814289

Est. 1970

Chris Hines / Matt Kasten
EnCana Oil & Gas Inc. - CO
2717 County Road 215, Suite 100
Parachute, CO 81635

Report Summary

Wednesday December 19, 2012

Report Number: L611323


Samples Received: 12/14/12

Client Project: A15

Description: A15 Site Clearance

The analytical results in this report are based upon information supplied by you, the client, and are for your exclusive use. If you have any questions regarding this data package, please do not hesitate to call.

Entire Report Reviewed By:


Jarred Willis , ESC Representative

Laboratory Certification Numbers

A2LA - 1461-01, AIHA - 100789, AL - 40660, CA - 01157CA, CT - PH-0197,
FL - E87487, GA - 923, IN - C-IN-01, KY - 90010, KYUST - 0016,
NC - ENV375/DW21704/BIO041, ND - R-140, NJ - TN002, NJ NELAP - TN002,
SC - 84004, TN - 2006, VA - 460132, WV - 233, AZ - 0612,
MN - 047-999-395, NY - 11742, WI - 998093910, NV - TN000032011-1,
TX - T104704245-11-3, OK - 9915, PA - 68-02979, IA Lab #364

Accreditation is only applicable to the test methods specified on each scope of accreditation held by ESC Lab Sciences.

Note: The use of the preparatory EPA Method 3511 is not approved or endorsed by the CA ELAP.

This report may not be reproduced, except in full, without written approval from ESC Lab Sciences. Where applicable, sampling conducted by ESC is performed per guidance provided in laboratory standard operating procedures: 060302, 060303, and 060304.

RECEIVED 09/23/2014

LOCATION 335800

API 045-10604

DOC 2141759



12065 Lebanon Rd.
Mt. Juliet, TN 37122
(615) 758-5858
1-800-767-5859
Fax (615) 758-5859

Tax I.D. 62-0814289

Est. 1970

REPORT OF ANALYSIS

Chris Hines / Matt Kasten
EnCana Oil & Gas Inc. - CO
2717 County Road 215, Suite 100
Parachute, CO 81635

December 19, 2012

Date Received : December 14, 2012
Description : A15 Site Clearance
Sample ID : A15-CS-S-121312
Collected By : Matt Kasten
Collection Date : 12/13/12 13:30

ESC Sample # : L611323-01

Site ID : A15

Project # : A15

| Parameter | Result | Det. Limit | Units | Method | Date | Dil. |
|-----------------------------|--------|------------|--------|-----------|----------|------|
| Benzene | BDL | 0.0025 | mg/kg | 8021/8015 | 12/17/12 | 5 |
| Toluene | BDL | 0.025 | mg/kg | 8021/8015 | 12/17/12 | 5 |
| Ethylbenzene | BDL | 0.0025 | mg/kg | 8021/8015 | 12/17/12 | 5 |
| Total Xylene | BDL | 0.0075 | mg/kg | 8021/8015 | 12/17/12 | 5 |
| TPH (GC/FID) Low Fraction | BDL | 0.50 | mg/kg | GRO | 12/17/12 | 5 |
| Surrogate Recovery-% | | | | | | |
| a,a,a-Trifluorotoluene(FID) | 96.0 | | % Rec. | 8021/8015 | 12/17/12 | 5 |
| a,a,a-Trifluorotoluene(PID) | 104. | | % Rec. | 8021/8015 | 12/17/12 | 5 |
| TPH (GC/FID) High Fraction | 8.1 | 4.0 | mg/kg | 3546/DRO | 12/19/12 | 1 |
| Surrogate recovery(%) | | | | | | |
| o-Terphenyl | 68.4 | | % Rec. | 3546/DRO | 12/19/12 | 1 |

BDL - Below Detection Limit

Det. Limit - Practical Quantitation Limit(PQL)

Note:

The reported analytical results relate only to the sample submitted.

This report shall not be reproduced, except in full, without the written approval from ESC.

Reported: 12/19/12 09:54 Printed: 12/19/12 09:54

RECEIVED 09/23/2014

LOCATION 335800

API 045-10604

DOC 2141759



YOUR LAB OF CHOICE

12065 Lebanon Rd.
Mt. Juliet, TN 37122
(615) 758-5858
1-800-767-5859
Fax (615) 758-5859

Tax I.D. 62-0814289

Est. 1970

REPORT OF ANALYSIS

Chris Hines / Matt Kasten
EnCana Oil & Gas Inc. - CO
2717 County Road 215, Suite 100
Parachute, CO 81635

December 19, 2012

Date Received : December 14, 2012
Description : A15 Site Clearance
Sample ID : A15-CS-N-121312
Collected By : Matt Kasten
Collection Date : 12/13/12 14:10

ESC Sample # : L611323-02

Site ID : A15

Project # : A15

| Parameter | Result | Det. Limit | Units | Method | Date | Dil. |
|-----------------------------|--------|------------|--------|-----------|----------|------|
| Benzene | BDL | 0.0025 | mg/kg | 8021/8015 | 12/17/12 | 5 |
| Toluene | BDL | 0.025 | mg/kg | 8021/8015 | 12/17/12 | 5 |
| Ethylbenzene | BDL | 0.0025 | mg/kg | 8021/8015 | 12/17/12 | 5 |
| Total Xylene | BDL | 0.0075 | mg/kg | 8021/8015 | 12/17/12 | 5 |
| TPH (GC/FID) Low Fraction | BDL | 0.50 | mg/kg | GRO | 12/17/12 | 5 |
| Surrogate Recovery-% | | | | | | |
| a,a,a-Trifluorotoluene(FID) | 96.2 | | % Rec. | 8021/8015 | 12/17/12 | 5 |
| a,a,a-Trifluorotoluene(PID) | 105. | | % Rec. | 8021/8015 | 12/17/12 | 5 |
| TPH (GC/FID) High Fraction | 70. | 4.0 | mg/kg | 3546/DRO | 12/19/12 | 1 |
| Surrogate recovery(%) | | | | | | |
| o-Terphenyl | 56.2 | | % Rec. | 3546/DRO | 12/19/12 | 1 |

BDL - Below Detection Limit

Det. Limit - Practical Quantitation Limit(PQL)

Note:

The reported analytical results relate only to the sample submitted.

This report shall not be reproduced, except in full, without the written approval from ESC.

.

Reported: 12/19/12 09:54 Printed: 12/19/12 09:54

RECEIVED 09/23/2014

LOCATION 335800

API 045-10604

DOC 2141759



12065 Lebanon Rd.
Mt. Juliet, TN 37122
(615) 758-5858
1-800-767-5859
Fax (615) 758-5859

Tax I.D. 62-0814289

Est. 1970

REPORT OF ANALYSIS

Chris Hines / Matt Kasten
EnCana Oil & Gas Inc. - CO
2717 County Road 215, Suite 100
Parachute, CO 81635

December 19, 2012

Date Received : December 14, 2012
Description : A15 Site Clearance
Sample ID : A15-CS-W-121312
Collected By : Matt Kasten
Collection Date : 12/13/12 14:30

ESC Sample # : L611323-03

Site ID : A15

Project # : A15

| Parameter | Result | Det. Limit | Units | Method | Date | Dil. |
|-----------------------------|--------|------------|--------|-----------|----------|------|
| Benzene | BDL | 0.0025 | mg/kg | 8021/8015 | 12/17/12 | 5 |
| Toluene | BDL | 0.025 | mg/kg | 8021/8015 | 12/17/12 | 5 |
| Ethylbenzene | BDL | 0.0025 | mg/kg | 8021/8015 | 12/17/12 | 5 |
| Total Xylene | BDL | 0.0075 | mg/kg | 8021/8015 | 12/17/12 | 5 |
| TPH (GC/FID) Low Fraction | BDL | 0.50 | mg/kg | GRO | 12/17/12 | 5 |
| Surrogate Recovery-% | | | | | | |
| a,a,a-Trifluorotoluene(FID) | 96.1 | | % Rec. | 8021/8015 | 12/17/12 | 5 |
| a,a,a-Trifluorotoluene(PID) | 105. | | % Rec. | 8021/8015 | 12/17/12 | 5 |
| TPH (GC/FID) High Fraction | 22. | 4.0 | mg/kg | 3546/DRO | 12/17/12 | 1 |
| Surrogate recovery(%) | | | | | | |
| o-Terphenyl | 54.1 | | % Rec. | 3546/DRO | 12/17/12 | 1 |

BDL - Below Detection Limit

Det. Limit - Practical Quantitation Limit(PQL)

Note:

The reported analytical results relate only to the sample submitted.

This report shall not be reproduced, except in full, without the written approval from ESC.

.

Reported: 12/19/12 09:54 Printed: 12/19/12 09:54

RECEIVED 09/23/2014

LOCATION 335800

API 045-10604

DOC 2141759

Summary of Remarks For Samples Printed
12/19/12 at 09:54:58

TSR Signing Reports: 358

R5 - Desired TAT

Try not to report benzene as BDL above a 250x dilution. ONLY log soil samples under this account. Waters get logged under ENCRCO. Log all PAHs as PAHSIM.

Sample: L611323-01 Account: ENCANACO Received: 12/14/12 09:30 Due Date: 12/21/12 00:00 RPT Date: 12/19/12 09:54

Sample: L611323-02 Account: ENCANACO Received: 12/14/12 09:30 Due Date: 12/21/12 00:00 RPT Date: 12/19/12 09:54

Sample: L611323-03 Account: ENCANACO Received: 12/14/12 09:30 Due Date: 12/21/12 00:00 RPT Date: 12/19/12 09:54



YOUR LAB OF CHOICE

EnCana Oil & Gas Inc. - CO
Chris Hines / Matt Kasten
2717 County Road 215, Suite 100

Parachute, CO 81635

Quality Assurance Report
Level II

L611323

12065 Lebanon Rd.
Mt. Juliet, TN 37122
(615) 758-5858
1-800-767-5859
Fax (615) 758-5859

Tax I.D. 62-0814289

Est. 1970

December 19, 2012

| Analyte | Result | Laboratory Blank | | Limit | Batch | Date Analyzed |
|-----------------------------|---------|------------------|-------|--------|----------|----------------|
| | | Units | % Rec | | | |
| Benzene | < .0005 | mg/kg | | | WG628412 | 12/17/12 02:57 |
| Ethylbenzene | < .0005 | mg/kg | | | WG628412 | 12/17/12 02:57 |
| Toluene | < .005 | mg/kg | | | WG628412 | 12/17/12 02:57 |
| TPH (GC/FID) Low Fraction | < .1 | mg/kg | | | WG628412 | 12/17/12 02:57 |
| Total Xylene | < .0015 | mg/kg | | | WG628412 | 12/17/12 02:57 |
| a,a,a-Trifluorotoluene(FID) | | % Rec. | 97.26 | 59-128 | WG628412 | 12/17/12 02:57 |
| a,a,a-Trifluorotoluene(PID) | | % Rec. | 106.0 | 54-144 | WG628412 | 12/17/12 02:57 |
| TPH (GC/FID) High Fraction | < 4 | mg/kg | | | WG628357 | 12/17/12 10:49 |
| o-Terphenyl | | % Rec. | 68.60 | 50-150 | WG628357 | 12/17/12 10:49 |
| TPH (GC/FID) High Fraction | < 4 | mg/kg | | | WG628736 | 12/18/12 21:33 |
| o-Terphenyl | | % Rec. | 92.50 | 50-150 | WG628736 | 12/18/12 21:33 |

| Analyte | Units | Laboratory Control Sample | | % Rec | Limit | Batch |
|-----------------------------|-------|---------------------------|--------|-------|--------|----------|
| | | Known Val | Result | | | |
| Benzene | mg/kg | .05 | 0.0541 | 108. | 76-113 | WG628412 |
| Ethylbenzene | mg/kg | .05 | 0.0569 | 114. | 78-115 | WG628412 |
| Toluene | mg/kg | .05 | 0.0530 | 106. | 76-114 | WG628412 |
| Total Xylene | mg/kg | .15 | 0.169 | 113. | 81-118 | WG628412 |
| a,a,a-Trifluorotoluene(PID) | | | | 104.4 | 54-144 | WG628412 |
| TPH (GC/FID) Low Fraction | mg/kg | 5.5 | 6.01 | 109. | 67-135 | WG628412 |
| a,a,a-Trifluorotoluene(FID) | | | | 103.8 | 59-128 | WG628412 |
| TPH (GC/FID) High Fraction | mg/kg | 60 | 43.7 | 72.8 | 50-150 | WG628357 |
| o-Terphenyl | | | | 72.30 | 50-150 | WG628357 |
| TPH (GC/FID) High Fraction | mg/kg | 60 | 57.8 | 96.3 | 50-150 | WG628736 |
| o-Terphenyl | | | | 96.20 | 50-150 | WG628736 |

| Analyte | Units | Laboratory Control Sample Duplicate | | | Limit | RPD | Limit | Batch |
|-----------------------------|-------|-------------------------------------|--------|-------|--------|-------|-------|----------|
| | | Result | Ref | %Rec | | | | |
| Benzene | mg/kg | 0.0548 | 0.0541 | 110. | 76-113 | 1.27 | 20 | WG628412 |
| Ethylbenzene | mg/kg | 0.0575 | 0.0569 | 115. | 78-115 | 0.980 | 20 | WG628412 |
| Toluene | mg/kg | 0.0535 | 0.0530 | 107. | 76-114 | 0.930 | 20 | WG628412 |
| Total Xylene | mg/kg | 0.170 | 0.169 | 114. | 81-118 | 0.620 | 20 | WG628412 |
| a,a,a-Trifluorotoluene(PID) | | | | 104.9 | 54-144 | | | WG628412 |
| TPH (GC/FID) Low Fraction | mg/kg | 6.00 | 6.01 | 109. | 67-135 | 0.170 | 20 | WG628412 |
| a,a,a-Trifluorotoluene(FID) | | | | 104.0 | 59-128 | | | WG628412 |
| TPH (GC/FID) High Fraction | mg/kg | 42.0 | 43.7 | 70.0 | 50-150 | 3.88 | 20 | WG628357 |
| o-Terphenyl | | | | 68.00 | 50-150 | | | WG628357 |
| TPH (GC/FID) High Fraction | mg/kg | 56.5 | 57.8 | 94.0 | 50-150 | 2.30 | 20 | WG628736 |
| o-Terphenyl | | | | 90.80 | 50-150 | | | WG628736 |

| Analyte | Units | Matrix Spike | | | % Rec | Limit | Ref Samp | Batch |
|--------------|-------|--------------|---------|-----|-------|--------|------------|----------|
| | | MS Res | Ref Res | TV | | | | |
| Benzene | mg/kg | 0.230 | 0 | .05 | 92.1 | 32-137 | L611319-01 | WG628412 |
| Ethylbenzene | mg/kg | 0.212 | 0 | .05 | 84.9 | 10-150 | L611319-01 | WG628412 |

* Performance of this Analyte is outside of established criteria.

For additional information, please see Attachment A 'List of Analytes with QC Qualifiers.'

RECEIVED 09/23/2014

LOCATION 335800

API 045-10604

DOC 2141759



YOUR LAB OF CHOICE

EnCana Oil & Gas Inc. - CO
Chris Hines / Matt Kasten
2717 County Road 215, Suite 100

Parachute, CO 81635

Quality Assurance Report
Level II

L611323

12065 Lebanon Rd.
Mt. Juliet, TN 37122
(615) 758-5858
1-800-767-5859
Fax (615) 758-5859

Tax I.D. 62-0814289

Est. 1970

December 19, 2012

| Analyte | Units | MS Res | Matrix Spike | | TV | % Rec | Limit | Ref Samp | Batch |
|-----------------------------|-------|--------|--------------|-----|----|-------|--------|------------|----------|
| | | | Ref Res | TV | | | | | |
| Toluene | mg/kg | 0.253 | 0.00120 | .05 | | 101. | 20-142 | L611319-01 | WG628412 |
| Total Xylene | mg/kg | 0.632 | 0.00270 | .15 | | 83.9 | 16-141 | L611319-01 | WG628412 |
| a,a,a-Trifluorotoluene(PID) | | | | | | 103.2 | 54-144 | | WG628412 |
| TPH (GC/FID) Low Fraction | mg/kg | 20.7 | 0 | 5.5 | | 75.1 | 55-109 | L611319-01 | WG628412 |
| a,a,a-Trifluorotoluene(FID) | | | | | | 98.44 | 59-128 | | WG628412 |
| TPH (GC/FID) High Fraction | mg/kg | 54.2 | 0 | 60 | | 90.3 | 50-150 | L611586-07 | WG628736 |
| o-Terphenyl | | | | | | 89.10 | 50-150 | | WG628736 |

| Analyte | Units | MSD | Matrix Spike Duplicate | | Limit | RPD | Limit | Ref Samp | Batch |
|-----------------------------|-------|-------|------------------------|-------|--------|-------|-------|------------|----------|
| | | | Ref | %Rec | | | | | |
| Benzene | mg/kg | 0.238 | 0.230 | 95.2 | 32-137 | 3.32 | 39 | L611319-01 | WG628412 |
| Ethylbenzene | mg/kg | 0.215 | 0.212 | 86.1 | 10-150 | 1.32 | 44 | L611319-01 | WG628412 |
| Toluene | mg/kg | 0.221 | 0.253 | 88.0 | 20-142 | 13.6 | 42 | L611319-01 | WG628412 |
| Total Xylene | mg/kg | 0.636 | 0.632 | 84.4 | 16-141 | 0.550 | 46 | L611319-01 | WG628412 |
| a,a,a-Trifluorotoluene(PID) | | | | 104.0 | 54-144 | | | | WG628412 |
| TPH (GC/FID) Low Fraction | mg/kg | 19.5 | 20.7 | 70.9 | 55-109 | 5.80 | 20 | L611319-01 | WG628412 |
| a,a,a-Trifluorotoluene(FID) | | | | 99.84 | 59-128 | | | | WG628412 |
| TPH (GC/FID) High Fraction | mg/kg | 59.1 | 54.2 | 98.4 | 50-150 | 8.60 | 20 | L611586-07 | WG628736 |
| o-Terphenyl | | | | 100.0 | 50-150 | | | | WG628736 |

Batch number /Run number / Sample number cross reference

WG628412: R2480658: L611323-01 02 03
WG628357: R2482179: L611323-03
WG628736: R2484060: L611323-01 02

* * Calculations are performed prior to rounding of reported values.
* Performance of this Analyte is outside of established criteria.
For additional information, please see Attachment A 'List of Analytes with QC Qualifiers.'

RECEIVED 09/23/2014

LOCATION 335800

API 045-10604

DOC 2141759



YOUR LAB OF CHOICE

EnCana Oil & Gas Inc. - CO
Chris Hines / Matt Kasten
2717 County Road 215, Suite 100

Parachute, CO 81635

Quality Assurance Report
Level II

L611323

12065 Lebanon Rd.
Mt. Juliet, TN 37122
(615) 758-5858
1-800-767-5859
Fax (615) 758-5859

Tax I.D. 62-0814289

Est. 1970

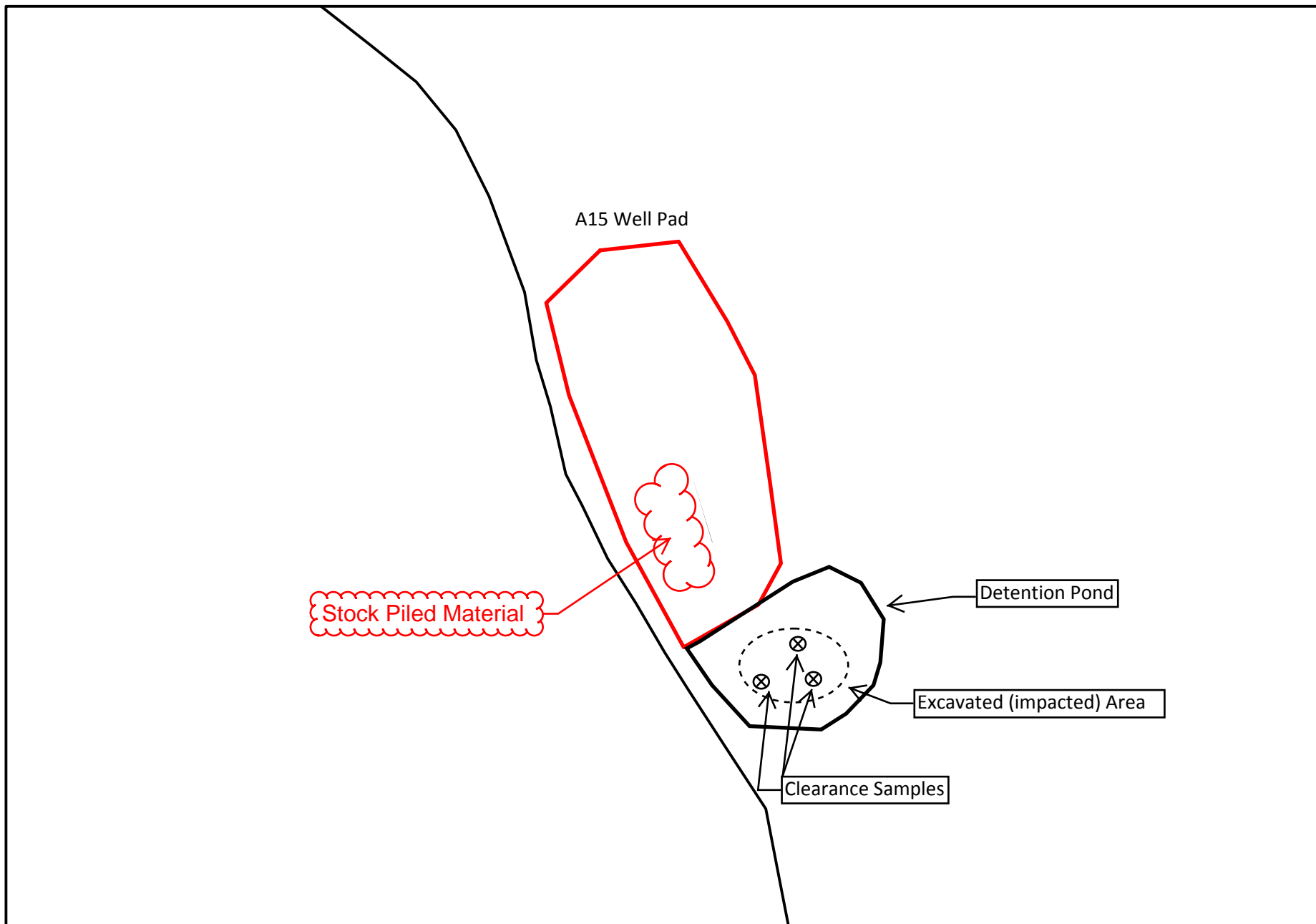
December 19, 2012

The data package includes a summary of the analytic results of the quality control samples required by the SW-846 or CWA methods. The quality control samples include a method blank, a laboratory control sample, and the matrix spike/matrix spike duplicate analysis. If a target parameter is outside the method limits, every sample that is effected is flagged with the appropriate qualifier in Appendix B of the analytic report.

Method Blank - an aliquot of reagent water carried through the entire analytic process. The method blank results indicate if any possible contamination exposure during the sample handling, digestion or extraction process, and analysis. Concentrations of target analytes above the reporting limit in the method blank are qualified with the "B" qualifier.

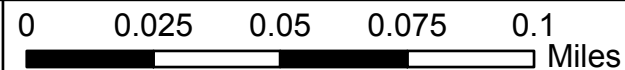
Laboratory Control Sample - is a sample of known concentration that is carried through the digestion/extraction and analysis process. The percent recovery, expressed as a percentage of the theoretical concentration, has statistical control limits indicating that the analytic process is "in control". If a target analyte is outside the control limits for the laboratory control sample or any other control sample, the parameter is flagged with a "J4" qualifier for all effected samples.

Matrix Spike and Matrix Spike Duplicate - is two aliquots of an environmental sample that is spiked with known concentrations of target analytes. The percent recovery of the target analytes also has statistical control limits. If any recoveries that are outside the method control limits, the sample that was selected for matrix spike/matrix spike duplicate analysis is flagged with either a "J5" or a "J6". The relative percent difference (%RPD) between the matrix spike and the matrix spike duplicate recoveries is all calculated. If the RPD is above the method limit, the effected samples are flagged with a "J3" qualifier.



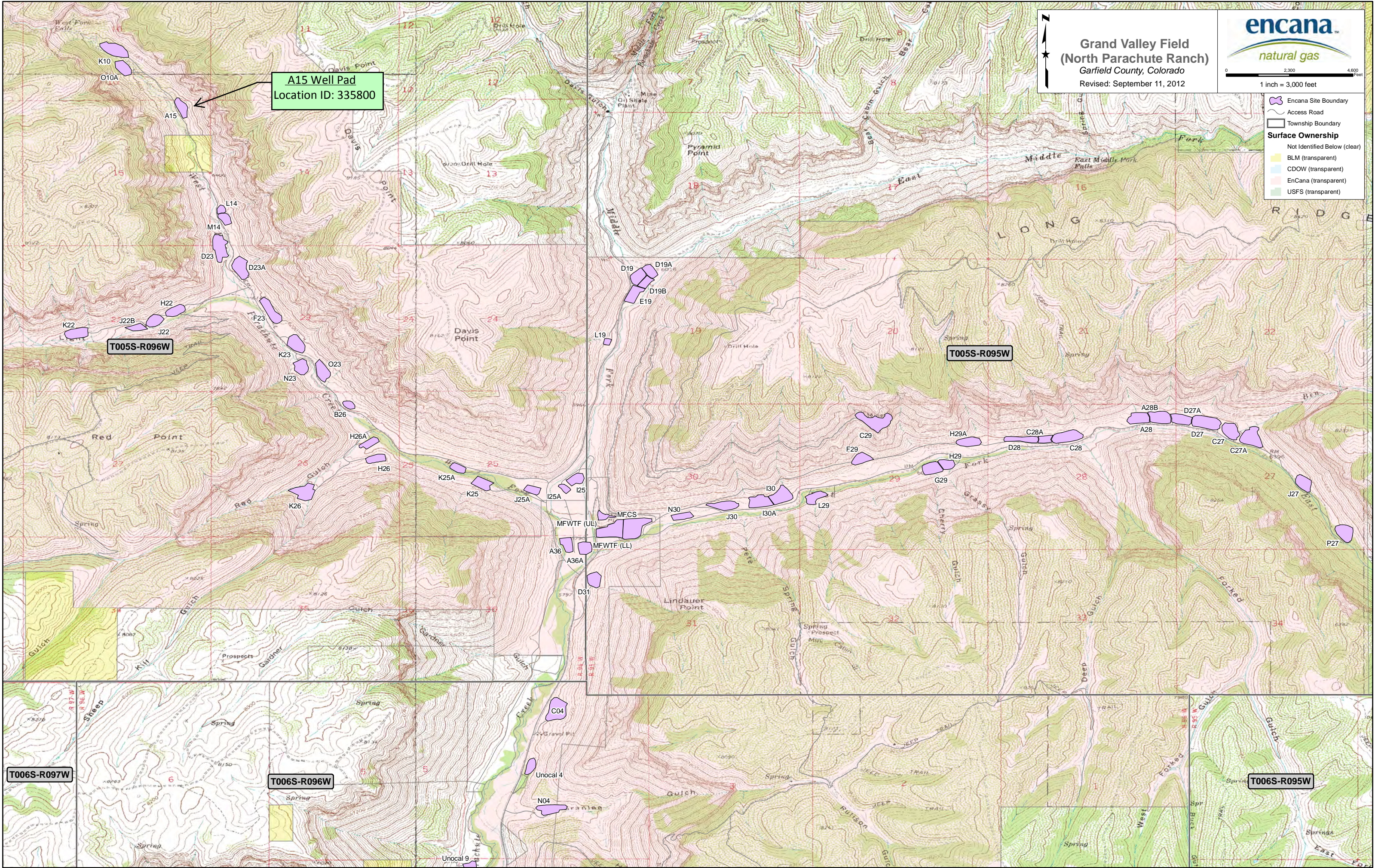
Encana Oil and Gas

A15 Well Pad
NENE, Section 15, T5S, R96W, 6th PM
Garfield County, Colorado




1 inch = 200 feet
February 15, 2012





**Grand Valley Field
(North Parachute Ranch)**
Garfield County, Colorado
Revised: September 11, 2012



encana
natural gas

0 2,300 4,600
Feet

1 inch = 3,000 feet

Encana Site Boundary

Access Road

Township Boundary

Surface Ownership

Not Identified Below (clear)

BLM (transparent)

CDOW (transparent)

EnCana (transparent)

USFS (transparent)