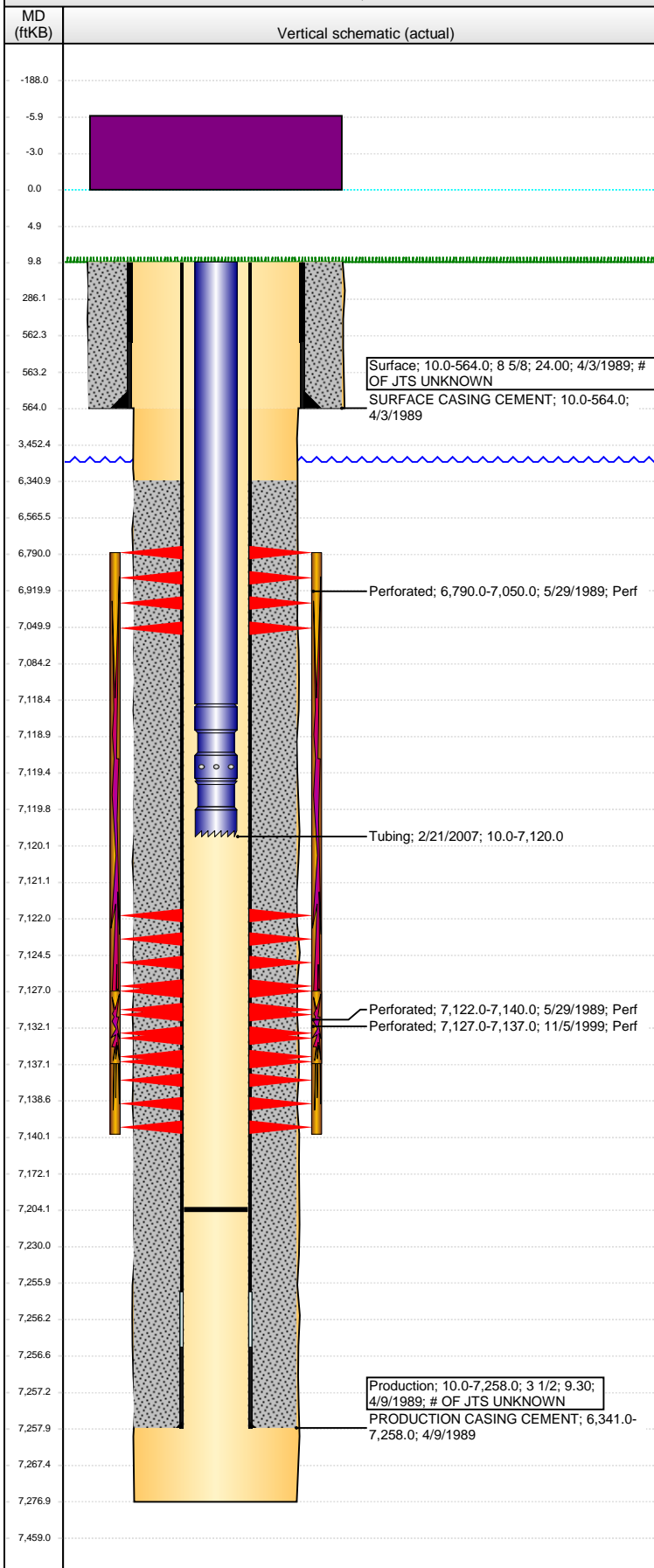


**Well Name: ROBERT C NICE 22-01**

VERTICAL - ORIGINAL HOLE, 9/25/2014 3:07:02 PM



## Well Header

API	Business Unit	District	Well Config
05-123-14257	DJ BASIN	15	VERTICAL
Original KB Elevation (ft)	KB - GL / MSL (ftKB)	Spud Date	P & A Date
4,819.00	10.00	4/3/1989	

## Comment

# OF SURFACE & PROD CSG JTS UNKNOWN  
MISSING ORIGINAL DRL RPTS; USED ST RPTS. FRAC DATE ESTIMATED

## Directions To Well

## Congressional Location

Quarter 1	Quarter 2	Quarter 3	Quarter 4	Section	Township	Twnshp N...	Range	Rng E/W Dir
	NW	NW	SW	22	3	N	65	W

## Bottom Hole Location

North-South Distance (ft)	From N or S Line	East-West Distance (ft)	From E or W Line

## Plug Back Total Depths

Date	Depth (ftKB)	Method	Com
4/11/1989	7,215.0	CASED HOLE LOG	DEPTH LOGGER ON CBL
11/4/1999	7,232.0	TAG	CLEAN OUT
2/20/2007	7,204.0	TAG	CLEAN OUT TO LAND TUBING

## Wellbore Sections

Section Des	Size (in)	Act Top, MD (ftKB)	Act Btm, MD (ftKB)
SURFACE	12 1/4	10.0	564.0
PRODUCTION	7 7/8	564.0	7,277.0

## Zone Statuses

Zone Name	Status Date	Status	Job
NIOBRARA	5/31/1989	PR	DRILLING/COMPLETION - ORIGINAL, 4/3/1989 00:00
NIOBRARA	11/15/1999	PR	RE-FRAC, 11/3/1999 00:00
NIOBRARA	11/15/2004	PR	TUBING REPAIR, 10/30/2004 00:00
NIOBRARA	2/23/2007	PR	CLEAN-OUT, 1/13/2007 00:00
CODELL	5/31/1989	PR	DRILLING/COMPLETION - ORIGINAL, 4/3/1989 00:00
CODELL	11/15/1999	PR	RE-FRAC, 11/3/1999 00:00
CODELL	11/15/2004	PR	TUBING REPAIR, 10/30/2004 00:00
CODELL	2/23/2007	PR	CLEAN-OUT, 1/13/2007 00:00

## Casing Strings

### Surface, 564.0ftKB

Casing Description	Run Date	OD (in)	Wt/Len (l...)	Grade	Top, MD (ft...)	MD (ftKB)
Surface	4/3/1989	8 5/8	24.00		10.0	564.0

### Production, 7,258.0ftKB

Casing Description	Run Date	OD (in)	Wt/Len (l...)	Grade	Top, MD (ft...)	MD (ftKB)
Production	4/9/1989	3 1/2	9.30		10.0	7,258.0

## Cement

Description	Top Depth (ftKB)	Bottom Depth (ftKB)
SURFACE CASING CEMENT	10.0	564.0
Description	Top Depth (ftKB)	Bottom Depth (ftKB)
PRODUCTION CASING CEMENT	6,341.0	7,258.0

## Tubing Components

Item Des	OD (in)	Wt (lb/ft)	Grade	Jts	Len (ft)	Btm (ftKB)	Btm (TVD) (ftKB)
Tubing	2 1/16		IJ	230	7,108.50	7,118.5	
Pump Seating Nipple	2 1/16				1.00	7,119.5	
Notched collar	2 1/16				0.50	7,120.0	

## Perforation Data

Zone	Bnch/St g	Entered Shot Total	Top (ftKB)	Btm (ftKB)	Date
NIOBRARA, ORIGINAL HOLE		8	6,790.00	7,050.00	5/29/1989
CODELL, ORIGINAL HOLE		4	7,122.00	7,140.00	5/29/1989
CODELL, ORIGINAL HOLE		40	7,127.00	7,137.00	11/5/1999

## Stimulations & Treatments

Date	Zone	Primary Job Type
5/30/1989	NIOBRARA-CODELL, ORIGINAL HOLE	DRILLING/COMPLETION - ORIGINAL
Technical Result	Tech Result Details	Tech Result Note

## Comment

LIMITED ENTRY FRAC. DATE ESTIMATED

**Well Name: ROBERT C NICE 22-01**

VERTICAL - ORIGINAL HOLE, 9/25/2014 3:07:04 PM

## Stimulations & Treatments

Date 11/11/1999	Zone CODELL, ORIGINAL HOLE	Primary Job Type RE-FRAC
Technical Result	Tech Result Details	Tech Result Note
Comment		

## Other In Hole

Run Date	Des	OD (in)	Top (ftKB)	Btm (ftKB)

## Logs

Date	Type	Top, MD (ftKB)	Btm, MD (ftKB)
4/8/1989	COMPENSATED DENSITY	4,300.0	7,274.0
4/11/1989	CEMENT BOND	6,240.0	7,206.0
11/4/1999	CEMENT BOND	5,992.0	7,242.0
2/11/2014	GYRO	10.0	7,000.0

